



VisiTrigger Quick Reference

This covers:

- Using Trigger Functions
- Editing Trigger Sequence Levels
- Storage Qualification
- Intermodule Triggering

Agilent Technologies
Printed in the USA

Manual Part Number
16715-92004, May 2000



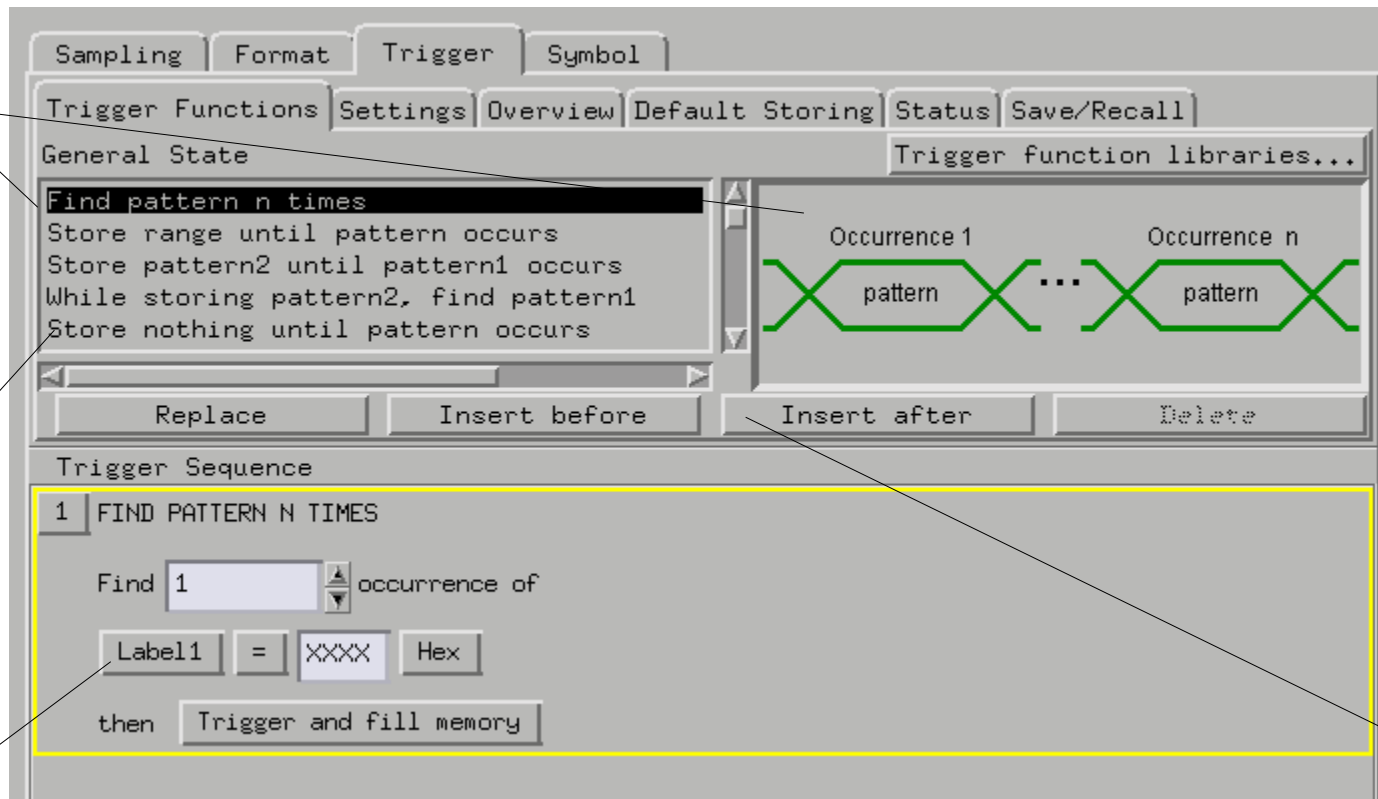
Using Trigger Functions

To see the matching graphic, single-click a function.

To replace the selected sequence level, double-click a function.

The advanced functions are at the bottom of the list. Use them for multi-way branching, timers and counters.

Click here and select "Replace label.." to change the label. Select "Insert label..." to create an AND.



These buttons use the currently selected function.

Editing Trigger Sequence Levels

General rule: Click on a button to get a list of options.

Click here and select "Insert Branch" to add another branch.

Click here to change the operator to equals, edge, range, >, etc.

Multiple actions are allowed in each branch. Click here and select "Insert action" to add another action.

To create an AND/OR, click here and select "Insert event". This replaces the Combo dialog.

The screenshot shows a 'Trigger Sequence' editor window. The main sequence is: 1 | If | ADDR | = | 1234 | Hex. Below this, it says 'occurs 1 time'. The 'then' branch contains: Timer | 1 | Start from reset, Flag | 1 | Set, and Goto | Next. Below the main sequence, there are options for 'Else if' with ADDR | In range | 0000 | 1325 | Hex | Or, and another 'then' branch with ADDR | >= | F345 | Hex | then Goto | 2.

Multiple branches, timers, counters and flags are only available in advanced functions.

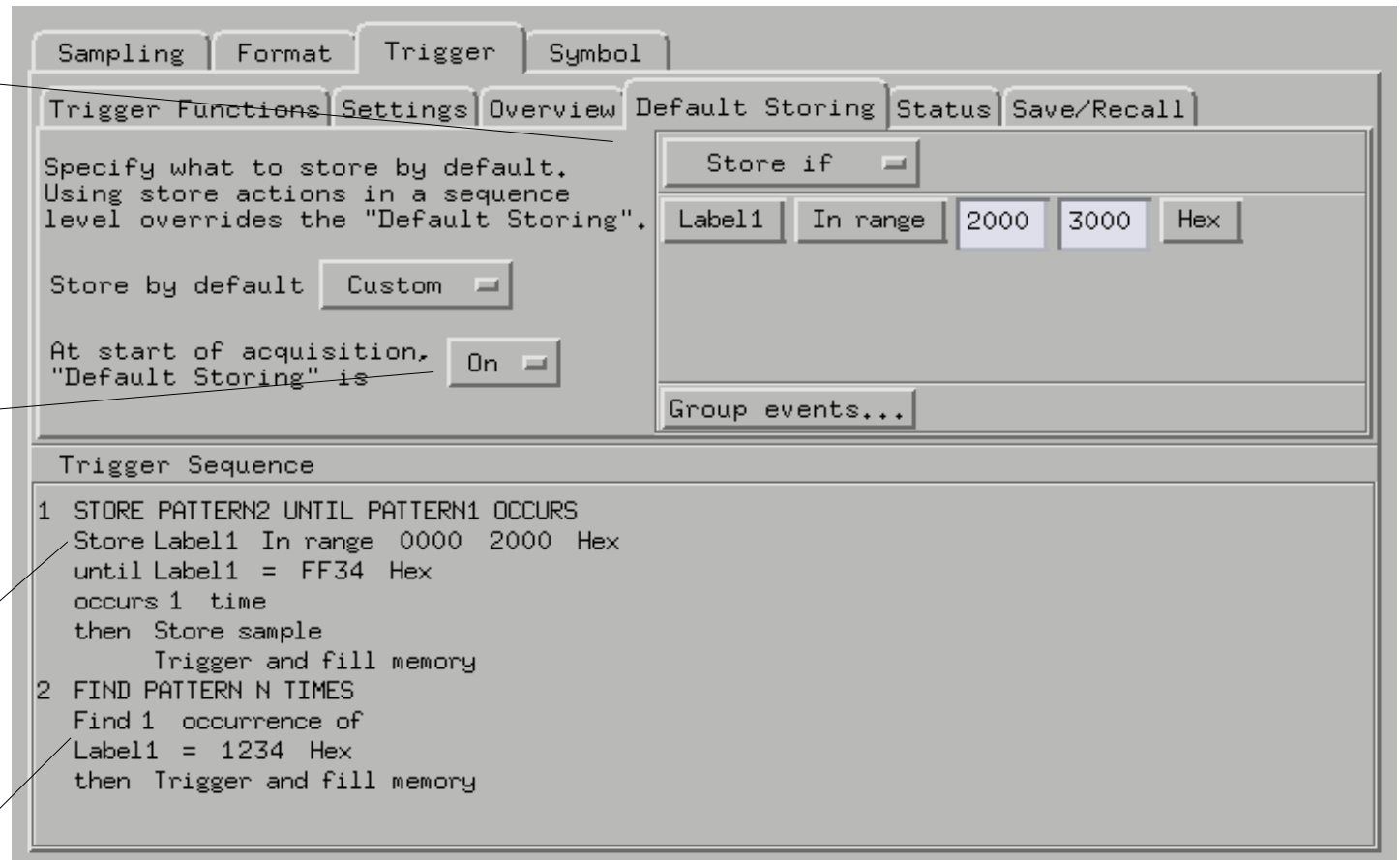
Storage Qualification

Default Storing means “unless a sequence level says otherwise, this is what to store”. This eliminates the need to specify storage for each sequence level.

There are actions to turn default storing On and Off.

This overrides the default storing. This function is the same as the “While Storing” macro in previous versions.

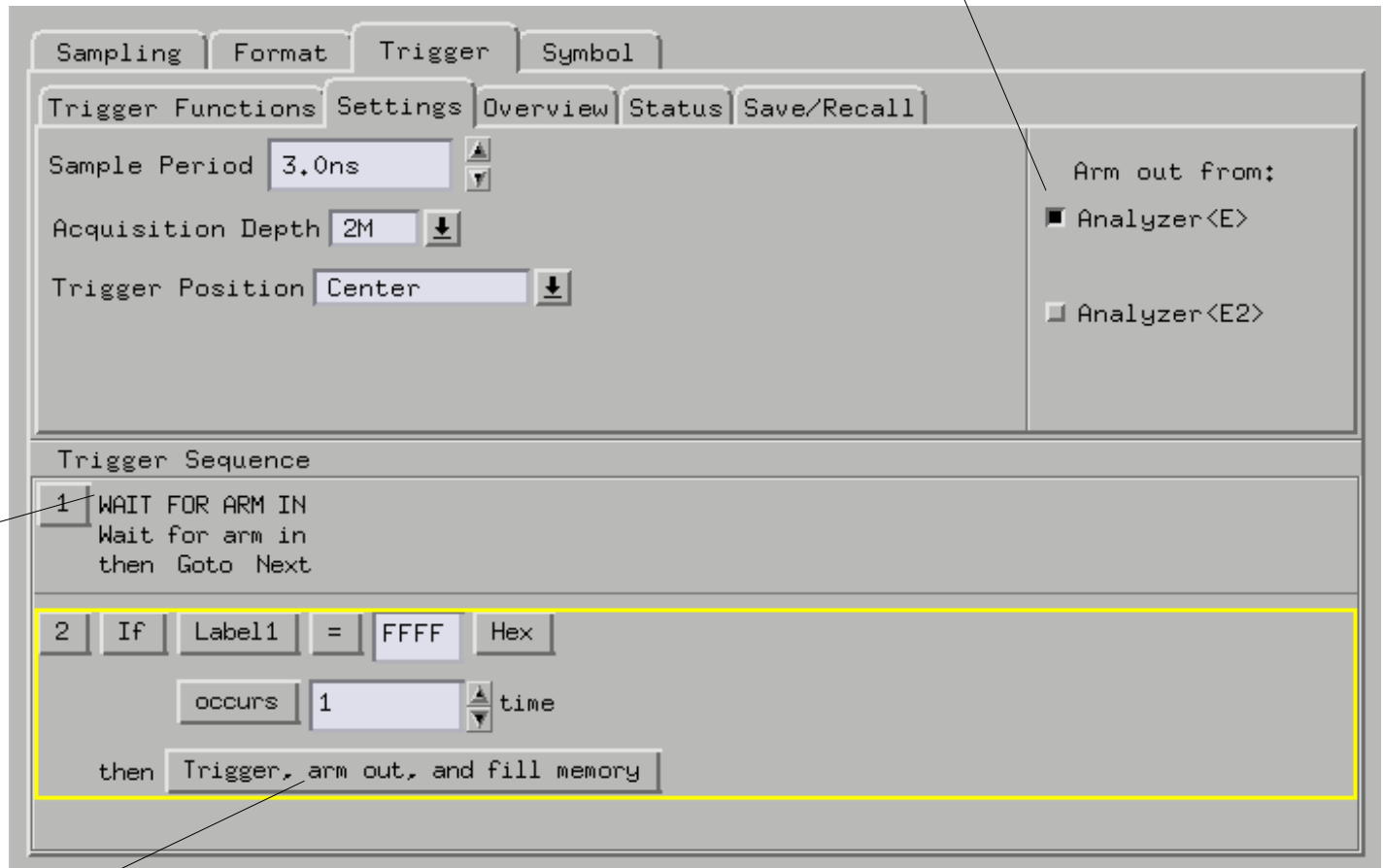
This sequence level doesn’t specify what is stored, so the Default Storing applies.



Intermodule Triggering

The Intermodule dialog still controls the arming order. It is easier if the arming order is set up before specifying the triggers for each module.

Specify which analyzer is to send the arm out signal. This only appears if both analyzers in a module are active.



There's a "Wait for Arm In" trigger function. Use it to specify which sequence level is to wait for the "arm in" signal.

Arm out signals are sent when this module triggers. This is set up in the Intermodule dialog.

Summary

- Trigger functions are the simplest way to set up a trigger.
- Click on a trigger function in the list; then, click on the “Replace”, “Insert Before”, or “Insert After” buttons. Double-clicking a function is a short cut for “Replace”.
- To create an “AND”, click on the label button and select “Insert”. This replaces the combo dialog.
- “While storing” becomes “Store pattern until pattern occurs”.
- Within each branch, multiple actions are allowed, one of which must be a Go To or Trigger action.
- Advanced functions are located at the bottom of the list. Use them for multiple branches, timers, flags, and global counters.
- The Arming Control dialog has been replaced by the trigger functions “Wait for Arm in” and “Wait for other analyzer to trigger”.