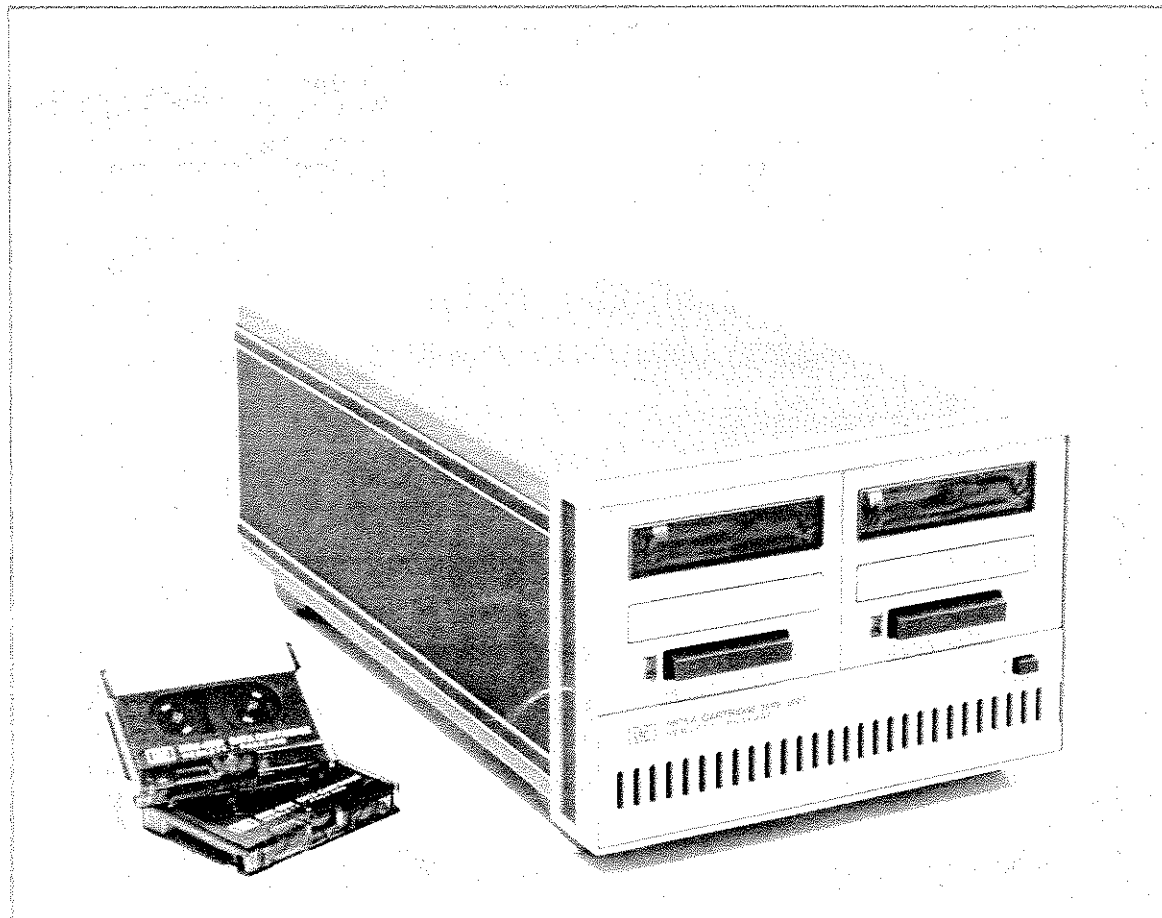


Hewlett-Packard 9875A Cartridge Tape Unit

Installation and Operating



HEWLETT  PACKARD

Warranty Statement

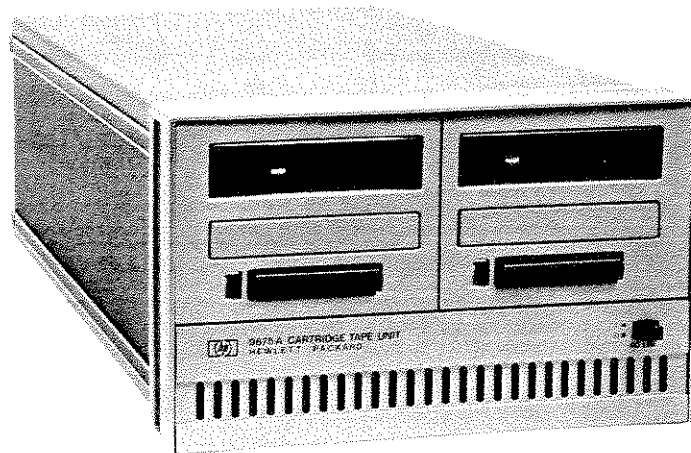
Hewlett-Packard products are warranted against defects in materials and workmanship. For Hewlett-Packard Calculator Products Divisions products sold in the U.S.A. and Canada, this warranty applies for ninety (90) days from date of delivery.* Hewlett-Packard will, at its option, repair or replace equipment which proves to be defective during the warranty period. This warranty includes labor, parts and surface travel costs, if any. Equipment returned to Hewlett-Packard for repair must be shipped freight prepaid. Repairs necessitated by misuse of the equipment, or by hardware, software, or interfacing not provided by Hewlett-Packard are not covered by this warranty.

NO OTHER WARRANTY IS EXPRESSED OR IMPLIED, INCLUDING, BUT NOT LIMITED TO, THE IMPLIED WARRANTIES OF MERCHANTABILITY AND FITNESS FOR A PARTICULAR PURPOSE. HEWLETT-PACKARD SHALL NOT BE LIABLE FOR CONSEQUENTIAL DAMAGES.

*For other countries, contact your local Sales and Service Office to determine warranty terms.

9875A Cartridge Tape Unit

Installation and Operating



HP System 45 Desktop Computer
9875A Cartridge Tape Unit

Hewlett-Packard Calculator Products Division
P.O. Box 301, Loveland, Colorado 80537
(For World-wide Sales and Service Offices see back of manual.)
Copyright by Hewlett-Packard Company 1978

Table of Contents

Chapter 1: General Information

Chapter 2: Installation

Cartridge Tape Unit Inspection Procedures	5
Equipment Supplied	5
Grounding Requirements	6
Power Requirements	6
Power Cords	6
Line Voltage	7
Fuses	8
Rack Mounting	8
Interface Connection	10
Cartridge Tape Unit Address Code	10
Power On Procedure	12
Tape Cartridge	13
Inserting and Removing the Cartridge	14
Cartridge Tape Unit Care	14
Magnetic Tape Head	14
Tape Cartridge	15
Conditioning the Tape	16
Respooling the Tape	16
Self Test	17
Self Test Procedure	17

Chapter 3: HP Interface Bus

HP-IB System Terms	21
Interface Bus Concepts	22
Message Concepts	23
Addressing	24

Chapter 4: Tape Format

Tracks	27
Files	27
Records	28
File Identifier Record	30
End of Valid Data Mark	30

Chapter 5: Syntax

The HP 9875A Command Set	31
Syntax Guidelines	33
Automatic Verify	34
End of Data List	34
Find End of Valid Data	37
Find File	37
Identify File	38
Identify Record	39
Input Mask	40
Mark File	41
Mark Record	43
Output Error	44
Output Status	45
Read File	46
Read File Identifier	47
Read Record	47
Rewind	48
Select Drive	48
Store File	49
Store File Identifier	49
Store Record	50
Self Test	50
Time Interval	51
Write File	51
Write Record	53

Chapter 6: Operation

Theory of Operation	55
Errors	56
Initialized Condition	57
Polling	57
Serial Poll	57
Parallel Poll	57
Normal Operation	58
Marking Files	58
Handling Errors	59

Storing Data	60
Premarked Files	60
Non-Premarked Files	61
Reading Data	62
Error Interrupt Routine	62
Input/Output of Data	63
Buffer Status Identifier	63
Self-Identify Mode	64
Primary Address	64
Device Identity Code	65
Device Specified Jump	66
Listen Only/Talk Only Mode	66
Listen Only	66
Talk Only	68
Programmable LO/TO	68
Tape Life	69

Appendices

A. Glossary	71
B. Bus Message Implementation	75
C. HP-IB Worksheet	85
D. Index	87
E. Sales and Service Offices	93
F. Status and Errors	95

Figures

1-1 Cartridge Tape Unit Front Panel	2
1-2 Cartridge Tape Unit Rear Panel	2
2-1 Power Cords	7
2-2 Nominal Line Voltage Settings	8
2-3 Rack Mounting Adaption	9
2-4 Connecting the Interface	10
2-5 Setting the Address Switches	12
2-6 Self Test Switch Off	12
2-7 Enabling Power to the CTU	13
2-8 Tape Cartridge Write Protection	13
2-9 Inserting the Tape Cartridge	14
2-10 Cleaning the Read/Write Head	15
2-11 Tape Cartridge	17
2-12 Self Test Switch On	18

3-1	Typical HP-IB System	22
4-1	File Geometry	27
4-2	Record Geometry	28
4-3	Header Geometry	29
4-4	End of Valid Data Mark (EVD)	30
5-1	File Size Interaction	42
6-1	Self-Identify Switch	65
6-2	Listen Only Address Switch Setting	66
6-3	Talk Only Address Switch Setting	68

Tables

1.	Equipment Supplied	5
2.	Rack Mounting Parts	9
3.	HP-IB Interfaces	10
4.	Available Bus Addresses and Codes	11
5.	Implemented Messages	24
6.	Parameter Output Format	31
7.	Command Syntax	32
8.	Initialized Conditions	33
9.	EOD Characters	35
10.	Continuous Output Specifier	36
11.	Available Conditions for SRQ and Affirmative Parallel Poll Response	40
12.	Output Error Parameters	44
13.	Programming Techniques Manuals	55
14.	Parallel Poll Response	57
15.	Buffer Status Identifier	64

9875A Cartridge Tape Unit Specifications

Read Speed and Write Speed:	559 mm/sec. (22 in./sec.)
Search Speed:	2286 mm/sec. (90 in./sec.)
Average Transfer Rate:	1500 bytes/sec.
(between controller and tape)	
Maximum Transfer Rate:	7000 bytes/sec.
(between controller and 9875A data buffer)	
End to End Search Time:	19 seconds
Number of Tracks:	2 (implemented as 1 logical track)

CARTRIDGE

Tape:	DC-100
Usable Tape Length:	42.67 metres (140 ft.)
Bit Density:	1600 Flux reversals/in.
Data Capacity:	225K bytes/cartridge (dependent on tape organization)
Coding:	Delta-distance

POWER REQUIREMENTS

Source:	100V +6% -13%	selected by rear panel switches
	120V +6% -13%	
	220V +6% -13%	
	240V +6% -13%	
Frequency:	48 Hz to 66 Hz	
Consumption:	100V/800 mA	
	120V/680 mA	
	220V/380 mA	
	240V/345 mA	

SIZE / WEIGHT

Height:	132.6 mm (5.22 in.)
Width:	212.3 mm (8.35 in.)
Depth:	345.4 mm (13.60 in.)
Net Weight:	6.5 Kg (14.3 lb.) 1 drive; 6.9 Kg (15.2 lb.) 2 drives
Shipping Weight:	10.5 Kg (23.1 lb.) 1 drives; 10.9 Kg (24 lb.) 2 drives

ENVIRONMENTAL RANGE

Temperature:	5°C to 40°C
Relative Humidity:	20% to 80% non-condensing

Chapter 1

General Information

This manual provides the installation and operating information for the HP 9875A Cartridge Tape Unit (CTU).

The cartridge tape unit is an HP Interface Bus (HP-IB)¹ compatible device, that can be used for data logging, data base storage and program storage with HP-IB compatible controllers.

The HP 9875A Cartridge Tape Unit provides data storage capability by writing data on and reading data from a magnetic tape (HP P/N 9162-0061). Option 001 provides the cartridge tape unit with a second tape transport system.

You should be thoroughly familiar with the appropriate Input/Output (I/O) procedures for your controller before using the HP 9875A Cartridge Tape Unit.

If you are not familiar with magnetic tape terminology, refer to the glossary in Appendix A.

¹ The HP-IB is Hewlett-Packard's implementation of IEEE standard 488-1975.

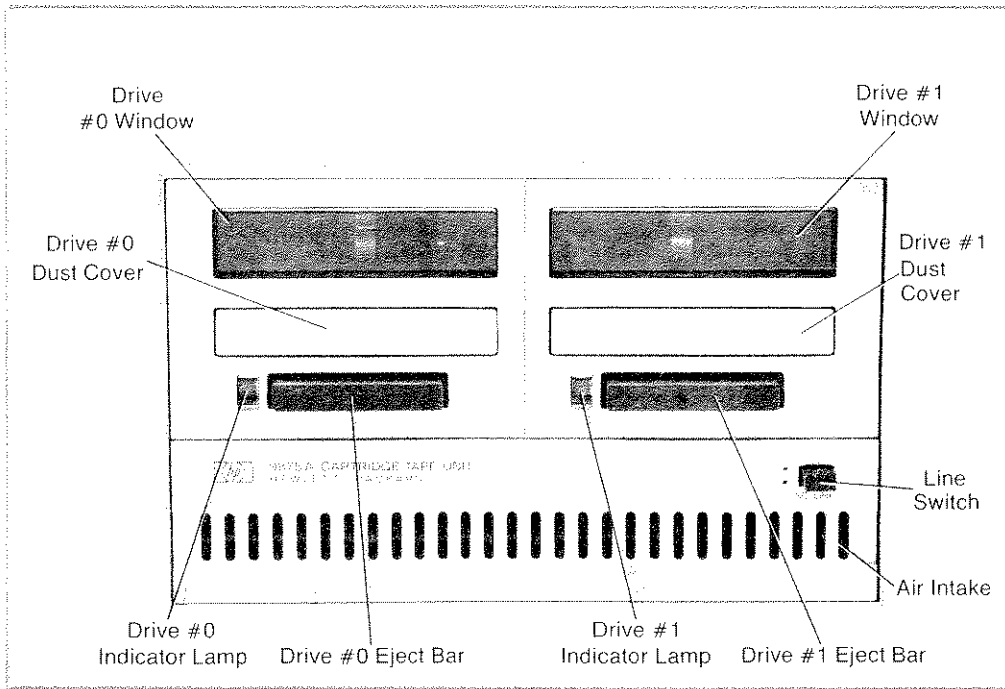


Figure 1-1: Cartridge Tape Unit Front Panel

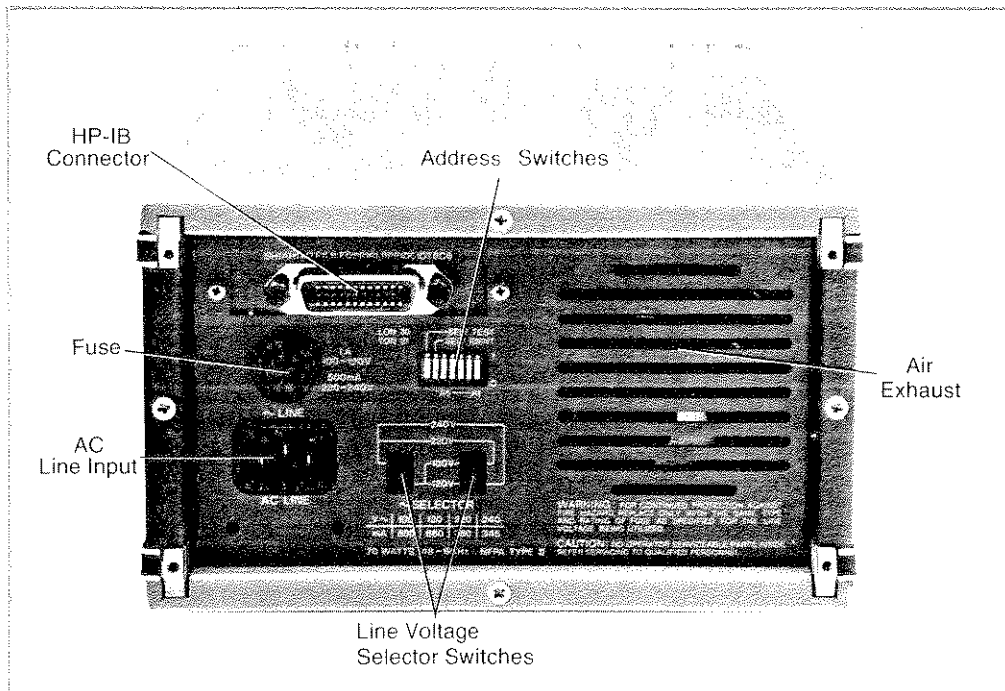


Figure 1-2: Cartridge Tape Unit Rear Panel

When you buy a Hewlett-Packard peripheral, service is an important factor. If you are to get maximum use from your machine, it must be in good working order. An HP Maintenance Agreement is the best way to keep your machine in optimum running condition.

Consider these important advantages –

- **Fixed Cost** – The cost is the same regardless of the number of calls, so it is a figure that you can budget.
- **Priority Service** – Your Maintenance Agreement assures that you receive priority treatment, within an agreed upon response time.
- **On-Site Service** – There is no need to package your equipment and return it to HP. Fast and efficient modular replacement at your location saves you both time and money.
- **A Complete Package** – A single charge covers labor, parts, and transportation.
- **Regular Maintenance** – Periodic visits are included, per factory recommendations, to keep your equipment in optimum operating condition.
- **Individualized Agreements** – Each Maintenance Agreement is tailored to support your equipment configuration and your requirements.

After considering these advantages, we are sure you can see how a Maintenance Agreement is an important and cost-effective investment.

For more information, please contact your local HP Sales and Service Office. The HP Sales and Service Offices are listed in Appendix E.

To help us in preparing new manuals, there is a questionnaire in the back of this manual. Your feedback is our only way of evaluating the relevance of our manuals to our customers.

Your answers to the five questions can assist us in producing better, more useful manuals. After using this manual, please complete the questionnaire and mail it. The postage is prepaid. Thank you.

Chapter 2

Installation

This section contains the installation and connection procedures for the HP 9875A Cartridge Tape Unit (CTU).

Cartridge Tape Unit Inspection Procedures

The individual parts of your cartridge tape unit were thoroughly inspected before they were shipped to you. The cartridge tape unit should be in good operating order. Carefully check the cartridge tape unit, the HP-IB cable and other items for any physical damage sustained in transit. Notify your nearest HP Sales and Service Office and file a claim with the carrier if any such damage has occurred.

Please check to ensure that you have received all of the items which you ordered and that the cartridge tape unit has the correct options installed for your system. Refer to the table on this page and check that you have received all of your equipment.

If you have any difficulties with your system, if it is not operating properly or if any items are missing, please contact the HP Sales and Service Office nearest you. A listing of the Sales and Service Offices can be found in Appendix E.

Equipment Supplied

The following items are packaged with the HP 9875A Cartridge Tape Unit:

	H/P part number
Operating Manual	09875-90000
Tape Cartridge	9162-0061
Tape Head Cleaner	8500-1251
Spare Fuses	
1A	2110-0007
.5A	2110-0202

Power Cord (Appropriate cord supplied, based on origin of sale order).

Table 1: Equipment Supplied

Grounding Requirements

To protect operating personnel, the National Electronic Manufacturers' Association (NEMA) recommends that the cartridge tape unit be properly grounded. The cartridge tape unit is equipped with a three conductor power cable which, when connected to an appropriate power receptacle, grounds the cartridge tape unit. To preserve this protection feature, do not operate the cartridge tape unit from an AC power outlet which has no ground connection.

Power Requirements

The HP 9875A Cartridge Tape Unit has the following power requirements:

Line Voltage	100 VAC, 120 VAC, 220 VAC, 240 VAC,	} +6%, -13%
Line Frequency:	48 to 66 Hertz	
Power Consumption:	100 V @ 800 mA 120 V @ 680 mA 220 V @ 380 mA 240 V @ 350 mA	

Power Cords

Power Cords supplied by HP will have polarities matched to the power input socket on the cartridge tape unit, as shown in Figure 2-1.

L – Line or Active Conductor (also called “line” or “hot”)

N = Neutral or Identified Connector

E = Earth or Safety Ground

WARNING

IF IT IS NECESSARY TO REPLACE THE POWER CORD, THE REPLACEMENT CORD MUST HAVE THE SAME POLARITY AS THE ORIGINAL. OTHERWISE A SAFETY HAZARD FROM ELECTRICAL SHOCK TO PERSONNEL, WHICH COULD RESULT IN INJURY OR DEATH, MIGHT EXIST. IN ADDITION, THE EQUIPMENT COULD BE SEVERELY DAMAGED IF EVEN A RELATIVELY MINOR INTERNAL FAILURE OCCURRED.

Power cords with different plugs are available for the cartridge tape unit; the part number of each cord is shown below. Each plug has a ground connector. The cord packaged with each cartridge tape unit depends upon where that cartridge tape unit is to be delivered. If your cartridge tape unit has the wrong power cord for your area, please contact your nearest HP Sales and Service Office.

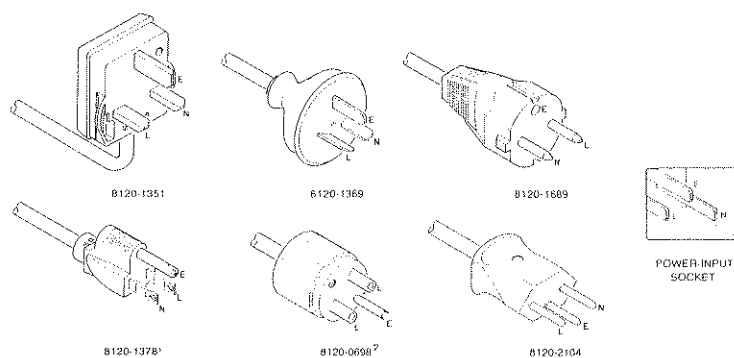


Figure 2-1: Power Cords

- 1 UL and CSA approved for use in the United States of America and Canada with cartridge tape units set for either 100 or 120 VAC operation.
- 2 UL and CSA approved for use in the United States of America and Canada with cartridge tape units set for either 220 or 240 VAC operation.

Line Voltage

The HP 9875A Cartridge Tape Unit must be set for the powerline voltage in your area. The figure below shows the correct settings for each nominal line voltage. If it is necessary to alter the setting of either switch, turn power off to the cartridge tape unit and insert the tip of a small screwdriver into the slot on the switch. Slide the switch so that the position of the slot corresponds to the desired voltage as shown in Figure 2-2.

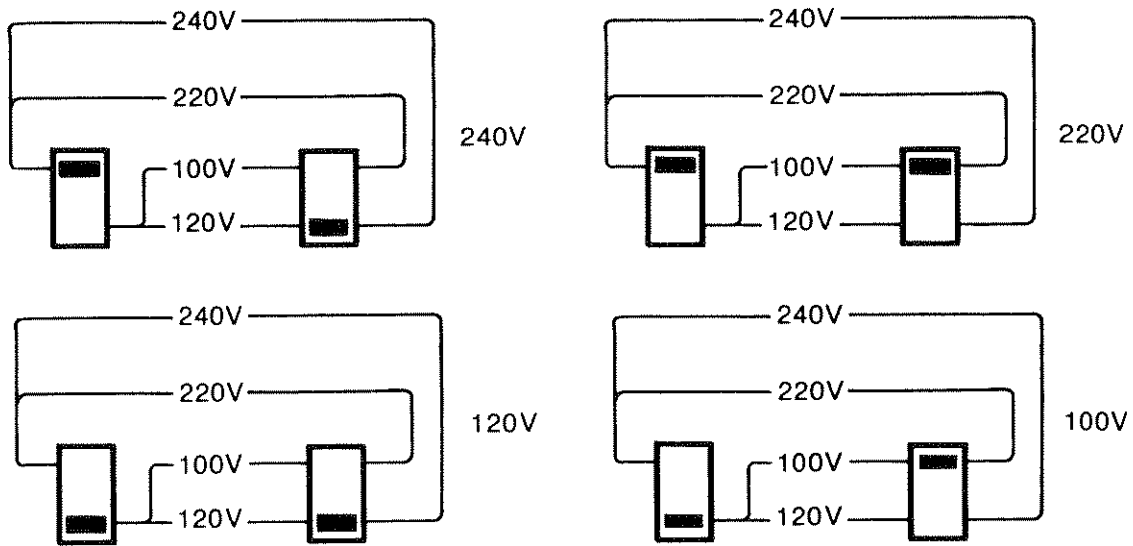


Figure 2-2: Nominal Line Voltage Settings

Fuses

The cartridge tape unit uses the following line fuses:

Line Voltage	Fuse	Part Number
100 or 120 VAC	1A	2110-0007
220 or 240 VAC	.5A	2110-0202

WARNING

TO AVOID THE POSSIBILITY OF SERIOUS INJURY, DISCONNECT THE AC POWER CORD BEFORE REMOVING OR INSTALLING A FUSE.

To change the fuse, first disconnect the power cord to the cartridge tape unit. Then remove the fuse cap by pressing inward while twisting it counterclockwise. Remove the fuse from the cap and insert the correct replacement fuse (either end) into the cap. Finally put the fuse and cap back into the holder. Press on the cap and twist it clockwise until it locks into place.

Rack Mounting

The HP 9875A Cartridge Tape Unit can be adapted for rack mounting installation. Your particular rack mounting installation may require that you select the bus address (page 11) before rack mounting the cartridge tape unit.

The additional parts which are required for rack mounting are:

Table 2: Rack Mounting Parts

Half-Module Rack Assembly (Option 002) (09875-80002)		
Part Number	TQ	Description
2510-0193	4	Screws 8-32 x 3/8" P.H.
5020-8862	1	Rack Mounting Flange (5 1/4")
5061-0006	1	Half Module Rack Adapter (5 1/4")

Side By Side Rack Assembly ¹		
Part Number	TQ	Description
0050-0515	4	Front Horizontal Lock Links
0050-0516	2	Rear Horizontal Lock Links
2510-0192	4	Screws 8-32 x 1/4" F.H.
2510-0193	4	Screws 8-32 x 3/8" P.H.
2360-0360	4	Screws 6-32 x 7/16" F.H.
5020-8862	2	Rack Mounting Flange (5 1/4")

¹ This configuration is possible only when mounting cabinets of equal depth together.

The rack mounting adaption is shown in Figure 2-3.

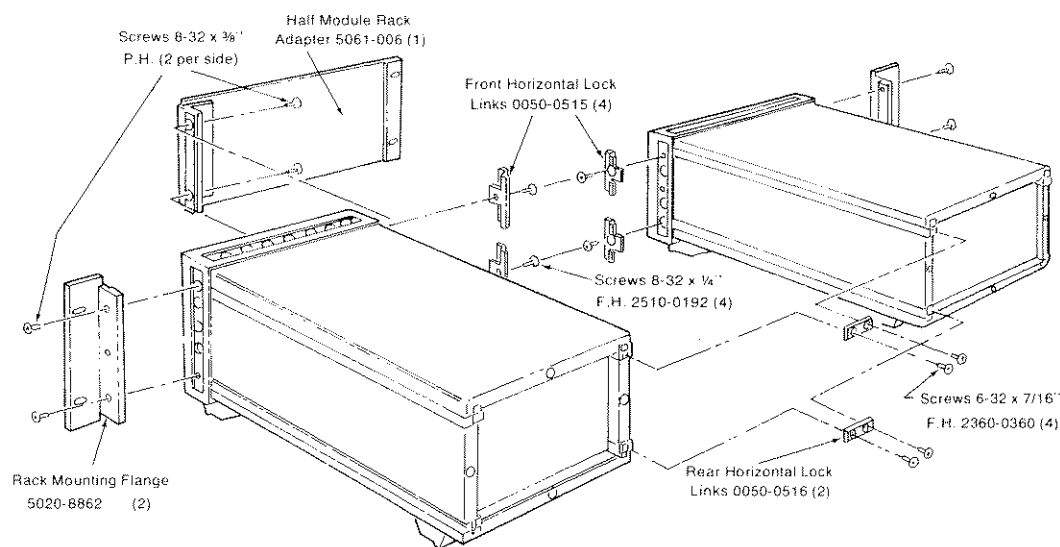


Figure 2-3: Rack Mounting Adaption

¹ Units can be mounted together only when cabinets are of equal depth.

Interface Connection

CAUTION

THE CTU AND THE INTERFACE SYSTEM (CONTROLLER AND ALL INTERCONNECTED DEVICES) MUST HAVE THE POWER SWITCHED OFF BEFORE CONNECTING THE INTERFACE. FAILURE TO DO THIS CAN RESULT IN DAMAGE TO THE EQUIPMENT.

The HP 9875A Cartridge Tape Unit is connected to the controller via the HP-IB. The following interfaces are used to connect the HP 9875A Cartridge Tape Unit to HP Desktop Computers and Controllers. The interface should be connected to the cartridge tape unit as shown in the photo (Figure 2-4).

Table 3: HP-IB Interfaces

Interface	Controller
HP 98135A	9815A
HP 98034A	9825A
HP 59405A Opt. 30	9830A, 9820A, 9821A
HP 98034A	9831A
HP 98034A	9845A

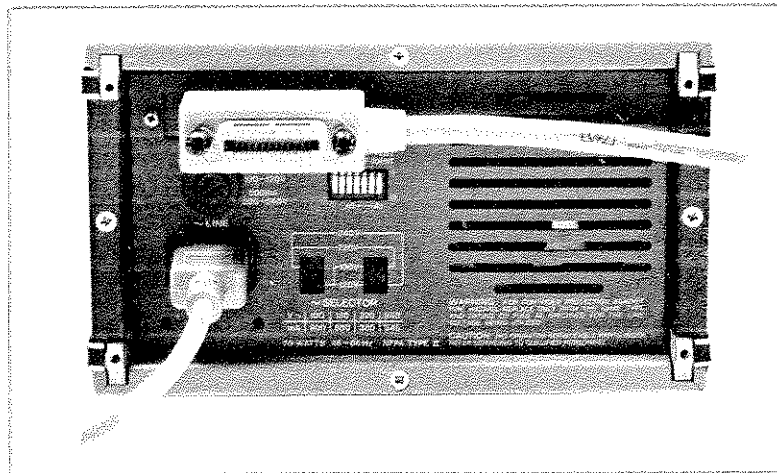


Figure 2-4: Connecting the Interface

Cartridge Tape Unit Address Code

Since each HP-IB system can have as many as 15 devices connected to it, each device must be set to a specific address code.

The cartridge tape unit can be set to any one of 30 HP-IB addresses ranging from 0 through 29. (Address 30 is reserved for Listen Only Mode; Address 31 is reserved for Talk Only Mode.) Each address can be selected by setting the switches on the cartridge tape unit rear panel. Set the switches to the appropriate binary bit positions for the particular address desired. A complete listing of available bit positions is shown in Table 4.

The cartridge tape unit is set to an address code of 4 at the factory. Check your cartridge tape unit for the proper switch positions.

Table 4: Available Bus Addresses and Codes

Address Characters		Address Switch Settings					Address Codes
Listen	Talk	(5)	(4)	(3)	(2)	(1)	decimal
SP	@	0	0	0	0	0	0
!	A	0	0	0	0	1	1
"	B	0	0	0	1	0	2
#	C	0	0	0	1	1	3
\$	D	0	0	1	0	0	4 ← preset
%	E	0	0	1	0	1	5
&	F	0	0	1	1	0	6
'	G	0	0	1	1	1	7
(H	0	1	0	0	0	8
)	I	0	1	0	0	1	9
*	J	0	1	0	1	0	10
+	K	0	1	0	1	1	11
,	L	0	1	1	0	0	12
-	M	0	1	1	0	1	13
.	N	0	1	1	1	0	14
/	O	0	1	1	1	1	15
0	P	1	0	0	0	0	16
1	Q	1	0	0	0	1	17
2	R	1	0	0	1	0	18
3	S	1	0	0	1	1	19
4	T	1	0	1	0	0	20
5	U	1	0	1	0	1	21
6	V	1	0	1	1	0	22
7	W	1	0	1	1	1	23
8	X	1	1	0	0	0	24
9	Y	1	1	0	0	1	25
:	Z	1	1	0	1	0	26
;	[1	1	0	1	1	27
<]	1	1	1	0	0	28
=	^	1	1	1	0	1	29
_	^	1	1	1	1	0	30 ← listen only
/	-	1	1	1	1	1	31 ← talk only

Both the Interface Select Code and the Cartridge Tape Unit Address Code should be entered on your HP-IB worksheet in Appendix C. This worksheet enables you to keep track of all the address settings for your interface system.

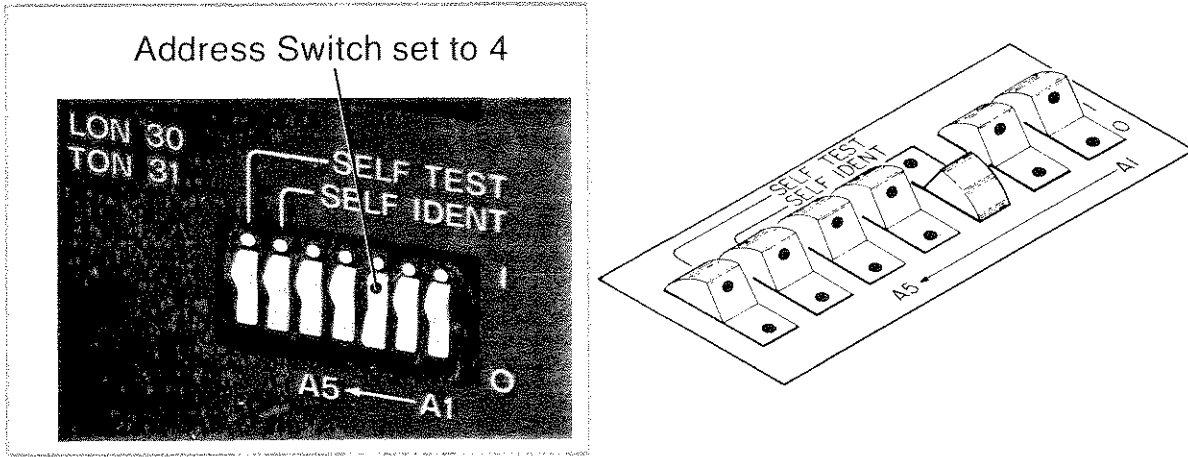


Figure 2-5: Setting the Address Switches

Power On Procedure

1. Verify that the line voltage switch settings are correct.
2. Verify that the proper fuse is installed.
3. Verify that the self-test switch is off unless you are conducting a self-test. The self-test switch is shown in the photo below (Figure 2-6).

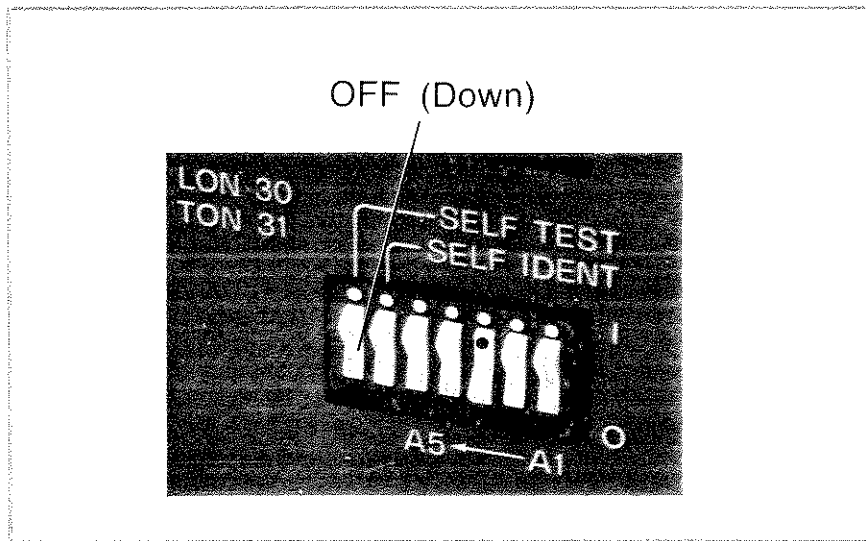


Figure 2-6: Self Test Switch OFF

4. Verify that the power cord is connected to the CTU and the outlet.
5. Enable power by depressing the switch on the front panel (Figure 2-7).
6. Verify that one of the front panel lamps is lit. If it is flashing, refer to the Self Test in this chapter.

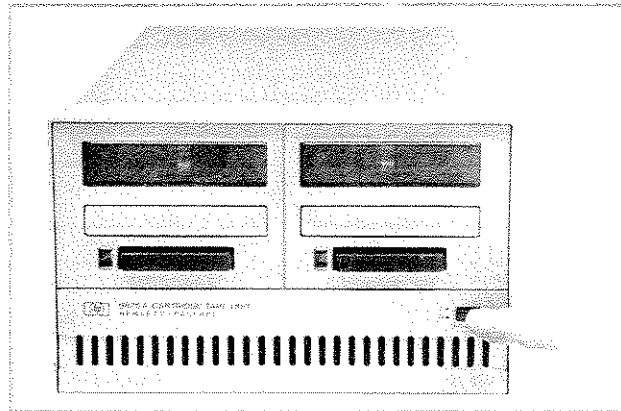


Figure 2-7: Enabling Power to the CTU

Tape Cartridge

The tape cartridge is shown in the photo below.

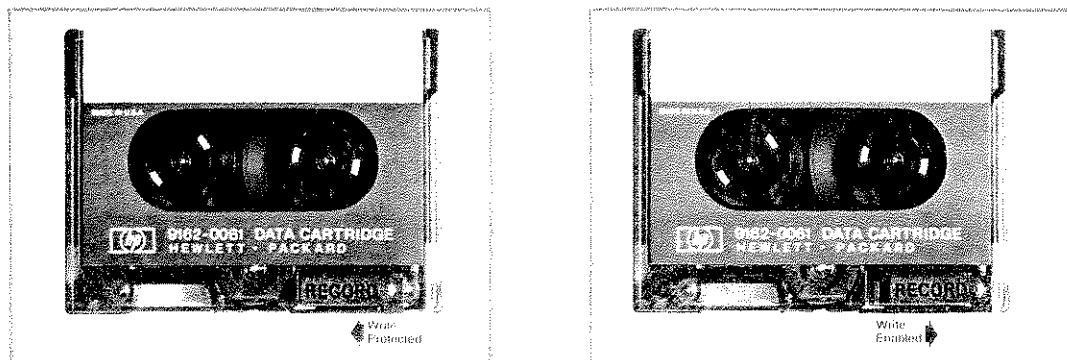


Figure 2-8: Tape Cartridge Write Protection

The cartridge has a write protect tab. When the tab is slid all the way in the direction of the arrow data can be recorded on the tape. When the tab is slid all the way against the direction of the arrow, data cannot be recorded on the tape. This is referred to as being “write protected”.

Inserting and Removing the Cartridge

Insert the tape cartridge so that the label on the cartridge faces the window in the front panel, as shown in the photo below.

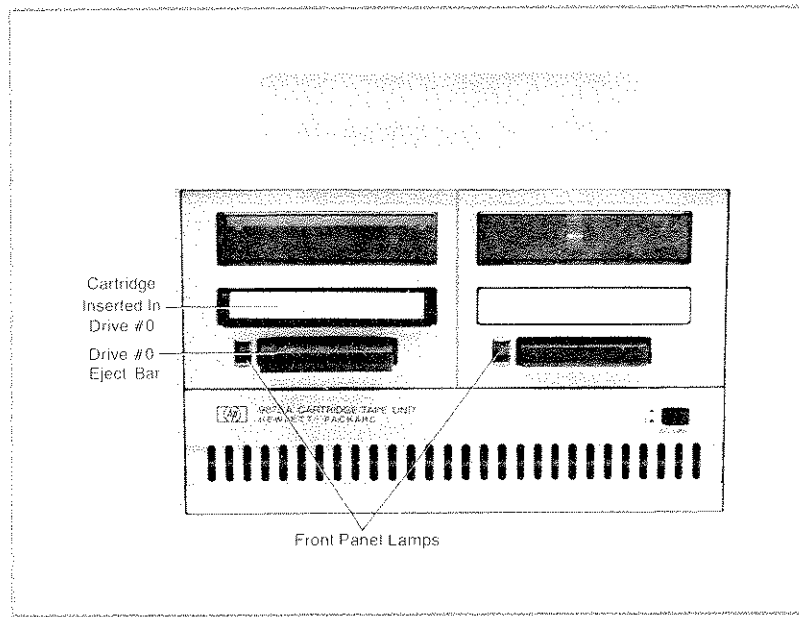


Figure 2-9: Inserting the Tape Cartridge

The cartridge can be removed from the drive by pressing the eject bar.

The front panel lamps are used to indicate which tape drive is selected. A flashing front panel lamp indicates that the CTU is in an error condition. Refer to the section on Handling Errors in Chapter 6.

Cartridge Tape Unit Care

The HP 9875A Cartridge Tape Unit should be periodically cleaned.

Dirt and dust are by far the greatest cause of cartridge related errors. Several basic precautions can reduce such problems substantially.

Magnetic Tape Head

To ensure the reliability of tape operation, it is recommended that the tape head be cleaned after every eight hours of tape operations. It's a good idea to clean the tape head before making important recordings.

The tape head is cleaned as follows:

1. Remove the tape cartridge if installed.
2. Clean the tape head with a cotton swab that has been dampened with head cleaning solution (HP P/N 8500-1251). Wipe the top of the head a few times with the cotton swab. Remove any other dust that has accumulated in the vicinity of the tape head.

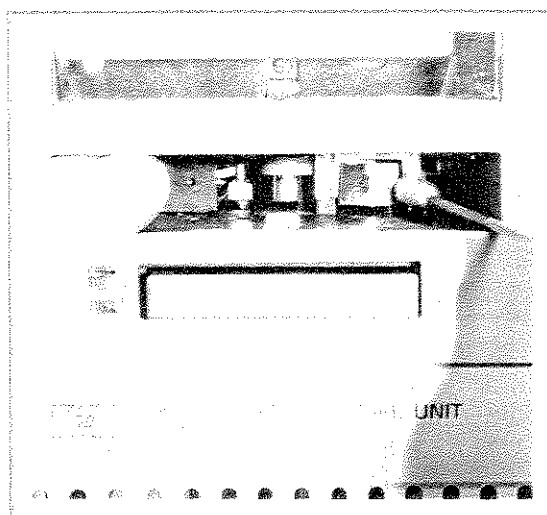


Figure 2-10: Cleaning the Read/Write Head

Tape Care

Tape Cartridge

1. Rewind the cartridge after each use
2. Keep the tape transport door clean.
3. Keep the cartridge in the plastic container supplied with it.

Two other factors can affect the reliability of the tape cartridge. Strong magnetic fields can erase data and programs stored on the cartridge. Physical damage to the tape, such as wrinkled or folded tape can also cause write and read problems. Since loss of data can be an inconvenience at best, and a disaster at worst, you should always maintain a back-up copy for critical programs or data on a separate tape cartridge.

Conditioning The Tape

Repeated operations over a short length of tape (usually less than 4000 bytes or 1.5m (5 ft.)) can cause slack (extreme changes in temperature can also cause this). The outer layer of tape can slip and rub on the cartridge, causing damage to the tape. If tape drive operation continues, the tape may jam and be ruined.

NOTE

This problem is most likely to occur if exclusive use is made of one file or two adjacent files near the beginning or end of tape.

If a particular application requires such operation, this slack can be prevented by conditioning the tape periodically. Conditioning the tape can be done by executing a FE instruction, followed by a RW instruction. The FE and RW instructions are explained in Chapter 5.

Respooling the Tape

If the tape unwinds completely from one of the reels, refer to Figure 2-11 using the following procedure to rethread the tape.

1. Remove the 4 screws holding the cartridge cover and remove the cover.
2. Thread the tape around the guides as shown in the figure.
3. With the tape extended almost to the drive belt, moisten the end of the tape so that it will stick to the take-up reel.

Use a pencil (or other sharp instrument) to guide the tape between the drive belt and the take-up reel. Keeping the tape taut, wind the tape onto the take-up reel using the pencil.

As you wind the tape onto the reel, ensure that there is no slack in the tape. If the tape is not tight, repeat the operation. Be sure the tape follows the hub around for the first turn.

Wind at least 20 turns of tape onto the reel by turning the drive roller. If any rollers creep up away from the plate, press them back again.

Reassemble the cartridge.

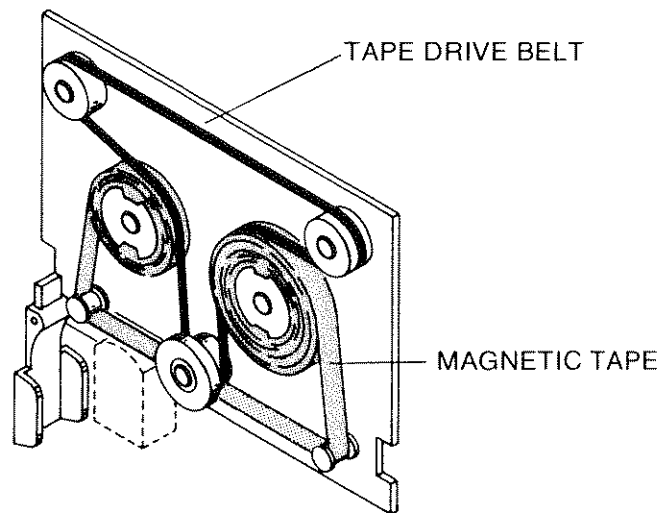


Figure 2-11: Tape Cartridge

Self Test

The Self Test is used to verify proper operation of the CTU. Whenever power is applied to the CTU, the CTU automatically conducts a test of the internal electronic circuitry.

The read/write tape circuitry can only be tested by inserting a tape cartridge into the CTU. A dual-drive CTU requires that a tape cartridge be inserted in each tape drive.

Self Test Procedure

1. Turn power off to the CTU.
2. Insert a tape cartridge (preferably blank) into each tape drive of the CTU. The record protect tab must be positioned so that data can be recorded on the tape (tab slid in the direction of the arrow). The Self Test records data on the tape. Therefore you should use a tape which does not contain any important data.

3. Set the Self Test switch on the rear panel of the CTU on, as shown in the photo.

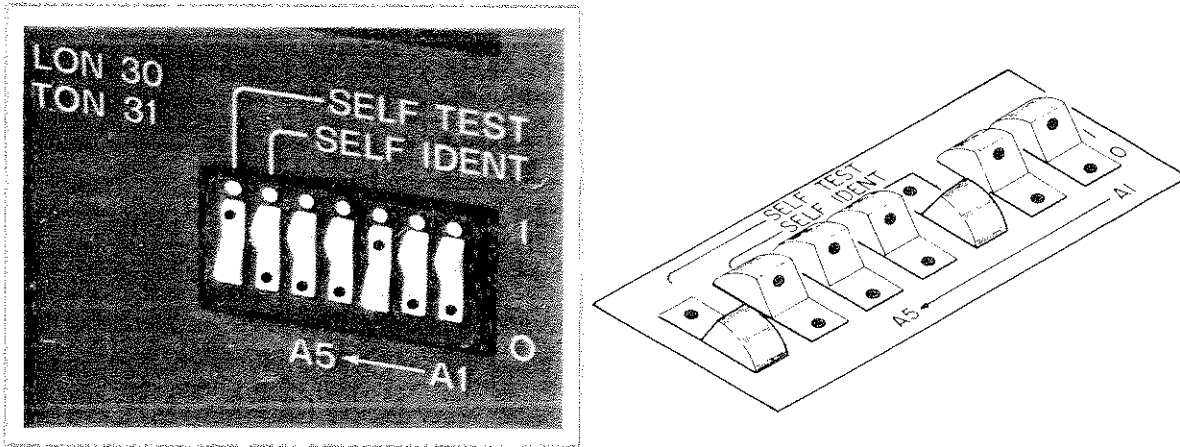


Figure 2-12: Self Test Switch On

4. Turn power on to the CTU.

The test results are displayed by the lamps on the front panel of the CTU. If the CTU has failed the Self Test, a front panel lamp flashes.

A common error during the Self Test occurs when the cartridge is write protected, or is not installed in the CTU while the CTU is running the Self Test. If either of these two conditions exist, correct them and re-run the Self Test.

Another source of Self Test failure is a defective tape. Re-running the test with a new tape may be all that is required to verify the operation of the CTU.

If the indicator lamp is still flashing, contact your nearest HP Sales and Service Office.

A more comprehensive testing of your system (controller and interface) can be accomplished by using your controller to output the Self Test and Output Error commands. The Self Test command is explained in Chapter 5, Syntax.

A detailed listing of the Self Test results is found in Chapter 5, under the Output Error command.

NOTE

The self test switch must be switched off for normal operation of the CTU. If the self test is not off, the CTU can only respond to the OE and OS commands. *cannot respond to commands.*

Chapter 3

HP-Interface Bus

Overview of the HP-Interface Bus

The HP Interface Bus (HP-IB) is Hewlett-Packard's implementation of the IEEE standard 488-1975. The HP-IB provides an interconnecting channel for data transfer between devices on the HP-IB.

The following is a definition of the terms and concepts used to describe HP-IB (bus) system operations.

HP-IB System Terms

1. **Addressing** – The characters sent by a controlling device specifying which device sends information on the bus and which device(s) receives that information.
2. **Byte** – A unit of information consisting of 8 binary digits (bits).
3. **Device** – Any unit that is compatible with the IEEE Standard 488-1975.
4. **Device Dependent** – A response to information sent on the HP-IB that is characteristic of an individual device's design and may vary from device to device.
5. **Operator** – The person that operates either the system or any device in the system.
6. **Polling** – The process typically used by a controller to locate a device that needs to interact with the controller. There are two types of polling:
 - **Serial Poll** – This method obtains one byte of operational information about an individual device in the system. The process must be repeated for each device from which information is desired.
 - **Parallel Poll** – This method obtains information about a group of devices simultaneously.

Interface Bus Concepts

Devices which communicate along the interface bus can be classified into three basic categories:

1. **Talkers** – Devices which **send** information on the bus when they have been addressed.
2. **Listeners** – Devices which **receive** information sent on the bus when they have been addressed.
3. **Controllers** – Devices that can specify the talker and listeners for an information transfer. Controllers can be categorized as one of two types:
 - **Active Controller** – The current controlling device on the bus.
 - **System Controller** – The controller that can take priority control of the bus even if it is not the current active controller. Although each bus system can have only one system controller, the system can have any number of devices capable of being the active controller.

A typical HP-IB System is shown below.

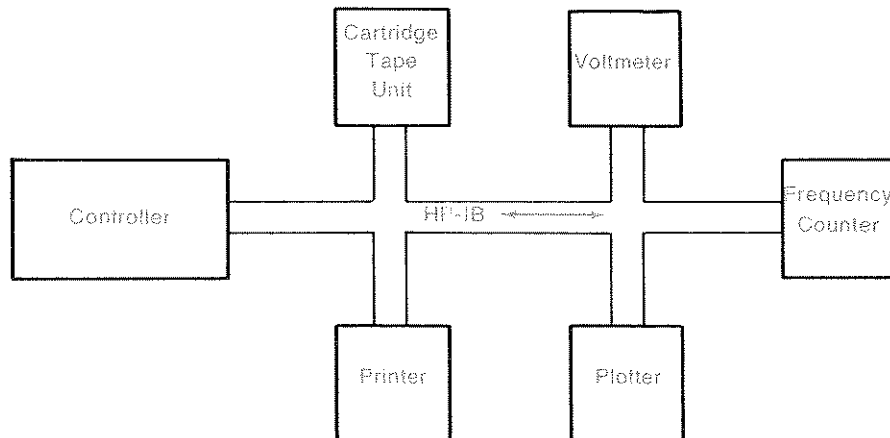


Figure 3-1: Typical HP-IB System

Message Concepts

Devices which communicate along the interface bus are transferring quantities of information. The transfer of information can be from one device to another device, or from one device to more than one device. These quantities of information can easily be thought of as “messages”.

In turn, the messages can be classified into twelve types. The HP 9875A Cartridge Tape Unit is capable of implementing only six of the twelve interface messages. The six implemented messages are screened in the following explanations. The six implemented messages are also listed in Table 5. This information is also entered on the HP-IB worksheet in Appendix C.

1. **The Data Message.** This is the actual information which is sent from one talker to one or more listeners along the interface bus.
2. **The Trigger Message.** This message causes the listening device(s) to perform a device-dependent action.
3. **The Clear Message.** This message causes either the listening device(s) or all of the devices on the bus to return to their predefined device-dependent states.
4. **The Remote Message.** This message causes listening devices to switch from local front-panel control to remote program control.
5. **The Local Message.** This message clears the **Remote Message** from the listening device(s) and returns the device(s) to local front-panel control.
6. **The Local Lockout Message.** This message prevents a device operator from manually inhibiting remote program control.
7. **The Clear Lockout and Set Local Message.** This message causes all devices on the bus to be removed from **Local Lockout** and revert to **Local**. This message also clears the **Remote Message** for all devices on the bus.
8. **The Require Service Message.** A device can send this message at any time to signify that the device needs some type of interaction with the controller. This message is cleared by the device's **Status Byte Message** if the device no longer requires service.
9. **The Status Byte Message.** A byte that represents the status of a single device on the bus. One bit indicates whether the device sent a **Require Service Message** and the remaining bits indicate operational conditions defined by the device. This byte is sent from a talking device in response to a serial poll operation performed by a controller.
10. **The Status Bit Message.** A byte that represents the operational conditions of a group of devices on the bus. Each device responds on a particular bit of the byte thus identifying a device-dependent condition. This bit is typically sent by devices in response to a parallel poll operation.

The Status Bit Message can also be used by a controller to specify the particular bit and logic level that a device will respond with when a parallel poll operation is performed. Thus more than one device can respond on the same bit.

11. **The Pass Control Message.** This transfers the bus management responsibilities from the active controller to another controller.
12. **The Abort Message.** The system controller sends this message to unconditionally assume control of the bus from the active controller. This message terminates all bus communications but does not implement a **Clear Message**.

These messages represent the full implementation of all HP-IB system capabilities. Each device in a system, may be designed to use only the messages that are applicable to its purpose in the system. It is important for you to be aware of the HP-IB functions implemented on each device connected to your HP-IB system to ensure the operational compatibility of the system. (The IEEE equivalent flowcharts of these messages may be found in Appendix B.)

Table 5: Implemented Messages

Implemented	Capability	Not Implemented
Data	S & R	Trigger
Clear	R	Local
Require Service	S	Remote
Status Byte	S	Local Lockout
Status Bit	S	Clear Lockout and Set Local
Abort	R	Pass Control
S = Send Only		
R = Receive Only		
S & R = Send and Receive		

Bus Protocol Addressing

The commands for the cartridge tape unit are transmitted along the interface in the following form:

Bus Address Parameters	(Command) Data	Terminator (EOC)
---------------------------	-------------------	---------------------

The Bus Address Parameters specify where the data is originating (talker) and the destination where the data is being received (listener). Some controllers automatically send the proper transfer parameter for origination or destination depending upon the type of message which is being sent. You should refer to your controller's operating manual to determine if any additional transfer parameters need to be sent.

The command consists of three things: a two-letter mnemonic, parameters if needed, and an EOC which terminates the command (the end of command character).

The EOC accepted by the CTU can be one of three things:

1. An ASCII Linefeed (LF).
2. An ASCII Semi-colon (;).
3. An interface EOI sent with the last byte of the command.

After a controller has addressed the CTU to listen, the command is sent to the CTU as the data portion of the message. In this example it is

$\frac{\text{'FF'}}{\text{Command}}$	$\frac{\text{'1,2'}}{\text{Parameter Field}}$	$\frac{\text{LF}}{\text{Terminator}}$
--------------------------------------	---	---------------------------------------

This data is interpreted by the CTU as a Find File command. The parameter field specifies that the tape should be positioned at file 1, record 2. The LF is output by the controller as the command terminator.

The command is sent in ASCII code and the command is a two-letter mnemonic (either upper or lowercase).

Chapter 4

Tape Format

The cartridge tape unit stores data on the magnetic tape cartridge in HP's Standard Interchange Format (SIF). This format has been implemented to allow data to be exchanged between devices which use magnetic tape cartridges as a storage medium.

The Standard Interchange Format is based on the concepts of Files and Records.

Tracks

There are two physical tracks available for recording data on the cartridge. The HP 9875A treats the two physical tracks as one logical track. An end of valid data mark is used to indicate the logical end of the tape.

Files

Data is stored in logical structures called "Files". Each file is comprised of smaller units called "Records".

A tape cartridge can contain up to 2047 files, depending on the file size. Each file may contain up to 4096 records.

The geometry of a tape file is shown in Figure 4-1.

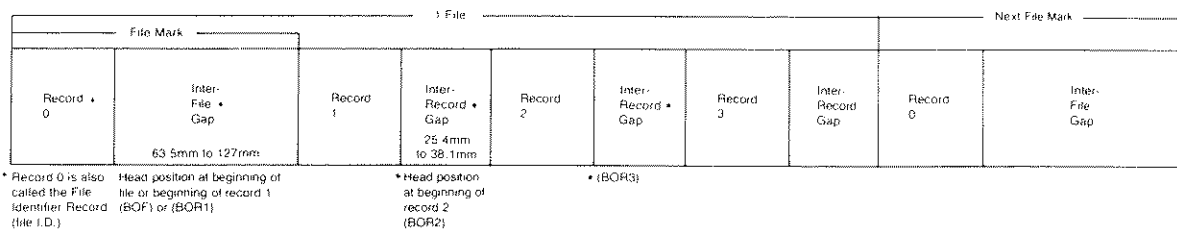


Figure 4-1: File Geometry

A File is comprised of the File mark and the File body.

The File Identifier Record and the Interfile Gap compromise the File Mark. A File Mark is found at the beginning of each file on the tape.

The File body is comprised of records and inter-record gaps.

Records

Records are “subsets” of files. Each record can store up to 256 bytes of data. The record geometry is shown in Figure 4-2.

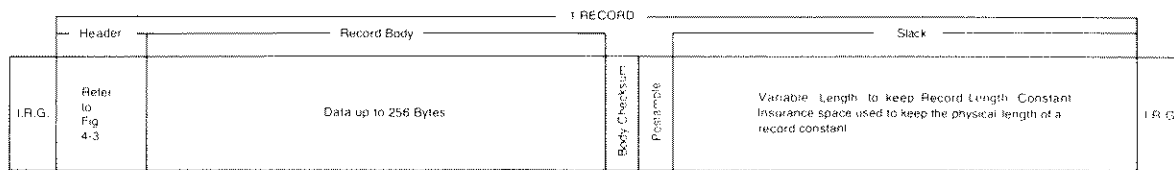


Figure 4-2 : Record Geometry

All records within a File must have the same absolute length. There are two types of records, “non-updateable” and “updateable”.

A record with its absolute size equalling zero cannot have its contents changed. This defines a “non-updateable” record. It is possible to have the absolute size equal zero and the used size be a non-zero value. An “updateable” record is a record whose contents can be changed.

The Record header contains the “bookkeeping” for each record of data stored on the tape.

The physical record number is the binary equivalent of the record number’s decimal value. All records are numbered sequentially.

The Record Body is the area where the data is recorded. The Body Checksum is a sum of the number of words in the record body.

The Postamble is an arbitrary word which is not intended to be read.

The Slack area is an area which maintains a uniform record length. It compensates for the record body length, speed variations and insurance space to maintain the overall record length. There is no Slack in a non-updateable record.

The Slack is followed by the Inter-Record Gap (IRG). The IRG is a gap of 25.4mm to 38.1mm which can be followed by either another record, a file mark or the End of Valid Data Mark.

The record header is shown in Figure 4-3.

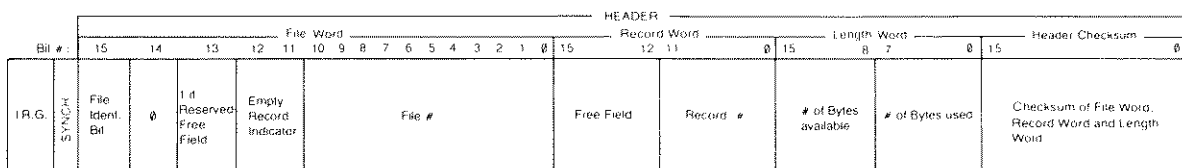


Figure 4-3: Header Geometry

The file word consists of the file number (bits 0–10), the empty record indicator (bits 11 and 12), the reserved bit (bit 13), bit 14 is always 0, and the file identifier bit (bit 15).

The file number is the numeric value of the file number in binary form.

The empty record indicator can be one of two types as shown below.

Bit 12	Bit 11	
0	0	Empty. The record body should not be read.
0	1	Not empty.
1	0	Not empty.
1	1	Not empty.

The reserved bit indicates that the free-field pattern in the record word has been reserved for a particular instrument. The reserved bit may be used to indicate that the data contained in a record has product specific meaning. Tapes recorded on the CTU have this bit set to “0”.

The file identifier bit is used to identify a file identifier record. If the file identifier bit is a “1”, this signifies that the record is a file identifier record.

The Record Word consists of the physical record number (bits 0 through 11) and the free-field (bits 12 through 15). The record number is the binary equivalent of its numeric value. In a file identifier record, this number is 0. The free-field provides four bits which, if reserved, indicate that the tape was written by a particular device. The CTU does not reserve the free field. Data written by a device using a reserved free field pattern is processed the same as non reserved data by the CTU. The free field pattern may be used for storing an additional four bit pattern, at your convenience.

The length word is divided into the number of bytes used (bits 0 through 7) and the absolute number of bytes available in the record (bits 8 through 15).

The Header Checksum is a checksum of the three (file word + record word + length) previous words.

File Identifier Record

The File Identifier Header is record #0 of a file. It is similar in structure to the Record Header shown in Figure 4-3. The File Identifier Header is followed by the interfile gap.

The Record Header is identical to the File Identifier Header with the following exception:

the File Identifier bit is a “0” for a record instead of a “1” for a File Identifier Header.

End of Valid Data Mark

The End of Valid Data Mark (EVD) signifies the logical end of a tape. No accessible data can exist after the EVD.

The EVD is a 317mm gap after the last record on the tape, as shown in Figure 4-4. There is only one EVD mark per tape.

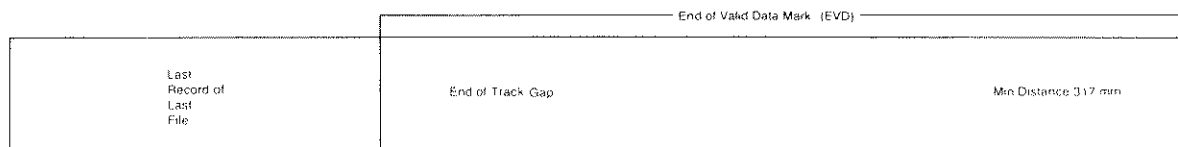


Figure 4-4 : End of Valid Data Mark (EVD)

Chapter 5

Syntax

The HP 9875A Command Set

The Cartridge Tape Unit (CTU) responds to 23 commands. Each of these commands belongs to one of four categories.

1. Immediate Execution (IE)
2. Data Input (DI)
3. Data Output (DO)
4. Parameter Output (PO)

An immediate execution command is one in which after the command is received and executed, the CTU is ready for its next command.

A data input command is one in which after the command is received and executed, the CTU is ready to receive a data list which is to be stored on the tape cartridge.

A data output command is one in which after the command is received and executed, the CTU is ready to output a previously stored data list to a device.

A parameter output command is one in which after the command is received and executed, the CTU is ready to output parameters to the controller. These parameters contain coded information that relates to the condition of the CTU or the tape.

Table 6: Parameter Output Format

Field Width	Inter-Parameter Delimiter	Parameter List Delimiter
5 characters per parameters. Parameters are sent with leading spaces.	comma	carriage return/ linefeed

You have the option of reading all, some, or none of the parameters which are returned by the CTU in a parameter output command. The only stipulation is that if you are interested in reading a parameter, you must read all parameters which precede it.

For example, if you only want to read the fifth parameter being returned, you must also read parameters one through four or an error condition may occur.

A listing of the command syntax is shown in Table 7.

Table 7: Command Syntax

Command	Total Number of Parameters	Description	Type
AV	1 (1)	Enables or disables Auto Verification of recorded data list	IE
ED	3 (3)	Changes EOD terminator	IE
FE	0	Finds end of recorded data on tape	IE
FF	2 (1)	Finds specified file & record	IE
IF	1 (1)	Identifies file (3 parameters returned)	PO
IM	2 (2)	Sets require service and parallel poll response mask	IE
IR	1 (1)	Identifies Record (5 parameters returned)	PO
MF	5 (3)	Reserves file space on tape	IE
MR	2 (2)	Reserves record recording space on tape	IE
OE	0	Returns error codes and self test results (5 parameters returned)	PO
OS	0	Returns status byte value (1 parameter returned)	PO
RF	1 (1)	Reads contents of specified file	DO
RI	1 (1)	Reads contents of File I.D. record (record 0) of specified file	DO
RR	1 (1)	Reads contents of specified record	DO
RW	0	Rewinds the tape	IE
SD	1 (1)	Specifies a drive for commands to apply to	IE
SF	1 (1)	Stores contents of the following data list into the specified file	DI
SI	1 (1)	Stores contents of the following data list into File ID (Record 0) of the specified file	DI
SR	1 (1)	Stores contents of the following data list into the specified record	DI
ST	0	Initiates self-test	IE
TI	1 (1)	Specifies a time interval for use with data input/output commands	IE
WF	0	Creates a file and stores the following data list into it	DI
WR	0	Creates a record and stores the following data list into it	DI

(1) Number in parentheses is the number of optional parameters. Refer to syntax explanation for detailed information.

Syntax Guidelines

The following general conventions apply to the syntax which is listed in this manual.

- AB – all items shown in color must be entered as shown.
- [] – all items in square brackets are optional and explained in the text following the syntax.

The CTU is designed so that the command mnemonics can be either uppercase (AB) or lowercase (ab) characters and still be processed.

Any numeric parameters must be sent in fixed point notation. The CTU truncates any fractions that are sent in fixed point format. The CTU does not accept floating point values as parameters.

Any optional parameter can be skipped by sending an ASCII comma. Whenever a parameter is skipped the CTU uses the default value for that parameter.

At power on, or after a device clear message, the following conditions apply to the CTU.

Table 8: Initialized Conditions

Autoverify mode	disabled
End of Command Character	ASCII LF or Semi-colon
End of Data List Character	ASCII LF
Parallel Poll Response Mask	0
Require Service Mask	0
Select Drive	tape drive 0
Time Interval	off

Since this cartridge tape unit may be used with any HP-IB compatible controller, a typical usage example is given for each command. The examples are written for the cartridge tape unit (CTU). The controller's condition is not referred to in the examples. The examples are structured as shown below, using the following acronyms.

Cartridge Tape Unit (CTU)	Talker (T)
End of Command Character (EOC)	Listener (L)
End of Data List Character (EOD)	

(CTU-L) "RW" (EOC)

This example shows that the cartridge tape unit is the listener. The command is RW (rewind), and the controller is sending the end of command character at the end of the message.

Automatic Verify

“AV [P1]”

Command: Immediate Execution

Parameter: 0 disables verify, 1 enables verify (optional)

Parameter Limits: P1 minimum 0, maximum 1, default 0

The Automatic Verify (AV) instruction sets a mode which allows you to verify that a block of information has been stored correctly on the tape. AV causes the CTU to execute a read after writing a record of data and compare the data on tape with the contents of the CTU's memory. The read is performed under more stringent electrical requirements, to ensure that the tape will pass subsequent read operations.

The AV mode reduces the effective recording speed by a factor of approximately 3.

(CTU-L) “AV 1” (EOC)

This example enables the AV mode.

End of Data List

“ED[P1][,P2][,P3]”

Command Type: Immediate Execution

Parameter: P1 decimal value of the ASCII character

P2 number of bytes being sent in a data list

P3 continuous output specifier

Parameter Limits: P1 minimum 0, maximum 256, default 10 (ASCII Linefeed)

P2 minimum 0, maximum 65,535, default 0

P3 minimum 0, maximum 1, default 0

The End of Data List character (EOD) is used to signify that a data list is complete. This data list can either be input to the CTU or output from the CTU. The ED command allows you to specify an eight bit ASCII character which terminates the data list. At power on and after initialization, the CTU uses the decimal 10 (ASCII linefeed) as its EOD.

While decimal 256 is not an eight bit character, the use of it as the EOD requires that all data lists be terminated by an interface EOI message. Any transmission of an interface EOI with a character terminates the data list.

Care should be exercised in choosing an EOD character. If your EOD character appears as data in the data list, the CTU accepts the character and terminates the input of the data list at that point. A list of available characters for use as the EOD can be found in Table 9.

Table 9: EOD Characters

ASCII Char.	EQUIVALENT FORMS			ASCII Char.	EQUIVALENT FORMS			ASCII Char.	EQUIVALENT FORMS			ASCII Char.	EQUIVALENT FORMS		
	Binary	Octal	Dec		Binary	Octal	Dec		Binary	Octal	Dec		Binary	Octal	Dec
NULL	00000000	000	0	space	00100000	040	32	@	01000000	100	64		01100000	140	96
SOH	00000001	001	1	!	00100001	041	33	A	01000001	101	65	a	01100001	141	97
STX	00000010	002	2	"	00100010	042	34	B	01000010	102	66	b	01100010	142	98
ETX	00000011	003	3	#	00100011	043	35	C	01000011	103	67	c	01100011	143	99
EOT	00000100	004	4	\$	00100100	044	36	D	01000100	104	68	d	01100100	144	100
ENQ	00000101	005	5	%	00100101	045	37	E	01000101	105	69	e	01100101	145	101
ACK	00000110	006	6	&	00100110	046	38	F	01000110	106	70	f	01100110	146	102
BELL	00000111	007	7	'	00100111	047	39	G	01000111	107	71	g	01100111	147	103
BS	00001000	010	8	(00101000	050	40	H	01001000	110	72	h	01101000	150	104
HT	00001001	011	9)	00101001	051	41	I	01001001	111	73	i	01101001	151	105
LF	00001010	012	10	*	00101010	052	42	J	01001010	112	74	j	01101010	152	106
V _{tab}	00001011	013	11	+	00101011	053	43	K	01001011	113	75	k	01101011	153	107
FF	00001100	014	12	,	00101100	054	44	L	01001100	114	76	l	01101100	154	108
CR	00001101	015	13	--	00101101	055	45	M	01001101	115	77	m	01101101	155	109
SO	00001110	016	14	.	00101110	056	46	N	01001110	116	78	n	01101110	156	110
SI	00001111	017	15	/	00101111	057	47	O	01001111	117	79	o	01101111	157	111
DLE	00010000	020	16	0	00110000	060	48	P	01010000	120	80	p	01110000	160	112
DC ₁	00010001	021	17	1	00110001	061	49	Q	01010001	121	81	q	01110001	161	113
DC ₂	00010010	022	18	2	00110010	062	50	R	01010010	122	82	r	01110010	162	114
DC ₃	00010011	023	19	3	00110011	063	51	S	01010011	123	83	s	01110011	163	115
DC ₄	00010100	024	20	4	00110100	064	52	T	01010100	124	84	t	01110100	164	116
NAK	00010101	025	21	5	00110101	065	53	U	01010101	125	85	u	01110101	165	117
SYNC	00010110	026	22	6	00110110	066	54	V	01010110	126	86	v	01110110	166	118
ETB	00010111	027	23	7	00110111	067	55	W	01010111	127	87	w	01110111	167	119
CAN	00011000	030	24	8	00111000	070	56	X	01011000	130	88	x	01111000	170	120
EM	00011001	031	25	9	00111001	071	57	Y	01011001	131	89	y	01111001	171	121
SUB	00011010	032	26	:	00111010	072	58	Z	01011010	132	90	z	01111010	172	122
ESC	00011011	033	27	;	00111011	073	59		01011011	133	91	⌋	01111011	173	123
FS	00011100	034	28	!	00111100	074	60	\	01011100	134	92		01111100	174	124
GS	00011101	035	29	=	00111101	075	61]	01011101	135	93		01111101	175	125
RS	00011110	036	30	.	00111110	076	62	^	01011110	136	94	^	01111110	176	126
US	00011111	037	31	?	00111111	077	63	_	01011111	137	95	DEL	01111111	177	127

The EOD character is not stored on tape. It is possible to store a data list using an EOD character and then read the data list using a different EOD character.

The byte count parameter provides an alternate method of terminating the input data list. The byte count value is compared to the number of bytes which have been received by the CTU. When the values are equal, the input of the data list is terminated and the CTU becomes ready for the next command. If the byte count parameter value is 0, the byte count feature is turned off.

The CTU terminates an input data list whenever one of the following three conditions is met:

1. The EOD character is received.
2. The byte count is reached.
3. An EOI message is received by the CTU.

When the CTU is sending a data list to the interface, the EOD character is added at the end of the data list. This can cause an error if the device which is receiving (the listener) the data list does not input the EOD character.

The Continuous Output Specifier allows the CTU to handle a request for data from a device without disabling the interface when there is no data ready to be sent. A value of 0 disables the continuous output specifier. A value of 1 enables the continuous output specifier.

If the Continuous Output Specifier is on, the CTU returns the EOD character (with the EOI message set) for each request of data by a listener. Data may still be transmitted along the interface, but the CTU has generated an unexpected byte requested error.

If the Continuous Output Specifier is off, the CTU does not return a byte. The interface is disabled for data transfer by the CTU not responding to the handshake.

Table 10 summarizes the Continuous Output Specifier action.

Table 10: Continuous Output Specifier

Continuous Output Specifier	Character Returned	Interface Status	Next Action by Controller
On	EOD Character	Data can be transmitted	Recover from error
Off	No Character	Data cannot be transmitted	Abort message to interface

(CTU-L) "ED 125, 256, 1" (EOC)

This example sets the ASCII character } as the EOD character for data lists being either input to the CTU or output from the CTU. The byte count for input data lists is set to 256 bytes. The Continuous Output Specifier is on.

Find End of Valid Data

"FE"

Parameters: None

Command Type: Immediate Execution

The Find End of Valid Data (FE) command positions the tape at the end of valid data mark (EVD). You can now reserve space for data or write data on unused portions of tape without destroying previously recorded information.

The EVD position is not the physical end of the tape, but rather the end of recorded data. There is only one EVD position on a tape at any given time. After executing an FE command, the current file is not defined.

(CTU-L) "FE" (EOC)

This example causes the CTU to find the end of valid data mark on the tape.

Find File

"FF P1 [, P2]"

Command Type: Immediate Execution

Parameters: P1 file number

P2 record number (optional)

Parameter Limits: P1 minimum 0, maximum 2047

P2 minimum 0, maximum 4095, default 1

The Find File (FF) command positions the tape at a specified location. This location can be specified by both the file number and the record number.

In both cases, the tape is positioned at the beginning of the file or the beginning of the record as specified. The file number must be specified, or an error (mandatory parameter is not specified) occurs. If you do not specify a record number, the tape is positioned at the BOR position of record 1.

If you specify record 0, the tape is positioned at the beginning of the file identifier record.

(CTU-L) ‘FF 2,4’ (EOC)

This example positions the tape at the beginning of record 4 in file 2.

Identify File

‘IF [P1]’

Command Type: Parameter Output

Parameter: P1 file number

Parameter Limits: minimum 1, maximum 2047, default current file number.

The Identify File (IF) command is a parameter output command which identifies a file by three parameters. The parameters returned are:

- the file number
- the number of records in the file
- the absolute number of bytes per record

If you do not specify a file number then the file which is currently available is identified. The parameters which are returned follow the same format as the other parameter output commands. The format is shown in Table 6 on page 31.

The IF command positions the tape at the beginning of the next file. If the file identified is the last file on tape, the tape is positioned at the EVD mark.

Executing an IF command without a parameter after executing a FE command returns the next available file number.

(CTU-L) ‘IF 4’ (EOC)

(CTU-T) parameter list (CR-LF)

If the values returned were 4, 300, 50 respectively, then you would have identified file #4, with 300 records each having 50 bytes.

Identify Record

“IR [P1]”

Command type: Parameter Output

Parameter: P1 record number

Parameter Limits: P1 minimum 1, maximum 4095, default current record number (current file is assumed).

The Identify Record (IR) command is a parameter output command that identifies a record within a file by returning five parameters. The parameters have the same format as the other parameter output instructions. This format is shown in Table 6, page 31.

The five parameters returned are:

1. the record number
2. the file number
3. the absolute size of the record in bytes
4. the used size of the record in bytes
5. the free field contents

If you do not specify a record number, the record which is currently available is identified. The IR command positions the tape at the next BOR. If the record identified is the last record on the tape, the tape is positioned at the EVD mark.

(CTU-L) “IR4” (EOC)

(CTU-T) parameter list (CR-LF)

In this example, record 4 of the current file is being identified.

For this example, suppose the parameter list returns these values 4, 2, 256, 200, 0. This would mean that File 2, Record 4 has an absolute size of 256 bytes with 200 bytes of data currently recorded in it. The free field contents are 0.

NOTE

The returned free field parameter is an encoded parameter. A value from 0 to 15 indicates that the free field pattern is not reserved. A value greater than 15 indicates a reserved free field pattern. It is necessary to subtract 16 from a value greater than 15 to determine the actual free field pattern.

If the returned free field parameter is 16 or greater (reserved bit is set to “1”), special data reduction techniques may be required to achieve meaningful interchange of data from the identified record.

Input Mask

“IM [P1][, P2]”

Command Type: Immediate Execution

Parameter: P1 require service mask (decimal equivalent value)

P2 parallel poll response mask (decimal equivalent value)

Parameter Limits: P1 minimum 0, maximum 255, default 0

P2 minimum 0, maximum 255, default P1

The Input Mask (IM) command allows the CTU to send the require service message and to respond affirmatively to a parallel poll operation.

The require service mask can be set so that when a specific condition(s) occurs, the CTU sends the require service message to the controller.

Table 11: Available Conditions for SRQ and Affirmative Parallel Poll Response

Decimal Value	Condition
1.	Data buffer empty
2.	Data buffer full
4.	Ready for next command
8.	Initialized
32.	Error

(CTU-L) “IM 32, 36” (EOC)

This example allows the CTU to request service when a status value of 32 (the error indication) occurs. The CTU is set to respond to a parallel poll on condition 4 or condition 32 (ready for next command or error).

Mark File

“MF [P1, P2 [,P3] [,P4] [,P5]”

Command Type: Immediate Execution

Parameters: P1 number of files to be marked

P2 number of records per file

P3 number of bytes per record (optional)

P4 number of bytes in the File I.D. record (optional)

P5 free field pattern (optional)

Parameter Limits: P1 minimum 1, maximum 2047

P2 minimum 0, maximum 4095

P3 minimum 1, maximum 256, default 256

P4 minimum 0, maximum 256, default 0

P5 minimum 0, maximum 15, default 0

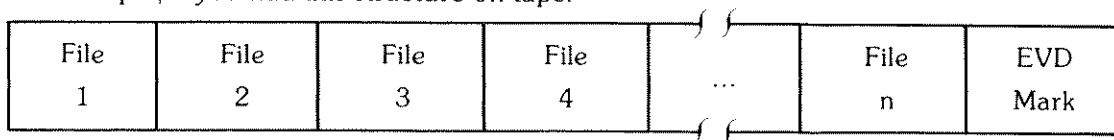
The Mark File (MF) command reserves space on the tape cartridge where data is to be stored. Before executing the MF command, the tape must be positioned at a legal starting point. The legal starting points are:

1. BOF
2. RW
3. EVD

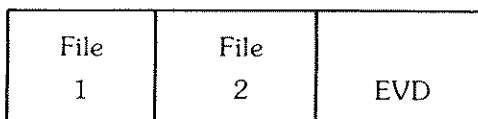
This can be accomplished by executing a RW command for an empty tape or a FE command for a tape which contains recorded information. The tape must not be write protected.

If you wish to remark an existing file, remember that the MF command places an EVD mark after marking the last file. The EVD mark makes any data following the EVD mark inaccessible.

For example, if you had this structure on tape:



and remarked File 2, the new structure would be



with the contents of Files 3 through n being lost

Since there is a limited area of tape available for recording information, there are finite limits to tape capacity. The tape capacity is function of record length and the number of files marked. Figure 5-1 shows the relationship of these parameters.

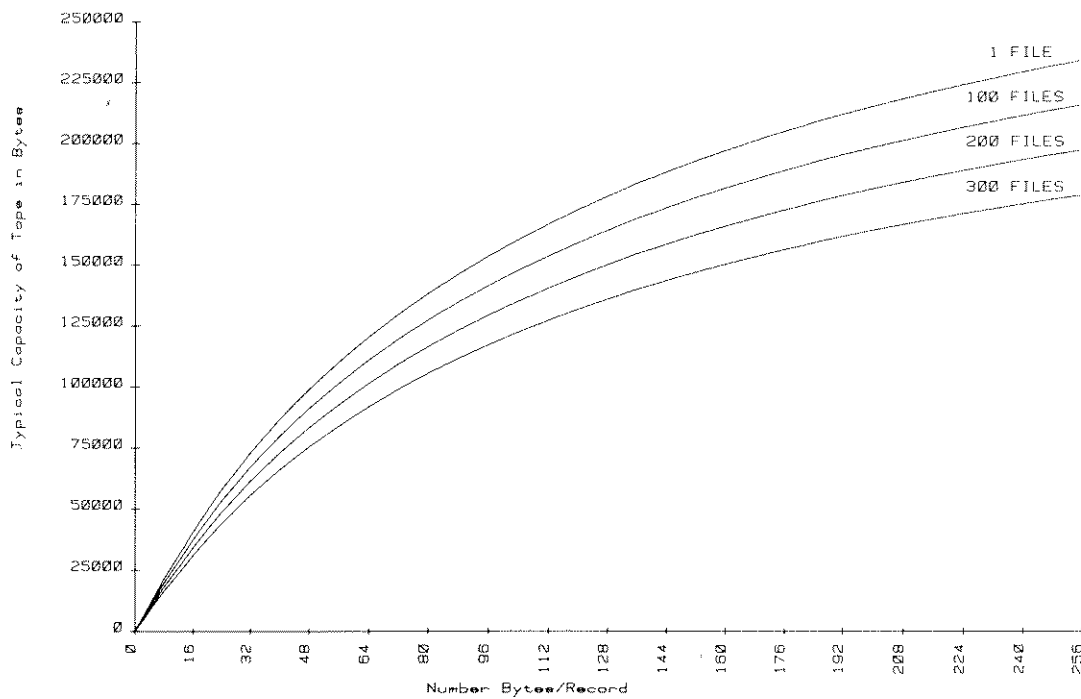


Figure 5-1: File Size Interaction

The number of files to be marked determines how many new files you have available for storage.

The number of records per file determines how many records each new file has available for storing data.

The number of bytes per record determines the amount of storage space available per record. Not using this parameter sets the record length to its maximum (256 bytes). The number of records per file multiplied by the number of bytes per record determines the number of bytes per file. The CTU makes the number of bytes per record even by rounding up odd numbers. For example, specifying 11 bytes per record reserves 12 bytes in a record.

The number of bytes per identifier record (record 0) reserves space for the file identifier record. The file identifier can be used for recording remarks about a file or naming the file for use in directory access. The values for this parameter are from zero to 256 bytes. If you do not specify a value, or if you specify 0, space is not reserved for the file identifier record body.

The free field pattern is a four-bit binary code (0 to 15). If you do not specify a value, 0 is recorded in the free field. You may find the free field pattern useful for recording a four-bit code (such as the date or test run) to further help identify your data.

(CTU-L) ‘MF 15, 25, 100, 256, 8’ (EOC)

This example marks 15 files having twenty-five, 100-byte records. The file identifier record (record 0) has 256 bytes reserved for remarks and the free field pattern is 8 (binary 1000).

You may wish to mark a file mark by executing MF 1, 0. This allows you to incrementally add records by using the MR command.

Mark Record

‘MR [P1][, P2]’

Command Type: Immediate Execution

Parameters: P1 number of records to be marked (optional)

P2 contents of the free field (optional)

Parameter Limits: P1 minimum 1, maximum 4095, default 1

P2 minimum 0, maximum 15, default 0

The Mark Record (MR) command is similar to the MF command except that you are reserving record space on an existing file. The tape must be positioned at either a BOF or the EVD mark prior to executing the MR command. The record(s) to be marked is the current file. If the tape is positioned at the EVD, the data is added to the end of the last file.

When the tape is positioned at a BOF, the record length is set at 256 bytes per record. When positioned at the EVD mark, the record length is the same as the rest of the records in the file.

The number of records parameter specifies the number of records which are going to be recorded. The free field parameter allows you to mark the free field as in the MF command.

The MR command requires the tape to be positioned at either the EVD mark or at a BOF position.

(CTU-L) "MR 200" (EOC)

This example shows how 200 records are added to a file.

The MR command records an EVD mark at the end of the last record added. As with the MF command, any data which exists after the EVD mark is inaccessible.

Output Error

"OE"

Command Type: Parameter Output

The Output Error (OE) command performs two actions. First, it returns five parameters from the CTU. These parameters have the same format as shown in Table 6 page 31. The parameters are a coded representation of the error condition(s) and test results present in the CTU.

Secondly, the OE command clears the error(s) from the CTU, allowing the CTU to respond normally to all subsequent commands. (Bit 5 in the status byte is set to 0.)

The OE values (parameters 1 and 2) are cumulative. The test results (parameters 3, 4 and 5) are the results of the last self test.

Table 12: Output Error Parameters

Error Code #1 (First Parameter Returned)

0. No error or test passed
1. Cartridge out or file not found.
2. Cartridge is write protected or record not found.
4. Drive not present or internal temperature is too high.
8. Verify failed or unknown/illegal tape position.
16. File/record overflow or attempt to read an empty file/record.
32. Body checksum error or attempt to store, write or mark a non-updateable record.
64. Header checksum error or end of tape.
128. Servo or hardware failure.

Error Code #2 (Second Parameter Returned)

- 0. No error.
- 1. Unexpected byte received.
- 2. Unexpected byte requested.
- 4. Illegal character in parameter list.
- 8. Mandatory parameter is not specified.
- 16. Too many parameters specified.
- 32. Parameter is out of limits.
- 64. Syntax error.

Electronics Test Result (Third Parameter Returned)

0	Electronics Test Passed
Non-0 value	Electronics Test Failed

Drive 0 Test Result (Fourth Parameter Returned)

Test result values are the same as Error Code #1

Drive 1 Test Result (Fifth Parameter Returned)

Test result values are the same as Error Code #1

(CTU-L) "OE" (EOC)
 (CTU-T) parameter list (CR-LF)

Output Status

"OS"

Command Type: Parameter Output

The Output Status (OS) command allows the controller to check the state of seven internal conditions of the CTU. The CTU returns the status byte value as the parameter. The parameter format is the same as the other parameter output commands. The format is shown in Table 6, page 31.

This status byte is also returned as the response to a serial poll.

The status byte value is cumulative. For example, if drive #1 is selected and an error occurs, the value is 160.

The decimal equivalent values for the parameter are:

	Status byte
1. data buffer empty	bit 0
2. data buffer full	bit 1
4. ready for next instruction	bit 2
8. initialized (set only after power on or device clear) ¹ .	bit 3
16. not used (always 0)	bit 4
32. error	bit 5
64. require service (SRQ)	bit 6
128. drive #1 selected	bit 7

¹ This condition can be used to detect a momentary interruption of power to the CTU.

(CTU-L) "OS" (EOC)
 (CTU-T) parameter (CR-LF)

When the CTU receives the OS command, the CTU can resume operation. This allows you to clear the CTU of an error so the CTU can operate without sending a device clear which resets the CTU. The error code is not returned until an OE command is executed.

Read File

"RF [P1]"

Command Type: Data Output
 Parameter: P1 file number (optional)
 Parameter Limits: minimum 1, maximum 2047, default current file number

The Read File (RF) command allows you to read information which has been stored or written in a file. You may optionally specify the file number from which the information is read. If you do not specify a file number, the data is read from the file which is currently available. At rewind and end of valid data, the current file is not defined.

(CTU-L) "RF 4" (EOC)
 (CTU-T) data list (EOD)

In this example, the contents of file 4 are ready to be output by the CTU. The tape is positioned at the next BOF after executing a RF command.

Read File Identifier

“RI [P1]”

Command Type: Data Output

Parameter: P1 file number (optional)

Parameter Limits: minimum 1, maximum 2047, default current file I.D.

The Read File Identifier (RI) command reads the contents of the file identifier record (record 0).

(CTU-L) “RI4” (EOC)

(CTU-T) data list (EOD)

In this example the contents of the file identifier record for file #4 is being read. The tape is positioned at BOR 1 after executing this command.

Read Record

“RR [P1]”

Command Type: Data Output

Parameter: P1 record number (optional)

Parameter Limits: minimum 0, maximum 4095, default current record number.

The Read Record (RR) command allows you to read information from an existing record. The tape must be positioned in the file which contains the desired record prior to executing the RR instruction. If the record number is not specified, the information is read from the record which is currently available.

(CTU-L) “RR 3” (EOC)

(CTU-T) data list (EOD)

This example reads the information which is stored in record 3 of the current file. The CTU is ready to output a data list.

After a RR command, the tape is positioned at the next BOR.

If you continue executing RR commands through a file until you encounter record 0 of the next file, a file overflow error (error code 1, value of 16) results.

If the BOR position is at the EVD mark or the beginning of the next file and the next command does not specify an optional parameter, a file overflow error results.

Rewind

“RW”

Command Type: Immediate Execution

The Rewind (RW) command rewinds the tape cartridge. After an RW command, the current file number is not defined.

(CTU-L) “RW” (EOC)

This example causes the CTU to rewind the tape cartridge.

Select Drive

“SD [P1]”

Command Type: Immediate Execution

Parameter: P1 specified drive number (optional)

Parameter Limits: minimum 0, maximum 1, default 0

The Select Drive (SD) command allows the selection of either drive on any CTU that is equipped with Option 001, multiple tape drives. Once a drive is selected, all subsequent commands apply to that drive. The currently selected drive is indicated by the illuminated front panel lamp.

The SD instruction remains in effect until another SD instruction is executed or the CTU is cleared by either “Device Clear” message or a power off/power on cycle. When the SD command is executed, the old transport retains its current tape position while the newly selected transport verifies the position of the tape.

(CTU-L) “SD 1” (EOC)

This example selects tape drive #1.

Attempting to select drive 1 on a CTU which has only drive 0 results in a transport not present error (error code 1, value of 4).

Store File

“SF [P1]”

Command Type: Data Input

Parameter: P1 file number (optional)

Parameter Limits: minimum 1, maximum 2047, default current file number

The Store File (SF) command allows you to store data into an existing reserved file. You may optionally specify the file number which is going to have the data stored in it. If you do not specify a parameter for the file number, the data is stored in the file which is currently available.

After execution of the SF command, the CTU is in the data input mode. The CTU is ready to input and store a data list. The tape is positioned at the next BOF after receiving the data list.

(CTU-L) “SF 3” (EOC)

(CTU-L) data list (EOD)

This example stores a data list in file 3.

Store File Identifier

“SI [P1]”

Command Type: Data Input

Parameter: P1 file number (optional)

Parameter Limits: minimum 0, maximum 2047, default 0 (current file)

The Store File Identifier (SI) command stores information into a specified file at record #0. The file identifier can be used for recording remarks about a file or naming the file.

Before storing a data list into the file identifier record, space in the file identifier record must be created. This is done by using the MF command, and P4 in the parameter list. Refer to page 41 for further information.

(CTU-L) “SI 4” (EOC)

(CTU-L) data list (EOD)

After the execution of this SI command the CTU is ready to input a data list and store it into record 0 of file number 4. The tape is positioned at BOF 4 after receiving the data list.

Store Record

“SR [P1]”

Command Type: Data Input

Parameter: P1 record number (optional)

Parameter Limits: minimum 0, maximum 4095, default 0-(current record) *number*

The Store Record (SR) command allows you to store information into an existing record. The tape must be positioned at the file which the information is to be stored in prior to executing the SR instruction. If you do not specify a record number, the information is stored in the record which is currently available.

(CTU-L) “SR 3” (EOC)

(CTU-L) data list (EOD)

After the execution of the SR command, the CTU is ready to input and store a data list into the specified record.

After the data list has been stored, the tape is positioned at the BOR for the next record. If this position is at the EVD mark or the beginning of the next file and the next command applies to the current record, a file overflow error results.

Self Test

“ST”

Command Type: Immediate Execution

The Self Test command is used to verify that the CTU is operational. The self test tests the electronics and the read/write circuitry for each drive. The self test is implemented and the results are obtained by using the two instructions – Self Test (ST) and Output Error (OE).

(CTU-L) “ST” (EOC)

The self test procedure records data on the tapes which are installed in the drives, to test the drive read/write circuitry. This test records data over any existing data on the tape. Therefore you should verify that the tape cartridge which is being used in the self test does not contain any valuable data.

A common error which can occur during the self test is that the cartridge is write protected, or is not being installed in the CTU while the CTU is performing the self test. If either of these two conditions exist, correct them before executing the ST command.

Another source of self test failure is a defective tape. Re-running the test with a new tape may be all that is required to verify the operation of the CTU.

If the indicator lamp is flashing after the self test, contact your nearest HP Sales and Service Office.

Time Interval

`'TI [P1]'`

Command Type: Immediate Execution

Parameter: P1 time interval in seconds (optional)

Parameter Limits: minimum 0, maximum 65,535, default 0 (no delay)

The Time Interval (TI) command is used to allow the CTU to set a time interval between inputting or outputting data. This command is very useful for pacing the interface when the CTU is being used as a data logger.

The parameter is any integer value between zero and 65,535. This results in a time interval delay which ranges from no delay to 18 hours 12 minutes 15 seconds.

The operating cycle of this command causes the CTU to input (or output) data until a linefeed is received (or sent). When the linefeed is received (or sent), the CTU stops inputting (or outputting) data and initiates its time interval delay. After waiting the specified amount of time, the CTU repeats its operating cycle.

(CTU-L) `'TI 15'` (EOC)

This example allows the CTU to input or output data at 15 second intervals.

Write File

`'WF'`

Command Type: Data Input

The Write File (WF) command writes a new file and stores data on the tape cartridge with the same command. While this instruction is similar to executing an MF command followed by a SF command, there are certain trade-offs.

The MF command allows you to create more than one file at a time; the WF command allows you to create only one file per WF command.

The WF command actually stores data, while the MF command does not.

Both the WF and MF commands can write over previously recorded data.

The time it takes to execute a WF command is significantly less than the time it takes to execute a SF command.

Information which is recorded in files that were created by the MF and WF commands are updateable.

The MF command allows you to select how many records per file are to be recorded; the WF command uses as many records as are needed to contain the data.

The MF command allows you to select how many bytes are to be recorded in each record. The WF command uses 256-byte records.

The WF command places an EVD mark on the tape at the end of the file. Any data which is on the tape that occupies space beyond the area where the WF command is executed cannot be accessed after the WF command is executed. Because of this, the WF command should only be executed after verifying that the WF command is not going to make any data inaccessible. This keeps the WF command from destroying previously recorded data.

The WF command writes a file identifier record with a record length of 0. After RW or FE its file number is the last file number prior to the WF file +1. For example, if the file number prior to the WF file is 15, then the file number of the WF is 16 (15+1). At a BOF, its file number is the current file number.

- (CTU-L) "WF" (EOC)
- (CTR-L) data list (EOD)

After the execution of the WF command, the CTU is ready to input and store a data list.

It is possible to create a file mark by sending a WF command followed by the EOD character as the first character in the data list. This enables you to incrementally write a file using the WR command.

Write Record

“WR”

Command Type: Data Input

The Write Record (WR) command is the record level counterpart of the WF command. The WR command stores and appends information onto an existing file.

As with the WF instruction, executing a WR command is faster than executing a MF command followed by a SR command. The record length is the same as the other records in the file.

The WR command may only be executed if the tape is positioned at the EVD or a BOF position. Any other position results in an illegal position error. When the tape is positioned at the EVD, the record length is equal to the preceding record's absolute length. When the tape is positioned at a BOF, the record length is fixed at 256 bytes per record.

(CTU-L) “WR” (EOC)
 (CTU-L) data list (EOD)

After executing the WR command the CTU is ready to input and store a data list.

If the data list is greater than the record length, a record overflow error occurs.

As with the WF command, the WR command places an EVD mark on the tape after writing the record. Any data which exists on the tape after the EVD mark is no longer accessible by the CTU.

Chapter 6

Operation

While it is not possible to give example programs which show the Cartridge Tape Unit (CTU) being used with all controllers, general purpose flowcharts are included in this section to enable you to use the CTU.

If you have an HP computer or computing controller, Programming Techniques manuals have been written for your device. Refer to Table 13 for the appropriate part number.

Table 13: Programming Techniques Manuals

Controller	Part Number
9815A	98130-90011
9825A	09825-90075
9831A	09831-90075
System 45	09845-90675

Theory of Operation

The CTU is a device which responds to commands and inputs and outputs data lists.

If the command is not terminated with an End of Command character (EOC), the CTU does not execute the command.

The acceptable terminators for the commands are:

1. ASCII Semi-colon (decimal 59)

or

2. ASCII linefeed (decimal 10)

or

3. EOI sent with the last byte.

Input data lists must be terminated with the End of Data List character (EOD), or an error can be generated in the CTU. (Error code 2, value of 2, unexepected byte requested.)

NOTE

If an input data list is not terminated with an EOD character, all subsequent commands to the CTU are stored as part of the data list.

The acceptable terminators for the data lists are:

1. ASCII linefeed (decimal 10) unless changed by the ED command.
2. EOI sent with the last byte.

An EOD which is sent to the CTU is not recorded on the tape.

An EOD is added to the end of a output data list by the CTU. This EOD must be read by the device receiving the data list, or an error may result. (Error code 2, value of 1, unexpected byte received.)

When an error is generated the CTU responds to only two commands, OS and OE. All other commands are ignored. For this reason, it is necessary to frequently check the CTU for error conditions. The CTU responds to a serial poll at any time, making this a convenient method of checking for error conditions.

An OS command returns the values shown in Appendix F.

If an error has occurred, the CTU must receive an OE command so you may determine what kind of an error occurred. However, after receiving the OS command the CTU is ready to resume operation. If you resume operation, the error values remain in the CTU's error code registers until either an OE command is received, a device clear is received, or until power is removed from the CTU.

The OE command returns the error codes shown in Appendix F. The OE command resets the CTU's error code values to 0. At this point, you can determine whether you want to re-run the program or continue depending upon the seriousness of the error.

Initialized Condition

The following initialized conditions apply to the CTU whenever power is applied or the CTU receives a device clear through the interface.

Autoverify Mode	Disabled
End of Command Character	ASCII LF or ASCII Semicolon
End of Data List terminator	ASCII LF
Drive Selected	Tape drive 0
Time Interval	Off

If you have changed any of these conditions during the execution of a program, they reset to the states shown above.

Polling

The CTU responds to both serial and parallel polling.

Serial Poll

The CTU responds to a serial poll with the values shown in Appendix F.

Parallel Poll

If the CTU is set to an address between 0 and 7, the CTU is automatically configured to respond affirmatively to a parallel poll as shown in Table 14. If the CTU's address is 8 or above, the CTU must be configured by an IEEE parallel poll configure message.

Table 14: Parallel Poll Response

CTU Address	Parallel Poll Response Line
0	DIO 8
1	DIO 7
2	DIO 6
3	DIO 5
4	DIO 4
5	DIO 3
6	DIO 2
7	DIO 1
8 or above	Not responding unless configured

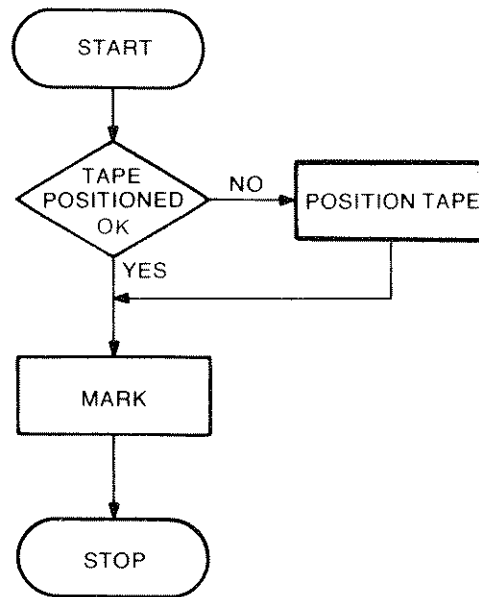
The CTU can respond affirmatively to a parallel poll if the IM command parameter P2 is a non zero value and the enabled condition is true.

Normal Operation

To store data, you have two choices of operation.

1. Mark files on the tape and then store data into the premarked files.
2. Store data into non-premarked files.

Marking Files

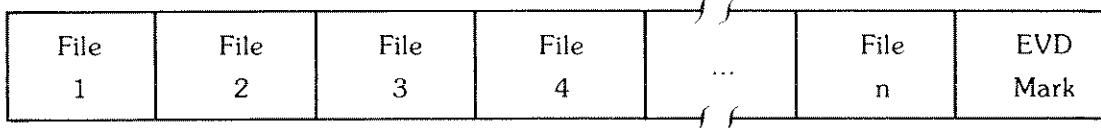


The tape should be positioned by:

1. Executing a RW command to mark at the beginning of a tape.
2. Executing a FE command to preserve data recorded on a tape.

Marking files or records results in an EVD mark being placed on the tape after the command is executed. This means if you remark a file located between files (tape is positioned with an FF command), all remaining files are inaccessible.

For example, if you had this structure on tape.



and remarked File 2, the new structure would be

File 1	File 2	EVD
-----------	-----------	-----

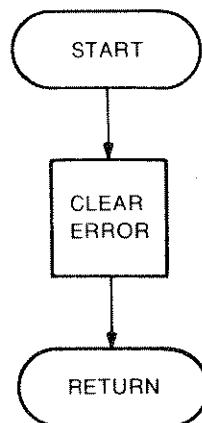
with the contents of Files 3 through n being lost

If an error occurs (front panel lamp is flashing), data input and output stops. The CTU responds only to an OE or OS command.

Errors can be detected by interrupt service routines, or by periodic polling of the CTU.

If your controller does not handle interrupts, then you may have to perform polling your bus frequently through a program, to determine when an error occurs.

Handling Errors



Errors are cleared by any of these three commands:

1. OS
2. OE
3. Device Clear

The OS command allows the CTU to return to normal operation. The error codes are not returned from the CTU. The error code values remain in the CTU.

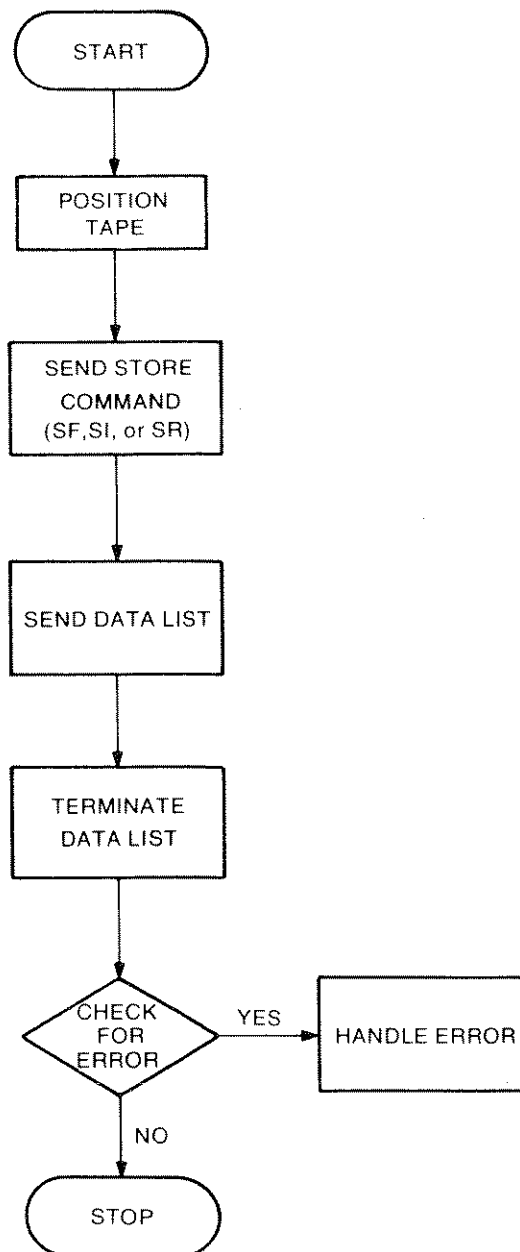
Executing an OS or OE while the CTU is expecting to input or output a data list generates either an error condition or erroneous data being recorded on the tape.

The OE command allows the CTU to return to normal operation. The error codes are returned from the CTU. The OE command is the only command which returns the error code values.

A device clear allows the CTU to return to normal operation. All device selectable characteristics are set to power-on conditions. (Refer to page 57). It may be necessary to reconfigure the CTU after a device clear.

Storing Data

Premarked Files

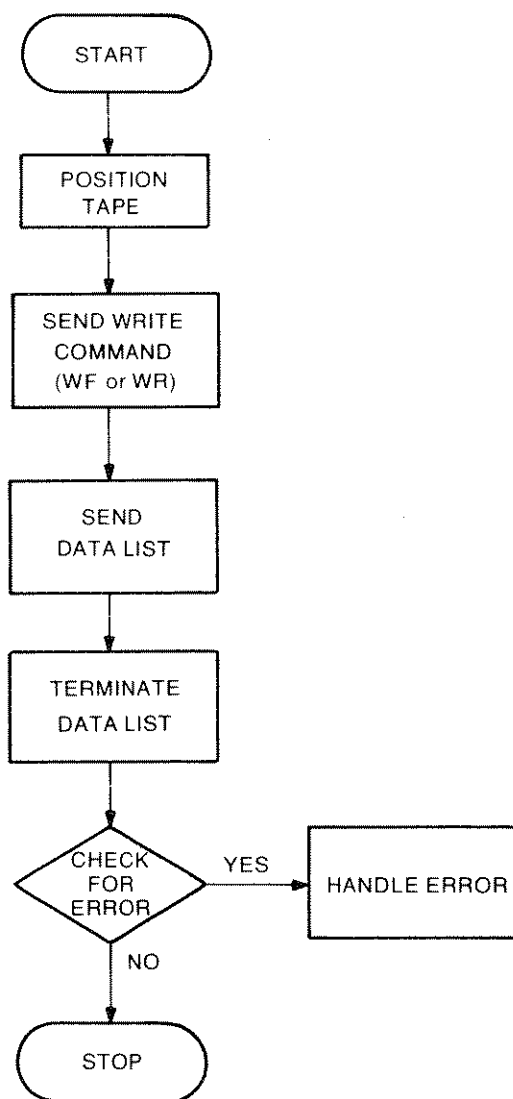


Commands which specify a file number execute an implied FF command to position the tape. These commands include IF, RF, RI, SF and SI.

The store command may be either SF or SR or SI as needed. The data list must be terminated with the EOD character, exceeding a specified byte count, or by the EOI message.

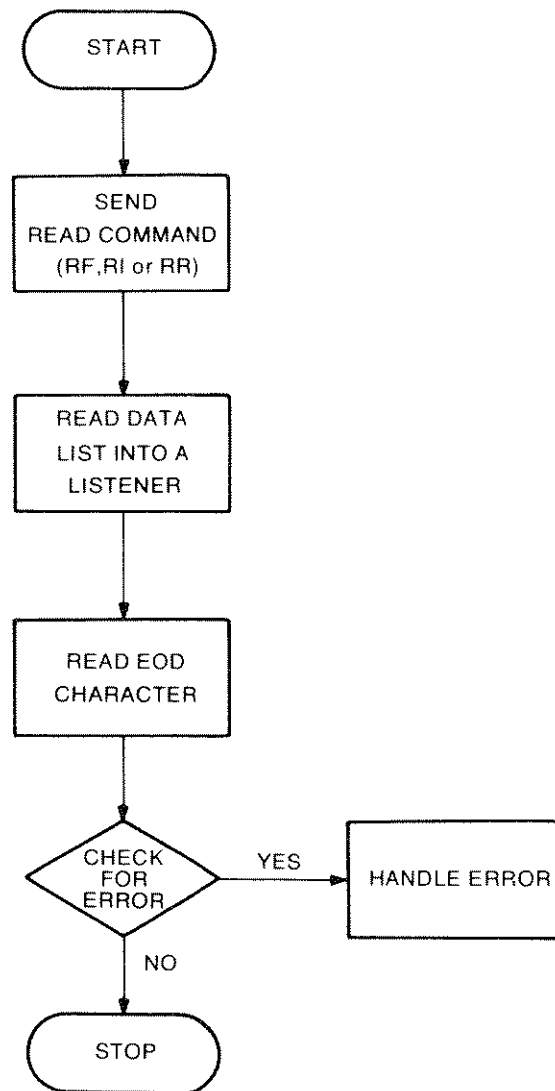
The files and records must have been previously reserved by an MF or MR instruction.

Non Premarked Files



The legal tape positions for the WF command are after a RW command, after an FE command or at a BOF. The legal tape positions for the WR command are after an FE command or at a BOF.

Reading Data



Error Interrupt Routine

An error in the CTU can cause a loss of data. Since this is undesirable, you may want to configure your system to handle the error in this fashion.

1. Set the controller to handle an error (OE command) on an interface interrupt. (SRQ is very convenient for this.)
2. Enable the interface to interrupt the controller on SRQ from the CTU.
3. Enable the CTU to interrupt on error by using the IM command.

Input/Output of Data

The CTU can be configured to interrupt when its buffer is empty or full, allowing data to be sent in and out in blocks at the higher burst transfer rate. The buffer length is equal to the absolute record length for input and the used record size for output.

1. Set controller to input (output) data on an interface interrupt.
2. Enable interface to interrupt the controller on SRQ from the CTU.
3. Enable the CTU to interrupt on either
 1. Buffer empty
 - or 2. Buffer full
 by using the IM command.

Buffer Status Identifier

The Buffer Status Identifier can be used to determine the number of bytes available in the CTU's buffer. This command can be executed at any time, similar to a serial poll.

To get the buffer status identifier, the following procedure is used.

1. Address the CTU to talk.
2. Send the secondary command 1 in octal.

The CTU is now ready to return its available buffer length. This buffer length is an eight-bit byte. The value of this byte is between 0 and 255.

The CTU returns the logical length of the buffer when this byte is read by the controller/device. The maximum value of the logical length of the buffer is equal to the number of bytes per record for a given file.

If the CTU is in the data output mode, the buffer status identifier byte value is equal to the used size of the buffer.

If the CTU is in the data input mode, the buffer status identifier byte value is equal to the available size of the buffer.

Table 15 gives examples of the buffer status identifier.

Table 15: Buffer Status Identifier

Data Input 256 bytes per record (logical length)

Number Of Bytes In Buffer	Value Of Byte Returned	Status Byte
0	0*	1 (buffer empty)
56	200	0 (neither buffer empty nor buffer full)
255	1	0 (neither buffer empty nor buffer full)
256	0	2 (buffer full)

Data Output 256 bytes per record (logical length)

Number Of Bytes In Buffer	Value Of Byte Returned	Status Byte
0	0	1 (buffer empty)
56	56	0 (neither buffer empty nor buffer full)
255	255	0 (neither buffer empty nor buffer full)
256	0*	2 (buffer full)

Self-Identify Mode

The CTU is equipped with a self-identify mode for use in system with controllers that can send secondary commands.

The self-identify mode has two features:

1. The CTU is identified by its primary address.
2. The CTU is identified by a special 2 byte code.

Primary Address

The primary address is the CTU's address. The address must be set to 0 through 7 to make use of the self-identify mode. First, turn off power to the CTU. Then to enable the self-identify mode, switch on the self-identify switch located on the rear panel as shown in Figure 6-1.

*0 is returned here because the number 256 can not be represented in eight bits. The status byte condition indicates whether the buffer is empty or full.

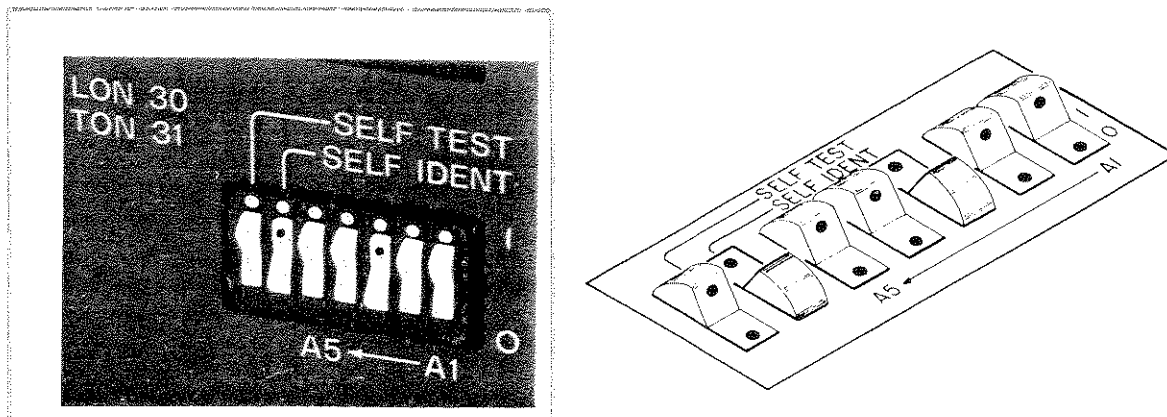


Figure 6-1: Self-Identify Switch

Next, enable power to the CTU. The CTU is now in the self-identify mode. In the self identify mode, whenever a power on or a device clear is received by the CTU, the CTU is automatically configured to respond affirmatively to a parallel poll. This response is the same as shown in Table 14. This response remains in effect as long as the initialized bit (bit 3) in the status byte is 1.

If the CTU's address is set to 8 or above, the CTU must be configured by a poll configure message to enable parallel poll response. This response to parallel poll is in addition to any parallel poll response mask which is set by the controller.

The self-identify mode remains in operation until the self-identify switch is set off and a device clear or power off occurs.

Device Identity Code

The CTU can identify itself by a code which is unique to the HP 9875A. The code is a two-digit value. Each digit is composed of an eight-bit byte. The CTU's device identity code is a value of 1 for the first byte and 2 for the second byte.

To read the device identity code, the following procedure is executed.

1. Address device 31 as a talker (bus untalk message).
2. Send the secondary command. This command is the octal value of 140 to 175, dependent upon the primary address of the CTU. The command is 01 1xx xxx with xx xxx equal to the primary address of the CTU.
3. The CTU returns the two byte identity code.
4. The controller must read the two bytes.
5. Address device 30 to talk (this unaddresses the CTU).

Device Specified Jump

The device specified jump (DSJ) is an action which returns a status byte from CTU. To execute a DSJ, the following procedure is used:

1. Address the CTU to talk at its primary address.
2. Send secondary command 16 in decimal.
3. The CTU returns the DSJ byte, as shown.

The DSJ clears the initialized bit (bit 3) in the status byte. This prohibits the CTU from its self-identify response to a parallel poll until the CTU has power reinitialized, or a device clear is received.

bit 0	bit 1	bit 2 thru bit 7
Ok if 0 Error if 1	initialized	not used

DSJ byte values

- 0 CTU is operational
- 1 Error condition in the CTU
- 2 CTU has been initialized

Listen Only/Talk Only Mode

The CTU is equipped with a Listen Only/Talk Only mode (LO/TO). This mode allows the CTU to either input or output data along the bus without the need for a controller. This can be very useful for data logging operations.

Listen Only

In the listen only mode, the CTU inputs a data list from a device which is outputting the data list (the talker).

To enable listen only mode, power should be turned off to the CTU.

After connecting the interface cable, set the address code switches to 30 as shown in Figure 6-2.

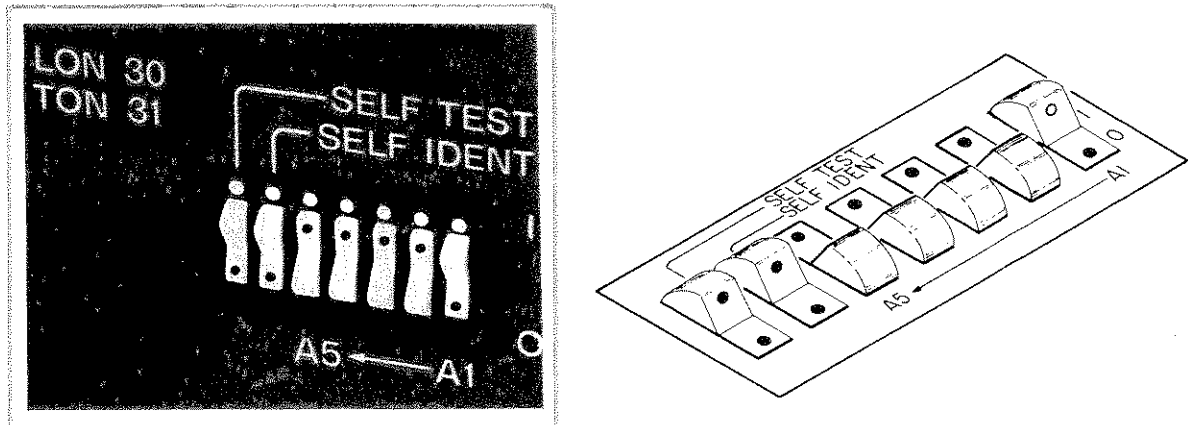


Figure 6-2: Listen Only Address Switch Setting

Next enable power to the CTU.

When a write enabled tape is inserted into drive 0 of the CTU the following sequence is executed:

1. The CTU executes a RW.
2. The CTU executes a WF command. The file number is 1. The CTU writes as many non-updateable records as needed to hold the data list.

The data list is recorded when:

1. 256 bytes of data are present in the CTU's buffer (buffer full).
- or
2. the contents of the CTU's buffer receives a linefeed (LF) character. This linefeed is recorded.

NOTE

The EOD character is not used in the listen only mode.

The LO data is not updateable. You can not store any different data into files written in the LO mode. This is done to achieve maximum data density on the tape. The used record length may be variable.

The CTU inputs data until the tape is full or power is switched off to the CTU. The CTU remains in the listen only mode until the address is changed from 30 and the power is turned off to the CTU.

NOTE

Make sure that the tape is stopped before power is switched off, or the last record of data may not be recorded.

Talk Only

In the talk only mode, the CTU outputs a data list to a device which is receiving the data list (a listener).

To enable the talk only mode, power should be turned off to the CTU.

After connecting the interface cable, set the address code switches to 31 as shown in Figure 6-3.

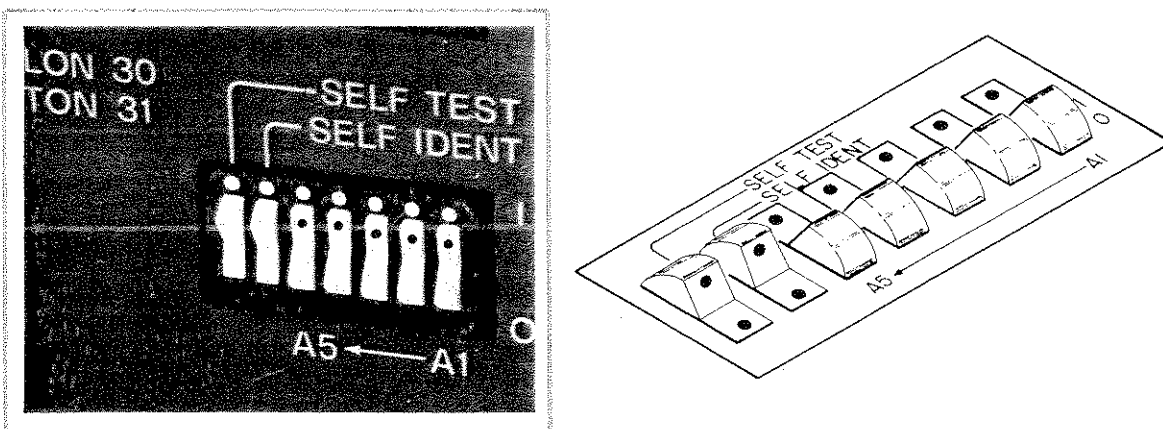


Figure 6-3: Talk Only Address Switch Setting

Next, enable power to the CTU. When a tape is inserted into drive 0, the CTU executes a RF 1.

The CTU outputs the data list until the file is completely read, or the address is changed from 31 and the power is turned off to the CTU.

Programmable LO/TO

There is an additional feature of the CTU when it is in either LO or TO modes and in the self identify mode.

When both of these conditions are met, the CTU performs the following sequence before entering its LO/TO procedure.

1. After power on, the CTU reads record 1 of file #1.
2. If the CTU encounters one complete, legal command (mnemonic, parameter field and EOC terminator) the CTU executes that one command.
3. The CTU then waits until another cartridge has been inserted into the selected drive (the drive above the illuminated front panel lamp) before executing the LO/TO sequence.

This results in four useful commands being available for LO/TO operations. The commands are:

1. Auto Verify – to check the recorded contents of the tape (LO mode only).
2. End of Data List – to change the EOD character, or enable the byte count.
3. Select Drive – to use drive #1 in LO/TO operations.
4. Time Interval – to pace the interface in LO/TO operations.

If the CTU encounters an illegal command in record 1 of file #1, an error condition is generated. The CTU must be cleared of the error by an OS, OE or device clear before the CTU can resume normal operations.

Tape Life

While typical tape life is expected to be between 50 and 100 hours (real operating time), the actual tape life will vary depending upon your work environment and the operation of your programs.

If during operation of programs, the Auto Verify mode begins detecting errors, the usable life of your tape is nearly up. It is recommended to keep a copy of all important tapes in case of tape failure.

Appendix A

Glossary

- BOF** The position reached when the tape is positioned at the Beginning of File (BOF).
- BOR** The position reached when the tape is positioned at the Beginning of Record (BOR).
- Cartridge** A magnetic tape medium. Specifically a tape cartridge with HP P/N 9162-0061.
- Checksum** A 16 bit word which is used for error detection. The value equals the arithmetic sum of the words before it. There are two checksums: Header Checksum and Body Checksum.
- Data Type** A code in bits 11, 12 of the File Word that indicates the type of data which is recorded.

Bit 12	Bit 11	
0	0	Empty (no data)
0	1	Not Empty
1	0	Not Empty
1	1	Not Empty

- Default** Value used when an optional parameter is not specified.
- End of Valid Data Mark** A mark on the tape consisting of the last record on the tape followed by an End of Track gap that signifies the end of data on the tape. This is the logical end of tape.
- File** A logical grouping of physical records which extends from its File Mark to the following File Mark or to the End of Valid Data Mark.
- File Identifier Record** The header of a file. It contains the file number, file size and checksum. (Usually Record #0).

File Mark	A mark on the tape consisting of the File Identifier Record and the Interfile Gap.
File Word	A 16 bit code that is found in the Record header. Bit 15 is the File Identifier Bit; bit 14 is 1; bit 13 is reserved; bits 11 and 12 are the Data Type Bits; bits 0 through 10 are the File Number.
Free Field	A four bit code which identifies a file that was recorded from a device with special characteristics.
Gap	A DC erased section of tape between physical records. SIF uses three types of gaps: the interfile gap, the interrecord gap and the end of track.
Header	The first several words of a physical record which identify that record. The two types of headers are: the File Identifier Record and the Record Header.
Interfile Gap	A gap from 63.5mm to 127mm in length (2.5 to 5 inches) that is between the File Identifier Record and the first record header.
Interrecord Gap	A gap of 25.4mm to 38.1mm (1 to 1.5 inches) that is between the records in a file.
Length Word	A 16 bit word in the Record Header. Bits 0 through 7 contain the number of bytes used; bits 8 through 15 contain the number of bytes available.
Marking	The process of dividing the tape into files, or of writing physical records on tape which are defined as empty before ever writing data in the records.
Non-updateable Record	A record on the cartridge whose contents cannot be changed.
Parameter	A parameter is a numeric value which modifies or delimits an instruction. Parameter can either be required or optional.
Physical Record	A block of contiguously recorded bits which extends from one gap to another. This includes the synchronization bits, header, record body, checksum, postamble and possible slack bits.
Postamble	An extra word which is written after the checksum to ensure that the checksum is readable.

Record Body	The portion of the physical record that contains the information to be exchanged. The record body consists of up to 128 sixteen bit words.
Record Word	A sixteen bit word consisting of bit 0 through 11 as the physical record number; bits 12 through 15 are the Free Field.
Slack	Extra words that are written at the end of a physical record to ensure that 128 words can be written in a record.
Synchronization Bits	A sequence of bits written at the beginning of each physical record to allow synchronization.
Track	A longitudinal area along the tape where a series of magnetic signals may be recorded.
Updateable Record	A record on tape whose contents can be changed by a SF, SR, WF, or WR command.
Word	A sequence of 16 adjacent bits.

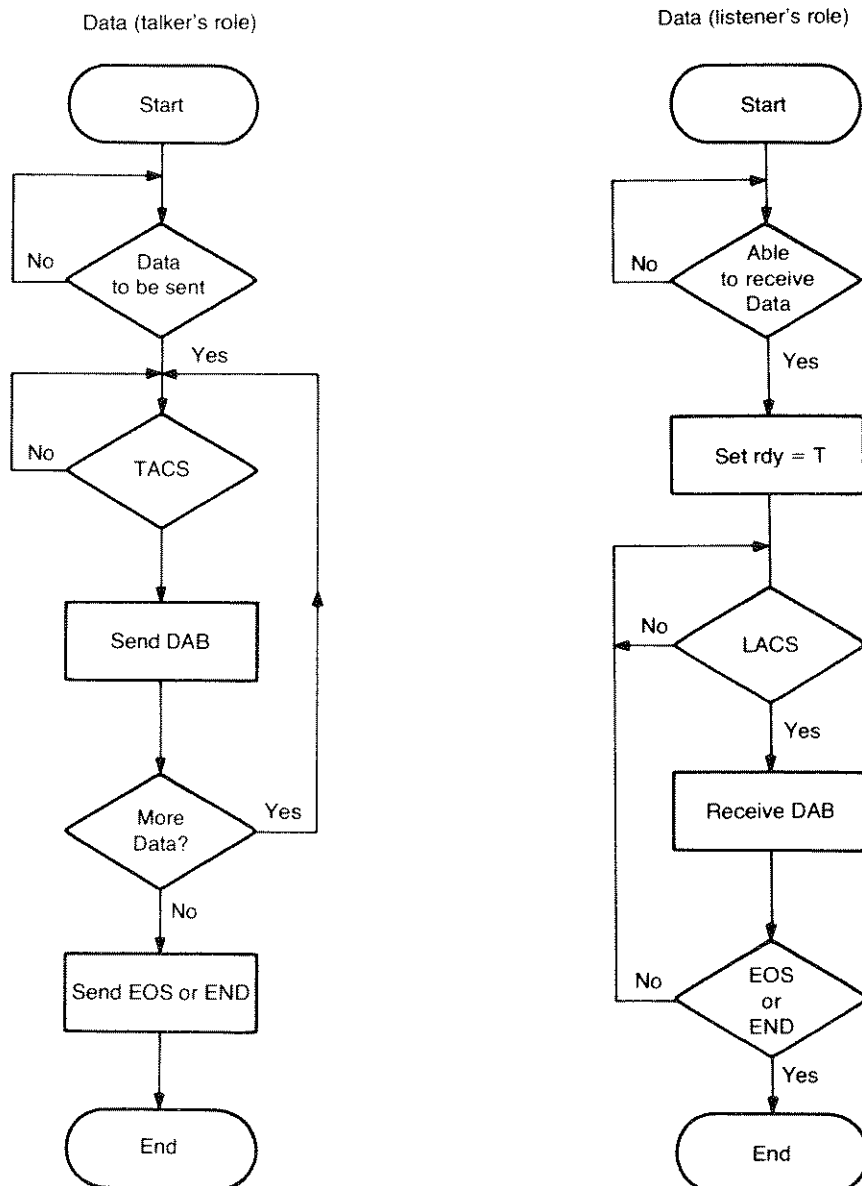
Appendix B

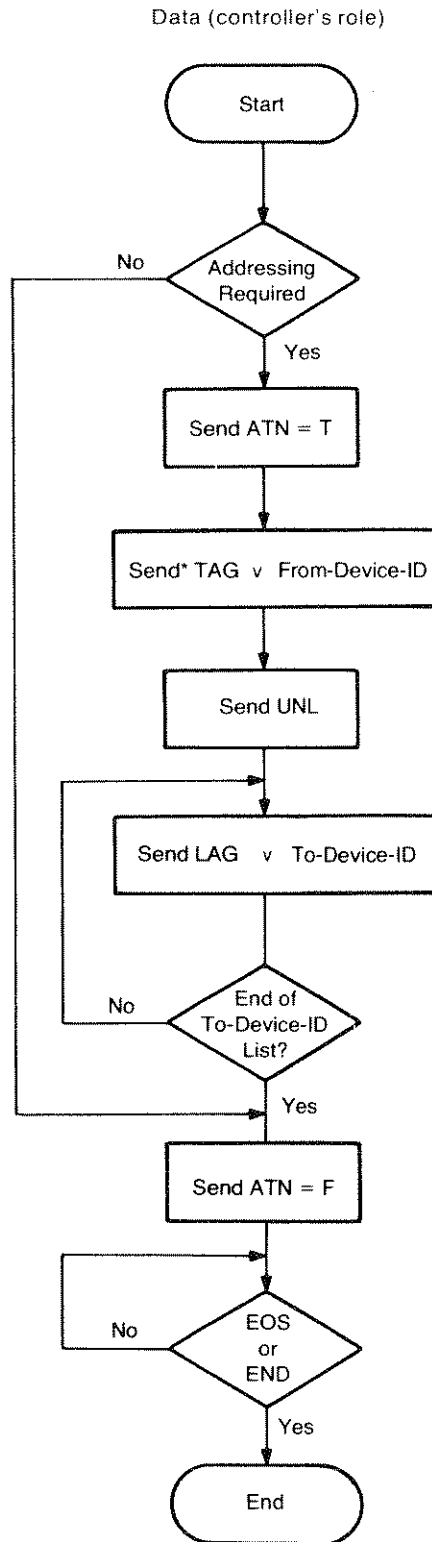
Bus Message Implementation

The flowcharts presented here portray a typical way to implement the bus micro-operations for each message the CTU implements.

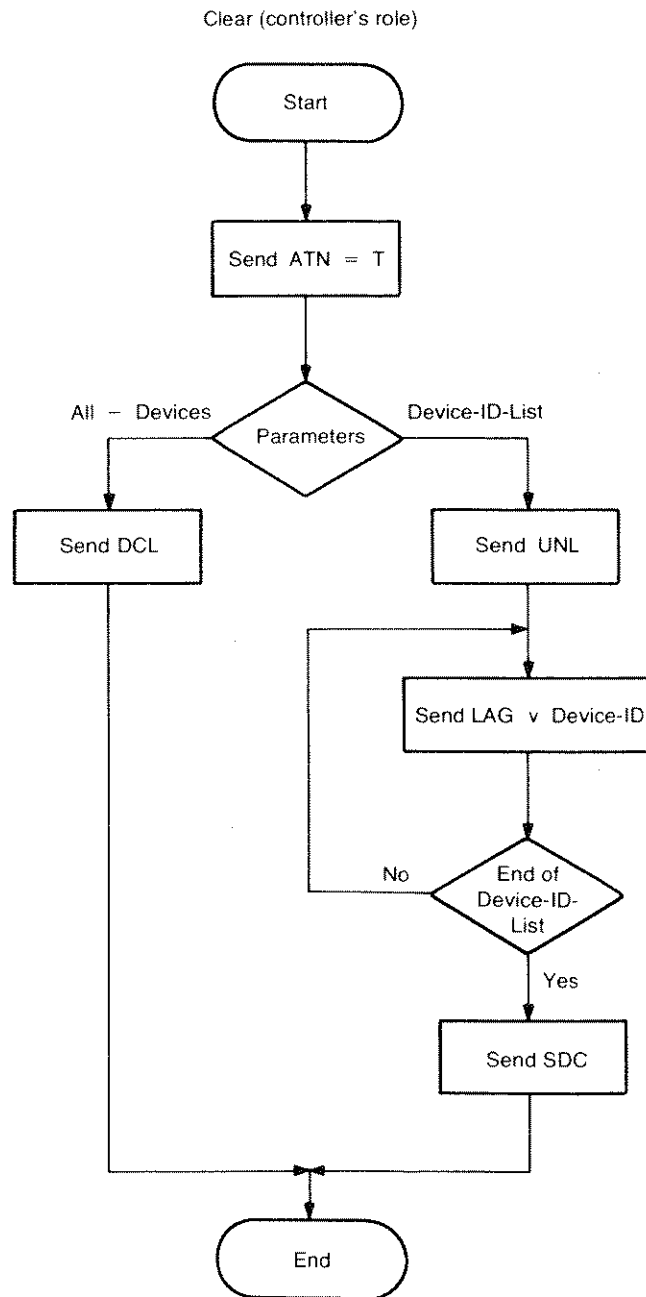
No single set of flow diagrams can represent exactly how the messages are to be transmitted since many options exist in terms of controller capabilities.

These micro-operations are referenced to the IEEE specification 488-1975.

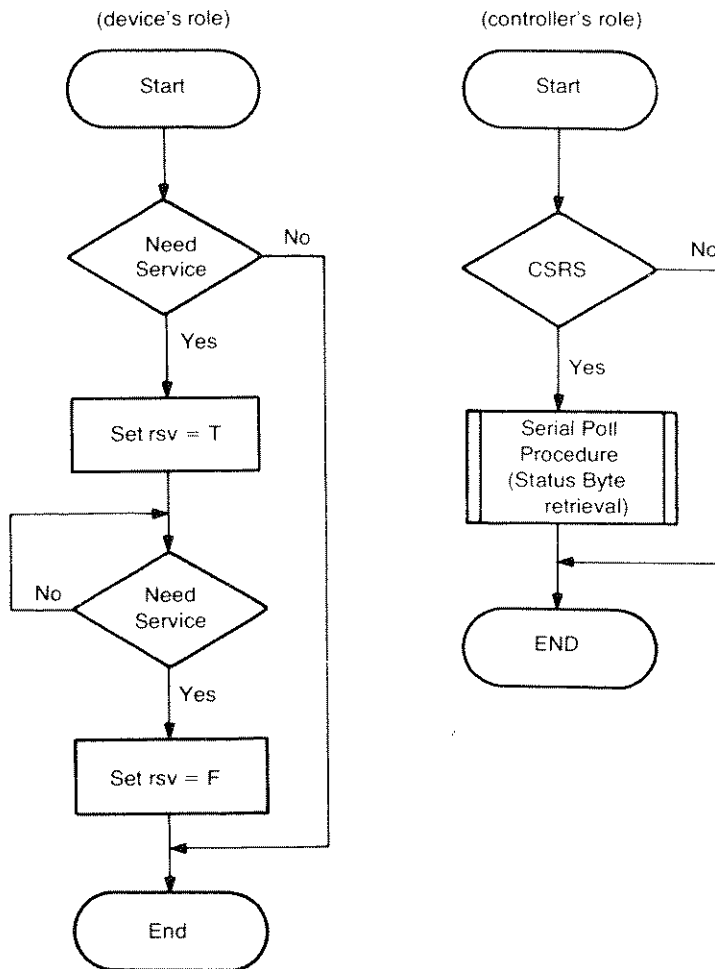


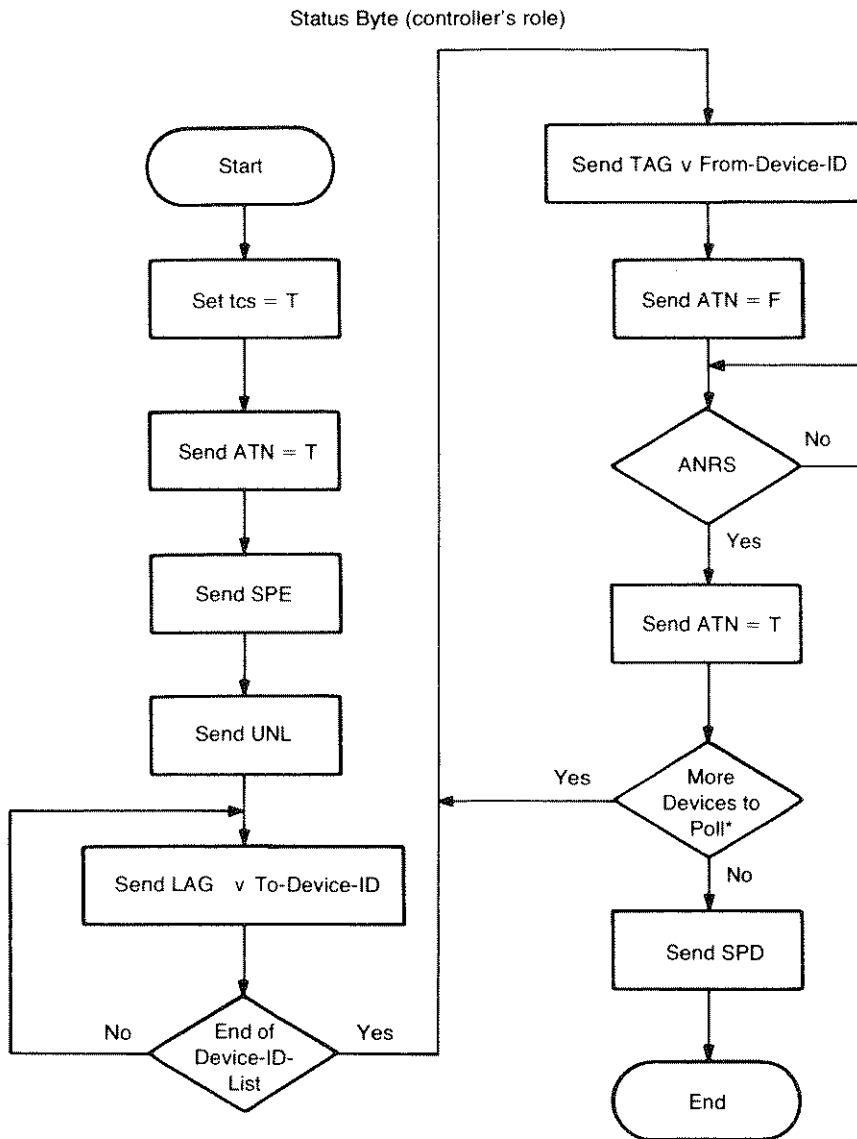


*Send implies an entire handshake sequence for multi-line messages

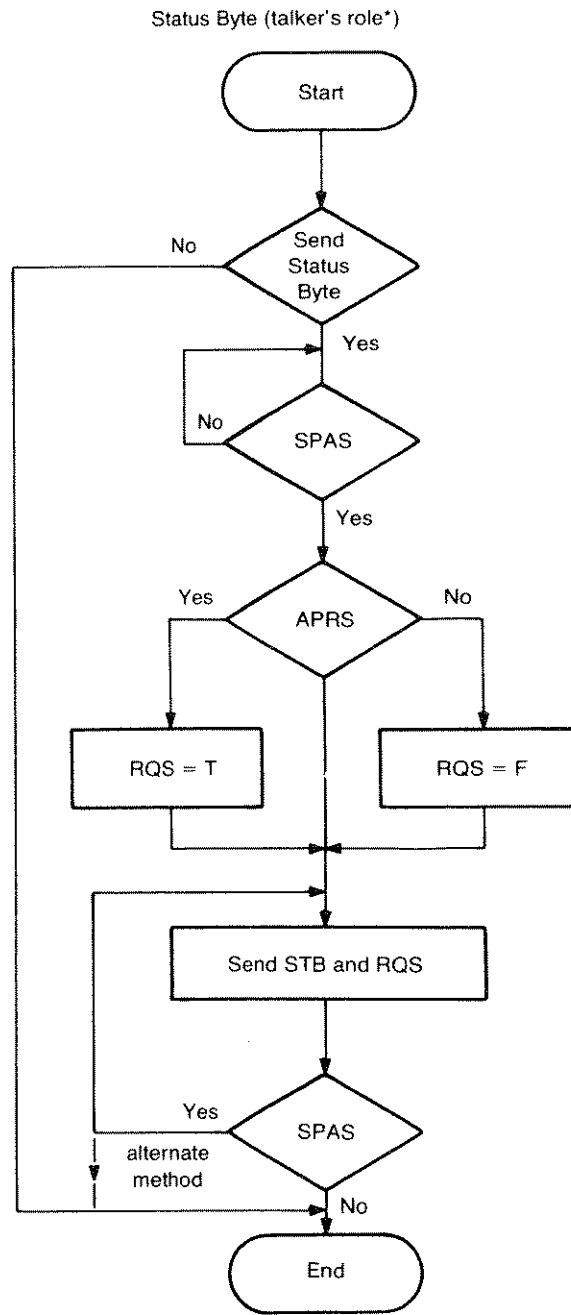


Require Service



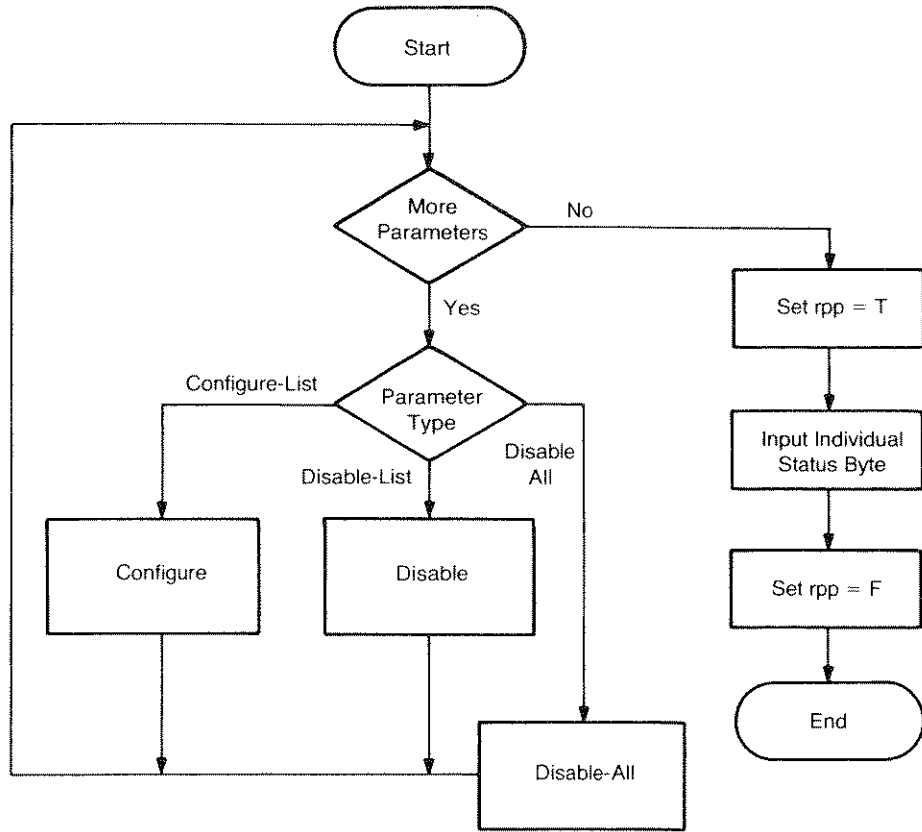


*Status Bytes are usually received during a serial poll.
 This algorithm represents a way to send Status Byte messages from a series of From-Device-ID's to a single To-Device-ID list.

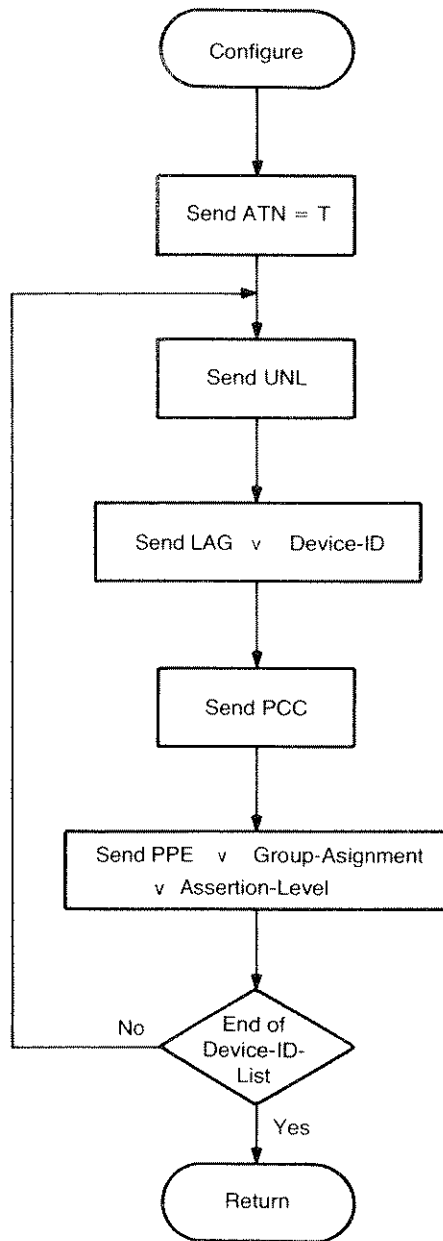


*Listener's role in Status Byte message is similar to listener's role in Data message.

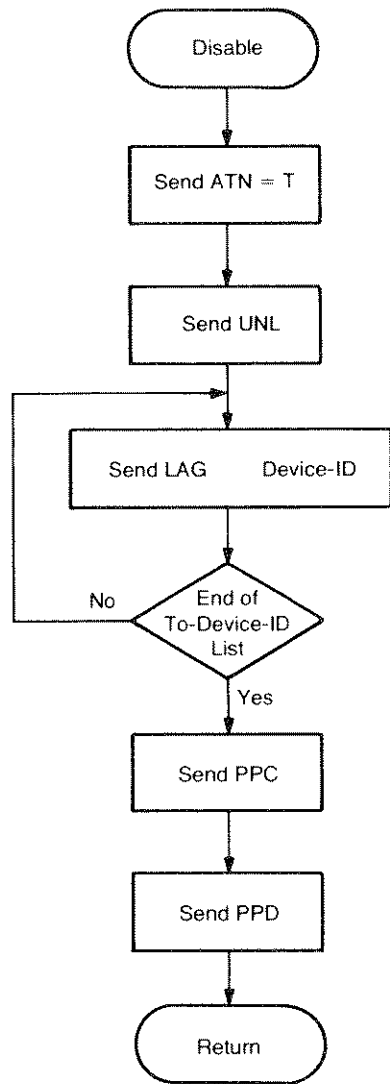
Status Bit (controller's role)



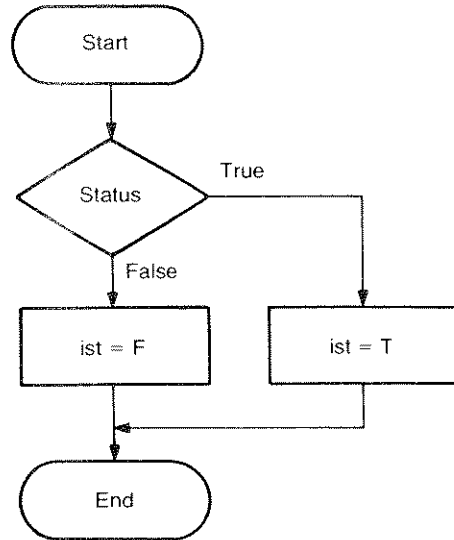
Status Bit (parameter setup)



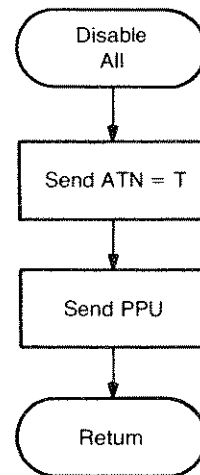
Status Bit Parameter Set Up
(controller's role)

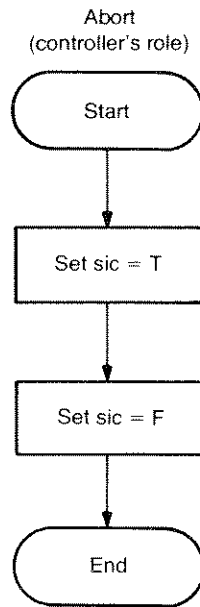


Status Bit (Device's role)



Disable-All (controller's role)





Appendix D

Index

Subject Index

- a**
- Abort 24,84
 - Absolute Length 30,39
 - Active Controllers 22
 - Address Code 8,10,11,57
 - Address, Primary 64
 - Addressing 21
 - Affirmative Parallel Poll Response 40,57
 - Automatic Verify 34,57,69
 - AV 32,34,57,69
- b**
- Beginning of File (BOF) 27,41,43,
46,49,52,53,71
 - Beginning of Record (BOR) 27,38,
47,50,71
 - Buffer Status Identifier 63,64
 - Bus Concepts 22
 - Bus Protocol 24
 - Byte 21
 - Count 34,36,37,61
 - DSJ 66
 - Status 23,24,45,66,79,80
 - Bytes per Record 38,41,42,43,53
- c**
- Care, Tape 15
 - Cartridge
 - Insertion 14
 - Removal 14
 - Tape 1,13,15,16,69,71
 - Checksum 30,71
 - Cleaning, Tape Head 14,15
 - Clear Lockout and Set Local Message 23,24
 - Clear Message 23,24,77
 - Clearing an Error Indication 44,
46,56,59
 - Clearing Errors 44,46,56,59
 - Code, Device Identity 65
 - Codes
 - Address 8,10,11,57
 - Select 8,10,11,57
 - Command
 - Set 31,32
 - Syntax 32
 - Command, Example 33
 - Commands
 - Data Input 31,32,49,50,51,53
 - Data Output 31,32,46,47
 - Form 24,25
 - Immediate Execution 31,32,
34,37,40,41,43,48,50,51
 - Parameter Output 31,32,38,
39,44,45
 - Concepts
 - Interface Bus 22
 - Message 23
 - Conditioning the Tape 16
 - Connection, Interface 10
 - Continuous Output Specifier 36,37
 - Controllers
 - Active 22
 - System 22
 - Cords, Power 6,7
 - Current File 37,46,47,48,52

- Data
- Input Commands **31,32,49,**
50,51,53
 - Input/Output 1,51,59,**63**
 - List 34,46,47,49,53,**56**
 - Logging 1,51,**66**
 - Message **23,24,75,76**
 - Input Commands 31,32,49,50,
51,53
 - Output Commands **31,32,46,47**
 - Default **71**
 - Delay, Time **51,67,69**
 - Device
 - Clear 46,48,59,**60,69**
 - Dependent Action **21**
 - Identity Code **65**
 - Specified Jump (DSJ) **66**
 - Drive
 - 0 Test Results **45**
 - 1 Test Results **45**
 - Selection **48,57,69**
 - DSJ Byte **66**
- ED 32,33,**34,35,**
36,56,57,67,69
- Electronics Test Result **45**
- Empty Record Indicator **29**
- End of
- Data List 33,**34,35,36,**
56,57,67,69
 - Tape (Logical) **30**
 - Valid Data Mark (EVD) ... **30,37,41,43,**
44,46,47,50,52,53,58,59,71
- EOD Character 33,**34,35,36,37,53,**
56,57,67,69
- EOI Message 34,36,55,**61**
- Equipment Supplied **5**
- Error
- Code 1 **44**
 - Code 2 **45**
 - Indication 14,18,19,
47,48,51,56,59
 - Interrupt Routine **62**
- Errors
- Clearing 44,46,56,59
 - Handling 44,46,56,59
- FE 32,**37,38,41,50,58,61**
- FF 25,32,**37,38**
- File
- Body **28**
 - Identifier Bit 29,**30**
 - Header **30**
 - Record 28,30,41,**43,47,49,71**
 - Mark 27,**28,43,53,72**
 - Number **29,38,39,46,47,49**
 - Overflow **44,47,50**
 - Size Interaction **42**
 - Word **29,72**
- File,
- Current 37,46,47,48,**52**
 - Tape **27,71**
- Files 27,71
- Incremental Addition of **52,53,**
67
 - Marking **58**
 - Non-premarked **61**
 - Premarked **60,61**
- Find
- End of Valid Data Command . **37,38,41,**
50,58,61
 - File Command 25,**37,38**
 - Free Field 29,**30,39,40,41,43,72**
 - Front Panel Lamps 13,**14,51**
 - Fuses **5**
- Gap
- Interfile **27,30,72**
 - Interrecord 27,**29,72**
 - Glossary **71**
 - Grounding Requirements **6**

Handling Errors 44,46,56,59
 Head, Magnetic Tape 14,15
 Header
 Checksum 30,71
 File Identifier 30
 Record 28,30
 HP-IB 1,10,11,21,23,24,25
 Interface 10
 System Terms 21
 Worksheet 11,23,85

Identifier
 Buffer Status 63,64
 File 28,30,41,43,47,49,71
 Record 28,30,41,43,47,49,71
 Identity Code, Device 65
 IF 32,38
 IM 32,40
 Immediate Execution commands 31,32,
 34,37,40,41,43,48,50,51

Indication, Errors 14,18,19,47,48,
 51,56,59

Initialized Conditions 33,34,57
 Input Mask 40
 Input/Output of Data 1,51,59,63
 Inserting the Cartridge 14
 Inspection Procedures 5
 Installation Procedures 5
 Interaction, File Size 42
 Interface Connection 10
 Interfile Gap 27,30,72
 Interrecord Gap 27,29,72
 Interrupt Service Routine 59,62
 Interval, Time 51,57,69
 IR 32,39

Jump, Device Specified 66

Lamps, Front Panel 13,14,51
 Legal Tape Positions 41,43,61
 Length Word 30,72
 Line Voltage 7,8
 Listen Only (LO) 66,67,68,69
 Listeners 22,25
 Local Lockout Message 23,24
 Local Message 23,24
 Logging, Data 1,51,66
 Logical End of Tape 30

Magnetic Tape
 Cartridge 1,13,15,16,69,71
 Head 14,15
 Mark
 EVD 30,37,41,43,44,46,47,
 50,52,53,58,59,71
 File 27,28,72
 File Command 41,52,61
 Record Command 43,61
 Marking Files 41,58
 Masks
 Input 40
 Require Service 40,62
 Message Concepts 23
 MF 32,41,52,61
 Modes
 Autoverify 34,57,69
 LO 11,66,67,68,69
 Self Identify 64,65
 TO 11,68,69
 Mounting Adaption, Rack 8,9
 MR 32,43,61

Non-premarked Files 61
 Non-updateable Records 28,72
 Normal Operation 58
 Number, File 29,38,39,46,47,49

- SD 32,48,57,69
- Select
 - Code 8,10,11,57
 - Drive Command 48,57,69
- Self
 - Identify Mode 64,65
 - Test
 - Procedure 17,18,19
 - Switch 12,18,19
 - Command 50,51
- Serial Poll 21,45,56,57
- SF 32,49,52,60,61
- SI 32,49,60,61
- Size, Absolute 30,39
- Slack Area 29,73
- Specifications vii,viii
- Specifier, Continuous Output 36,37
- SR 32,50,53,60,61
- SRQ 23,24,40,78
- ST 32,50,51
- Standard Interchange Format (SIF)
 - 27,28,29,30
- Status
 - Bit Message 23,24,81,82,83
 - Byte 23,24,45,66,79,80
 - Byte Message 23,34
 - Byte Value 45,46
 - Identifier, Buffer 63,64
- Store
 - File Command 49,52,60,61
 - File Identifier Record Command
 - 49,60,61
 - Record Command 50,53,60,61
- Syntax Guidelines 33
- Syntax, Command 32
- System Terms, HP-IB 21
- Talk Only (TO) 68,69
- Talkers 22,25
- Tape
 - Care 15
 - Cartridge 1,13,15,16,69,71
 - Conditioning 16
 - File 27,71
 - Head Cleaning 14,15
 - Life 69
 - Respooling 16
- Termination of Data List 36
- Terminator, Command 25
- Test
 - Procedure 17,18,19
 - Results
 - Drive 0 45
 - Drive 1 45
 - Electronics 45
- Testing R/W Circuitry 17,50
- Theory of Operation 55
- TI 32,51,57,69
- Time Delay 51
- Tracks 27,73
- Transfer Parameters 25
- Trigger Message 23,24
- Typical Tape Capacity 42
- Updateable Records 28,73
- Verify, Automatic 34,57,69
- Voltage
 - Line 7,8
 - Selection 7,8

W

WF	32,52,53,67
Word	
File	29,72
Record	30,73
Worksheet, HP-IB	11,23,85
WR	32,53,67
Write	
Enabled	13,67
File Command	51,52,53,67
Protected	13
Record Command	53,67

Appendix F

Status and Errors

Status Byte

(response to Serial Poll)

Bit 0	Bit 1	Bit 2	Bit 3	Bit 4	Bit 5	Bit 6	Bit 7
data buffer empty	data buffer full	ready for next instruction	initialized	always 0 (not used)	error	request service (SRQ)	drive # 1 selected

Status Byte Value

1. data buffer empty
2. data buffer full
4. ready for next instruction
8. initialized (set only after power on or device clear) *or self test?*
16. not used (always 0)
32. error
64. require service (SRQ)
128. drive #1 selected

Error Code #1 (First Parameter Returned)

0. No error or test passed
1. Cartridge out or file not found.
2. Cartridge is write protected or record not found.
4. Drive not present or internal temperature is too high.
8. Verify failed or illegal tape position.
16. File/record overflow or attempt to read an empty file/record.
32. Body checksum error or attempt to store, write or mark a non-updateable record.
64. Header checksum error or end of tape.
128. Servo or hardware failure.

Error Code #2 (Second Parameter Returned)

0. No error.
1. Unexpected byte received.
2. Unexpected byte requested.
4. Illegal character in parameter list.
8. Mandatory parameter is not specified.
16. Too many parameters specified.
32. Parameter is out of limits.
64. Syntax error.

An unexpected byte received error is generated when the CTU is ready to output a data list, and it receives any type of data (data list or command).

An unexpected byte requested error is generated when the CTU is ready to input a data list, and it receives a data output command.

These errors may also occur because a data list (either input or output) was not terminated with the EOD character.

SALES & SERVICE OFFICES

AFRICA, ASIA, AUSTRALIA

Appendix E

ANGOLA
Telectra
Empresa Técnica de Equipamentos Eléctricos, S.A. R.L.
R. Barbosa Rodrigues 424 DT
Cassa Postal 6467
Luanda
Tel 35515/6
Cable: TFELECTRA Luanda

HONG KONG
Schmidt & Co (Hong Kong) Ltd
P.O. Box 297
Connaught Centre
39th Floor
Connaught Road, Central
Hong Kong
Tel Hk 252291-5
Telex 74766 SCHMC HK
Cable: SCHMIDTGO Hong Kong

Blue Star Ltd
1-1-117 1
Sarajev Devi Road
Secunderabad 500 003
Tel 70126, 70127
Cable: BLUESTAR
Telex 459
Blue Star Ltd
2-34 Kordambakkam High Road
Madras 600034
Tel 82056
Telex 641-379
Cable: BLUESTAR
Blue Star Ltd
Nadhrat Mansions
2nd Floor Bistapur
Jamshedpur 831 001
Tel 7383
Cable: BLUESTAR
Telex 240

Yokogawa-Hewlett-Packard Ltd
Mitsui Bussan Building
105, Chome-1 San-no-maru
Mito, Ibaragi 310
Tel 0292-25-7470
Yokogawa-Hewlett-Packard Ltd
Inoue Building
1346-3, Asahi-cho, 1-chome
Atsugi, Kansai 243
Tel 0462-24-0452
Yokogawa-Hewlett-Packard Ltd
Kimura Building
3rd Floor 20
2-chome, Tsukuba
Kumagaya, Saitama 360
Tel 0485-24-6263

Hewlett-Packard (N.Z.) Ltd
Palukanga Professional Centre
267 Pakuranga Highway
Box 51092
Pakuranga
Tel 369-651
Telex NZ 3839
Cable: HEWPACK Auckland
Analytical/Medical Only
Medical Supplies N.Z. Ltd.
Scientific Division
45 Kelvin Gore Rd., Newmarket
P.O. Box 1234
Auckland
Tel 75-289
Telex 2958 MEDISUP
Cable: DENTAL Auckland
Analytical/Medical Only
Medical Supplies N.Z. Ltd
P.O. Box 1904
147-161 Tory St
Wellington
Tel 650-799
Telex 3656
Cable: DENTAL Wellington
Analytical/Medical Only
Medical Supplies N.Z. Ltd
P.O. Box 309
239 Stanmore Road
Christchurch
Tel 892-019
Cable: DENTAL Christchurch
Analytical/Medical Only
Medical Supplies N.Z. Ltd
383 Great King Street
P.O. Box 233
Dunedin
Tel 88-177
Cable: DENTAL Dunedin

PHILIPPINES
The Online Advanced Systems Corporation
6th Floor, Yuju Co. Bldg
560 Donato Paredes St.
Manila
Tel: 48-71-49, 48-68-53
In Makati: 85-25-81, 85-34-91
Telex 3274 ONLINE

TAIWAN
Hewlett-Packard Far East Ltd.
Taiwan Branch
39 Chung Shiao West Road
Sec. 1, 7th Floor
Taipei
Tel: 3819166-4
Telex: 21824 HEWPACK
Cable: HEWPACK TAIPEI
Hewlett-Packard Far East Ltd
Taiwan Branch
88-2 Chung Cheng 3rd Road
Kaohsiung
Tel: (07) 242318-Kaohsiung
Analytical Only
San Kwang Instruments Co., Ltd.
No. 20, Yang Sun Road
Taipei
Tel: 3715171-4 (15 lines)
Telex: 22894 SANKWANG
Cable: SANKWANG TAIPEI

AUSTRALIA
Hewlett-Packard Australia Pty Ltd
31-41 Joseph Street
Blackburn, Victoria 3130
P.O. Box 36
Doncaster East, Victoria 3109
Tel 89-6351
Telex 31-024
Cable: HEWPAARD Melbourne
Hewlett-Packard Australia Pty Ltd
31 Bridge Street
Pymble
New South Wales, 2073
Tel 449-6566
Telex 21561
Cable: HEWPAARD Sydney
Hewlett-Packard Australia Pty Ltd
153 Greenhill Road
Parkside, S.A. 5063
Tel 272-5911
Telex 82535 ADAL
Cable: HEWPAARD Adelaide
Hewlett-Packard Australia Pty Ltd
141 Stirling Highway
Nedlands, W.A. 6009
Tel 86-5455
Telex 932859 PERTH
Cable: HEWPAARD PERTH
Hewlett-Packard Australia Pty Ltd
121 Wolongong Street
Fyshwick, A.C.T. 2609
Tel 95-2733
Telex 62650 Canberra
Cable: HEWPAARD CANBERRA
Hewlett-Packard Australia Pty Ltd
5th Floor
Teachers Union Building
495-499 Boundary Street
Spring Hill, 4000 Queensland
Tel 229-1544
Cable: HEWPAARD Brisbane

INDIA
Blue Star Ltd
Kasturi Buildings
Janshapur Tala Rd.
Bombay 400 020
Tel 29-50-21
Cable: BLUEFR051
Blue Star Ltd
Salas
414/2 Nr. Savarkar Marg
Prabhadevi
Bombay 400 025
Tel 45-78-87
Telex 4093
Cable: FROSTBLUE
Blue Star Ltd
Band Bhai House
Prabhadevi
Bombay 400 025
Tel 45-73-01
Cable: BLUESTAR
Blue Star Ltd
1492 Gival Lanes
Kanpur 208 001
Tel 6-88-82
Cable: BLUESTAR
Blue Star Ltd
7th & 8th Floor
Bhandari House
91 Nehru Place
Calcutta 700 001
Tel: 23-0131
Cable: BLUESTAR
Blue Star Ltd
7th & 8th Floor
Bhandari House
91 Nehru Place
New Delhi 110024
Tel: 634770 & 635166
Telex 2463
Cable: BLUESTAR
Blue Star Ltd
8th Floor
1111A, Magaraj Road
Bangalore 560 025
Tel: 55668
Telex 430
Cable: BLUESTAR
Blue Star Ltd
Measini Mandiran
157/6 Mahatma Gandhi Rd
Coimbatore 682 016
Tel: 32069, 32161, 32282
Telex 046-514
Cable: BLUESTAR

INDONESIA
BERCA Indonesia P 1
P.O. Box 496
1st Floor J.L. Cikam Raya 61
Jakarta
Tel: 56388, 40369, 49886
Telex 42895
Cable: BERCACON
BERCA Indonesia P 1
63 J.L. Raya Gubeng
Surabaya
Tel 44309

KENYA
Technical Engineering Services
14 A Ltd.
P.O. Box 18311
Nairobi
Tel 55726, 556762
Cable: PROTON
Medical Only
International Aeradio E A Ltd.
P.O. Box 19012
Nairobi Airport
Nairobi
Tel 336055-56
Telex 22201-22201
Cable: INTAERIO Nairobi
KOREA
Samsung Electronics Co., Ltd
20th H. Dongbang Bldg 250 2-KA
P.O. Box 2775
Tangpyung-Ro, Chung-Ku
Seoul
Tel 4231 6811
Telex 22575
Cable: ELEKSTAR Seoul
MALAYSIA
Telex Mulu Sein Bldg
2 Lorong 13/6A
Section 13
Petaling Jaya, Selangor
Tel 54994 5496
Telex MA 37605
Protel Engineering
P.O. Box 197
Tel 256-5100 Kuching Road
Kuching, Sarawak
Tel 2400
Cable: PROTEL ENG
MOZAMBIQUE
A.N. Goncalves, Ltd
162-1, Apt 14 Av. D. Luis
Cassa Postal 107
Lourenco Marques
Tel 27091, 27114
Telex 6-203 NEGOM Mo
Cable: NEGOM
NEW ZEALAND
Hewlett-Packard (N.Z.) Ltd
P.O. Box 9443
Courtney Place
Wellington
Tel 827-159
Telex NZ 3839
Cable: HEWPACK Wellington

NETHERLANDS
Hewlett-Packard (N.Z.) Ltd
Palukanga Professional Centre
267 Pakuranga Highway
Box 51092
Pakuranga
Tel 369-651
Telex NZ 3839
Cable: HEWPACK Auckland
Analytical/Medical Only
Medical Supplies N.Z. Ltd.
Scientific Division
45 Kelvin Gore Rd., Newmarket
P.O. Box 1234
Auckland
Tel 75-289
Telex 2958 MEDISUP
Cable: DENTAL Auckland
Analytical/Medical Only
Medical Supplies N.Z. Ltd
P.O. Box 1904
147-161 Tory St
Wellington
Tel 650-799
Telex 3656
Cable: DENTAL Wellington
Analytical/Medical Only
Medical Supplies N.Z. Ltd
P.O. Box 309
239 Stanmore Road
Christchurch
Tel 892-019
Cable: DENTAL Christchurch
Analytical/Medical Only
Medical Supplies N.Z. Ltd
383 Great King Street
P.O. Box 233
Dunedin
Tel 88-177
Cable: DENTAL Dunedin

RUSSIA
Hewlett-Packard (N.Z.) Ltd
Palukanga Professional Centre
267 Pakuranga Highway
Box 51092
Pakuranga
Tel 369-651
Telex NZ 3839
Cable: HEWPACK Auckland
Analytical/Medical Only
Medical Supplies N.Z. Ltd.
Scientific Division
45 Kelvin Gore Rd., Newmarket
P.O. Box 1234
Auckland
Tel 75-289
Telex 2958 MEDISUP
Cable: DENTAL Auckland
Analytical/Medical Only
Medical Supplies N.Z. Ltd
P.O. Box 1904
147-161 Tory St
Wellington
Tel 650-799
Telex 3656
Cable: DENTAL Wellington
Analytical/Medical Only
Medical Supplies N.Z. Ltd
P.O. Box 309
239 Stanmore Road
Christchurch
Tel 892-019
Cable: DENTAL Christchurch
Analytical/Medical Only
Medical Supplies N.Z. Ltd
383 Great King Street
P.O. Box 233
Dunedin
Tel 88-177
Cable: DENTAL Dunedin

SINGAPORE
Hewlett-Packard Singapore
Tel 705251 (15 lines)
Telex BH 4022
SOUTH AFRICA
Hewlett-Packard South Africa (Pty.) Ltd
Private Bag Wendywood
Sandton, Transvaal 2144
Hewlett-Packard Centre
Dagbasi Street, Wendywood
Sandton, Transvaal 2144
Tel 802-104018
Telex 8-4782
Cable: HEWPACK JOHANNESBURG
Service Department
Hewlett-Packard South Africa (Pty.) Ltd
P.O. Box 39325
Graham's Sandus, 2018
451 Wymberg Extension 3.
Sandton, 2001
Tel 636-8188-9
Telex 8-2391
Hewlett-Packard South Africa (Pty.) Ltd
Howard Place, Cape Province, 7450
Pine Park Centre, Forest Drive.
Pretorius, Cape Province, 7405
Tel 53-7955 (bu 9)
Cable 55-0006
Service Department
Hewlett-Packard South Africa (Pty.) Ltd
P.O. Box 37099
(Overport, Durban 4067)
Barby House
641 Ridge Road
Durban, 4001
Tel 88-7478
Telex 6-7954

THAILAND
UNIMESA Co., Ltd
Ecom Research Building
Bangkok Sukunvit 1
Bangkok
Tel 932887, 930338
Cable: UNIMESA Bangkok
UGANDA
Medical Only
International Aeradio E A. J. Ltd
P.O. Box 2577
Kampala
Tel 54388
Cable: INTAERIO Kampala
ZAMBIA
R. J. Tibary (Zambia) Ltd
P.O. Box 2792
Lusaka
Tel 37393
Cable: ARJAYTEL Lusaka

THAILAND
UNIMESA Co., Ltd
Ecom Research Building
Bangkok Sukunvit 1
Bangkok
Tel 932887, 930338
Cable: UNIMESA Bangkok
UGANDA
Medical Only
International Aeradio E A. J. Ltd
P.O. Box 2577
Kampala
Tel 54388
Cable: INTAERIO Kampala
ZAMBIA
R. J. Tibary (Zambia) Ltd
P.O. Box 2792
Lusaka
Tel 37393
Cable: ARJAYTEL Lusaka

THAILAND
UNIMESA Co., Ltd
Ecom Research Building
Bangkok Sukunvit 1
Bangkok
Tel 932887, 930338
Cable: UNIMESA Bangkok
UGANDA
Medical Only
International Aeradio E A. J. Ltd
P.O. Box 2577
Kampala
Tel 54388
Cable: INTAERIO Kampala
ZAMBIA
R. J. Tibary (Zambia) Ltd
P.O. Box 2792
Lusaka
Tel 37393
Cable: ARJAYTEL Lusaka

THAILAND
UNIMESA Co., Ltd
Ecom Research Building
Bangkok Sukunvit 1
Bangkok
Tel 932887, 930338
Cable: UNIMESA Bangkok
UGANDA
Medical Only
International Aeradio E A. J. Ltd
P.O. Box 2577
Kampala
Tel 54388
Cable: INTAERIO Kampala
ZAMBIA
R. J. Tibary (Zambia) Ltd
P.O. Box 2792
Lusaka
Tel 37393
Cable: ARJAYTEL Lusaka

THAILAND
UNIMESA Co., Ltd
Ecom Research Building
Bangkok Sukunvit 1
Bangkok
Tel 932887, 930338
Cable: UNIMESA Bangkok
UGANDA
Medical Only
International Aeradio E A. J. Ltd
P.O. Box 2577
Kampala
Tel 54388
Cable: INTAERIO Kampala
ZAMBIA
R. J. Tibary (Zambia) Ltd
P.O. Box 2792
Lusaka
Tel 37393
Cable: ARJAYTEL Lusaka

THAILAND
UNIMESA Co., Ltd
Ecom Research Building
Bangkok Sukunvit 1
Bangkok
Tel 932887, 930338
Cable: UNIMESA Bangkok
UGANDA
Medical Only
International Aeradio E A. J. Ltd
P.O. Box 2577
Kampala
Tel 54388
Cable: INTAERIO Kampala
ZAMBIA
R. J. Tibary (Zambia) Ltd
P.O. Box 2792
Lusaka
Tel 37393
Cable: ARJAYTEL Lusaka

THAILAND
UNIMESA Co., Ltd
Ecom Research Building
Bangkok Sukunvit 1
Bangkok
Tel 932887, 930338
Cable: UNIMESA Bangkok
UGANDA
Medical Only
International Aeradio E A. J. Ltd
P.O. Box 2577
Kampala
Tel 54388
Cable: INTAERIO Kampala
ZAMBIA
R. J. Tibary (Zambia) Ltd
P.O. Box 2792
Lusaka
Tel 37393
Cable: ARJAYTEL Lusaka

THAILAND
UNIMESA Co., Ltd
Ecom Research Building
Bangkok Sukunvit 1
Bangkok
Tel 932887, 930338
Cable: UNIMESA Bangkok
UGANDA
Medical Only
International Aeradio E A. J. Ltd
P.O. Box 2577
Kampala
Tel 54388
Cable: INTAERIO Kampala
ZAMBIA
R. J. Tibary (Zambia) Ltd
P.O. Box 2792
Lusaka
Tel 37393
Cable: ARJAYTEL Lusaka

THAILAND
UNIMESA Co., Ltd
Ecom Research Building
Bangkok Sukunvit 1
Bangkok
Tel 932887, 930338
Cable: UNIMESA Bangkok
UGANDA
Medical Only
International Aeradio E A. J. Ltd
P.O. Box 2577
Kampala
Tel 54388
Cable: INTAERIO Kampala
ZAMBIA
R. J. Tibary (Zambia) Ltd
P.O. Box 2792
Lusaka
Tel 37393
Cable: ARJAYTEL Lusaka

THAILAND
UNIMESA Co., Ltd
Ecom Research Building
Bangkok Sukunvit 1
Bangkok
Tel 932887, 930338
Cable: UNIMESA Bangkok
UGANDA
Medical Only
International Aeradio E A. J. Ltd
P.O. Box 2577
Kampala
Tel 54388
Cable: INTAERIO Kampala
ZAMBIA
R. J. Tibary (Zambia) Ltd
P.O. Box 2792
Lusaka
Tel 37393
Cable: ARJAYTEL Lusaka

THAILAND
UNIMESA Co., Ltd
Ecom Research Building
Bangkok Sukunvit 1
Bangkok
Tel 932887, 930338
Cable: UNIMESA Bangkok
UGANDA
Medical Only
International Aeradio E A. J. Ltd
P.O. Box 2577
Kampala
Tel 54388
Cable: INTAERIO Kampala
ZAMBIA
R. J. Tibary (Zambia) Ltd
P.O. Box 2792
Lusaka
Tel 37393
Cable: ARJAYTEL Lusaka

THAILAND
UNIMESA Co., Ltd
Ecom Research Building
Bangkok Sukunvit 1
Bangkok
Tel 932887, 930338
Cable: UNIMESA Bangkok
UGANDA
Medical Only
International Aeradio E A. J. Ltd
P.O. Box 2577
Kampala
Tel 54388
Cable: INTAERIO Kampala
ZAMBIA
R. J. Tibary (Zambia) Ltd
P.O. Box 2792
Lusaka
Tel 37393
Cable: ARJAYTEL Lusaka

THAILAND
UNIMESA Co., Ltd
Ecom Research Building
Bangkok Sukunvit 1
Bangkok
Tel 932887, 930338
Cable: UNIMESA Bangkok
UGANDA
Medical Only
International Aeradio E A. J. Ltd
P.O. Box 2577
Kampala
Tel 54388
Cable: INTAERIO Kampala
ZAMBIA
R. J. Tibary (Zambia) Ltd
P.O. Box 2792
Lusaka
Tel 37393
Cable: ARJAYTEL Lusaka

THAILAND
UNIMESA Co., Ltd
Ecom Research Building
Bangkok Sukunvit 1
Bangkok
Tel 932887, 930338
Cable: UNIMESA Bangkok
UGANDA
Medical Only
International Aeradio E A. J. Ltd
P.O. Box 2577
Kampala
Tel 54388
Cable: INTAERIO Kampala
ZAMBIA
R. J. Tibary (Zambia) Ltd
P.O. Box 2792
Lusaka
Tel 37393
Cable: ARJAYTEL Lusaka

THAILAND
UNIMESA Co., Ltd
Ecom Research Building
Bangkok Sukunvit 1
Bangkok
Tel 932887, 930338
Cable: UNIMESA Bangkok
UGANDA
Medical Only
International Aeradio E A. J. Ltd
P.O. Box 2577
Kampala
Tel 54388
Cable: INTAERIO Kampala
ZAMBIA
R. J. Tibary (Zambia) Ltd
P.O. Box 2792
Lusaka
Tel 37393
Cable: ARJAYTEL Lusaka

THAILAND
UNIMESA Co., Ltd
Ecom Research Building
Bangkok Sukunvit 1
Bangkok
Tel 932887, 930338
Cable: UNIMESA Bangkok
UGANDA
Medical Only
International Aeradio E A. J. Ltd
P.O. Box 2577
Kampala
Tel 54388
Cable: INTAERIO Kampala
ZAMBIA
R. J. Tibary (Zambia) Ltd
P.O. Box 2792
Lusaka
Tel 37393
Cable: ARJAYTEL Lusaka

THAILAND
UNIMESA Co., Ltd
Ecom Research Building
Bangkok Sukunvit 1
Bangkok
Tel 932887, 930338
Cable: UNIMESA Bangkok
UGANDA
Medical Only
International Aeradio E A. J. Ltd
P.O. Box 2577
Kampala
Tel 54388
Cable: INTAERIO Kampala
ZAMBIA
R. J. Tibary (Zambia) Ltd
P.O. Box 2792
Lusaka
Tel 37393
Cable: ARJAYTEL Lusaka

THAILAND
UNIMESA Co., Ltd
Ecom Research Building
Bangkok Sukunvit 1
Bangkok
Tel 932887, 930338
Cable: UNIMESA Bangkok
UGANDA
Medical Only
International Aeradio E A. J. Ltd
P.O. Box 2577
Kampala
Tel 54388
Cable: INTAERIO Kampala
ZAMBIA
R. J. Tibary (Zambia) Ltd
P.O. Box 2792
Lusaka
Tel 37393
Cable: ARJAYTEL Lusaka

THAILAND
UNIMESA Co., Ltd
Ecom Research Building
Bangkok Sukunvit 1
Bangkok
Tel 932887, 930338
Cable: UNIMESA Bangkok
UGANDA
Medical Only
International Aeradio E A. J. Ltd
P.O. Box 2577
Kampala
Tel 54388
Cable: INTAERIO Kampala
ZAMBIA
R. J. Tibary (Zambia) Ltd
P.O. Box 2792
Lusaka
Tel 37393
Cable: ARJAYTEL Lusaka

THAILAND
UNIMESA Co., Ltd
Ecom Research Building
Bangkok Sukunvit 1
Bangkok
Tel 932887, 930338
Cable: UNIMESA Bangkok
UGANDA
Medical Only
International Aeradio E A. J. Ltd
P.O. Box 2577
Kampala
Tel 54388
Cable: INTAERIO Kampala
ZAMBIA
R. J. Tibary (Zambia) Ltd
P.O. Box 2792
Lusaka
Tel 37393
Cable: ARJAYTEL Lusaka

THAILAND
UNIMESA Co., Ltd
Ecom Research Building
Bangkok Sukunvit 1
Bangkok
Tel 932887, 930338
Cable: UNIMESA Bangkok
UGANDA
Medical Only
International Aeradio E A. J. Ltd
P.O. Box 2577
Kampala
Tel 54388
Cable: INTAERIO Kampala
ZAMBIA
R. J. Tibary (Zambia) Ltd
P.O. Box 2792
Lusaka
Tel 37393
Cable: ARJAYTEL Lusaka

THAILAND
UNIMESA Co., Ltd
Ecom Research Building
Bangkok Sukunvit 1
Bangkok
Tel 932887, 930338
Cable: UNIMESA Bangkok
UGANDA
Medical Only
International Aeradio E A. J. Ltd
P.O. Box 2577
Kampala
Tel 54388
Cable: INTAERIO Kampala
ZAMBIA
R. J. Tibary (Zambia) Ltd
P.O. Box 2792
Lusaka
Tel 37393
Cable: ARJAYTEL Lusaka

THAILAND
UNIMESA Co., Ltd
Ecom Research Building
Bangkok Sukunvit 1
Bangkok
Tel 932887, 930338
Cable: UNIMESA Bangkok
UGANDA
Medical Only
International Aeradio E A. J. Ltd
P.O. Box 2577
Kampala
Tel 54388
Cable: INTAERIO Kampala
ZAMBIA
R. J. Tibary (Zambia) Ltd
P.O. Box 2792
Lusaka
Tel 37393
Cable: ARJAYTEL Lusaka

THAILAND
UNIMESA Co., Ltd
Ecom Research Building
Bangkok Sukunvit 1
Bangkok
Tel 932887, 930338
Cable: UNIMESA Bangkok
UGANDA
Medical Only
International Aeradio E A. J. Ltd
P.O. Box 2577
Kampala
Tel 54388
Cable: INTAERIO Kampala
ZAMBIA
R. J. Tibary (Zambia) Ltd
P.O. Box 2792
Lusaka
Tel 37393
Cable: ARJAYTEL Lusaka

THAILAND
UNIMESA Co., Ltd
Ecom Research Building
Bangkok Sukunvit 1
Bangkok
Tel 932887, 930338
Cable: UNIMESA Bangkok
UGANDA
Medical Only
International Aeradio E A. J. Ltd
P.O. Box 2577
Kampala
Tel 54388
Cable: INTAERIO Kampala
ZAMBIA
R. J. Tibary (Zambia) Ltd
P.O. Box 2792
Lusaka
Tel 37393
Cable: ARJAYTEL Lusaka

THAILAND
UNIMESA Co., Ltd
Ecom Research Building
Bangkok Sukunvit 1
Bangkok
Tel 932887, 930338
Cable: UNIMESA Bangkok
UGANDA
Medical Only
International Aeradio E A. J. Ltd
P.O. Box 2577
Kampala
Tel 54388
Cable: INTAERIO Kampala
ZAMBIA
R. J. Tibary (Zambia) Ltd
P.O. Box 2792
Lusaka
Tel 37393
Cable: ARJAYTEL Lusaka

THAILAND
UNIMESA Co., Ltd
Ecom Research Building
Bangkok Sukunvit 1
Bangkok
Tel 932887, 930338
Cable: UNIMESA Bangkok
UGANDA
Medical Only
International Aeradio E A. J. Ltd
P.O. Box 2577
Kampala
Tel 54388
Cable: INTAERIO Kampala
ZAMBIA
R. J. Tibary (Zambia) Ltd
P.O. Box 2792
Lusaka
Tel 37393
Cable: ARJAYTEL Lusaka

THAILAND
UNIMESA Co., Ltd
Ecom Research Building
Bangkok Sukunvit 1
Bangkok
Tel 932887, 930338
Cable: UNIMESA Bangkok
UGANDA
Medical Only
International Aeradio E A. J. Ltd
P.O. Box 2577
Kampala
Tel 54388
Cable: INTAERIO Kampala
ZAMBIA
R. J. Tibary (Zambia) Ltd
P.O. Box 2792
Lusaka
Tel 37393
Cable: ARJAYTEL Lusaka

THAILAND
UNIMESA Co., Ltd
Ecom Research Building
Bangkok Sukunvit 1
Bangkok
Tel 932887, 930338
Cable: UNIMESA Bangkok
UGANDA
Medical Only
International Aeradio E A. J. Ltd
P.O. Box 2577
Kampala
Tel 54388
Cable: INTAERIO Kampala
ZAMBIA
R. J. Tibary (Zambia) Ltd
P.O. Box 2792
Lusaka
Tel 37393
Cable: ARJAYTEL Lusaka

THAILAND
UNIMESA Co., Ltd
Ecom Research Building
Bangkok Sukunvit 1
Bangkok
Tel 932887, 930338
Cable: UNIMESA Bangkok
UGANDA
Medical Only
International Aeradio E A. J. Ltd
P.O. Box 2577
Kampala
Tel 54388
Cable: INTAERIO Kampala
ZAMBIA
R. J. Tibary (Zambia) Ltd
P.O. Box 2792
Lusaka
Tel 37393
Cable: ARJAYTEL Lusaka

THAILAND
UNIMESA Co., Ltd
Ecom Research Building
Bangkok Sukunvit 1
Bangkok
Tel 932887, 930338
Cable: UNIMESA Bangkok
UGANDA
Medical Only
International Aeradio E A. J. Ltd
P.O. Box 2577
Kampala
Tel 54388
Cable: INTAERIO Kampala
ZAMBIA
R. J. Tibary (Zambia) Ltd
P.O. Box 2792
Lusaka
Tel 37393
Cable: ARJAYTEL Lusaka

THAILAND
UNIMESA Co., Ltd
Ecom Research Building
Bangkok Sukunvit 1
Bangkok
Tel 932887, 930338
Cable: UNIMESA Bangkok
UGANDA
Medical Only
International Aeradio E A. J. Ltd
P.O. Box 2577
Kampala
Tel 54388
Cable: INTAERIO Kampala
ZAMBIA
R. J. Tibary (Zambia) Ltd
P.O. Box 2792
Lusaka
Tel 37393
Cable: ARJAYTEL Lusaka

THAILAND
UNIMESA Co., Ltd
Ecom Research Building
Bangkok Sukunvit 1
Bangkok
Tel 932887, 930338
Cable: UNIMESA Bangkok
UGANDA
Medical Only
International Aeradio E A. J. Ltd
P.O. Box 2577
Kampala
Tel 54388
Cable: INTAERIO Kampala
ZAMBIA
R. J. Tibary (Zambia) Ltd
P.O. Box 2792
Lusaka
Tel 373

EUROPE, NORTH AFRICA AND MIDDLE EAST

94

AUSTRIA
Hewlett-Packard Ges m b H
Handlskai 52
P.O. Box 7
A-1205 Vienna
Tel: (0222) 351621 to 27
Cable: HEWPAK Vienna
Telex: 75923 hewpak a

BELGIUM
Hewlett-Packard Benelux
S.A. N.V.
Avenue de Col-Vert, 1
(Groenkraaglaan)
B-1170 Brussels
Tel: (02) 672 22 46
Cable: PALOEN Brussels
Telex: 23 494 paloben brn

CYPRUS
Κυπριακή
19, Γεωργίου & Χερσούπου Ρδ
P.O. Box 1152
CY-Nicosia
Tel: 45628-29
Cable: KYPPIGNIS PANDEHIS
Telex: 3016

CZECHOSLOVAKIA
Vývojová a Provozní Závadna
Výzkumný Ústav v Bechovicích
ČSSR 25097
Bechovice u Prahy
Tel: 89 93 41
Telex: 121333
Institute of Medical Biomics
Vyskumný Ústav Lekárskej Biomiky
Jindrova 6
CS-68346 Bratislava-Kramare
Tel: 44-551 45-541

DDR
Entwicklungs-labor der Otto Dresdner
Forschungsinstitut Meinsberg
DDR-7305
Walheim/Meinsberg
Tel: 37 667
Telex: 112145
Export Contact AG Zuerich
Guenther Fergler
Schlegelstrasse 15
1040 Berlin
Tel: 47-71-12
Telex: 111889

DENMARK
Hewlett-Packard A/S
Bakvej 52
DK-3460 Birkerød
Tel: (02) 81 66 40
Cable: HEWPAK AS
Telex: 166 40 hpas
Hewlett-Packard A/S
Navnvej 1
DK-9600 Silkeborg
Tel: (06) 82 71 66
Telex: 166 40 hpas
Cable: HEWPAK AS

FINLAND
Hewlett-Packard OY
Nankkoursentie 5
P.O. Box 6
SF-00211 Helsinki 21
Tel: (09) 692-703
Cable: HEWPAK OY Helsinki
Telex: 12-1563 HEWPA SF

FRANCE
Hewlett-Packard France
Quartier de Courcouronnes
Boite Postale No 6
F-91401 Orsay Cedex
Tel: (1) 907 78 25
Cable: HEWPAK Orsay
Telex: 600046

Hewlett-Packard France
Agence Régionale
Le Saquin
Chemin des Moulins
B.P. 162
F-69130 Ecully
Tel: (078) 23 25 75
Cable: HEWPAK Ecully
Telex: 31 06 17

Hewlett-Packard France
Agence Régionale
Pérenité de la Cadrère
Chemin de la Cadrère, 20
F-31300 Toulouse-Le Mirail
Tel: (05) 40 11 12
Cable: HEWPAK 51957
Telex: 519957

Hewlett-Packard France
Agence Régionale
Aéroport international de
Marseille-Margonite
F-13727 Margonite
Tel: (0)1 89 12 36
Cable: HEWPAK MARGN
Telex: 410770

Hewlett-Packard France
Agence Régionale
C.C. Avenue de Rochester
F-17114 Rochefort
F-35014 Rennes Cédex
Tel: (09) 36 33 21
Cable: HEWPAK 74912
Telex: 749912

Hewlett-Packard France
Agence Régionale
74 Avenue de la Robertsau
F-67000 Strasbourg
Tel: (88) 35 23 20 21
Telex: 890141
Cable: HEWPAK STRBG
Telex: 890141

Hewlett-Packard France
Agence Régionale
Centre Varanin
291 rue Colbert
L'Entre A2
F-59000 Lille
Tel: (20) 51 44 14
Telex: 820744

Hewlett-Packard France
Centre d'Alliance Paris-Nord
83 Avenue Angers
Rue de La Continence de Paris
B.P. 306
F-93153
Le Blanc Mesnil Cédex
Tel: (01) 931 88 30

**GERMAN FEDERAL
REPUBLIC**
Hewlett-Packard GmbH
Vertriebszentrale Frankfurt
Bernstrasse 1-7
Postfach 369 140
D-60089 Frankfurt 56
Tel: (061) 50 04-1
Cable: HEWPAKSA Frankfurt
Telex: 04 11349 hpfmd

Hewlett-Packard GmbH
Technisches Büro Boblingen
Horenbergstrasse 110
D-7030 Boblingen, Württemberg
Tel: (07031) 667-1
Cable: HEPAK Boblingen
Telex: 07766539 bbn

Hewlett-Packard GmbH
Technisches Büro Düsseldorf
Emmuel-Léotz, Str. 1 (Süessstr.)
D-4000 Düsseldorf 11
Tel: (0211) 5971-1
Telex: 085-96 533 hpfmd d

Hewlett-Packard GmbH
Technisches Büro Hamburg
Wendensilasse 23
D-2000 Hamburg 1
Tel: (040) 24 13 93
Cable: HEWPAKSA Hamburg
Telex: 21 63 032 hpfmd d

IRELAND
Hewlett-Packard Ltd
King Street Lane
GB-Winnerish, Wokingham
Berks, RG31 5AR
Tel: (0734) 78 47 74
Telex: 647178-848179

Hewlett-Packard GmbH
Technisches Büro Nuremberg
Neumayer Str. 90
D-8500 Nuremberg
Tel: (0911) 56 30 83-85
Telex: 6623 860

Hewlett-Packard GmbH
Technisches Büro München
Unterhanger Strasse 28
ISAR Center
D-80107 Ottobrunn
Tel: (089) 601 30 61 7
Cable: HEWPAKSA Munchen
Telex: 057496S

Hewlett-Packard GmbH
Technisches Büro Berlin
Kestel Strasse 2-4
D-1000 Berlin 30
Tel: (030) 24 90 86
Telex: 18 3405 hpfmd d

GREECE
Kostas Karayannis
16 Ermou Street
GR-Athens 126
Tel: 3237731
Cable: HAKAR Athens
Telex: 21 59 62 hkar gr
Analytical Only
"INTECO"
G. Papathanassiou & Co
Marsi 17
GR - Athens 103
Tel: 522 1915
Cable: INTERRIKA Athens
Telex: 21 5328 INTE GR

HUNGARY
Műszaki és Melestechnikai
Szolgálat
Lenin Ki. 67
1391 Budapest VI
Tel: 42 03 38
Telex: 22 51 14

ICELAND
Medical Only
Elding Trading Company Inc
Hafnarvöllur, Tryggvatorgi
IS-Reykjavik
Tel: 1 56 20
Cable: ELDING Reykjavik

IRAN
Hewlett-Packard Iran Ltd
No. 13, Fourteenth St
Meydan Avenue
P.O. Box 41 2419
IR-Tehran
Tel: 851082-7
Telex: 713405 HEWP IR

IRAQ
Hewlett-Packard Trading Co.
Mansour City
Baghdad
Tel: 5517877
Telex: 245-5 Heparq ik
Cable: HEWPAK(IAQ),
Baghdad Iraq

ISRAEL
Hewlett-Packard Ltd
5201 Follview Dr
Rolling meadows 60008
Tel: (312) 255-9800
TWX 910-687-2260

INDONESIA
7301 North Siladale Road
Indianapolis 46236
Tel: (317) 842-1090
TWX 910-260-1397

INDONESIA
6500 South Ustiel Parkway
Englewood 80110
Tel: (303) 771-3455

CONNECTICUT
12 Lunar Drive
New Haven 06525
Tel: (203) 399-6551
TWX 719-465-2929

FLORIDA
P.O. Box 24210
2806 W. Oakland Park Blvd
FL Lauderdale 33311
Tel: (305) 731-2020

GEORGIA
P.O. Box 105005
Atlanta 30348
Tel: (404) 855-1500
TWX 810-766-4890

GEORGIA
Medical Service Only
"Augusta 30905"
Tel: (404) 736-6582
P.O. Box 2103
Warner Robins 31098
Tel: (912) 822-0449

HAWAII
2675 So. King Street
Honolulu 96814
Tel: (808) 955-4455
Telex: 723 705

ITALY
Hewlett-Packard Italiana S.p.A.
Via Amerigo Vesputcio 2
Casella postale 3645
I-20100 Milano
Tel: (2) 6251 (10 lines)
Cable: HEWPAK(ITA) Milano
Telex: 32046

Hewlett-Packard Italiana S.p.A.
Via Pietro Micone 40
Lang. Via Vesentini
I-35100 Padova
Tel: (49) 66 48 88
Telex: 41612 Hewpacki

Hewlett-Packard Italiana S.p.A.
Via S. Agnards, 7
I-50100 Pisa
Tel: (050) 2 32 04
Telex: 32946 via Milano

Hewlett-Packard Italiana S.p.A.
Via G. Arimellini 10
I-00143 Roma
Tel: (06) 54 69 67
Telex: 61514
Cable: HEWPAK(ITA) Roma

Hewlett-Packard Italiana S.p.A.
Corso Giovanni Lanza 94
I-10130 Torino
Tel: (011) 682245-659908
Medical-Calculators Only
Hewlett-Packard Italiana S.p.A.
Via Principe Acaia 43 G-G
I-95126 Catania
Tel: (095) 37 05 04

Hewlett-Packard Italiana S.p.A.
Via Amerigo Vesputcio, 9
I-80142 Napoli
Tel: (081) 33 77 11
Hewlett-Packard Italiana S.p.A.
Via E. Mass 9
I-40137 Bologna
Tel: (051) 30 78 87

KUWAIT
Al-Khadiya Trading &
Contracting Co.
P.O. Box 830
Kuwait
Tel: 42 49 10
Cable: VISCOUNT

LUXEMBURG
Medical Only
Hewlett-Packard Benelux
S.A. N.V.
Avenue de Col-Vert, 1
(Groenkraaglaan)
B-1170 Brussels
Tel: (02) 672 22 40
Cable: PALOEN Brussels
Telex: 23 494

MOROCCO
Group
198, Blvd. Branin Roudan
Casablanca
Tel: 25-16-76-25-96-99
Cable: GERP-Casa
Telex: 23739

NETHERLANDS
Hewlett-Packard Benelux N.V.
Van Heuven Goedhartlaan 121
P.O. Box 667
NL-1134 Amstelveen
Tel: (020) 47 20 21
Cable: PALOEN Amsterdam
Telex: 13 216 hepa nl

MINNESOTA
2400 N. Prior Ave
St. Paul 55113
Tel: (612) 636-0700

MISSISSIPPI
"Jackson"
Medical Service Only
Tel: (601) 982-9363

MISSOURI
11331 Colostate Ave
Kansas City 64137
Tel: (816) 763-8000
TWX 910-771-2087

NEBRASKA
Medical Only
7171 Mercy Road
Suite 101
Omaha 68106
Tel: (402) 392-8948

NEW JERSEY
W. 120 Century Rd
Paramus 07652
Tel: (201) 265-5000
TWX 710-990-4951

NEW JERSEY
Crystal Brook Professional
Building
Eatontown 07724
Tel: (201) 542-1394

NEW MEXICO
P.O. Box 11632
Stations E
11300 Lomas Blvd., N.E.
Albuquerque 87123
Tel: (505) 252-1330
TWX 910-989-1185

NORWAY
Hewlett-Packard Norge A/S
Nesveien 13
NO-149
N-1344 Hestum
Tel: (02) 83 83 60
Telex: 16621 hpnas n

POLAND
Biuro Informacji Technicznej
Hewlett-Packard
(1) Slawki 2, 6P
00-950 Warszawa
Tel: 395867-3351-67
Telex: 81 24 53 hepa pl

PORTUGAL
Telecira-Empresa Técnica de
Equipamentos Eléctricos S a r l
Rua Rodrigo da Fonseca 103
P.O. Box 2531
P.Lisbon 1
Tel: (59) 68 60 72
Cable: TELECTRA Lisbon
Telex: 12598

ROMANIA
Hewlett-Packard Reprezentanta
B.M. Balcescu 16
Bucharest
Tel: 158023 138855
Telex: 10440

RUSSIA
Inter-Cambio Mundial de Comercio
S a r l
Av. A de Aguiar 138
P.O. Box 2761
P.Lisbon
Tel: (01) 261 31 37
Cable: INTERCAMBIO Lisbon

SAUDI ARABIA
Modern Electronic Establishment
King Abdul Aziz Str. (Head office)
P.O. Box 1228
Jeddah
Tel: 31173-332201
Cable: ELECTRA
P.O. Box 2728 (Service center)
Riyadh
Tel: 62596-66232
Cable: RAOUFCG

SPAIN
Hewlett-Packard Española S.A.
Jerez No. 3
E-Madrid 16
Tel: (1) 458 26 00 (10 lines)
Telex: 23515 hpa es

SWITZERLAND
Hewlett-Packard (Schweiz) AG
Zürcherstrasse 20
CH-1219 Le Lignon-Geneva
Tel: (022) 96 03 22
Cable: HEWPAKAG Geneva
Telex: 27 333 hpag ch

SYRIA
Medical-Calculator only
Sawah & Co
Place Arna
B.P. 2308
SYR-Damascus
Tel: 16367, 19697, 14260
Cable: SAWAH, Damascus

TURKEY
Teknik Engineering Bureau
P.O. Box 437
Beyhulu
IR-Istanbul
Tel: 49 40 40
Cable: TELEMATON Istanbul
Telex: 23609

UNITED KINGDOM
Hewlett-Packard Ltd
King Street Lane
GB-Winnerish, Wokingham
Berks, RG31 5AR
Tel: (0734) 78 47 74
Cable: Hewlett London
Telex: 847178 S

UNITED KINGDOM
Hewlett-Packard Ltd
Tadgall House
Navigation Road
Atrincham
Cheshire WA14 1NU
Tel: (061) 926 6422
Cable: Hewlett Manchester
Telex: 689068

UNITED KINGDOM
Hewlett-Packard Ltd
Lygon Court
Hereford Road
Droley Road
Halesowen
Tel: (0222) 35 16 23 to 27
Cable: HEWPAK Vienna
Telex: 75923 hewpak a

UNITED KINGDOM
Hewlett-Packard Ltd
Lygon Court
Hereford Road
Droley Road
Halesowen
Tel: (021) 550 9911
Telex: 339105

UNITED KINGDOM
Hewlett-Packard Ltd
Lygon Court
Hereford Road
Droley Road
Halesowen
Tel: (021) 550 9911
Telex: 339105

UNITED KINGDOM
Hewlett-Packard Ltd
Lygon Court
Hereford Road
Droley Road
Halesowen
Tel: (021) 550 9911
Telex: 339105

UNITED KINGDOM
Hewlett-Packard Ltd
Lygon Court
Hereford Road
Droley Road
Halesowen
Tel: (021) 550 9911
Telex: 339105

UNITED KINGDOM
Hewlett-Packard Ltd
Lygon Court
Hereford Road
Droley Road
Halesowen
Tel: (021) 550 9911
Telex: 339105

UNITED KINGDOM
Hewlett-Packard Ltd
Lygon Court
Hereford Road
Droley Road
Halesowen
Tel: (021) 550 9911
Telex: 339105

UNITED KINGDOM
Hewlett-Packard Ltd
Lygon Court
Hereford Road
Droley Road
Halesowen
Tel: (021) 550 9911
Telex: 339105

UNITED KINGDOM
Hewlett-Packard Ltd
Lygon Court
Hereford Road
Droley Road
Halesowen
Tel: (021) 550 9911
Telex: 339105

UNITED KINGDOM
Hewlett-Packard Ltd
Lygon Court
Hereford Road
Droley Road
Halesowen
Tel: (021) 550 9911
Telex: 339105

UNITED KINGDOM
Hewlett-Packard Ltd
Lygon Court
Hereford Road
Droley Road
Halesowen
Tel: (021) 550 9911
Telex: 339105

UNITED KINGDOM
Hewlett-Packard Ltd
Lygon Court
Hereford Road
Droley Road
Halesowen
Tel: (021) 550 9911
Telex: 339105

UNITED KINGDOM
Hewlett-Packard Ltd
Lygon Court
Hereford Road
Droley Road
Halesowen
Tel: (021) 550 9911
Telex: 339105

UNITED KINGDOM
Hewlett-Packard Ltd
Lygon Court
Hereford Road
Droley Road
Halesowen
Tel: (021) 550 9911
Telex: 339105

UNITED KINGDOM
Hewlett-Packard Ltd
Lygon Court
Hereford Road
Droley Road
Halesowen
Tel: (021) 550 9911
Telex: 339105

UNITED KINGDOM
Hewlett-Packard Ltd
Lygon Court
Hereford Road
Droley Road
Halesowen
Tel: (021) 550 9911
Telex: 339105

UNITED KINGDOM
Hewlett-Packard Ltd
Lygon Court
Hereford Road
Droley Road
Halesowen
Tel: (021) 550 9911
Telex: 339105

UNITED KINGDOM
Hewlett-Packard Ltd
Lygon Court
Hereford Road
Droley Road
Halesowen
Tel: (021) 550 9911
Telex: 339105

UNITED KINGDOM
Hewlett-Packard Ltd
Lygon Court
Hereford Road
Droley Road
Halesowen
Tel: (021) 550 9911
Telex: 339105

UNITED KINGDOM
Hewlett-Packard Ltd
Lygon Court
Hereford Road
Droley Road
Halesowen
Tel: (021) 550 9911
Telex: 339105

UNITED KINGDOM
Hewlett-Packard Ltd
Lygon Court
Hereford Road
Droley Road
Halesowen
Tel: (021) 550 9911
Telex: 339105

UNITED KINGDOM
Hewlett-Packard Ltd
Lygon Court
Hereford Road
Droley Road
Halesowen
Tel: (021) 550 9911
Telex: 339105

UNITED KINGDOM
Hewlett-Packard Ltd
Lygon Court
Hereford Road
Droley Road
Halesowen
Tel: (021) 550 9911
Telex: 339105

UNITED KINGDOM
Hewlett-Packard Ltd
Lygon Court
Hereford Road
Droley Road
Halesowen
Tel: (021) 550 9911
Telex: 339105

UNITED KINGDOM
Hewlett-Packard Ltd
Lygon Court
Hereford Road
Droley Road
Halesowen
Tel: (021) 550 9911
Telex: 339105

UNITED KINGDOM
Hewlett-Packard Ltd
Lygon Court
Hereford Road
Droley Road
Halesowen
Tel: (021) 550 9911
Telex: 339105

UNITED KINGDOM
Hewlett-Packard Ltd
Lygon Court
Hereford Road
Droley Road
Halesowen
Tel: (021) 550 9911
Telex: 339105

UNITED KINGDOM
Hewlett-Packard Ltd
Lygon Court
Hereford Road
Droley Road
Halesowen
Tel: (021) 550 9911
Telex: 339105

UNITED KINGDOM
Hewlett-Packard Ltd
Lygon Court
Hereford Road
Droley Road
Halesowen
Tel: (021) 550 9911
Telex: 339105

UNITED KINGDOM
Hewlett-Packard Ltd
Lygon Court
Hereford Road
Droley Road
Halesowen
Tel: (021) 550 9911
Telex: 339105

UNITED KINGDOM
Hewlett-Packard Ltd
Lygon Court
Hereford Road
Droley Road
Halesowen
Tel: (021) 550 9911
Telex: 339105

UNITED KINGDOM
Hewlett-Packard Ltd
Lygon Court
Hereford Road
Droley Road
Halesowen
Tel: (021) 550 9911
Telex: 339105

UNITED KINGDOM
Hewlett-Packard Ltd
Lygon Court
Hereford Road
Droley Road
Halesowen
Tel: (021) 550 9911
Telex: 339105

UNITED KINGDOM
Hewlett-Packard Ltd
Lygon Court
Hereford Road
Droley Road
Halesowen
Tel: (021) 550 9911
Telex: 339105

UNITED KINGDOM
Hewlett-Packard Ltd
Lygon Court
Hereford Road
Droley Road
Halesowen
Tel: (021) 550 9911
Telex: 339105

UNITED KINGDOM
Hewlett-Packard Ltd
Lygon Court
Hereford Road
Droley Road
Halesowen
Tel: (021) 550 9911
Telex: 339105

UNITED KINGDOM
Hewlett-Packard Ltd
Lygon Court
Hereford Road
Droley Road
Halesowen
Tel: (021) 550 9911
Telex: 339105

UNITED KINGDOM
Hewlett-Packard Ltd
Lygon Court
Hereford Road
Droley Road
Halesowen
Tel: (021) 550 9911
Telex: 339105

UNITED KINGDOM
Hewlett-Packard Ltd
Lygon Court
Hereford Road
Droley Road
Halesowen
Tel: (021) 550 9911
Telex: 339105

UNITED STATES

ALABAMA
8290 Whitesburg Dr. S.E.
P.O. Box 4207
Huntsville 35802
Tel: (205) 881-4591

ARIZONA
2336 E. Marmonia St
Phoenix 85034
Tel: (602) 244-1361

ARIZONA
2424 East Aragon Rd
Tucson 85706
Tel: (602) 294-3148

ARKANSAS
Medical Service Only
P.O. Box 5646
Biody Station
Little Rock 72205
Tel: (501) 376-1844

CALIFORNIA
1430 East Orangehorpe Ave
Fullerton 92631
Tel: (714) 670-1000

BUSINESS REPLY MAIL

NO POSTAGE STAMP NECESSARY IF MAILED IN THE UNITED STATES

POSTAGE WILL BE PAID BY

HEWLETT-PACKARD
CALCULATOR PRODUCTS DIVISION
POST OFFICE BOX 301
LOVELAND, COLORADO 80537 U.S.A.

ATTN: Calculator Customer Support

FIRST CLASS
PERMIT NO. 37
LOVELAND, COLO.

