

# **Agilent M9099 Waveform Creator 1.0**



## **Startup Guide**

## Notices

© Agilent Technologies, Inc. 2013

No part of this manual may be reproduced in any form or by any means (including electronic storage and retrieval or translation into a foreign language) without prior agreement and written consent from Agilent Technologies, Inc. as governed by United States and international copyright laws.

## Manual Part Number

M9099-90001

## Edition

September 2013

Printed in USA

## Warranty

**The material contained in this document is provided "as is," and is subject to being changed, without notice, in future editions. Further, to the maximum extent permitted by applicable law, Agilent disclaims all warranties, either express or implied, with regard to this manual and any information contained herein, including but not limited to the implied warranties of merchantability and fitness for a particular purpose. Agilent shall not be liable for errors or for incidental or consequential damages in connection with the furnishing, use, or performance of this document or of any information contained herein. Should Agilent and the user have a separate written agreement with warranty terms covering the material in this document that conflict with these terms, the warranty terms in the separate agreement shall control.**

## Technology Licenses

The hardware and/or software described in this document are furnished under a license and may be used or copied only in accordance with the terms of such license.

## Restricted Rights

### Legend

If software is for use in the performance of a U.S. Government prime contract or subcontract, Software is delivered and licensed as "Commercial computer software" as defined in DFAR 252.227-7014 (June 1995), or as a "commercial item" as defined in FAR 2.101(a) or as "Restricted computer software" as defined in FAR 52.227-19 (June 1987) or any equivalent agency regulation or contract clause. Use, duplication or disclosure of Software is subject to Agilent Technologies' standard commercial license terms, and non-DOD Departments and Agencies of the U.S. Government will receive no greater than Restricted Rights as defined in FAR 52.227-19(c)(1-2) (June 1987). U.S. Government users will receive no greater than Limited Rights as defined in FAR 52.227-14 (June 1987) or DFAR 252.227-7015 (b)(2) (November 1995), as applicable in any technical data.

## Safety Notices

### CAUTION

A **CAUTION** notice denotes a hazard. It calls attention to an operating procedure, practice, or the like that, if not correctly performed or adhered to, could result in damage to the product or loss of important data. Do not proceed beyond a **CAUTION** notice until the indicated conditions are fully understood and met.

### WARNING

A **WARNING** notice denotes a hazard. It calls attention to an operating procedure, practice, or the like that, if not correctly performed or adhered to, could result in personal injury or death. Do not proceed beyond a **WARNING** notice until the indicated conditions are fully understood and met.

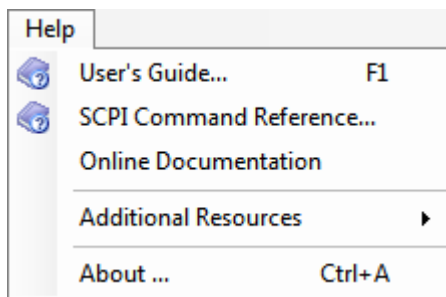
## Table of Contents

<b>Preface</b> .....	<b>2</b>
<b>1. Introduction</b> .....	<b>2</b>
1.1. Related Documentation.....	3
<b>2. System Requirements</b> .....	<b>6</b>
2.1. Summary of Software/Hardware Compatibility with Waveform Creator.....	6
<b>3. Installing Waveform Creator</b> .....	<b>7</b>
3.1. Pre-requisites.....	7
3.2. Obtain Waveform Creator Executable.....	7
3.3. Install Waveform Creator Core .....	7
3.4. Install Plug-ins.....	8
<b>4. Setting Up Licenses</b> .....	<b>9</b>
4.1. Agilent Software Licensing .....	9
4.2. Waveform Creator Licenses .....	10
<b>5. Quick Start</b> .....	<b>12</b>
5.1. Configure the System .....	12
5.2. Create a Simple Waveform.....	12
5.3. Download the Waveform .....	13
5.3.1. M9381A VSG.....	13
5.3.2. Connect the M9099 Waveform Creator to the M9381A Vector Signal Generator .....	13
5.3.3. Generate Output.....	14
5.3.4. Data File Write.....	14

# Preface

This scope of the startup guide is to introduce you to Waveform Creator software and describe the process of Installing and licensing the product. It also enclose details on how to quickly get started with the software.

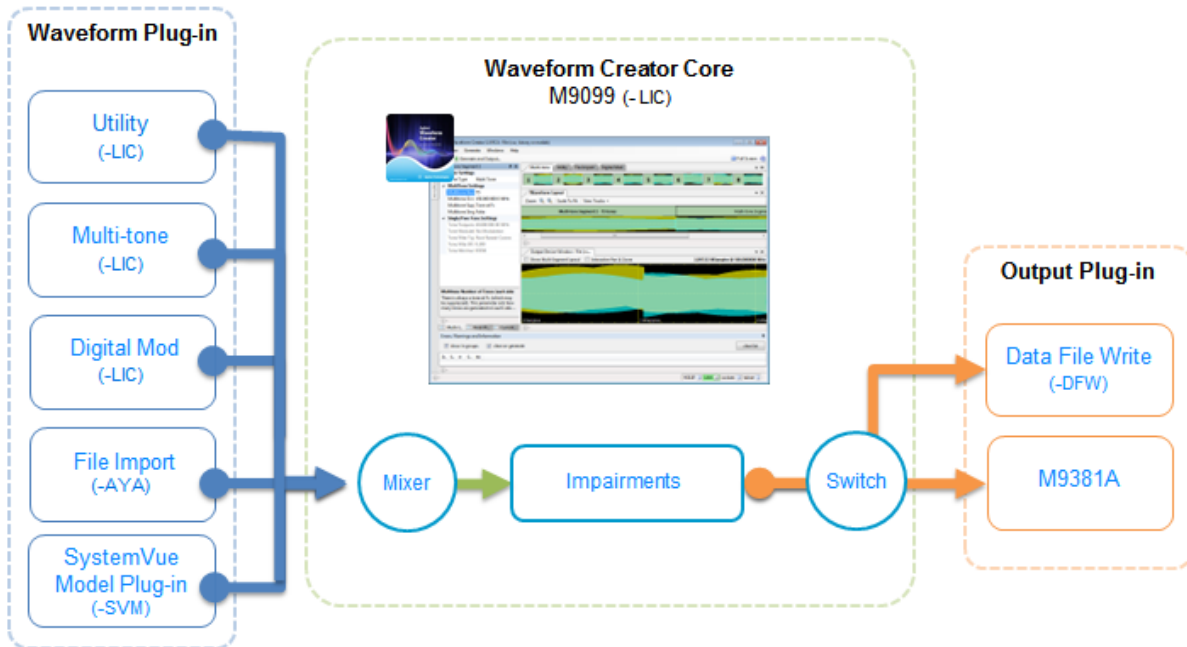
To access M9099 Waveform Creator help, Launch the Product and Click **Help > User's Guide**.



## 1. Introduction

M9099 Waveform Creator provides a modular and flexible waveform creation environment supporting analog and digital modulation formats for the [Agilent M9381A Vector Signal Generator](#) for R&D, design validation, and test engineers who need to create and manage custom waveforms for wireless and high speed wireline product design & testing.

Waveform Creator provides a simple, easy, & modular SW framework for creating, combining & managing custom, arbitrary waveforms, with support for corrected waveform download to Agilent AWGs and Signal Generators. It accelerates design validation and testing of chips, modules, and systems by streamlining development and management of custom stimulus waveforms.



Waveform Creator provides various benefits out of the box:

- Flexible waveform creation and generation capability for Agilent M9381 PXI VSG.
- Standard waveform plug-ins for general-purpose waveform creation.
- Optional waveform creation plug-in for basic digital modulation (-AYA).
- Optional waveform creation plug-in for SystemVue simulation models.
- Optional waveform generation plug-in (-DFW) for writing unencrypted waveform files (CSV, MAT, M9381A and BIN).
- User extendable functionality such as creating your own waveform input plug-ins.
- SCPI remote control for test automation.

## 1.1. Related Documentation

To access documentation related to M9099 Waveform Creator, click the links below to open the related document.

Document	Description	Help Link/Location	Format
Startup Guide	This guide includes quick install and license setup instructions with a instructions to	<a href="http://cp.literature.agilent.com/litweb/pdf/M9099-90001.pdf">http://cp.literature.agilent.com/litweb/pdf/M9099-90001.pdf</a>	PDF

Document	Description	Help Link/Location	Format
	quickly get started with Waveform Creator		
M9099 Waveform Creator Help	This help includes Waveform Creator Core GUI and supported Plug-in's documentation	<p><b>32-bit</b> - <i>C:\Program Files\Agilent\M9099 Waveform Creator\Documentation\WaveformCreator.chm</i></p> <p><b>64-bit</b> - <i>C:\Program Files(x86)\Agilent\M9099 Waveform Creator\Documentation\WaveformCreator.chm</i></p>	(Microsoft Help Format) CHM
SCPI Reference Manual	This manual includes descriptions and details of SCPI commands supported in Waveform Creator	<p><b>32-bit</b> - <i>C:\Program Files\Agilent\M9099 Waveform Creator\Documentation\SCPI Command Reference.html</i></p> <p><b>64-bit</b> - <i>C:\Program Files(x86)\Agilent\M9099 Waveform Creator\Documentation\SCPI Command Reference.html</i></p>	HTML
Agilent License Manager Help	This help file provides information on Agilent Licensing	<p><b>32-bit</b> - <i>C:\Program Files\Agilent\Agilent License Manager\AgilentLicenseManager.chm</i></p> <p><b>64-bit</b> - <i>C:\Program Files(x86)\Agilent\Agilent License Manager\AgilentLicenseManager.chm</i></p>	(Microsoft Help Format) CHM

Document	Description	Help Link/Location	Format
		<p><i>nseManager.chm</i></p> <p>Alternatively, you can find help under: <b>Start &gt; All Programs &gt; Agilent License Manager &gt; &lt;product_name&gt;</b></p>	
Agilent I/O Libraries Help	This help file provides information on Agilent I/O libraries	<p><b>32-bit</b> - <i>C:\Program Files\Agilent\I/O Libraries Suite\VisaCom.chm</i></p> <p><b>64-bit</b> - <i>C:\Program Files(x86)\Agilent\I/O Libraries Suite\VisaCom.chm</i></p>	(Microsoft Help Format) CHM
SystemVue Help	This is online version of SystemVue software help	<a href="http://www.agilent.com/find/eesof-systemvue-documentation">http://www.agilent.com/find/eesof-systemvue-documentation</a>	Web

For more information, visit:

- Product Documentation on the web: <http://www.agilent.com/find/modular-m9099-docs>.
- KC for Waveform Creator: <http://www.agilent.com/find/modular-wfc-knowledge> .
- KC for Modular Solutions: <http://www.agilent.com/find/modular-knowledgecenter>.

## 2. System Requirements

Following are Agilent recommended configurations:

<b>CPU</b>	2 GHz or faster 32-bit (x86) or 64-bit (x64) processor
<b>RAM</b>	2 GB recommended (32-bit) / 4 GB recommended (64-bit)
<b>Video RAM</b>	512 MB recommended
<b>Hard Disk</b>	1 GB available
<b>Additional Drives</b>	DVD to load software; license transfer requires network access, USB Flash drive, USB hard drive, or USB DVD drive
<b>Operating System</b>	<ul style="list-style-type: none"> <li>• Microsoft Windows® 7 Professional, Enterprise, or Ultimate (64-bit/32-bit)</li> <li>• Microsoft Windows® XP Professional SP3 (32-bit)</li> </ul>

### 2.1. Summary of Software/Hardware Compatibility with Waveform Creator

<b>Agilent IO Libraries Suite</b>	Ensure that you have Agilent IO Libraries Suite 16.3 or higher installed on your system. The Agilent IO Libraries Suite can be found on the CD that is part of shipment content or at <a href="http://www.agilent.com/find/iosuite">http://www.agilent.com/find/iosuite</a> .
<b>VSA for pre-corrections filter calibration</b>	If you wish to use the optional pre-corrections filter calibration capability, you also need Agilent 89601B VSA version 15 or higher installed on your system.
<b>M9381A VSG/CW Source Instrument Drivers</b>	Install M9381A VSG Drivers from <a href="http://www.agilent.com/find/M9381A">http://www.agilent.com/find/M9381A</a> Please install M9381A driver version 1.1.199.3 or higher.
<b>SystemVue Software</b>	To use SystemVue Model Plug-in, please install <a href="#">SystemVue software 2013.08</a> release.



## 3. Installing Waveform Creator

Follow the given steps to get the executable and install Agilent M9099 Waveform Creator software (core and plug-ins) on your system.

### 3.1. Pre-requisites

A host PC with [Agilent IO Libraries Suite](#) software correctly installed:  
For more details, refer to Summary of Software/Hardware Compatibility with Waveform Creator section under [System Requirements](#).

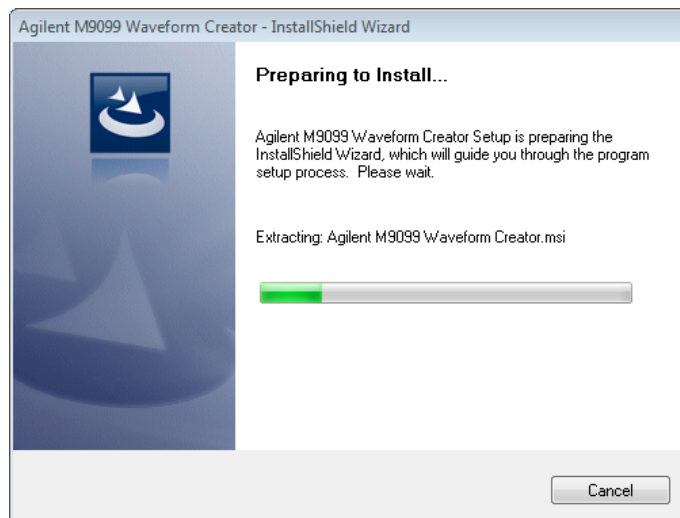
### 3.2. Obtain Waveform Creator Executable

Obtain the Waveform Creator executable from the following sources:

- [A.com](#)
- CD-ROM (Product ordered with -MED option)

### 3.3. Install Waveform Creator Core

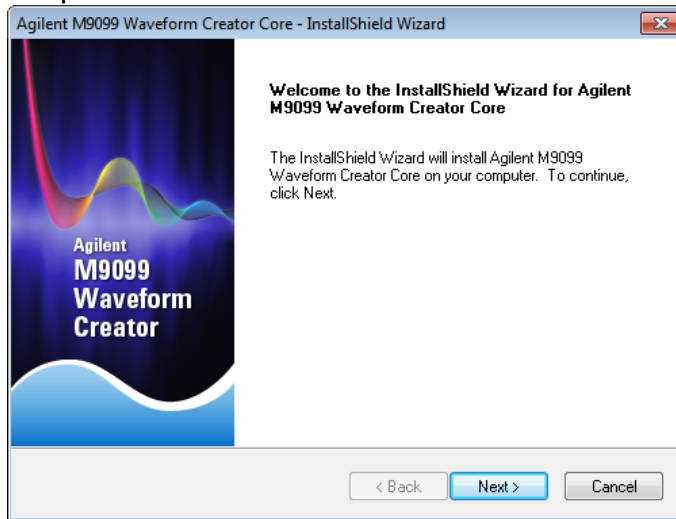
1. Double-click the executable (*Agilent M9099 Setup.exe*) to run the Waveform Creator setup. The following screen appears:



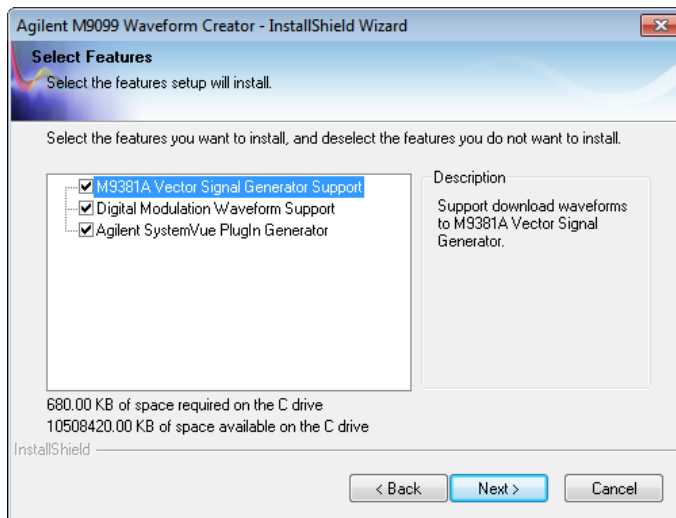
2. Follow the guided tour to complete the installation.

### 3.4. Install Plug-ins

1. The InstallShield Wizard installs the Agilent M9099 Waveform Creator plug-in on your computer.



2. Click **Next** to continue.



3. Select the features you want to install and click **Next** to install in the default folder.
4. Follow the guided tour to complete the installation

**Note**


If you do not have the Agilent M938x Instrument Driver Version 1.1.199.3 or later installed on your system, download the same from <http://www.agilent.com/find/adnivicomdrivers>.

## 4. Setting Up Licenses

This section describes Agilent software licensing and the licenses required to run the Agilent Waveform Creator software.

### 4.1. Agilent Software Licensing

The Waveform Creator software supports Node-Locked licensing type.

For more details on different license types and setup, launch **Agilent License Manager** from **Start > All Programs > Agilent License Manager** or by clicking  from system tray.

When you purchase Waveform Creator, you are provided with a License Redemption Entitlement Certificate that documents the options to which you are entitled. You can redeem the certificate at <http://www.agilent.com/find/softwaremanager> using the purchase order number, entitlement certificate number, and other details to run the software.

The Agilent Software Licensing system issues a license file for each purchased option, by e-mail, to an address you specify. Each license file is a plain text file attachment with a file name in the form *XXXXXX\_YYYYYY.lic*.

When you receive the e-mail, you should save the attached .lic file(s) to the Agilent license directory, which is, by default, located at *C:\Program Files\Agilent\licensing*.

**Note**

You can check the status of your software licenses by running the optional Agilent License Manager or by selecting **Help > About...** from the Waveform Creator menu and then selecting the Licenses tab in the About dialog.

If a license is not available or not valid, the corresponding features will not be enabled by the Agilent Waveform Creator.

## 4.2. Waveform Creator Licenses

### Agilent Waveform Creator Software Options

Product-Option	*Feature	Version*	Description
M9099T			Waveform Creator (Transportable Perpetual License)
M9099T-LIC	M9099_CS_CoreSoftware	1.000	Core product w/ Utility & Multi-tone plug-in licenses (Required)
M9099T-AYA	M9099_Wp_DigMod	1.000	Digital Modulation Library plug-in license
M9099T-DFW	M9099_Dp_DataFile Write	1.000	Unencrypted Data File Write plug-in License
M9099T-SVM	M9099_Wp_SystemVue	1.000	SystemVue Model plug-in license (requires SystemVue software)

**Waveform Creator Trial licenses**

<b>Product-Option</b>	<b>Feature</b>	<b>Version</b>	<b>Description</b>
M9099T-LIC-TRL	M9099_CS_CoreSoftware	1.000	Waveform Creator core software (Trial)
M9099T-AYA-TRL	M9099_Wp_DigMod	1.000	Digital Modulation Plug-in (Trial)
M9099T-SVM-TRL	M9099_Wp_SystemVue	1.000	SystemVue Model Plug-in (Trial)

**Waveform Creator Support licenses**

<b>Product-Option</b>	<b>Feature</b>	<b>Version</b>	<b>Description</b>
M9099T-LIC-12M		1.000	Waveform Creator, Core Software, Premium Support Plan (1-year)
M9099T-AYA-12M		1.000	Waveform Creator Digital Modulation, Premium Support Plan (1-year)
M9099T-DFW-12M		1.000	Waveform Creator Data File Write, Premium Support Plan (1-year)
M9099T-SVM-12M		1.000	Waveform Creator SystemVue Model, Premium Support Plan (1-year)

## 5. Quick Start

This section introduces a typical Waveform Creator workflow. You will create a test modulation in M9099 Waveform Creator, download it to the M9381A Vector Signal Generator (VSG), and verify the resulting RF signal using the N9020A MXA Signal Analyzer.

This should be sufficient to get you familiar with the basic workflow.

- [Configure the System](#)
- [Create a Simple Waveform](#)
- [Download the Waveform](#)

### 5.1. Configure the System

Refer to [System Requirements](#)

### 5.2. Create a Simple Waveform

Waveforms are created by dragging and dropping waveform segments from the active Segment Library window into the Waveform Layout window. Once the desired sequence of waveform segments is achieved, the composite waveform, including any added noise or other impairments, can be reviewed in the Output Device window.

Follow these steps to create a simple waveform:

1. Run the M9099 Waveform Creator software.
2. Select the Multi-tone Segment Library tab.
3. Drag and drop Segment 1 from the Segment Library window into the Waveform Layout window by selecting the colored box numbered 1.  
The Multi-tone Segment 1 panel appears on the left.
4. Change the segment 1 settings to the following (leave all others at their default values):
  - a. Tone Type: Single Tone
  - b. Tone Frequency: 60.00 MHz
  - c. Tone Modulation Symbol Rate: 10.00 MHz
  - d. Tone Modulation Type: 16 QAM

- e. Tone Filter Type: Root Raised-Cosine
- f. Tone Filter BT/Shape: 0.300
- g. Tone Minimum Length: 65536

**Note**

Waveforms can also be imported in the form of CSV HDF and BIN file format using File Import plug-in. To import:

1. In the File Import Segment, under **Main Settings**, set the **Waveform Type** to "From XXX File", where XXX=CSV, BIN or HDF.
2. Specify the **Waveform File Name** under **Segment Settings** to import the desired file.

### 5.3. Download the Waveform

Generated waveforms using Waveform Creator can be downloaded either to an output device like M9381A or File (csv, matlab or binary format).

#### 5.3.1. M9381A VSG

To download waveform on an M9381A VSG:

1. [Connect the M9099 Waveform Creator to the M9381A Vector Signal Generator](#)
2. Run M9099 software
3. [Generate Output](#)

#### 5.3.2. Connect the M9099 Waveform Creator to the M9381A Vector Signal Generator

The Agilent M9381A VSG hardware comprises four interconnected PXIe modules, typically hosted in an Agilent M9018A PXIe chassis. These modules must be controlled over the PXIe bus by the M9381A instrument driver in order to deliver the product functionality. The driver may be hosted by an embedded controller PC in the same PXIe chassis, or by an external laptop or desktop PC whose PCIe backplane has been extended (by adapters and cable) onto the backplane of the PXIe chassis. The possible configurations are fully described in the *Agilent M9381A Configuration Guide (5991-0897EN)*.

Once the M9381A hardware is configured and the M938x VSG/CW Source Instrument Driver is installed, other applications (such as M9099) may communicate with the M9381A by means of IVI-COM driver calls to the VISA PXI address assigned to the M9381A in the Agilent IO Libraries Suite.

### 5.3.3. Generate Output

To generate output:

1. Select **Generate > Output Device > Agilent M9381A VSG** to select the output device.
2. Select the Current Output Device Settings window and change the device settings to the following (leave all other parameters at their default values):
  - a. Instrument Address: <VISA string from Agilent IO Libraries>
  - b. Frequency: 1.5 GHz
  - c. Amplitude: 0 dBm
  - d. RF On: True
3. Click the Generate and Output button in the [tool bar](#) to send the created waveform to M9381A VSG.

If you have no M9381A hardware installed (and therefore have no address to enter), you can still explore the software functionality by changing the M9381A output device setting Simulation to **True**. In this mode, Settings changes and waveform downloads will appear to work, but the changes and data are simply discarded by the M9381A driver.

For more details on M9381A Output plug-in settings, refer to [M9381A Output Plug-in](#).

### 5.3.4. Data File Write

Waveform Creator allows you to save the output waveform to a file in either of the following formats:

- CSV (comma separated)
- N5110A waveform (\*.bin)
- MATLAB® Level 5 MAT-File

To download waveform to a file:

1. Select **Generate > Output Device > \*File (csv, binary or matlab)**.
2. Set the parameter values



3. Click the Generate and Output button in the [tool bar](#) to save the output to a file on the host computer.

For file data, the maximum sample rate is not limited by hardware, so for internal coding purposes a nominal limit of 5 GHz is set. Within this limit, the auto sample rate algorithm chooses the most appropriate sample rate for the generated waveform. If a higher sample rate is needed, then this nominal limit can be over-ruled by using the manual sample rate setting.

The output files are unencrypted and can be formatted in various ways to facilitate their import into other Agilent and non-Agilent tools.

For more details on File settings, refer to [Data File Write Plug-in](#).

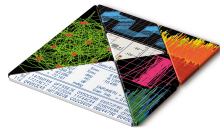
**Note**

Output to all supported Agilent VSG is standard as part of Waveform Creator functionality but file output is separately licensed as Waveform Creator option DFW.



## The Modular Tangram

The four-sided geometric symbol that appears in Agilent modular product literature is called a tangram. The goal of this seven-piece puzzle is to create shapes—from simple to complex. As with a tangram, the possibilities may seem infinite as you begin to create a new test system. With a set of clearly defined elements—hardware, software—Agilent can help you create the system you need, from simple to complex.



**DISCOVER** the Alternatives ...

... Agilent **MODULAR** Products



**Agilent Advantage Services** is committed to your success throughout your equipment's lifetime.  
[www.agilent.com/find/advantageservices](http://www.agilent.com/find/advantageservices)



**Agilent Email Updates** keep you informed on the latest product, support and application information.  
[www.agilent.com/find/emailupdates](http://www.agilent.com/find/emailupdates)



**Agilent Channel Partners** provide sales and solutions support. For details, see  
[www.agilent.com/find/channelpartners](http://www.agilent.com/find/channelpartners)



ISO 9001:2008 certified. For details, see  
[www.agilent.com/quality](http://www.agilent.com/quality)



PICMG and the PICMG logo, CompactPCI and the CompactPCI logo, AdvancedTCA and the AdvancedTCA logo are US registered trademarks of the PCI Industrial Computers Manufacturers Group. "PCIe" and "PCI EXPRESS" are registered trademarks and/or service marks of PC-SIG. Microsoft, Windows, Visual Studio, Visual C++, Visual C#, and Visual Basic are either registered trademark or trademarks of Microsoft Corporation.

Product descriptions in this document are subject to change without notice.

© Agilent Technologies, Inc. 2010-2013

[www.agilent.com](http://www.agilent.com)

[www.agilent.com/find/modular](http://www.agilent.com/find/modular)

[www.agilent.com/find/M9099](http://www.agilent.com/find/M9099)

For more information on Agilent Technologies' products, applications or services, please contact your local Agilent office. (For additional listings, go to [www.agilent.com/find/assist](http://www.agilent.com/find/assist).)

### Americas

Canada	(877) 894 4414
Brazil	(11) 4197 3500
Mexico	01800 5064 800
United States	(800) 829 4444

### Asia Pacific

Australia	1 800 629 485
China	800 810 0189
Hong Kong	800 938 693
India	1 800 112 929
Japan	0120 (421) 345
Korea	080 769 0800
Malaysia	1 800 888 848
Singapore	1 800 375 8100
Taiwan	0800 047 866
Thailand	1 800 226 008

### Europe & Middle East

Austria	43 (0) 1 360 277 1571
Belgium	32 (0) 2 404 93 40
Denmark	45 70 13 15 15
Finland	358 (0) 10 855 2100
France	0825 010 700 (0.125 €/minute)
Germany	49 (0) 7031 464 6333
Ireland	1890 924 204
Israel	972 3 9288 504 / 544
Italy	39 02 92 60 8484
Netherlands	31 (0) 20 547 2111
Spain	34 (91) 631 3300
Sweden	0200 88 22 55
Switzerland	0800 80 53 53
United Kingdom	44 (0) 118 9276201



**Agilent Technologies**