



Guide for Windows XP End of Support: ENA

Introduction

As of April 8, 2014 Microsoft has ceased supporting the Windows XP operating system. No further security patches will be delivered by Microsoft beyond this date. This document will help you answer the following questions:

- How do I know if my instrument runs on Windows XP?
- What are the risks of using my instrument connected to a PC or the LAN?
- How do I minimize the risks?
- What do I do if I find an infection I can't remove?

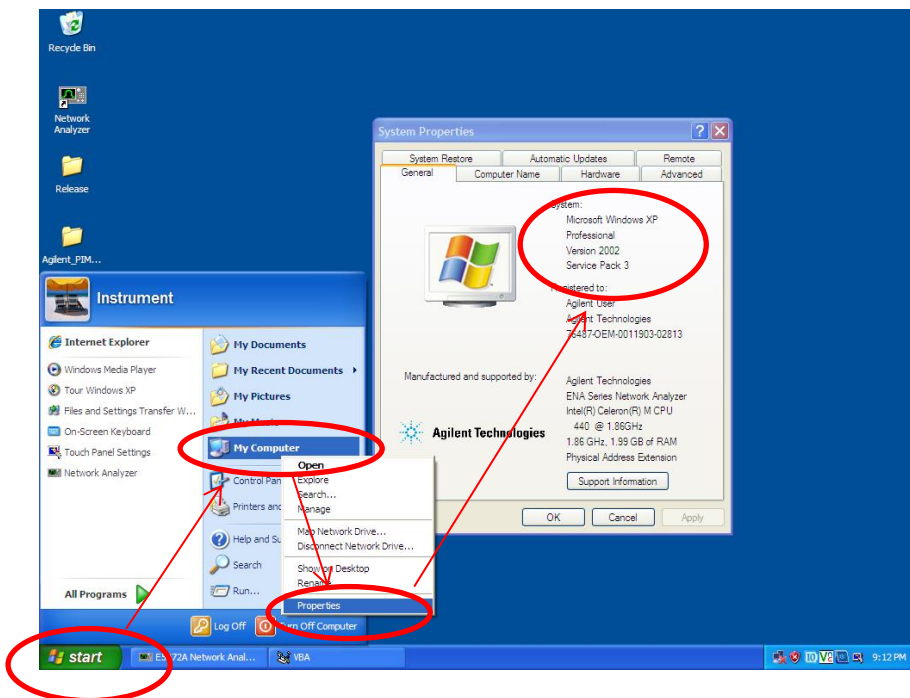
How do I know if my instrument runs on Windows XP?

See the serial-number prefix on the rear panel of the instrument.

Product No	Serial-number prefix for Win-XP
E5061B	MY491 - MY493, SG491 - SG493
E5071C	MY461 - MY464, SG461 - SG464
E5072A	MY511 - MY512, SG511 - SG512

Click Windows start -> Right Click My Computer -> Click Properties

See System Properties





Agilent Technologies

What are the risks of using my instrument connected to a PC or the LAN?

This instrument internally consists of the measurement hardware and it also has a PC built inside which is running Windows XP. Therefore the same rules and precautionary measures that apply to laptop and desktop PCs apply to this instrument as well.

Almost all threats are spread via the internet or via USB thumb drives. If the instrument is connected to an infected thumb drive, PC or to a LAN that is not adequately protected, it may become infected. The instrument can then pass the infection on to other PC's, and/or its speed of operation may be significantly slowed.

How do I minimize the risks?

- **Disconnect the instrument from the LAN.** Disconnecting the instrument from the LAN is the simplest procedure to reduce the risk or to comply with the rules setup by your IT department. Do not disable the LAN ports, as that may affect the licensing mechanism. If you disable the LAN ports in Windows you may lose all licenses.
- **Upgrade to Windows 7.** Our products will continue to function to published specification on Windows XP. Customers needing to make their product Windows 7 compatible will find there is an available option to purchase a Windows XP-to-Windows 7 migration kit through their local Agilent sales office.

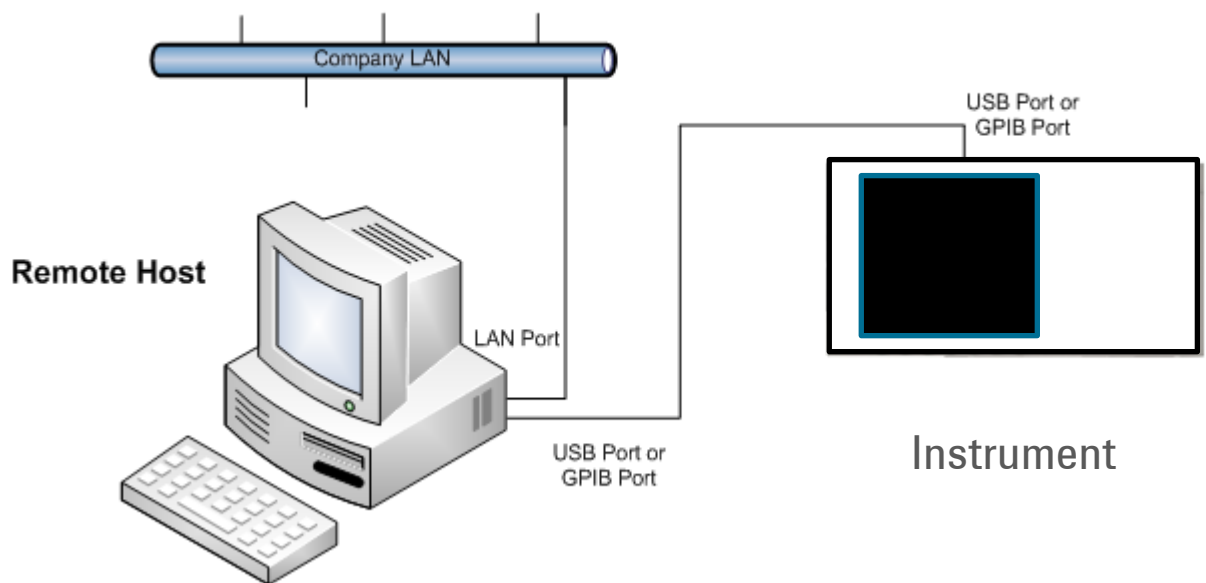
Product No	Upgrade-kit	Order Available Date	Ship Available Date
E5061B	E5061BU-040	June, 2014	July, 2014
E5071C	E5071CU-043 or E5071CU-044	February, 2014	March, 2014
E5072A	E5072AU-040	February, 2015 (tentative)	March, 2015 (Tentative)

- **Keep your antivirus program and definitions up to date.** If your instrument is running an antivirus program for XP, your vendor may continue to provide virus definitions for new threats that emerge.
- **Use sanitized USB or GPIB connectivity for remote programming using a PC.** If you are presently sending commands to the instrument from a remote PC to automate your tests and you are using the LAN port to connect to the instrument please consider the following approach (see diagram). Most of our instrument support 3 different communication interfaces to send commands: USB, GPIB and LAN. The instrument uses a SCPI interface for communicating with the outside world. To communicate with it from a remote computer, the Agilent IO Libraries Suite must be installed on this remote host computer. The Agilent IO libraries are used to connect to the instrument regardless what interface is



Agilent Technologies

used. It may be USB, GPIB or LAN. Successful communication only depends on the correct VISA identification string (destination address). The correct string can be retrieved with help of the Agilent IO Libraries. The whole structure of your program can stay the same and you can reuse them as is. Only the addressing level has to be changed as indicated above.



What do I do if I find an infection I can't remove?

In the case you cannot remove an infection after performing System Recovery, send the instrument to your nearest Agilent service center to replace with a new Hard Disk Drive/Solid State Drive. When the instrument is returned from Agilent service center after repair, do not connect the instrument with LAN or USB device if the root cause of the infection is not removed.