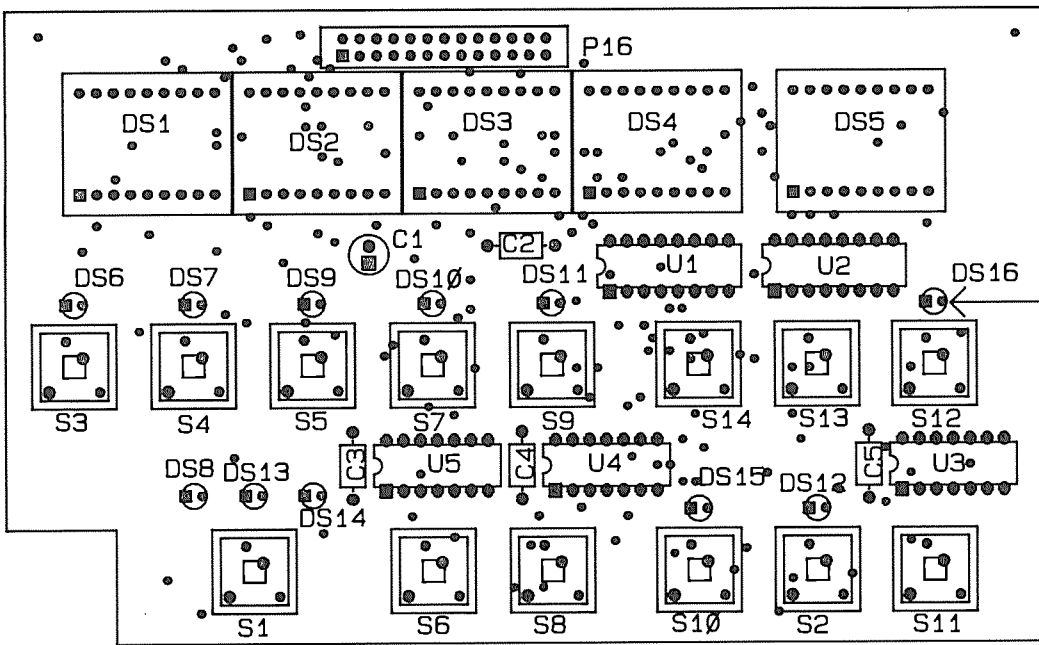


ZONE	LTR.	ECO NO.	REVISION	ENG.	DATE
	B	11243	RELEASED		3-7-86
	C	11584	REVISED	<i>[Signature]</i>	8-5-86

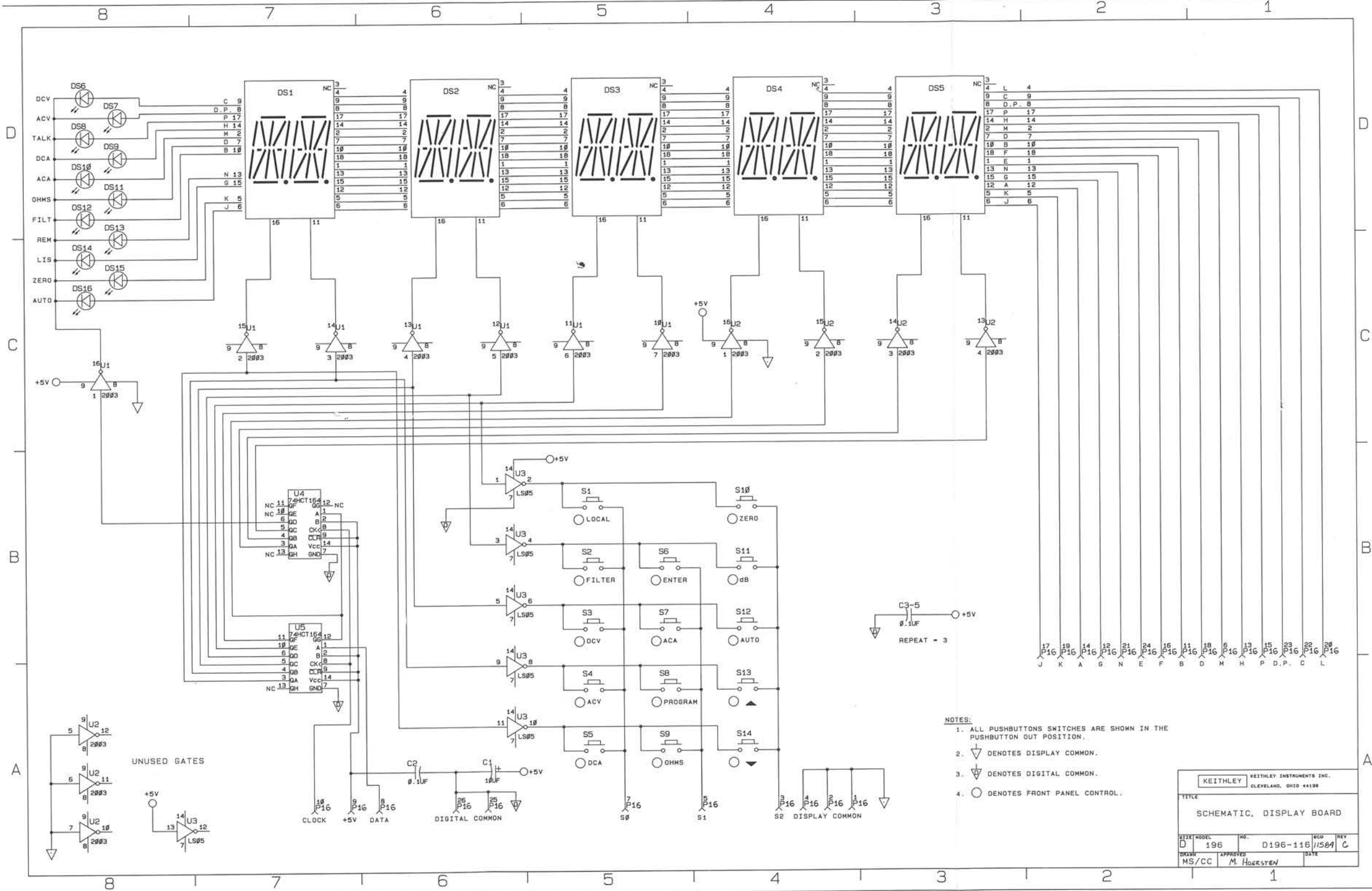


PUSHBUTTON SELECTION CHART	
SCHEMATIC DES.	PART NO.
S1, S3 THRU S9	29465-5
S2, S10 THRU S14	29465-6

INSTALL MK-22-3 MOUNTING KITS UNDER ALL PL-71 PILOT LIGHTS (DS6 THRU DS16) .

NOTE: FOR COMPONENT INFORMATION REFER TO BILL OF MATERIAL #196-000-02.

Figure 7-1. Display Board, Component Location Drawing, Dwg. No. 196-110



- NOTES:
1. ALL PUSHBUTTONS SWITCHES ARE SHOWN IN THE PUSHBUTTON OUT POSITION.
  2. ▽ DENOTES DISPLAY COMMON.
  3. ▽ DENOTES DIGITAL COMMON.
  4. ○ DENOTES FRONT PANEL CONTROL.

KEITHLEY		KEITHLEY INSTRUMENTS INC.	
D		CLEVELAND, OHIO 44138	
TITLE			
SCHEMATIC, DISPLAY BOARD			
SIZE	MODEL	NO.	ECO
D	196	D196-116	11584
DATE	APPROVED	DATE	REV
MS/CC	M. HOERSTEN		C

Figure 7-2. Display Board, Schematic Diagram, Dwg. No. 196-116

ZONE	LTR	EGG NO	REVISION	ENR	DATE
A	11440	00001	2000-01-01	MM	1-3-01
B	11440	00002	2000-01-01	MM	1-3-01
C	11440	00003	2000-01-01	MM	1-3-01
D	11440	00004	2000-01-01	MM	1-3-01
E	11440	00005	2000-01-01	MM	1-3-01
F	11440	00006	2000-01-01	MM	1-3-01
G	11440	00007	2000-01-01	MM	1-3-01
H	11440	00008	2000-01-01	MM	1-3-01

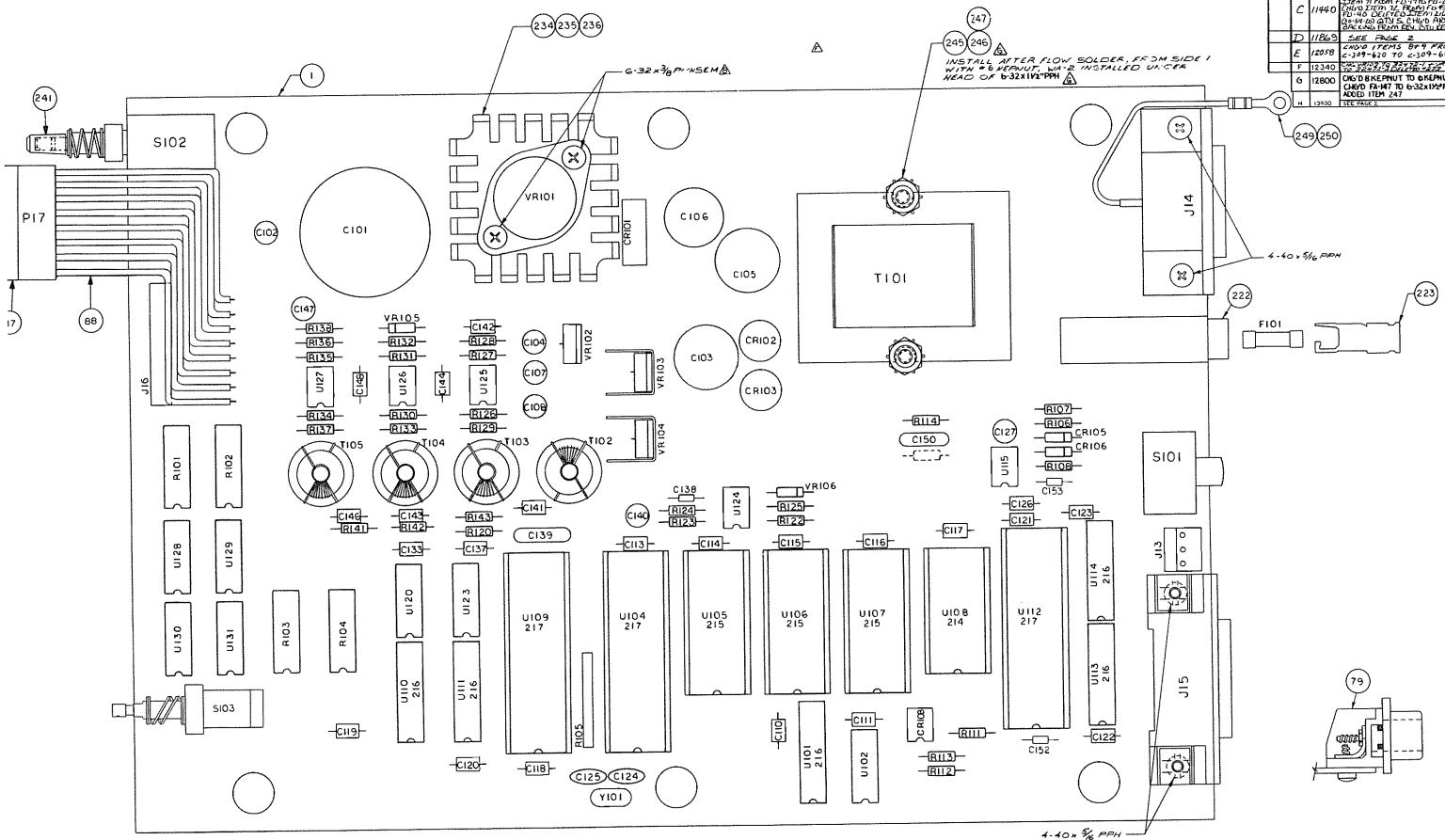
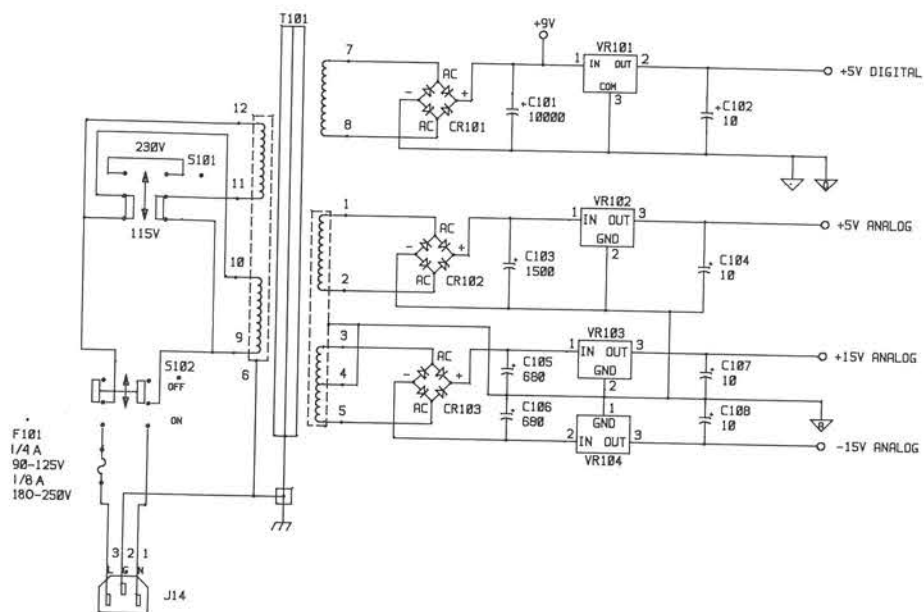


Figure 7-3. Digital Board, Component Location Drawing, Dwg. No. 196-100

ZONE	LINE	EQD NO	REVISION	ENG	DATE
A	11249		RELEASED	MAN	12-27-86
B	11440		SEE PAGE 2	MAN	5-23-88
C	12058		KTSP FOR 316A TO 116A FROM 116A TO 116A	MAN	4/18/87
D	13700		CHGD. FID FROM 316A TO 116A AND 116A TO 116A	MAN	2-21-90
DI	14759		SEE PAGE THREE		12-5-91



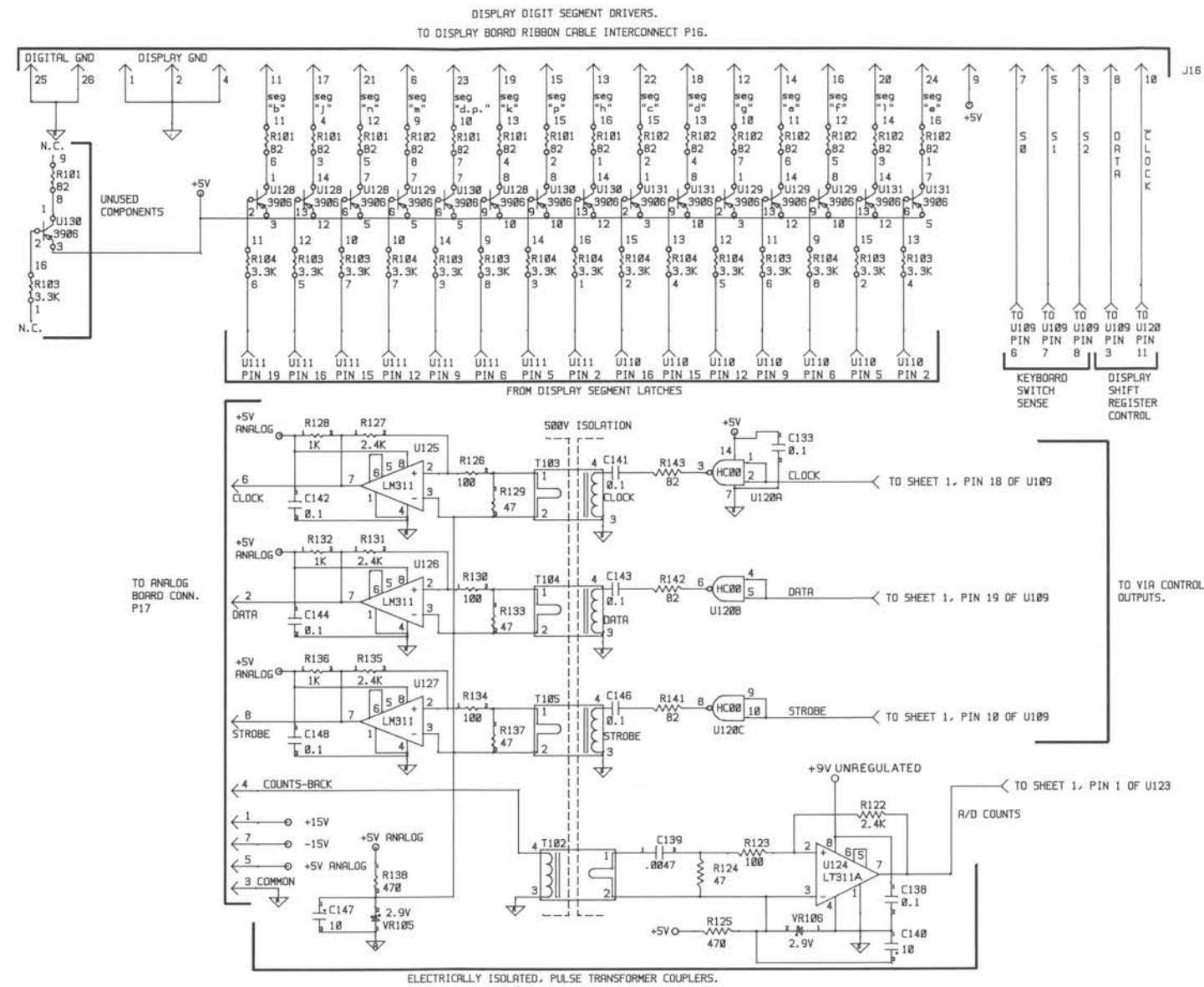
NOTES:

1. ALL RESISTOR VALUES ARE IN OHMS UNLESS OTHERWISE MARKED (K-KILOHMS, M-MEGOHMS).
2. ALL CAPACITOR VALUES ARE IN MICROFARADS UNLESS OTHERWISE MARKED (pF-PICOFARADS).
3.  $\nabla$  DENOTES DIGITAL COMMON.
4.  $\nabla$  DENOTES DISPLAY COMMON.
5.  $\nabla$  DENOTES ANALOG SIGNAL COMMON.
6.  $\nabla$  DENOTES CHASSIS CONNECTION.
7.  $\square$  DENOTES MAINFRAME GROUND SCREW.
8.  $\bullet$  DENOTES FRONT PANEL CONTROL.
9.  $\bullet$  DENOTES REAR PANEL MOUNTING.

KEITHLEY INSTRUMENTS INC.			
3875 KENTON ROAD CLEVELAND, OHIO 44115			
TITLE 196 DMM POWER SUPPLY			
SIZE D	QTY CAC	NUMBER 196-106	APP man
DATE FEB 12, 1986	DRAWN 1 SHEET		OF 3

Figure 7-4. Digital Board, Schematic Diagram, Dwg. No. 196-106 (sheet 1 of 3)

REV	DATE	BY	REVISION
A	11/20/83	RELEASED	
B	11/4/84		DRIVE COMPENSATION OF DIGITABLE FROM +5V TO +5V UNREGULATED. ALSO CHANGE OF PULSE FROM 10 TO 100 NS TO 10 NS.
C	12/05/84	SEE PAGE 1	
D	13/4/84	SEE PAGE 1	
DI	1/7/89	SEE PAGE THREE	



KEITHLEY INSTRUMENTS INC.			
1975 MODEL 196 CLARKSON, MASS 01901			
TITLE 196 DISPLAY SEGMENT CONT. AND PULSE XFMR'S.			
SIZE	DRN	NUMBER	APP
D	CAC	196-106	NYU
DATE	FEB 12, 1986		SHEET 2 OF 3

Figure 7-4. Digital Board, Schematic Diagram, Dwg. No. 196-106 (sheet 2 of 3)

ZONE	LYR	ECO NO	REVISION	ENG	DATE
A	11/83	RELEASED		MAH	3-7-86
B	11/84	SEE PAGE 1		MAH	5-7-86
C	1/85	SEE PAGE 1		MAH	12-17-87
D	1/85	SEE PAGE 1		MAH	12-17-87
D1	1/75	U106 + U106 VERR 27130		MAH	5-21-90

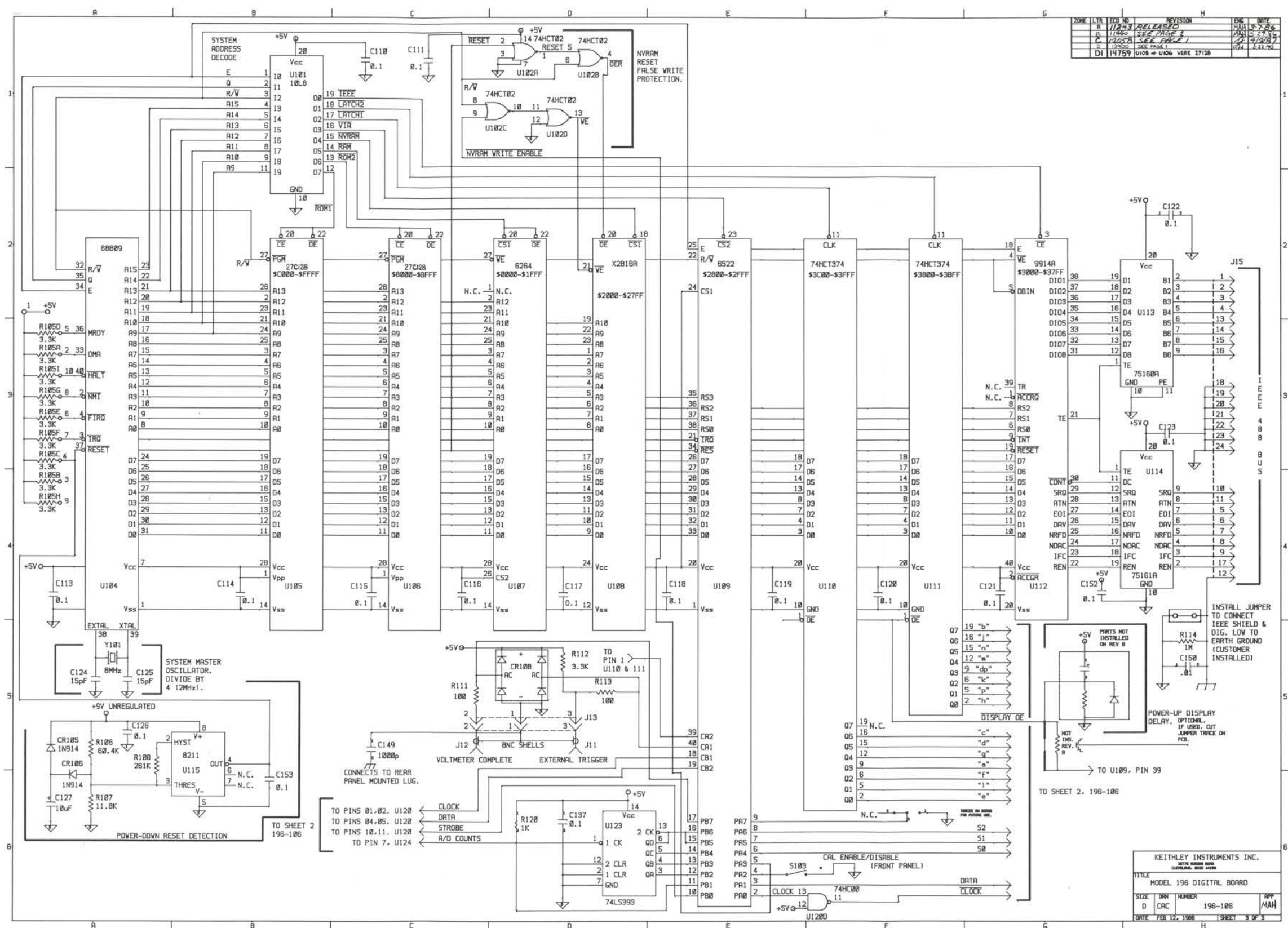


Figure 7-4. Digital Board, Schematic Diagram, Dwg. No. 196-106 (sheet 3 of 3)

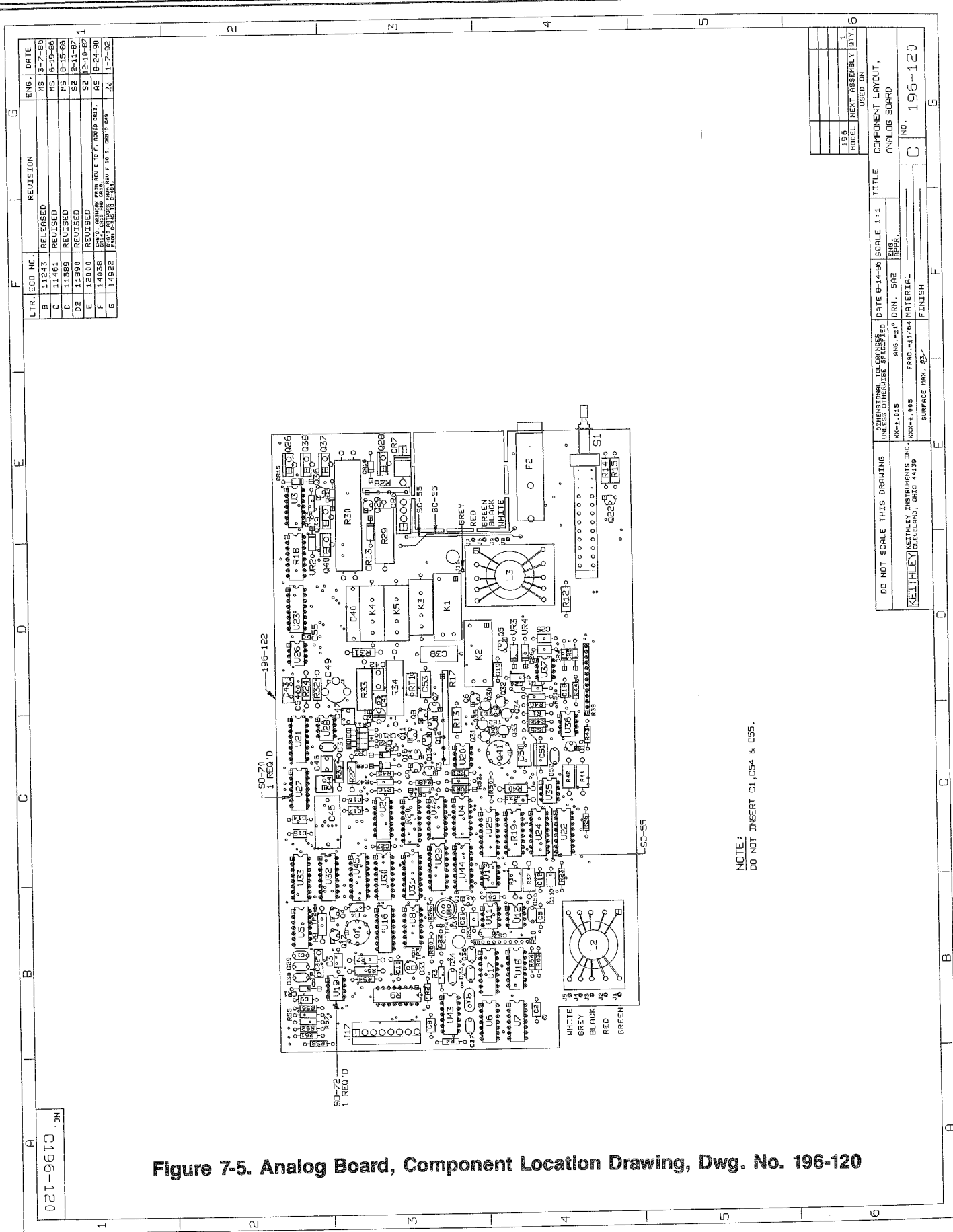


Figure 7-5. Analog Board, Component Location Drawing, Dwg. No. 196-120

LTR.	ECO NO.	REVISION	ENG.	DATE
B	11243	RELEASED	MS	3-7-86
C	11461	REVISED	MS	6-19-86
D	11589	REVISED	MS	6-15-86
D2	11899	REVISED	SZ	2-11-87
E	12000	REVISED	SZ	12-10-87
F	14036	CRP'S. ADJUSTING ZERO AND F. 10 F. BAKED CRYS. FROM 12.000 TO 12.005. FROM 12.005 TO 12.000.	AS	8-24-90
G	14922	FROM 12.005 TO 12.000.	JA	1-7-92

TYPE	MODEL	NEXT ASSEMBLY	QTY.
			1

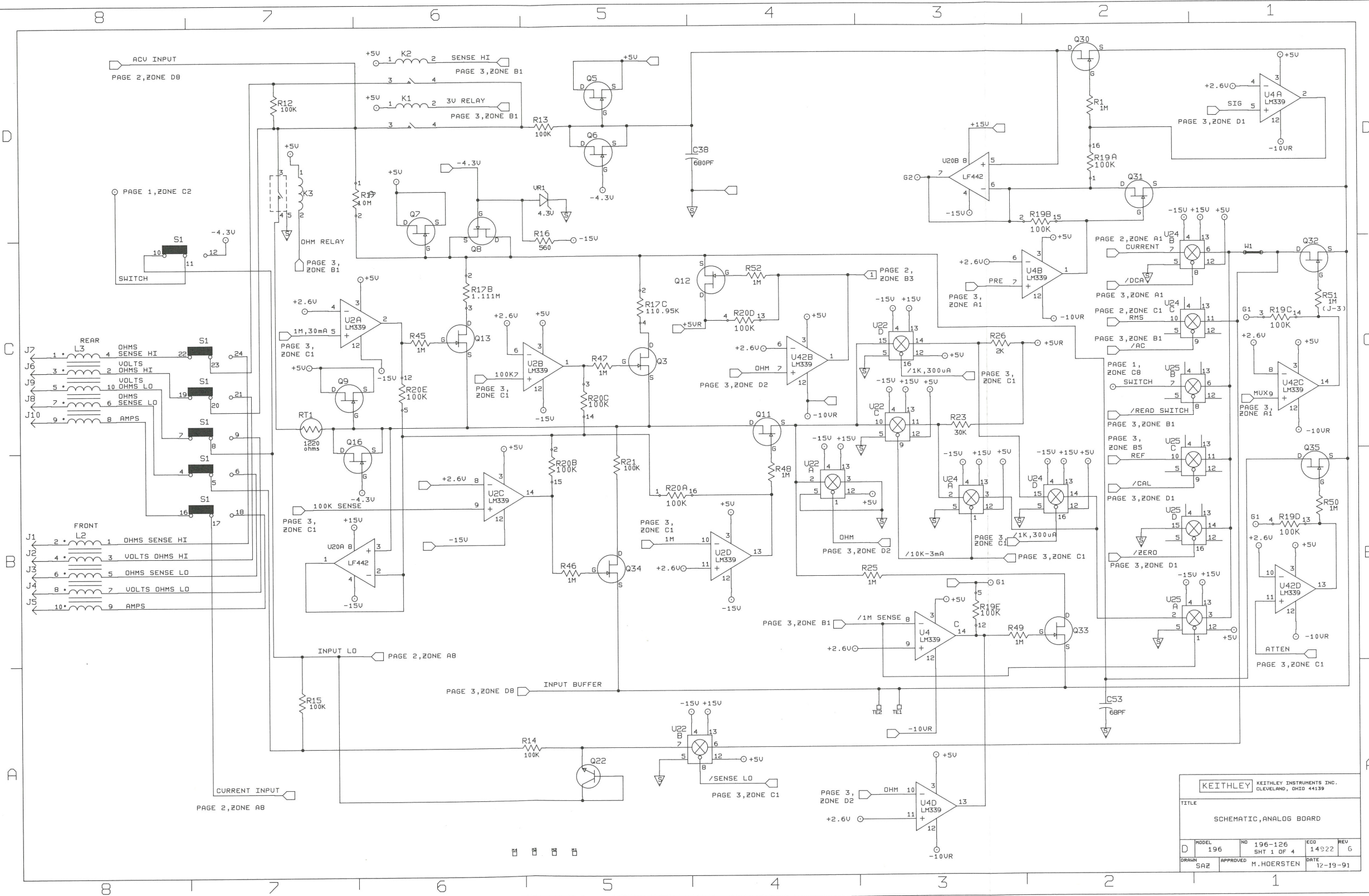
DO NOT SCALE THIS DRAWING	UNLESS OTHERWISE SPECIFIED	DATE 8-14-96	SCALE 1:1	TITLE
MP-2.015	ANG-237	DRN. SAR	ENR.	COMPONENT LAYOUT, ANALOG BOARD
XXX-2.005	FRAC-217/64	MATERIAL		
SURFACE FIN. 63		FINISH		
				NO. 196-120

NOTE:  
DO NOT INSERT C1, C54 & C55.

021-9610 .DN

INPUT TERMINAL IDENTIFICATION

Input Terminal	Schematic Designation	
	Front	Rear
VOLTS OHMS HI	P2	J6
VOLTS OHMS LO	P4	J9
OHMS SENSE HI	P1	J7
OHMS SENSE LO	P3	J8
AMPS	P5	J10



KEITHLEY KEITHLEY INSTRUMENTS INC. CLEVELAND, OHIO 44139

TITLE SCHEMATIC, ANALOG BOARD

MODEL 196	NO 196-126	ECO 14922	REV 6
DRAWN SAZ	APPROVED M. HOERSTEN	DATE 12-19-91	

Figure 7-6. Analog Board, Schematic Diagram, Dwg. No. 196-126 (sheet 1 of 4)



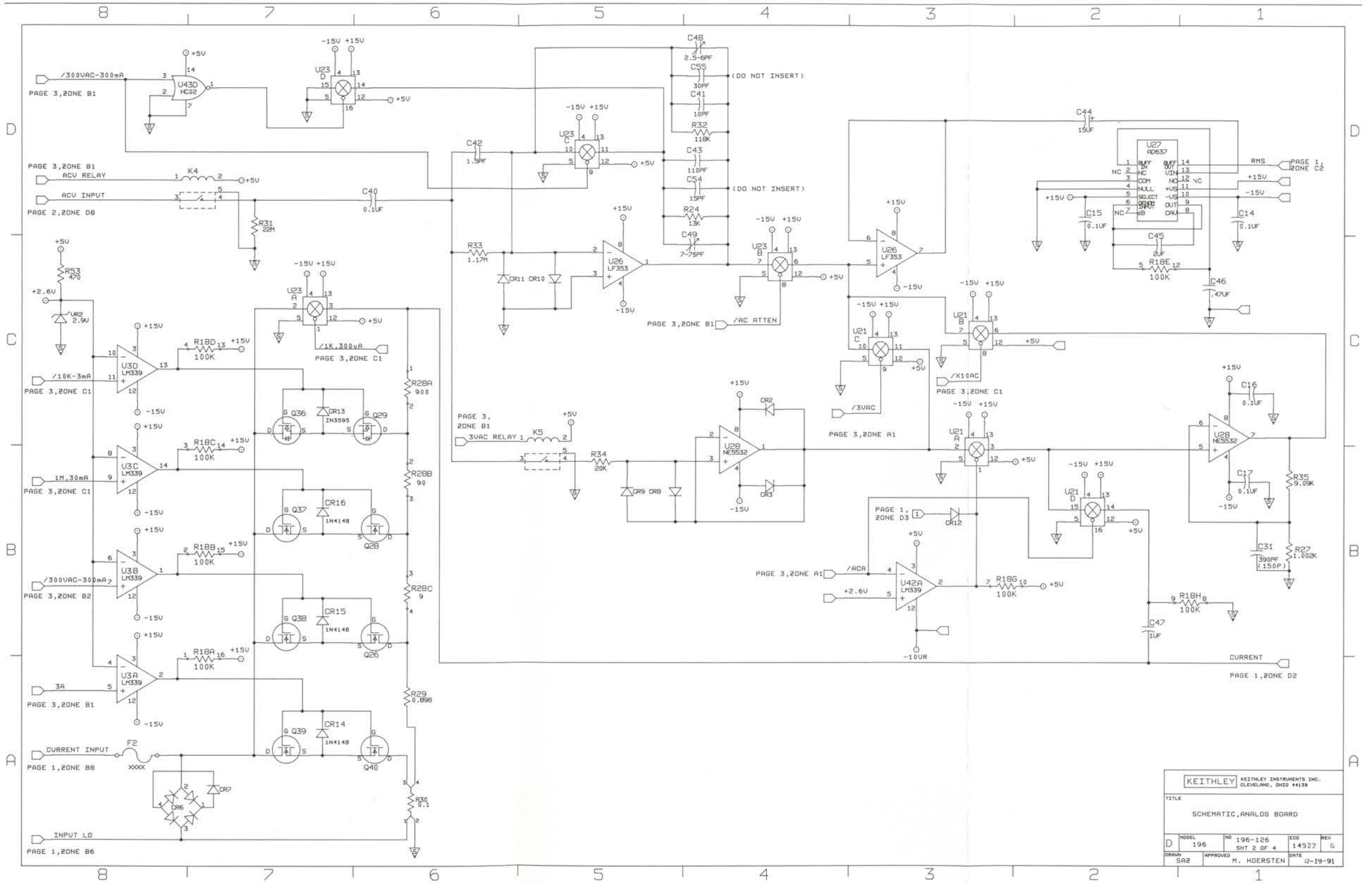
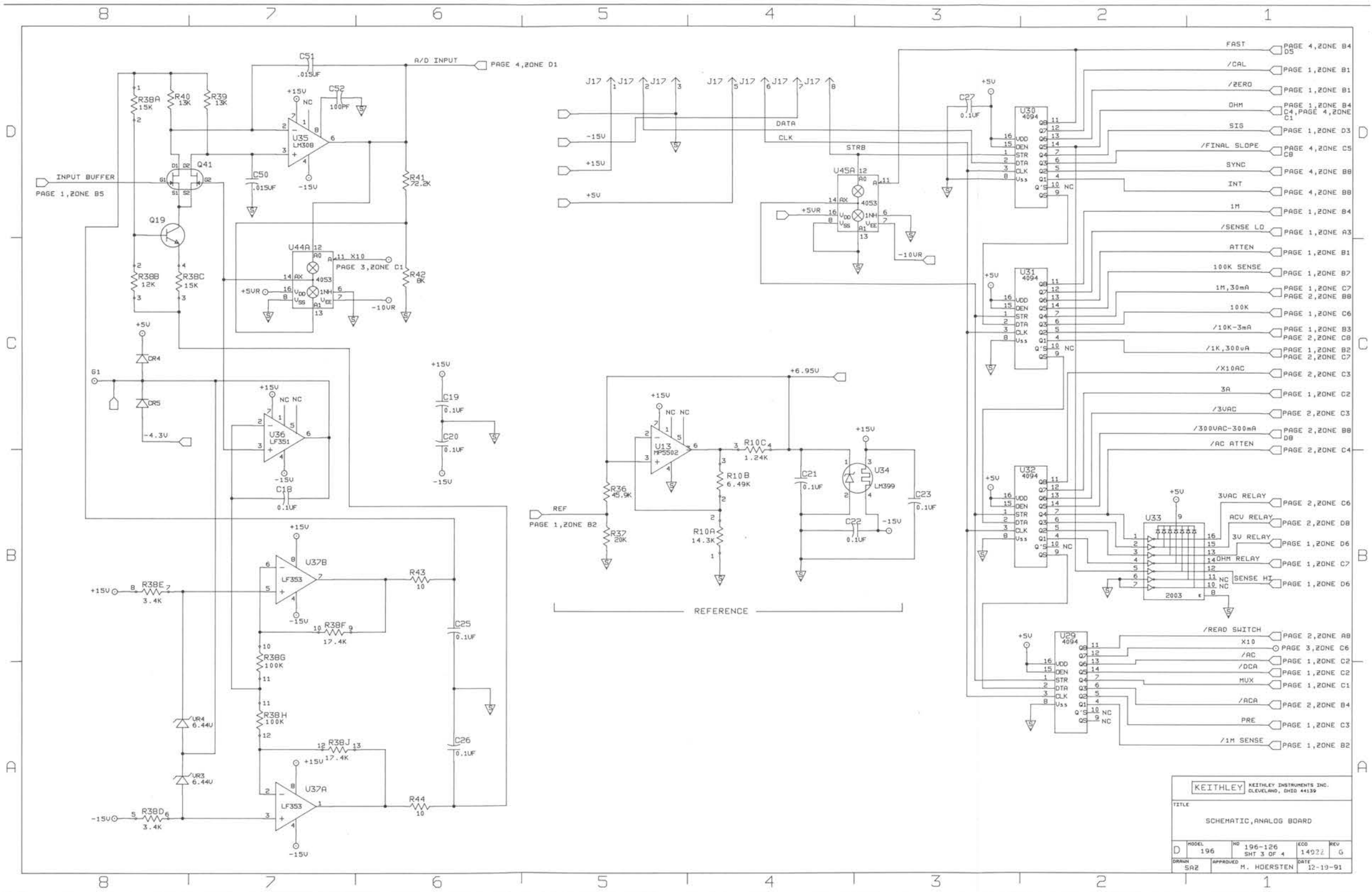


Figure 7-6. Analog Board, Schematic Diagram, Dwg. No. 196-126 (sheet 2 of 4)



KEITHLEY KEITHLEY INSTRUMENTS INC. CLEVELAND, OHIO 44139			
TITLE SCHEMATIC, ANALOG BOARD			
MODEL 196	NO 196-126	ECD 14922	REV G
DRAWN SAZ	APPROVED M. HOERSTEN	DATE 12-19-91	

Figure 7-6. Analog Board, Schematic Diagram, Dwg. No. 196-126 (sheet 3 of 4)

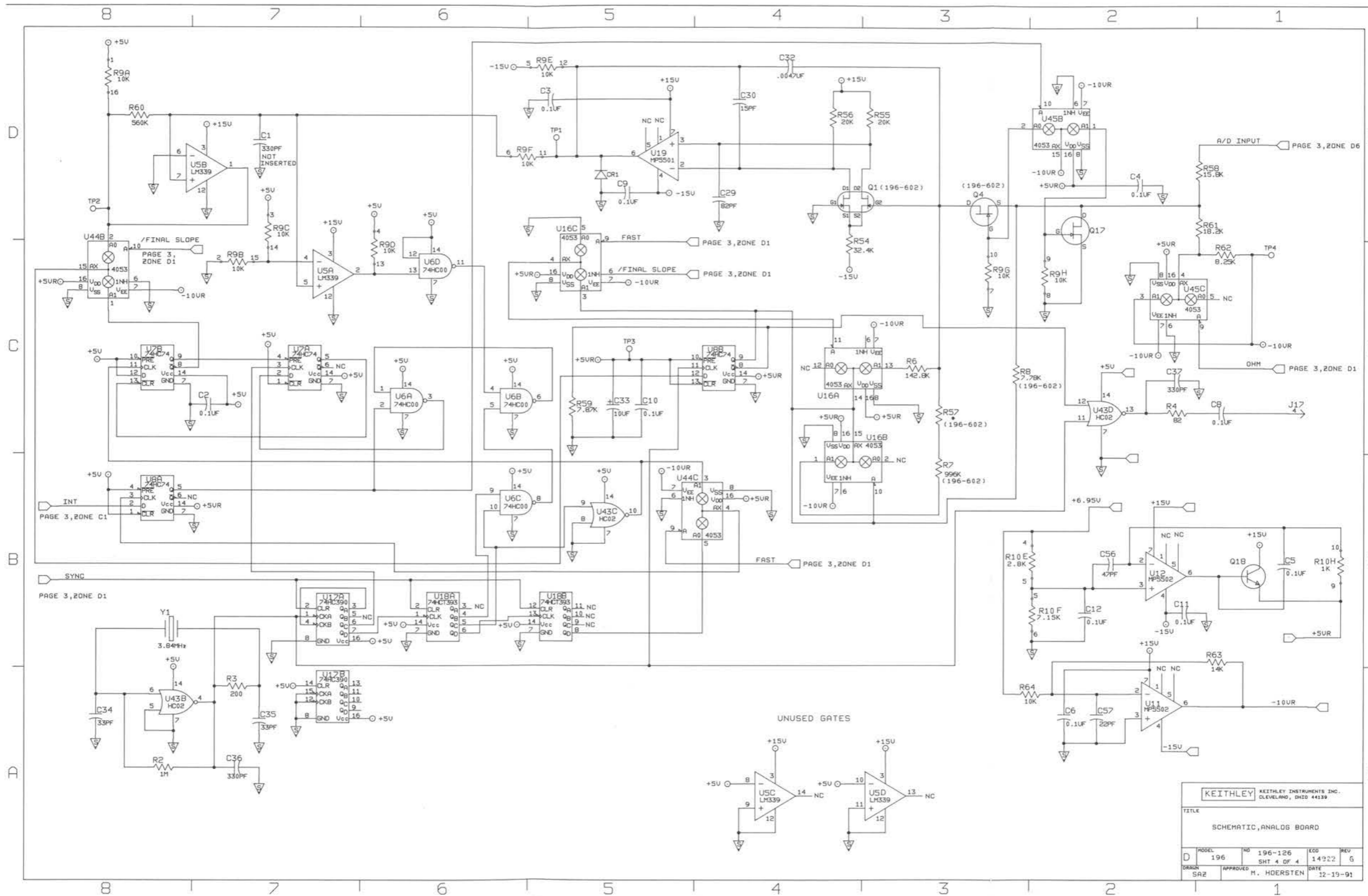


Figure 7-6. Analog Board, Schematic Diagram, Dwg. No. 196-126 (sheet 4 of 4)

KEITHLEY		KEITHLEY INSTRUMENTS INC.	
		CLEVELAND, OHIO 44139	
TITLE			
SCHEMATIC, ANALOG BOARD			
MODEL	NO	ECO	REV
196	196-126	14922	G
DRWN	APPROVED	DATE	
SAZ	M. HOERSTEN	12-19-91	