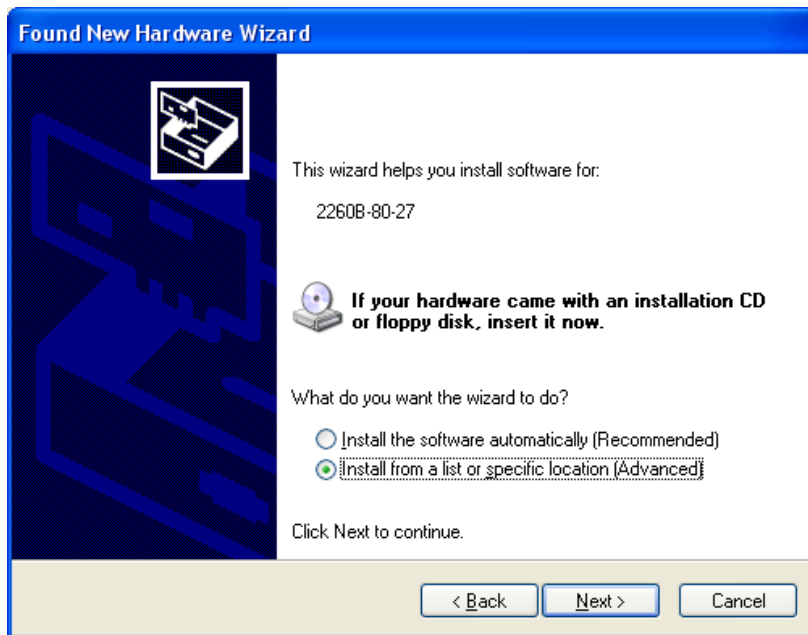


How To Install the Keithley Model 2260B USB driver (inf file)

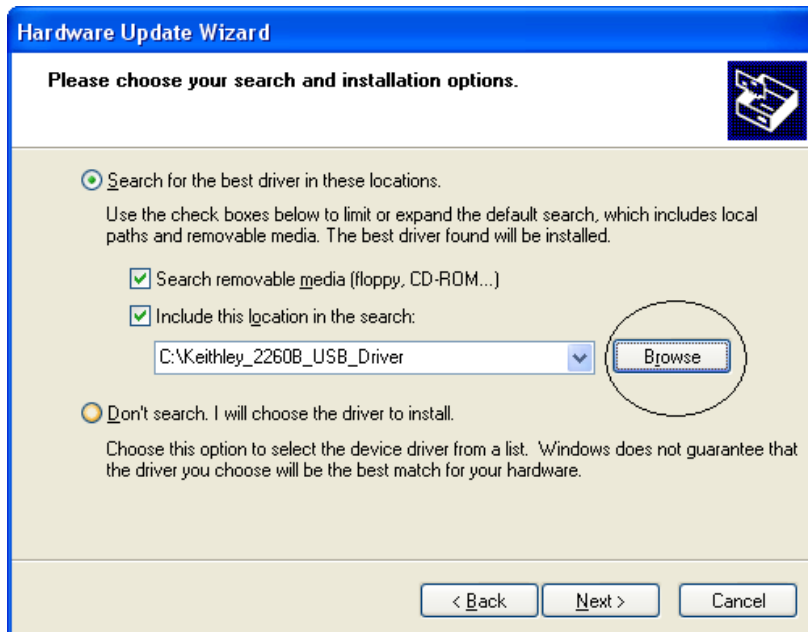
1. Power on the Model 2260B.
2. Connect the USB cable to the rear panel USB B port.
3. Press the Front Panel Function key to enter the Normal configuration settings.
4. Set the following USB settings:
F-22 = 2 (This will Set the rear panel USB port to USB-CDC)
5. Connect the 2260B USB cable to your pc.
6. Locate the inf file:
Insert the Series 2260B Product Documentation cd into your pc or download the 2260B USB Driver from the Keithley website and unzip into a local directory.
http://www.keithley.com/support/keidoc_searchresult?keyword=2260B&item_type=Software+Driver
7. Install the inf file using the New Hardware Wizard:
If the **Found New Hardware Wizard** does not appear, skip ahead to step 8.
If the **Found New Hardware Wizard** appears...



Select the **No, not this time** choice and press the **Next** button.



Then select the **Install from a list or specific location** choice and press the **Next** button.



Then, select the **Browse** button and select the directory folder where the Keithley_2260B.inf file is (on your cd or download folder) and press the **Next** Button.

Select the **Install this driver software anyway** or **Continue Anyway** choice when prompted (*ignore any message which indicates that it can't verify the publisher of this driver software*).

The driver will install and will indicate when it is finished.

Skip ahead to step 9.

8. Install the inf file using the Device Manager:

If the **Found New Hardware Wizard** does not appear...

Open the Control Panel -> System -> Device Manager.

Look in the Device Manager tree under Other Devices to locate the **2260B** listing.

Right-mouse click on the 2260B listing and select **Update Driver Software...**

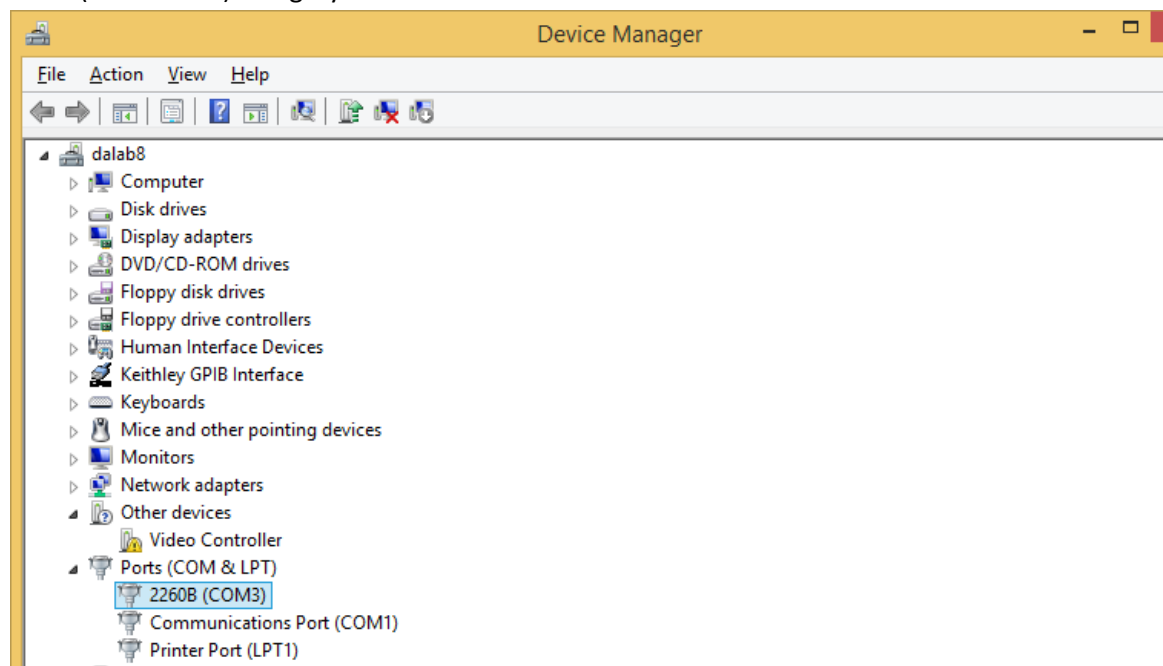
Select **Browse my computer** to locate the driver software.

Select the directory folder where the Keithley_2260B.inf file is (on your cd or download folder) and press the **Next** Button.

Select the **Install this driver software anyway** or **Continue Anyway** choice when prompted (*ignore any message which indicates that it can't verify the publisher of this driver software*).

The driver will install and will indicate when it is finished.

9. Look at your updated Device Manager tree and the 2260B listing will now appear under the Ports (COM & LPT) category as a COM device as follows:



10. The driver is now ready to use for remote communication and will communicate using a COM Port connection. Refer to the Series 2260B User and Programming Manuals for further details. Manuals are available on the product cd or downloadable online:

http://www.keithley.com/support/keidoc_searchresult?keyword=2260B&item_type=Manual