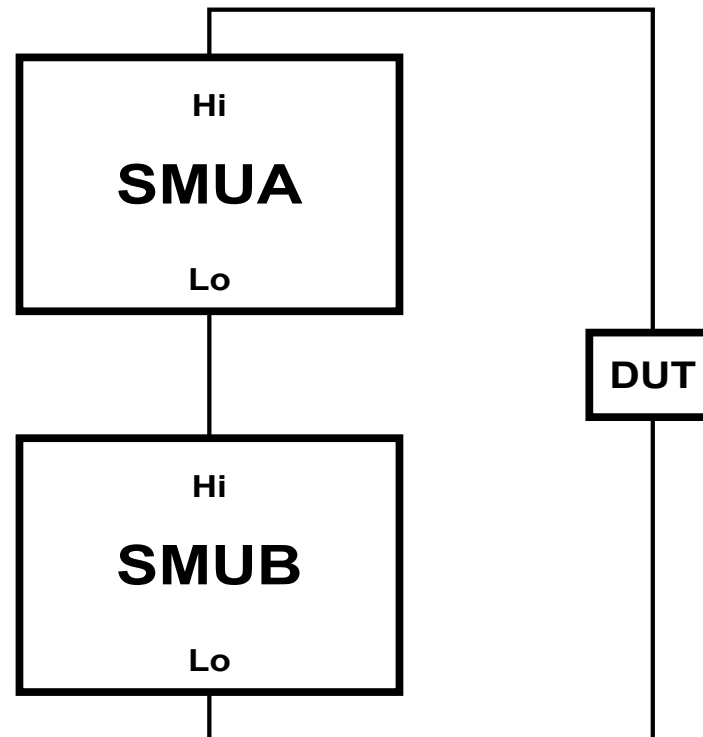


Keithley 2602 Example Program: High Voltage from Series SMU's

This example program demonstrates doubling the voltage output of the Model 2602 using both SMU channels wired in series and configured as voltage sources.

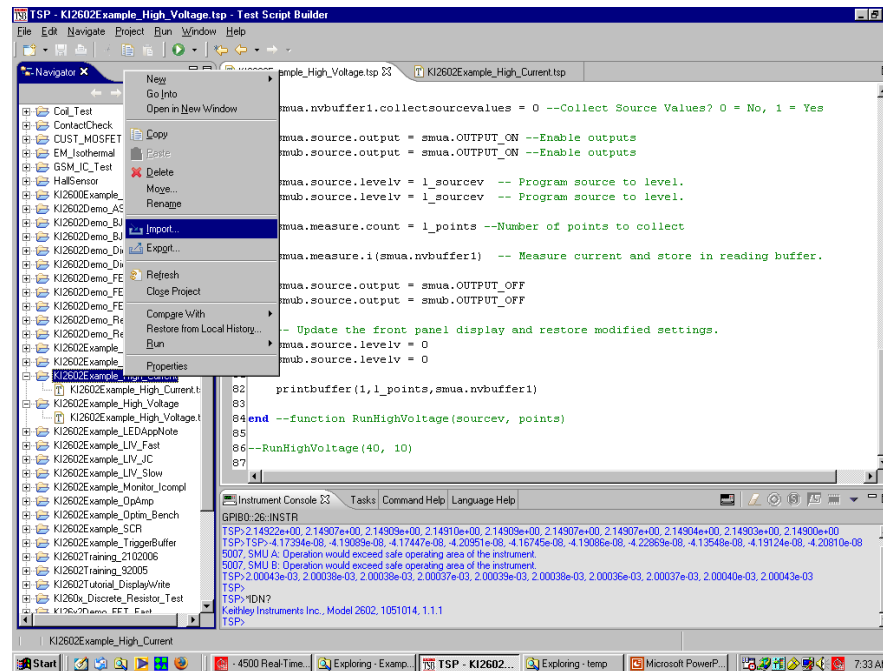


Test Schematic



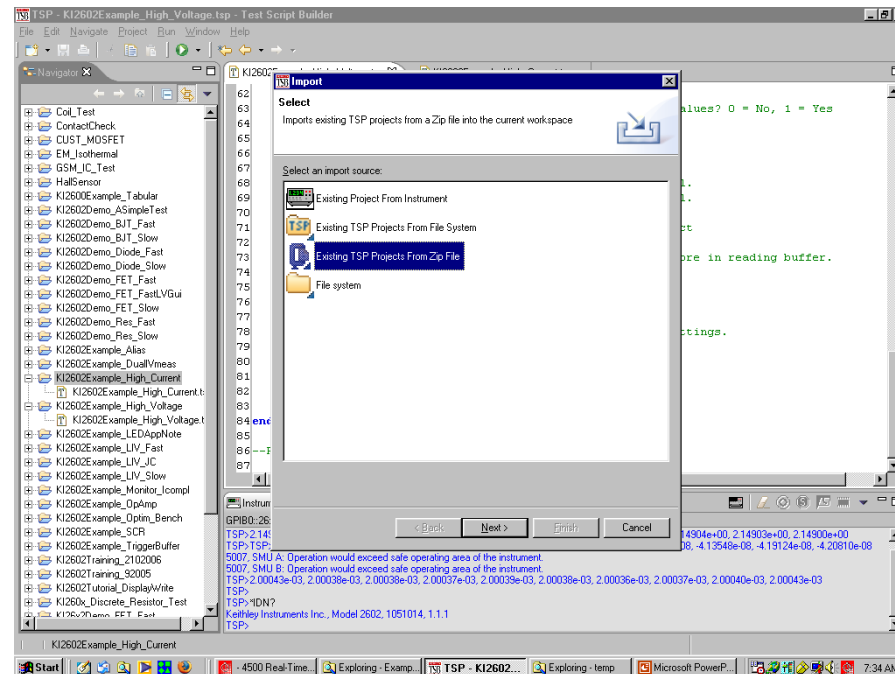
Installation

- Import and unzip file to Navigator Window

**KEITHLEY**

Installation

- Import from Zip



Connect and Run

- Connect to instrument
- Select project
- Right Click “Run as TSP” in active Window
- `Send RunHighVoltage (sourcev, points)`
- Each 2602 will deliver the programmed sourcev value. Setting this to 10V will deliver 20V at the DUT.
- For example, sending `RunHighVoltage (10, 2)` will source 20V to the DUT and collect 2 readings.



Test Considerations

- Compliance for Both SMU's should be set to the maximum value. If either SMU reaches a compliance state, damage to the instrument and DUT may result.
- **WARNING:** This configuration can deliver harmful signal levels. Please take precautions to avoid exposure to hazardous currents/voltages.