

KPXI Compact GPIB Controller

Quick Start Guide

KPXI-488-903-01 Rev. A / January 2007

ECA 42912

WARRANTY

Keithley Instruments, Inc. warrants this product to be free from defects in material and workmanship for a period of 1 year from date of shipment.

Keithley Instruments, Inc. warrants the following items for 90 days from the date of shipment: probes, cables, rechargeable batteries, diskettes, and documentation.

During the warranty period, we will, at our option, either repair or replace any product that proves to be defective.

To exercise this warranty, write or call your local Keithley Instruments representative, or contact Keithley Instruments headquarters in Cleveland, Ohio. You will be given prompt assistance and return instructions. Send the product, transportation prepaid, to the indicated service facility. Repairs will be made and the product returned, transportation prepaid. Repaired or replaced products are warranted for the balance of the original warranty period, or at least 90 days.

LIMITATION OF WARRANTY

This warranty does not apply to defects resulting from product modification without Keithley Instruments' express written consent, or misuse of any product or part. This warranty also does not apply to fuses, software, non-rechargeable batteries, damage from battery leakage, or problems arising from normal wear or failure to follow instructions.

THIS WARRANTY IS IN LIEU OF ALL OTHER WARRANTIES, EXPRESSED OR IMPLIED, INCLUDING ANY IMPLIED WARRANTY OF MERCHANTABILITY OR FITNESS FOR A PARTICULAR USE. THE REMEDIES PROVIDED HEREIN ARE BUYER'S SOLE AND EXCLUSIVE REMEDIES.

NEITHER KEITHLEY INSTRUMENTS, INC. NOR ANY OF ITS EMPLOYEES SHALL BE LIABLE FOR ANY DIRECT, INDIRECT, SPECIAL, INCIDENTAL OR CONSEQUENTIAL DAMAGES ARISING OUT OF THE USE OF ITS INSTRUMENTS AND SOFTWARE EVEN IF KEITHLEY INSTRUMENTS, INC., HAS BEEN ADVISED IN ADVANCE OF THE POSSIBILITY OF SUCH DAMAGES. SUCH EXCLUDED DAMAGES SHALL INCLUDE, BUT ARE NOT LIMITED TO: COSTS OF REMOVAL AND INSTALLATION, LOSSES SUSTAINED AS THE RESULT OF INJURY TO ANY PERSON, OR DAMAGE TO PROPERTY.

KEITHLEY

A GREATER MEASURE OF CONFIDENCE

Keithley Instruments, Inc.

Corporate Headquarters • 28775 Aurora Road • Cleveland, Ohio 44139
440-248-0400 • Fax: 440-248-6168 • 1-888-KEITHLEY (534-8453) • www.keithley.com

KPXI

Compact GPIB Controller

Quick Start Guide

©2007, Keithley Instruments, Inc.
All rights reserved.
Cleveland, Ohio, U.S.A.

Document Number: KPXI-488-903-01 Rev. A / January 2007

Manual Print History

The print history shown below lists the printing dates of all Revisions and Addenda created for this manual. The Revision Level letter increases alphabetically as the manual undergoes subsequent updates. Addenda, which are released between Revisions, contain important change information that the user should incorporate immediately into the manual. Addenda are numbered sequentially. When a new Revision is created, all Addenda associated with the previous Revision of the manual are incorporated into the new Revision of the manual. Each new Revision includes a revised copy of this print history page.

Revision A (Document Number KPXI-488-903-01)..... January 2007

All Keithley Instruments product names are trademarks or registered trademarks of Keithley Instruments, Inc. Other brand names are trademarks or registered trademarks of their respective holders.

The following safety precautions should be observed before using this product and any associated instrumentation. Although some instruments and accessories would normally be used with non-hazardous voltages, there are situations where hazardous conditions may be present.

This product is intended for use by qualified personnel who recognize shock hazards and are familiar with the safety precautions required to avoid possible injury. Read and follow all installation, operation, and maintenance information carefully before using the product. Refer to the manual for complete product specifications.

If the product is used in a manner not specified, the protection provided by the product may be impaired.

The types of product users are:

Responsible body is the individual or group responsible for the use and maintenance of equipment, for ensuring that the equipment is operated within its specifications and operating limits, and for ensuring that operators are adequately trained.

Operators use the product for its intended function. They must be trained in electrical safety procedures and proper use of the instrument. They must be protected from electric shock and contact with hazardous live circuits.

Maintenance personnel perform routine procedures on the product to keep it operating properly, for example, setting the line voltage or replacing consumable materials. Maintenance procedures are described in the manual. The procedures explicitly state if the operator may perform them. Otherwise, they should be performed only by service personnel.

Service personnel are trained to work on live circuits, and perform safe installations and repairs of products. Only properly trained service personnel may perform installation and service procedures.

Keithley Instruments products are designed for use with electrical signals that are rated Measurement Category I and Measurement Category II, as described in the International Electrotechnical Commission (IEC) Standard IEC 60664. Most measurement, control, and data I/O signals are Measurement Category I and must not be directly connected to mains voltage or to voltage sources with high transient over-voltages. Measurement Category II connections require protection for high transient over-voltages often associated with local AC mains connections. Assume all measurement, control, and data I/O connections are for connection to Category I sources unless otherwise marked or described in the Manual.

Exercise extreme caution when a shock hazard is present. Lethal voltage may be present on cable connector jacks or test fixtures. The American National Standards Institute (ANSI) states that a shock hazard exists when voltage levels greater than 30V RMS, 42.4V peak, or 60VDC are present. A good safety practice is to expect that hazardous voltage is present in any unknown circuit before measuring.

Operators of this product must be protected from electric shock at all times. The responsible body must ensure that operators are prevented access and/or insulated from every connection point. In some cases, connections must be exposed to potential human contact. Product operators in these circumstances must be trained to protect themselves from the risk of electric shock. If the circuit is capable of operating at or above 1000 volts, no conductive part of the circuit may be exposed.

Do not connect switching cards directly to unlimited power circuits. They are intended to be used with impedance limited sources. NEVER connect switching cards directly to AC mains. When connecting sources to switching cards, install protective devices to limit fault current and voltage to the card.

Before operating an instrument, make sure the line cord is connected to a properly grounded power receptacle. Inspect the connecting cables, test leads, and jumpers for possible wear, cracks, or breaks before each use.

When installing equipment where access to the main power cord is restricted, such as rack mounting, a separate main input power disconnect device must be provided, in close proximity to the equipment and within easy reach of the operator.

For maximum safety, do not touch the product, test cables, or any other instruments while power is applied to the circuit under test. ALWAYS remove power from the entire test system and discharge any capacitors before: connecting or disconnecting cables or jumpers, installing or removing switching cards, or making internal changes, such as installing or removing jumpers.

Do not touch any object that could provide a current path to the common side of the circuit under test or power line (earth) ground. Always make measurements with dry hands while standing on a dry, insulated surface capable of withstanding the voltage being measured.


The instrument and accessories must be used in accordance with its specifications and operating instructions or the safety of the equipment may be impaired.


Do not exceed the maximum signal levels of the instruments and accessories, as defined in the specifications and operating information, and as shown on the instrument or test fixture panels, or switching card.


When fuses are used in a product, replace with same type and rating for continued protection against fire hazard.

Chassis connections must only be used as shield connections for measuring circuits, NOT as safety earth ground connections.

If you are using a test fixture, keep the lid closed while power is applied to the device under test. Safe operation requires the use of a lid interlock.

If a  screw is present, connect it to safety earth ground using the wire recommended in the user documentation.

The  symbol on an instrument indicates that the user should refer to the operating instructions located in the manual.

The  symbol on an instrument shows that it can source or measure 1000 volts or more, including the combined effect of normal and common mode voltages. Use standard safety precautions to avoid personal contact with these voltages.

The  symbol on an instrument shows that the surface may be hot. Avoid personal contact to prevent burns.

The  symbol indicates a connection terminal to the equipment frame.

The **WARNING** heading in a manual explains dangers that might result in personal injury or death. Always read the associated information very carefully before performing the indicated procedure.

The **CAUTION** heading in a manual explains hazards that could damage the instrument. Such damage may invalidate the warranty.

Instrumentation and accessories shall not be connected to humans.

Before performing any maintenance, disconnect the line cord and all test cables.

To maintain protection from electric shock and fire, replacement components in mains circuits, including the power transformer, test leads, and input jacks, must be purchased from Keithley Instruments. Standard fuses, with applicable national safety approvals, may be used if the rating and type are the same. Other components that are not safety related may be purchased from other suppliers as long as they are equivalent to the original component. (Note that selected parts should be purchased only through Keithley Instruments to maintain accuracy and functionality of the product.) If you are unsure about the applicability of a replacement component, call a Keithley Instruments office for information.

To clean an instrument, use a damp cloth or mild, water based cleaner. Clean the exterior of the instrument only. Do not apply cleaner directly to the instrument or allow liquids to enter or spill on the instrument. Products that consist of a circuit board with no case or chassis (e.g., data acquisition board for installation into a computer) should never require cleaning if handled according to instructions. If the board becomes contaminated and operation is affected, the board should be returned to the factory for proper cleaning/servicing.

Table of Contents

Section	Topic	Page
1	Introduction	1-1
	Introduction.....	1-2
	Overview.....	1-2
	Performance.....	1-2
	Compatibility.....	1-2
	Features.....	1-2
	Manual addenda.....	1-3
	Safety symbols and terms.....	1-3
	Specifications.....	1-3
	GPIB bus properties.....	1-3
	Certificates.....	1-3
	General specifications.....	1-4
	Unpacking and inspection.....	1-4
	Inspection for damage.....	1-4
	Shipment contents.....	1-4
	Instruction manual.....	1-4
	Repacking for shipment.....	1-5
	Software support.....	1-5
2	Installation and configuration	2-1
	Introduction.....	2-2
	Software installation description.....	2-2
	Installation requirements.....	2-2
	Driver installation.....	2-3
	Hardware installation.....	2-4
	Installation procedure.....	2-4
	PXI configuration.....	2-4
	Cabling.....	2-5
	Using the Keithley GPIB Configuration Utility.....	2-8
	Using the Keithley Instruments KPXI-488 Diagnostic Tool.....	2-9
3	Using a GPIB	3-1
	Introduction.....	3-2
	GPIB connection configuration.....	3-2
	Data lines.....	3-3
	Handshake lines.....	3-3
	System management lines.....	3-3
	Model KPXI-488 block diagram.....	3-4
Appendix	Topic	Page
A	Specifications	A-1
Index	I-1

This page left blank intentionally.

List of Figures

Section	Figure	Title	Page
2	Figure 2-1	InstallShield® Wizard	2-3
	Figure 2-2	Restart system	2-4
	Figure 2-3	Linear connection configuration	2-6
	Figure 2-4	Star connection configuration	2-7
	Figure 2-5	Keithley GPIB Configuration Utility	2-8
	Figure 2-6	GPIB Interface & Bus Setting	2-8
	Figure 2-7	Keithley KPXI-488 Diagnostic Tool	2-9
3	Figure 3-1	Standard GPIB connector	3-2
	Figure 3-2	Model KPXI-488 block diagram	3-4

This page left blank intentionally.

List of Tables

Section	Figure	Title	Page
1	Table 1-1	Power requirements.....	1-4
3	Table 3-1	GPIB connector line.....	3-3

This page left blank intentionally.

In this section:

Topic	Page
Introduction	1-2
Overview	1-2
Performance	1-2
Compatibility	1-2
Features	1-2
Manual addenda	1-3
Safety symbols and terms	1-3
Specifications	1-3
GPIB bus properties	1-3
Certificates	1-3
General specifications	1-4
Unpacking and inspection	1-4
Inspection for damage	1-4
Shipment contents	1-4
Instruction manual	1-4
Repacking for shipment	1-5
Software support	1-5

Introduction

This section contains general information about the Keithley Instruments Model KPXI-488 GPIB Controller Interface Card.

If you have any questions after reviewing this information, contact your local Keithley Instruments representative or call one of our applications engineers. Find current contact information at www.keithley.com.

Overview

Keithley Instruments' Model KPXI-488 GPIB Controller Interface Card is fully compatible with the IEEE488.2 instrumentation control and communication standard. The interface card is capable of controlling up to 14 stand-alone instruments via IEEE488 cables. Designed to meet the requirements for high performance and maximum programming portability, the 1KB on-board FIFO buffer (First In First Out) and block transfer mode provide up to 1.5MB per second GPIB transfer rate.

With the Keithley Command Compatible driver, the National Instruments™ (NI)¹ Command Compatible driver, and VISA support (Virtual Instrument Software Architecture), the Model KPXI-488 provides extensive compatibility with your existing applications and instrument drivers.

Performance

This newly-designed Model KPXI-488 GPIB Controller Interface Card works with all PXI standard 2.2 compliant controllers and chassis. An on-board 1KB FIFO is placed between the GPIB bus and PCI controller to buffer GPIB read/write operations. The FIFO eliminates the gap between the slower GPIB bus (which is about 1.5MB per second) and the fast PXI bus (132MB per second), dramatically increasing overall system performance.

Compatibility

The Model KPXI-488 provides complete software support, including a driver API (application program interface) that is command compatible with Keithley Instruments' and Capital Equipment Corporations' IEEE_32M.DLL, and a driver API that is NI command compatible with GPIB32.DLL (programs written based on these DLL's can be executed on the Model KPXI-488 without any major modification, often no modifications at all). Industry-standard VISA libraries are also supported to ensure compatibility with applications utilizing VISA. Through design, the Model KPXI-488 is plug-and-play compatible with your existing applications.

Features

The Model KPXI-488 GPIB Controller Interface Card provides the following advanced features:

- Fully compatible with the IEEE488.2 standard
- Supports a 32-bit PXI bus
- Up to 1.5MB per second data transfer rates
- On-board 1KB FIFO for read/write operations
- Command compatible driver API for Keithley Instruments, NI, and VISA.
- Interactive utility for testing and diagnostics


1. National Instruments™ and NI are trademarks of the National Instruments Corporation.


Manual addenda


Any improvements or changes concerning the Model KPXI-488 or manual will be explained in an addendum included with the manual. Be sure to note these changes and incorporate them into the manual.

Safety symbols and terms

The following symbols and terms may be found on the Model KPXI-488 or used in this manual:

The  symbol indicates that the user should refer to the operating instructions located in the manual.

The  symbol shows that high voltage may be present on the terminal(s). Use standard safety precautions to avoid personal contact with these voltages.

The  symbol on an instrument shows that the surface may be hot. Avoid personal contact to prevent burns.

The **WARNING** heading used in this manual explains dangers that might result in personal injury or death. Always read the associated information very carefully before performing the indicated procedure.

The **CAUTION** heading used in this manual explains hazards that could damage the switch. Such damage may invalidate the warranty.

Specifications

Detailed Model KPXI-488 specifications are included in [Appendix A](#); a specification overview is presented below. Check the Keithley Instruments website (www.keithley.com) for latest updates to the specifications.

GPIB bus properties

- Up to 14 instruments can be connected to one controller
- Maximal 1.5MB per second data transfer rate
- Cable length:
 - 2 meters between each instrument (suggested)
 - 20 meters total cable length
- Data transfer mode: 8 bits parallel
- Handshake: 3-wire handshake, reception of each data byte is acknowledged

Certificates

- **Safety:** European Directive 73/23/EEC, EN60950
- **EMC/EMI:** European Directive 89/336/EEC, EN55022, EN55024

General specifications

- I/O connector: IEEE488 standard 24-pin connector
- Operating temperature: 0°C to 55°C
- Storage temperature: -20°C to 80°C at 5% to 95% humidity
- Relative humidity: 5% to 95%, non-condensing

Table 1-1

Power requirements

Current
400mA (typical)
750mA (maximum)

- Dimensions (not including connectors): 135mm x 107mm

Unpacking and inspection

CAUTION The Model KPXI-488 contains electro-static sensitive components that can easily be damaged by static electricity. Handle the module on a grounded anti-static mat. The operator should be wearing an anti-static wristband, grounded at the same point as the anti-static mat.

Inspection for damage

The Model KPXI-488 was carefully inspected electrically and mechanically before shipment. After unpacking all items from the shipping carton, check for any obvious signs of physical damage that may have occurred during transit. Report any damage to the shipping agent immediately. Save the original packing carton for possible future shipment.

Shipment contents

The following items are included with every Model KPXI-488 order:

- Model KPXI-488
- A CD (KPXI-488-950-01) that contains drivers, manual, and software for all KPXI Series products

Instruction manual

The product CD-ROM contains this Quick Start Guide and a Reference Manual for the Model KPXI-488. The reference manual provides programming information on Keithley Command Compatible functions and NI command compatible functions (syntax as well as examples in C/ C++, Visual Basic, etc.).

Always check the Keithley Instruments website (www.keithley.com) for the latest revision of the manual. The latest manual can be downloaded (in PDF format) from the website.

Repacking for shipment

Should it become necessary to return the Model KPXI-488 for repair, carefully pack the unit in its original packing carton or the equivalent, and follow these instructions:

- Call the Repair Department for a Return Material Authorization (RMA) number. Call the Repair Department toll-free at 1-800-552-1115 (US only). Outside of the US, Worldwide Service Centers contact information is available at www.keithley.com.
- Advise as to the warranty status of the Model KPXI-488.
- Write ATTENTION REPAIR DEPARTMENT and the RMA number on the shipping label.
- Fill out and include the Service Form located at the back of this manual.

Software support

The Model KPXI-488 provides device drivers for Windows® XP/2000 operating systems. The Keithley Instruments GPIB driver package provides a diagnostic utility to test your Model KPXI-488 GPIB card, as well as programming samples and source codes for Microsoft® Visual Basic and Visual C++. The Model KPXI-488 also offers support for National Instruments™ LabVIEW™ and LabWindows/CVI™. Find the Keithley Instruments GPIB driver package located on the supplied CD. Refer to [Software installation description](#) in [Section 2](#) for detailed software installation instructions. Refer to [Section 3](#) for a description of the operational theory of a GPIB (General Purpose Interface Bus) and the basic architecture of Keithley Instruments Model KPXI-488 GPIB interface card. Contact Keithley Instruments for other operating system support.

For LabVIEW™ and LabWindows/CVI™ support, Keithley Instruments recommends the installation of the NI Command Compatible Driver. For LabVIEW programmers, Keithley Instruments supplies a set of LabVIEW GPIB VIs that are optimized for use with the KPXI-488.

This page left blank intentionally.

Installation and configuration

In this section:

Topic	Page
Introduction	2-2
Software installation description	2-2
Installation requirements	2-2
Driver installation	2-3
Hardware installation	2-4
Installation procedure	2-4
PXI configuration	2-4
Cabling	2-5
Using the Keithley GPIB Configuration Utility	2-8
Using the Keithley Instruments KPXI-488 Diagnostic Tool	2-9

Introduction

This section describes unpacking information and describes how to install the Model KPXI-488. To install the Model KPXI-488 in a system, after reviewing the [Software installation description](#) and [Installation requirements](#), complete (in this order):

1. [Driver installation](#)
2. [Hardware installation](#)
3. [Cabling](#)

See [Using the Keithley GPIB Configuration Utility](#) and [Using the Keithley Instruments KPXI-488 Diagnostic Tool](#) for information on using these supplied utilities.

WARNING *The procedures in this section are intended only for qualified service personnel. Do not perform these procedures unless you are qualified to do so. Failure to recognize and observe normal safety precautions could result in personal injury or death.*

CAUTION *The Model KPXI-488 contains electro-static sensitive components that can easily be damaged by static electricity. Handle the module on a grounded anti-static mat. The operator should be wearing an anti-static wristband, grounded at the same point as the anti-static mat.*

CAUTION *Do not apply power to the card if it has been damaged.*

Software installation description

This section describes the software installation for the Keithley Instruments Model KPXI-488. Driver installation is outlined along with information on using the Keithley GPIB Configuration Utility and the KPXI-488 Diagnostic Tool.

The Keithley Instruments Model KPXI-488 is delivered with a GPIB driver package that supports Windows® XP/2000 Operating Systems. The KPXI-488 drivers are designed to be command compatible with your current applications. They provide both Keithley Command Compatible¹ and NI² command compatible APIs³ and software support for program developers using Microsoft® programming languages like Visual Basic®, Visual C, as well as LabVIEW™ and LabWindows/CVI™.⁴ The KPXI-488 also supports industry-standard VISA⁵ libraries. Refer to the Keithley Instruments Model KPXI-488 Reference Manual (KPXI-488-901-01) for complete function and programming information.

Installation requirements

Review the following list of important requirements that must be taken into account prior to installing the Model KPXI-488:

- I. The KPXI-488 is *not* compatible with Dynamic Link Libraries (DLL) from other IEEE interface board suppliers. Due to the KPXI-488's command compatibility with National Instruments™ and Capital Equipment Corporation (CEC), the installation program for the KPXI-488 will install a DLL that has the same name as those provided by National

1. Derived from the Capital Equipment Corporation (CEC) command set.

2. National Instruments™ and NI™ are trademarks of the National Instruments Corporation. Other brand names are trademarks or registered trademarks of their respective holders.

3. API—Application Program Interface

4. CVI—C for Virtual Instrumentation

5. VISA—Virtual Instrument Software Architecture

Instruments (**GPIB32.DLL**) and CEC (and previous Keithley) interfaces (**IEEE_32M.DLL**). **For proper installation of the KPXI-488 hardware and software, you must remove any existing GPIB interfaces from your PC and uninstall any currently installed GPIB drivers.** Failure to uninstall any existing GPIB drivers before installing the KPXI-488 command compatible drivers can, and likely will cause system problems.

- II. **For LabVIEW™ and LabWindows/CVI™ support, Keithley Instruments recommends the installation of the NI Command Compatible Driver.** For LabVIEW programmers, Keithley Instruments supplies a set of LabVIEW GPIB VIs that are optimized for use with the KPXI-488.

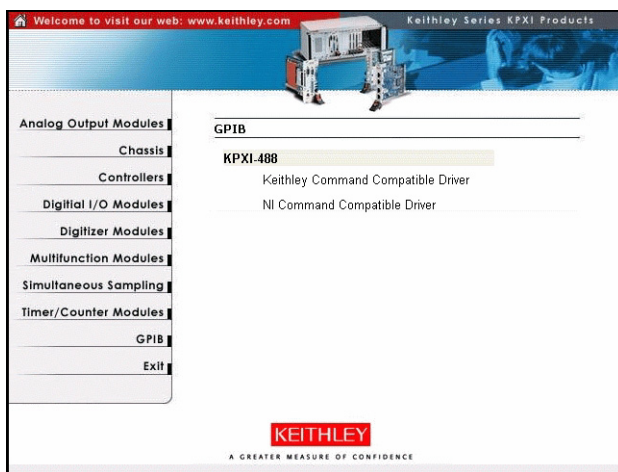
The procedure to install the KPXI-488 driver package and utilities is outlined in [Driver installation](#).

Driver installation

Use the following procedure as a guideline to install the GPIB Driver Package on your computer:

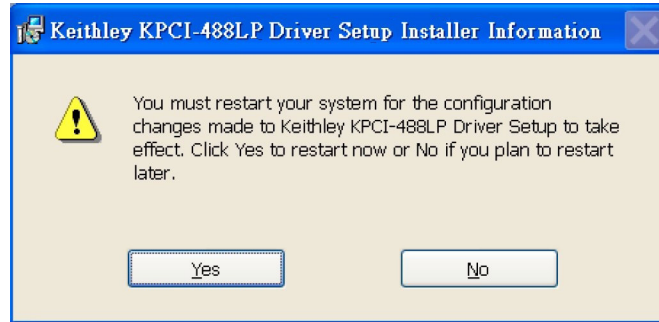
1. Insert the Keithley Instruments KPXI driver CD.
2. Allow the CD to auto run and begin the setup program. If setup does not start, open the CD using Windows Explorer and execute **setup.exe** to launch the setup program. Once the setup screen appears, click on GPIB in the left navigation menu (shown in [Figure 2-1](#)).
3. You may choose to install the Keithley Command Compatible Driver or the NI command compatible driver. Refer to Model KPXI-488 Reference Manual (KPXI-488-901-01) for available functions of either compatible driver.

Figure 2-1
InstallShield® Wizard



4. Follow the InstallShield® Wizard prompts to complete the setup procedure.
5. When setup finishes, please reboot your system.

Figure 2-2
Restart system



Hardware installation

CAUTION The Model KPXI-488 contains electro-static sensitive components that can easily be damaged by static electricity. Handle the module on a grounded anti-static mat. The operator should be wearing an anti-static wristband, grounded at the same point as the anti-static mat.

NOTE Install software *before* installing the hardware (refer to [Software installation description](#)).

Installation procedure

The following instructions outline Model KPXI-488 installation:

1. Turn off your PXI controller.
2. Turn off all accessories (printer, modem, monitor, etc.) connected to your PXI controller.
3. Make a PXI peripheral slot available by removing a slot cover if necessary.
4. Before handling the PXI cards, discharge any static buildup on your body by touching the metal case of the PXI chassis. Hold the handle and do not touch the components.
5. Position the board into the PXI slot you selected.
6. Secure the card in place by lifting the handle and tightening the top and bottom screws on the faceplate.

After completing the hardware installation procedure, install cables as desired (refer to [Cabling](#) for information).

PXI configuration

Plug-and-play

As a plug-and-play component, the card requests an interrupt number via its PCI controller (Peripheral Component Interconnect). The system BIOS (Basic Input Output System) responds with an interrupt assignment based on the card information and on known system parameters. These system parameters are determined by the installed drivers and the hardware load seen by the system.

Configuration

The board configuration is done on a board-by-board basis for all PXI boards on your system. Because configuration is controlled by the system and software, there is no jumper setting required for base-address, DMA (Direct Memory Access), and interrupt IRQ (Interrupt Request).

The configuration is subject to change with every boot of the system as new boards are added or removed.

Troubleshooting

If your system doesn't boot or if you experience erratic operation with your PXI board in place, it's likely caused by an interrupt conflict (perhaps the BIOS setup is incorrectly configured). In general, the solution — once you determine it is not a simple oversight — is to consult the BIOS documentation that comes with your system or computer.

In Windows 2000 or WinXP, if your KPXI-488 shows up in Device Manager, but has an error code which indicates that **no resources are in use**, a simple change in the BIOS may resolve the matter. The BIOS setting for **Plug-and-Play Aware OS** should be set to NO. This setting will allow the PnP BIOS and motherboard chipset hardware to assign hardware resources to cards such as the KPXI-488. Windows 2000 or WinXP will then make use of these assigned resources.

Cabling

For optimal GPIB throughput, adhere to the following bulleted cabling guidelines. These cabling guidelines include instrument number and cable distance:

- The longest distance between two devices is 4 meters; the average GPIB bus distance between all devices should be less than 2 meters.
- The total GPIB bus distance should be less than 20 meters.
- The total number of connected devices must be less than 15 (including computer itself), with at least two-thirds of the devices powered on (in a power-on status).

Users can connect devices in a linear configuration (refer to [Figure 2-3](#)), star configuration (refer to [Figure 2-4](#)), or combination of the two configurations.

NOTE *To lower the total current load of the configuration, limit the number of cable connections on each individual instrument to three or less. For example, to lower the required current load when using the configuration shown in [Figure 2-4](#), reduce the number of connections on Instrument A. Move one of the cable connections from Instrument A to a different instrument, thus making this configuration into a combination of linear and star configurations.*

Figure 2-3
Linear connection configuration

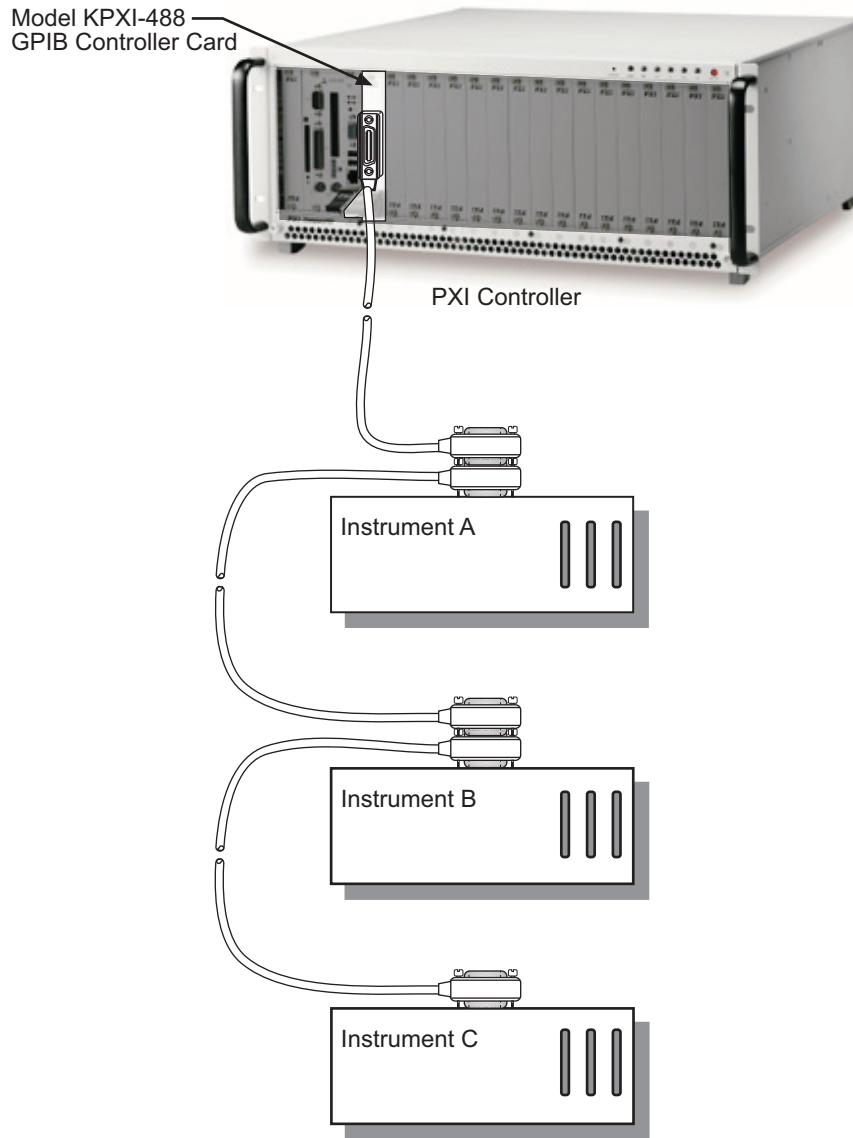
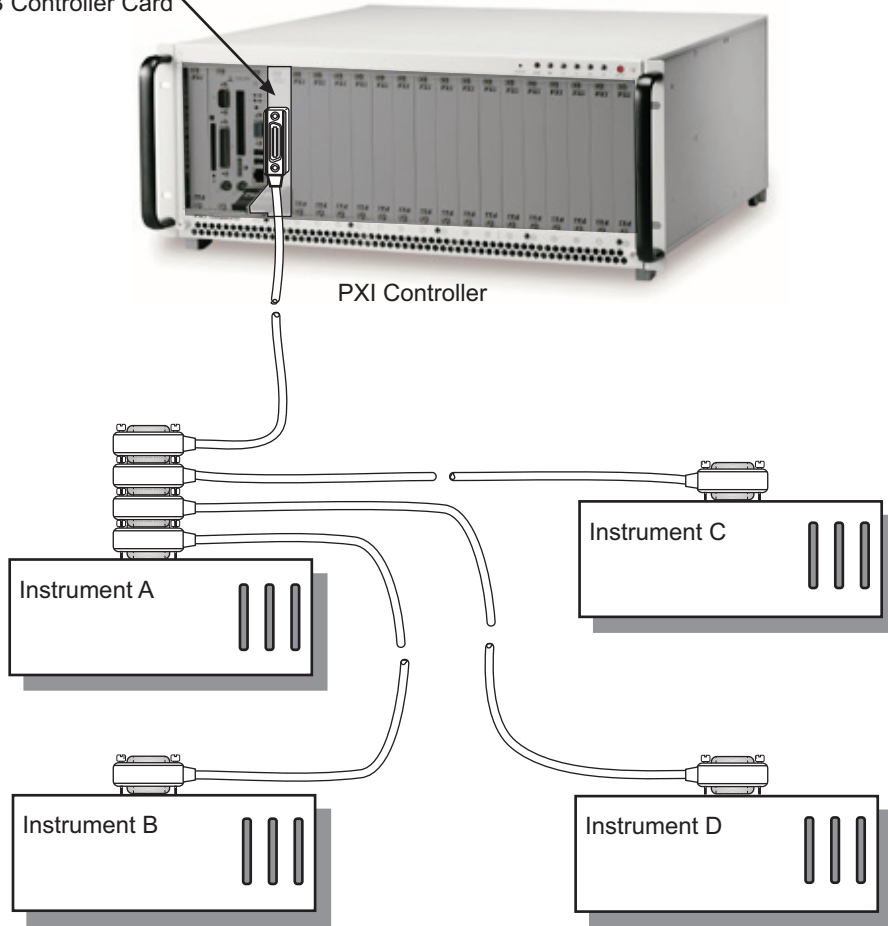


Figure 2-4
Star connection configuration

Model KPXI-488
GPIB Controller Card



Using the Keithley GPIB Configuration Utility

The driver package provides a configuration utility program (Keithley Instrument's GPIB Configuration Utility) to let you configure the KPXI-488's bus address, bus timing, I/O timeout, whether the board is a system controller, and to enable auto-polling.

To launch the configuration utility:

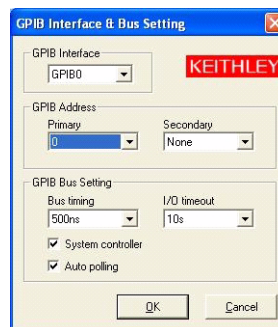
1. From Windows® **Start**, select **All Programs**.
2. From the programs selection, select **Keithley Instruments => KPXI-488 => KPXI-488 Configuration Utility**. The utility window as shown in [Figure 2-5](#) will open.

Figure 2-5
Keithley GPIB Configuration Utility



Double-clicking on the interface icon such as GPIB0 as shown in [Figure 2-5](#) opens up the KPXI-488 configuration dialog window as shown in [Figure 2-6](#). From this dialog window, you can set a variety of parameters for operating your interface board.

Figure 2-6
GPIB Interface & Bus Setting



If you change any settings, press **OK** to set the changes. Make sure to save configuration changes by going to: **Setting => Save Configuration** in the KPXI-488 Configuration Utility window.

Using the Keithley Instruments KPXI-488 Diagnostic Tool

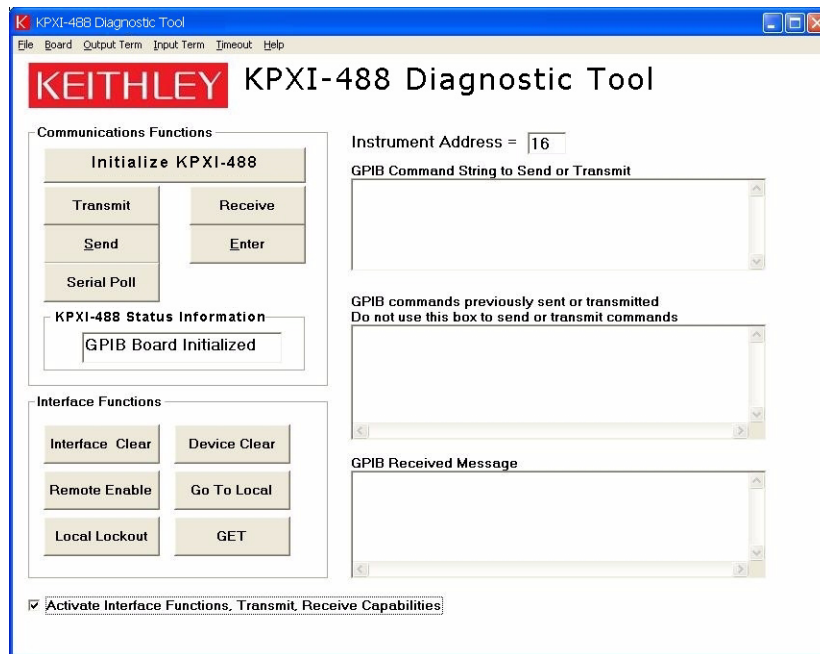
The KPXI-488 Diagnostic Tool lets you communicate with any GPIB instrument by writing command strings to your instrument and reading the results.

To launch the diagnostic tool:

1. From Windows® **Start**, select **All Programs**.
2. From the programs selection, select Keithley Instruments => KPXI-488 => KPXI-488 Diagnostic Tool.

The diagnostic tool window as shown in [Figure 2-7](#) will open.

Figure 2-7
Keithley KPXI-488 Diagnostic Tool



Prior to communicating with your instrument using the KPXI-488 Diagnostic Tool, press the **Initialize KPXI-488** button and set the required parameters. This must be done before any of the other feature buttons are enabled.

Type command strings to send to your instrument into the **GPIB Command String to Send or Transmit** box. Data returned from the instrument will be displayed in the **GPIB Received Message** box. All data strings that you send to instruments will be logged in the **GPIB commands previously sent or transmitted** box.

This page left blank intentionally.

In this section:

Topic	Page
Introduction	3-2
GPIB connection configuration	3-2
Data lines	3-3
Handshake lines	3-3
System management lines	3-3
Model KPXI-488 block diagram	3-4

Introduction

This section describes the operational theory of a GPIB (General Purpose Interface Bus) and the basic architecture of Keithley Instruments Model KPXI-488 GPIB Controller Interface Card.

GPIB connection configuration

The GPIB has 24 lines (refer to [Figure 3-1](#)). These lines can be divided into 16 signal lines and 8 ground-return or shield-drain lines (refer to [Table 3-1](#)). The 16 signal lines can be divided into a set of 8 parallel (8-bit) data transfer bus lines and a set of 8 control lines. These 8 control lines contain 5 system management lines and 3 handshake lines.

Figure 3-1
Standard GPIB connector

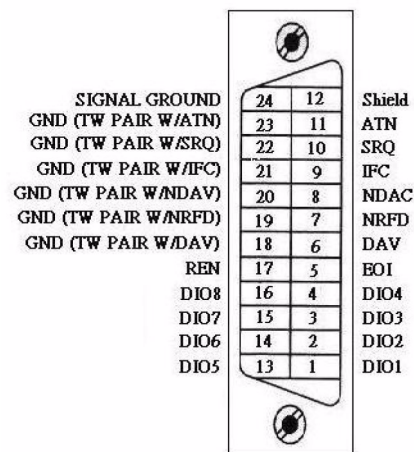


Table 3-1
GPIB connector line

GPIB BUS	Type	Function		Pin			
				No.	Description		
24 lines	16 signal lines	8 data lines		1	DIO1		
				2	DIO2		
				3	DIO3		
				4	DIO4		
				13	DIO5		
				14	DIO6		
				15	DIO7		
				16	DIO8		
		8 control lines		5 system management lines		5	EOI
						9	IFC
						10	SRQ
						11	ATN
						17	REN
		3 handshake lines				6	DAV
						7	NRFD
						8	NDAC
	8 ground lines		1 shield drain line		12	SHIELD	
			7 ground return lines		18	GND	
					19	GND	
					20	GND	
					21	GND	
					22	GND	
					23	GND	
					24	SIGNAL GROUND	

Data lines

DIO1 to DIO8 carry both data and command messages. All commands (and most data) use 7-bit ASCII code; the 8th bit (DIO8), is either unused or used for parity check.

Handshake lines

Three handshake lines control the transfer of data/messages between devices:

- **DAV (Data Valid):** used to indicate the availability and validity of information on the DIO signal lines.
- **NRFD (Not Ready For Data):** used to indicate readiness of device(s) to accept data.
- **NDAC (Not Data Accepted):** used to indicate acceptance of data by device.

System management lines

The following five system management lines manage the flow of control and data bytes across the interface:

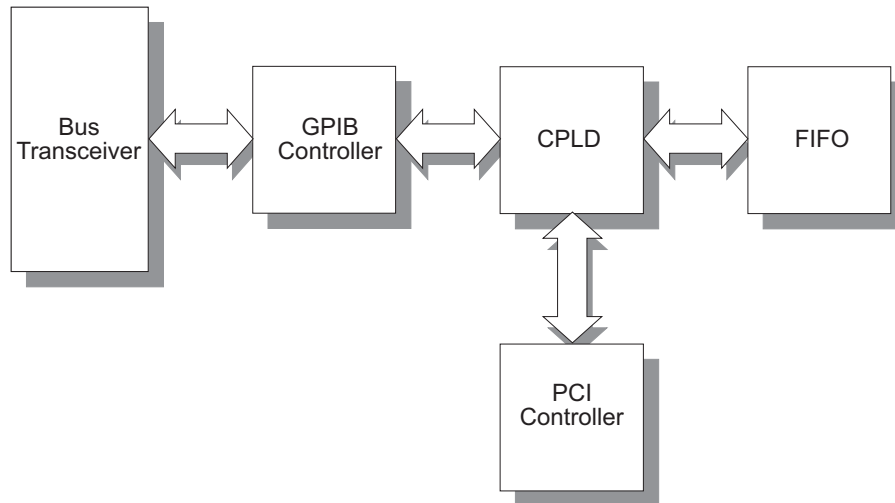
- **EOI (End or Identify):** used (by a talker) to indicate the end of a multiple-byte transfer sequence or, in conjunction with **ATN** (by a controller), to execute a polling sequence.
- **IFC (Interface Clear):** used (by a controller) to place the interface system, portions of which are contained in all interconnected devices, in a known quiescent state.
- **SRQ (Service Request):** used by a device to indicate the need for attention and to request an interruption of the current sequence of events.
- **ATN (Attention):** used (by a controller) to specify how data on the Digital I/O signal lines are to be interpreted, and which devices must respond to the data.

- **REN (Remote Enable):** used (by a controller) in conjunction with other messages to enable or disable one or more local controls that have corresponding remote controls.

Model KPXI-488 block diagram

Keithley Instruments Model KPXI-488 has a 1KB on-board FIFO buffer (First In First Out) to maximize the data transfer rate (refer to [Figure 3-2](#)). Its state-of-the-art CPLD (Complex Programmable Logical Device) coordinates the data flow between PCI controller (Peripheral Component Interconnect), FIFO buffer, and GPIB bus.

Figure 3-2
Model KPXI-488 block diagram



The FIFO can buffer data from the master (either from the Model KPXI-488 controller or external device) when the target is busy. Therefore, the efficiency will be significantly improved when transferring large blocks of data.

Appendix A
Specifications

Keithley Instruments, Inc.

28775 Aurora Road
Cleveland, Ohio 44139
(440) 248-0400
www.keithley.com

GPIB Controller Interface Card Specifications

BASIC SPECIFICATIONS

GPIB Bus Specifications:

- Up to 14 instruments connected
- Maximal 1.5MB/s data transfer rate
- Cable length:
 1. Two meters between each instrument (suggested)
 2. Twenty meters total cable length
- Data transfer mode: 8 bits parallel
- Handshake: 3-wire handshake; reception of each data byte is acknowledged

Compliance:

- Safety: European Directive 73/23/EEC, EN60950
- EMC/EMI: European Directive 89/336/EEC, EN55022, EN55024

Operating System:

- Microsoft® Windows® XP/2000

General Specifications:

- I/O connector: IEEE 488 standard 24-pin
- Operating temperature: 0°C to 55°C
- Storage temperature: -20°C to 80°C
- Relative humidity: 5% to 95%, non-condensing
- Power consumption: 400mA (typical), 750mA (maximum)
- Dimensions: 135mm x 107mm (not including connectors)

A	Addenda 1-3
	ATN (Attention) 3-3
	Average GPIB BUS distance 2-5
B	Block diagram 3-4
	Bus properties, GPIB 1-3
C	Cabling 2-5
	CD-ROM 1-4
	Certificates 1-3
	Compatibility 1-2
	Configuration (PCI) 2-4
	Connector, Standard GPIB 3-2
D	Damage, Inspection for 1-4
	Data lines 3-3
	Device drivers 1-5
	Diagnostic utility 1-5
	Dimensions 1-4
	Driver installation 2-3
	Drivers, device 1-5
E	EOI (End or Identify) 3-3
F	Features 1-2
G	General Purpose Interface Bus 3-1
	General specifications 1-4
	GPIB (General Purpose Interface Bus) 3-2
	Distance 2-5
	Properties 1-3
H	Handshake lines 3-3
	Hardware installation 2-1
I	I/O Connector 1-4
	IFC (Interface Clear) 3-3
	Inspection for damage 1-4
	Installation Procedure
	Hardware 2-4
	Software 2-2
	Instruction manual 1-4
L	Linear connection configuration 2-5, 2-6
O	ON 1-3
	On-board FIFO
	Buffer, FIFO 3-4
	Operating temperature 1-4
P	Performance 1-2
	Plug-and-play 2-4
	Polling sequence 3-3
	Power requirements 1-4
R	Relative humidity 1-4
	REN (Remote Enable) 3-4
	Repacking 1-5
S	Safety symbols and terms 1-3
	Shipment contents 1-4
	Specifications A-1
	SRQ (Service Request) 3-3
	Standard GPIB connector 3-2
	Star connection configuration 2-7
	Storage temperature 1-4
	Symbols and terms 1-3
	System management lines 3-3
T	Troubleshooting 2-5
U	Using a GPIB 3-1

This page left blank intentionally.

Model No. _____ **Serial No.** _____ **Date** _____

Name and Telephone No. _____

Company _____

List all control settings, describe problem and check boxes that apply to problem. _____

Intermittent Analog output follows display Particular range or function bad; specify

IEEE failure Obvious problem on power-up Batteries and fuses are OK

Front panel operational All ranges or functions are bad Checked all cables

Display or output (check one)

Drifts Unable to zero Unstable

Overload Will not read applied input

Calibration only Certificate of calibration required Data required

(attach any additional sheets as necessary)

Show a block diagram of your measurement including all instruments connected (whether power is turned on or not). Also, describe signal source.

Where is the measurement being performed? (factory, controlled laboratory, out-of-doors, etc.) _____

What power line voltage is used? _____ Ambient temperature? _____ °F

Relative humidity? _____ Other? _____

Any additional information. (If special modifications have been made by the user, please describe.)

Be sure to include your name and telephone number on this service form.

Specifications are subject to change without notice.
All Keithley trademarks and trade names are the property of Keithley Instruments, Inc.
All other trademarks and trade names are the property of their respective companies.



A G R E A T E R M E A S U R E O F C O N F I D E N C E

Keithley Instruments, Inc.

Corporate Headquarters • 28775 Aurora Road • Cleveland, Ohio 44139 • 440-248-0400 • Fax: 440-248-6168 • 1-888-KEITHLEY • www.keithley.com