

SPECIFICATION FOR APPROVAL

Customer name : **Kontron**
Customer P/N :
Item description : **Chip Cooler**
ADDA Model No. : **G072**
Revision : **Rev. 0**
Date : **Oct. 19, 2016**

Customer	Approved		
	Date :		
ADDA	Approve	Check	Prepare
	Mika		Eric
	Date: Oct. 19, 2016	Date: Oct. 19, 2016	Date: Oct. 19, 2016



ADDA CORPORATION

<http://www.adda.com.tw>

ADDA responsible sales information :

E-mail : frankliaw@adda.com.tw

Tel: 886-2-8698-4160(121)

Fax:886-2-8698-4222



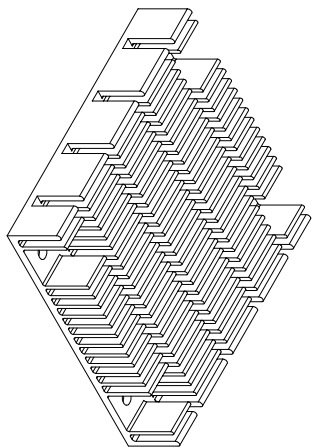
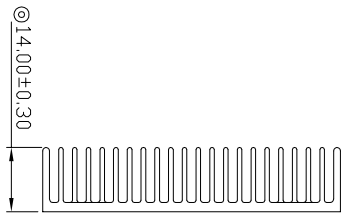
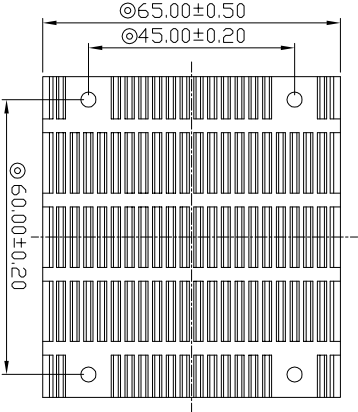
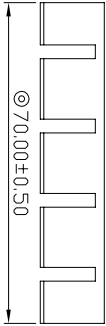
ADDA CORPORATION

G072

REV:0

Version of the sequence control table

Revision	Change Content	Change page	Prepare	Change Date	Remarks
0	Created SPEC		Eric	2016/10/19	



NOTE:

1. \varnothing IS CRITICAL DIMENSION SIGN
2. MUST BE ROHS COMPLIANT
3. VISUAL QUALITY IN ACCORDANCE WITH ADDA CORPORATION SPECIFICATION
4. TOLERANCE: UNLESS OTHERWISE SPECIFIED, PLEASE FOLLOW THIS TABLE

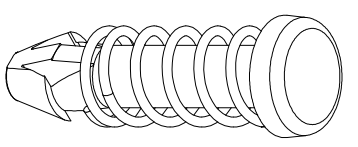
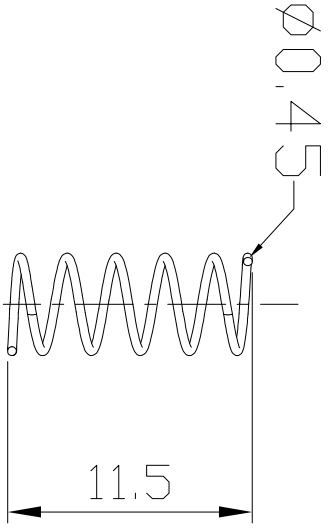
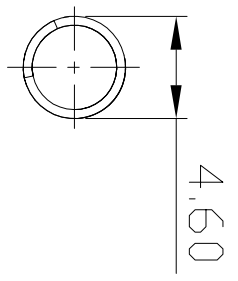
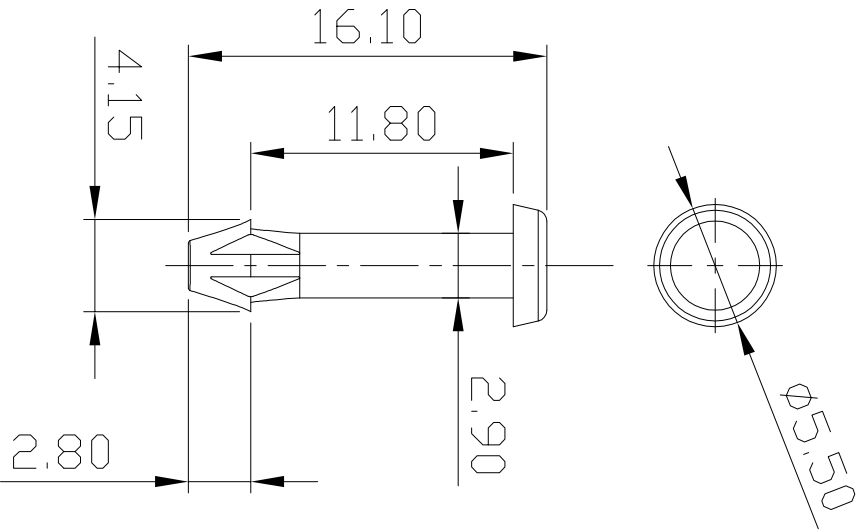
GENERAL DIMENSION	TOLERANCE	REFINED	MIDDLE	ROUGH
< 5mm		±0.06	±0.12	±0.2
5mm~60mm		±0.15	±0.2	±0.3
60mm~200mm		±0.25	±0.35	±0.7
> 200mm		±0.5	±1.0	±2.0
USED				✓

(TAIPEI THERMAL DEPT.)

Model No. G072		PART No. DHC No.	
DESCRIPTION Heat sink			
MATERIAL	AL6063	RoHS compliant	
FINISH	Clean		
SCALE	1:1 mm	QTY/SET	1
PROJECTION		UNLESS OTHERWISE SPECIFIED, THE FOLLOWING APPLIES: GENERAL WALL THICKNESS= MM; DRAFTS= DEG. TOLERANCE LINEAR MM; ANGULAR: DEG. IMPORTANT, DO NOT SCALE DRAWING, ASK IN CASE OF QUERY	
DWN. BY	Eric	CHKD BY	APPD BY
		ADDA CORPORATION	
		禁止使用有害環境物質 符合 SONY SS-00259 技術標準要求	

REVISIONS

A B C D E F G H 1 2 3 4 5 6 7 8



NOTE:

1. ◎ IS CRITICAL DIMENSION SIGN
2. MUST BE ROHS COMPLIANT
3. VISUAL QUALITY IN ACCORDANCE WITH ADDA CORPORATION SPECIFICATION
4. TOLERANCE: UNLESS OTHERWISE SPECIFIED, PLEASE FOLLOW THIS TABLE

Effective turn: 5.2

GENERAL DIMENSION	REFINED	MIDDLE	ROUGH
0mm~5mm	±0.06	±0.12	±0.2
5mm~60mm	±0.15	±0.2	±0.3
60mm~200mm	±0.25	±0.35	±0.7
> 200mm	±0.5	±1.0	±2.0

USPD

(VALPEI THERMAL DEPP.)

OUTSIDE DIAMETER D	4.6 mm
WIRE DIAMETER d	0.45 mm
FREE LENGTH L	11.5 mm
SPRING CONSTANT K	0.11 kgf/mm
Number of active coils (N ₀)	5.2
Total number of coils (N)	7.2

Model No.	G072	Part No.	
DESCRIPTION	PUSHPIN		
MATERIAL	Nylon(BLACK)+SWC(Nickel)		
FINISH	N/A	屬性:	Etic

UNLESS OTHERWISE SPECIFIED, THE FOLLOWING APPLIES:
 GENERAL WALL THICKNESS = MM; DRAFTS = DEG.
 TOLERANCE LINEAR MM; ANGULAR: DEG.
 IMPORTANT, DO NOT SCALE DRAWING, ASK IN CASE OF QUERY

SCALE	1:1 mm	QTY/SET	1	CHKD BY	APPD BY
PROJECTION		APPD BY			
DWN. BY	Etic	APPD BY			

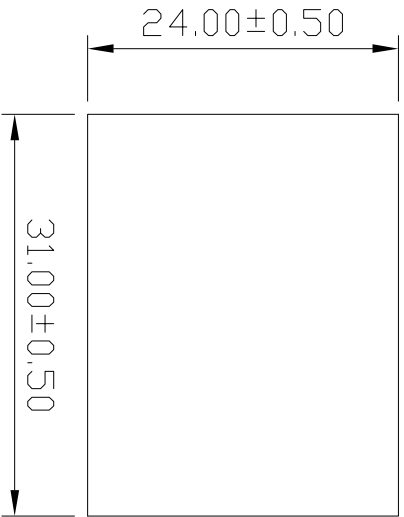


ADDA CORPORATION

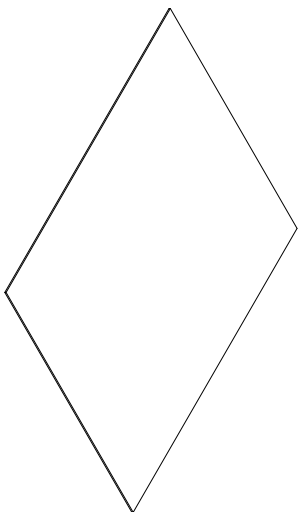
禁止使用有毒環境物質
符合 RoHS SS-00259 技術標準要求

REVISIONS

8	A	
7	B	
6	C	
5	D	
4	E	
3	F	
2	G	
1	H	



$t=0.12\text{ mm}$



NOTE:

1. IS CRITICAL DIMENSION SIGN
2. MUST BE ROHS COMPLIANT
3. VISUAL QUALITY IN ACCORDANCE WITH ADDA CORPORATION SPECIFICATION
4. TOLERANCE:
UNLESS OTHERWISE SPECIFIED,
PLEASE FOLLOW THIS TABLE

GENERAL TOLERANCE DIMENSION	REFINED	MIDDLE	ROUGH
< 5mm	±0.06	±0.12	±0.2
5mm~60mm	±0.15	±0.2	±0.3
60mm~200mm	±0.25	±0.35	±0.7
> 200mm	±0.5	±1.0	±2.0
USPD		✓	

(TAIPEI THERMAL DEPT.)

Model No.	G072	PART No.	
DESCRIPTION	PAD	DWG No.	
MATERIAL	T-725	RoHS compliance	6
FINISH	N/A		7
SCALE	1:1 mm	UNLESS OTHERWISE SPECIFIED, THE FOLLOWING APPLIES: GENERAL WALL THICKNESS = TOLERANCE LINEAR IMPORTANT: DO NOT SCALE DRAWING/ASK IN CASE OF QUERY	8
PROJECTION	1	MM; ANGULAR: DEG.	
DWN BY	Eytic	CHKD BY	APPD BY
ADDA CORPORATION 禁止使用有害環境物質 符合 SONY SS-00259 技術標準要求			

REVISIONS

A B C D E F G H

8

7

6

5

4

3

2

1

8

7

6

5

4

3

2

1