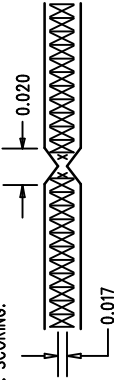


NOTES : Unless Otherwise Specified

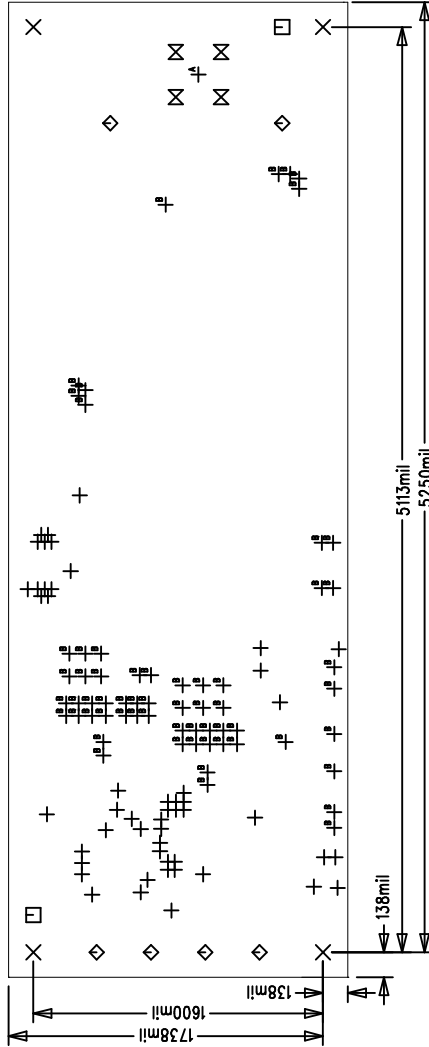
1. FAB PER IPC-A-600.
2. MATERIAL: EPOXY FIBERGLASS, NEMA GRADE FR-4, 4 OZ. COPPER THICKNESS .062 +/- .006 TOTAL OF 4 LAYERS.
FLAMABILITY RATING: 94 V-0 MINIMUM .
3. DRILLING: DRILL HOLES PER SCHEDULE. PLATE THROUGH HOLES WITH COPPER, .001 INCH THICK MIN. ALL HOLE SIZES ARE SPECIFIED AFTER PLATING.
HOLE LOCATION TOLERANCES ARE +/- .003 INCH IN RELATION TO CENTER

4. SOLDER MASK : SMOBC USING LPI BOTH SIDES COLOR GREEN.
5. SILKSCREEN : USING WHITE NON-CONDUCTIVE EPOXY INK.
6. DO NOT ALTER ARTWORK e.g. TO ADD LOGO OR DATE CODE.
7. SCORING:



8. PLUG VIAS. (Hole sizes 15 & 25)

Demo Board 477 Rev A
LT1683EG



SIZE	QTY	SYM	PLTD
15	51	+	PLTD
125	4	×	PLTD
70	2	□	NPLTD
94	6	◇	PLTD
52	4	⊠	PLTD
59	1	A	PLTD
25	62	B	PLTD

FAB DRAWING

APPROVALS		REV. A		REV. A	
INIT	DATE	SIZE	DEMO CIRCUIT	477	REV. A
DRAWN					
CHECK					
DESIGN	Rudy B				
ENGR					
SCALE = NONE		DES-230567		SHT 1 of 1	

LINEAR TECHNOLOGY
1630 McCarthy Blvd.
Milpitas, CA 95035
PH: (408)432-1900

TITLE: LT1683EG, Low Noise/EMI Switching Power Supply