

SECTION 4 - PARTS LIST

4-1 GENERAL

This section contains the part numbers and descriptions for replaceable parts in the 2975.

	Page
Accessories	4-2
Composite Assy.....	4-4
Chassis Assy	4-5
CPU Adapter Assy	4-7

4-2 PARTS LISTS

4-2-1 ACCESSORIES (Figure 4-1)

REFERENCE DESIGNATOR	PART NUMBER	MFR CODE	DESCRIPTION
1	1002-4250-4P0	51190	MANUAL, MAINTENANCE, 2975
2	1002-4250-4C0	51190	CD-ROM, MANUAL, MAINTENANCE, 2975
3	1002-4202-2P0	51190	MANUAL, OPERATION, 2975
4	1002-4202-2C0	51190	CD-ROM, MANUAL, OPERATION, 2975
5	1412-4752-000	51190	ACCESSORY POUCH
6	1412-4400-500	51190	CASE, SOFT-PADDED, CARRYING
7	1414-4452-900	51190	COVER, LID
8	1412-4200-300	51190	CASE, TRANSIT w/ WHEELS
9	6041-0001-200	51190	CORD, AC, NEMA5-15, IEC320-C13, RA
10	2113-0000-004	51190	CONN, ADAPT BNC JACK/N PLUG
11	2200-0410-700	51190	CONN, ADAPT BNC JACK - TNC PLUG
12	1201-0909-900	51190	ANTENNA
13	5106-0000-055	51190	FUSE, 3AMP, FAST, 5MMX20MM, 250V
14	2113-0000-013	51190	CONN, ADAPT, M2F BNC, RT. ANGLE
15	6045-4283-300	51190	CABLE, RJ12, 6 COND, FLAT, 1-1
16	6041-4201-200	51190	CABLE ASSY, OPT12 KVL INTERFACE
17	7005-4247-800	51190	MICROPHONE

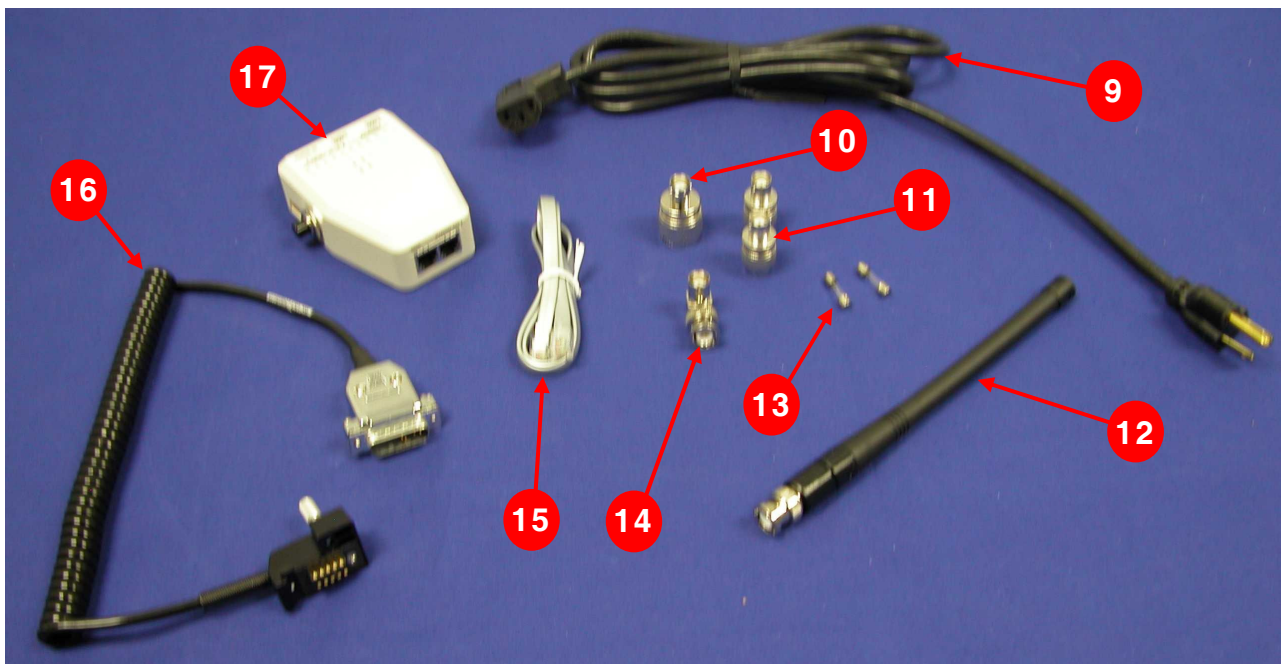
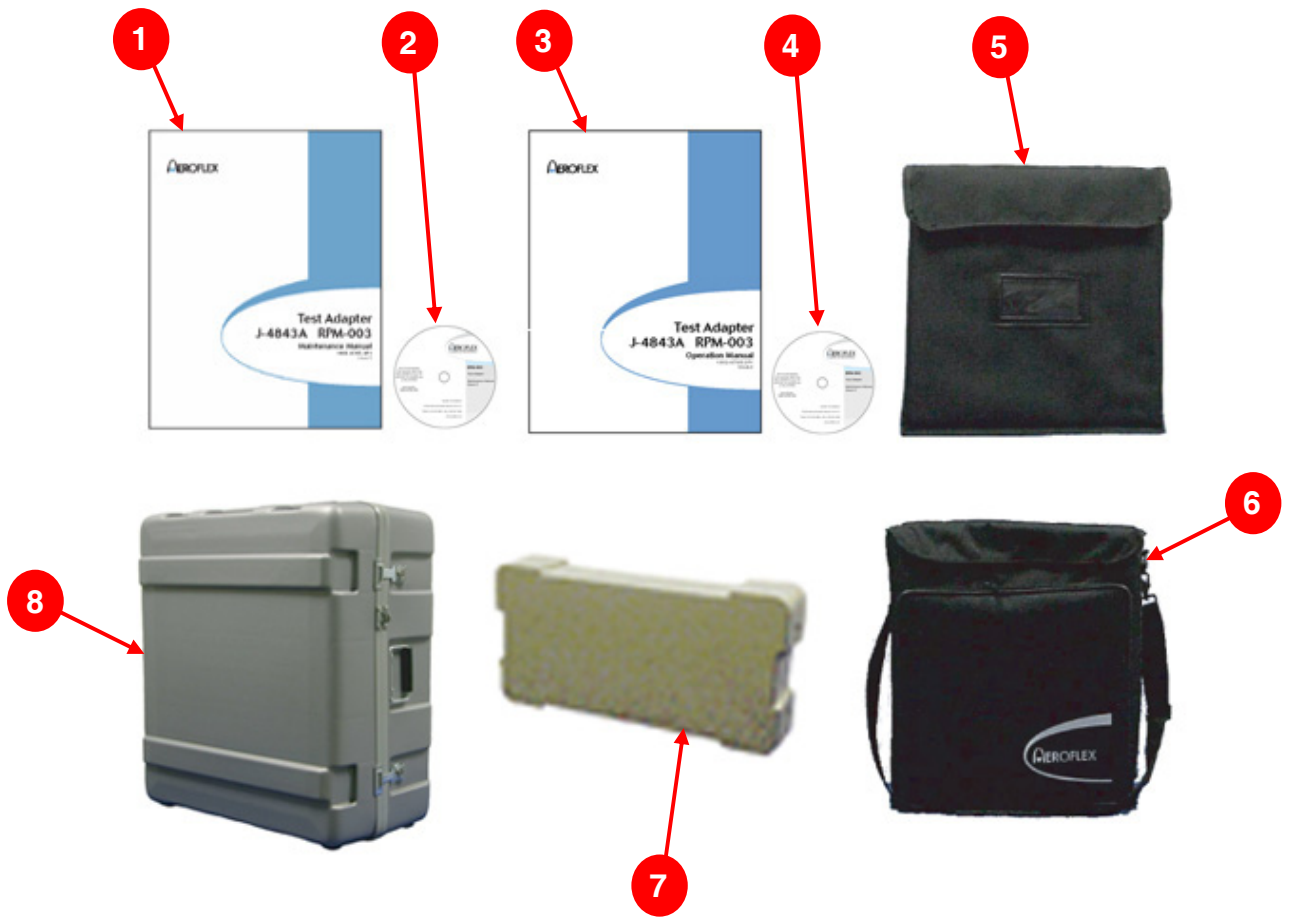


Figure 4-1 Accessories

4-2-2 COMPOSITE ASSY (7003-4248-500) (Figure 4-2)

(REV C)

REFERENCE DESIGNATOR	PART NUMBER	DESCRIPTION
1	1412-4254-900	CASE, WRAP
2	2803-0188-012	SCREW, 4-40 X 3/16 PPHM, BLACK
3	2803-0188-006	SCREW, 4-40 X 3/16 PPHM
4	2803-0563-012	SM, 4-40X9/16, PPH, SS, BK
5	2840-0000-034	WASHER, FLAT .505ID, .6850D, .02
6	2400-9924-600	LABEL, S/N, RCTS-P25
A1	7005-4243-900	MECH ASSY, CHASSIS
A2	7005-4248-400	MECH ASSY, REAR PANEL
A3	7005-4243-100	MECH ASSY, ATTENUATOR
A4	7005-4442-500	MECH ASSY, GENERATOR
A5	7010-4236-800	PCB ASSY, IF VIDEO
A6	7010-4236-700	PCB ASSY, MULTIFUNCTION I/O
A7	7005-4248-100	MECH ASSY, RECEIVER
A8	7010-4232-900	PCB ASSY, CAI
A9	7110-4246-800	MOLDED HANDLE
W1	6050-1990-500	COAX ASSY, 316, RFSSMB/RFSSMB
W2	6050-1990-350	COAX ASSY, 316, RFSSMB/RFSSMB
W3	6050-1990-600	COAX ASSY, 316, RFSSMB/RFSSMB
W4	6050-1990-950	COAX ASSY, 316, SSMB RA/SSMB RA
W5	6050-1990-300	COAX ASSY, 316, RFSSMB/RFSSMB
W6	6061-1990-300	COAX ASSY, 100, RFSSMB/RFSSMB
W7	6061-1990-300	COAX ASSY, 100, RFSSMB/RFSSMB
W8	6061-1990-300	COAX ASSY, 100, RFSSMB/RFSSMB
W9	6042-4283-100	COAX ASSY, ATT/GEN

(REV D) CONTAINS ALL PARTS IN REV C WITH THE FOLLOWING EXCEPTIONS:

REFERENCE DESIGNATOR	PART NUMBER	DESCRIPTION
A4	7005-4444-200	MECH ASSY, GENERATOR

(REV E) CONTAINS ALL PARTS IN REV D WITH THE FOLLOWING EXCEPTIONS:

REFERENCE DESIGNATOR	PART NUMBER	DESCRIPTION
A4	7005-4249-000	MECH ASSY, GENERATOR

4-2-3 CHASSIS ASSY (7005-4243-900) (Figure 4-3)

(REV G)

REFERENCE DESIGNATOR	PART NUMBER	DESCRIPTION
1	1403-4255-000	CHASSIS,MAIN
2	1400-4266-700	BRACKET,CARD CAGE
3	1405-4266-800	PANEL,CHASSIS REAR
4	1400-4259-300	BRACKET,SPEAKER
5	1400-4259-400	BRACKET,POWER SUPPLY MTG
6	2803-0188-003	SCREW,4-40 X 3/16 PFHM
7	2803-0250-003	SCREW,4-40 X 1/4 PFHM
8	2803-0250-006	SCREW,4-40 X 1/4 PPHM
9	2803-0188-006	SCREW,4-40 X 3/16 PPHM
10	1400-4255-500	BRACKET,FAN
11	2850-1692-600	SCREW,.340L35-6.25HH,4-40X.410
12	2850-7866-300	STANDOFF,HEX,MALE-FEMALE
13	2840-7873-000	WASHER, LOCK .50ID INT STAR
14	2807-0157-006	SM,M2.5X4MM,PPH,SS,PA
15	2803-0563-012	SM,4-40X9/16,PPH,SS,BK
16	2850-7800-100	NUT, JAM 1/2" SMALL PROFILE
17	2803-1000-006	SCREW 4-40 X 1 PBHMS
18	2845-0000-008	FINGERSTOCK,97-0611-17
19	4503-0002-010	RETAINER CLIP,10P RIBBON CONN
20	2525-4269-400	GASKET, POWER TERM/FT PNL
21	2525-4269-200	GASKET, REAR PANEL I/O
A1	7010-4236-100	PCB ASSY,BACKPLANE
A2	7010-4238-700	PCB ASSY,FRONT PANEL AUDIO
A3	7010-4233-800	PCB ASSY,REAR PANEL
A4	7005-4243-700	MECH ASSY,FRONT PANEL
A5	7005-4243-500	MECH ASSY,CPU ADAPTER
A6	7005-4243-400	MECH ASSY,POWER SUPPLY
A7	7005-4242-500	MECH ASSY,POWER TERM
A8	7110-4244-400	PURCH,ASSY,FLOPPY DRIVE
A9	7010-4232-800	PCB ASSY,DISK I/O
B1	7005-4244-600	MECH ASSY,FAN
LS1	7007-4282-700	WIRE HARN ASSY,SPEAKER
W1	6045-4282-600	RIBBON CA ASSY,10-C,8.3LG
W2	6045-4282-600	RIBBON CA ASSY,10-C,8.3LG
W4	6045-4282-800	RIBBON CA ASSY,TYPE 1
W5	6045-4282-900	RIBBON CA ASSY,GPIB
W6	6044-2111-400	COAX ASSY,CONF,SMSMA/RFSSMB
W7	6044-2101-100	COAX ASSY,CONF,RFSSMB/RFSSMB
W8	6050-2081-650	COAX ASSY,316,RFSSMB/SFSMB
W9	6050-2081-650	COAX ASSY,316,RFSSMB/SFSMB

4-2-3 CHASSIS ASSY (7005-4243-900) (Figure 4-3) (cont)

(REV G) (cont)

REFERENCE DESIGNATOR	PART NUMBER	DESCRIPTION
W10	6050-2081-650	COAX ASSY,316,RFSSMB/SFSMB
W11	6048-0000-100	CABLE ASSY,FFC,TYPE D,38MM

(REV H) CONTAINS ALL PARTS IN REV G WITH THE FOLLOWING EXCEPTIONS:

REFERENCE DESIGNATOR	PART NUMBER	DESCRIPTION
A5	7010-4238-800	PCB ASSY,CPU ADAPTER

(REV J) CONTAINS ALL PARTS IN REV H WITH THE FOLLOWING EXCEPTIONS:

REFERENCE DESIGNATOR	PART NUMBER	DESCRIPTION
22	1414-9950-500	PLATE,37P,D-SUB
W4	6045-4282-800	RIBBON CA ASSY,TYPE 1 (Removed)

4-2-4 CPU ADAPTER ASSY (Figure 4-4)

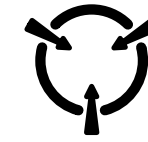
(7005-4243-500) (REV F)

REFERENCE DESIGNATOR	PART NUMBER	DESCRIPTION
BT1	4000-0014-000	BATTERY, LITHIUM, 3 V

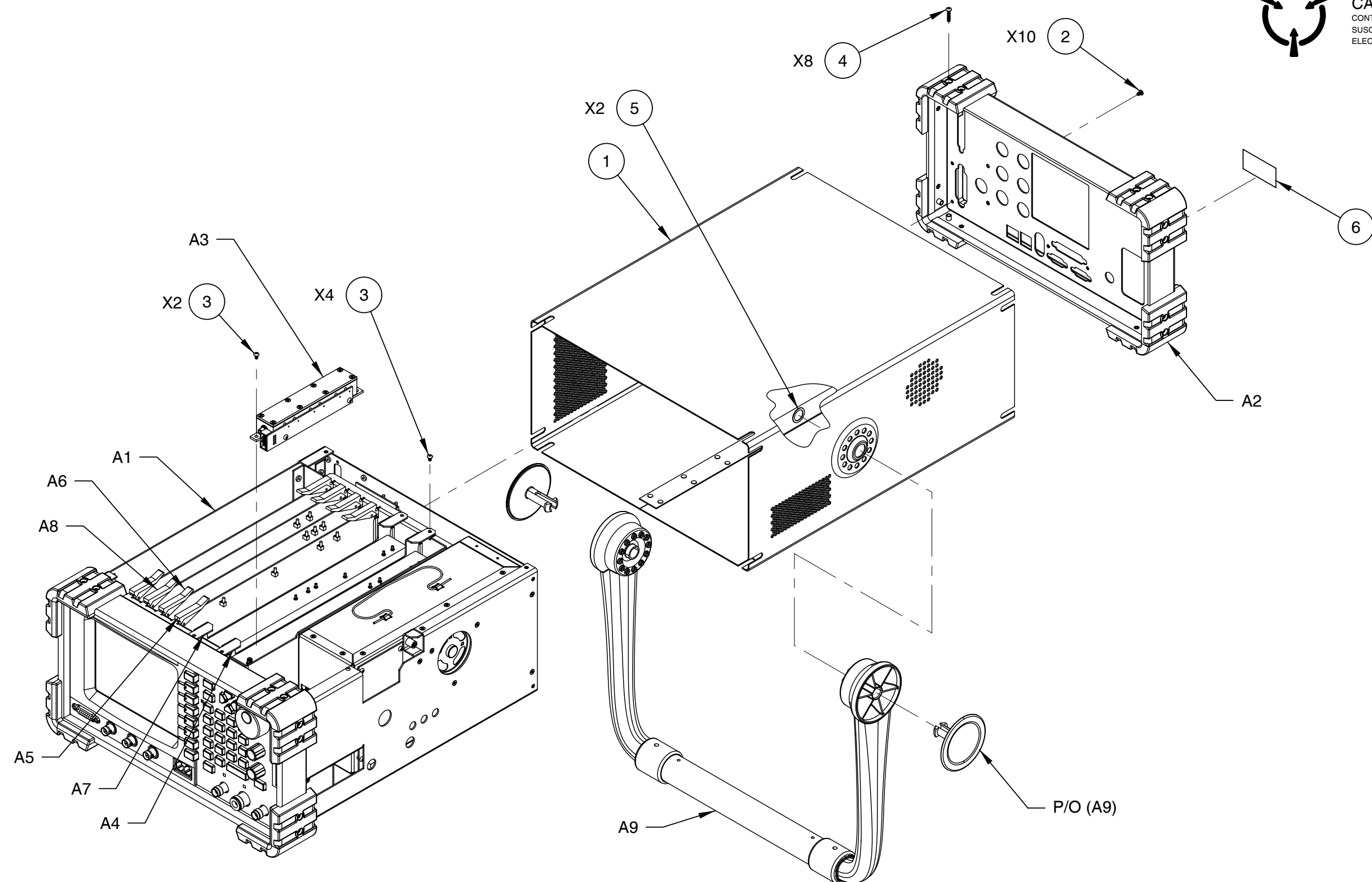
(7010-4238-800) (REV C)

REFERENCE DESIGNATOR	PART NUMBER	DESCRIPTION
BT1	4000-0014-000	BATTERY, LITHIUM, 3 V

THIS PAGE INTENTIONALLY LEFT BLANK.

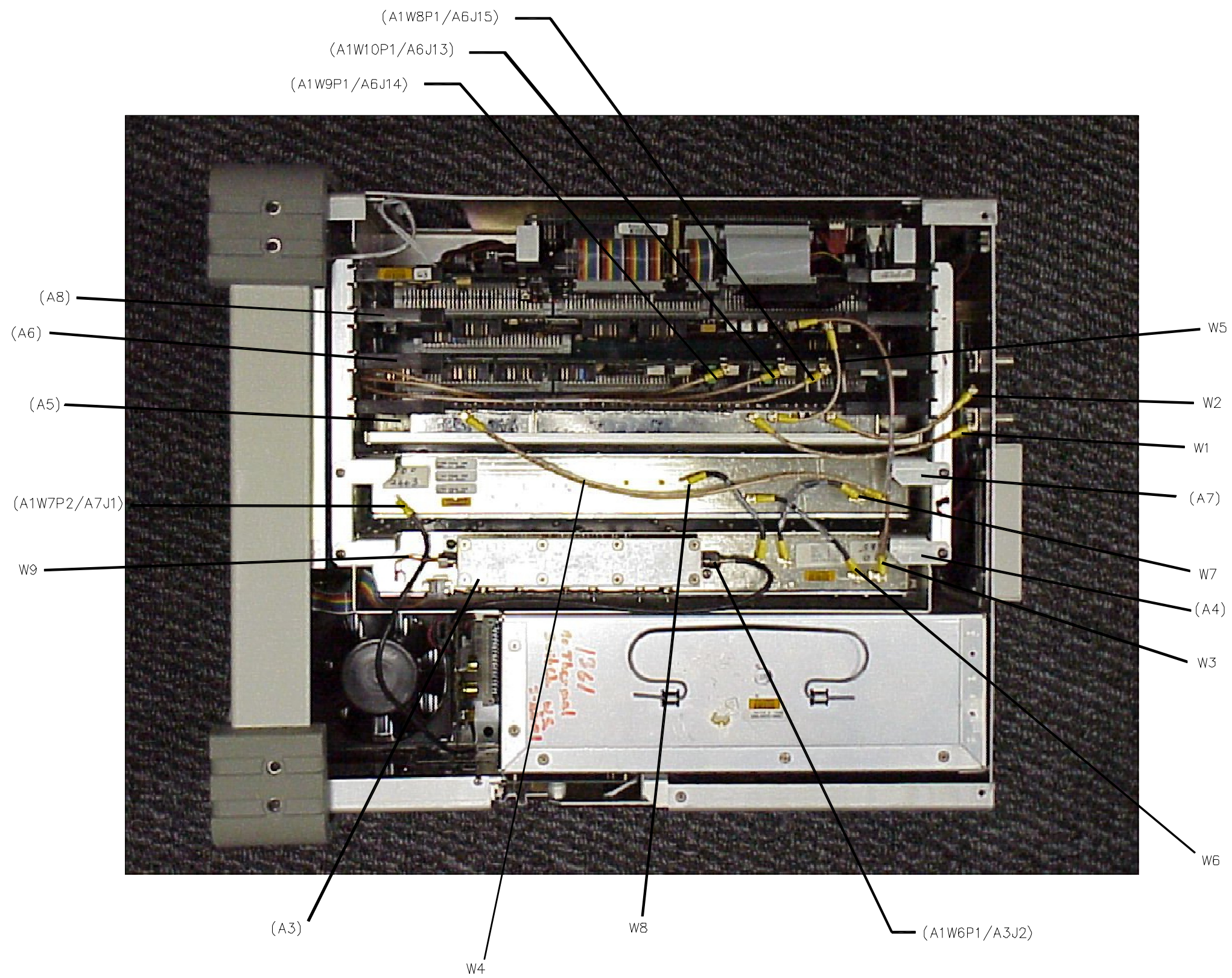


CAUTION:
CONTAINS PARTS AND ASSEMBLIES
SUSCEPTIBLE TO DAMAGE BY
ELECTROSTATIC DISCHARGE (ESD).



042M-036

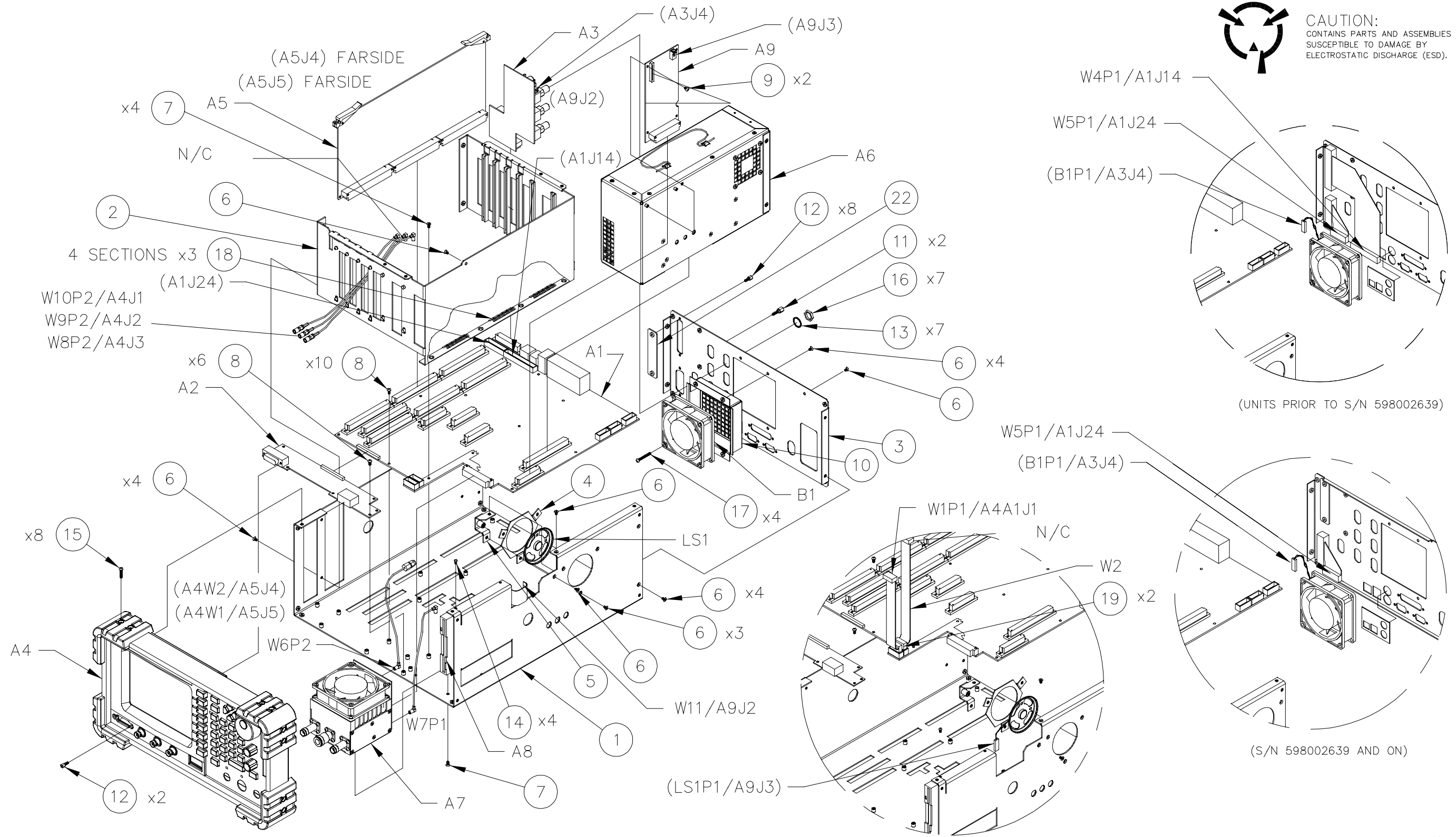
Figure 4-2 2975 Composite Assy



COAX RUNNING LIST		
DESC	FROM	TO
W1	A5J5	A1A3J2
W2	A5J7	A1A3J3
W3	A8J7	A4J4
W4	A5J3	A7J8
W5	A8J6	A5J5
W6	A7J4	A4J3
W7	A7J7	A4J6
W8	A7J3	A4J5

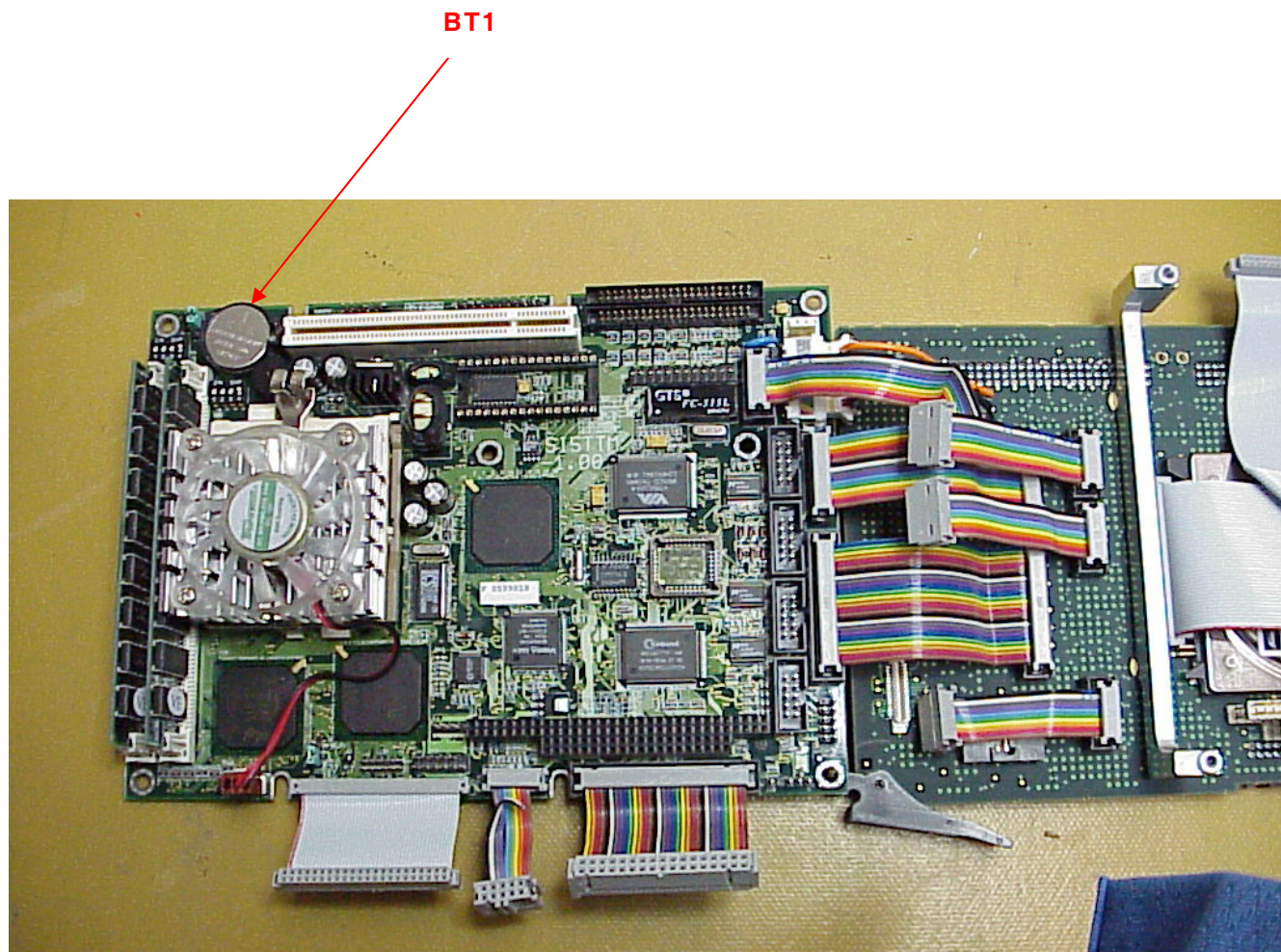
042M-035

Figure 4-2 2975 Composite Assy (cont)

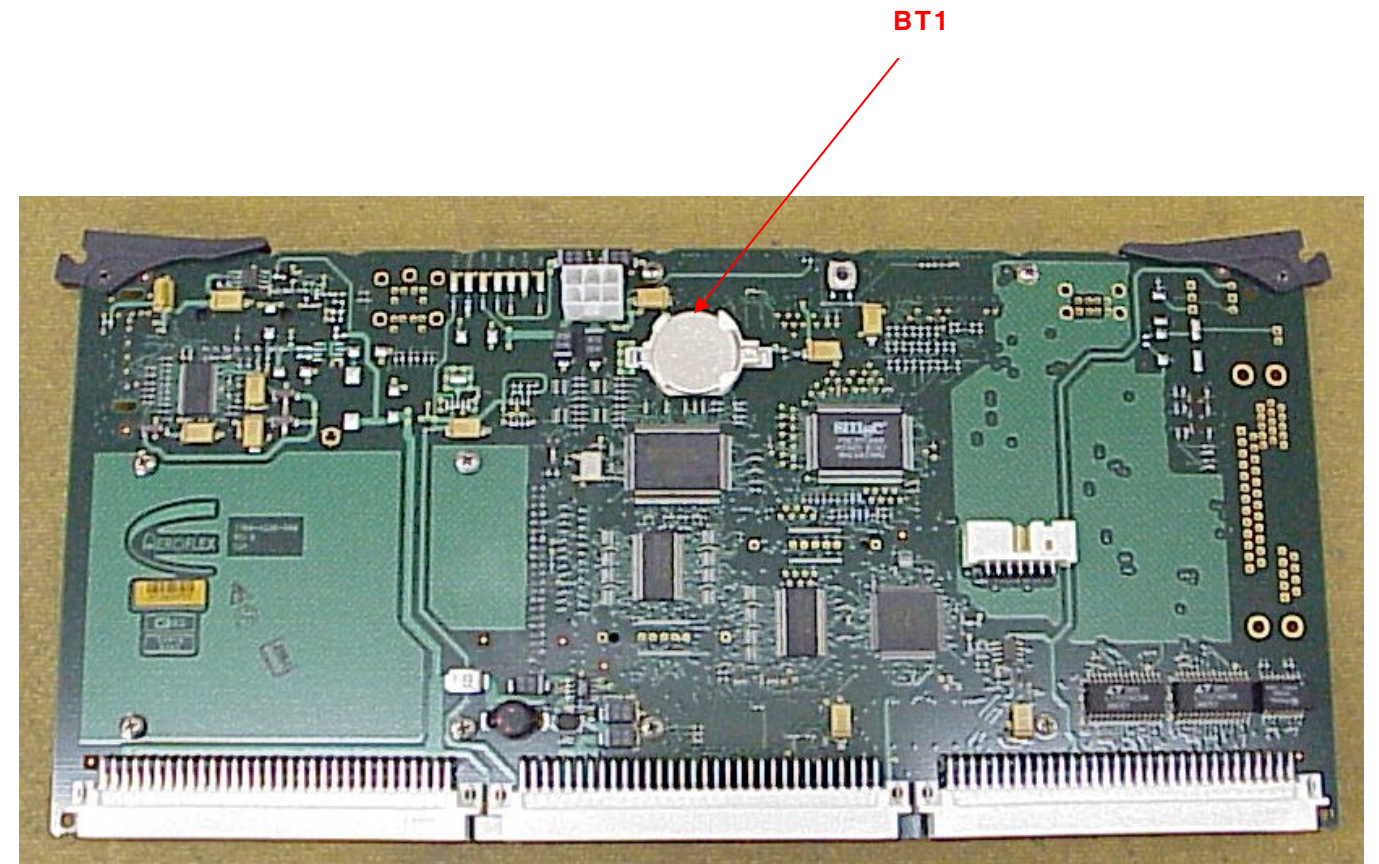


042M-034

Figure 4-3 2975 Chassis Assy



(7005-4243-500)



(7010-4238-800)

Figure 4-4 CPU Adapter Assy