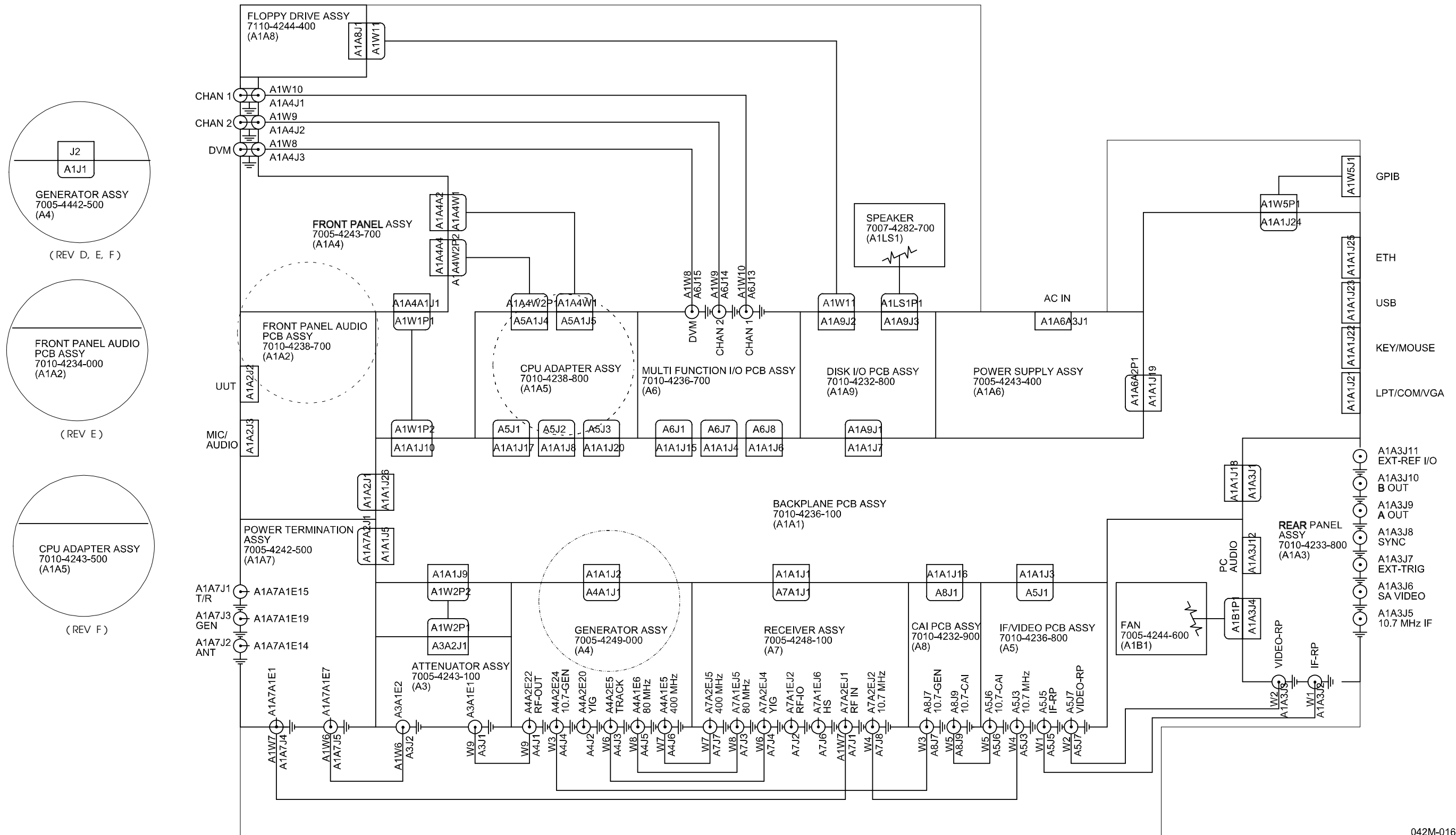


## SECTION 5 - ASSEMBLIES

FIGURE	TITLE	PAGE
5-1	2975 System Interconnect (0000-4242-000) (42)	5-3
5-2	Chassis Assy (7005-4243-900) (42A1A1)	5-4
5-3	Backplane PCB Assy (7010-4236-100) (42A1A1A1)	5-5
5-4	Front Panel Audio PCB Assy (0000-4234-000) (7010-4234-000)* (42A1A1A2)	5-10
	(7010-4238-700) (42A1A1A2)	5-10
5-5	Rear Panel PCB Assy (7010-4233-800) (42A1A1A3)	5-11
5-6	Front Panel Assy (7005-4243-700) (42A1A1A4)	5-12
5-7	CPU Adapter Assy (7005-4243-500)* (42A1A1A5)	5-13
	(7010-4238-800) (42A1A1A5)	5-13
5-8	Power Supply Assy (7005-4243-400) (42A1A1A6)	5-14
5-9	Power Termination Assy (7005-4242-500) (42A1A1A7)	5-15
5-10	Floppy Drive Assy (7110-4244-400) (42A1A1A8)	5-16
5-11	Disk I/O PCB Assy (7010-4232-800) (42A1A1A9)	5-17
5-12	Rear Panel Assy (7005-4243-800) (42A1A2)	5-18
5-13	Attenuator Assy (7005-4243-100) (42A1A3)	5-19
5-14	Generator Assy (7005-4242-600)* (42A1A4)	5-20
	(7005-4442-500)* (42A1A4)	5-20
	(7005-4444-200)* (42A1A4)	5-20
	(7005-4249-000) (42A1A4)	5-20
5-15	IF/Video PCB Assy (7010-4236-800) (42A1A5)	5-21
5-16	Multifunction I/O PCB Assy (7010-4236-700) (42A1A6)	5-22
5-17	Receiver Assy (7005-4248-100) (42A1A7)	5-23
5-18	CAI PCB Assy (7010-4232-900) (42A1A8)	5-24
5-19	Handle Assy (7110-4246-800) (42A1A9)	5-25

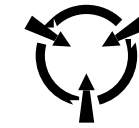
**NOTE:** Asterick (\*) indicates an Assy that is obsolete or has been replaced.

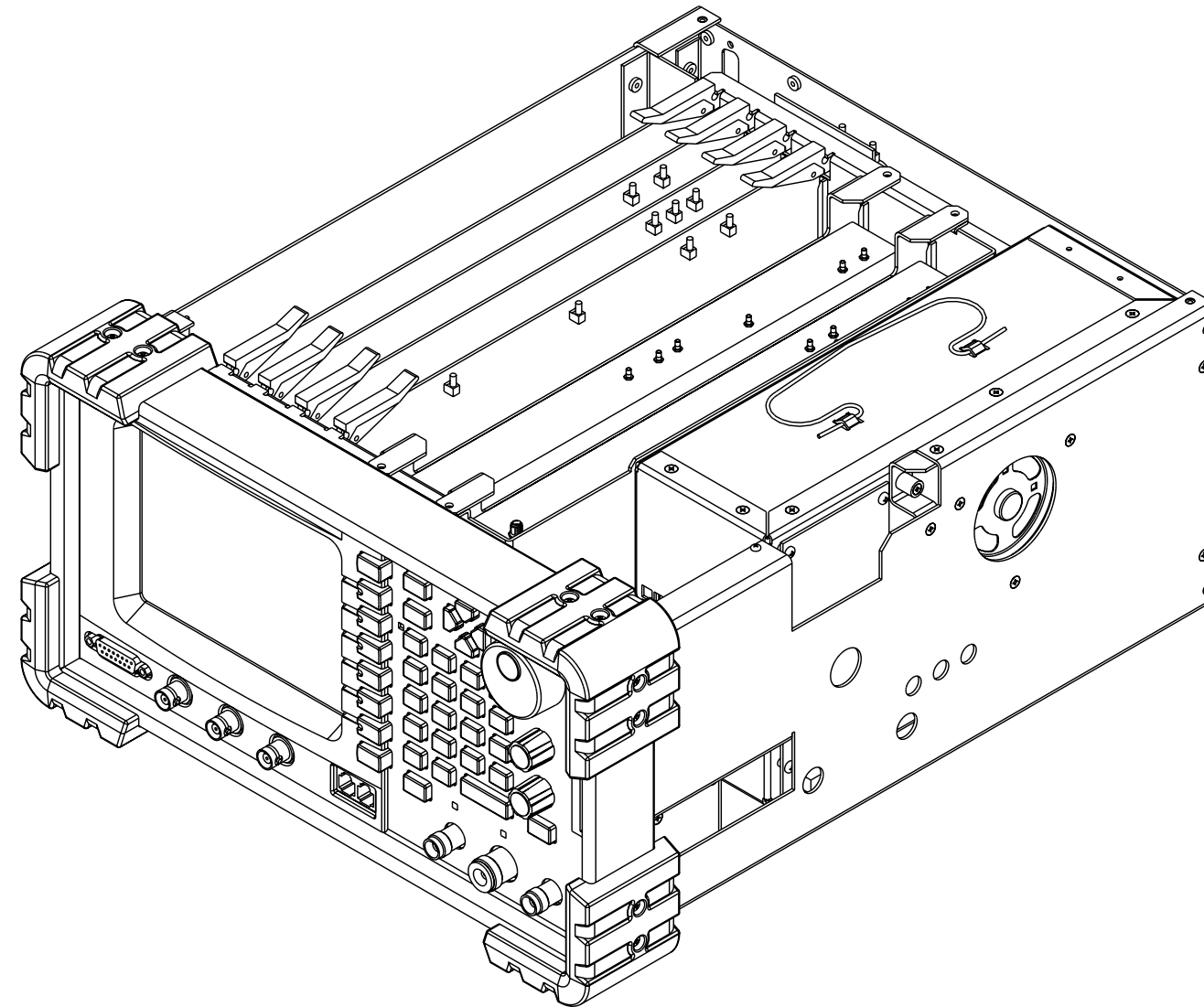
THIS PAGE INTENTIONALLY LEFT BLANK.



042M-016

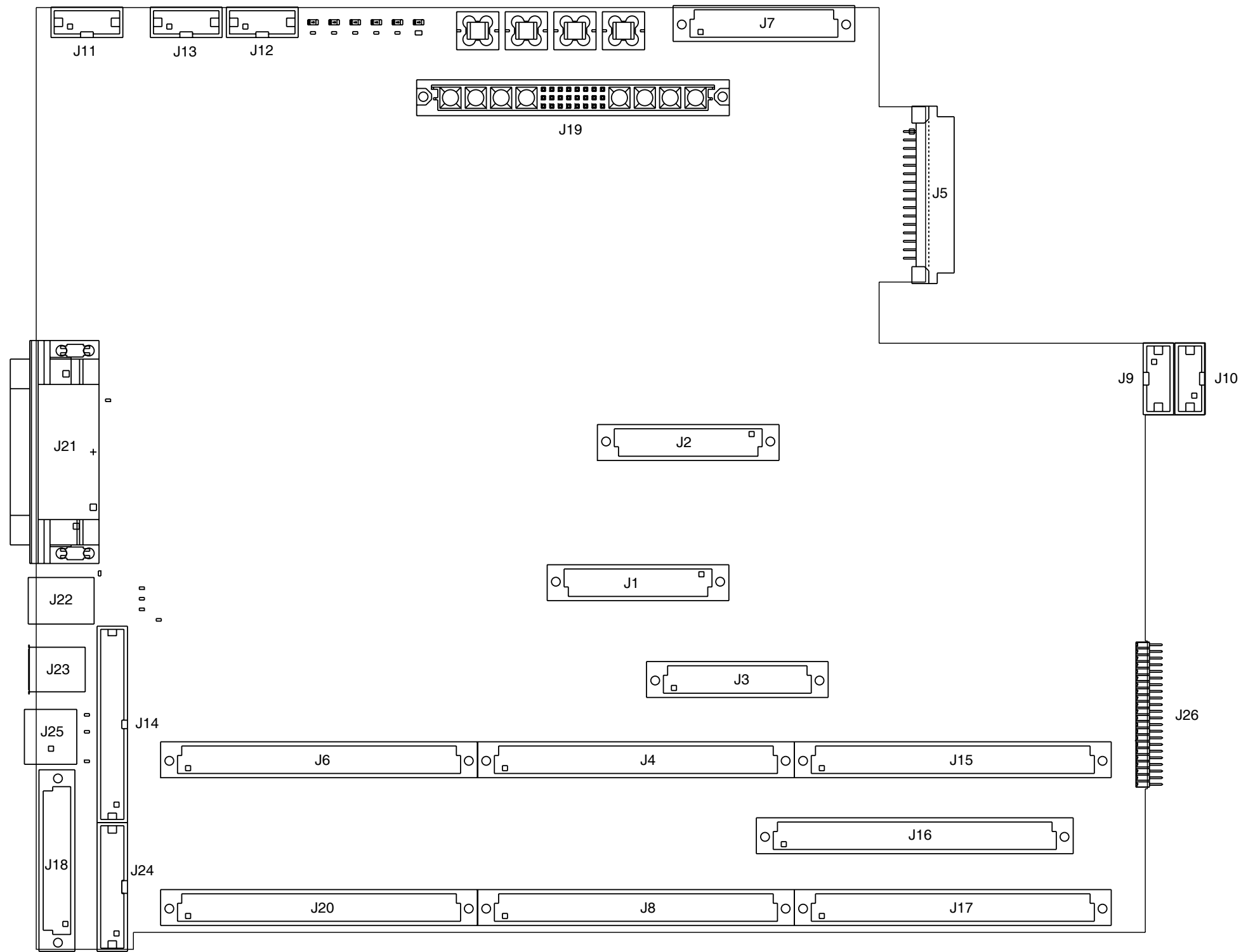
Figure 5-1 2975 System Interconnect (0000-4242-000-G)

 **CAUTION:**  
CONTAINS PARTS AND ASSEMBLIES  
SUSCEPTIBLE TO DAMAGE BY  
ELECTROSTATIC DISCHARGE (ESD).



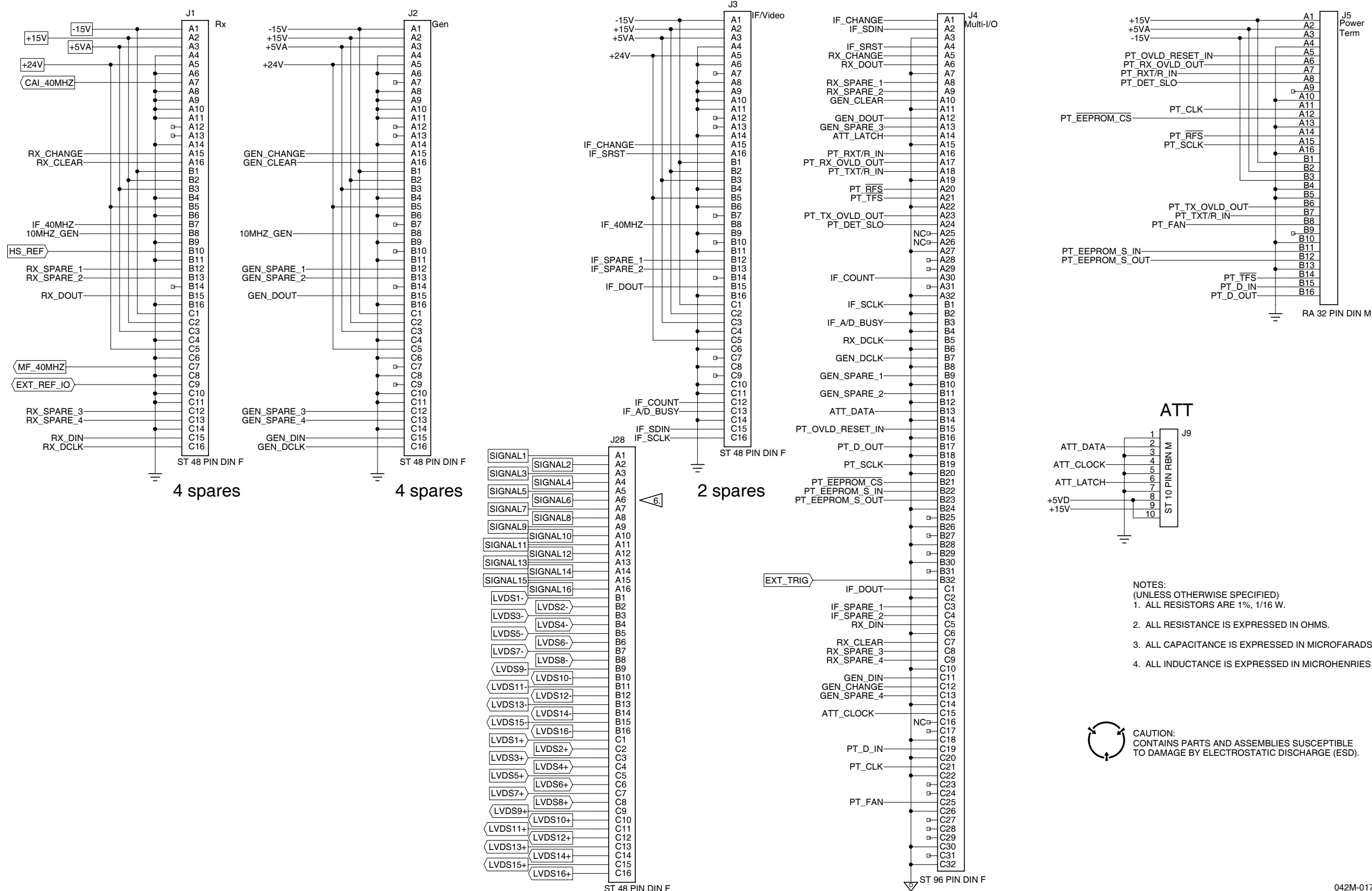
042-005

Figure 5-2 Chassis Assy  
(7005-4243-900-G) (42A1A1)



042M-030

Figure 5-3 Backplane PCB Assy  
(7010-4236-100-B) (42A1A1A1)



- NOTES:  
(UNLESS OTHERWISE SPECIFIED)
1. ALL RESISTORS ARE 1%, 1/16 W.
  2. ALL RESISTANCE IS EXPRESSED IN OHMS.
  3. ALL CAPACITANCE IS EXPRESSED IN MICROFARADS.
  4. ALL INDUCTANCE IS EXPRESSED IN MICROHENRIES.

CAUTION:  
CONTAINS PARTS AND ASSEMBLIES SUSCEPTIBLE  
TO DAMAGE BY ELECTROSTATIC DISCHARGE (ESD).

Figure 5-3 Backplane PCB Assy (cont)  
(0000-4236-100-A) (42A1A1A1)

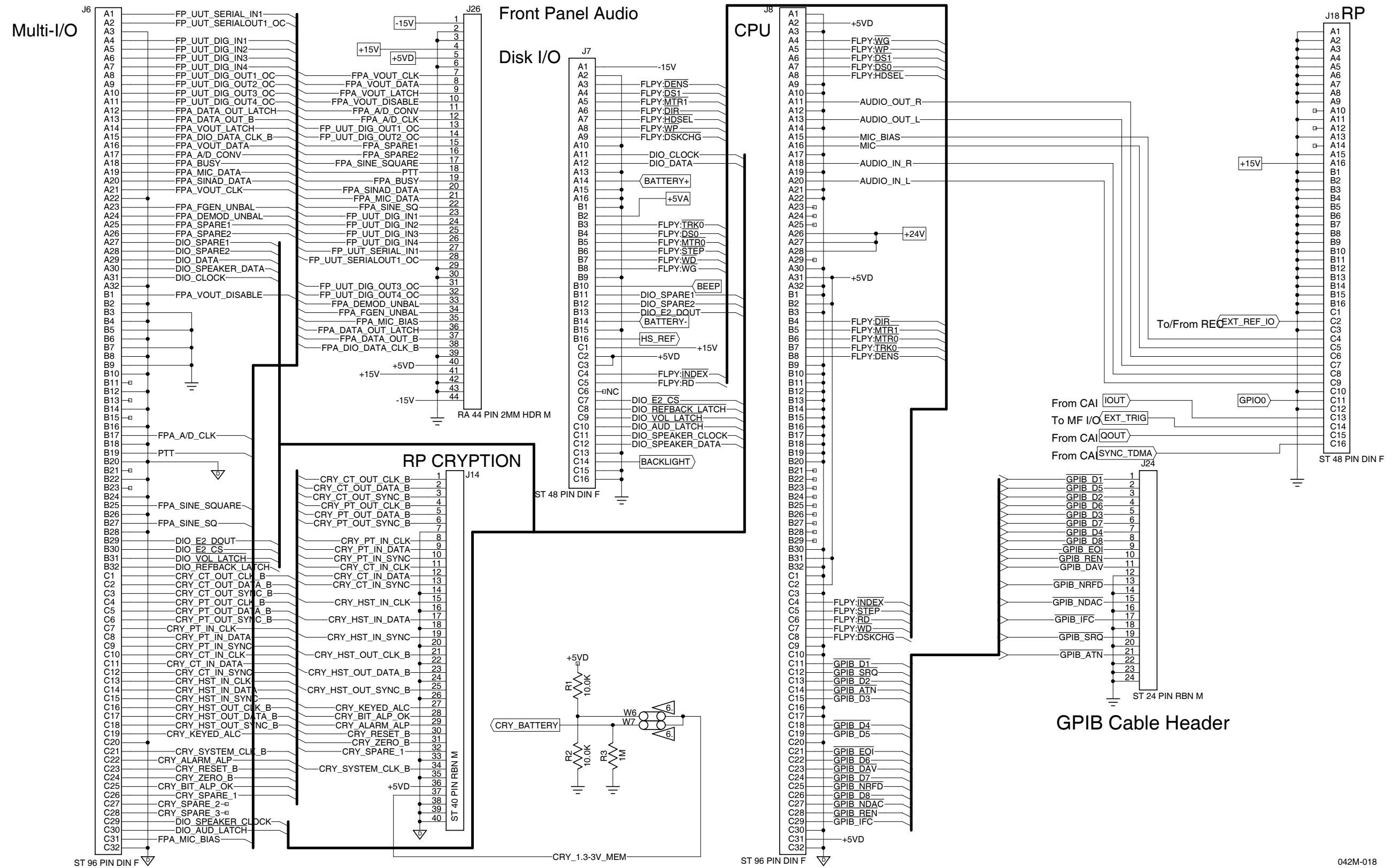


Figure 5-3 Backplane PCB Assy (cont)  
(0000-4236-100-A) (42A1A1A1)

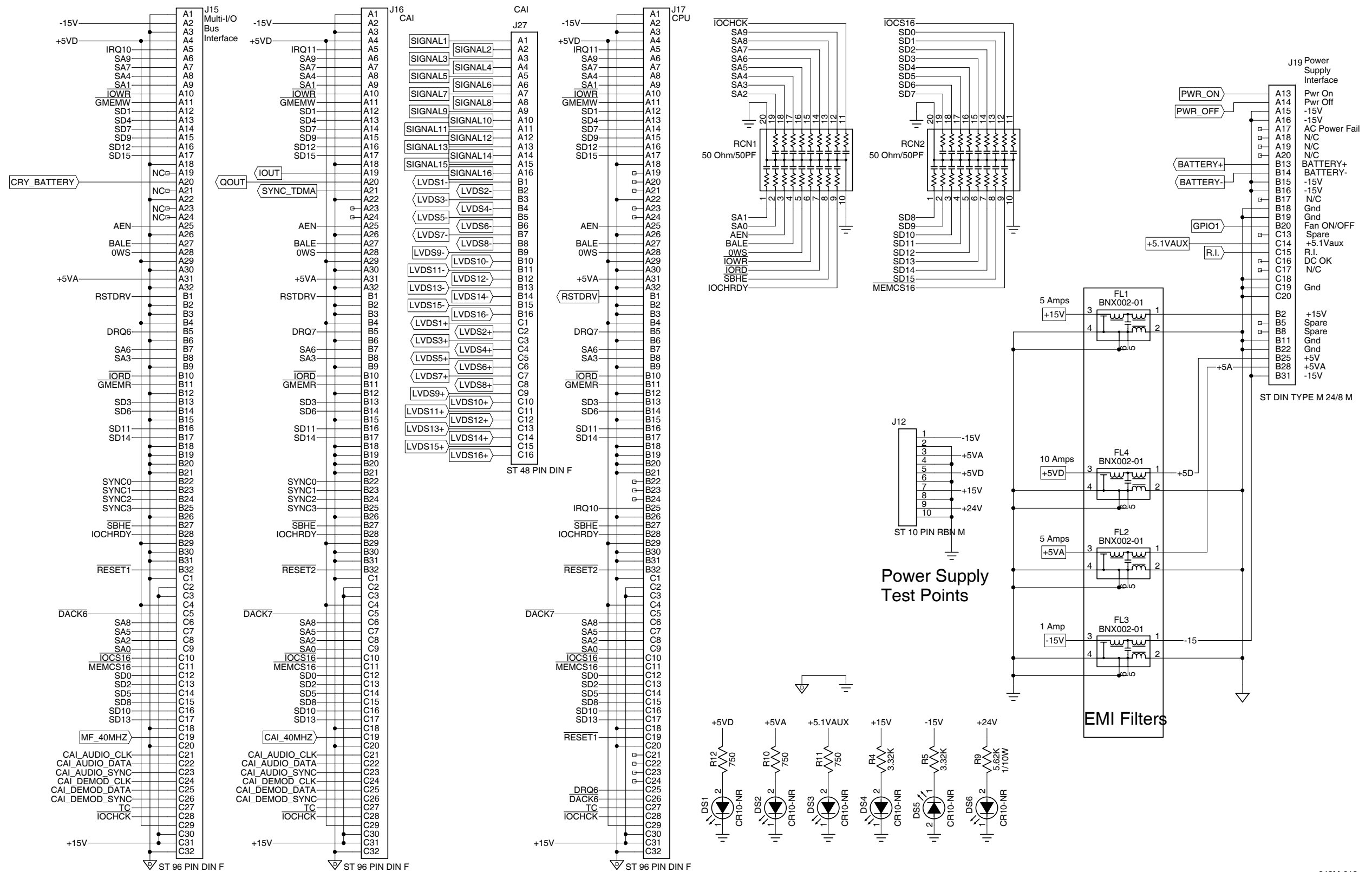


Figure 5-3 Backplane PCB Assy (cont)  
(0000-4236-100-A) (42A1A1A1)



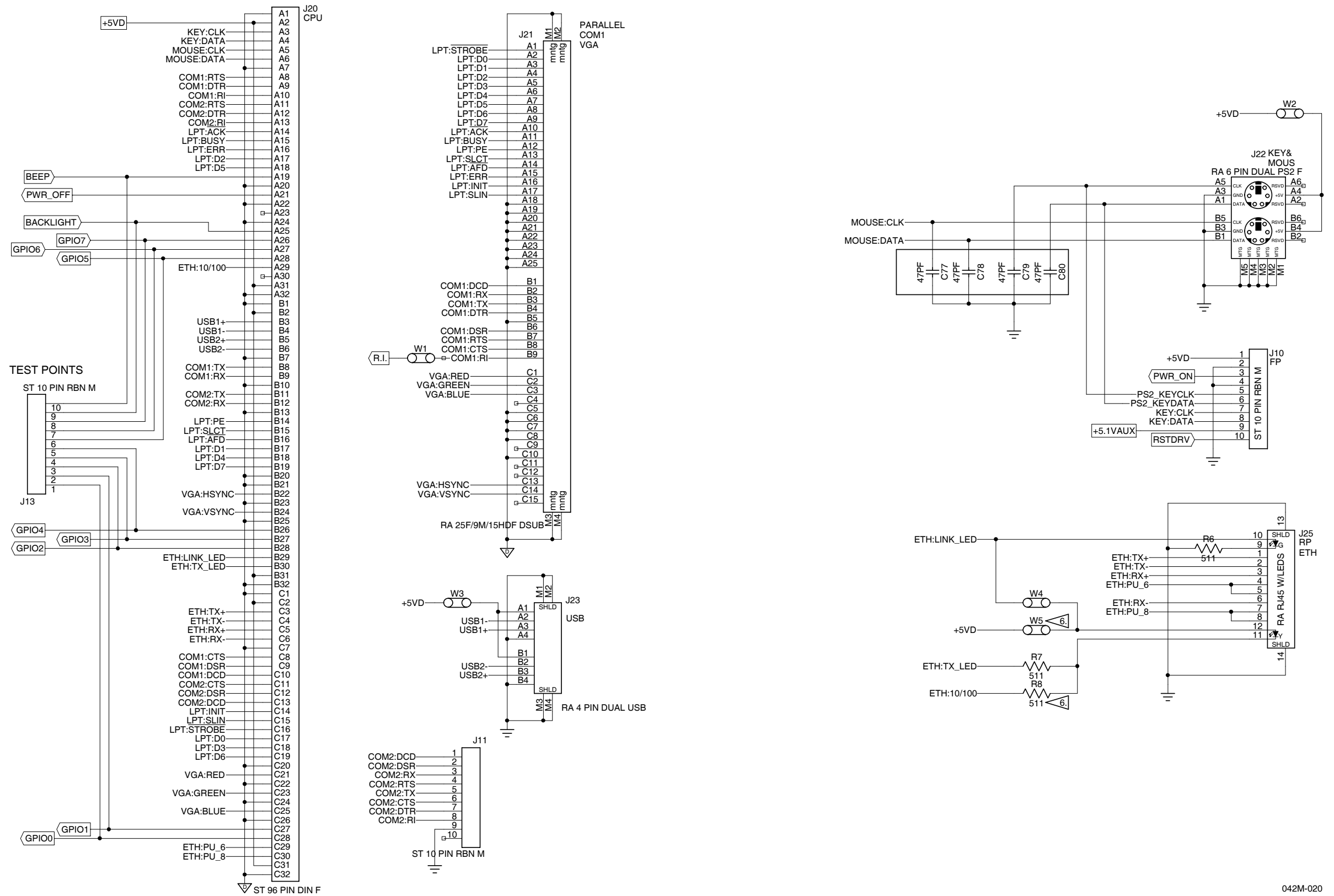
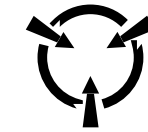
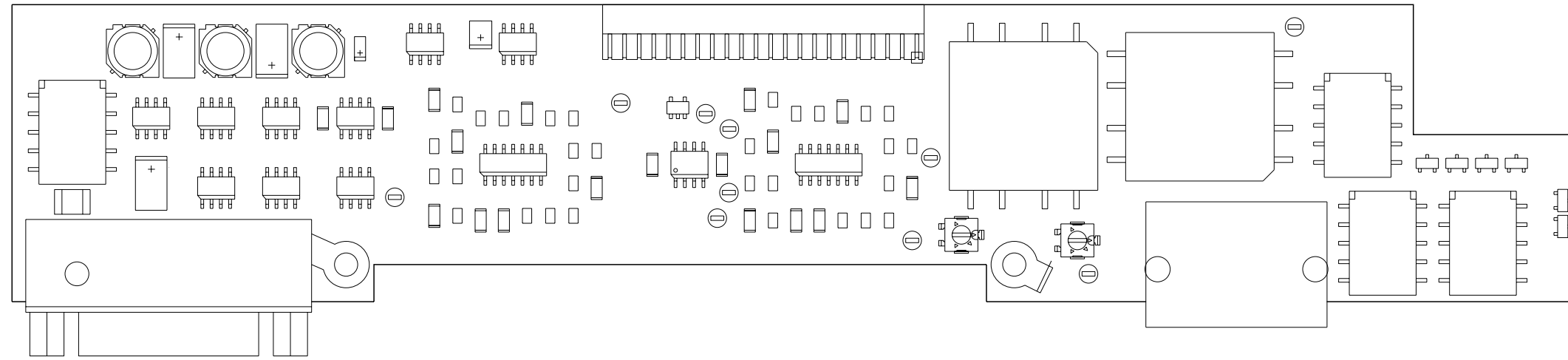
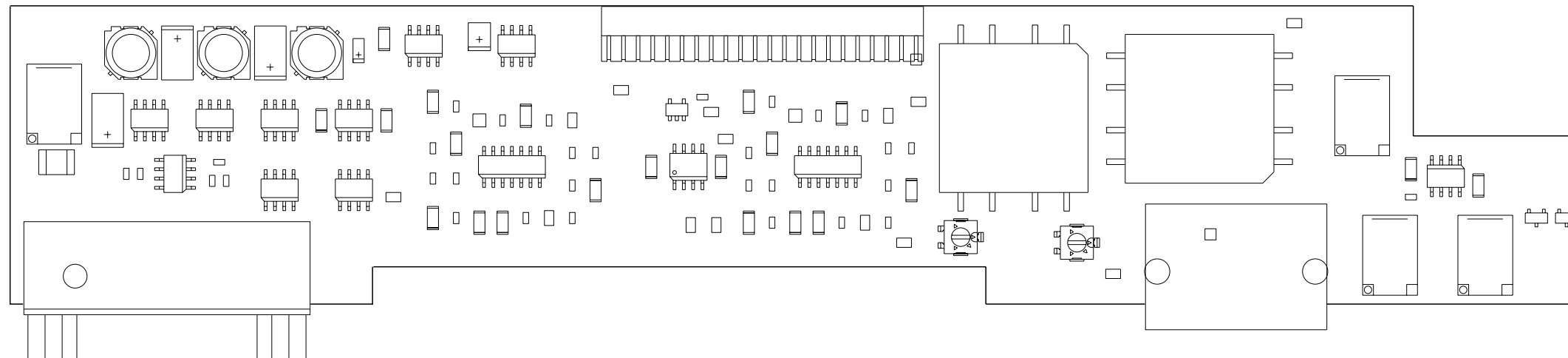


Figure 5-3 Backplane PCB Assy (cont)  
(0000-4236-100-A) (42A1A1A1)

 **CAUTION:**  
CONTAINS PARTS AND ASSEMBLIES  
SUSCEPTIBLE TO DAMAGE BY  
ELECTROSTATIC DISCHARGE (ESD).



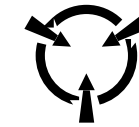
(7010-4234-000)

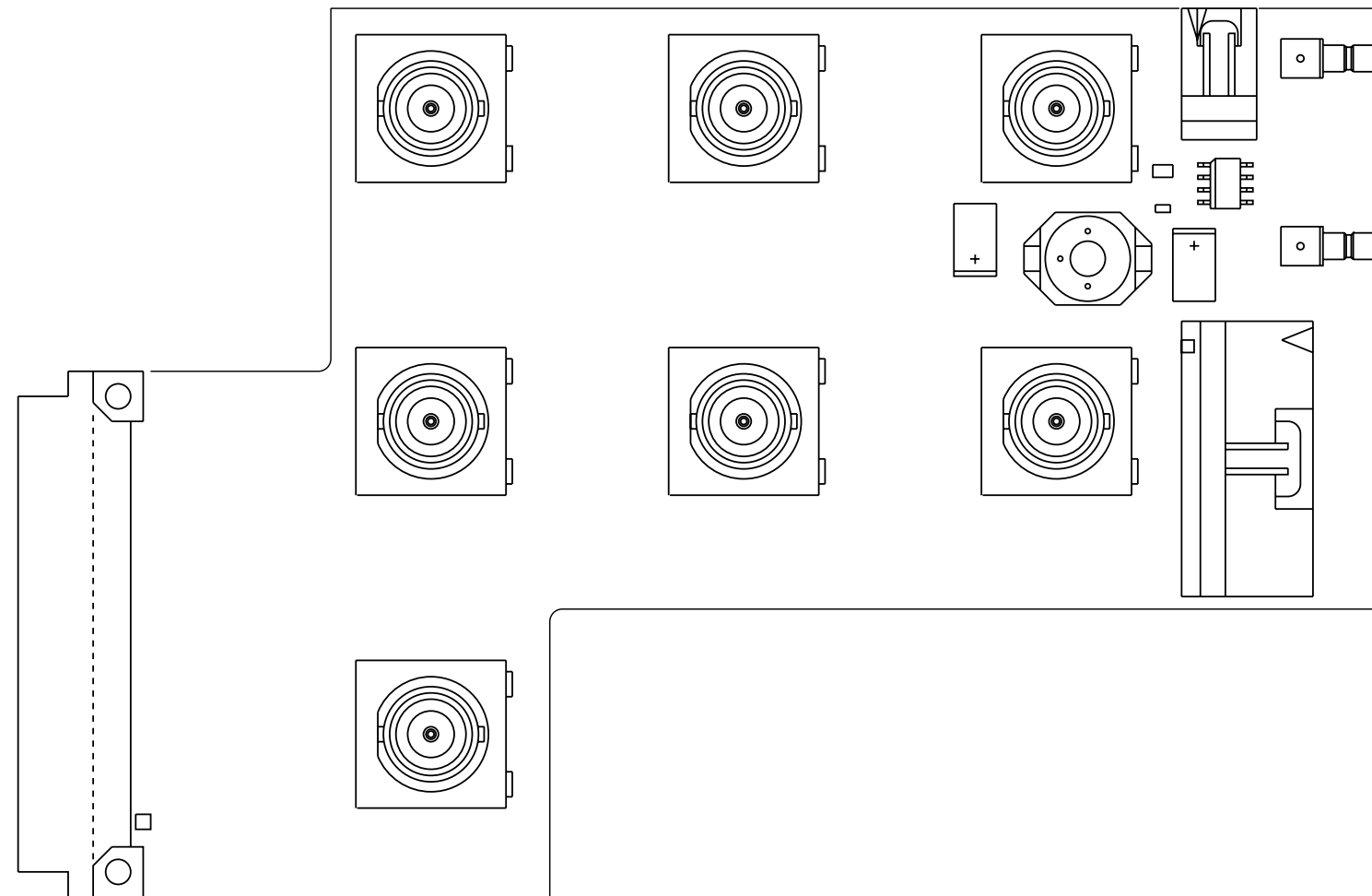


(7010-4238-700)

042M-010


Figure 5-4 Front Panel Audio PCB Assy  
(7010-4234-000-H) (7010-4238-700-A) (42A1A1A2)

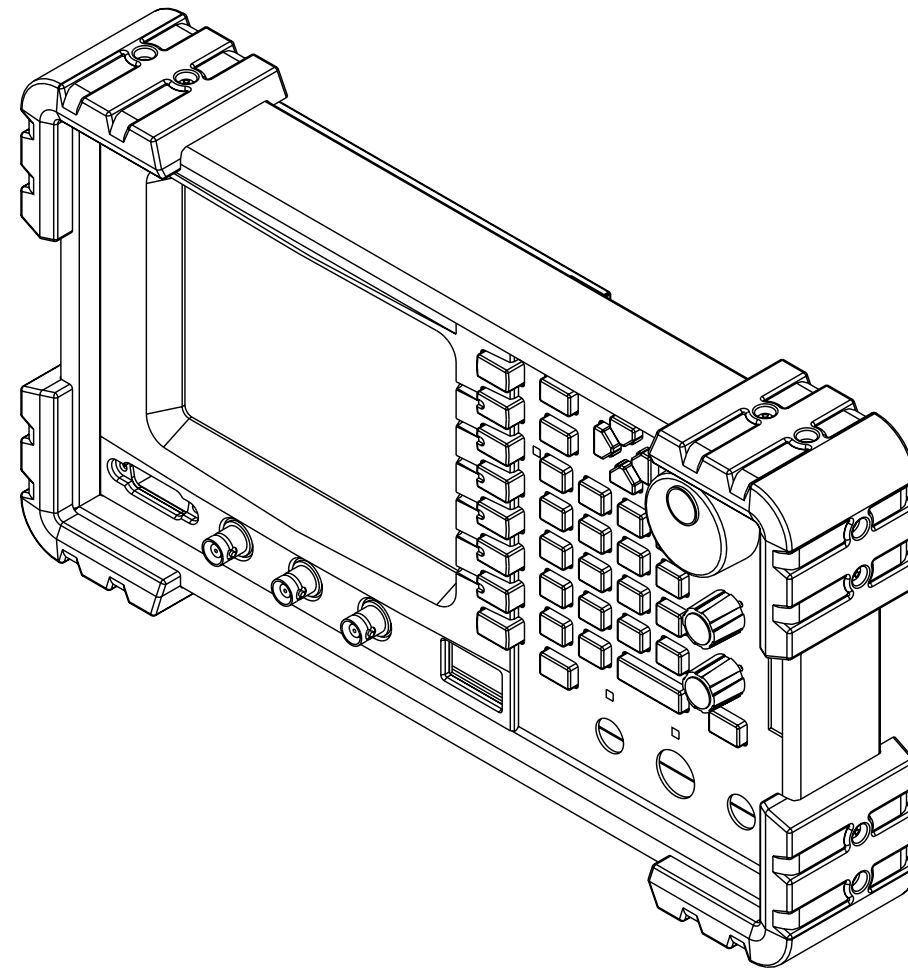
 **CAUTION:**  
CONTAINS PARTS AND ASSEMBLIES  
SUSCEPTIBLE TO DAMAGE BY  
ELECTROSTATIC DISCHARGE (ESD).



042M-011

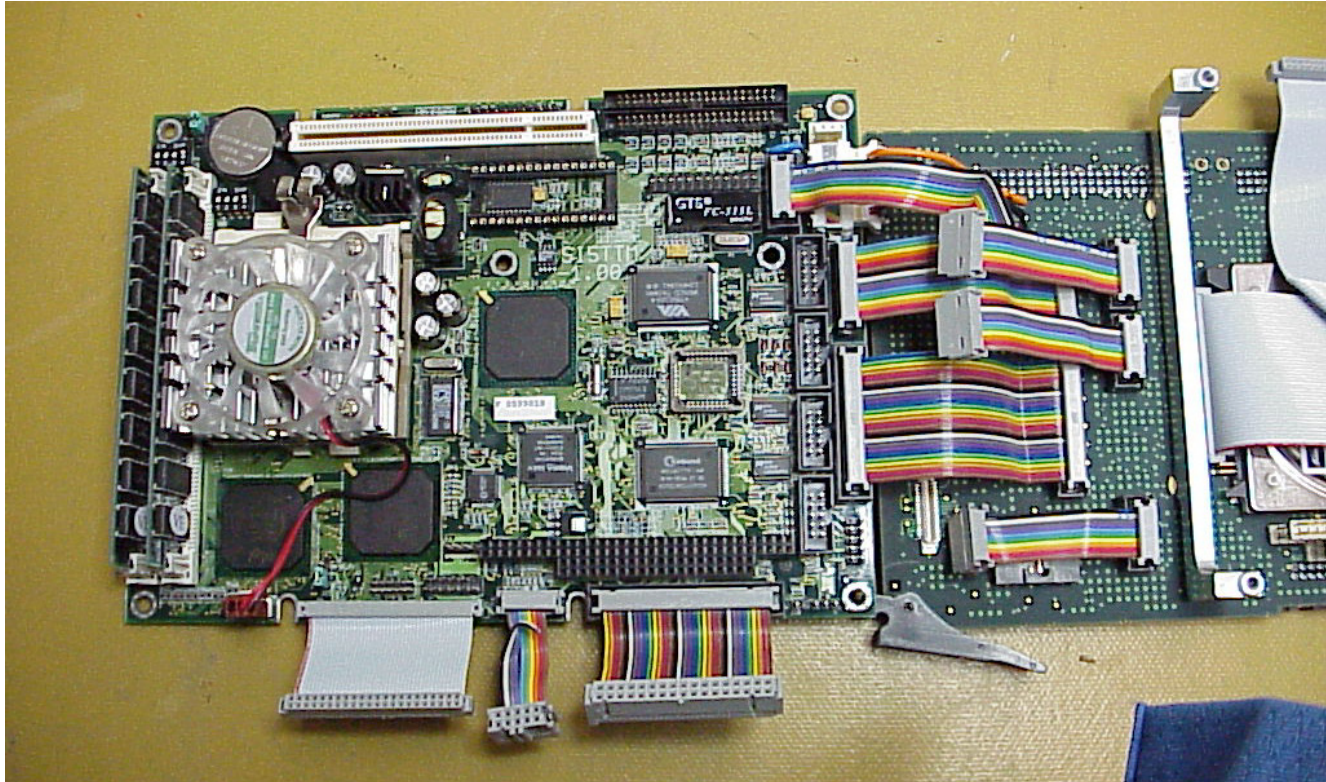
Figure 5-5 Rear Panel PCB Assy  
(7010-4233-800-B) (42A1A1A3)

 **CAUTION:**  
CONTAINS PARTS AND ASSEMBLIES  
SUSCEPTIBLE TO DAMAGE BY  
ELECTROSTATIC DISCHARGE (ESD).

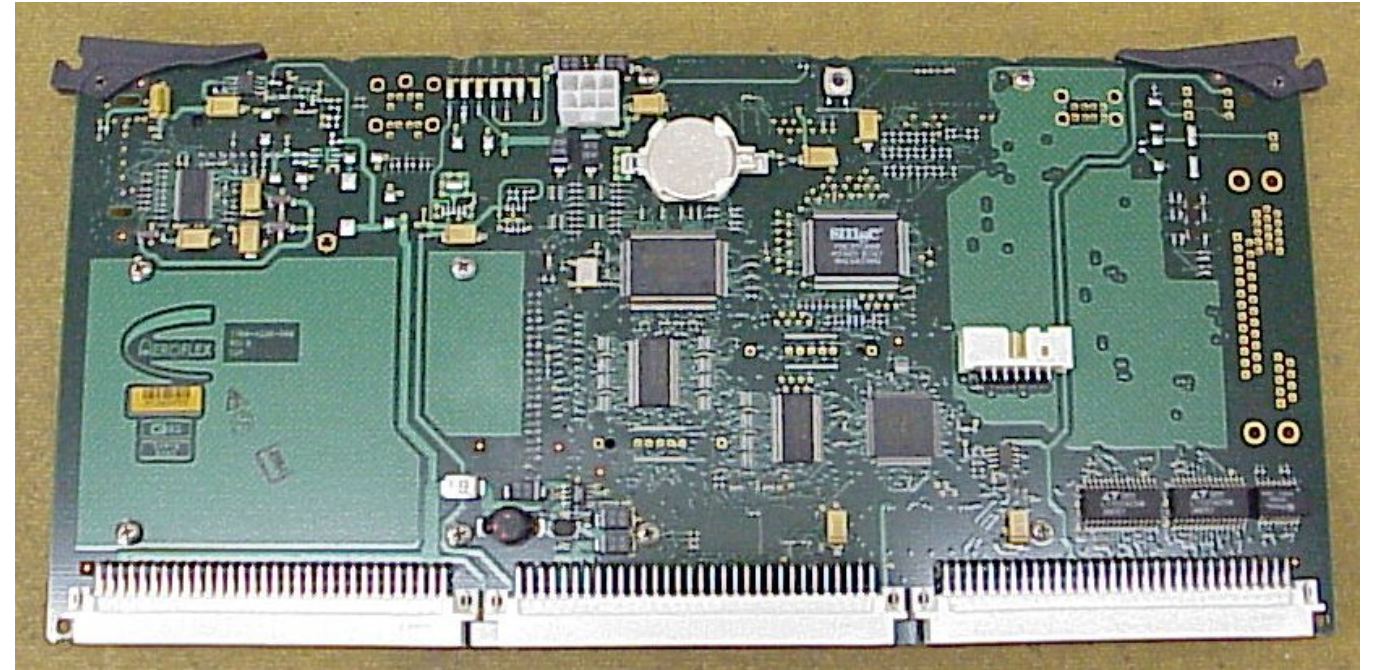


042M-013

Figure 5-6 Front Panel Assy  
(7005-4243-700-F) (42A1A1A4)

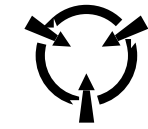


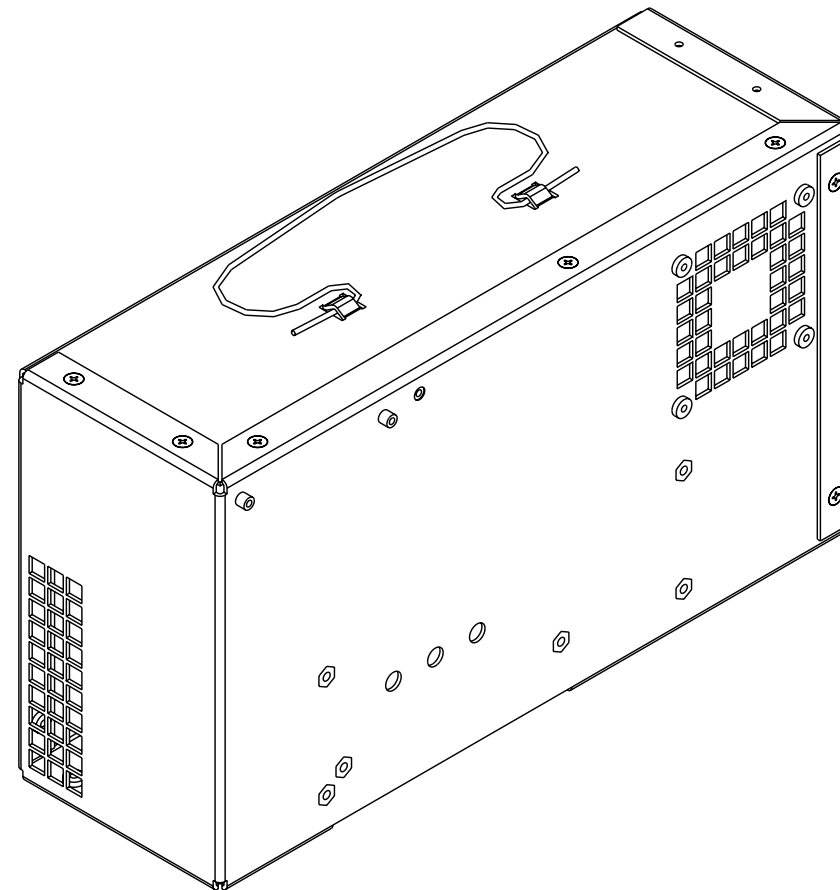
(7005-4243-500)



(7010-4238-800)

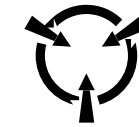
Figure 5-7 CPU Adapter Assy  
(7005-4243-500-F) (7010-4238-800-C) (42A1A1A5)

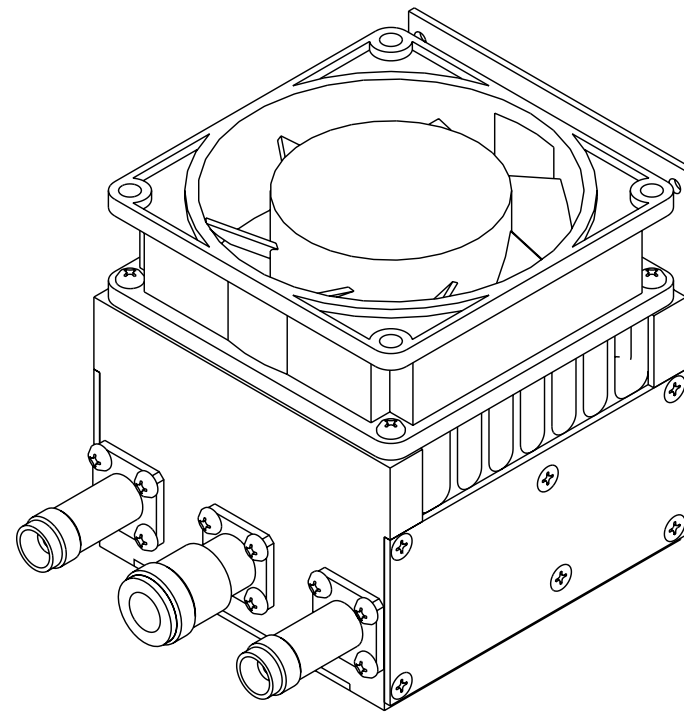
 **CAUTION:**  
CONTAINS PARTS AND ASSEMBLIES  
SUSCEPTIBLE TO DAMAGE BY  
ELECTROSTATIC DISCHARGE (ESD).



042M-013

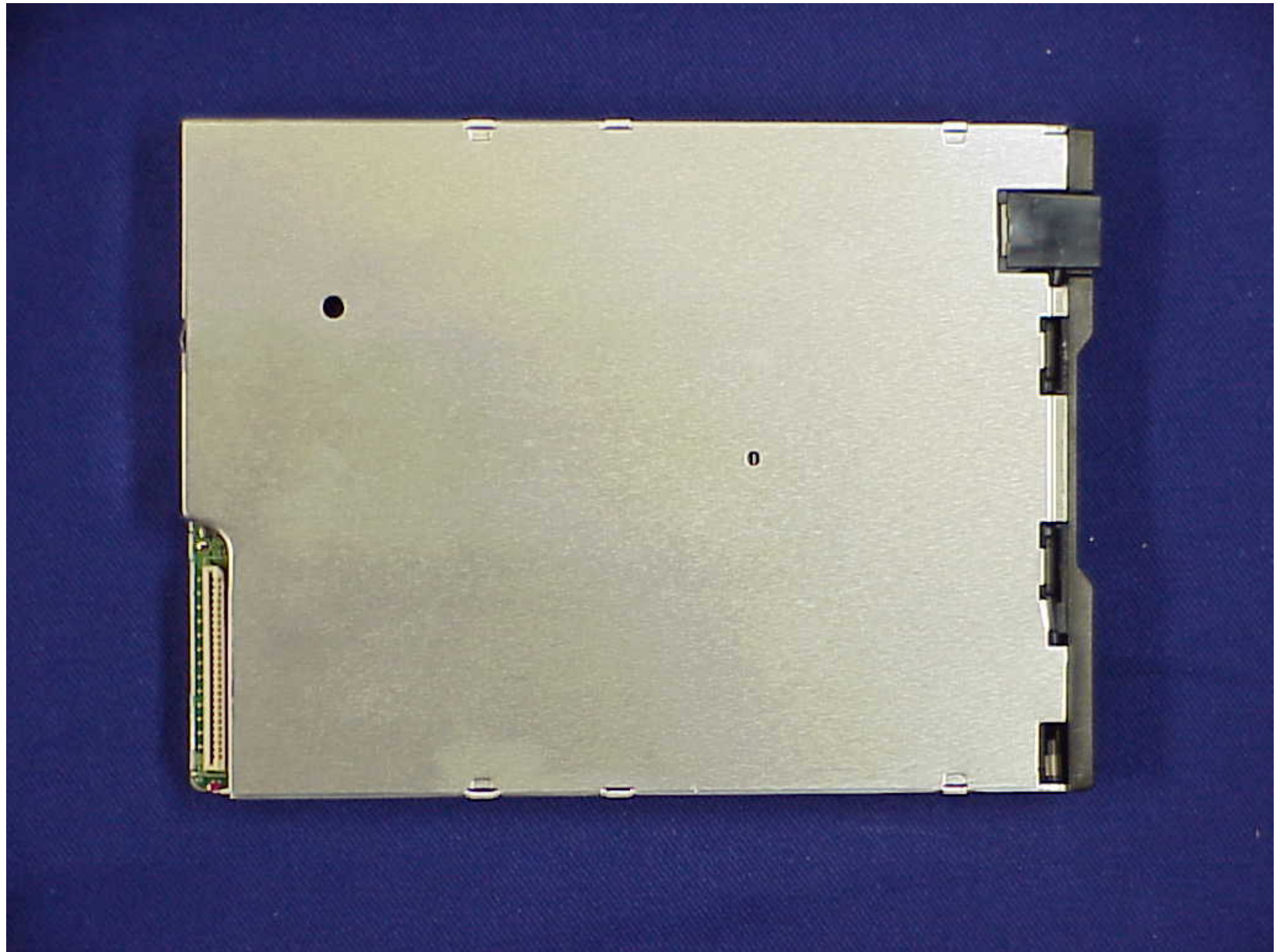
Figure 5-8 Power Supply Assy  
(7005-4243-400-D) (42A1A1A6)

 **CAUTION:**  
CONTAINS PARTS AND ASSEMBLIES  
SUSCEPTIBLE TO DAMAGE BY  
ELECTROSTATIC DISCHARGE (ESD).



042M-013

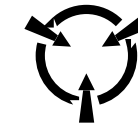
Figure 5-9 Power Termination Assy  
(7005-4242-500-K) (42A1A1A7)

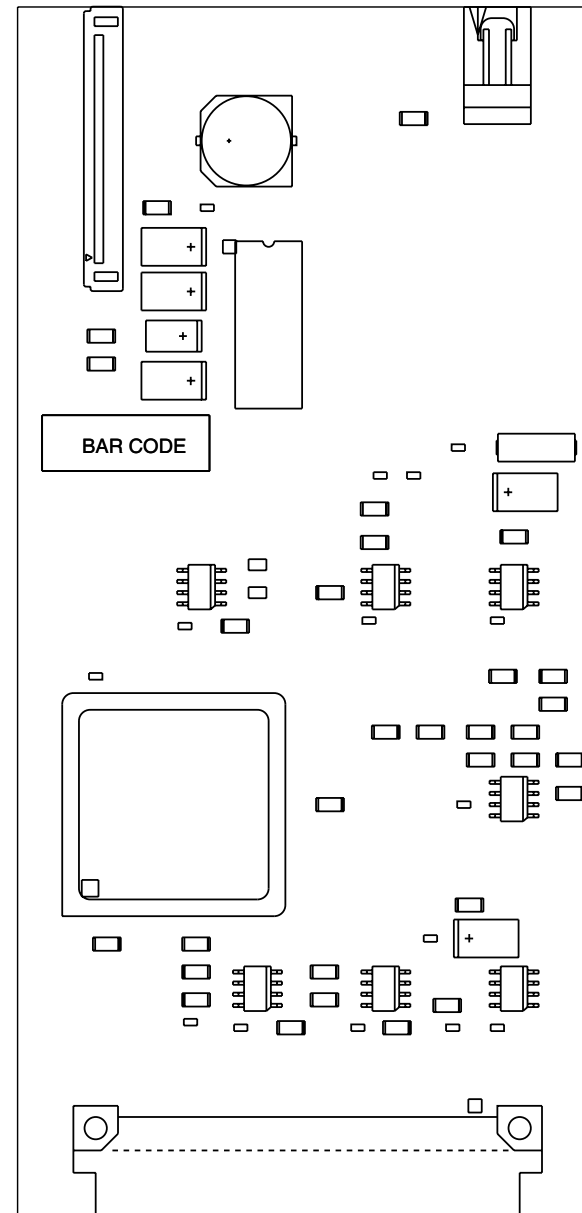


042M-032

Figure 5-10 Floppy Drive Assy  
(7110-4244-400-A) (42A1A1A8)

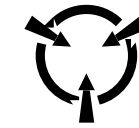


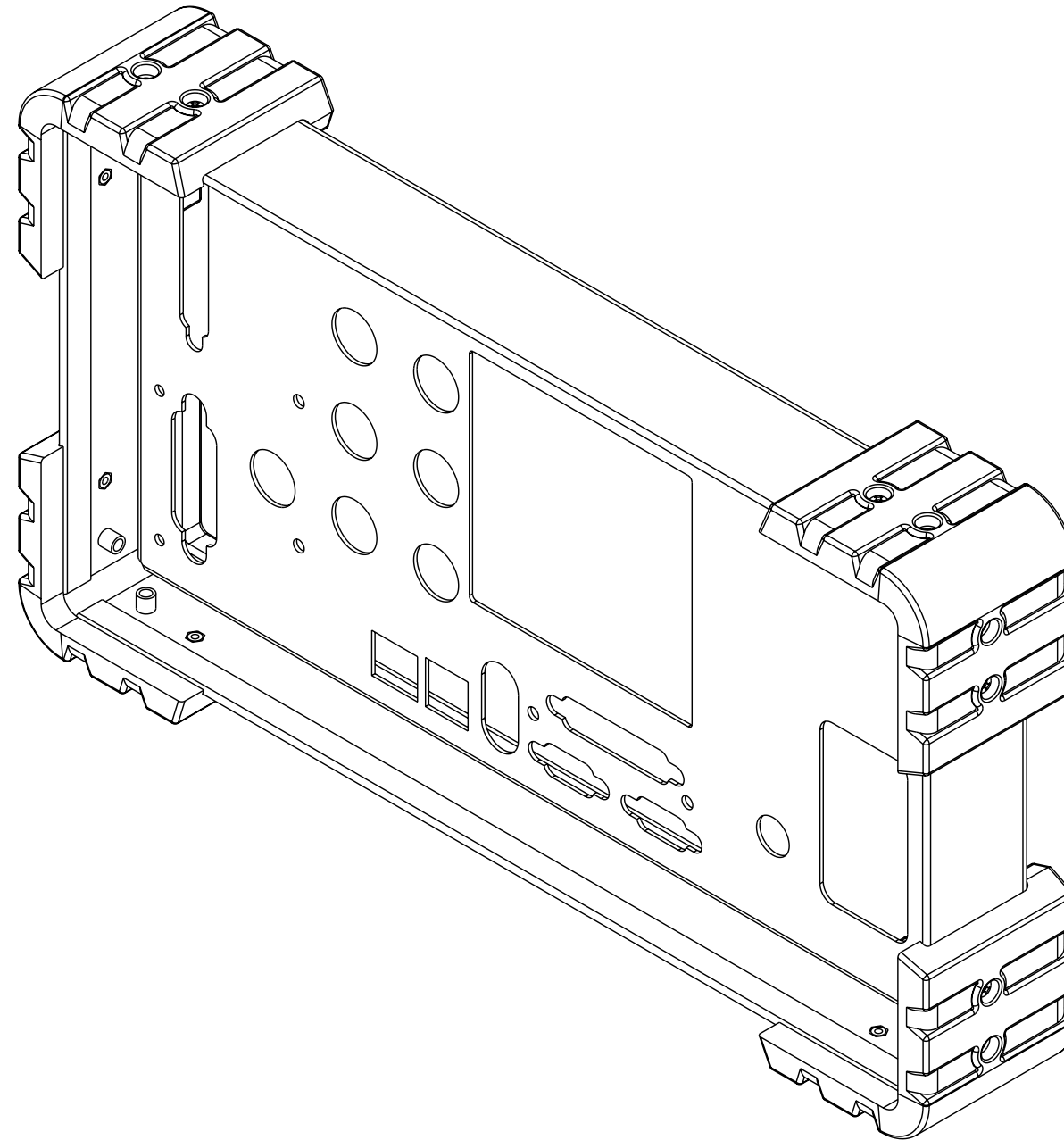
 **CAUTION:**  
CONTAINS PARTS AND ASSEMBLIES  
SUSCEPTIBLE TO DAMAGE BY  
ELECTROSTATIC DISCHARGE (ESD).



042M-012

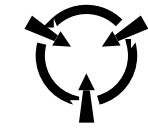
Figure 5-11 Disk I/O PCB Assy  
(7010-4232-800-D) (42A1A1A9)

 **CAUTION:**  
CONTAINS PARTS AND ASSEMBLIES  
SUSCEPTIBLE TO DAMAGE BY  
ELECTROSTATIC DISCHARGE (ESD).

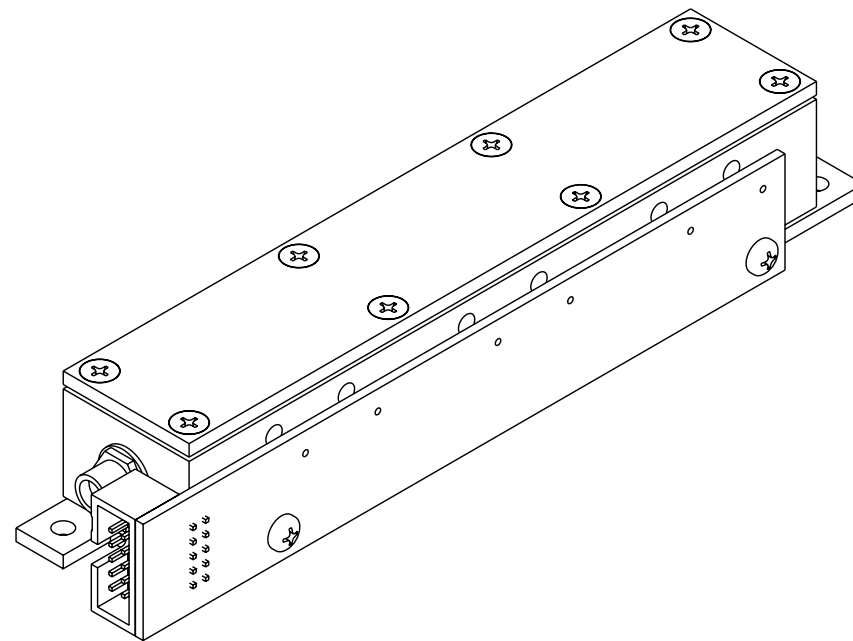


042M-007

Figure 5-12 Rear Panel Assy  
(7005-4243-800-D) (42A1A2)




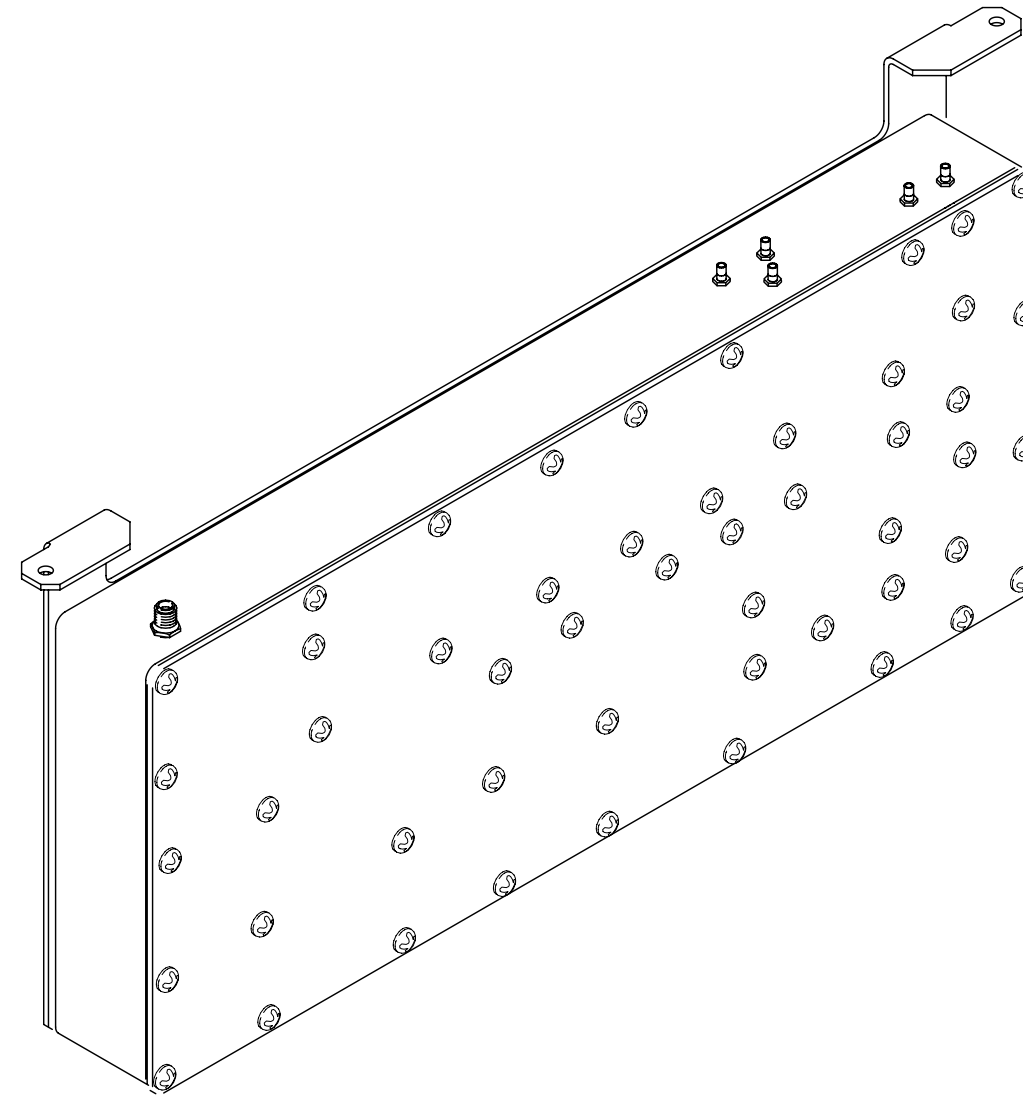
**CAUTION:**  
CONTAINS PARTS AND ASSEMBLIES  
SUSCEPTIBLE TO DAMAGE BY  
ELECTROSTATIC DISCHARGE (ESD).



042M-006

Figure 5-13 Attenuator Assy  
(7005-4243-100-F) (42A1A3)

 **CAUTION:**  
CONTAINS PARTS AND ASSEMBLIES  
SUSCEPTIBLE TO DAMAGE BY  
ELECTROSTATIC DISCHARGE (ESD).

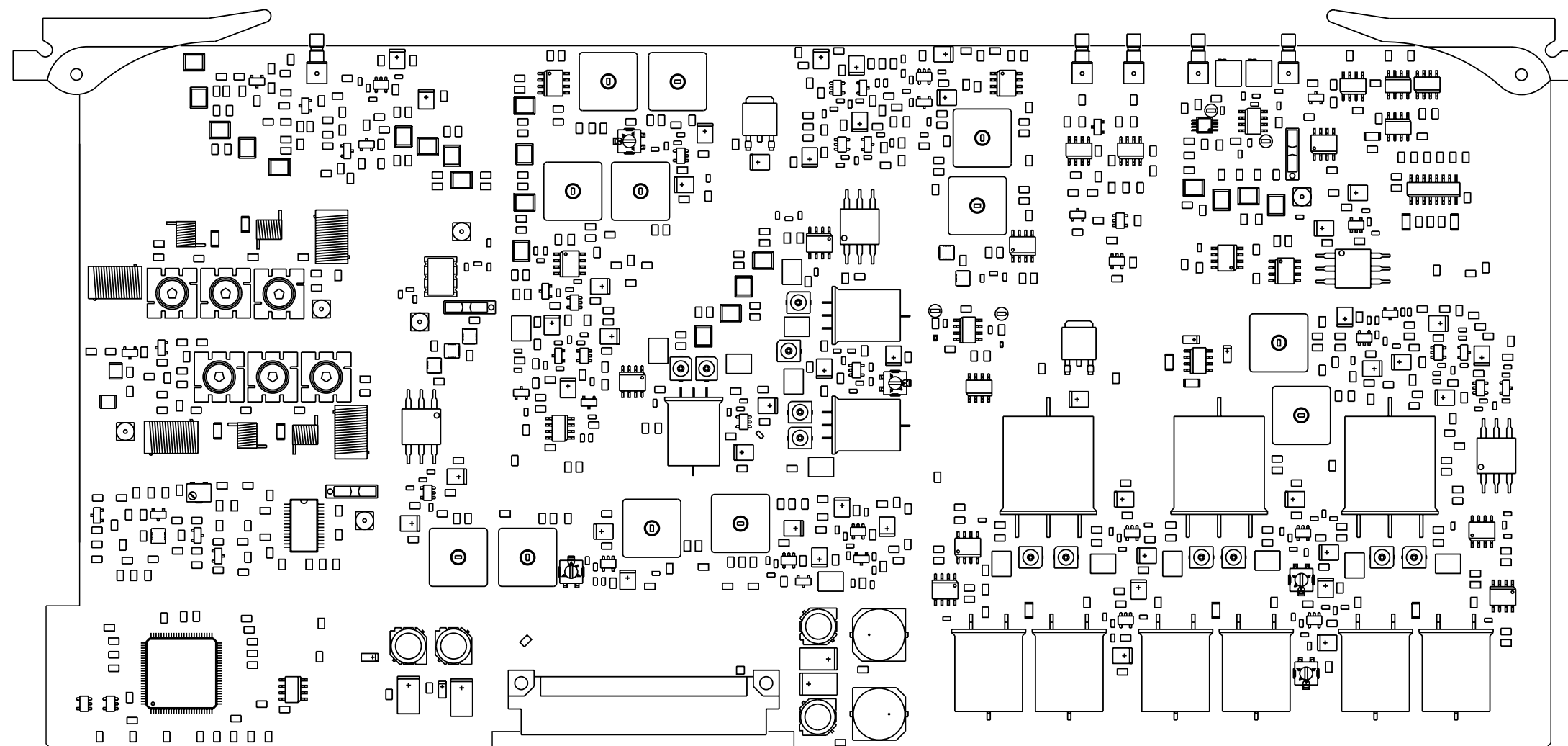


042M-009

Figure 5-14 Generator Assy  
(7005-4242-600-E) (7005-4442-500-A) (7005-4444-200-A) (7005-4249-000-A) (42A1A4)



**CAUTION:**  
CONTAINS PARTS AND ASSEMBLIES  
SUSCEPTIBLE TO DAMAGE BY  
ELECTROSTATIC DISCHARGE (ESD).

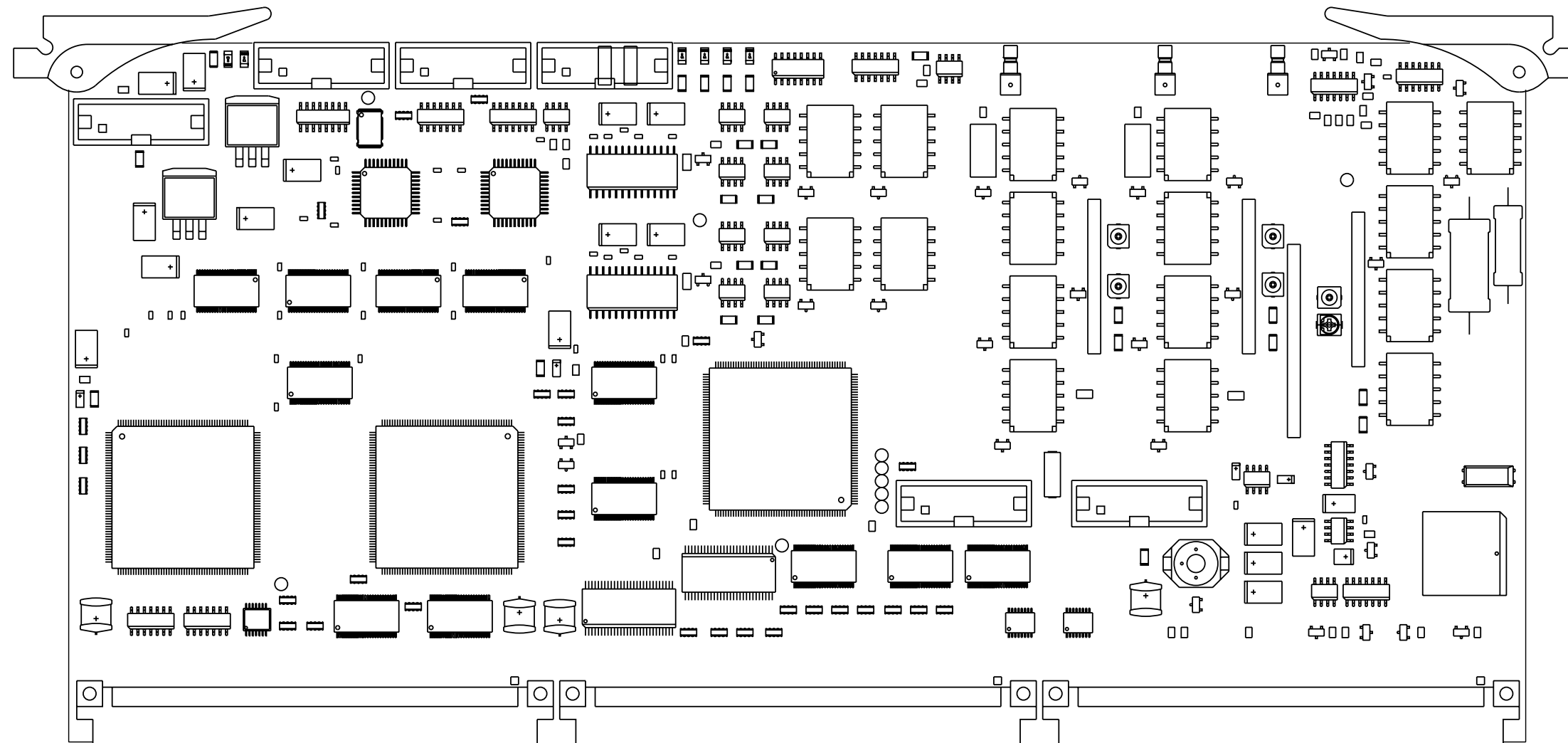


042M-004

Figure 5-15 IF/Video PCB Assy  
(7010-4236-800-D) (42A1A5)

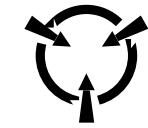


**CAUTION:**  
CONTAINS PARTS AND ASSEMBLIES  
SUSCEPTIBLE TO DAMAGE BY  
ELECTROSTATIC DISCHARGE (ESD).

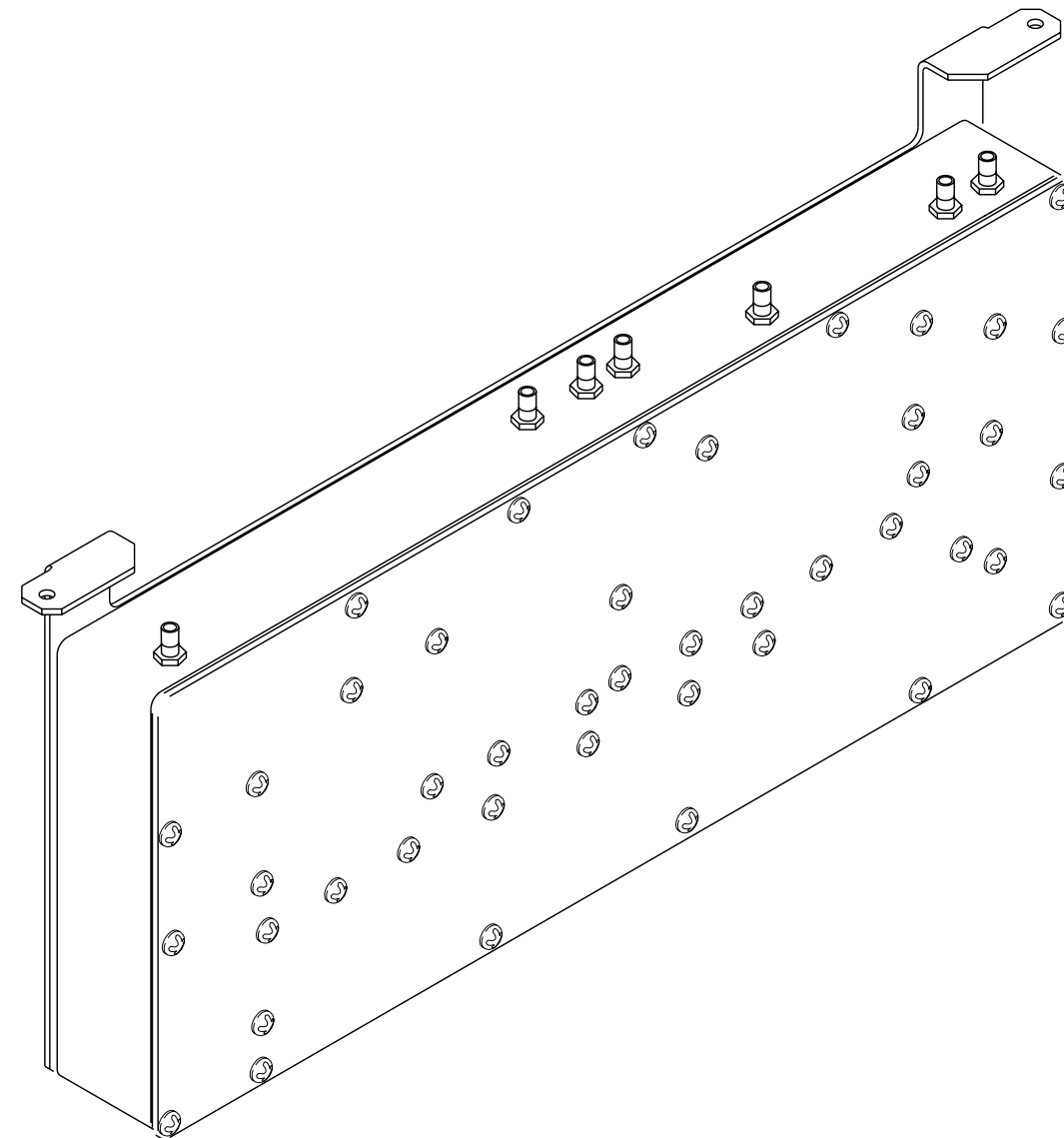


042M-003

Figure 5-16 Multifunction I/O PCB Assy  
(7010-4236-700-D) (42A1A6)

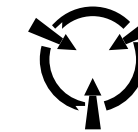


**CAUTION:**  
CONTAINS PARTS AND ASSEMBLIES  
SUSCEPTIBLE TO DAMAGE BY  
ELECTROSTATIC DISCHARGE (ESD).

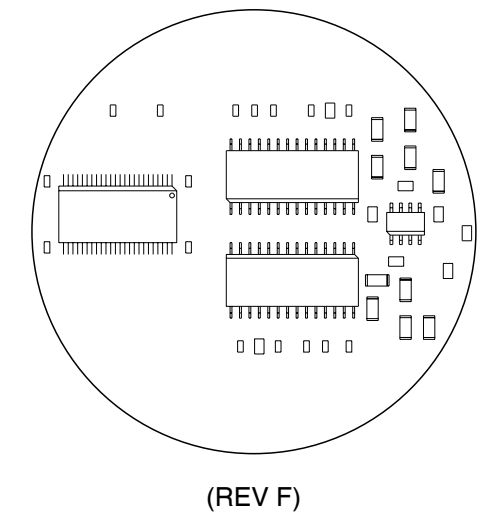
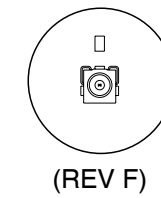
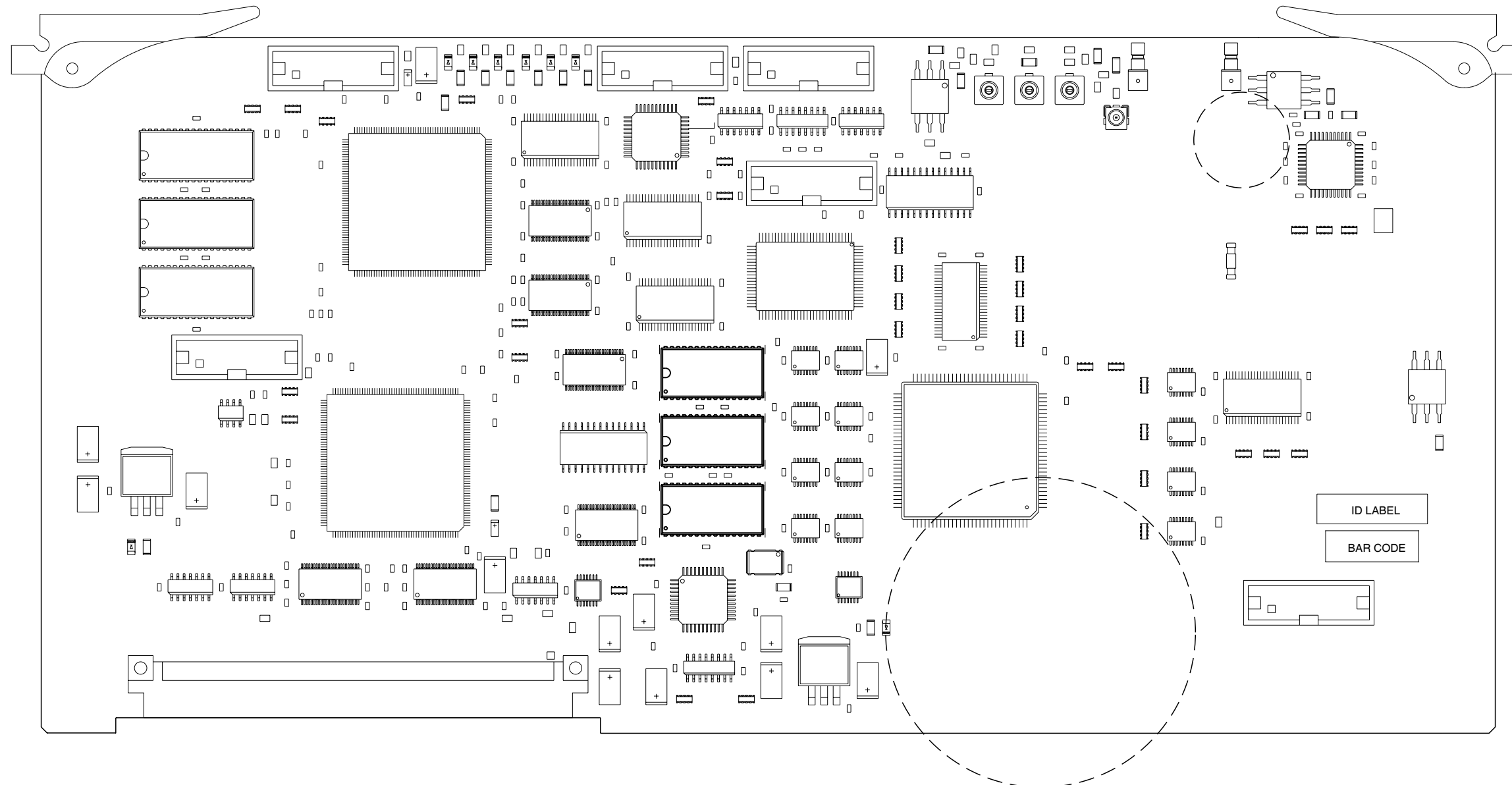


042M-008

Figure 5-17 Receiver Assy  
(7005-4248-100-B) (42A1A7)



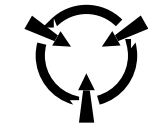
**CAUTION:**  
CONTAINS PARTS AND ASSEMBLIES  
SUSCEPTIBLE TO DAMAGE BY  
ELECTROSTATIC DISCHARGE (ESD).

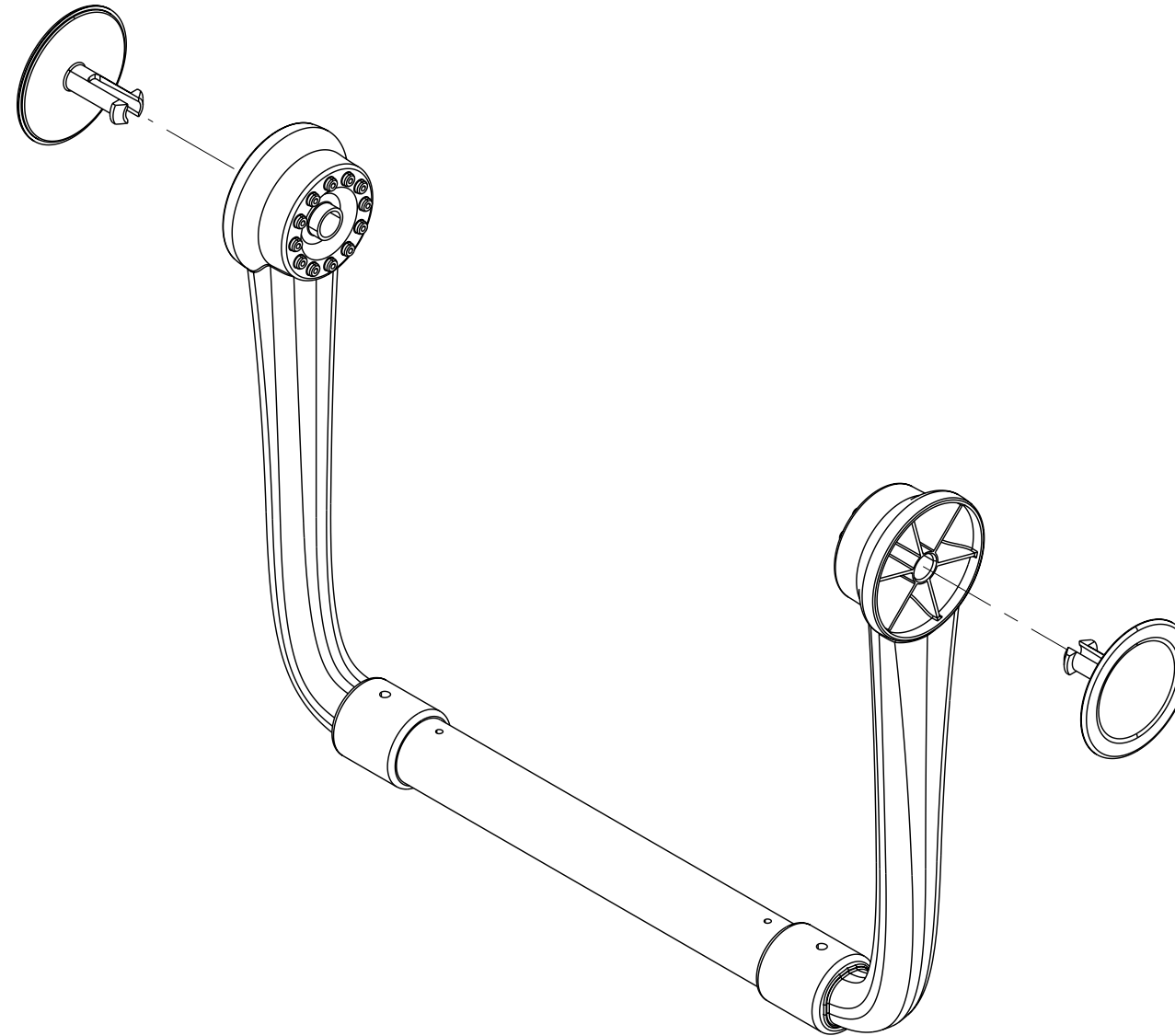


042M-002

Figure 5-18 CAI PCB Assy  
(7010-4232-900-K) (42A1A8)



 **CAUTION:**  
CONTAINS PARTS AND ASSEMBLIES  
SUSCEPTIBLE TO DAMAGE BY  
ELECTROSTATIC DISCHARGE (ESD).



042M-001

Figure 5-19 Handle Assy  
(7110-4246-800-C) (42A1A9)

THIS PAGE INTENTIONALLY LEFT BLANK.