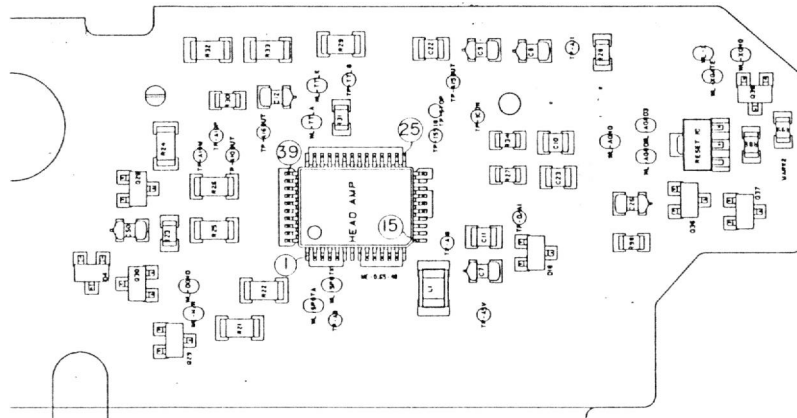


c 4-f I C T E R M I N A L S

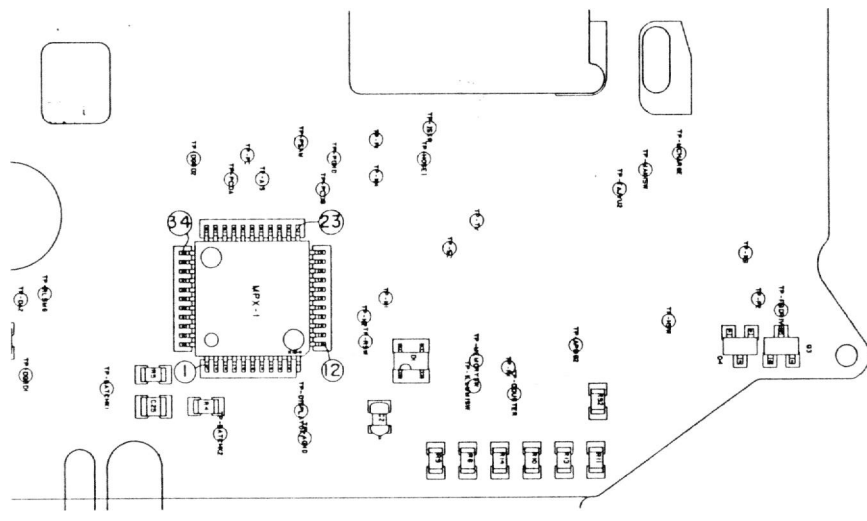
FAA23051-1R-2,24R, .XA

U 1
M51063GP
(Head Amp)



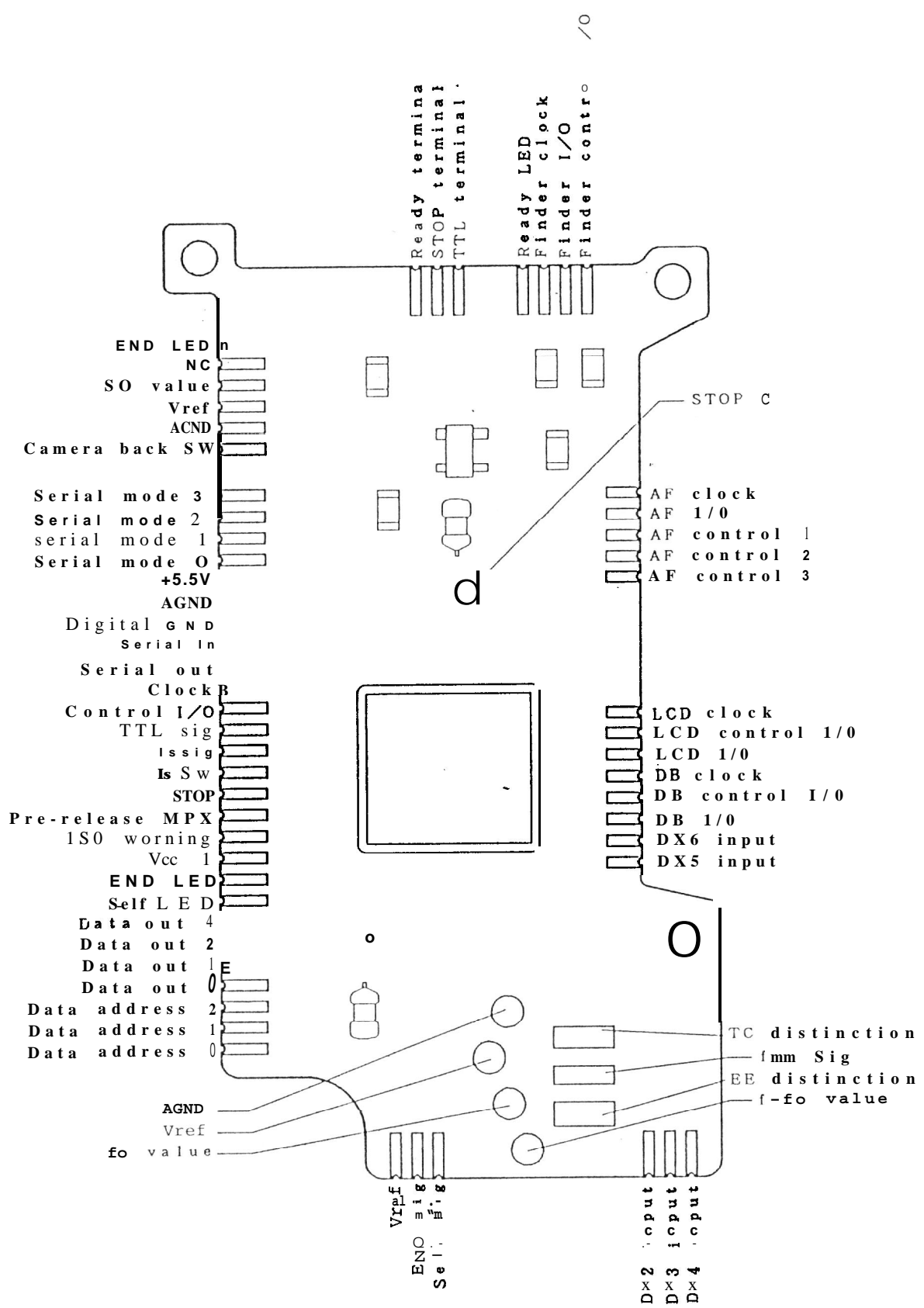
Pin	Terminal	Pin	Terminal
1	N. C	36	A12 output 2
2	Ref VOI A7 output	37	A16 outPut
3	N. C	38	N. C
4	N. C	39	A16 input
5	Spot SPD input	40	Vref (All output)
6	N. C	41	All input
7	N. C	42	A10 (+) input 2
8	N. C	43	N. C
9	A3 off-set adj. 1	44	GND
10	A30ff-set adj. 2	45	A10 (+) input 1
11	V c c	46	A10 output
12	Reset output	47	A10 (-) input
13	Reset delay C	48	A9 output
14	K c		
15	N. C		
16	N. C		
17	N. C		
18	N. C		
19	GND		
20	Discharging (DA1)		
21	Charging (DA2)		
22	N. C		
23	ii-c		
24	Flash terminal		
25	N. C		
26	integration start signal		
27	N. C		
28	Nash stopsig 1		
29	Flash integration condenser		
30	A15 output		
31	A15 (-) input		
32	A15 (+) input		
33	N. C		
34	Sync SPfl K		
35	Sync SPD A		

U 2
151068FP
 (MPX--1)

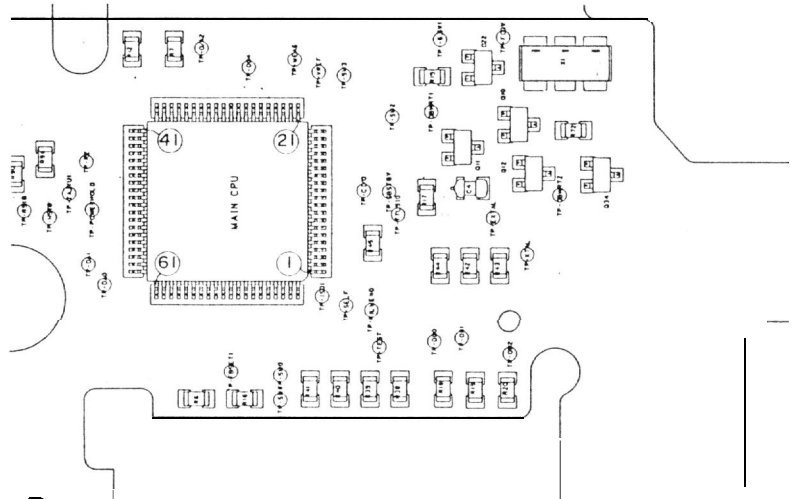


Pin	Name	Pin	Naac
1	Power GND	36	Motor mode 2
2	Battery Check	37	Motor mode 3
3	DC-DC converter control	38	NC
4	Power hold	39	Digital GND
5	AF pre-release sig	40	+3.3V output
6	Pre-release sig	41	+3.3V limiter
7	Release sig	42	+3.3V base
8	Pre-release SW	43	+5.5V
9	Pre-release MPX	44	Vcc 1
10	Pre-release/release sig		
11	NC		
12	Release SW		
13	NC		
14			
15	Rewind motor drive 1		
16	Rewind motor drive 2		
17	Analog GND		
18	Spool motor brake		
19	Charge motor brake		
20	Spool motor drive		
21	Charge motor drive		
22	Power GND		
23	NC		
24	Vbat		
25	NC		
26	NC		
27	Aperture PINT output		
28	Mech pulse output		
29	Aperture PINT input		
30	Mech pulse PINT input		
31	NC		
32	NC		
33	Chip enable		
34	Motor mode 0		
35	Motor mode 1		

U 3
 c51062
 <MI'X -2>



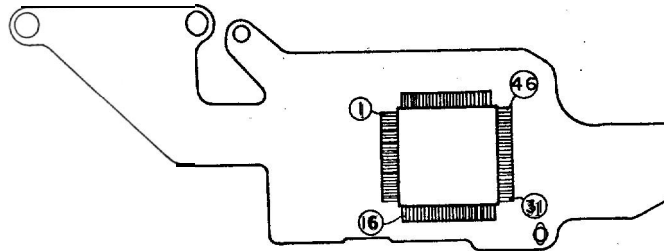
U 4
HD637B05Z
(MAIN CPU)



Note) * is output signal

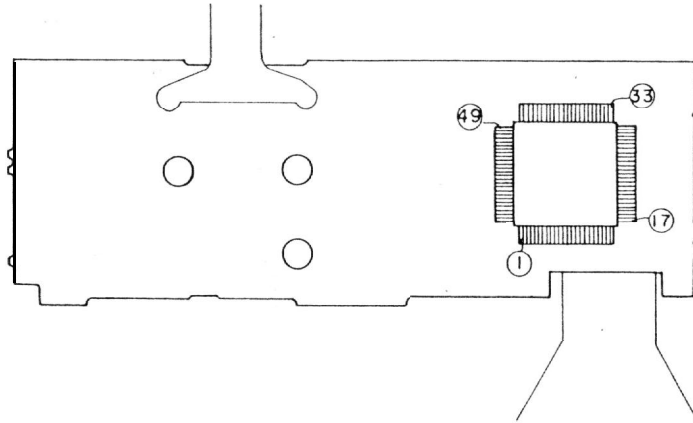
Pin	NAME	Fuuction	Pin	NAME	Fuuction
1	RESET	Reset IN	41	PH '1	Release Accept
2	XTAL	XTAL	72	PJ 4	A F Accept
3	EXTAL	clock IN	43	PJ 3	Film detection SW
4	MPI	Vcc	44	PJ 2	Mech Change Completion SW
5	MPO	GND	45	PJ 11	Film Adv. Completion SW
6	NMI	Vcc	46	PJ 0	A. E. Lock SW
7	STBY	VCC	47	PF 7	Illuminator SW
8	Vcc	Vcc	48	PF 66	Revind SW (R22 SW)
9	Pc 7	TTL Signal (L Out Only)	49	PF 5	Sprocket SW (R1 SW)
10	PC 6	Ready tfor	50	PF 4	Film Counter SW
11	PC 5	Photo Interrupter Input	51	PF 3	
12	Pc 4	For inspection	52	PF 2	Power Hold Signal
13	PC 3	Control I/O	53	PF 1	H Release SW Signal
14	PC 2	Serial Clock (SCLK)	54	PF 0	Pre-release SW sig
15	Pc 1	Serial In (Rx)	55	MP2	GND
16	Pc 0	Serial Out (Tx)	56	VSS	GND
17	*PA 0	Display erasure sig	57	I*PE 7	Data Address 2
18	*PA 1	tech pulse input (INT 1)	58	*PE 6	Data Address 1
19	*PA 2	imprint sig (INT 2)	59	*PE 5	Data Address 0
20	*PA 3	Serial mode 0	60	*PE 4	Release Magnet
21	*PA 4	Serial Mode 1	61	*PE 3	Aperture Magnet
22	*PA 5	Serial Mode 2	62	*PE 2	Closing Shutter Curtain Magnet
23	*PA 6	Serial mode 3	63	*PE 1	Opening Shutter Curtain Magnet
24	AVcc	Vref	64	*PE 0	1250-EXP Camera back adv. sig
25	PD 0	Metering output	65	PG 0	250-EXP Camera back Attach sig
26	PD 1	D/A Monitor	66	PG 1	N. C.
27	PD 2	Battery Check	67	PG 2	N. C.
28	PD 3	Compensation Dial	68	PG 3	Photo interrupter Control
29	PH 4	TV dial	69	PG 4	Motor Mode 0 (L out only)
30	PD 5	S-C dial	70	PG 5	Motor Mode 1 (L out only)
31	P_D 6	AE MODE (P SAM)	71	PG 6	Motor mode 2 (L out only)
32	PD 7	ISO, f, f-f	72	PG 7	Motor mode 3 (L out only)
33	AVSS	Analog Gnd	73	PB 0	X Accept (L out only)
34	P11 0	D/A 1 (L Out Only)	74	PB 1	CE (EE-PROM)
35	PH 1	D/A 2 (L Out Only)	75	PB 2	Data Out 0
36	P11 2	CTL 3 (L Out Only)	76	PB 3	Data Out 1
37	P11 3	L. A. E. (L Out Only)	77	PB 4	Data Out 2
38	P11 4	D. C. (L Out Only)	78	PB 5	END Display (L Out Only)
39	P11 5	Lens Drive Signal	79	PB 6	Self Display (L Out Only)
40	P11 6	Filter Signal	80	P B 7	ISO Warning (L Out Only)

U 5
150922
 <LCD Driver)



Pin	Name	Pin	Name
1	Back light LED	36	SEG 4
2	Redy LED	37	SEG 5
3	Rear focus LED	38	SEG 6
4	In-focus LED	39	SEG 7
5	Front focus LED	40	SEG 8
6	Exp. compenstion LED	41	SEG 9
7	NC	42	SEG 10
8	Display erasure	43	SEG 11
9	LC I/O	44	SEG 12
10	Clock	45	SEG 13
11	NC	46	SEG 14
12	I/O	47	SEG 15
13	Xin	48	SEG 16
14	Xout	49	SEG 17
15	Reset	50	SEG 18
16	Vdd	51	SEG 19
17	Analog GND	52	SEG 20
18	Vdd	53	Vss
19	NC	54	Vss
20	VLCD 3	55	
21	VLCD 2	56	
22	VLCD 1	57	
23	Vss	58	
24	COM 0	59	
25	COM 1	60	
26	NC	61	
27	NC	62	
28	Vdd	63	
29	NC	64	
30	SEG 0		
31	SEG 1		
32	SEG 2		
33	SEG 3		
34	NC		
35	NC		

U 6
 JPD78C14A
 (AF CPU>



Pin	Name	Pin	Name
1	Lens mode	36	Store mode
2	NMI	37	Store control
3	INT1	38	6VC
4	MODE 1	39	L. D
5	RESET	40	S T O P
6	'MODE 0	41	Vdd
7	x2	42	D/A
8	x1	43	D/A
9	Vss	44	D/A
10	A Vss	45	D/A
11	ANO	46	D/A
12	AN1	47	3V ON/OFF
13	AN2	48	Filter drive
14	AN3	49	Filter drive
15	AN4	50	R. sig
16	AN5	51	CTL2
17	AN6	52	FOCUS lock
18	AN7	53	L A E
19	'Ref voltage	54	Direction control
20	AVdd	55	A/D sync
21	RD	56	CTL1
22	WR	57	Lens detection
23	ALE	58	Tx
24	φC	59	Rx
25	Spare	60	SCK
26	Filter SW1	61	INT2
27	Filter SW2	62	TO
28	Release SW sig	63	CI
29	AF accept	64	5V ON/OFF
30	" -pre-release Sig		
31	Sensor gain switch		
32	6V external source		
33	Release accept		
34	FAR drive		