

作成承認印

配布許可印



Lite•Touch Zoom 120 ED

FCA45001
FCA45201
FCA45211
FCA45221

PARTS LIST

修理部品表

Nikon | NIKON CORPORATION
Tokyo, Japan

Copyright © 2000 by Nikon Corporation.
All Rights Reserved.

無断転載を禁ず !!

A

B

FCA45001-R.3498.A

1

2

3

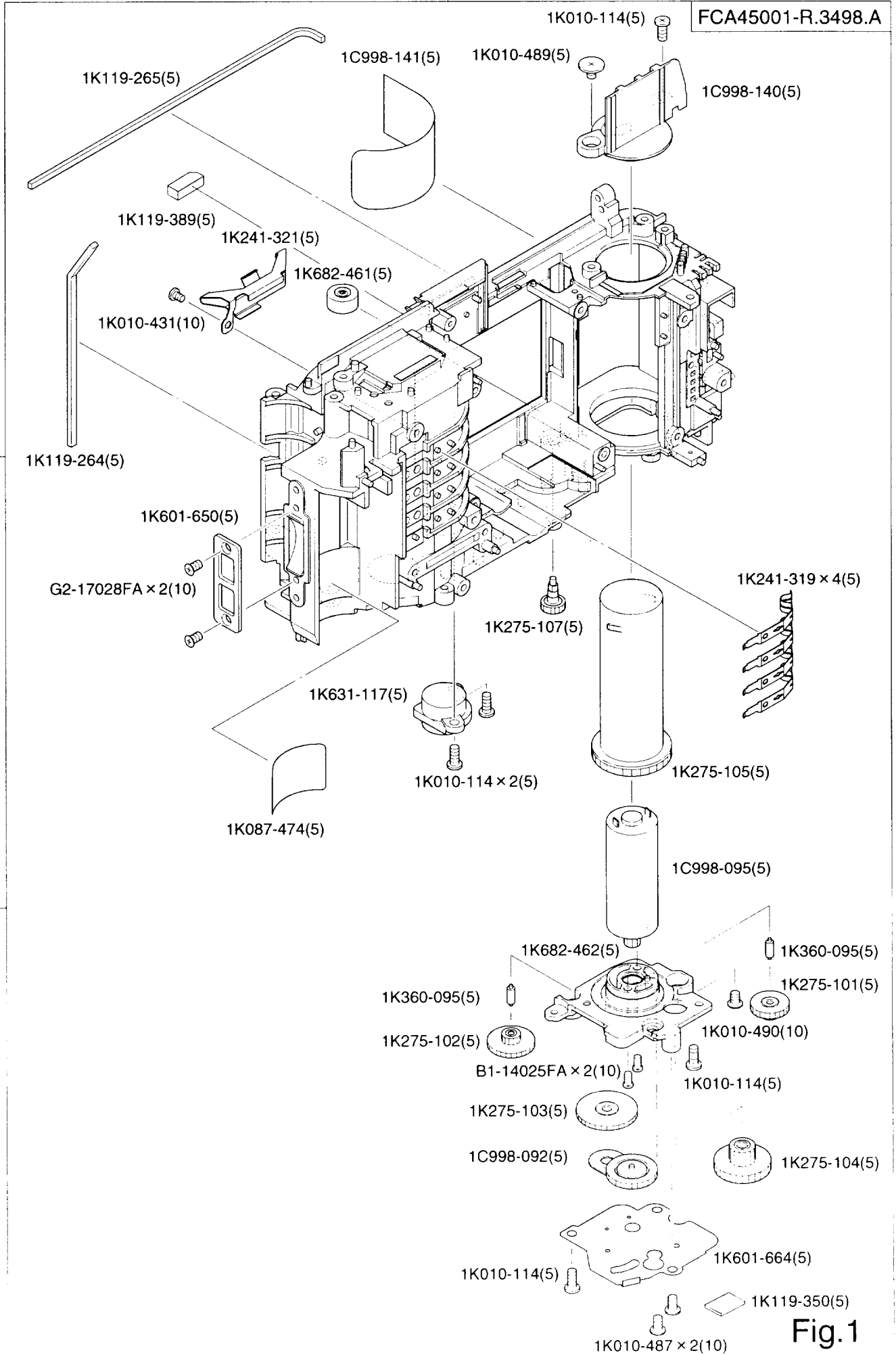


Fig.1

A

B

FCA45001-R.3498.A

1

2

3

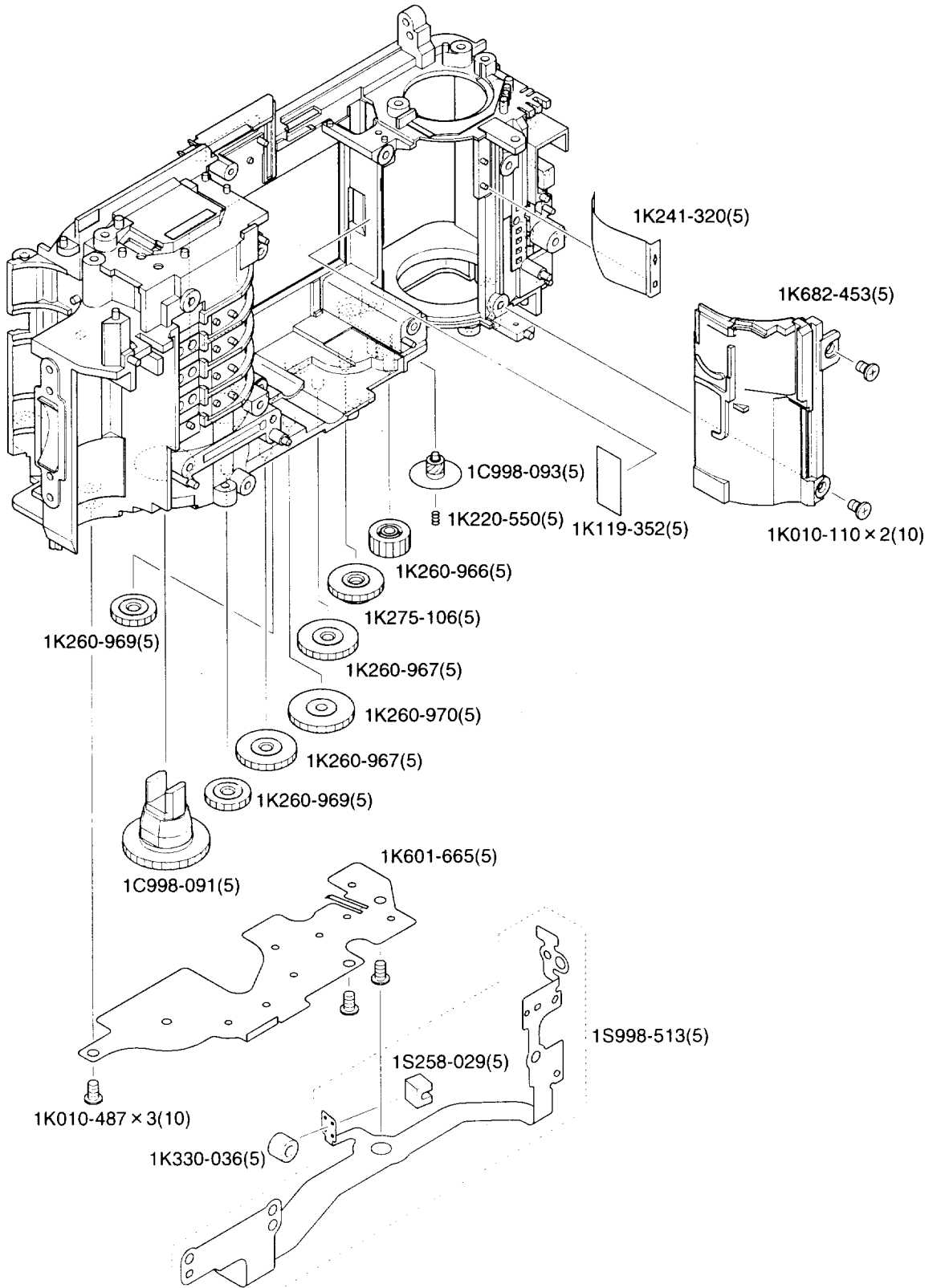


Fig.2

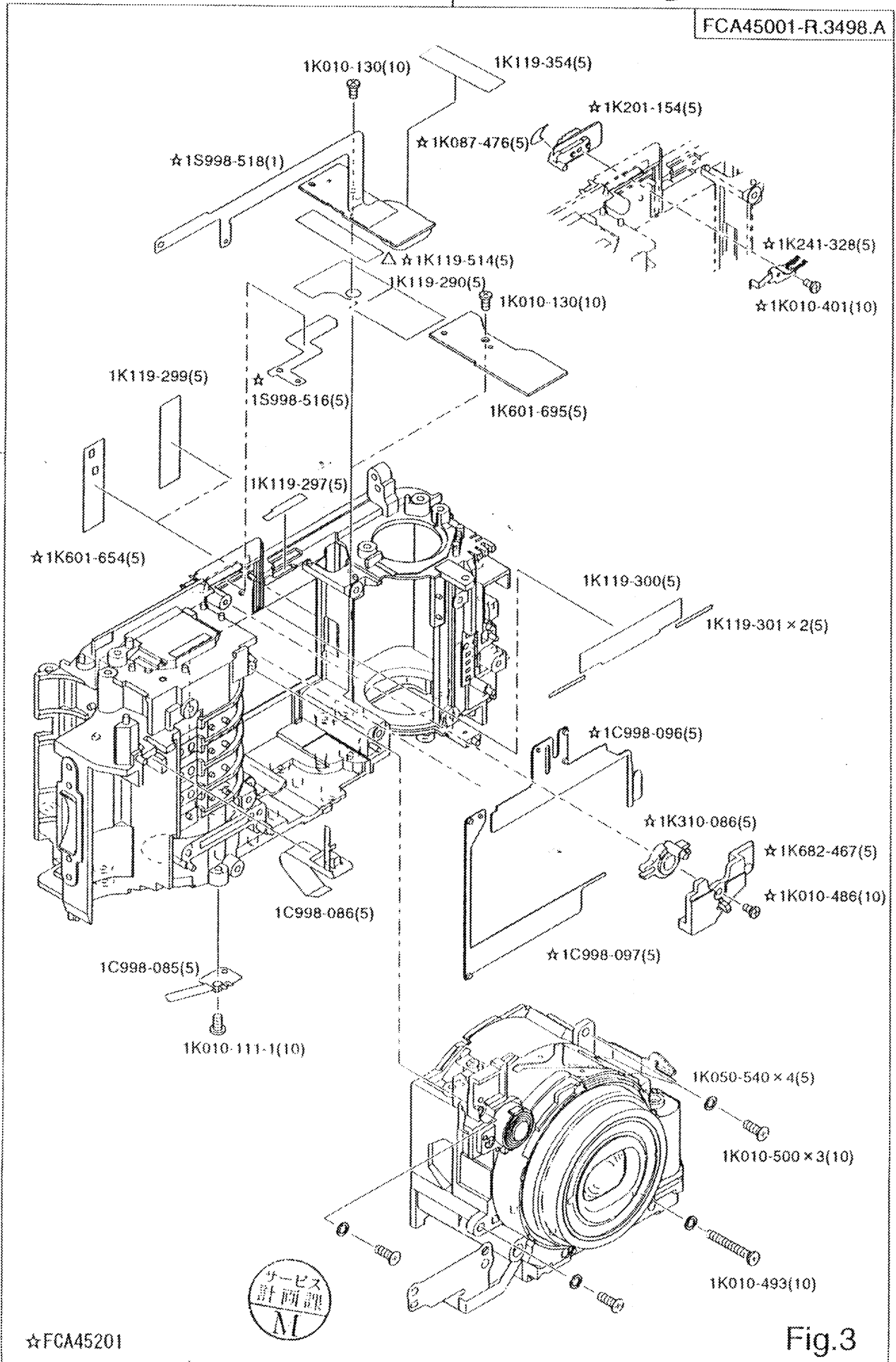
A

B

1

2

3



☆FCA45201

Fig.3

A

B

FCA45001-R.3498.A

1

2

3

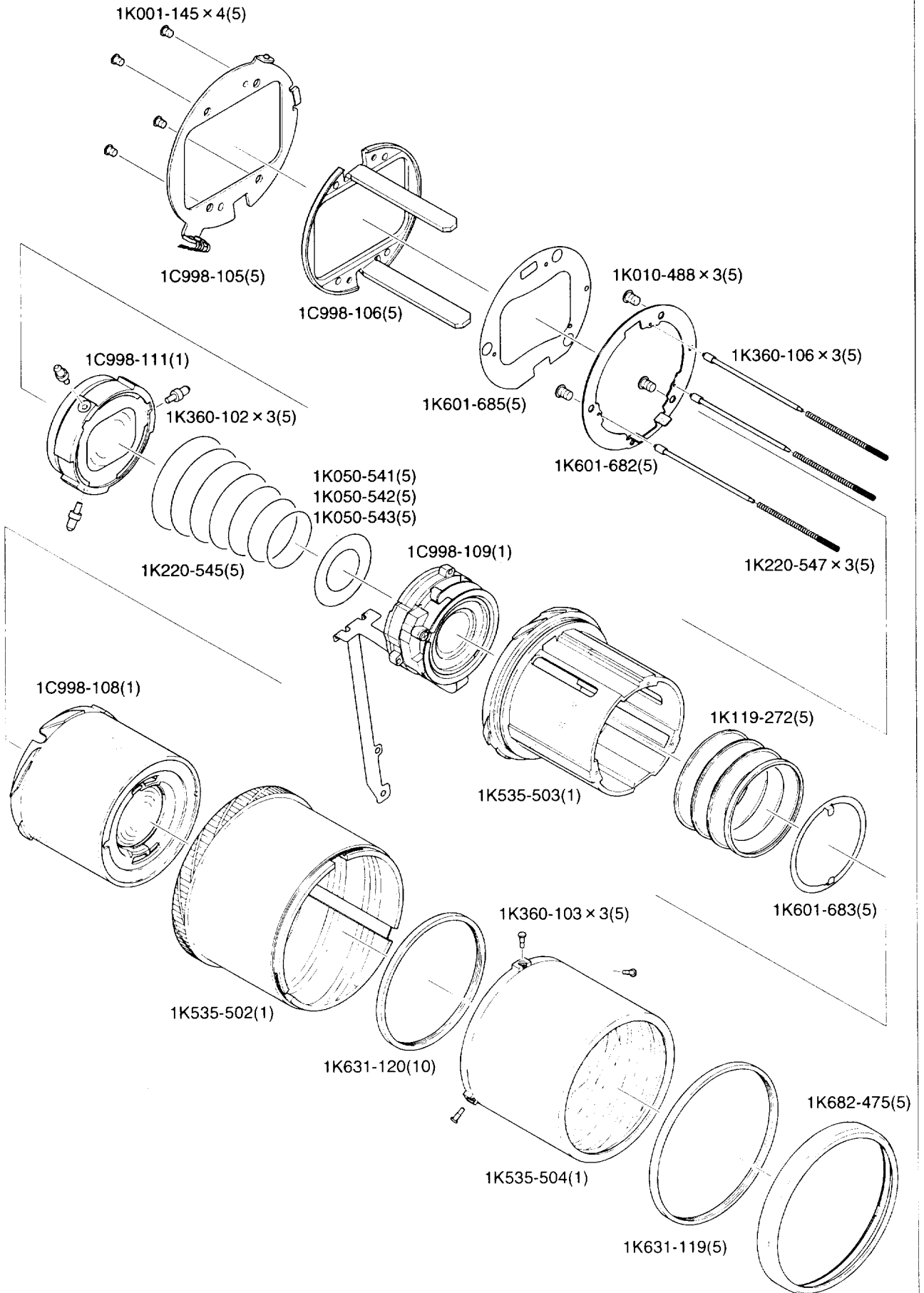


Fig.4

A

B

FCA45001-R.3498.A

1

2

3

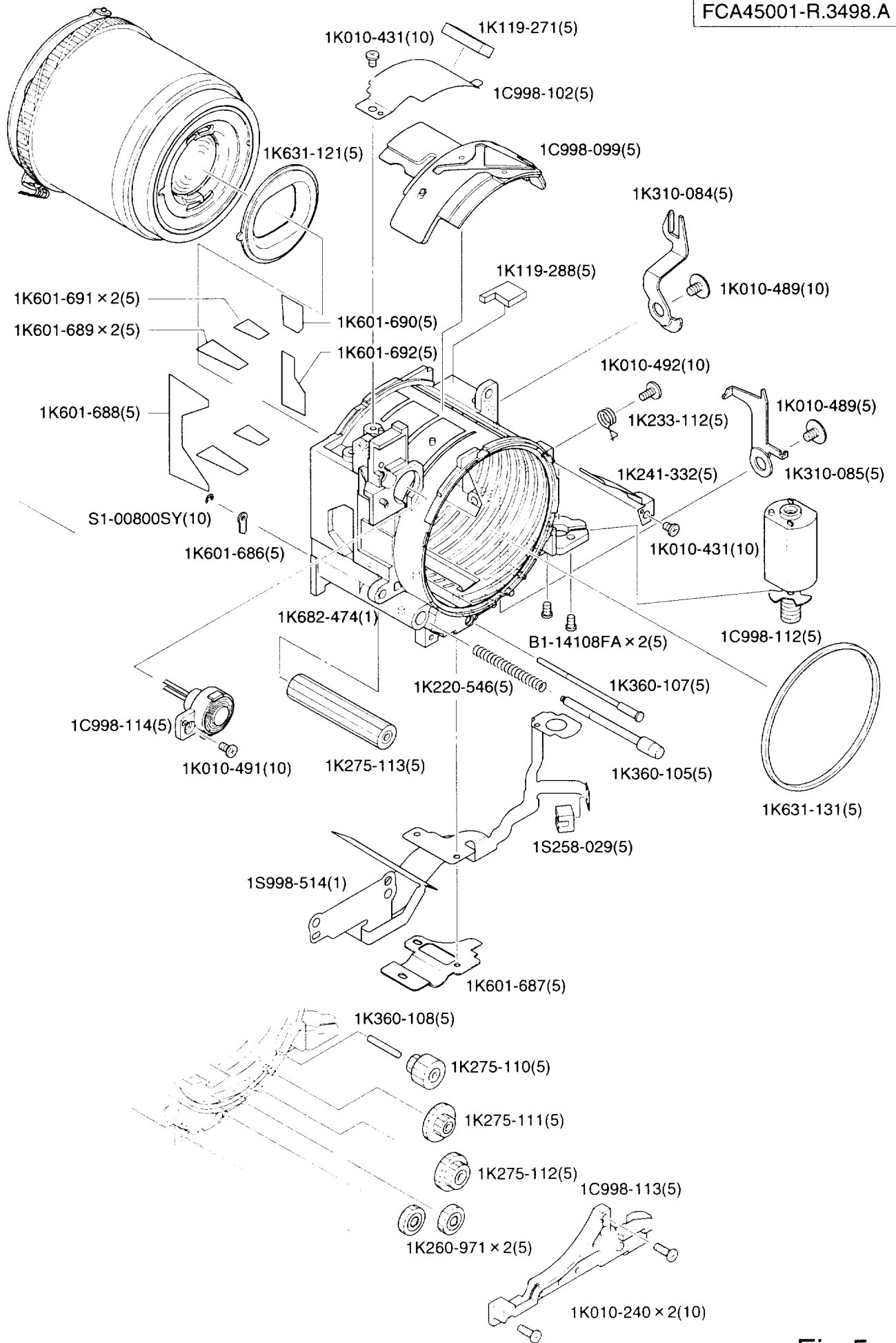


Fig.5

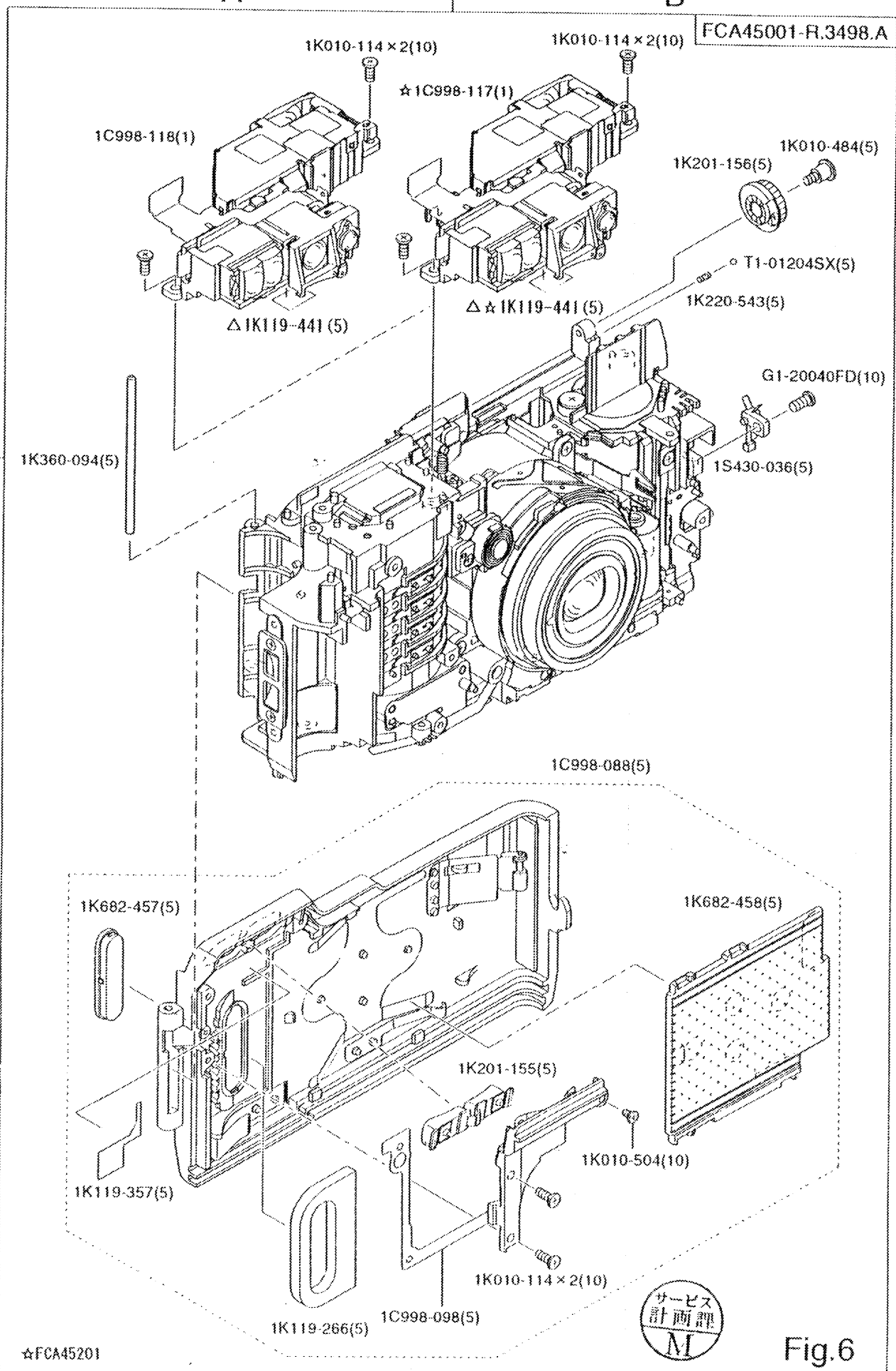
A

B

1

2

3



☆FCA45201

Fig.6

A

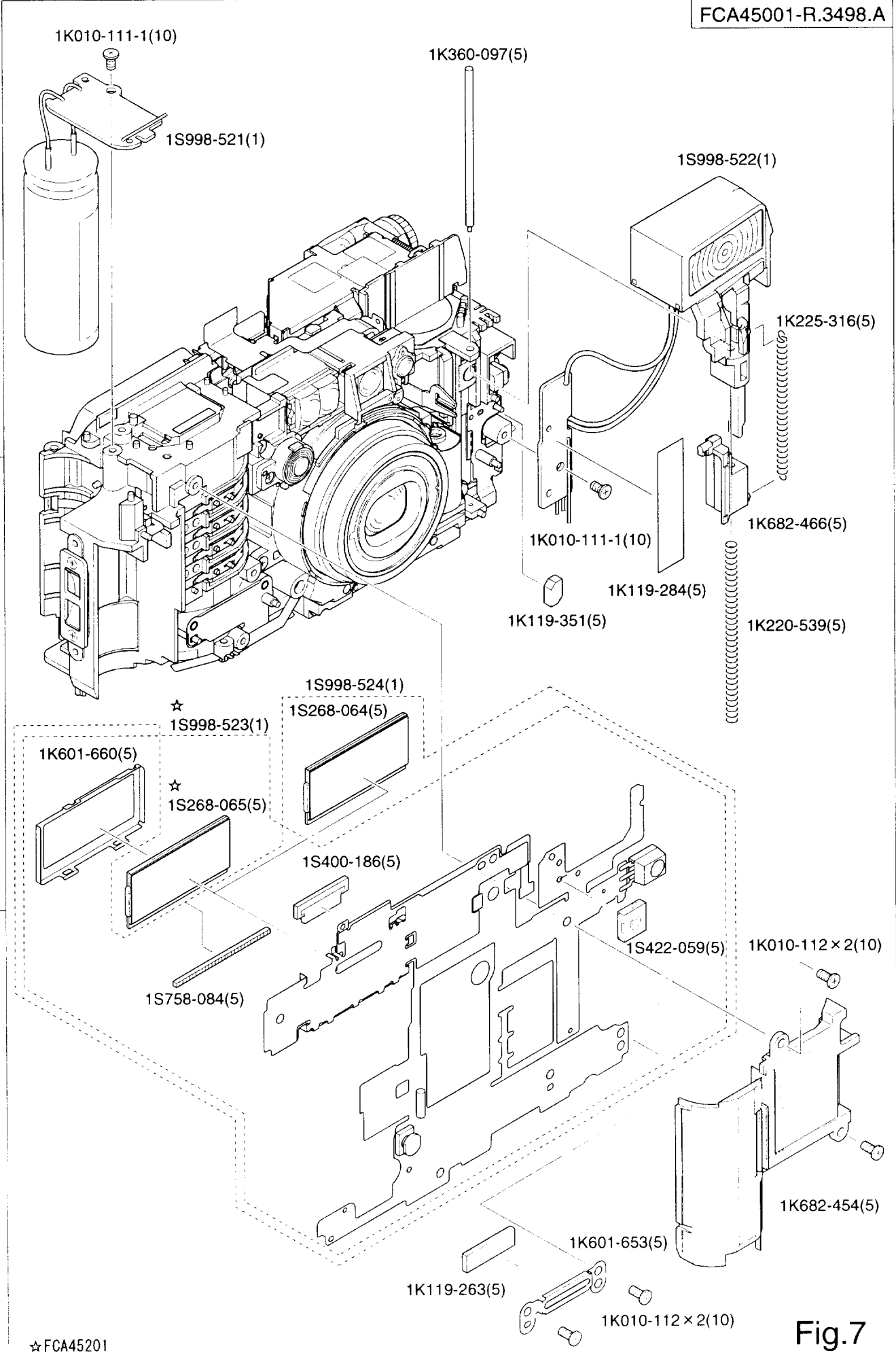
B

FCA45001-R.3498.A

1

2

3



☆FCA45201

Fig.7

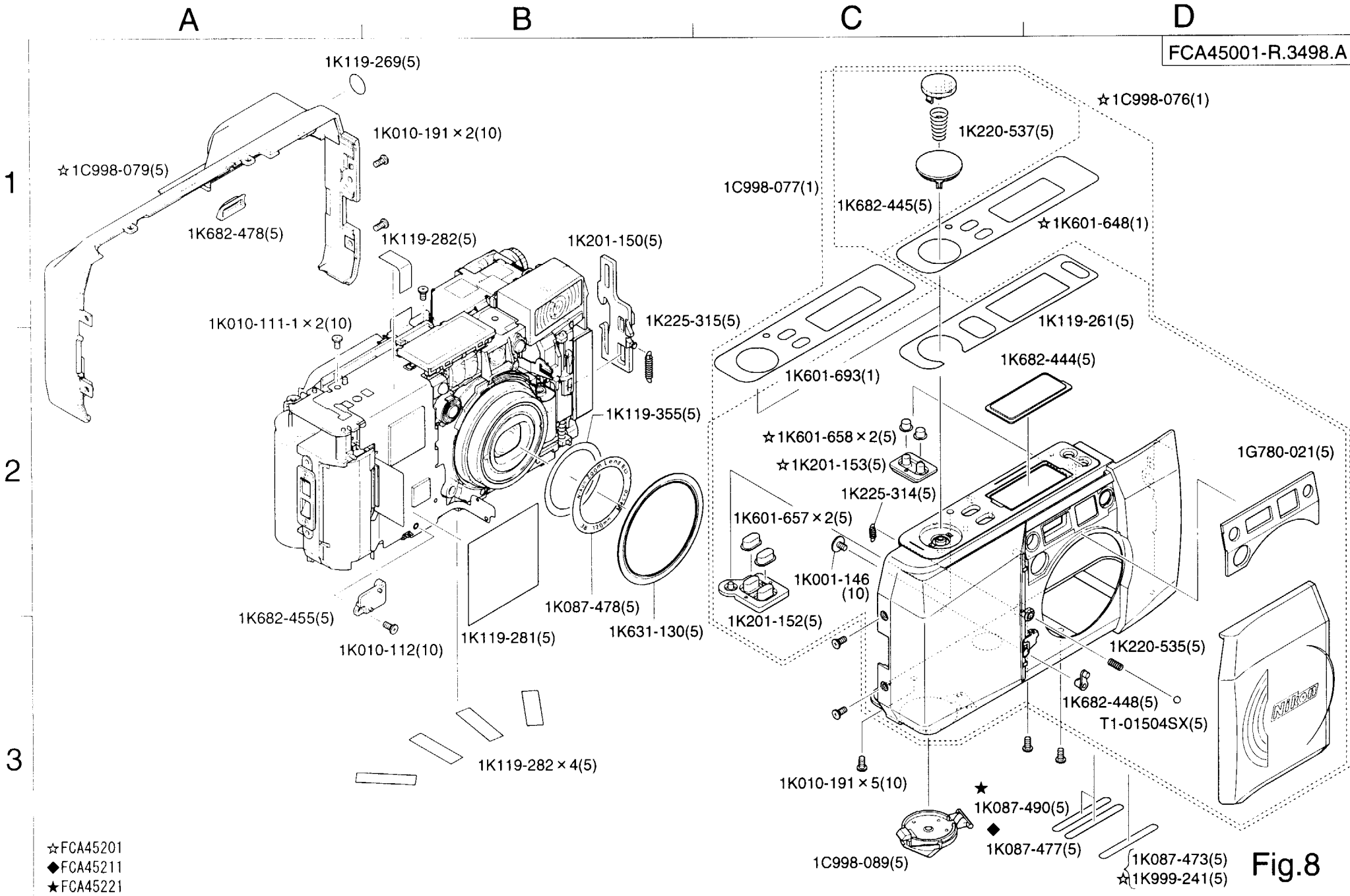


Fig.8

Part List

Lite Touch Zoom 120ED

FCA45001-R.3498.A

| Part Number | Part Code | 名 称 | Part Name | Pcs. /Unit | fig No. | Main Assembly | Term of Deliver | Q'ty/ Order | Remarks |
|---------------|-------------|---------|---------------|---------------|------------|---------------|-----------------------|----------------|---------|
| 1G780-021 | (1G780-021) | ファインダー窓 | FINDER WINDOW | 1 | 8 | 1C998-077 | ○△ | 5 | |
| 1K001-145 | (1K001-145) | SCREW | SCREW | 4 | 4 | | ○ | 10 | |
| 1K001-146 | (1K001-146) | SCREW | SCREW | 1 | 8 | 1C998-077 | ○△ | 10 | |
| 1K010-110 | (1K010-110) | SCREW | SCREW | 2 | 2 | | ○ | 10 | |
| * 1K010-111-1 | (1K010-111) | SCREW | SCREW | 5 | 3.7. 8 | | ○ | 10 | |
| * 1K010-112 | (1K010-112) | SCREW | SCREW | 4 | 7.8 | | ○ | 10 | |
| * 1K010-114 | (1K010-114) | SCREW | SCREW | 11 | 1.6 | 1C998-088 | ○△ | 5 | |
| * 1K010-130 | (1K010-130) | SCREW | SCREW | 2 | 3 | | ○ | 10 | |
| 1K010-191 | (1K010-191) | SCREW | SCREW | 7 | 8 | | ○ | 10 | |
| * 1K010-240 | (1K010-240) | SCREW | SCREW | 2 | 5 | | ○ | 10 | |
| 1K010-431 | (1K010-431) | SCREW | SCREW | 3 | 1.5 | | ○ | 10 | |
| 1K010-484 | (1K010-484) | SCREW | SCREW | 1 | 6 | | ○ | 10 | |
| 1K010-487 | (1K010-487) | SCREW | SCREW | 5 | 1.2 | | ○ | 10 | |
| 1K010-488 | (1K010-488) | SCREW | SCREW | 3 | 4 | | ○ | 10 | |
| 1K010-489 | (1K010-489) | SCREW | SCREW | 3 | 1.5 | | ○ | 5 | |
| 1K010-490 | (1K010-490) | SCREW | SCREW | 1 | 1 | | ○ | 10 | |
| 1K010-491 | (1K010-491) | SCREW | SCREW | 1 | 5 | | ○ | 10 | |

Part List

Lite Touch Zoom 120ED

FGA45001-R.3498.A

| Part Number | Part Code | 名 称 | Part Name | Pcs, /Unit | fig No. | Main Assembly | Term of Deliver | Q'ty/ Order | Remarks |
|-------------|-------------|---------|---------------------------|---------------|------------|---------------|-----------------------|----------------|-------------|
| 1K010-492 | (1K010-492) | SCREW | SCREW | 1 | 5 | | ○ | 10 | |
| 1K010-493 | (1K010-493) | SCREW | SCREW | 1 | 3 | | ○ | 10 | |
| 1K010-500 | (1K010-500) | SCREW | SCREW | 3 | 3 | | ○ | 10 | |
| 1K010-504 | (1K010-504) | SCREW | SCREW | 1 | 6 | 1C998-088 | ○△ | 10 | |
| 1K050-540 | (1K050-540) | ワッシャー | WASHER | 4 | 3 | | ○ | 5 | |
| 1K050-541 | (1K050-541) | ワッシャー | WASHER | 0-1 | 4 | | ○ | 5 | |
| 1K050-542 | (1K050-542) | ワッシャー | WASHER | 0-1 | 4 | | ○ | 5 | |
| 1K050-543 | (1K050-543) | ワッシャー | WASHER | 0-1 | 4 | | ○ | 5 | |
| 1K087-473 | (1K087-473) | ナンバーシール | NUMBER SEAL | 1 | 8 | | ○ | 5 | NO.2002001~ |
| 1K087-474 | (1K087-474) | 電池シール | BATTERY SEAL | 1 | 1 | | ○ | 5 | |
| 1K087-478 | (1K087-478) | 銘板 | NAME PLATE | 1 | 8 | | ○ | 5 | |
| 1K119-261 | (1K119-261) | 両面テープ | DOUBLESIDED ADHESIVE TAPE | 1 | 8 | 1C998-077 | ○△ | 5 | |
| 1K119-263 | (1K119-263) | 圧接ゴム | PRESS CONTACT RUBBER | 1 | 7 | | ○ | 5 | |
| 1K119-264 | (1K119-264) | モルト | SPONGE | 1 | 1 | | ○ | 5 | |
| 1K119-265 | (1K119-265) | モルト | SPONGE | 1 | 1 | | ○ | 5 | |
| 1K119-266 | (1K119-266) | モルト | SPONGE | 1 | 6 | 1C998-088 | ○△ | 5 | |
| 1K119-269 | (1K119-269) | シール | SEAL | 1 | 8 | | ○ | 5 | |

Part List

Lite Touch Zoom 120ED

FCA45001-R.3498.A

| Part Number | Part Code | 名 称 | Part Name | Pcs, /Unit | fig No. | Main Assembly | Term of Deliver | Q'ty/ Order | Remarks |
|-------------|-------------|----------|---------------------------|---------------|------------|---------------|-----------------------|----------------|---------|
| 1K119-271 | (1K119-271) | モルト | SPONGE | 1 | 5 | | ○ | 5 | |
| 1K119-272 | (1K119-272) | 蛇腹ゴム | BELLOWS RUBBER | 1 | 4 | | ○ | 5 | |
| 1K119-281 | (1K119-281) | テープ | TAPE | 1 | 8 | | ○ | 5 | |
| 1K119-282 | (1K119-282) | テープ | TAPE | 5 | 8 | | ○ | 5 | |
| 1K119-284 | (1K119-284) | テープ | TAPE | 1 | 7 | | ○ | 5 | |
| 1K119-288 | (1K119-288) | モルト | SPONGE | 1 | 5 | | ○ | 5 | |
| 1K119-290 | (1K119-290) | 遮光テープ | LIGHT SHIELD TAPE | 1 | 3 | | ○ | 5 | |
| 1K119-297 | (1K119-297) | シート | SHEET | 1 | 3 | | ○ | 5 | |
| 1K119-299 | (1K119-299) | 隠し板 | COVER PLTE | 1 | 3 | | ○ | 5 | |
| 1K119-300 | (1K119-300) | モルト | SPONGE | 1 | 3 | | ○ | 5 | |
| 1K119-301 | (1K119-301) | モルト | SPONGE | 2 | 3 | | ○ | 5 | |
| 1K119-350 | (1K119-350) | 浮き防止板 | SURFACE PREVENT PLATE | 1 | 1 | | ○ | 5 | |
| 1K119-351 | (1K119-351) | SBスイッチ押え | SB SWICH RETAINER | 1 | 7 | | ○ | 5 | |
| 1K119-352 | (1K119-352) | シート | SHEET | 1 | 2 | | ○ | 5 | |
| 1K119-354 | (1K119-354) | 遮光紙 | LIGHT SHIELD PAPER | 1 | 3 | | ○ | 5 | |
| 1K119-355 | (1K119-355) | 両面テープ | DOUBLESIDED ADHESIVE TAPE | 1 | 8 | | ○ | 5 | |
| 1K119-357 | (1K119-357) | モルト | SPONGE | 1 | 6 | 1C998-088 | ○△ | 5 | |

Part List

Lite Touch Zoom 120ED

FCA45001-R.3498.A

| Part Number | Part Code | 名称 | Part Name | Pcs./Unit | fig No. | Main Assembly | Term of Deliver | Q'ty/Order | Remarks |
|-------------|-------------|--------|-----------------------|-----------|---------|---------------|-----------------|------------|---------|
| IK119-389 | (IK119-389) | モルト | SPONGE | 1 | 1 A1 | | ○ | 5 | |
| △ IK119-441 | (IK119-441) | シート | SHEET | 1 | 6 A1 | 1C998-118 | ○△ | 5 | RP-0101 |
| IK201-150 | (IK201-150) | 裏蓋ロック板 | BACK DOOR LOCK PLATE | 1 | 8 B1 | | ○ | 5 | |
| IK201-152 | (IK201-152) | ラバーSW | RUBBER SW | 1 | 8 C2 | 1C998-077 | ○△ | 5 | |
| IK201-155 | (IK201-155) | ズームノブ | ZOOM KNOB | 1 | 6 B3 | 1C998-088 | ○△ | 5 | |
| IK201-156 | (IK201-156) | 視度調ノブ | EYEPIECE DIOPTER KNOB | 1 | 6 B1 | | ○ | 5 | |
| IK220-535 | (IK220-535) | バネ | SPRING | 1 | 8 D3 | 1C998-077 | ○△ | 5 | |
| IK220-537 | (IK220-537) | バネ | SPRING | 1 | 8 C1 | 1C998-077 | ○△ | 5 | |
| IK220-539 | (IK220-539) | バネ | SPRING | 1 | 7 B2 | | ○ | 5 | |
| IK220-543 | (IK220-543) | バネ | SPRING | 1 | 6 B1 | | ○ | 5 | |
| IK220-545 | (IK220-545) | バネ | SPRING | 1 | 4 A2 | | ○ | 5 | |
| IK220-546 | (IK220-546) | バネ | SPRING | 1 | 5 B2 | | ○ | 5 | |
| IK220-547 | (IK220-547) | バネ | SPRING | 3 | 4 B2 | | ○ | 5 | |
| IK220-550 | (IK220-550) | PI押えバネ | PI RETAINER SPRING | 1 | 2 B2 | | ○ | 5 | |
| IK225-314 | (IK225-314) | バネ | SPRING | 1 | 8 C2 | 1C998-077 | ○△ | 5 | |
| IK225-315 | (IK225-315) | バネ | SPRING | 1 | 8 B2 | | ○ | 5 | |
| IK225-316 | (IK225-316) | バネ | SPRING | 1 | 7 B1 | | ○ | 5 | |
| IK233-112 | (IK233-112) | バネ | SPRING | 1 | 5 B2 | | ○ | 5 | |



Part List

Lite Touch Zoom 120ED

FCA45001-R.3498.A

| Part Number | Part Code | 名称 | Part Name | Pcs./Unit | fig No. | Main Assembly | Term of Deliver | Q'ty/Order | Remarks |
|-------------|-------------|---------|----------------------|-----------|---------|---------------|-----------------|------------|---------|
| 1K241-319 | (1K241-319) | DX接片 | DX CONTACT | 4 | 1 | | ○ | 5 | |
| 1K241-320 | (1K241-320) | バネ | SPRING | 1 | 2 | | ○ | 5 | |
| 1K241-321 | (1K241-321) | パトローネ押え | PATRONE RETAINER | 1 | 1 | | ○ | 5 | |
| 1K241-332 | (1K241-332) | バネ | SPRING | 1 | 5 | | ○ | 5 | |
| 1K260-966 | (1K260-966) | 給送ギア8 | FILM ADVANCE GEAR 8 | 1 | 2 | | ○ | 5 | |
| 1K260-967 | (1K260-967) | 給送ギア10 | FILM ADVANCE GEAR 10 | 2 | 2 | | ○ | 5 | |
| 1K260-969 | (1K260-969) | 給送ギア12 | FILM ADVANCE GEAR 12 | 2 | 2 | | ○ | 5 | |
| 1K260-970 | (1K260-970) | 給送ギア13 | FILM ADVANCE GEAR 13 | 1 | 2 | | ○ | 5 | |
| 1K260-971 | (1K260-971) | 鏡筒ギア4 | LENS BARREL GEAR 4 | 2 | 5 | | ○ | 5 | |
| 1K275-101 | (1K275-101) | 給送ギア2 | FILM ADVANCE GEAR 2 | 1 | 1 | | ○ | 5 | |
| 1K275-102 | (1K275-102) | 給送ギア3 | FILM ADVANCE GEAR 3 | 1 | 1 | | ○ | 5 | |
| 1K275-103 | (1K275-103) | 給送ギア4 | FILM ADVANCE GEAR 4 | 1 | 1 | | ○ | 5 | |
| 1K275-104 | (1K275-104) | 給送ギア6 | FILM ADVANCE GEAR 6 | 1 | 1 | | ○ | 5 | |
| 1K275-105 | (1K275-105) | 給送ギア7 | FILM ADVANCE GEAR 7 | 1 | 1 | | ○ | 5 | |
| 1K275-106 | (1K275-106) | 給送ギア9 | FILM ADVANCE GEAR 9 | 1 | 2 | | ○ | 5 | |
| 1K275-107 | (1K275-107) | 給送ギア1 | FILM ADVANCE GEAR 1 | 1 | 1 | | ○ | 5 | |
| 1K275-110 | (1K275-110) | 鏡筒ギア3 | LENS BARREL GRAR 3 | 1 | 5 | | ○ | 5 | |

Part List

Lite Touch Zoom 120ED

FCA45001-R.3498.A

| Part Number | Part Code | 名 称 | Part Name | Pcs. /Unit | fig No. | Main Assembly | Term of Deliver | Q'ty/ Order | Remarks |
|-------------|-------------|----------|----------------------------|---------------|------------|---------------|-----------------------|----------------|---------|
| 1K275-111 | (1K275-111) | 鏡筒ギア1 | LENS BARREL GEAR 1 | 1 | 5 | | ○ | 5 | |
| 1K275-112 | (1K275-112) | 鏡筒ギア2 | LENS BARREL GEAR 2 | 1 | 5 | | ○ | 5 | |
| 1K275-113 | (1K275-113) | 鏡筒ギア6 | LENS BARREL GEAR 6 | 1 | 5 | | ○ | 5 | |
| 1K310-084 | (1K310-084) | SBLレバー1 | SB LEVER 1 | 1 | 5 | | ○ | 5 | |
| 1K310-085 | (1K310-085) | SBLレバー2 | SB LEVER 2 | 1 | 5 | | ○ | 5 | |
| 1K330-036 | (1K330-036) | PI押えゴム | PI RETAINER RUBBER | 1 | 2 | | ○ | 5 | |
| 1K360-094 | (1K360-094) | ヒンジ軸 | HINGE SHAFT | 1 | 6 | | ○ | 5 | |
| 1K360-095 | (1K360-095) | 給送ギア軸2-3 | FILMADVANCE GEAR SHAFT 2-3 | 2 | 1 | | ○ | 5 | |
| 1K360-097 | (1K360-097) | ガイド軸 | GUIDE SHAFT | 1 | 7 | | ○ | 5 | |
| 1K360-102 | (1K360-102) | フォロアピン | PIN | 3 | 4 | | ○ | 5 | |
| 1K360-103 | (1K360-103) | 連動ピン | COUPLING PIN | 3 | 4 | | ○ | 5 | |
| 1K360-105 | (1K360-105) | ロックレバー軸 | LOCK LEVER SHAFT | 1 | 5 | | ○ | 5 | |
| 1K360-106 | (1K360-106) | バネガイド軸 | SPRING GUIDE SHAFT | 3 | 4 | | ○ | 5 | |
| 1K360-107 | (1K360-107) | ギア軸ピン1 | GEAR SHAFT PIN 1 | 1 | 5 | | ○ | 5 | |
| 1K360-108 | (1K360-108) | ギア軸ピン2 | GEAR SHAFT PIN 2 | 1 | 5 | | ○ | 5 | |
| 1K535-502 | (1K535-502) | ヘリコイド環 | HELICOID RING | 1 | 4 | | ○ | 1 | |
| 1K535-503 | (1K535-503) | 中間ヘリコイド環 | INNER HELICOID RING | 1 | 4 | | ○ | 1 | |

Part List

Lite Touch Zoom 120ED

FCA45001-R.3498.A

| Part Number | Part Code | 名 称 | Part Name | Pcs. /Unit | fig No. | Main Assembly | Term of Deliver | Q'ty/ Order | Remarks |
|-------------|-------------|---------|-----------------------------|---------------|------------|---------------|-----------------------|----------------|---------|
| 1K535-504 | (1K535-504) | カム環 | CAM RING | 1 | 4 | | ○ | 1 | |
| 1K601-650 | (1K601-650) | ストラップ板 | STRAP PLATE | 1 | 1 | | ○ | 5 | |
| 1K601-653 | (1K601-653) | 圧接板 | PRESS CONTACT PLATE | 1 | 7 | | ○ | 5 | |
| 1K601-657 | (1K601-657) | キートップ | KEY TOP | 1 | 8 | 1C998-077 | ○△ | 5 | |
| 1K601-660 | (1K601-660) | LCD押え | LCD RETAINER | 1 | 7 | 1S998-524 | ○△ | 5 | |
| 1K601-664 | (1K601-664) | 給送ギア押え板 | FILM ADVANCE RETAINER PLATE | 1 | 1 | | ○ | 5 | |
| 1K601-665 | (1K601-665) | ギア押え板 | GEAR RETAINER PLATE | 1 | 2 | | ○ | 5 | |
| 1K601-682 | (1K601-682) | FPC押え板 | FPC RETAINER PLATE | 1 | 4 | | ○ | 5 | |
| 1K601-683 | (1K601-683) | 蛇腹ゴム止め環 | BELLOWS RUBBER STOPPER RING | 1 | 4 | | ○ | 5 | |
| 1K601-685 | (1K601-685) | ゴースト防止板 | GHOST PREVENT PLATE | 1 | 4 | | ○ | 5 | |
| 1K601-686 | (1K601-686) | ロックレバー | LOCK LEVER | 1 | 5 | | ○ | 5 | |
| 1K601-687 | (1K601-687) | ギアカバー | GEAR COVER | 1 | 5 | | ○ | 5 | |
| 1K601-688 | (1K601-688) | 植毛紙 | FLOCKED SHEET | 1 | 5 | | ○ | 5 | |
| 1K601-689 | (1K601-689) | 植毛紙 | FLOCKED SHEET | 2 | 5 | | ○ | 5 | |
| 1K601-690 | (1K601-690) | 植毛紙 | FLOCKED SHEET | 1 | 5 | | ○ | 5 | |
| 1K601-691 | (1K601-691) | 植毛紙 | FLOCKED SHEET | 2 | 5 | | ○ | 5 | |
| 1K601-692 | (1K601-692) | 植毛紙 | FLOCKED SHEET | 1 | 5 | | ○ | 5 | |

Part List

Lite Touch Zoom 120ED

FCA45001-R.3498.A

| Part Number | Part Code | 名 称 | Part Name | Pcs, /Unit | fig No. | Main Assembly | Term of Deliver | Q'ty/ Order | Remarks |
|-------------|-------------|---------|---------------------------|---------------|------------|---------------|-----------------------|----------------|---------|
| 1K601-693 | (1K601-693) | 上カバー | TOP COVER | 1 | 8 | 1C998-077 | ○△ | 1 | |
| 1K601-695 | (1K601-695) | ダミー基板 | DUMMY BASE PLATE | 1 | 3 | | ○ | 5 | |
| 1K631-117 | (1K631-117) | 三脚座 | TRIPOD SOCKET PEDESTAL | 1 | 1 | | ○ | 5 | |
| 1K631-119 | (1K631-119) | 遮光環 | LIGHT SHIELD RING | 1 | 4 | | ○ | 5 | |
| 1K631-120 | (1K631-120) | 遮光環 | LIGHT SHIELD RING | 1 | 4 | | ○ | 5 | |
| 1K631-121 | (1K631-121) | 飾り環 | DECORATION RING | 1 | 5 | | ○ | 5 | |
| 1K631-130 | (1K631-130) | ゴムカーテン | RUBBER CURTAIN | 1 | 8 | | ○ | 5 | |
| 1K631-131 | (1K631-131) | 暗箱カーテン | FIXED LENS BARREL CURTAIN | 1 | 5 | | ○ | 5 | |
| 1K682-444 | (1K682-444) | LCD窓 | LCD WINDOW | 1 | 8 | 1C998-077 | ○△ | 5 | |
| 1K682-445 | (1K682-445) | リリース釦枠 | RELEASE BUTTON FRAM | 1 | 8 | 1C998-077 | ○△ | 5 | |
| 1K682-448 | (1K682-448) | メインSW軸 | MAIN SW SHAFT | 1 | 8 | 1C998-077 | ○△ | 5 | |
| 1K682-453 | (1K682-453) | スプールカバー | SPOOL COVER | 1 | 2 | | ○ | 5 | |
| 1K682-454 | (1K682-454) | DXカバー | DX COVER | 1 | 7 | | ○ | 5 | |
| 1K682-455 | (1K682-455) | メインSW基板 | MAIN SW BASE PLATE | 1 | 8 | | ○ | 5 | |
| 1K682-457 | (1K682-457) | フィルム窓 | FILM WINDOW | 1 | 6 | 1C998-088 | ○△ | 5 | |
| 1K682-458 | (1K682-458) | 圧板 | PRESSURE PLATE | 1 | 6 | 1C998-088 | ○△ | 5 | |
| 1K682-461 | (1K682-461) | ローラー | ROLLER | 1 | 1 | | ○ | 5 | |

Part List

Lite Touch Zoom 120ED

FCA45001-R.3498.A

| Part Number | Part Code | 名 称 | Part Name | Pcs, /Unit | fig No. | Main Assembly | Term of Deliver | Q'ty/ Order | Remarks |
|-------------|---------------|-----------|------------------------------|---------------|------------|---------------|-----------------------|----------------|---------|
| 1K682-462 | (1K682-462) | 給送ギア基板 | FILM ADVANCE GEAR BASE PLATE | 1 | 1 | | ○ | 5 | |
| 1K682-466 | (1K682-466) | SBスライド枠 | SB SLIDE FRAM | 1 | 7 | | ○ | 5 | |
| 1K682-474 | (1K682-474) | 暗箱 | FIXED LENS BARREL | 1 | 5 | | ○ | 1 | |
| 1K682-475 | (1K682-475) | 遮光環押え | LIGHT SHIELD RING RETAINER | 1 | 4 | | ○ | 5 | |
| 1K682-478 | (1K682-478) | パノラマ隠し板 | PANORAMA SHIELD PLATE | 1 | 8 | | ○ | 5 | |
| 1S258-029 | (1S258-029) | フォトインタラプタ | PHOTO INTERRUPTER | 2 | 2.5 | 1S998-513 | ○△ | 5 | |
| 1S268-064 | (1S268-064) | LCD | LCD | 1 | 7 | 1S998-524 | ○△ | 5 | |
| 1S400-186 | (1S400-186) | コネクター | CONNECTOR | 1 | 7 | 1S998-524 | ○△ | 5 | |
| 1S422-059 | (1S422-059) | リリースSW | RELEASE SW | 1 | 7 | 1S998-524 | ○△ | 5 | |
| 1S430-036 | (1S430-036) | 裏蓋SW | BACK DOOR SW | 1 | 6 | | ○ | 5 | |
| 1S758-084 | (1S758-084) | ゼブラコネクター | ELASTIC CONNECTER | 1 | 7 | 1S998-524 | ○△ | 5 | |
| B1-14018FA | (B1-14018FA) | SCREW | SCREW | 2 | 5 | | ○ | 10 | |
| B1-14025FA | (B1-14025FA) | SCREW | SCREW | 2 | 1 | | ○ | 10 | |
| G1-20040FD | (G1-20040FD) | SCREW | SCREW | 1 | 6 | | ○ | 10 | |
| G2-17028FA | (G2-17028FA) | SCREW | SCREW | 2 | 1 | | ○ | 10 | |
| S1-00800SY | (S1-00800SY) | Eリング | E RING | 1 | 5 | | ○ | 10 | |
| T1-01204SX1 | (T1-01204SX1) | クリックボール | CLICK BALL | 1 | 6 | | ○ | 10 | |

Part List

Lite Touch Zoom 120ED

FCA45001-R.3498.A

| Part Number | Part Code | 名称 | Part Name | Pcs, /Unit | fig No. | Main Assembly | Term of Deliver | Q'ty/ Order | Remarks |
|-------------|---------------|---------------|--------------------------------|---------------|------------|---------------|-----------------------|----------------|---------|
| T1-01504SX1 | (T1-01504SX1) | クリックボール | CLICK BALL | 1 | 8 | 1C998-077 | ○△ | 10 | |
| 1C998-077 | (1C998-077) | 前カバー部組 | FRONT COVER UNIT | 1 | 8 | | | 1 | |
| 1C998-085 | (1C998-085) | 電池接片+部組 | BATTERY CONTACT(+)UNIT | 1 | 3 | | | 5 | |
| 1C998-086 | (1C998-086) | 電池接片-部組 | BATTERY CONTACT(-)UNIT | 1 | 3 | | | 5 | |
| 1C998-088 | (1C998-088) | 裏蓋部組 | BACK DOOR UNIT | 1 | 6 | | | 1 | |
| 1C998-089 | (1C998-089) | 電池蓋部組 | BATTERY LID UNIT | 1 | 8 | | | 5 | |
| 1C998-091 | (1C998-091) | フォークギア部組 | FORK GEAR UNIT | 1 | 2 | | | 5 | |
| 1C998-092 | (1C998-092) | 遊星アーム部組 | PLANETARY ARM UNIT | 1 | 1 | | | 5 | |
| 1C998-093 | (1C998-093) | フォトインタラプタ円盤部組 | PHOTO INTERRUPTER DISK UNIT | 1 | 2 | | | 5 | |
| 1C998-095 | (1C998-095) | 給送モーター部組 | FILM ADVANCE MOTOR UNIT | 1 | 1 | | | 5 | |
| 1C998-098 | (1C998-098) | ズーム遮光ブロック部組 | ZOOM LIGHT SHIELD BLOCK UNIT | 1 | 6 | 1C998-088 | | 5 | |
| 1C998-099 | (1C998-099) | ファインダーカム部組 | FINDER CAM UNIT | 1 | 5 | | | 5 | |
| 1C998-102 | (1C998-102) | ファインダー遮光板部組 | FINDER LIGHT SHIELD PLATE UNIT | 1 | 5 | | | 5 | |
| 1C998-105 | (1C998-105) | 直進キー当て板部組 | LINER KEY STOPPER UNIT | 1 | 4 | | | 5 | |
| 1C998-106 | (1C998-106) | 直進キー部組 | LINER KEY UNIT | 1 | 4 | | | 5 | |
| 1C998-108 | (1C998-108) | 1群レンズ室部組 | 1ST LENS HOUSING UNIT | 1 | 4 | | | 1 | |
| 1C998-109 | (1C998-109) | 2群レンズ室部組 | 2ND LENS HOUSING UNIT | 1 | 4 | | | 1 | |

Part List

Lite Touch Zoom 120ED

FCA45001-R.3498.A

| Part Number | Part Code | 名 称 | Part Name | Pcs, /Unit | fig No. | Main Assembly | Term of Deliver | Q'ty/ Order | Remarks |
|-------------|-------------|-------------|----------------------------------|---------------|------------|---------------|-----------------------|----------------|---------|
| 1C998-111 | (1C998-111) | 3群レンズ室部組 | 3RD LENS HOUSING UNIT | 1 | 4 | | | 1 | |
| 1C998-112 | (1C998-112) | 鏡筒モーター部組 | LENS TUBU MOTOR UNIT | 1 | 5 | | | 5 | |
| 1C998-113 | (1C998-113) | ギアカバー部組 | GEAR COVER UNIT | 1 | 5 | | | 5 | |
| 1C998-114 | (1C998-114) | AF補助光部組 | AF ASSIT LAMP UNIT | 1 | 5 | | | 5 | |
| 1C998-118 | (1C998-118) | ファインダー部組 | FINDER UNIT | 1 | 6 | | | 1 | |
| 1C998-140 | (1C998-140) | 給送モーター押え部組 | FILM ADVANCE MOTOR RETAINER UNIT | 1 | 1 | | | 5 | |
| 1C998-141 | (1C998-141) | フィルムガイド部組 | FILM GUIDE UNIT | 1 | 1 | | | 5 | |
| 1S998-513 | (1S998-513) | 中継FPC部組 | RELAY FPC UNIT | 1 | 2 | | | 1 | |
| 1S998-514 | (1S998-514) | 鏡筒エンコーダー部組 | LENZ BARREL ENCODER UNIT | 1 | 5 | | | 1 | |
| 1S998-521 | (1S998-521) | メインコンデンサー部組 | MAIN CONDENSER UNIT | 1 | 7 | | | 1 | |
| 1S998-522 | (1S998-522) | ストロボ発光部部組 | SB LIGHT EMITTING UNIT | 1 | 7 | | | 1 | |
| 1S998-524 | (1S998-524) | メインFPC部組 | MAIN FPC UNIT | 1 | 7 | | | 1 | |

Part List

Lite Touch Zoom 120ED QD

FCA45201-R.3498.A

| Part Number | Part Code | 名称 | Part Name | Pcs./Unit | fig No. | Main Assembly | Term of Deliver | Q'ty/Order | Remarks |
|-------------|-------------|------------|--------------------------|-----------|---------|---------------|-----------------|------------|-------------|
| * 1K010-401 | (1K010-401) | SCREW | SCREW | 1 | 3 B1 | | ○ | 10 | |
| 1K010-486 | (1K010-486) | SCREW | SCREW | 1 | 3 B2 | | ○ | 10 | |
| 1K087-476 | (1K087-476) | パノラマシール | PANORAMA SEAL | 1 | 3 B1 | | ○ | 5 | |
| △ 1K119-441 | (1K119-441) | シート | SHEET | 1 | 6 B1 | 1C998-117 | ○△ | 5 | RP-0101 |
| △ 1K119-514 | (1K119-514) | シート | SHEET | 1 | 3 A1 | | ○ | 5 | RP-0101 |
| 1K201-153 | (1K201-153) | ラバーSW | RUBBER SW | 1 | 8 C2 | 1C998-076 | ○△ | 5 | |
| 1K201-154 | (1K201-154) | パノラマノブ | PANORAMA KNOB | 1 | 3 B1 | | ○ | 5 | |
| 1K241-328 | (1K241-328) | バネ | SPRING | 1 | 3 B1 | | ○ | 5 | |
| 1K310-086 | (1K310-086) | 回転レバー | TURN LEVER | 1 | 3 B2 | | ○ | 5 | |
| 1K601-648 | (1K601-648) | 上カバー | TOP COVER | 1 | 8 D1 | 1C998-076 | ○△ | 1 | |
| 1K601-654 | (1K601-654) | 遮光板 | LIGHT SHIELD PLATE | 1 | 3 A2 | | ○ | 5 | |
| 1K601-658 | (1K601-658) | キートップ | KEY TOP | 2 | 8 C2 | 1C998-076 | ○△ | 5 | |
| 1K682-467 | (1K682-467) | マスク押え | MASK RETAINER | 1 | 3 B2 | | ○ | 5 | |
| 1K999-241 | (1K999-241) | ナンバーシール | NUMBER SEAL | 1 | 8 D3 | | ○ | 5 | NO.3001001~ |
| 1S268-065 | (1S268-065) | LCD | LCD | 1 | 7 A2 | 1S998-523 | ○△ | 5 | |
| 1C998-076 | (1C998-076) | 前カバー部組(QD) | FRONT COVER UNIT (QD) | 1 | 8 D1 | | | 1 | |
| 1C998-079 | (1C998-079) | 後カバー部組 | REAR COVER UNIT | 1 | 8 A1 | | | 1 | |
| 1C998-096 | (1C998-096) | パノラマ枠上部組 | UPPER PANORAMA FRAM UNIT | 1 | 3 B2 | | | 5 | |
| 1C998-097 | (1C998-097) | パノラマ枠下部組 | UNDER PANORAMA FRAM UNIT | 1 | 3 B3 | | | 5 | |



Part List

Lite Touch Zoom 120ED QD

FCA45201-R.3498.A

| Part Number | Part Code | 名 称 | Part Name | Pcs./Unit | fig No. | Main Assembly | Term of Deliver | Q'ty/Order | Remarks |
|-------------|-------------|--------------|-------------------|-----------|---------|---------------|-----------------|------------|---------|
| 1C998-117 | (1C998-117) | ファインダー部組(QD) | FINDER UNIT (QD) | 1 | 6 | | | 1 | |
| 1S998-516 | (1S998-516) | パノラマFPC部組 | PANORAMA FPC UNIT | 1 | 3 | | | 5 | |
| 1S998-518 | (1S998-518) | デートモジュール部組 | DATE MODULE UNIT | 1 | 3 | | | 1 | |
| 1S998-523 | (1S998-523) | メインFPC部組(QD) | MAIN FPC UNIT(QD) | 1 | 7 | | | 1 | |

Part List

Lite Touch Zoom 120ED

FCA45211-R.3498.A

| Part Number | Part Code | 名 称 | Part Name | Pcs. /Unit | fig No. | Main Assembly | Term of Deliver | Q'ty/ Order | Remarks |
|-------------|-------------|------------|------------------------------|---------------|------------|---------------|-----------------------|----------------|---------|
| 1K087-477 | (1K087-477) | 原産地シール(日本) | CUNTRY OF ORIGIN SEAL(JAPAN) | 1 | 8 | | ○ | 5 | |

