

# VMA'S SATELLITE BLOG

## VMA'S SATELLITE BLOG

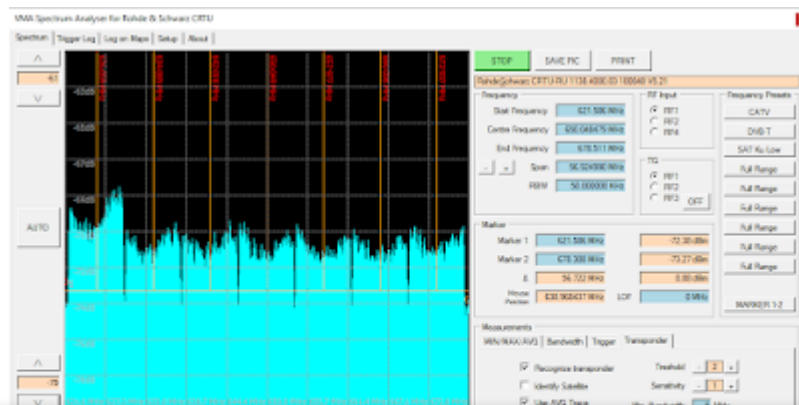
Welcome to VMA's Satellite Blog! Read about terrestrial, cable and satellite TV and spectrum analysis.

HOME · DISCLAIMER AND PRIVACY POLICY · DOWNLOAD PAGE

May 20, 2018

## VMA SIMPLE SPECTRUM ANALYSER FOR ROHDE&SCHWARZ CRTU AND CMU200 - DOWNLOAD PAGE

### VMA Simple Spectrum Analyser for Rohde&Schwarz CRTU and CMU200 - Download Page



Ads by Google

Stop seeing this ad    Why this ad? ▶

## VMA'S SATELLITE BLOG

[Download Latest Version](#)

### Change Log:

2020-04-10: Fixed wrong MATH MEM Label colour

2018-04-06: Added DEBUG button in SETUP tab to help solving connection problems

2018-03-25: First Tracking Generator implementation  
Further VISA handling improvements

2018-03-24: Spectrum reads CRTU settings upon start  
RF Input port selectable  
Several bug fixes and optimisations

2018-03-11: VISA settings are now stored in Registry

2018-02-26: Adapted GUI to R&S CRTU

2018-02-25: First release

### Features:

- different visualization modes (LIVE, MIN, MAX, AVG traces; "Fade" mode, 3D spectogram)
- transponder recognition
- satellite recognition by transponder pattern matching
- record & playback of spectrum
- bandwidth measurement (-3dB, -6dB and -60db)
- MIN, MAX, AVG db values
- two marker with indication of delta frequency and delta db
- 9 configurable frequency presets
- GPS functionality, including Google Maps measurement plotting
- MATH operations
- SWR measurement
- Trace export to CSV
- ...

### Important:

This software requires *Keysight Connection Expert 2018*, which can be downloaded for free here:



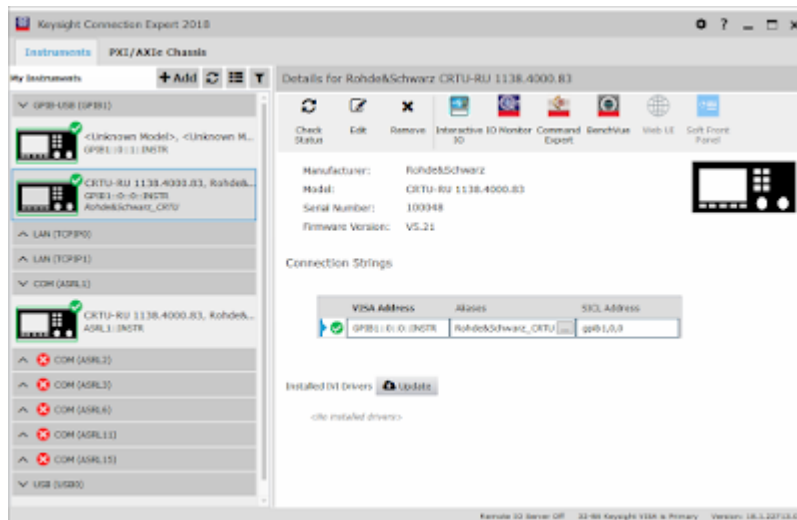
Ads by Google

Stop seeing this ad

Why this ad?

## VMA'S SATELLITE BLOG

You need to setup the VISA connection in *Keysight Connection Expert 2018*:



For this to work, you need to configure the *Remote* settings of your CRTU/CMU200:

**SCPI Connection:**

Port = GPIB, Com1, Com2 or GPIB + Com1

Primary Address [GPIB]

Primary Address = 0 (or whatever you want)

Secondary Address [GPIB]

Address1 = RF Mode = Non-Signalling

**For RS232 connection go to Comm. tab and configure as follows:**

Com1/Com2:

Application = Remote

Baudrate = 115200 (requires FW 4.x or higher)

Data Bits = 8

Stop Bits = 1

Parity = none

Protocol = CtsRts

**It is recommended to use a USB-GPIB interface:**

Ads by Google

Stop seeing this ad

Why this ad? ▶

## VMA'S SATELLITE BLOG



Agilent 82357B

Share

### COMMENTS



Enter your comment...



## The #1 WP Theme 2021

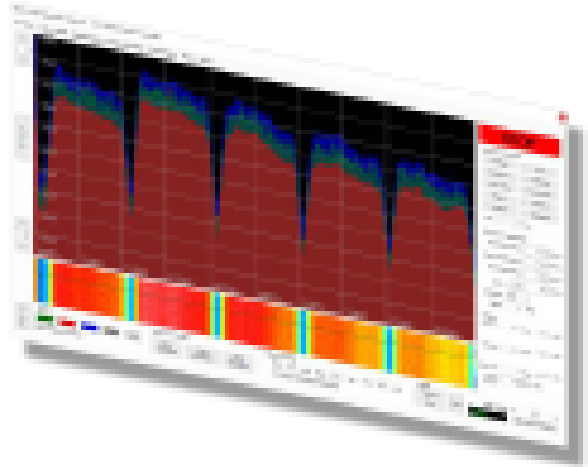
Looking for the best WP The world? We built it.

Ads by Google

Stop seeing this ad

Why this ad?

## VMA'S SATELLITE BLOG



December 16, 2016

### VMA SIMPLE SPECTRUM ANALYSER - DOWNLOAD THE LATEST VERSION HERE!

Share 17 comments

Ad




GD... D070A... 00D10... Y0D5... 0... A... I...



Ads by Google

Stop seeing this ad

Why this ad? 

## VMA'S SATELLITE BLOG

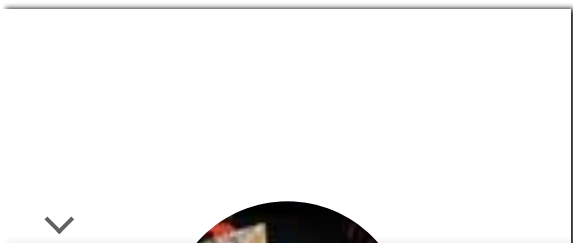


July 23, 2019

### VMA SIMPLE SPECTRUM ANALYSER: GEEKCREIT® SPECTRUM ANALYZER USB LTDZ 35-4400M IS NOW SUPPORTED!

Share 9 comments

Powered by Blogger



Ads by Google

Stop seeing this ad

Why this ad? ▶

## VMA'S SATELLITE BLOG

### VISIT PROFILE

Archive

Report Abuse

Total Pageviews

359,372



Ads by Google

Stop seeing this ad

Why this ad? 