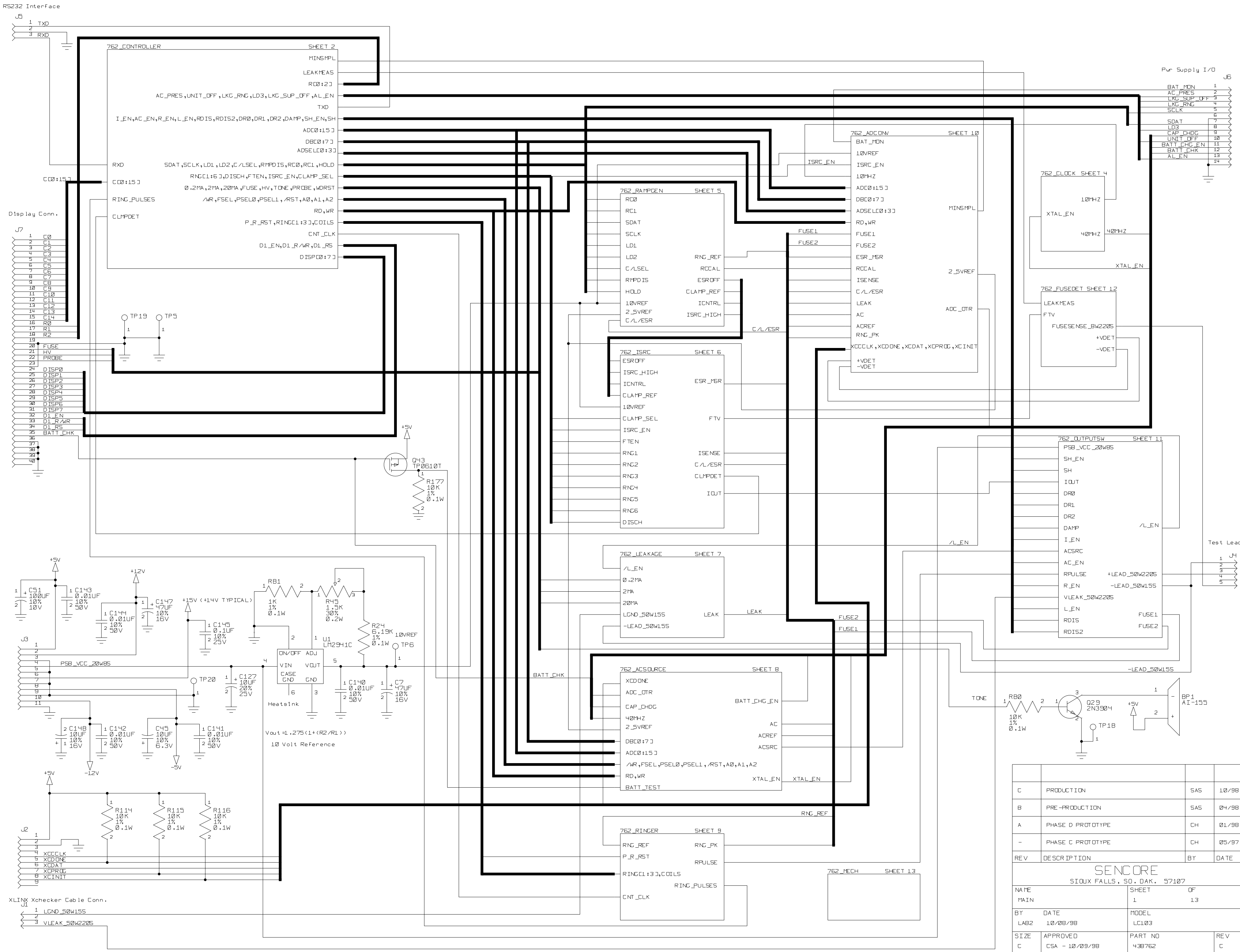


REV	DESCRIPTION	BY	DATE
C	OPTIMIZATION	BRC	10/98
B	PREPRODUCTION	BRC	04/98
A	PHASE D PROTOTYPE	BTC	01/98
-	PHASE C PROTOTYPE	AG	07/97

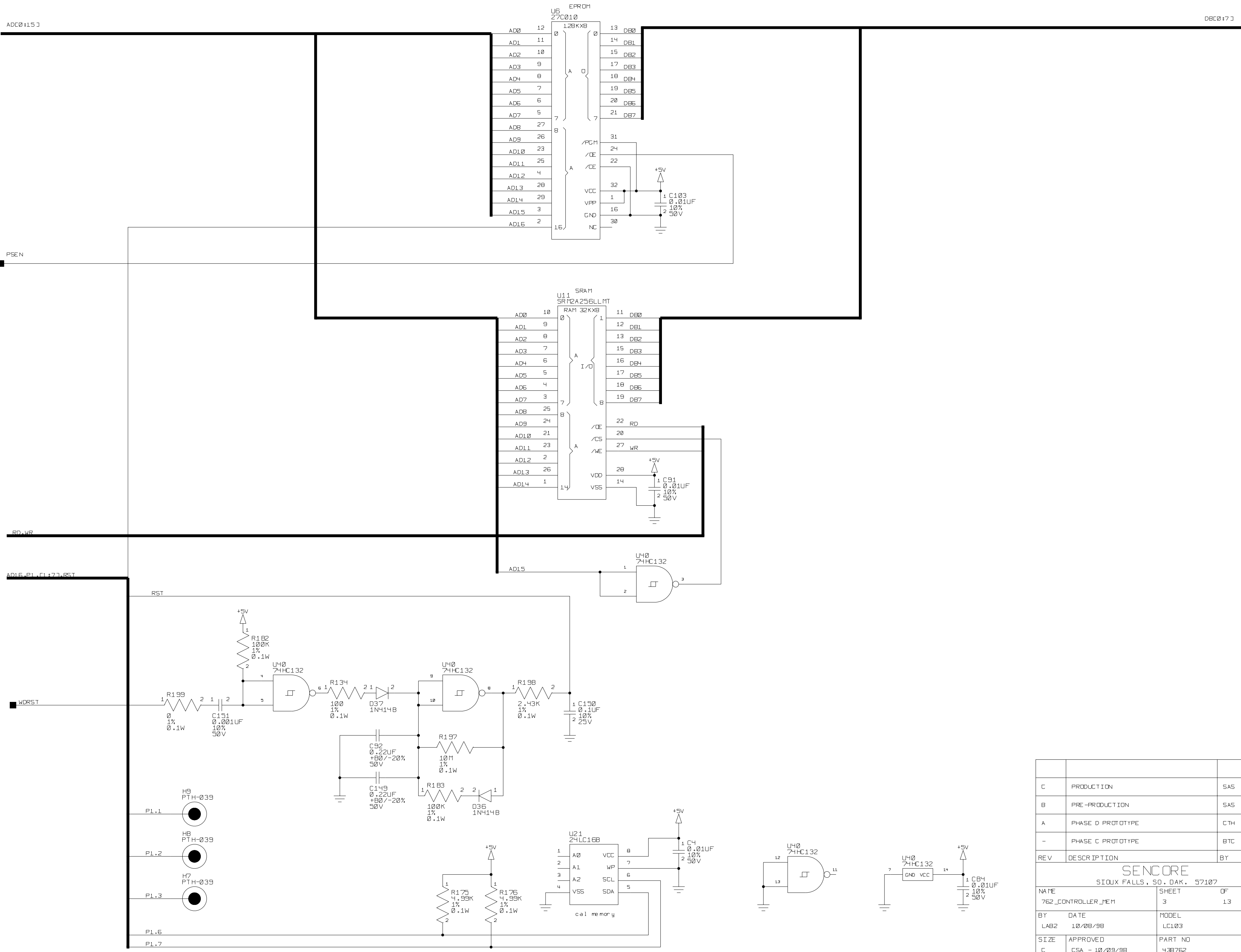
SEN CORE
SIOUX FALLS, SO. DAK. 57107

NAME	POWER SUPPLY	SHEET	OF
BY	DATE	MODEL	
SIZE	APPROVED	PART NO	REV
C	CSA - 10/09/98	438760	C

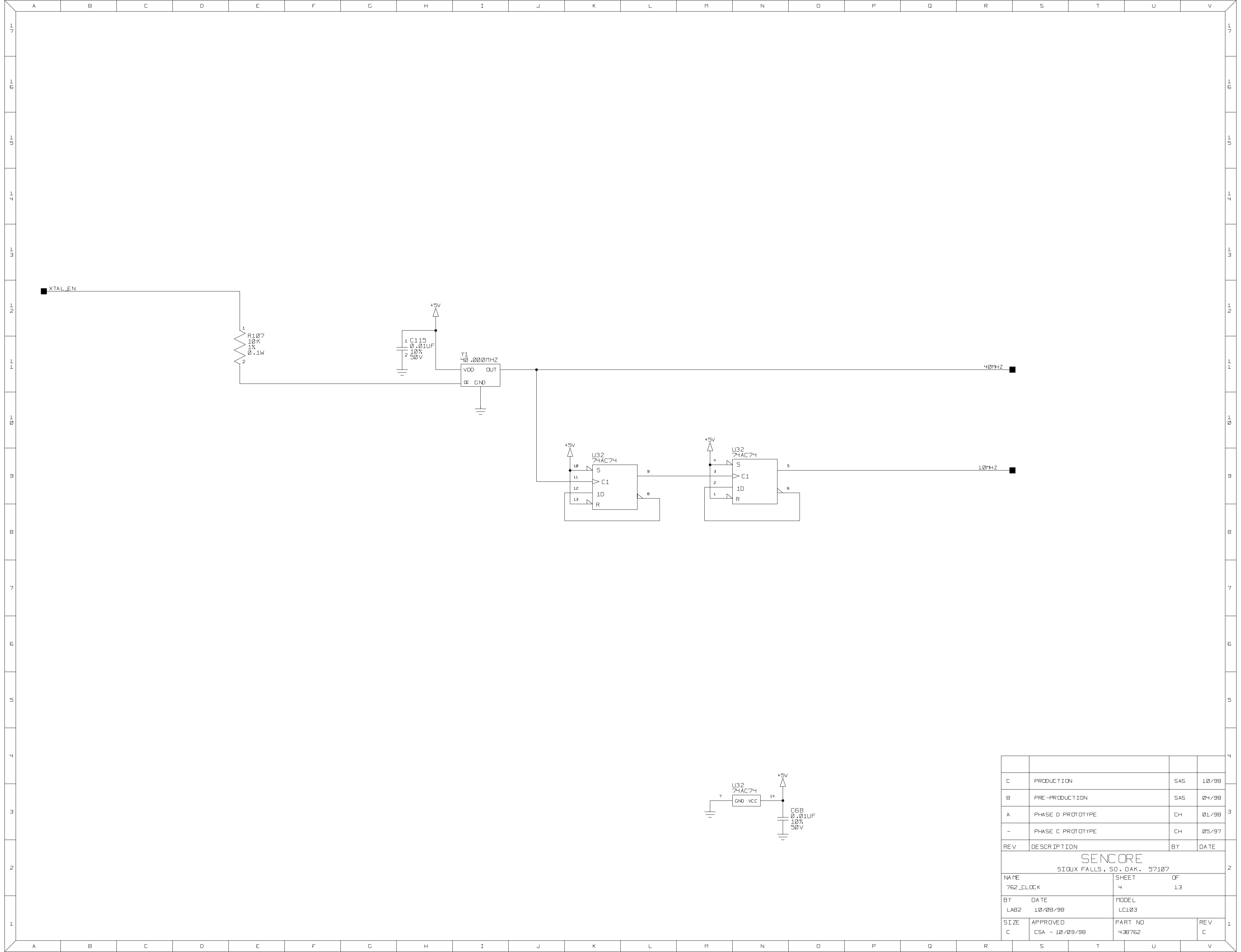


REV	DESCRIPTION	BY	DATE
C	PRODUCTION	SAS	10/98
B	PRE-PRODUCTION	SAS	04/98
A	PHASE D PROTOTYPE	CH	01/98
-	PHASE C PROTOTYPE	CH	05/97

SEN CORE			
SIOUX FALLS, SO. DAK. 57107			
NAME	SHEET	OF	
MAIN	1	13	
BY	DATE	MODEL	
LAB2	10/08/98	LC103	
SIZE	APPROVED	PART NO	REV
C	CSA - 10/09/98	438762	C

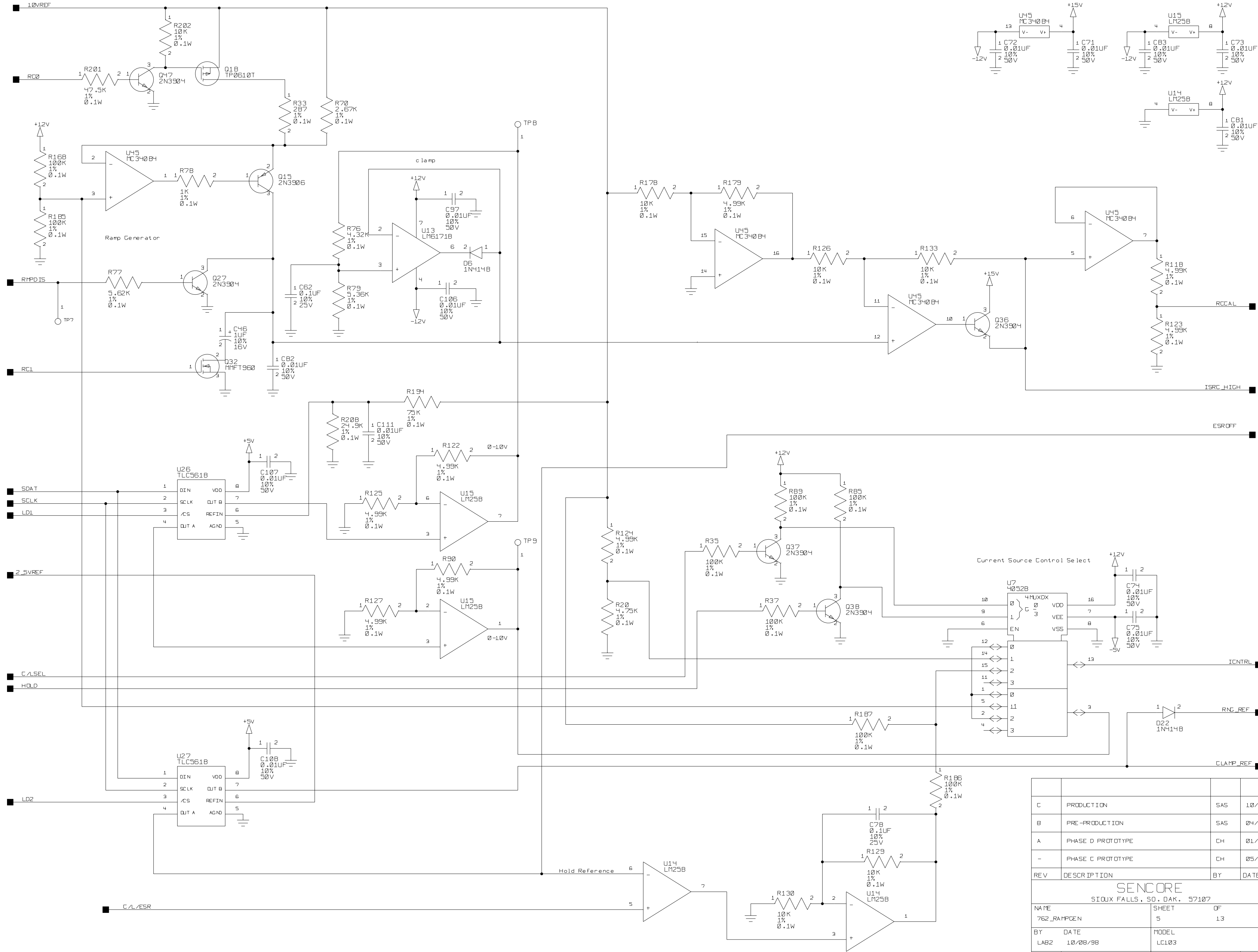


C	PRODUCTION	SAS	10/98
B	PRE-PRODUCTION	SAS	04/98
A	PHASE D PROTOTYPE	CTH	01/98
-	PHASE C PROTOTYPE	BTC	10/97
REV	DESCRIPTION	BY	DATE
SENCORE SIOUX FALLS, SO. DAK. 57107			
NAME	762_CONTROLLER_MEM	SHEET	OF 13
BY	DATE	LAB2	MODEL
	10/08/98		LC103
SIZE	APPROVED	PART NO	REV
C	CSA - 10/09/98	438762	C



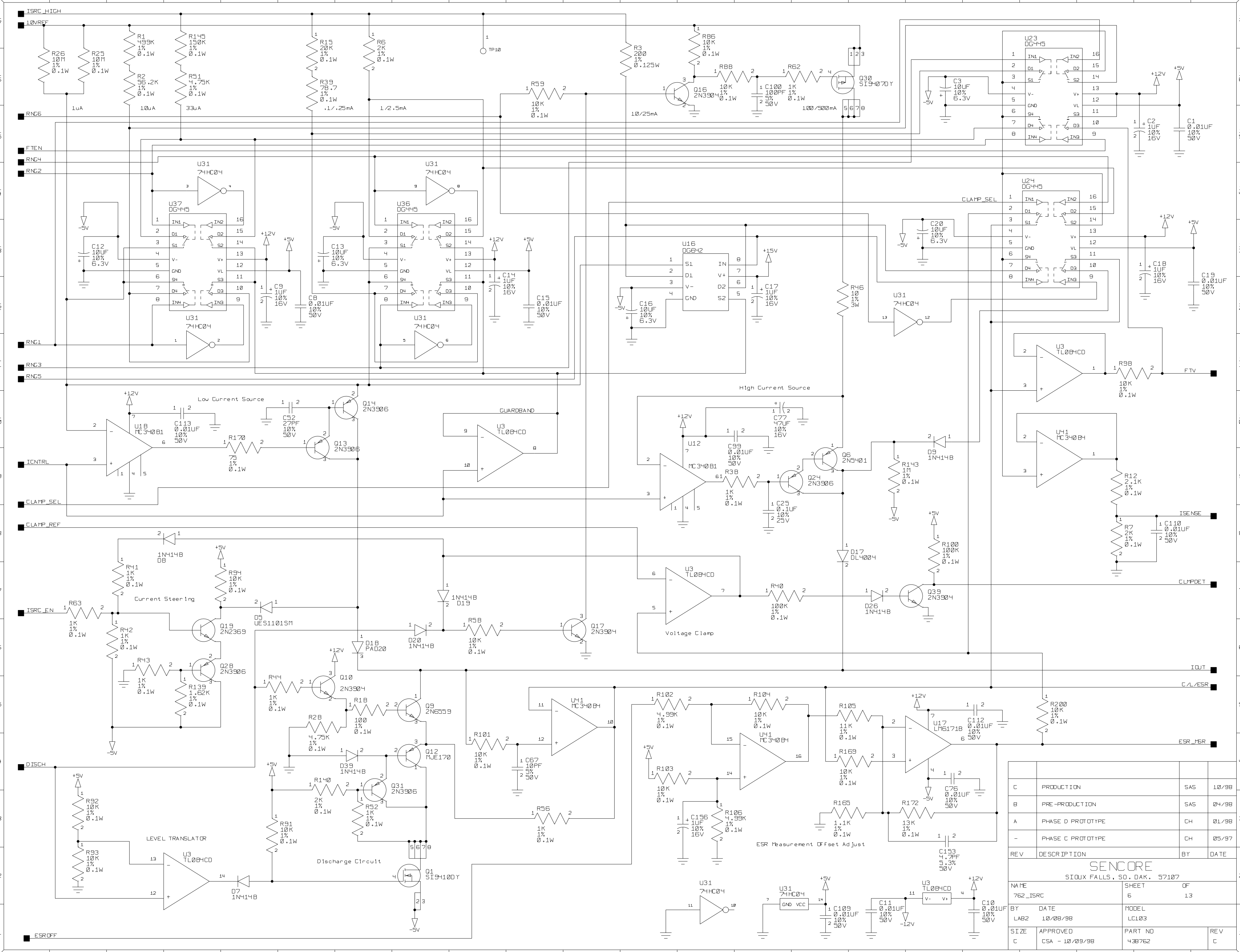
REV	DESCRIPTION	BY	DATE
C	PRODUCTION	SAS	10/98
B	PRE-PRODUCTION	SAS	04/98
A	PHASE D PROTOTYPE	CH	01/98
-	PHASE C PROTOTYPE	CH	05/97

SENCORE SIOUX FALLS, SO. DAK. 57107			
NAME	SHEET		OF
762_CLOCK	4	13	
BY	DATE	MODEL	
LAB2	10/08/98	LC103	
SIZE	APPROVED	PART NO	REV
C	CSA - 10/09/98	438762	C



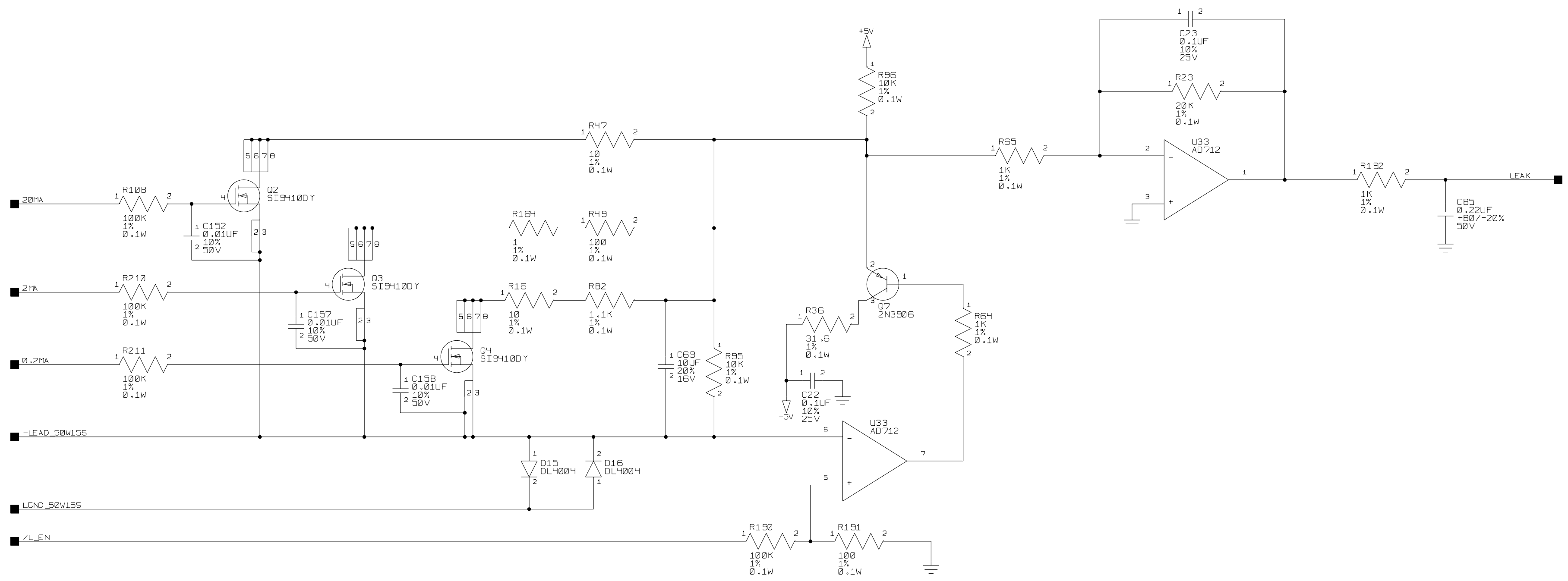
REV	DESCRIPTION	BY	DATE
C	PRODUCTION	SAS	10/98
B	PRE-PRODUCTION	SAS	04/98
A	PHASE D PROTOTYPE	CH	01/98
-	PHASE C PROTOTYPE	CH	05/97

SENCORE			
SIOUX FALLS, SO. DAK. 57107			
NAME	762_RAMPGEN	SHEET	OF
		5	13
BY	DATE	MODEL	
LAB2	10/08/98	LC103	
SIZE	APPROVED	PART NO	REV
C	CSA - 10/09/98	438762	C

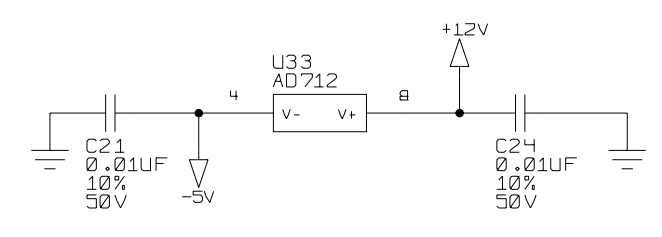


REV	DESCRIPTION	BY	DATE
C	PRODUCTION	SAS	10/98
B	PRE-PRODUCTION	SAS	04/98
A	PHASE D PROTOTYPE	CH	01/98
-	PHASE C PROTOTYPE	CH	05/97

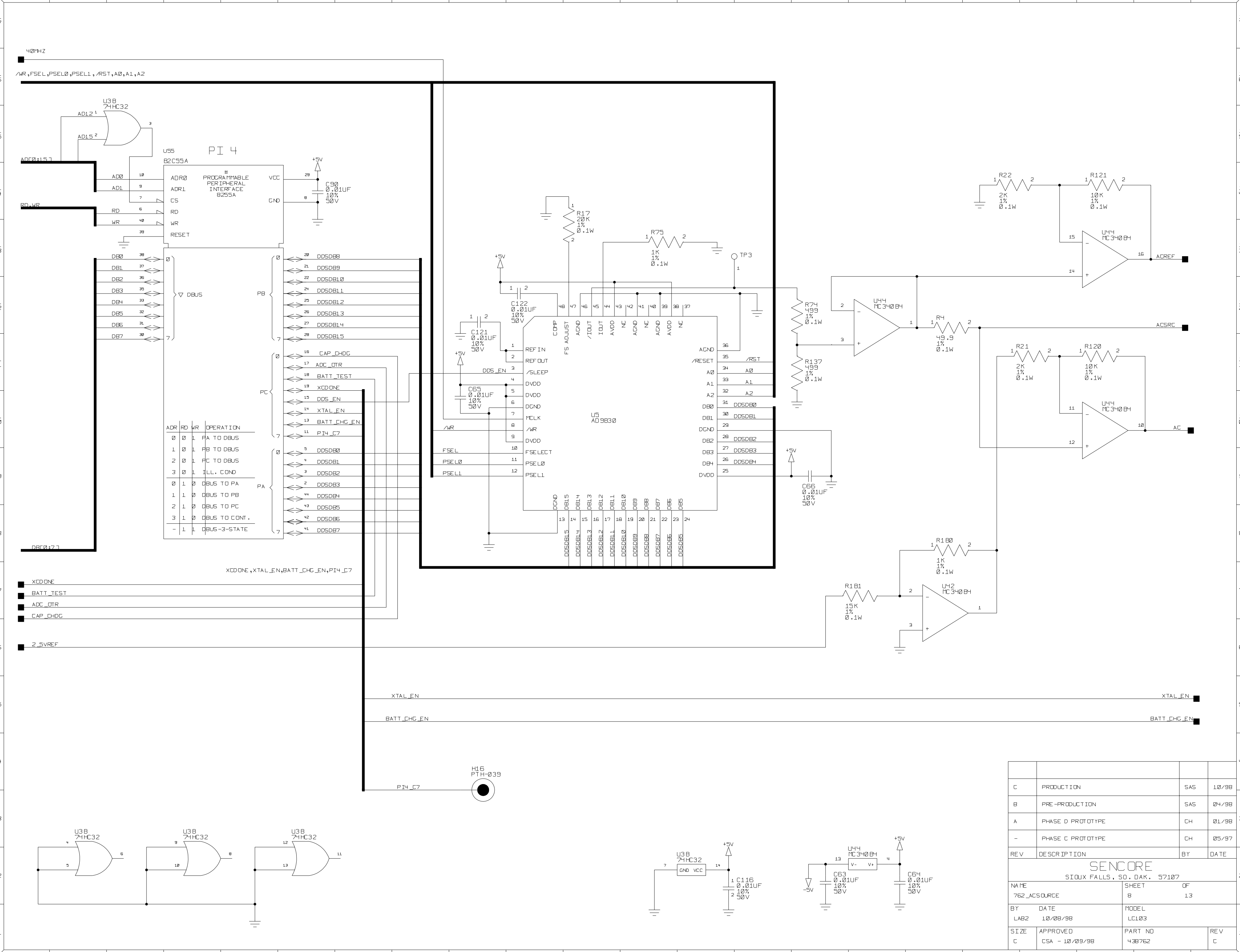
SEN CORE			
SIQUX FALLS, SO. DAK. 57107			
NAME	762_ISRC	SHEET	OF
		6	13
BY	DATE	MODEL	
LAB2	10/08/98	LC103	
SIZE	APPROVED	PART NO	REV
C	CSA - 10/09/98	438762	C

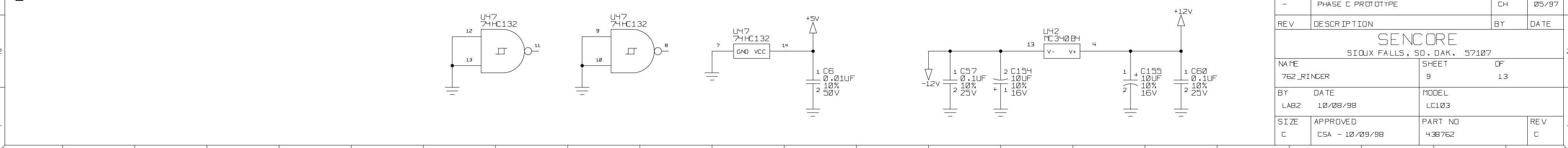
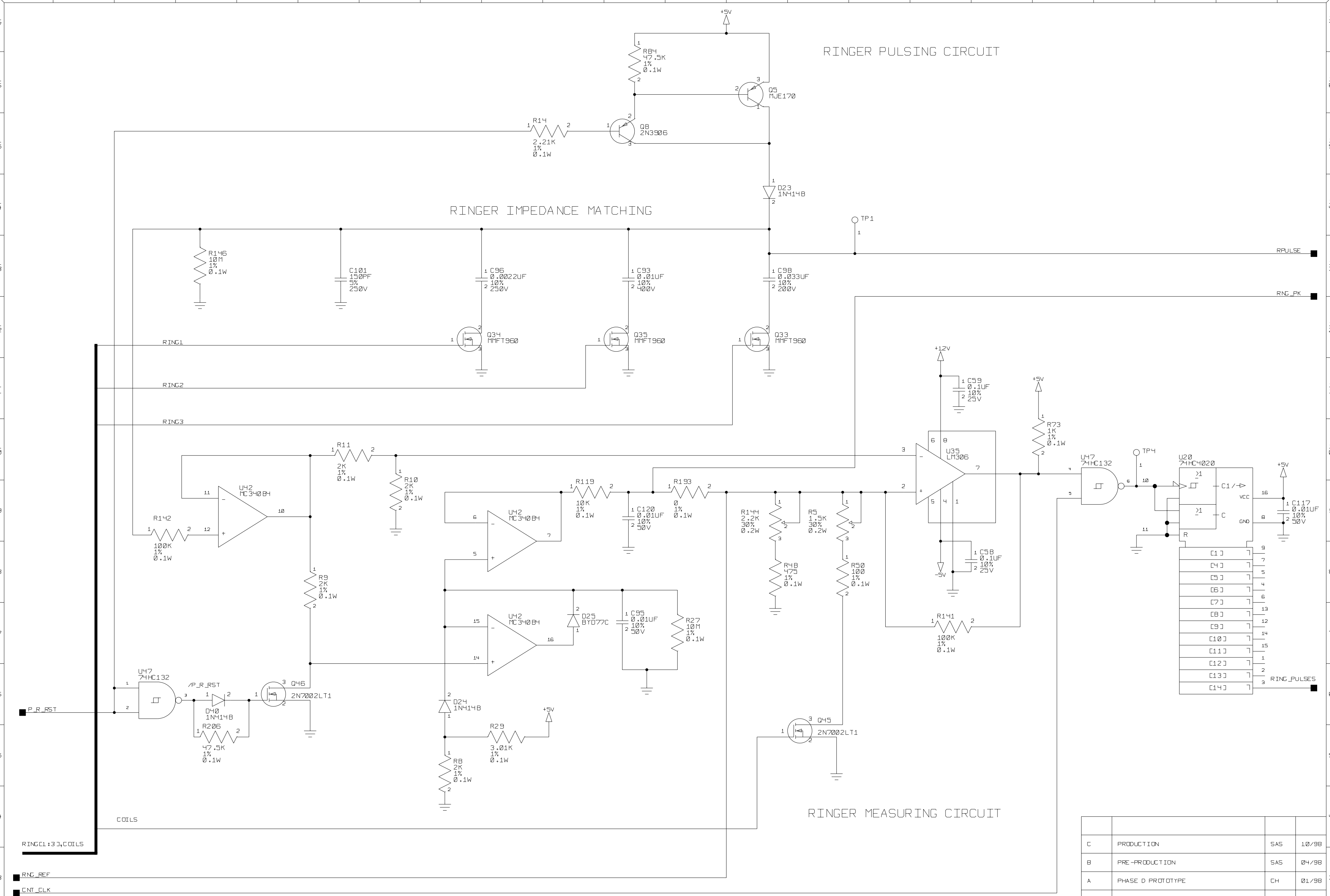


Leakage Current to Voltage Converter



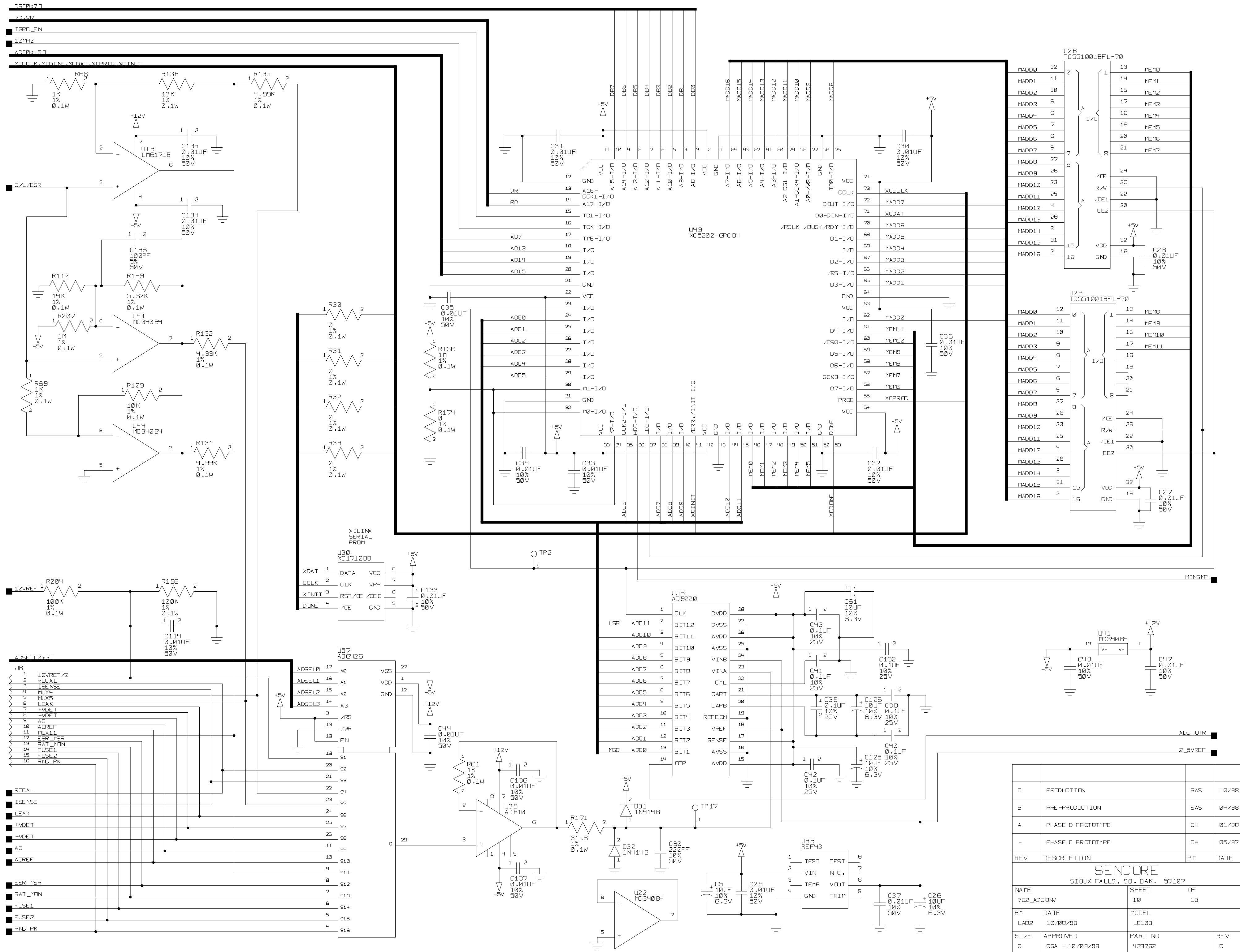
REV	DESCRIPTION	BY	DATE
C	PRODUCTION	SAS	10/98
B	PRE-PRODUCTION	SAS	04/98
A	PHASE D PROTOTYPE	CH	01/98
-	PHASE C PROTOTYPE	CH	05/97
762_LEAKAGE	SENCORE SIOUX FALLS, SO. DAK. 57107		
NAME	SHEET	OF	
762_LEAKAGE	7	13	
BY	DATE	MODEL	
LAB2	10/08/98	LC103	
SIZE	APPROVED	PART NO	REV
C	CSA - 10/09/98	438762	C





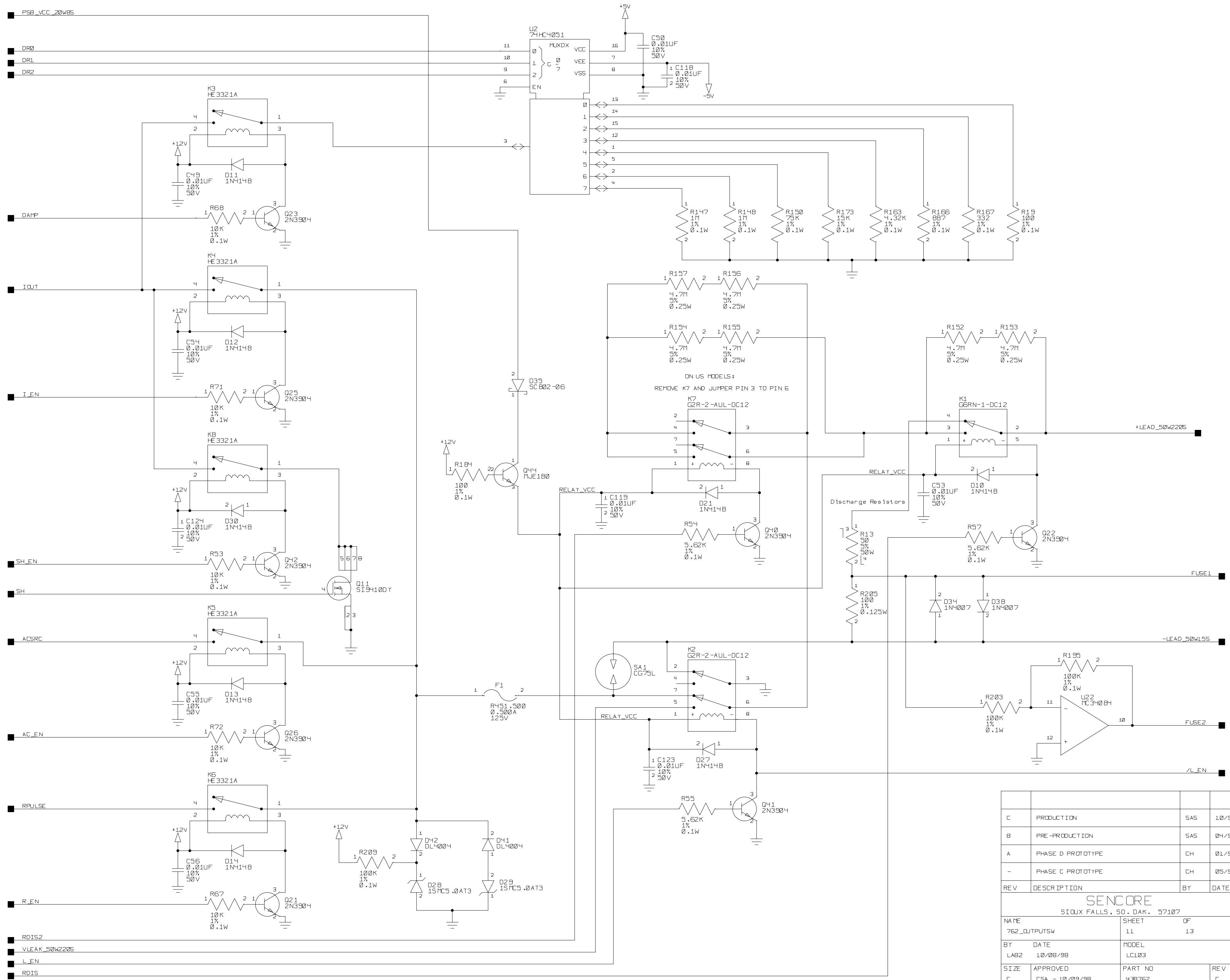
REV	DESCRIPTION	BY	DATE
C	PRODUCTION	SAS	10/98
B	PRE-PRODUCTION	SAS	04/98
A	PHASE D PROTOTYPE	CH	01/98
-	PHASE C PROTOTYPE	CH	05/97

SENCORE			
SIOUX FALLS, SO. DAK. 57107			
NAME	762_RINGER	SHEET	OF
		9	13
BY	DATE	MODEL	
LAB2	10/08/98	LC103	
SIZE	APPROVED	PART NO	REV
C	CSA - 10/09/98	438762	C



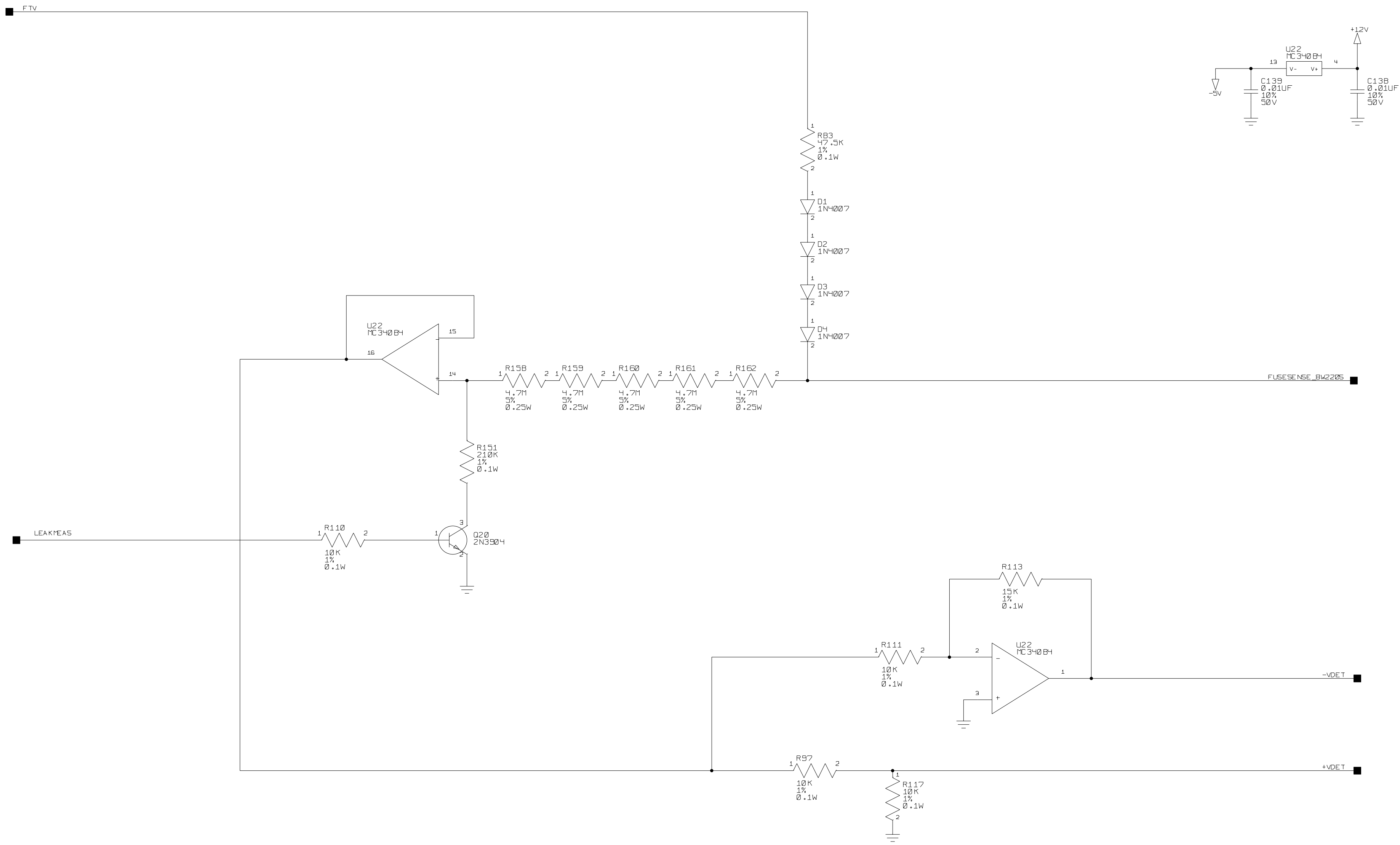
REV	DESCRIPTION	BY	DATE
C	PRODUCTION	SAS	10/98
B	PRE-PRODUCTION	SAS	04/98
A	PHASE D PROTOTYPE	CH	01/98
-	PHASE C PROTOTYPE	CH	05/97

SEN CORE			
SIOUX FALLS, SO. DAK. 57107			
NAME	SHEET	OF	
762_ADCONV	10	13	
BY	DATE	MODEL	
LAB2	10/08/98	LC103	
SIZE	APPROVED	PART NO	REV
C	CSA - 10/09/98	438762	C



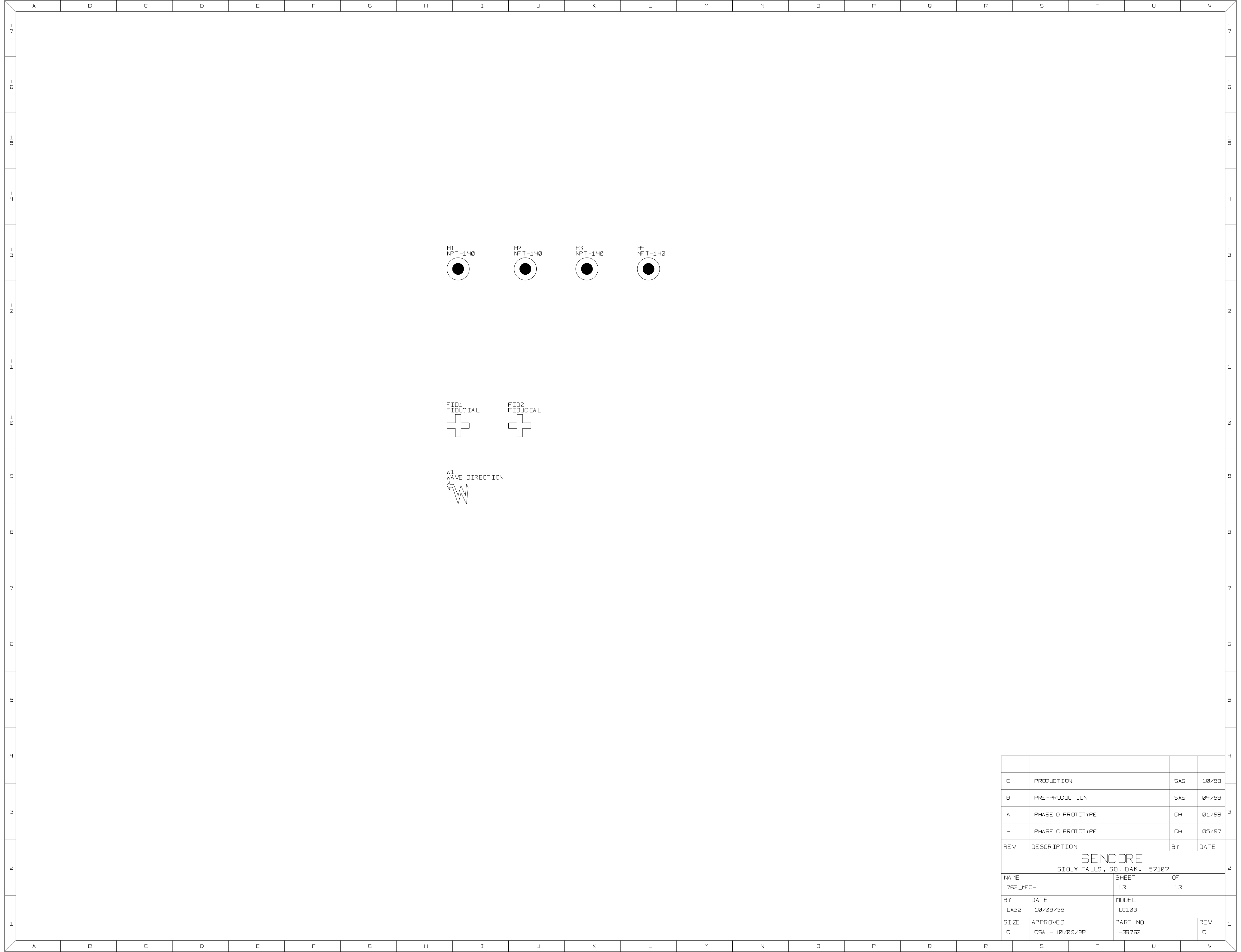
REV	DESCRIPTION	BY	DATE
C	PRODUCTION	SAS	10/98
B	PRE-PRODUCTION	SAS	04/98
A	PHASE D PROTOTYPE	CH	01/98
-	PHASE C PROTOTYPE	CH	05/97

SEN CORE SIOUX FALLS, SO. DAK. 57107			
NAME	762_OUTPUTSW	SHEET	OF
		11	13
BY	DATE	MODEL	
	10/08/98	LC103	
SIZE	APPROVED	PART NO	REV
C	CSA - 10/09/98	438762	C

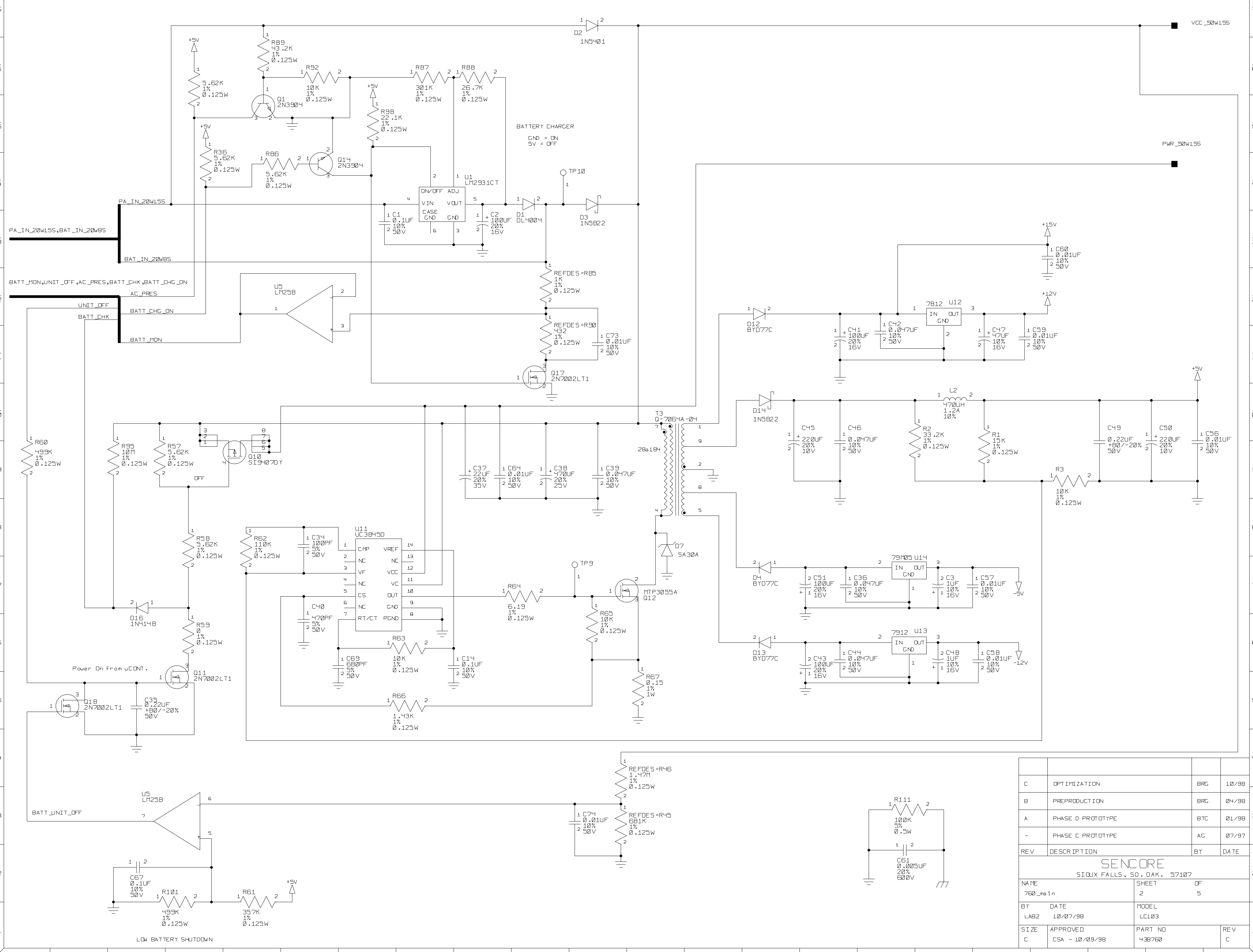


REV	DESCRIPTION	BY	DATE
C	PRODUCTION	SAS	10/98
B	PRE-PRODUCTION	SAS	04/98
A	PHASE D PROTOTYPE	CH	01/98
-	PHASE C PROTOTYPE	CH	05/97

SENCORE			
SIOUX FALLS, SO. DAK. 57107			
NAME	762_FUSEDET	SHEET	OF
		12	13
BY	DATE	MODEL	
LAB2	10/08/98	LC103	
SIZE	APPROVED	PART NO	REV
C	CSA - 10/09/98	438762	C

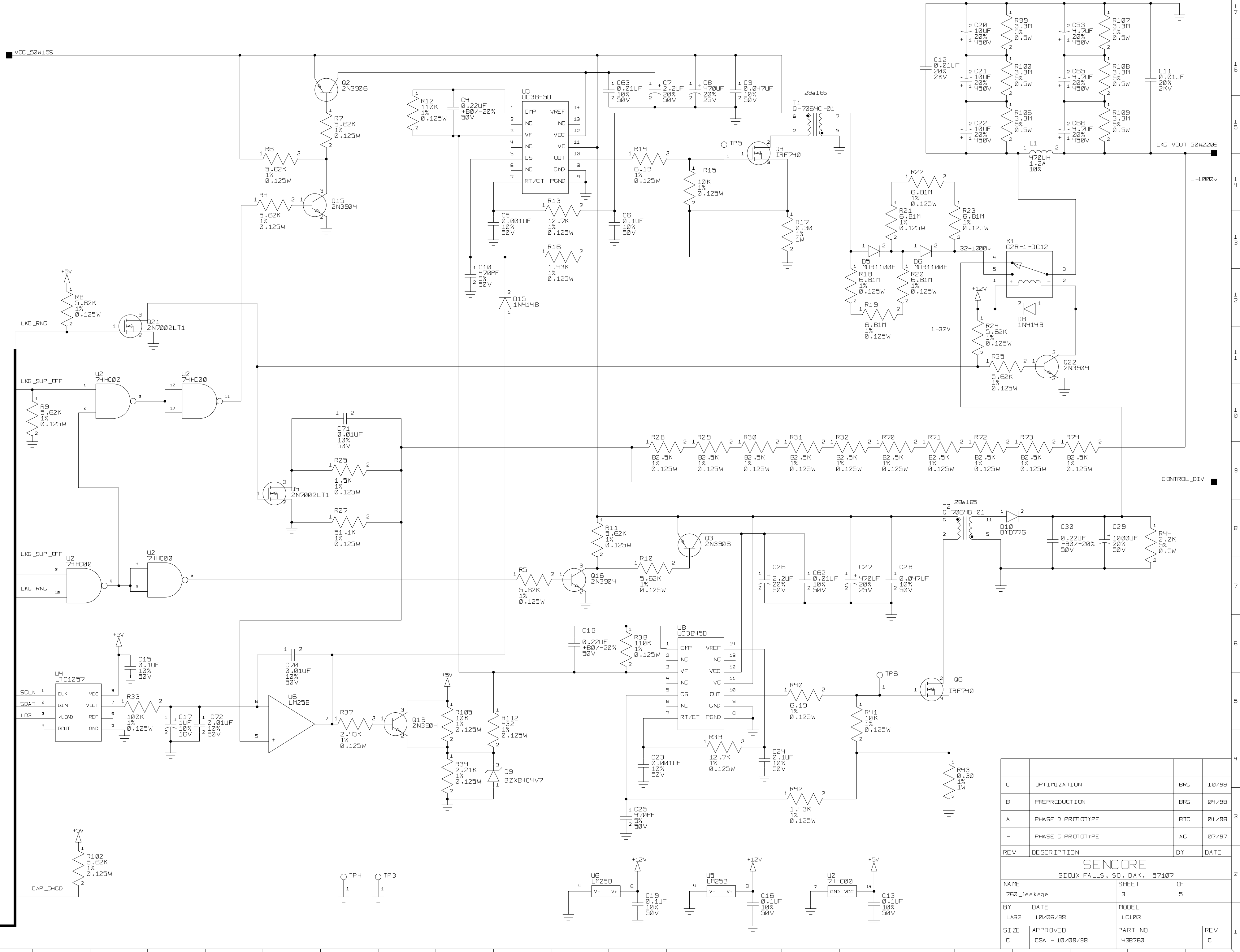


C	PRODUCTION	SAS	10/98
B	PRE-PRODUCTION	SAS	04/98
A	PHASE D PROTOTYPE	CH	01/98
-	PHASE C PROTOTYPE	CH	05/97
REV	DESCRIPTION	BY	DATE
SEN CORE SIOUX FALLS, SO. DAK. 57107			
NAME	762_MECH	SHEET	OF
		13	13
BY	DATE	MODEL	
LAB2	10/08/98	LC103	
SIZE	APPROVED	PART NO	REV
C	CSA - 10/09/98	438762	C



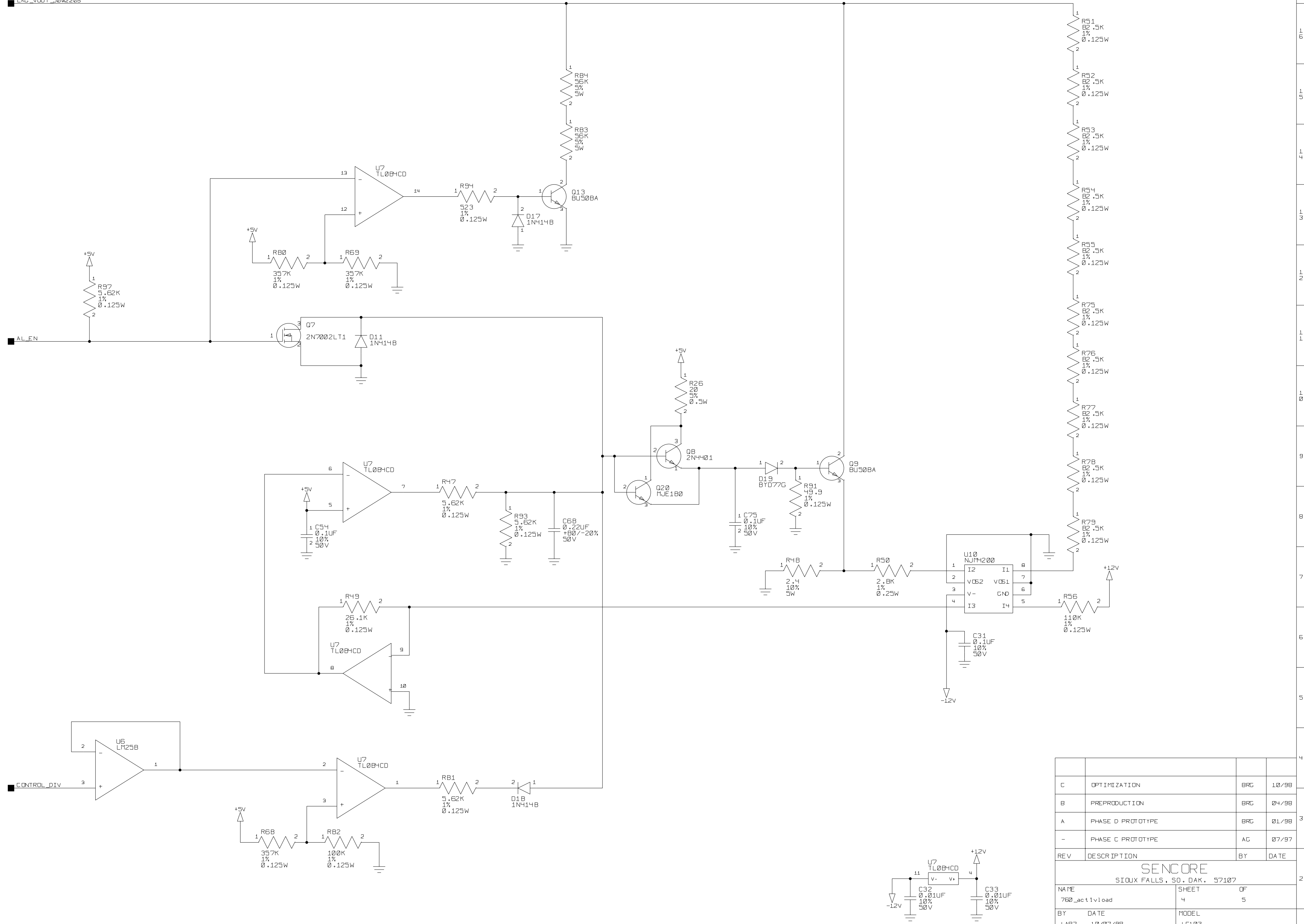
REV	DESCRIPTION	BY	DATE
C	OPTIMIZATION	BRC	10/98
B	PREPRODUCTION	BRC	04/98
A	PHASE D PROTOTYPE	BTC	01/98
-	PHASE C PROTOTYPE	AG	07/97

SENCORE			
SIOUX FALLS, SO. DAK. 57107			
NAME	SHEET	OF	
760_melr	2	5	
BY	DATE	MODEL	
LAB2	10/07/98	LC103	
SIZE	APPROVED	PART NO	REV
C	CSA - 10/09/98	438760	C



REV	DESCRIPTION	BY	DATE
C	OPTIMIZATION	BRC	10/98
B	PREPRODUCTION	BRC	04/98
A	PHASE D PROTOTYPE	BTC	01/98
-	PHASE C PROTOTYPE	AG	07/97

SENCORE			
SIOUX FALLS, SO. DAK. 57107			
NAME	SHEET	OF	
760_leakage	3	5	
BY	DATE	MODEL	
LAB2	10/06/98	LC103	
SIZE	APPROVED	PART NO	REV
C	CSA - 10/09/98	438760	C



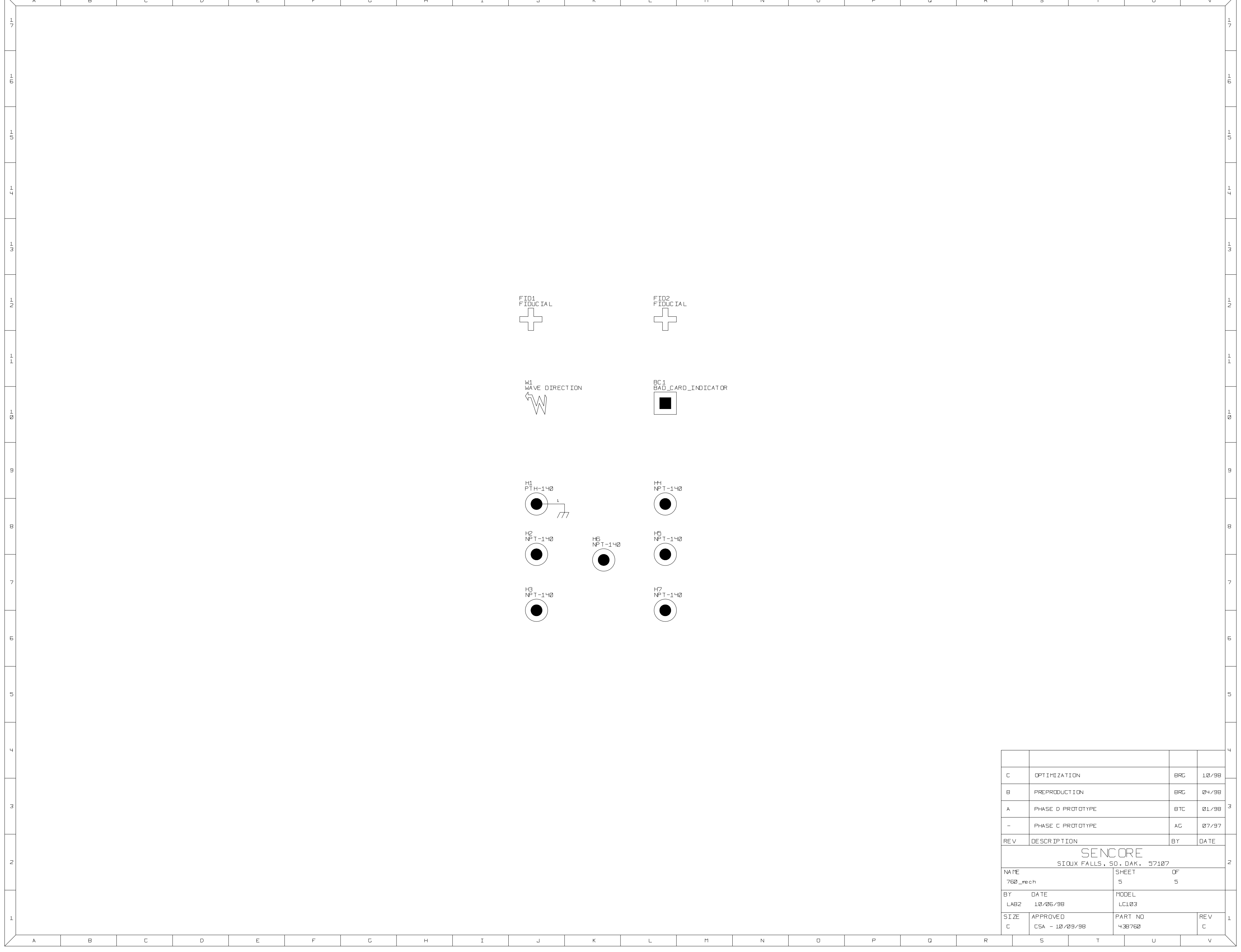
REV	DESCRIPTION	BY	DATE
C	OPTIMIZATION	BRC	10/98
B	PREPRODUCTION	BRC	04/98
A	PHASE D PROTOTYPE	BRC	01/98
-	PHASE C PROTOTYPE	AG	07/97

SENCORE
SIOUX FALLS, SO. DAK. 57107

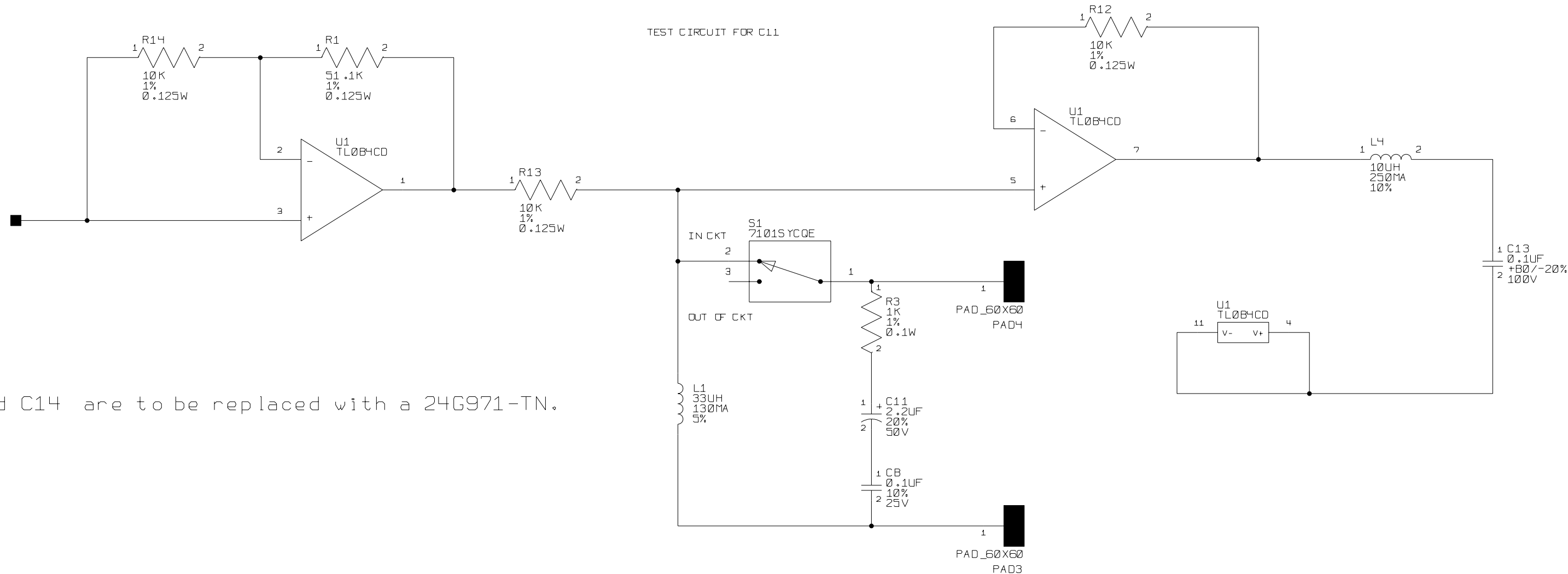
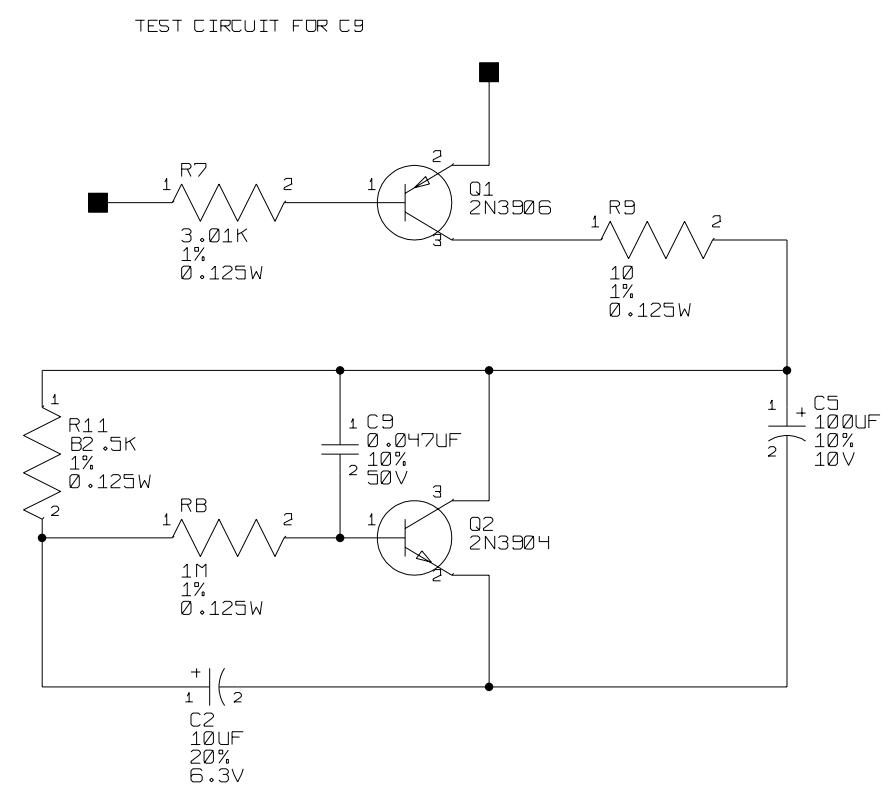
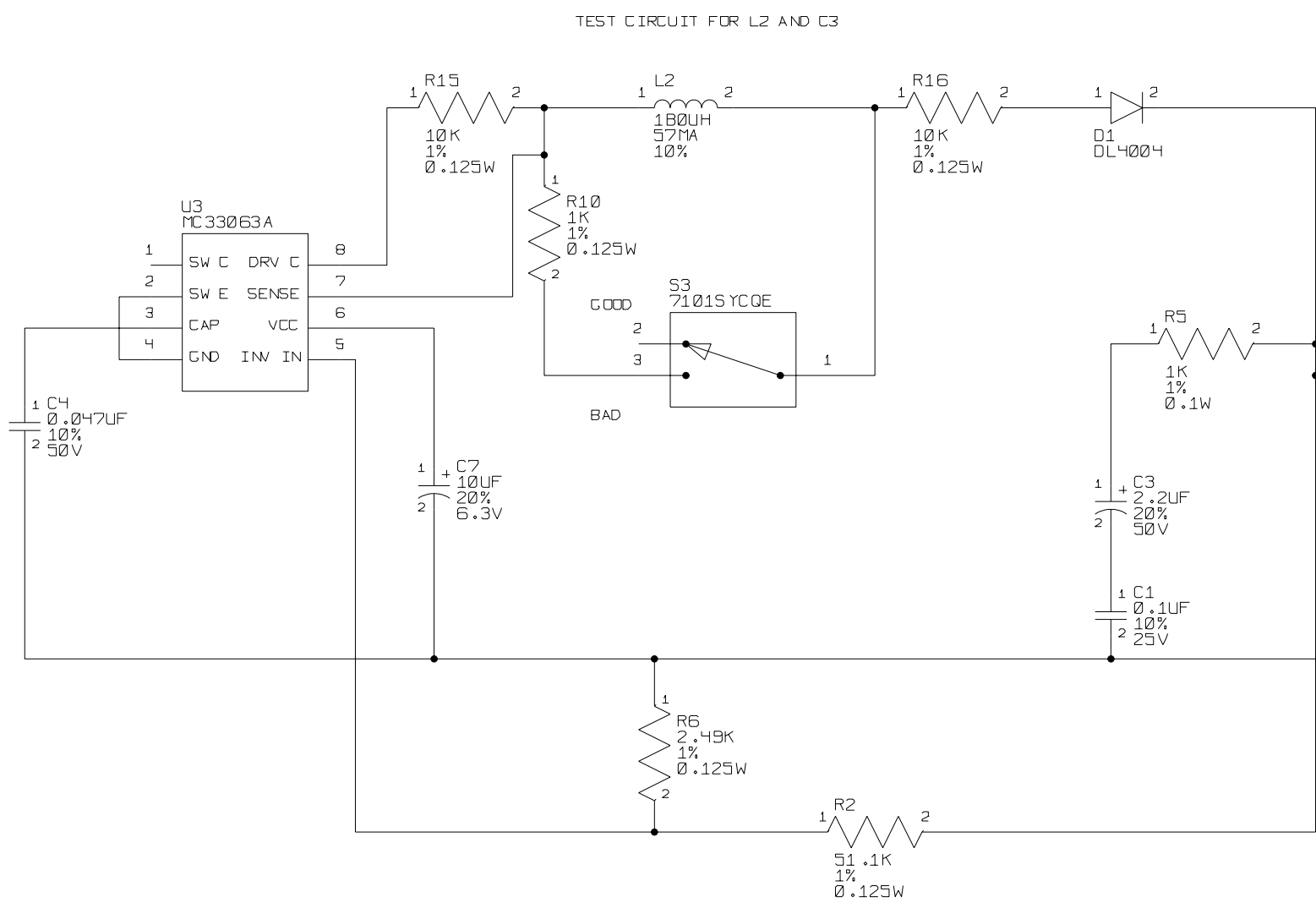
NAME	760_act1vload	SHEET	4	OF	5
BY	LAB2	DATE	10/07/98	MODEL	LC103
SIZE	C	APPROVED	CSA - 10/09/98	PART NO	438760
				REV	C

1 7
1 6
1 5
1 4
1 3
1 2
1 1
1 0
9
8
7
6
5
4
3
2
1

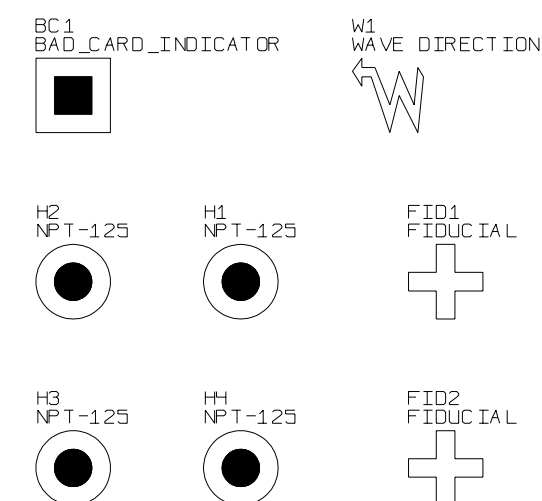
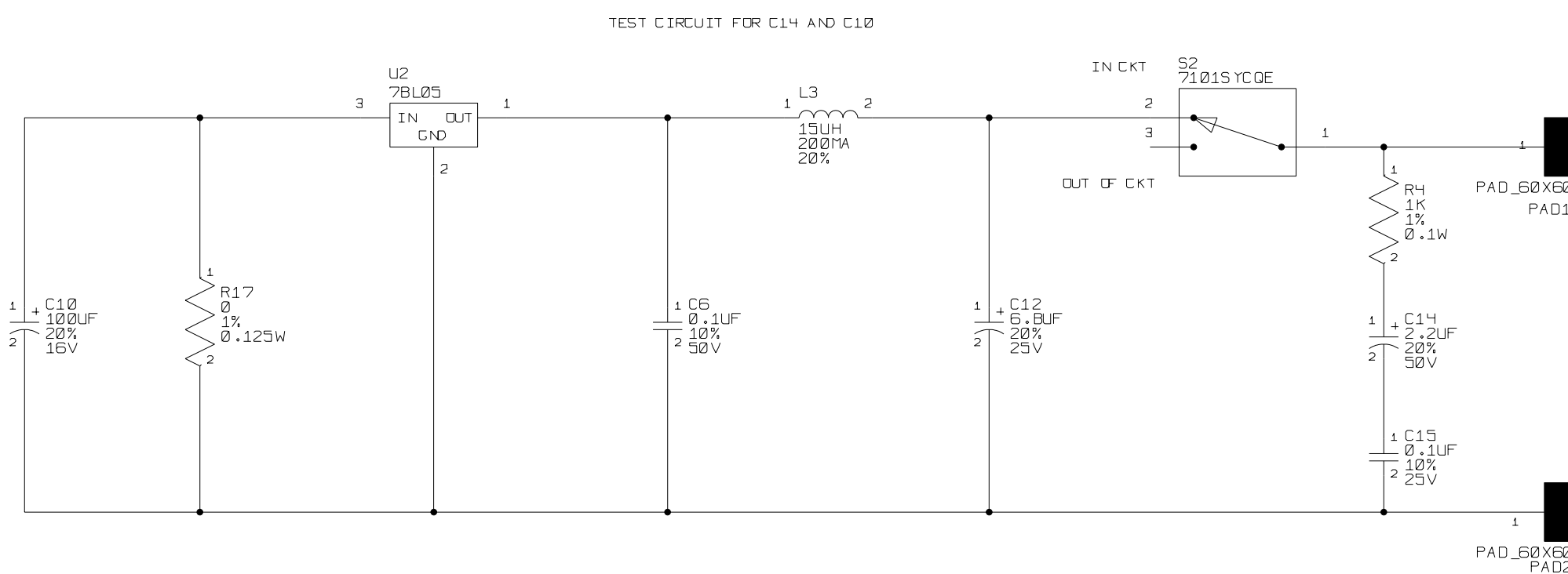
A B C D E F G H I J K L M N O P Q R S T U V



C	OPTIMIZATION	BRG	10/98
B	PREPRODUCTION	BRG	04/98
A	PHASE D PROTOTYPE	BTC	01/98
-	PHASE C PROTOTYPE	AC	07/97
REV	DESCRIPTION	BY	DATE
SENCORE SIOUX FALLS, SO. DAK. 57107			
NAME	760_mech	SHEET	OF
BY	LAB2	DATE	10/06/98
SIZE	C	MODEL	LC103
APPROVED	CSA - 10/09/98	PART NO	438760
		REV	C



NOTE: C3, C11, and C14 are to be replaced with a 24G971-TN.

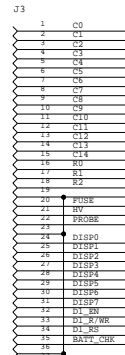


REV	DESCRIPTION	BY	DATE
A	PRE-PRODUCTION	BTC	12/98
-	FIRST PROTOTYPE	BTC	03/98

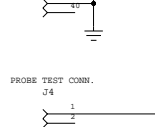
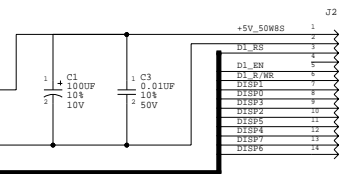
SEN CORE			
SIOUX FALLS, SO. DAK. 57107			
NAME	SHEET	OF	
DEMO	1	1	
BY	DATE	MODEL	
	12/04/98	LC103	
SIZE	APPROVED	PART NO	REV
C	CSA - 12/16/98	438790	A



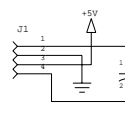
CONTROL LINES FROM MAIN BOARD



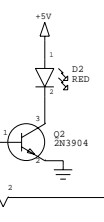
POWER AND DATA TO DISPLAY



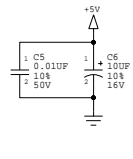
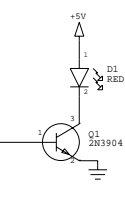
DISPLAY PWR FROM PSB



FAULT WARNING



HIGH VOLTAGE WARNING



REV	DESCRIPTION	BY	DATE
A	PRE-PRODUCTION	BTC	2/98
-	PHASE D PROTOTYPE	BTC	1/98
REV	DESCRIPTION	BY	DATE

SENCORE
SIOUX FALLS, SO. DAK. 57107

NAME	FRONT PANEL	SHEET	OF
		1	1

BY	DATE	MODEL
LAB2	02/16/98	LC103

SIZE	APPROVED	PART NO	REV
C	CSA - 03/10/98	438761	A