

# SCHEMATIC AND PARTS LIST SENCORE TF26

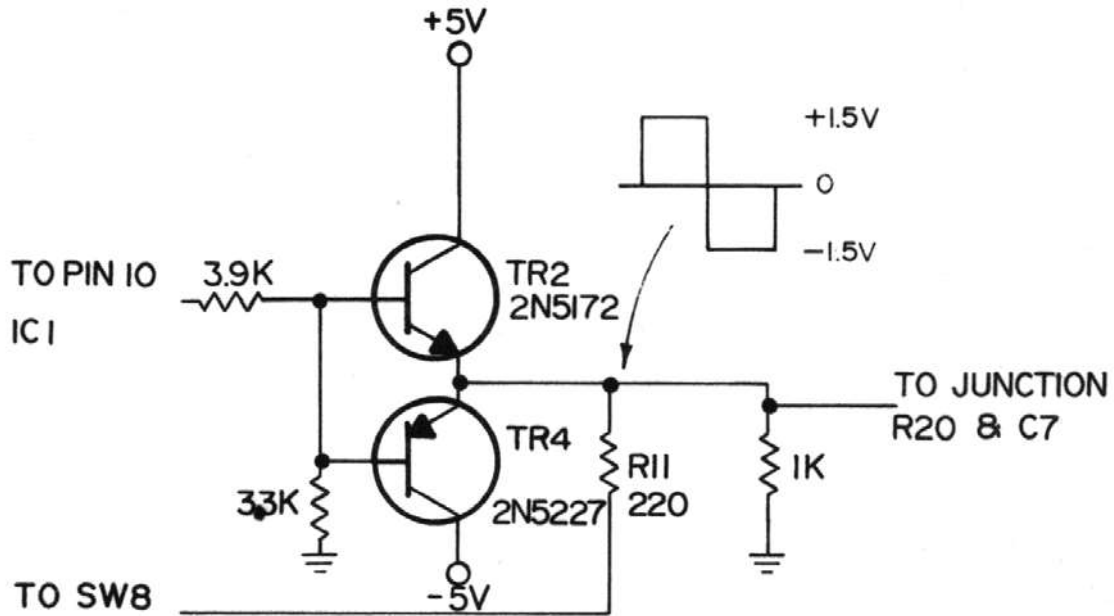


**SENCORE**

3200 SENCORE DRIVE, SIOUX FALLS, SOUTH DAKOTA 57107

## TF26 SCHEMATIC ADDENDUM

The circuit for the TF26 Touch Tone Cricket has been revised to yield a more precise square wave output from the oscillator. TR2, R11, R12, R13, R14, and R15 have been replaced with the components shown in the schematic below. This partial schematic is to replace the section of Form 860 that includes the parts listed.



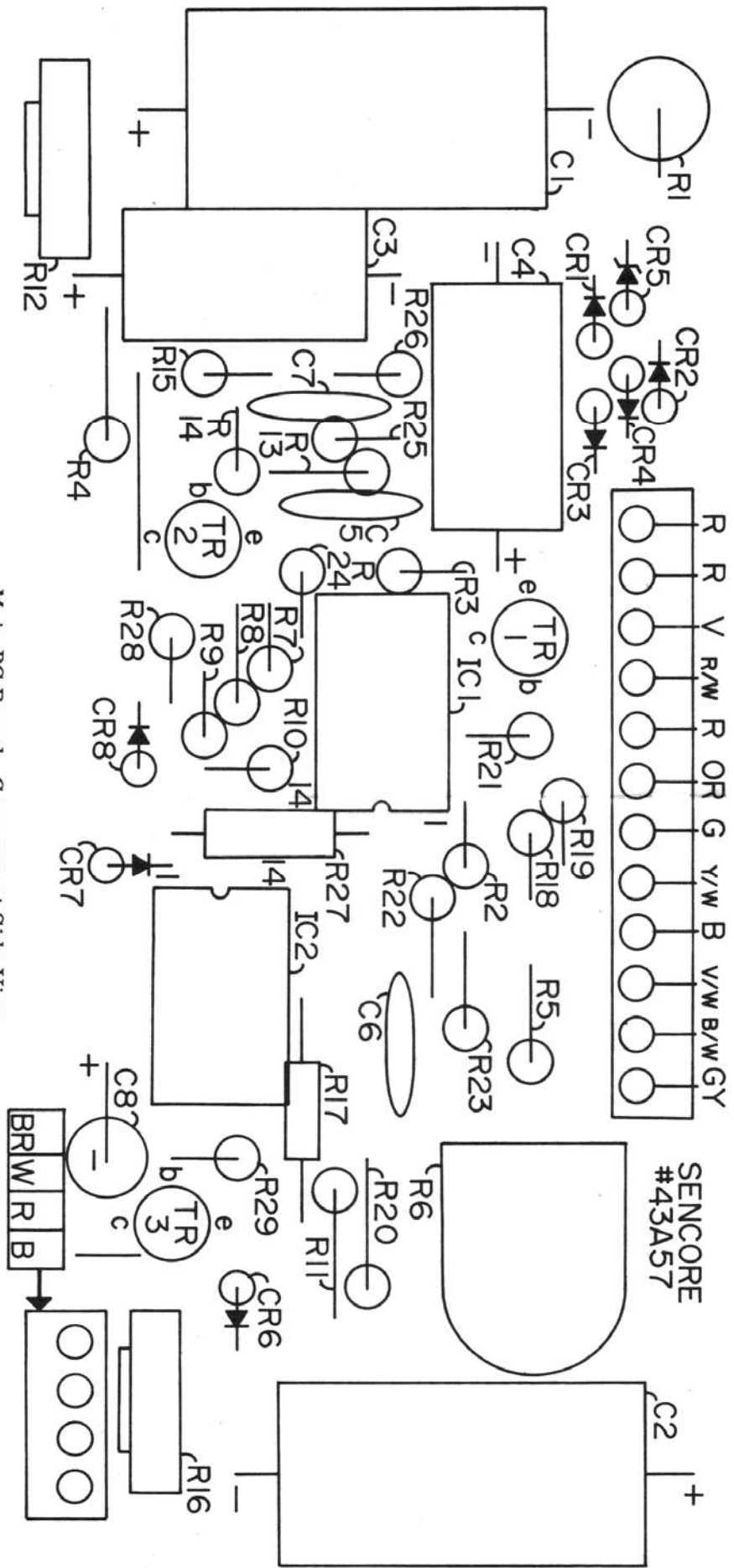
# TF26 PARTS LIST

| SCHEMATIC<br>REF. NO.        | PART NO. | DESCRIPTION                          | PRICE |
|------------------------------|----------|--------------------------------------|-------|
| CR1,2,3,4<br>6,7,8,<br>CR5,9 | 50C5-2   | Diode, 1N4148                        | .25   |
|                              | 50C4-13  | Diode, Zener, 5.1v, 5% 1w            | .50   |
| IC1                          | 69G9     | I.C. LM3900, Quad Op Amp             | 2.50  |
| IC2                          | 69G10    | I.C. SN7400, Quad AND I.C.           | 1.25  |
| J1                           | 26G185   | Socket                               | 1.25  |
| LS1                          | 48G2     | Speaker, 2"                          | 7.25  |
| M1                           | 23C49-A  | Meter, 100uA, 1900 Ohms              | 20.00 |
| SW1-6                        | 25A186   | Switch, Pushbutton 4P2P              | 3.25  |
| SW7                          | 25G187   | Switch, Slide 3P2P                   | 1.00  |
| SW8                          | 25G185   | Switch, Slide 4P2P                   | 1.25  |
| SW9                          | 25G3     | Switch, Slide 2P2P                   | .50   |
| T1                           | 28B56    | Transformer                          | 3.50  |
| TR2,3                        | 19A4-1   | Transistor, 2N5172                   | .50   |
|                              | 110C293  | Case Wrap Riveted Assy.              | 5.50  |
|                              | 110B294  | Meter Door Riveted Assy.             | 1.50  |
|                              | 110A295  | Lead Storage Door<br>Rivet Assy.     | 1.50  |
|                              | 108B84   | Front Panel Riveted Assy.            | 10.00 |
|                              | 8B84-C   | Front Panel                          | 2.50  |
|                              | 139G70   | Test Lead Assembly.                  | 7.50  |
|                              | 68G12R   | Probe EZ Hook,<br>Red w/Gray Lead    | 2.25  |
|                              | 68G12Y   | Probe EZ Hook,<br>Yellow w/Gray Lead | 2.25  |
|                              | 68G12G   | Probe EZ Hook,<br>Green w/Gray Lead  | 2.25  |

|          |   |       |
|----------|---|-------|
| 143A57   | Main P.C. Board Assy.                   | 27.25 |
| 143A58-1 | Pushbutton P.C. Board Assy.<br>(Top)    | 7.75  |
| 143A58-2 | Pushbutton P.C. Board Assy.<br>(Bottom) | 7.75  |
| 110B296  | Case Bottom Assembly                    | 4.50  |
| 21A44    | Glamour Cap, Slide Switch               | .25   |
| 21A58    | Pushbutton                              | .25   |

Prices in effect at date of printing and are subject to change without notice.

When ordering parts, please specify model number, part number and description. Service and parts invoices are C.O.D. Please include remittance (check or money order) with your order to save C.O.D. charges. Minimum billing \$3.00.



Main PC Board - Component Side View

# BOARD LEGENDS

Main PC Board - Foil Side View

