

SENCORE[®]*Means Success In Electronic Servicing***tech**
tips

Old Chipper Check RCA / Sencore Part numbers and Kits 1 – 2 Installation Diagrams

Thomson Chipper Check
Interface Box – CCF002

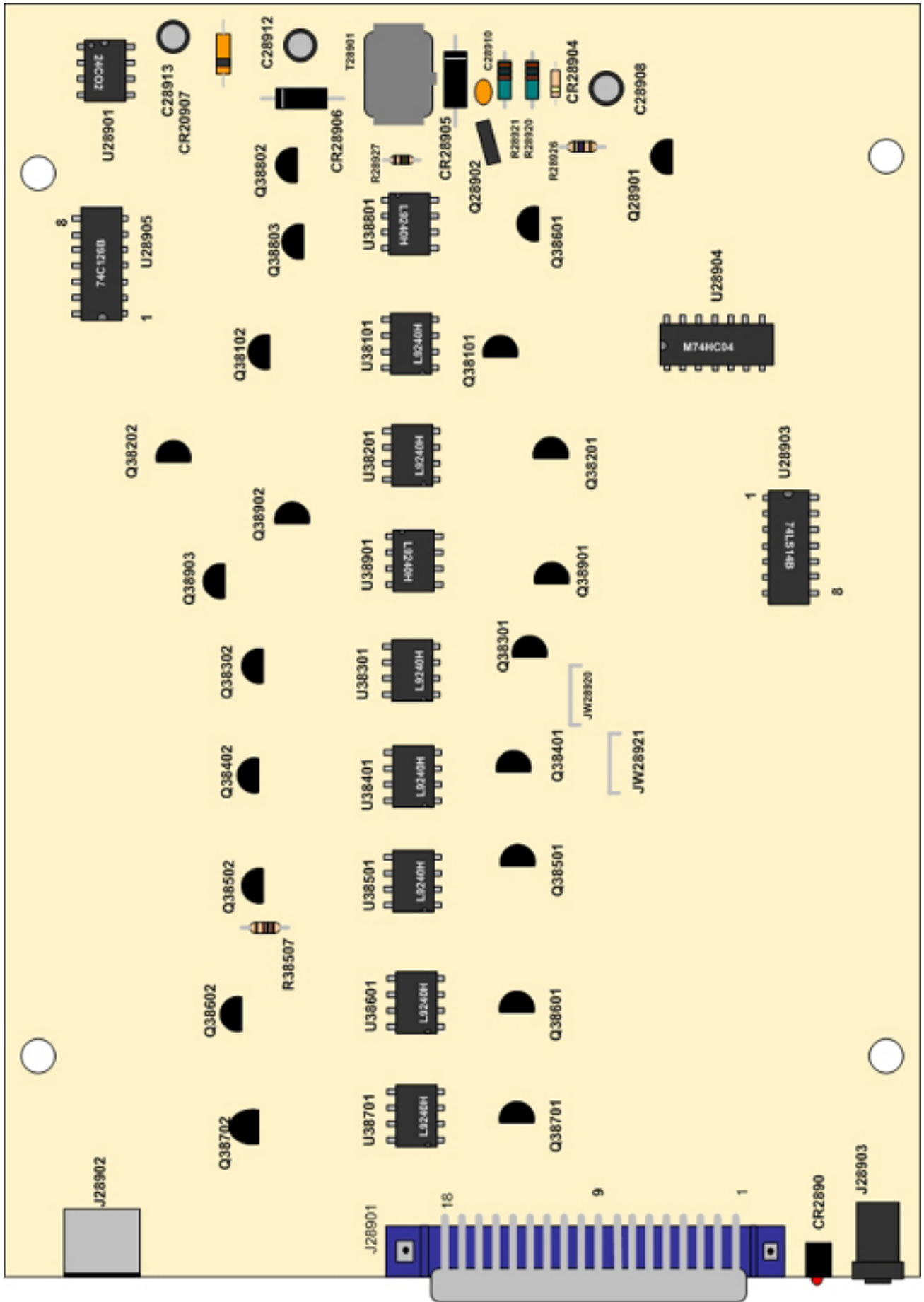


<u>Chipper Check Item</u>	<u>RCA Part #</u>	<u>Sencore Part#</u>
Power Adapter	52325	CCPS1-CS
Parallel Cable	unknown	CCPC1-CS
Serial Cable	212118	CCSC1-CS
Upgrade Kit CC-Kit 1		CC-KIT-1
Upgrade Kit CC-Kit 2		CC-KIT-2

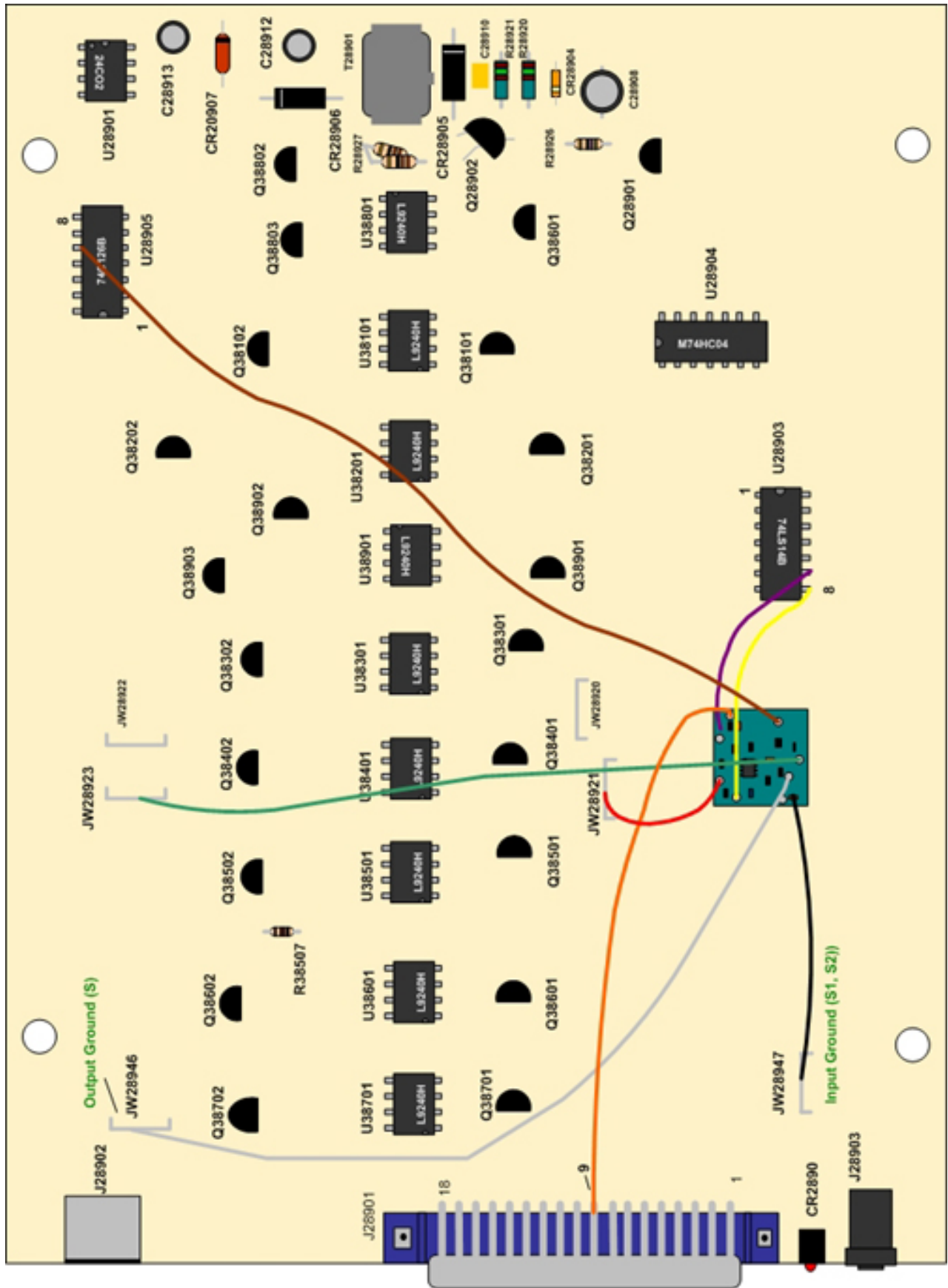
Common Replacement Parts:

D sub. 36 pin connector (J28901)	unknown	26G1366-TM
J28902 Connector Din	unknown	26G1367-TM
IC M24C02 (U28901)	#241915	69G1813-TM
IC Photocoupler (6N136)	#241915	69G1810-TM
DC Input Jack (J28903)	#241916	26G1401-TO
Transformer (T28901)	#207053	28G2125-TM
Transistor MPSW01A (Q28902)	#215497	19G270-TM
Transistor (BC547)	#229220	

Thomson Chipper Check CCF002 Key Components & Circuit Board Points



Thomson Chipper Check CCF002 Key Components & Circuit Board Points (Shows KIT 1 and KIT 2 Modifications)



#CC4

#CC4

For More Information
Call Toll Free 1-800-SENCORE
(1-800-736-2673)

SENCORE

3200 Sencore Drive, Sioux Falls, SD 57107
www.sencore.com

#CC4

#CC4