

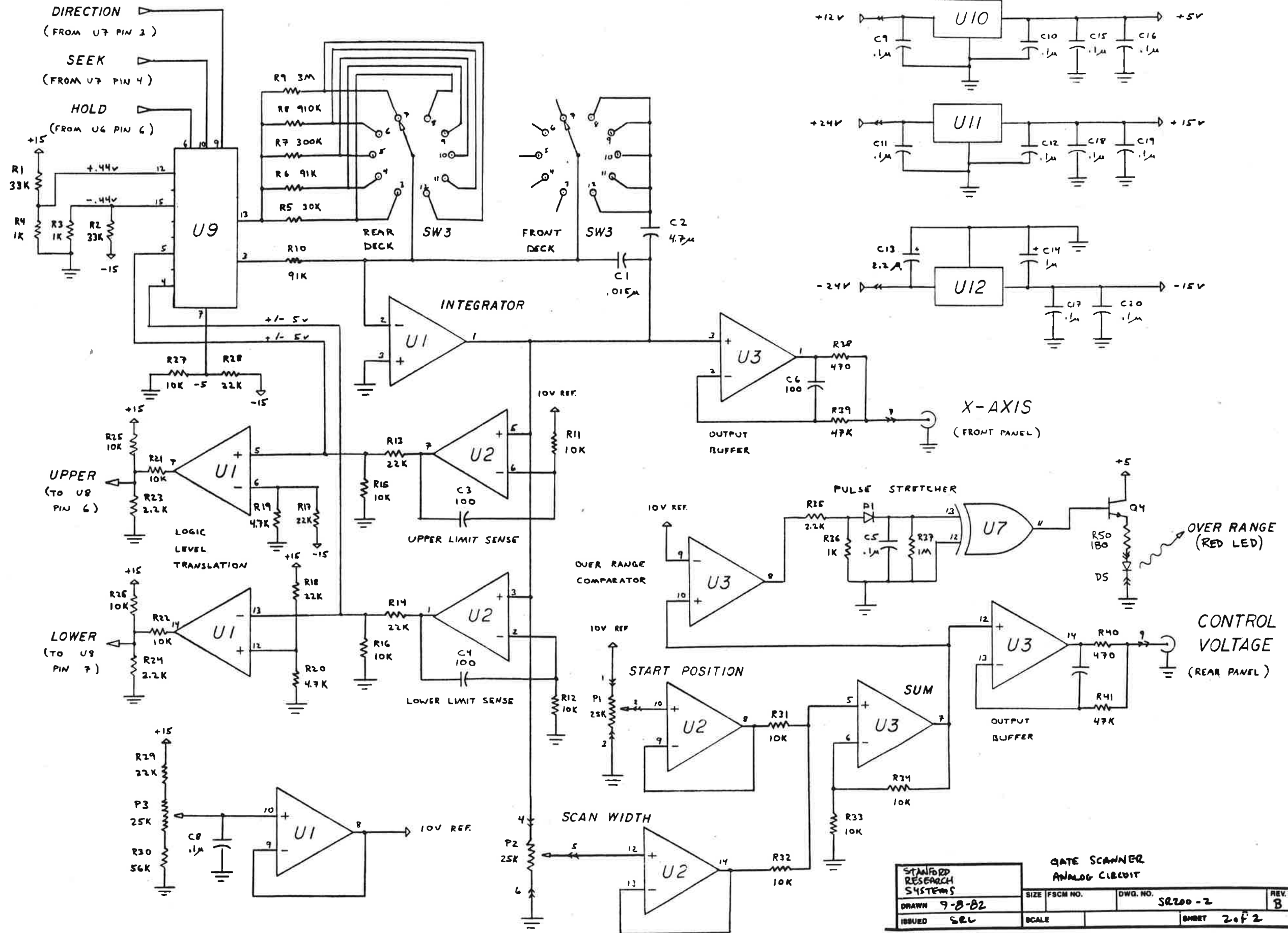
→ INDICATES CONNECTION OFF THE PC BOARD

CIRCUIT ELEMENT	TYPE	GND	+5	+15	-15	# PINS
U1	LF347			4	11	14
U2, U3	LM324			4	11	14
U4, U5	CD4013	7	14			14
U6	CD4025	7	14			14
U7	CD4030	7	14			14
U8	CD4019	8	16			16
U9	CD4052	8	16			16
U10	LM7805					3
U11	LM7815					3
U12	LM7815					3

**GATE SCANNER
DIGITAL CIRCUIT**

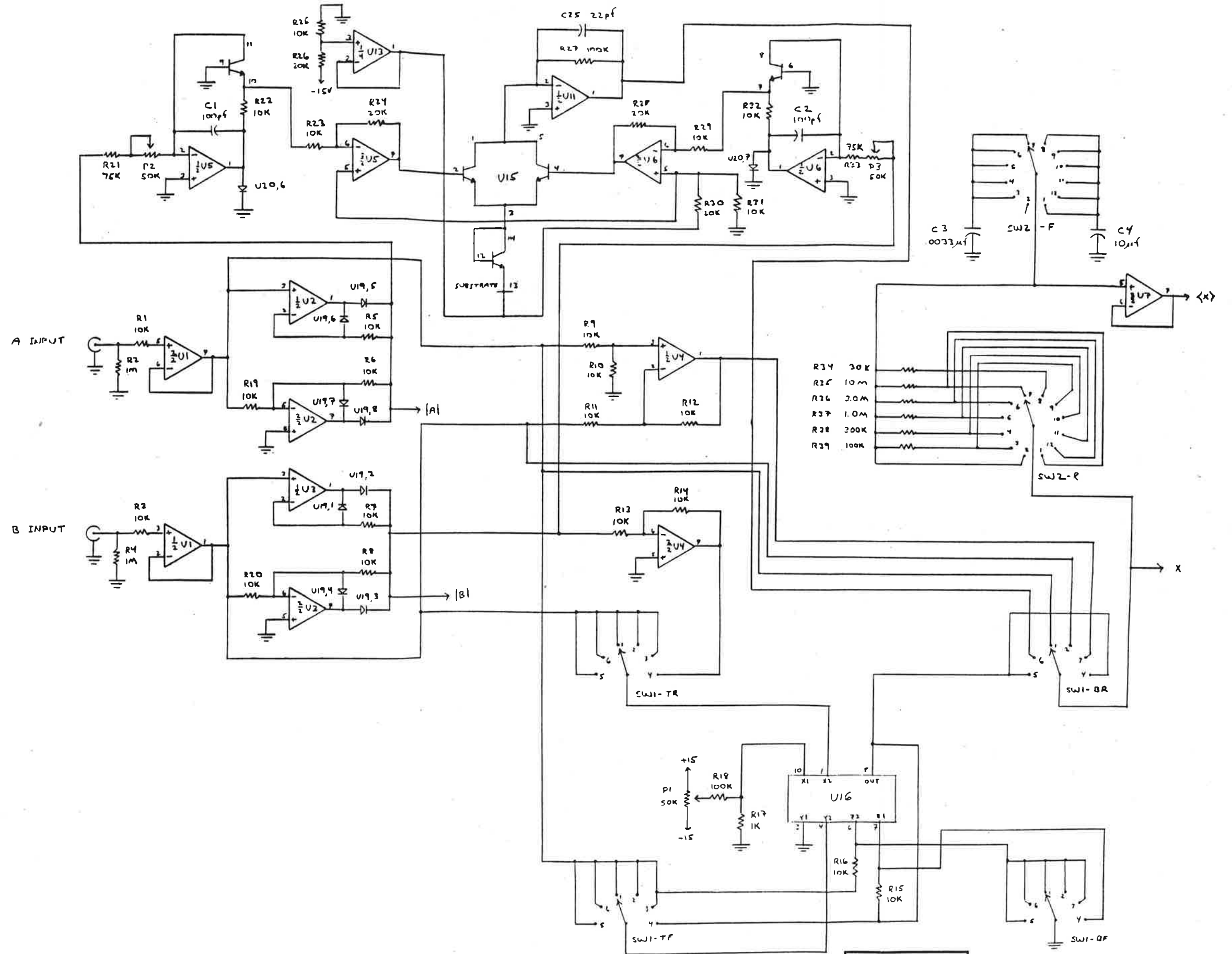
STANFORD RESEARCH SYSTEMS	SIZE	FSCM NO.	DWG. NO.	REV.
DRAWN 9-8-82			SR200-1	B
ISSUED SRL	SCALE		SHEET 1 of 2	

BISHOP GRAPHICS, INC. REORDER NO 1860



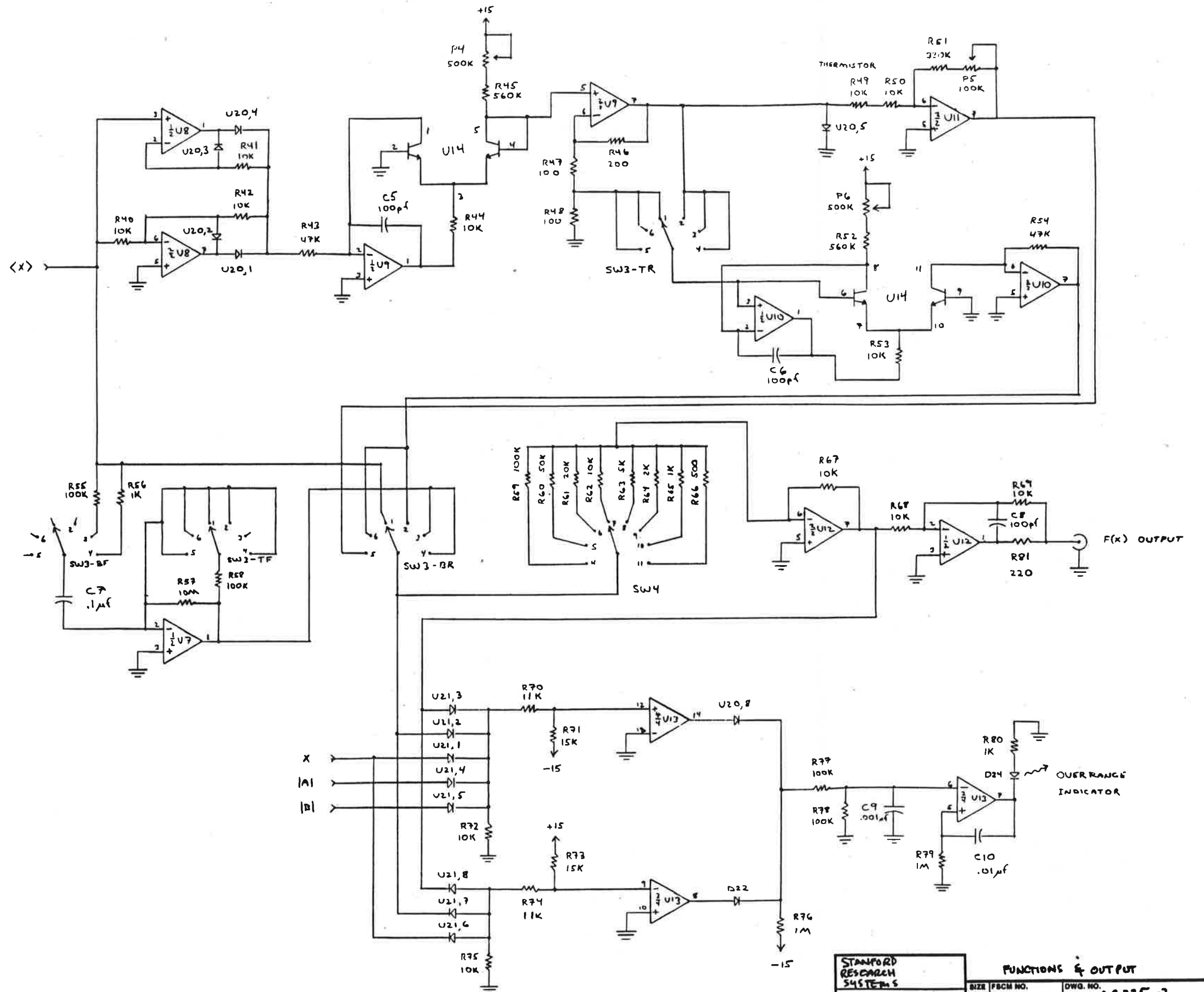
STANFORD RESEARCH SYSTEMS		GATE SCANNER ANALOG CIRCUIT		REV. 8
DRAWN 9-B-B2	SIZE FSCM NO.	DWG. NO. SR200-2		
ISSUED SBL	SCALE	SHEET 2 of 2		

BISHOP GRAPHICS, INC. REORDER NO. 1886

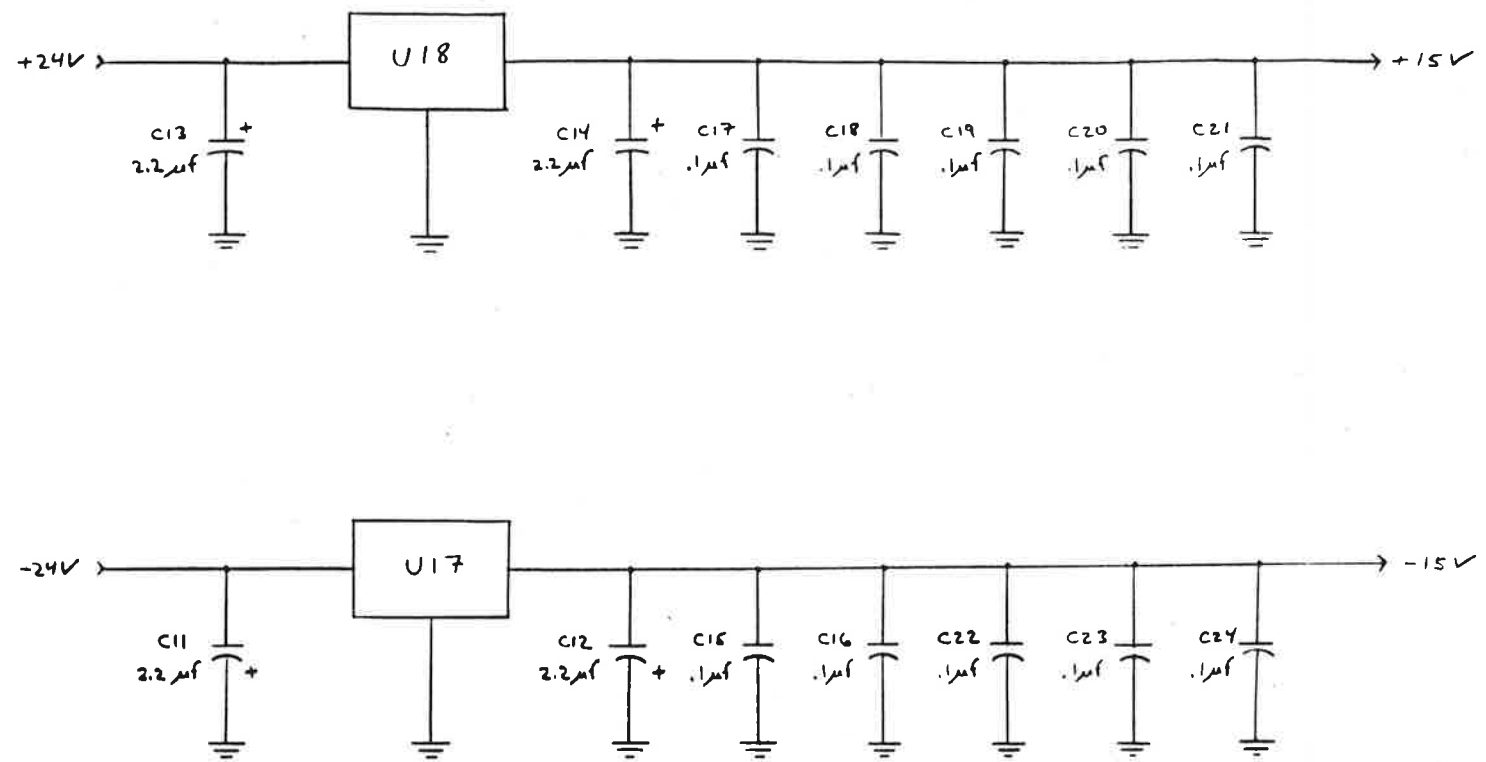


STANDARD RESEARCH SYSTEMS		INPUTS & ARGUMENTS	
DRAWN 6-27-84	SIZE 6-27-84	DWG. NO. SR235-1	REV. B
ISSUED SRL	SCALE	SHEET 1 of 3	

BISHOP GRAPHICS, INC.
WYANDHURST, N.Y. 11791



STANFORD RESEARCH SYSTEMS		FUNCTIONS & OUTPUT	
DRAWN 6-27-84	SIZE FCMB NO.	DWG. NO. SA 235-2	REV. B
ISSUED SBL	SCALE	SHEET 2 OF 3	



SWITCH DESIGNATIONS

SW1 - ARGUMENT SELECTOR
 SW2 - ARGUMENT FILTER
 SW3 - FUNCTION SELECTOR
 SW4 - OUTPUT GAIN

SWITCH ABBREVIATIONS

TF - TOP FRONT GANG
 TR - TOP REAR GANG
 BF - BOTTOM FRONT GANG
 BR - BOTTOM REAR GANG

SW1 POSITIONS

1 - A
 2 - B
 3 - A-B
 4 - 10A/10
 5 - $A \cdot B / 10$
 6 - $\sqrt{A^2 + B^2}$

SW2 POSITIONS

1 - 30 Sec
 2 - OFF
 3 - .3 ms
 4 - 1 ms
 5 - 3 ms
 6 - 10 ms
 7 - 30 ms
 8 - .1 Sec
 9 - .3 Sec
 10 - 1 Sec
 11 - 3 Sec
 12 - 10 Sec

SW3 POSITIONS

1 - X
 2 - X^2
 3 - $-dx/dt$
 4 - $-(dx/dt)/100$
 5 - $\ln(x)$
 6 - $\sqrt{|x|}$

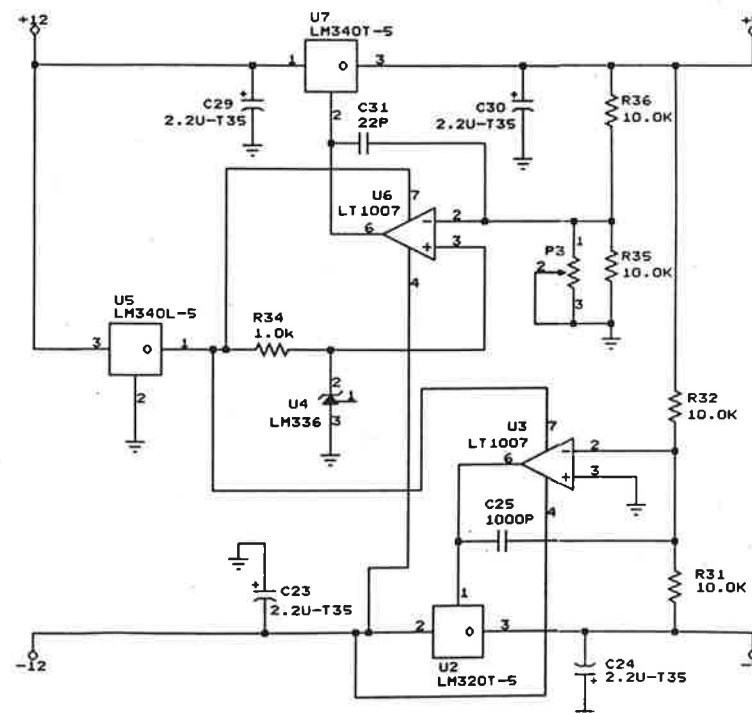
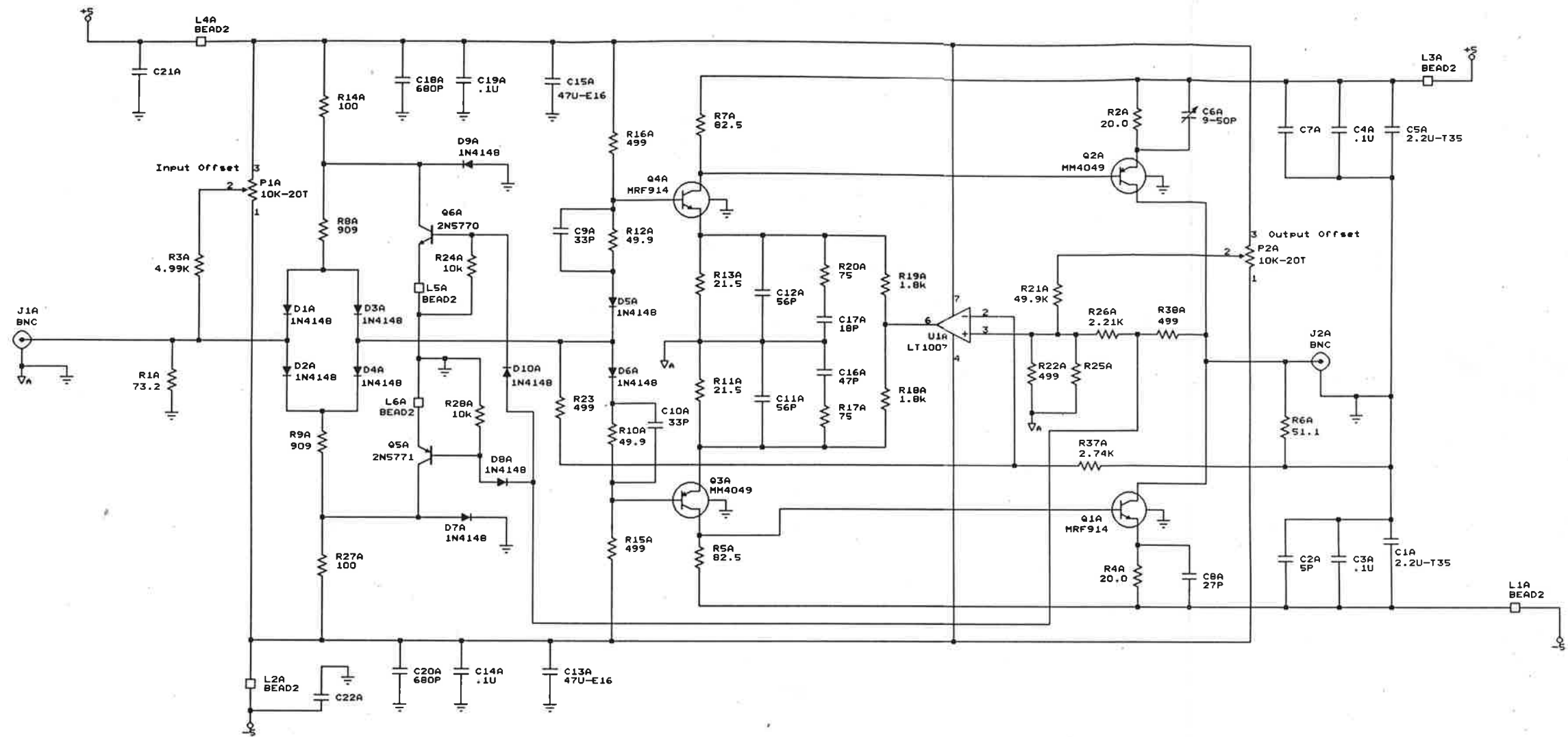
SW4 POSITIONS

4 - .1
 5 - .2
 6 - .5
 7 - 1
 8 - 2
 9 - 5
 10 - 10
 11 - 20

STANFORD RESEARCH SYSTEMS
 REVISED: 6-27-84
 S. LINDGREN
 SHEET 3 OF 3
 SR235 ANALOG PROCESSOR
 VOLTAGE REGULATION

CIRCUIT ELEMENT	TYPE	+15	-15
U1 - U12	LF412	8	4
U13	LF347	4	11
U14	CA3046	-	12, 13, 14
U16	AD534	9	5

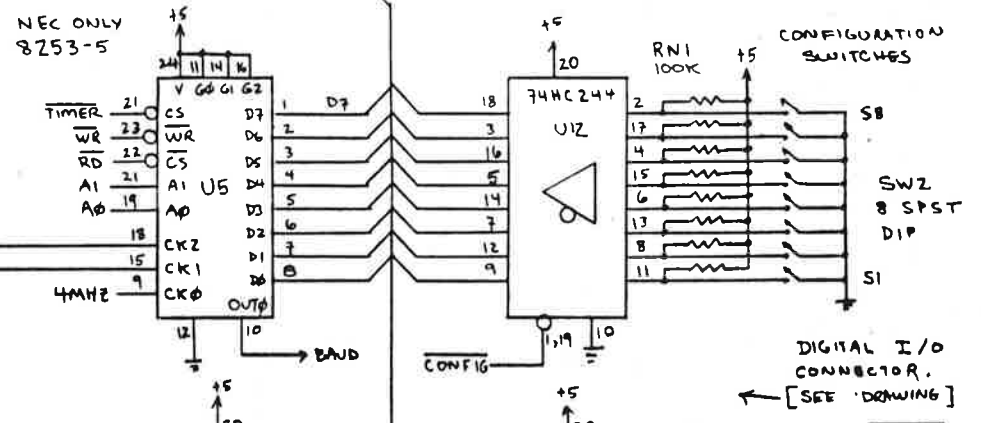
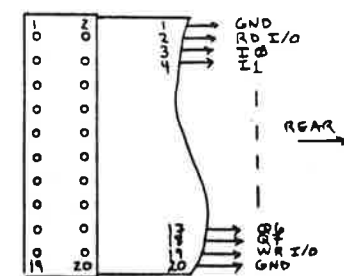
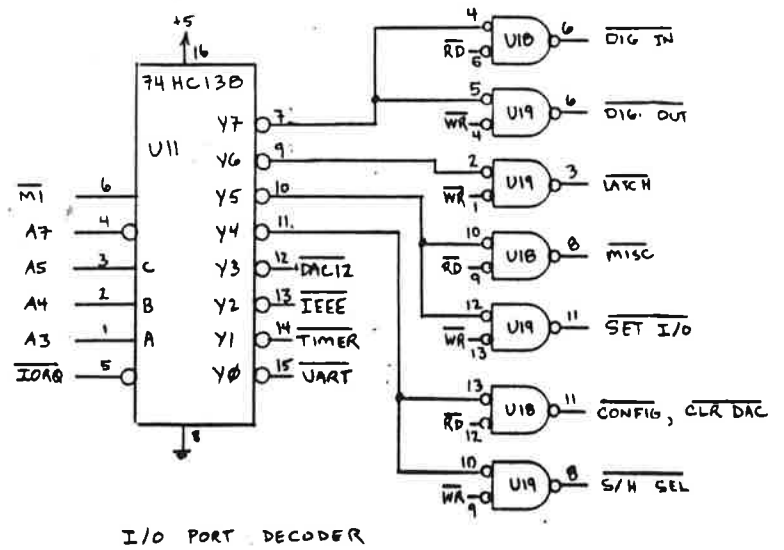
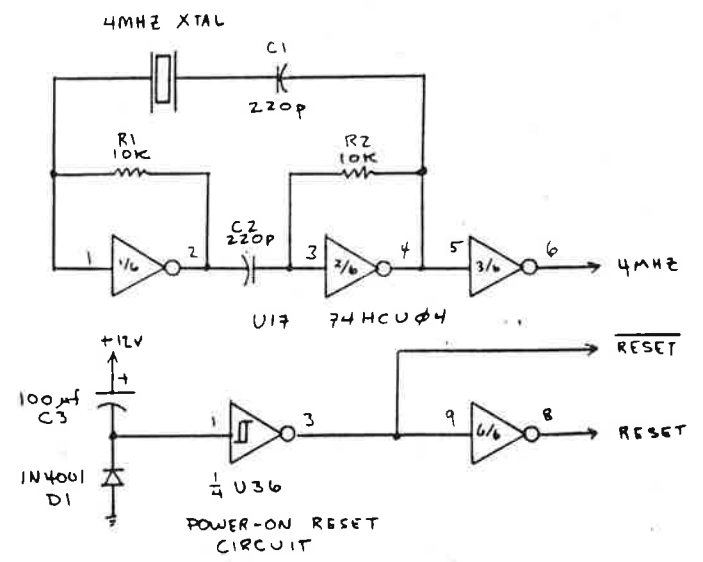
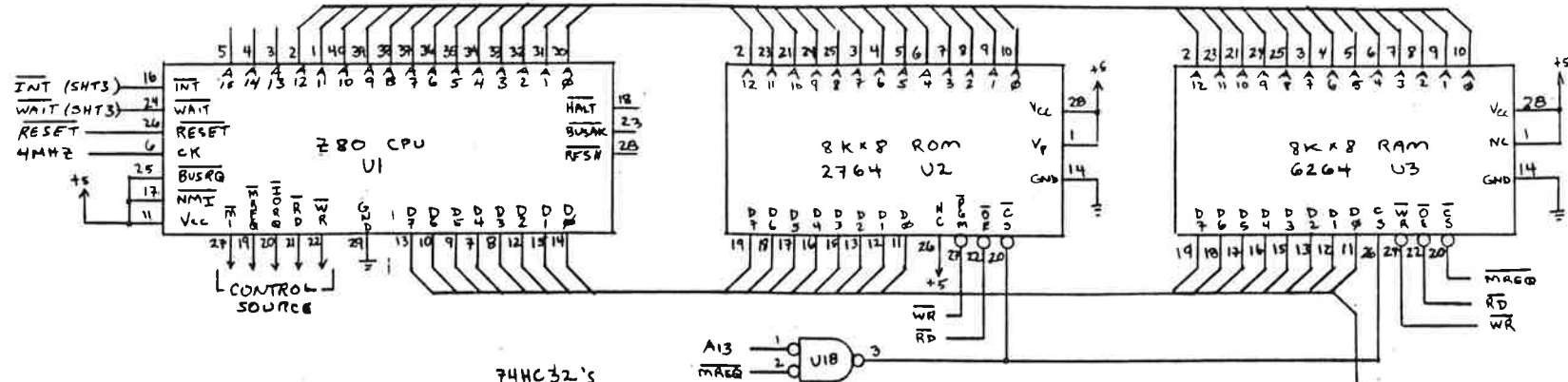
STANFORD RESEARCH SYSTEMS	VOLTAGE REGULATION		
	SIZE	FSCM NO.	DWG. NO. SR235-3
DRAWN 6-27-84	SCALE	SHEET 3 OF 3	REV. B
ISSUED SRL			



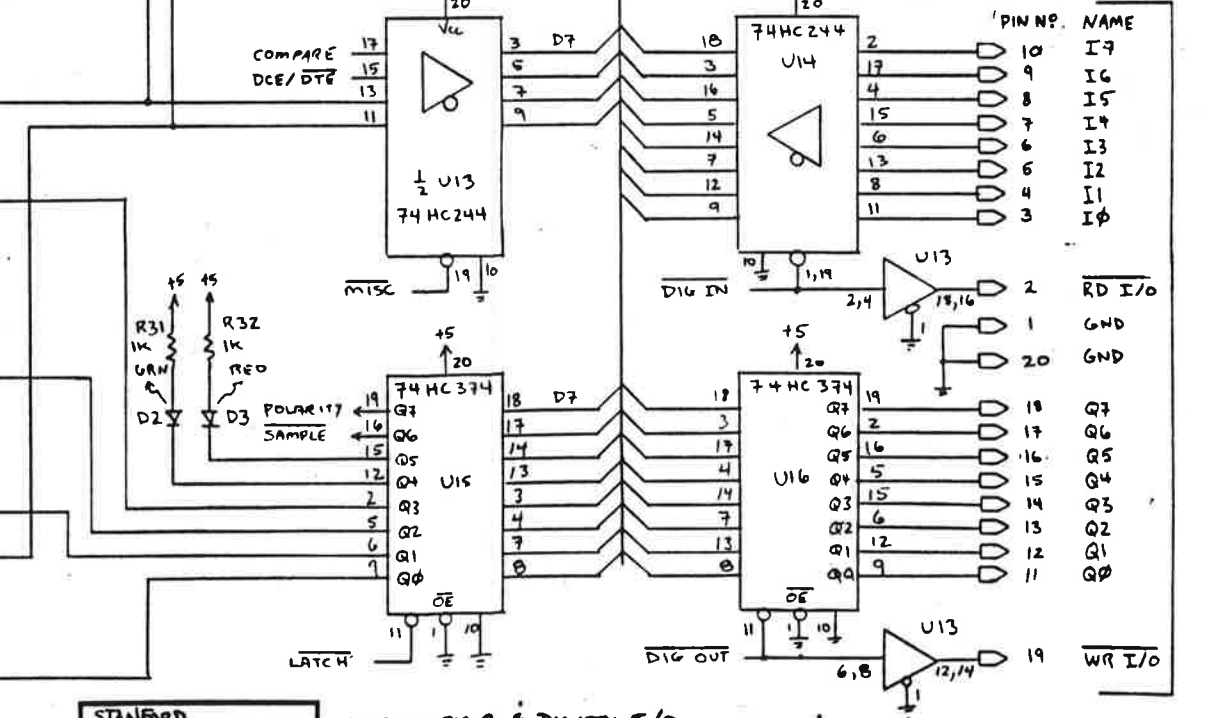
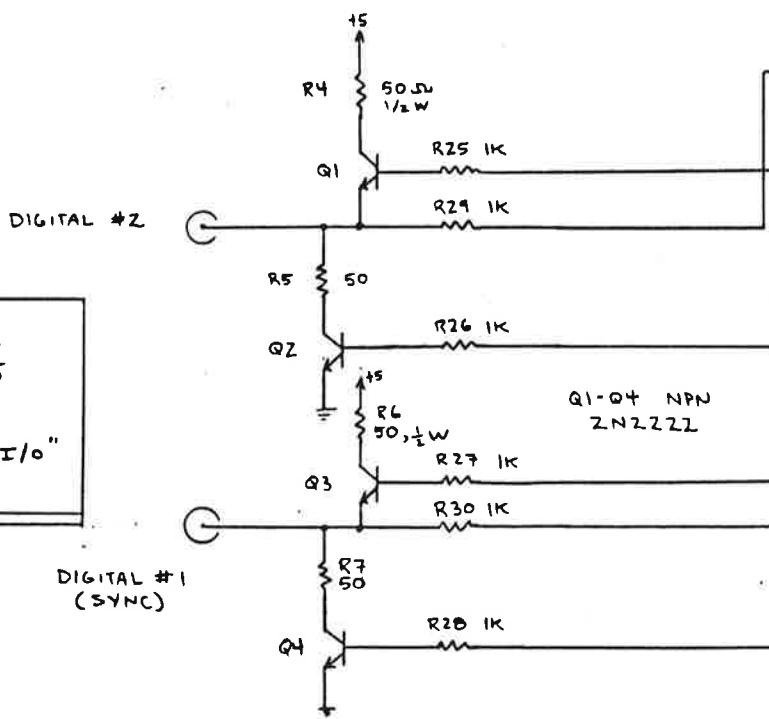
NOTES:

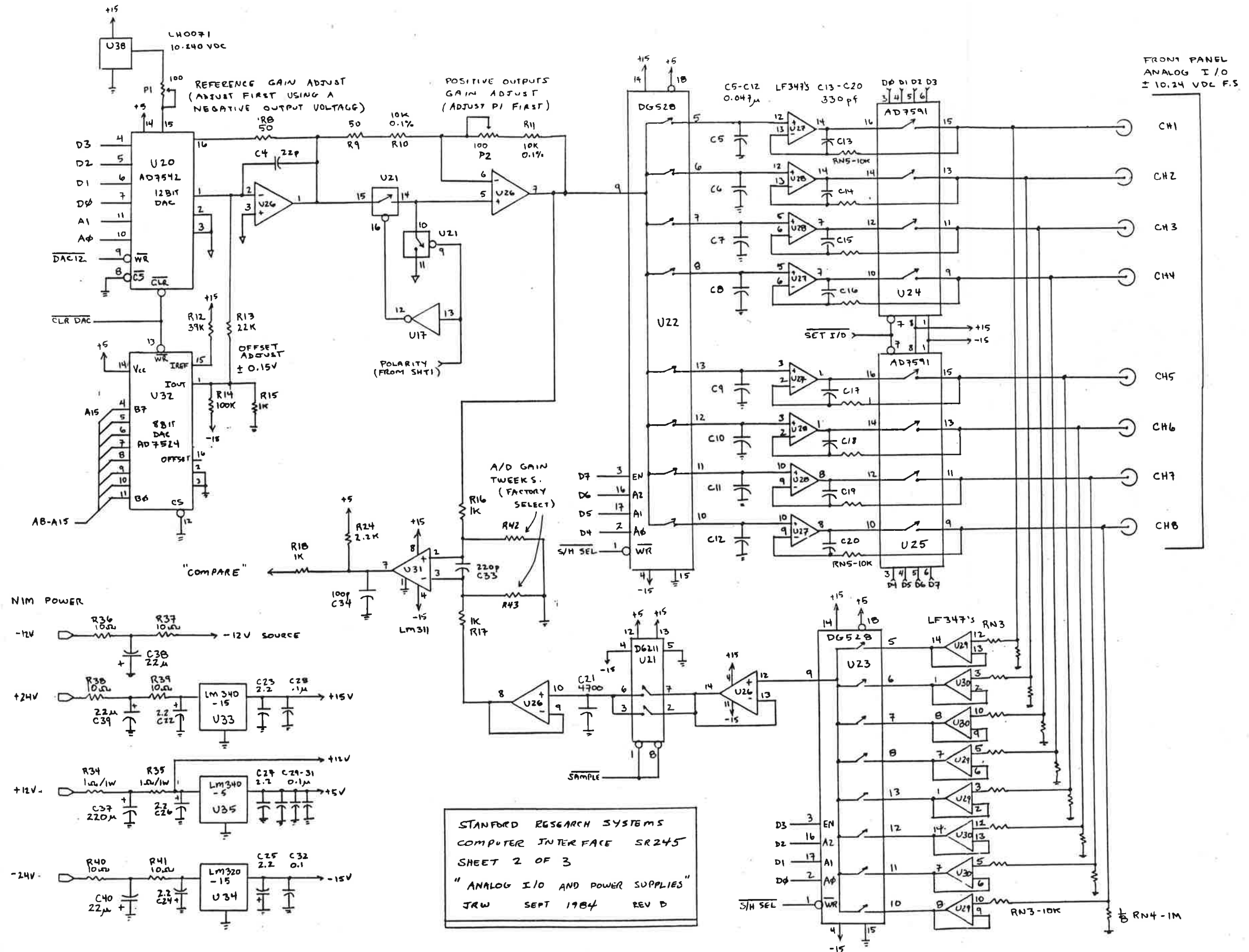
- 1 A suffix denotes channel 1 components. Channels 2, 3, and 4 will have B, C, and D suffix respectively.
- 2 R29, R30, D11, and SW1 are channel 1 only.
- 3 Not Stuffed: C21A through D, C22A through D, C7A through D, P3
- 4 Adjust C6 for flat frequency response.
- 5 May select R25 for best DC gain match.
- 6 C12B, C12C, and C12D are 75P (not shown)

Stanford Research Systems 1290 D. Reamwood Ave. Sunnyvale, CA 94089 (408) 744-9040		
Title	SR445 DC to 300MHz Amplifier	
Size	Document Number	REV
C	7-00311	C

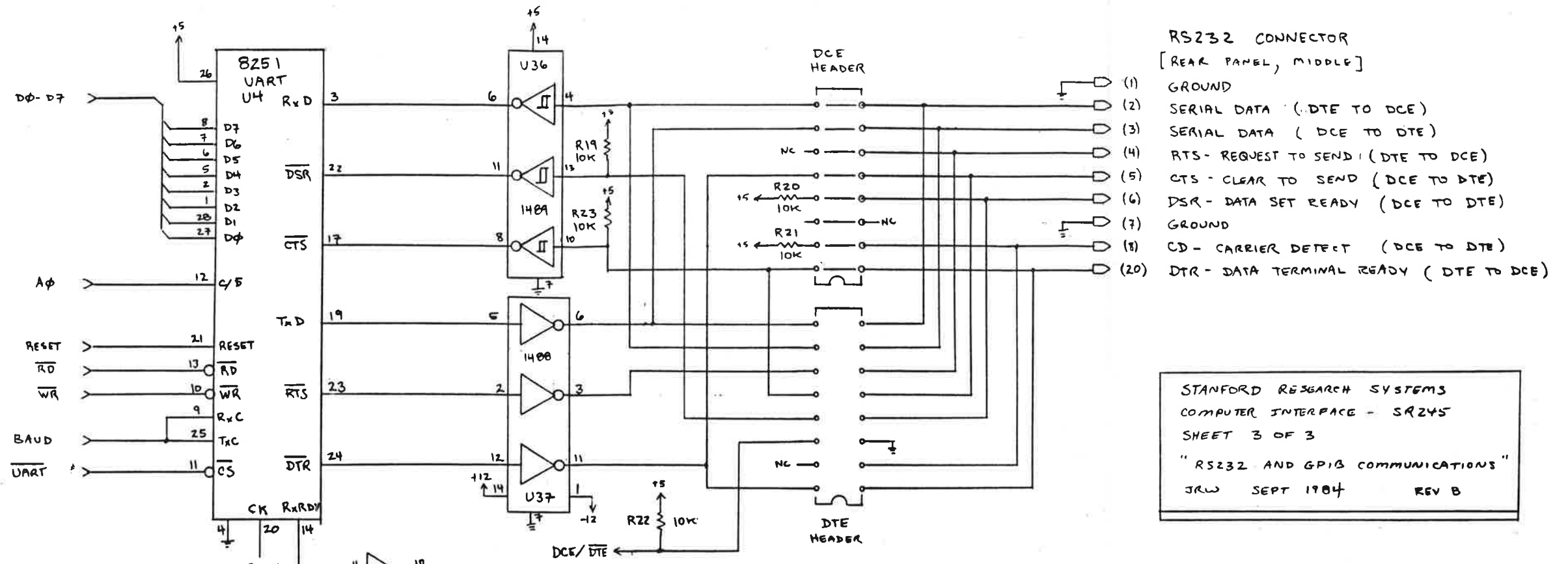


STANFORD RESEARCH SYSTEMS.
 COMPUTER INTERFACE SR245
 SHEET 1 OF 3
 "MICROPROCESSOR AND DIGITAL I/O"
 JRW. SEPT 1984 REV B

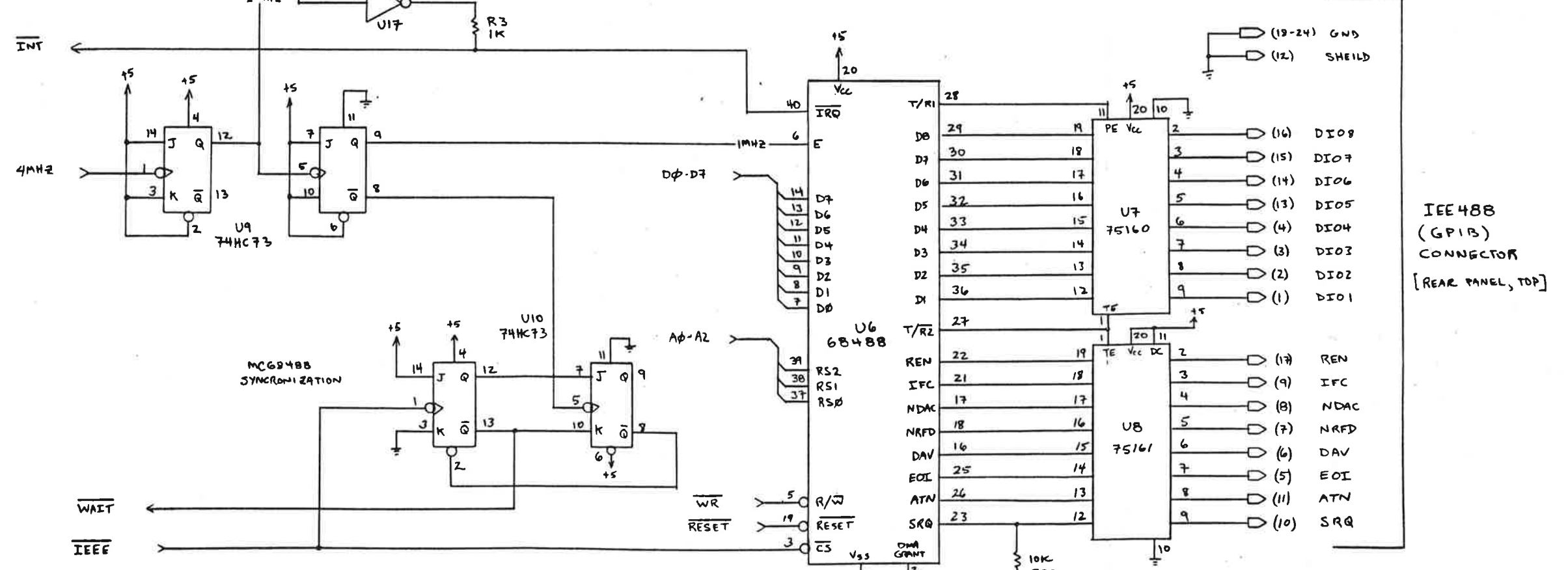


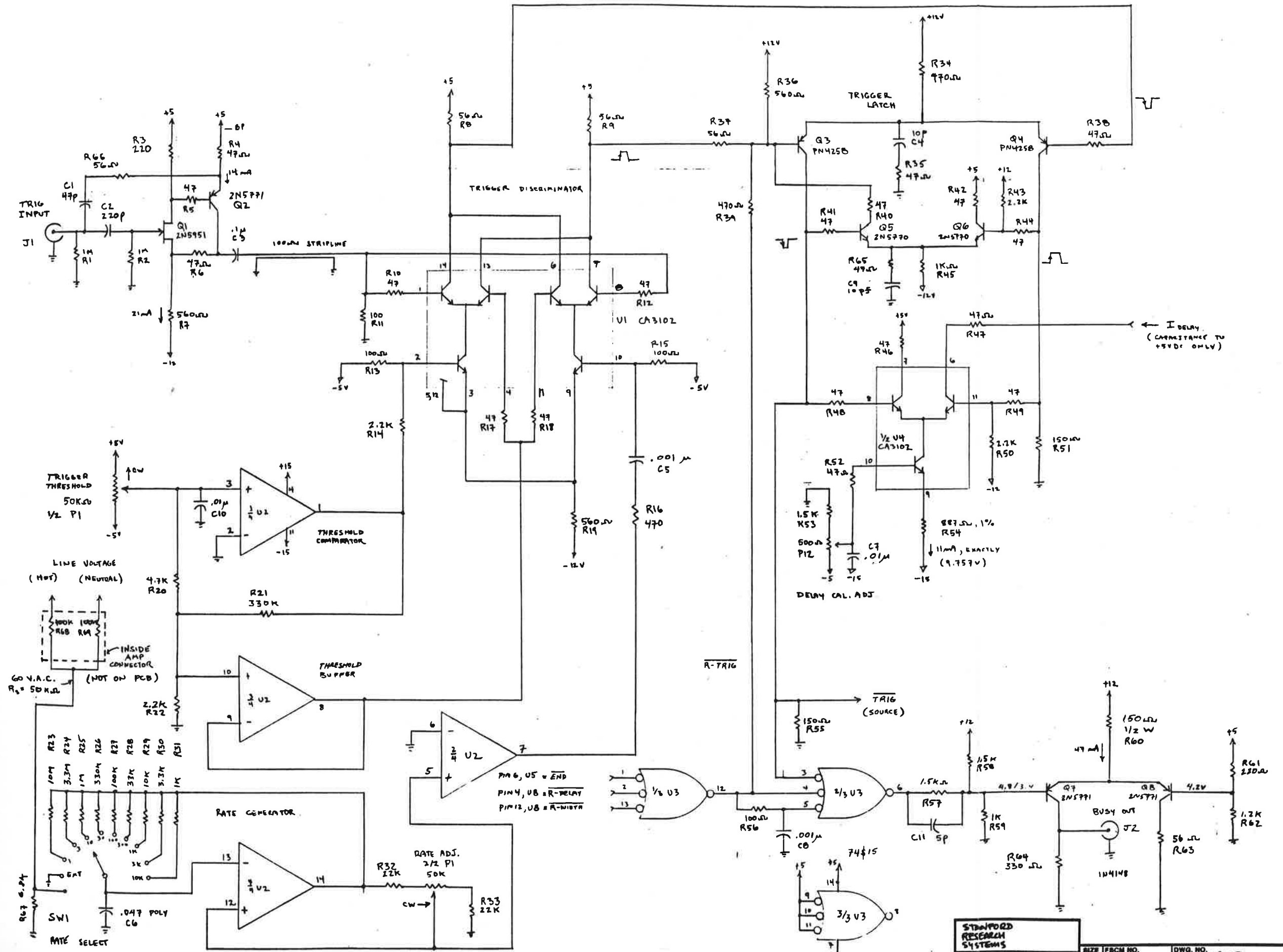


STANFORD RESEARCH SYSTEMS	REV. B
515 TEMPS	DWG. NO. SR245-2
DRAWN 9-84	SCALE
ISSUED JRLW	SHEET 2 OF 3
REPROD. BY STANFORD RESEARCH SYSTEMS, INC.	



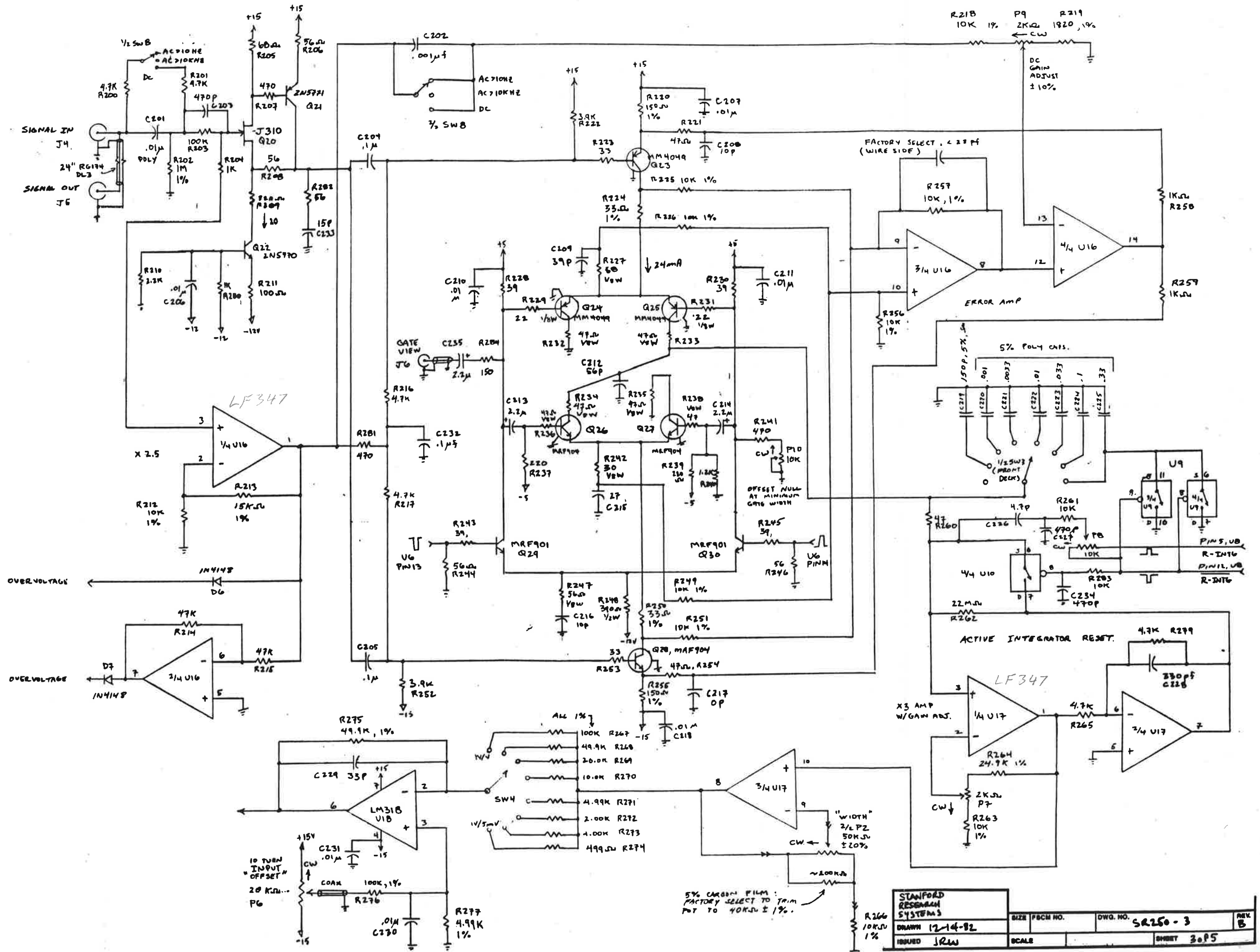
STANFORD RESEARCH SYSTEMS
COMPUTER INTERFACE - SR245
SHEET 3 OF 3
"RS232 AND GPIB COMMUNICATIONS"
JRW SEPT 1984 REV B





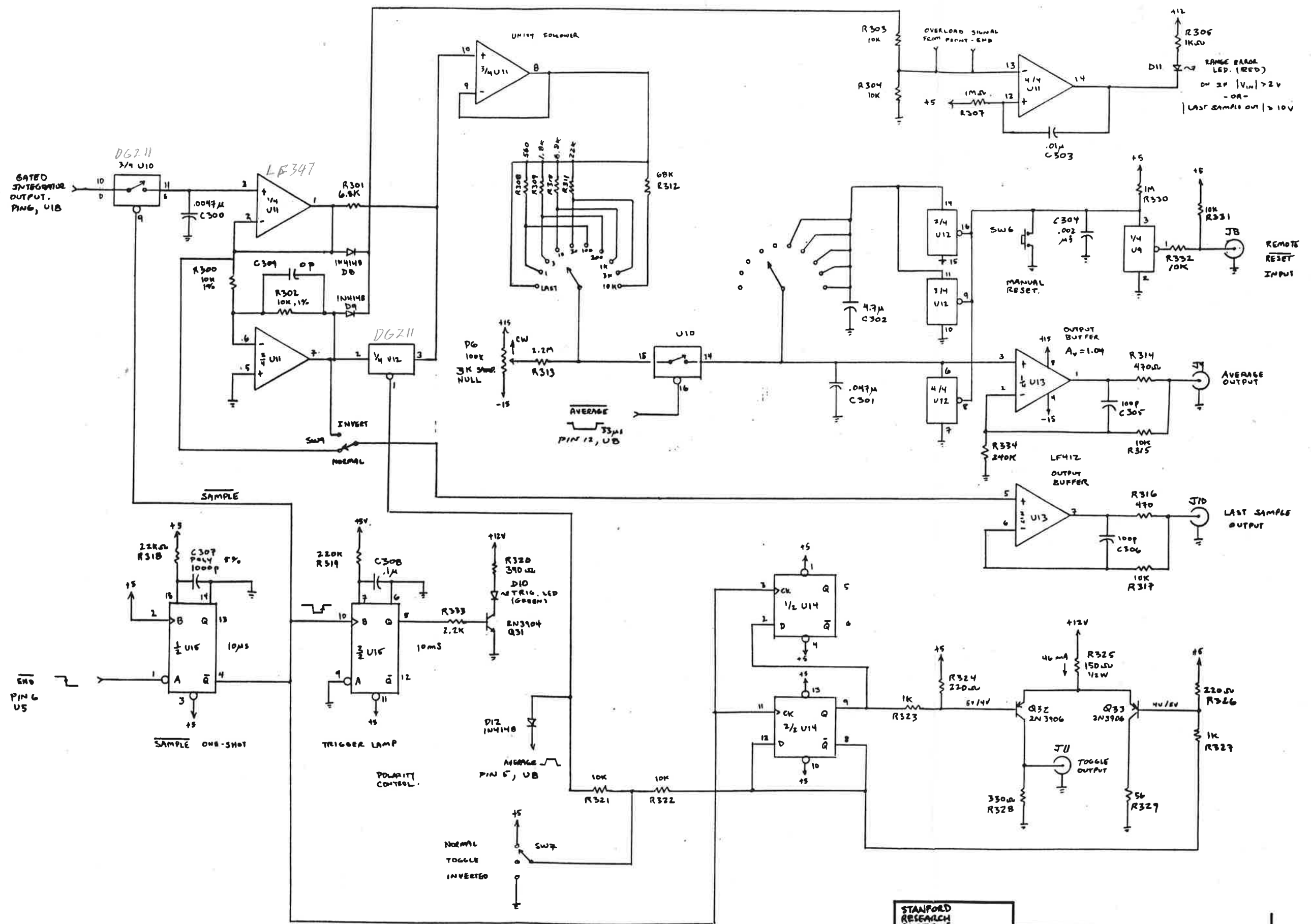
STANFORD RESEARCH SYSTEMS		SIZE	PSCM NO.	DWG. NO.	REV.
DRAWN	12-14-82			SR250-1	B
ISSUED	JRW	SCALE		SHEET	1 of 5

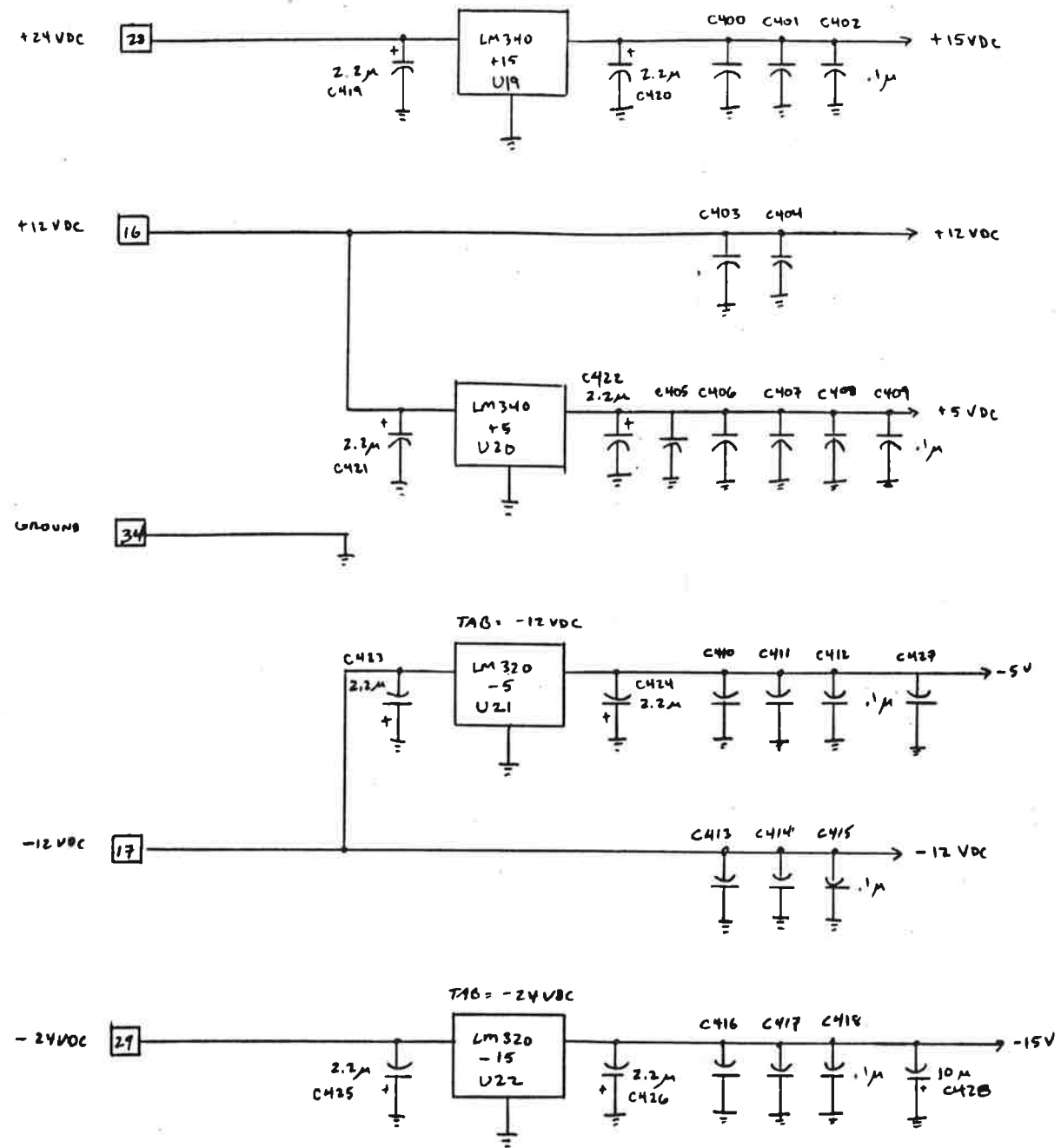
© BISHOP GRAPHICS, INC.



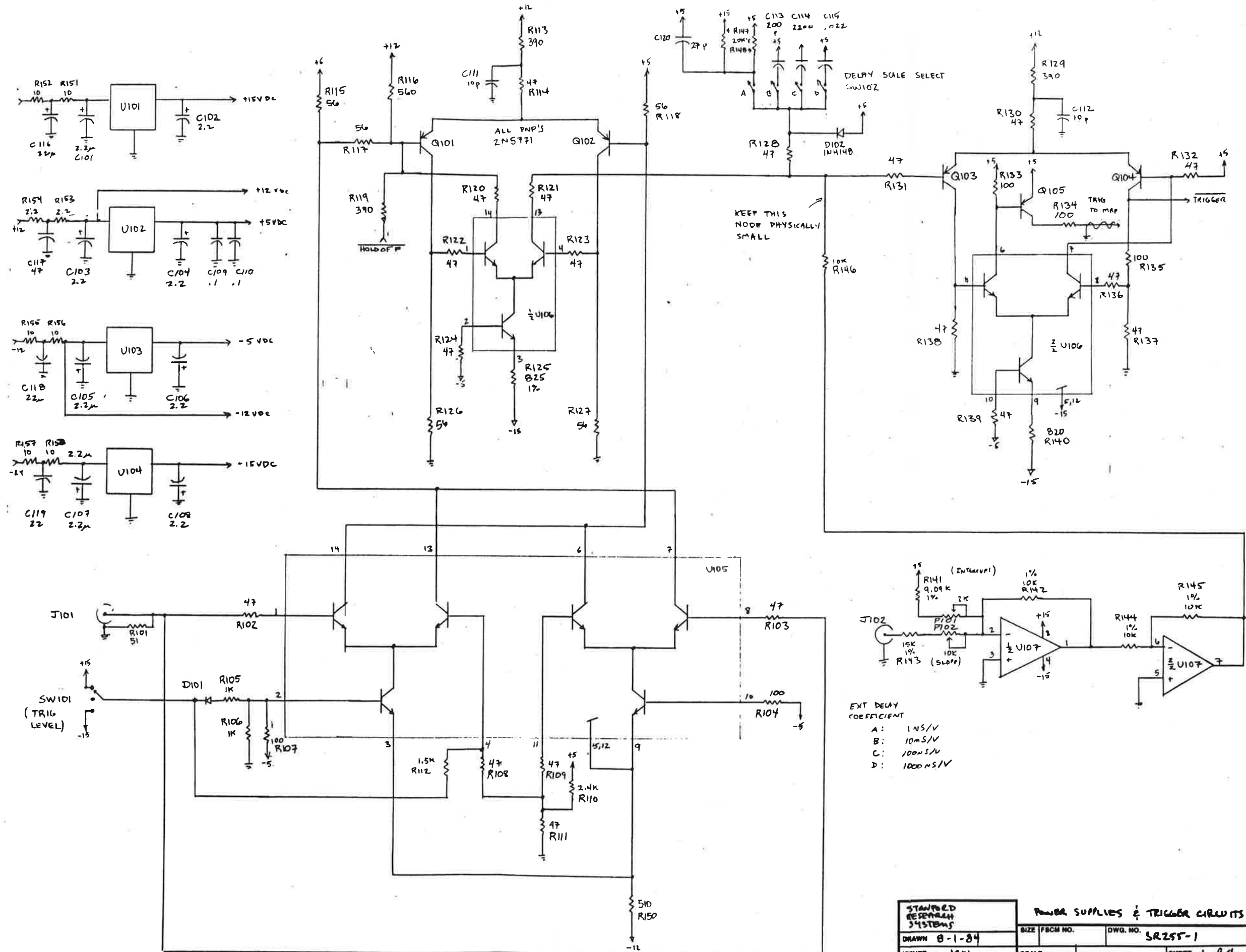
STANFORD RESEARCH SYSTEMS		SIZE	FORM NO.	DWG. NO.	REV.
DRAWN 12-14-82		SCALE		SR250-3	B
ISSUED JRW				SHEET	3 OF 5

© BISHOP GRAPHICS, INC.

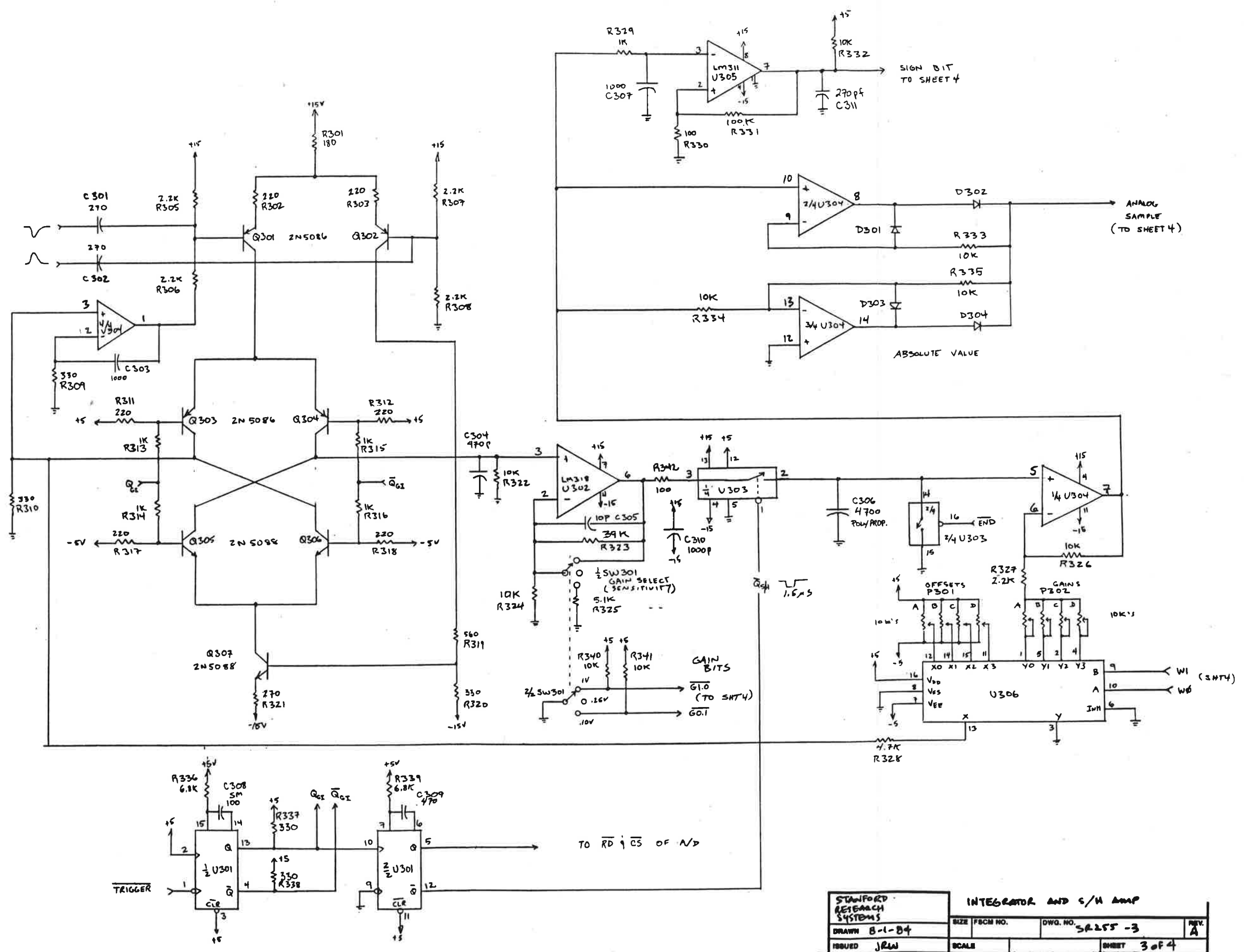




STANDARD ESSENTIAL SYSTEMS		SIZE	FSCM NO.	DWG. NO.	REV.
DRAWN 12-19-82				58250-5	B
ISSUED JRW	SCALE			SHEET 5 of 5	

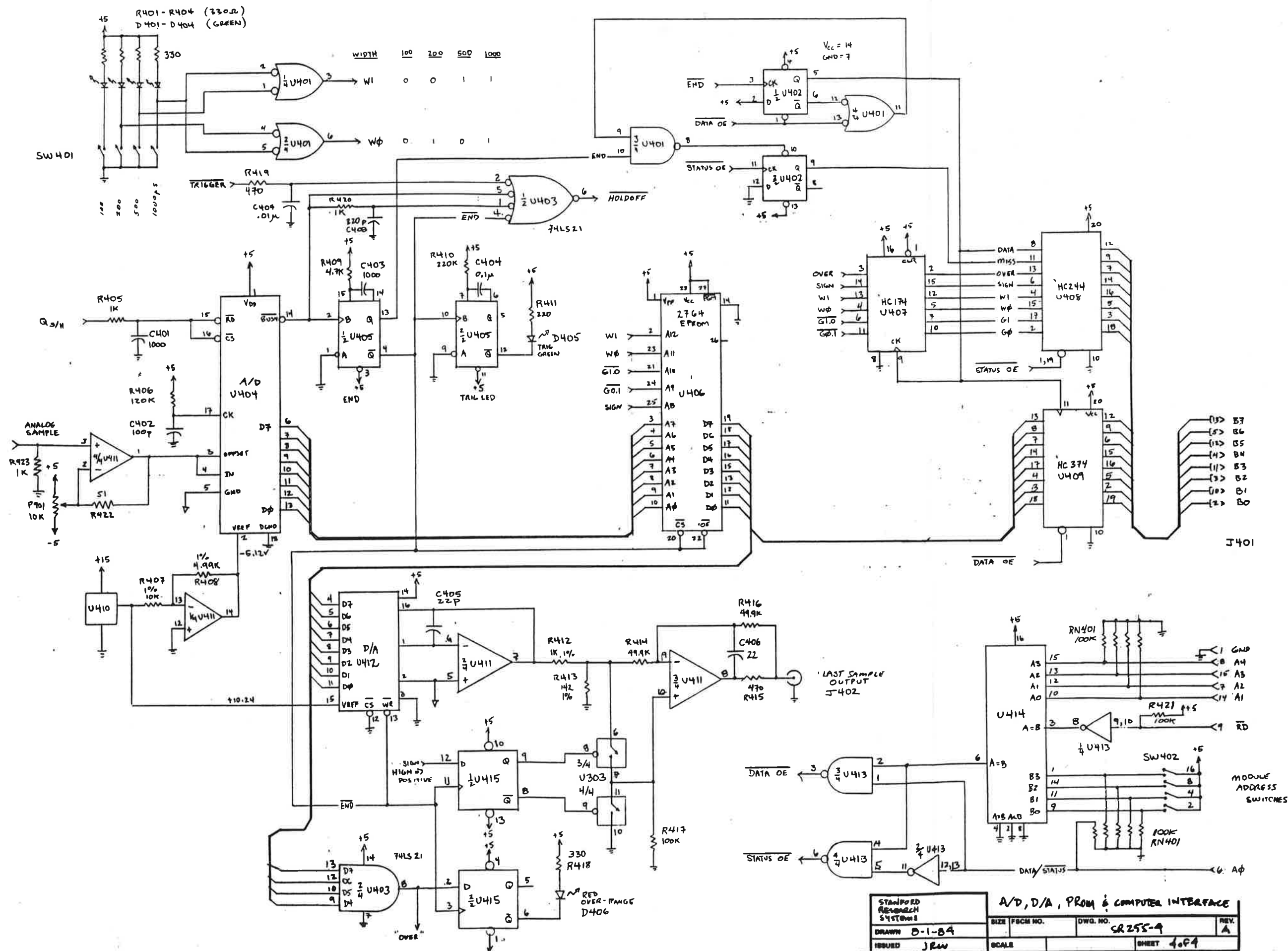


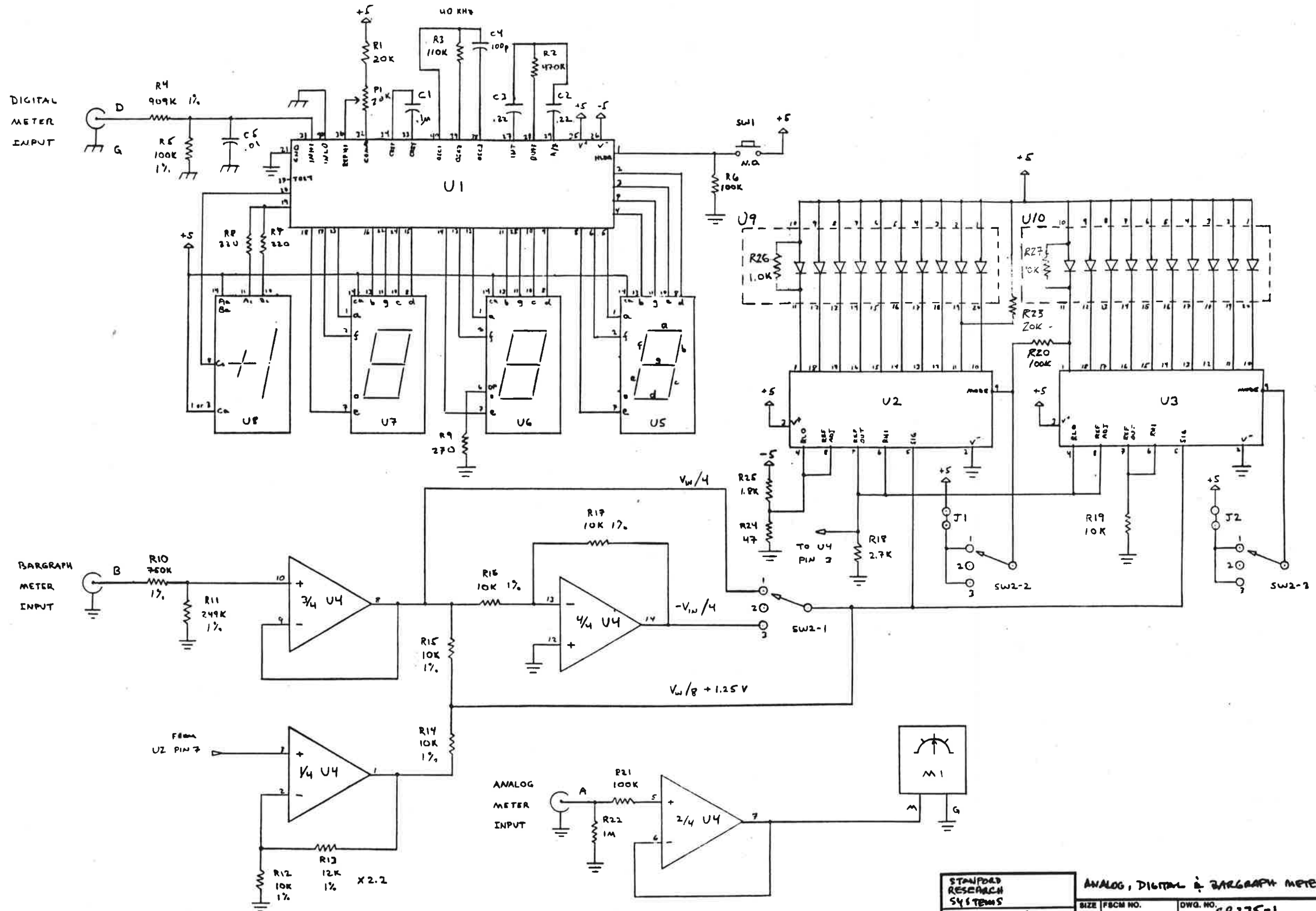
STARBUCK RESEARCH SYSTEMS	POWER SUPPLIES & TRIGGER CIRCUITS		
DRAWN 8-1-84	SIZE FC8M NO.	DWG. NO. SR255-1	REV. A
ISSUED JLN	SCALE	SHEET 1 OF 4	



STANFORD RESEARCH SYSTEMS		INTEGRATOR AND S/H AMP		
DRAWN B-1-B4	SIZE F8CM NO.	DWG. NO. SR255-3	REV. A	
ISSUED JRLW	SCALE	SHEET 3 of 4		

BISHOP GRAPHICS, INC. REORDER NO. 1880

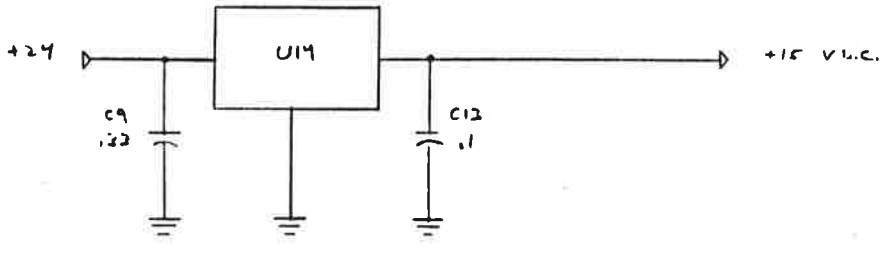
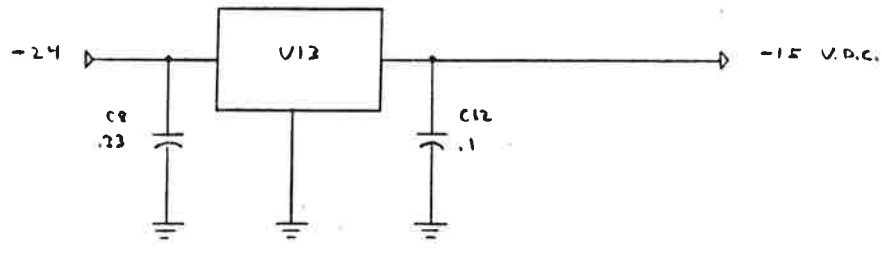
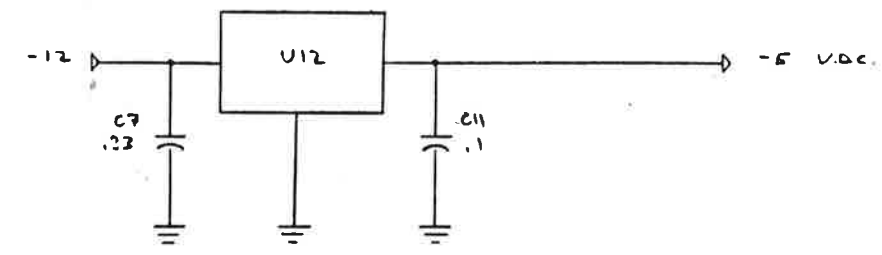
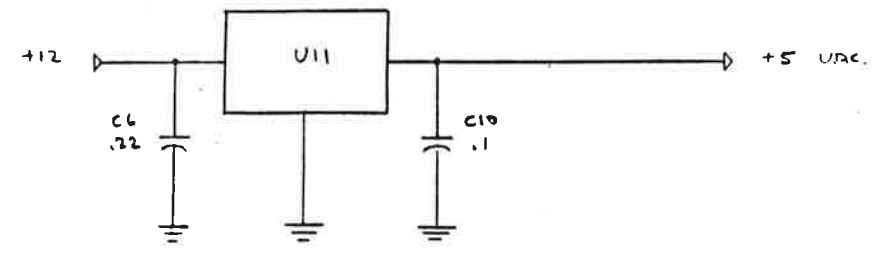




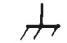
STANFORD RESEARCH SYSTEMS		ANALOG, DIGITAL & BARGRAPH METERS	
DRAWN 12-22-82	SIZE FSCM NO.	DWG. NO. SR275-1	REV. B
ISSUED SRL	SCALE	SHEET 1 of 2	

BISHOP GRAPHICS, INC.
REORDER NO. 188

CIRCUIT ELEMENT	TYPE	PIN # +5	PIN # -5	PIN # GND	PIN # +15	PIN # -15
U1	ICL7117	25	26	21	-	-
U2, U3	LM2914CN	3	-	2	4	11
U4	LF247A	-	-	-	4	11
U5, U6, U7	MAX92A	14	-	-	-	-
U8	MAX93A	1, 14	-	-	-	-
U9, U10	HEP-4820	1-10	-	-	-	-
U11	MC7905CT	-	-	-	-	-
U12	MC7905CP	-	-	-	-	-
U13	MC7915CP	-	-	-	-	-
U14	MC7915CP	-	-	-	-	-

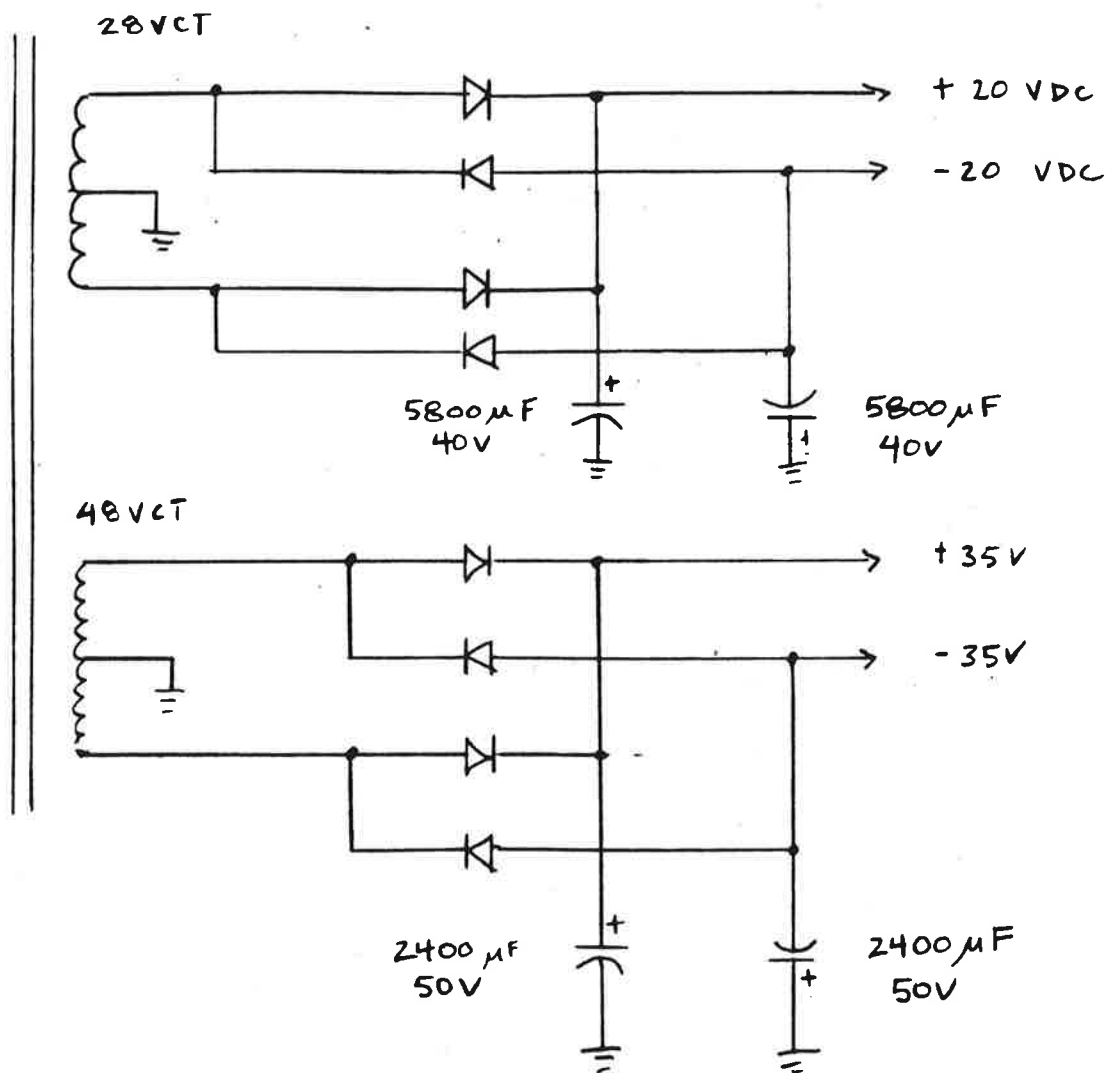
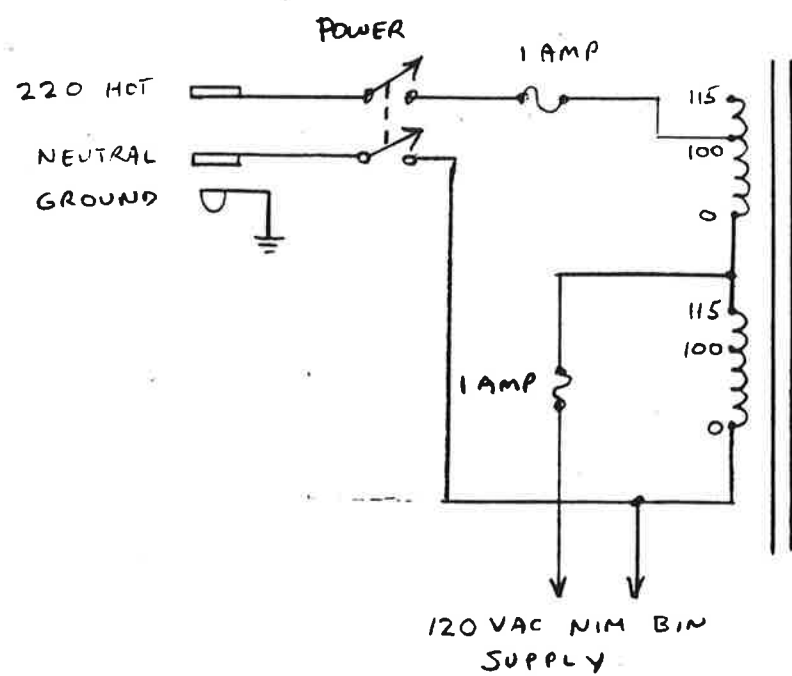
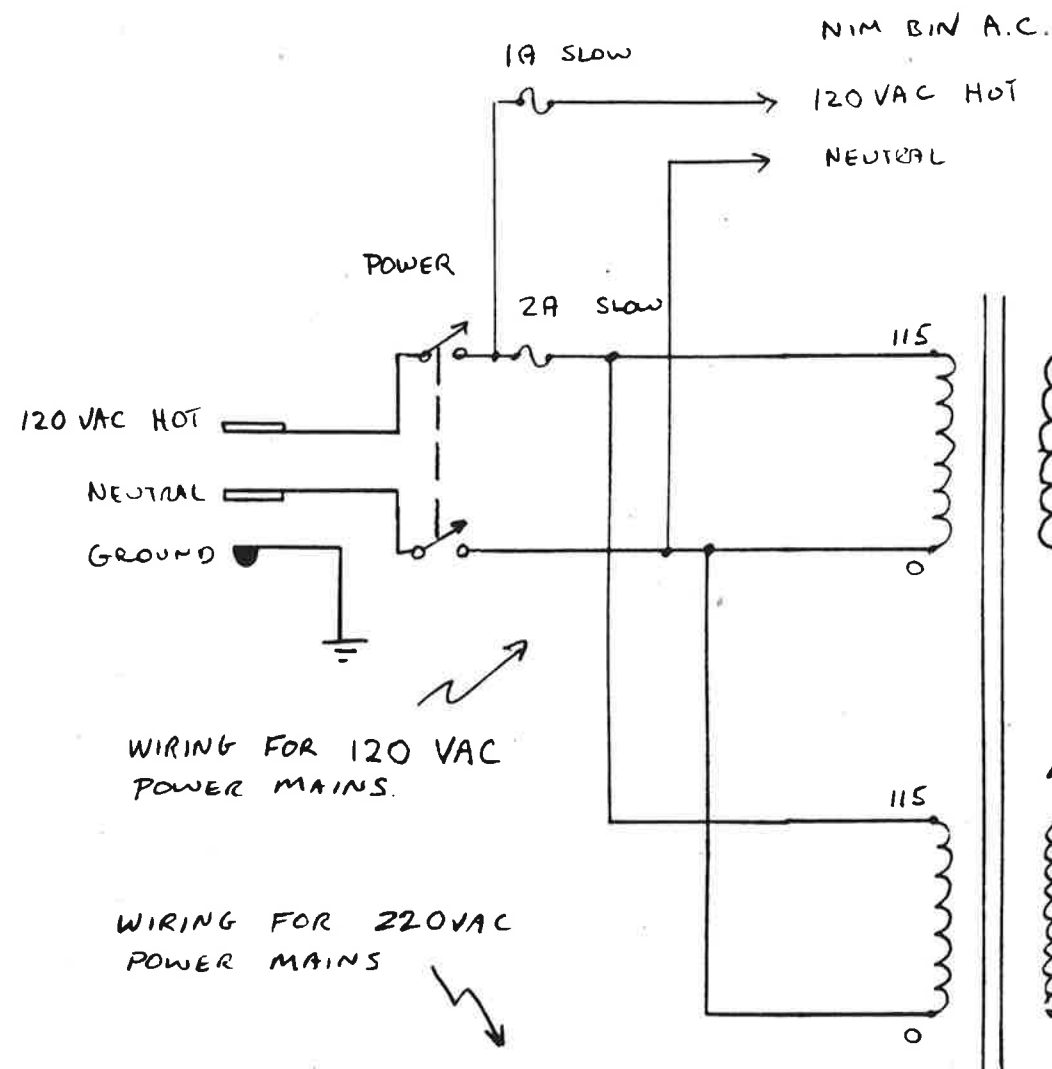


NOTES

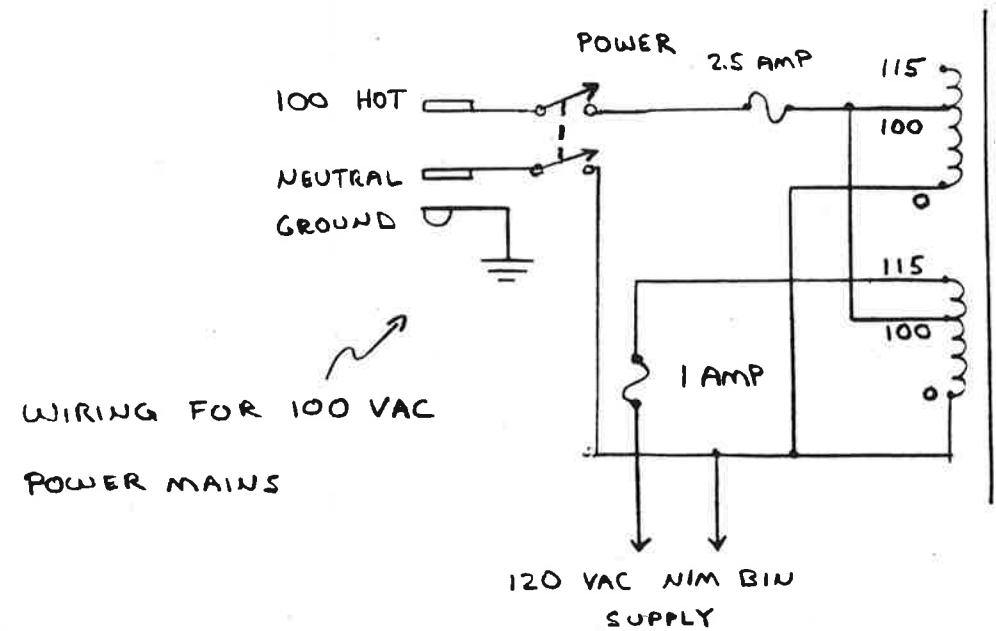
1. THE ZERO-CENTER MODE OF THE BARGRAPH DISPLAY IS ALWAYS A FLYING DOT. THE OTHER MODES OF THE BARGRAPH DISPLAY MAY BE CONVERTED TO FLYING DOT BY REMOVING JUMPER J1 AND J2.
2.  SYMBOL INDICATES GROUNDING TO FRONT PANEL

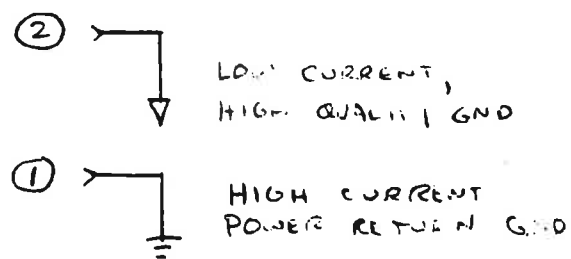
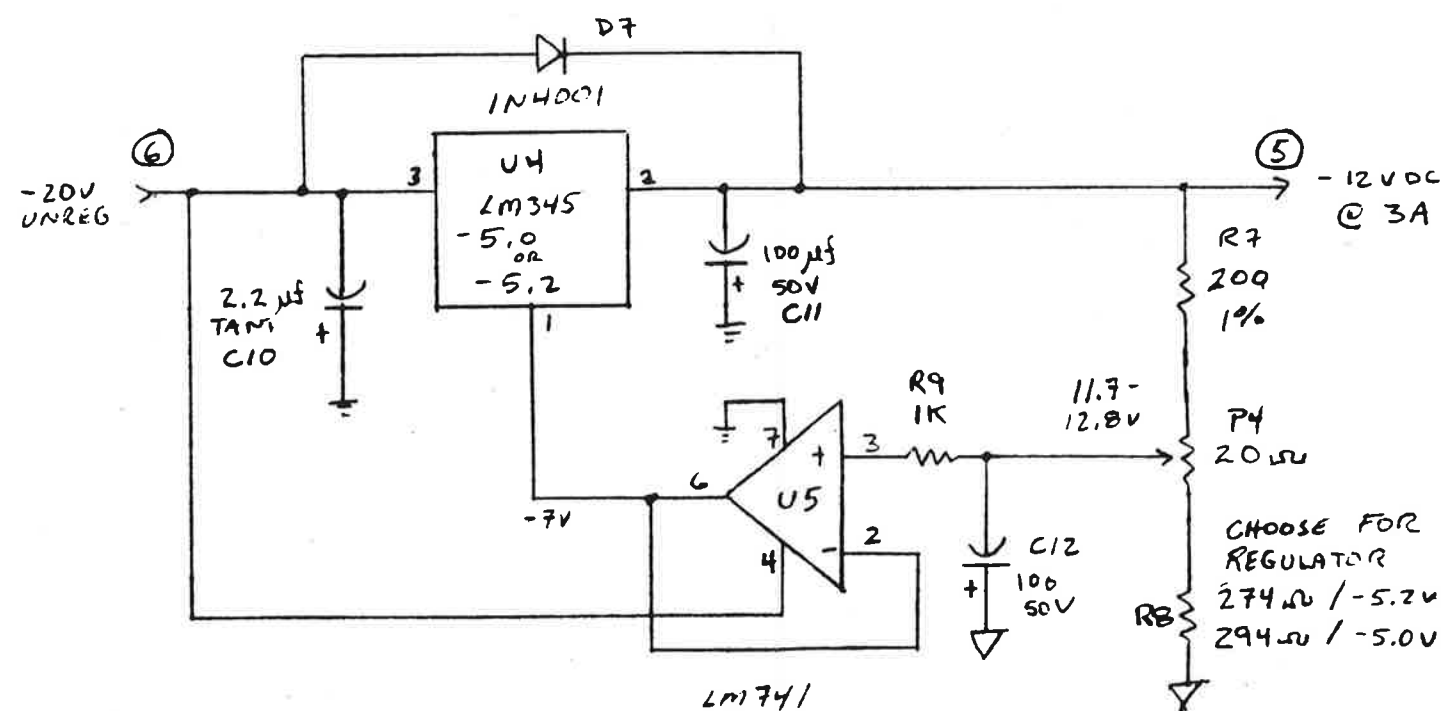
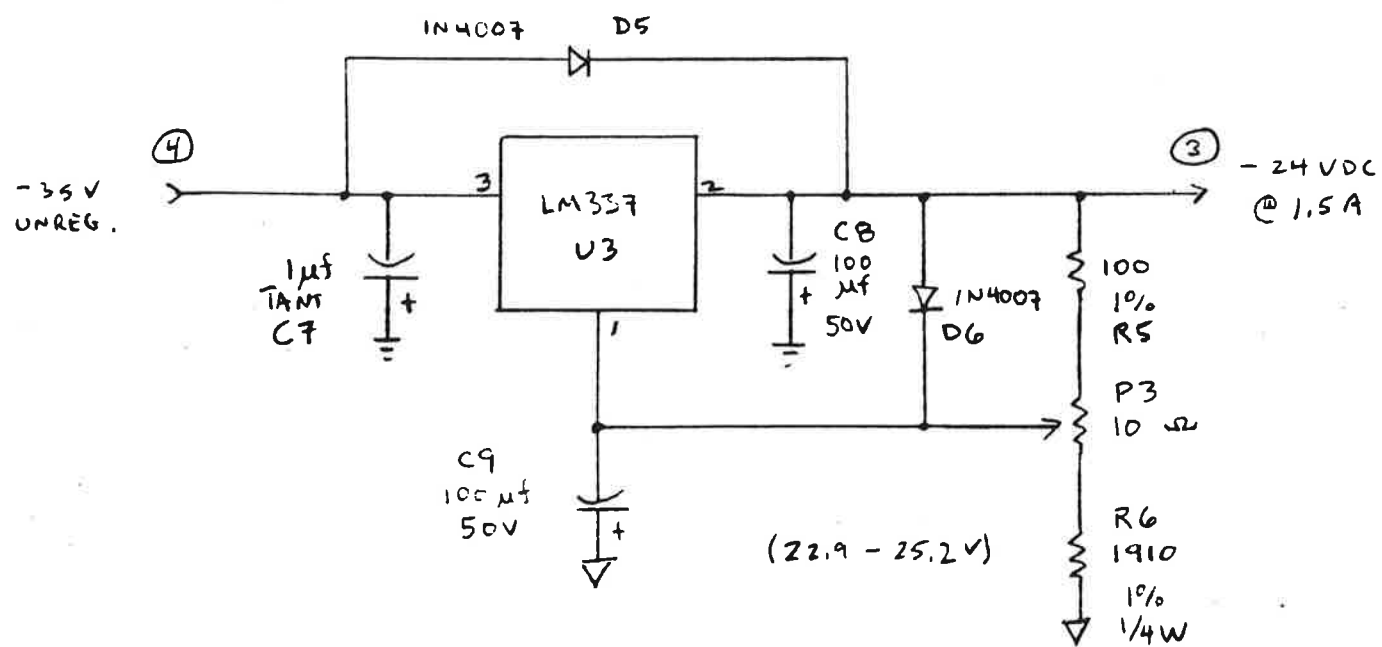
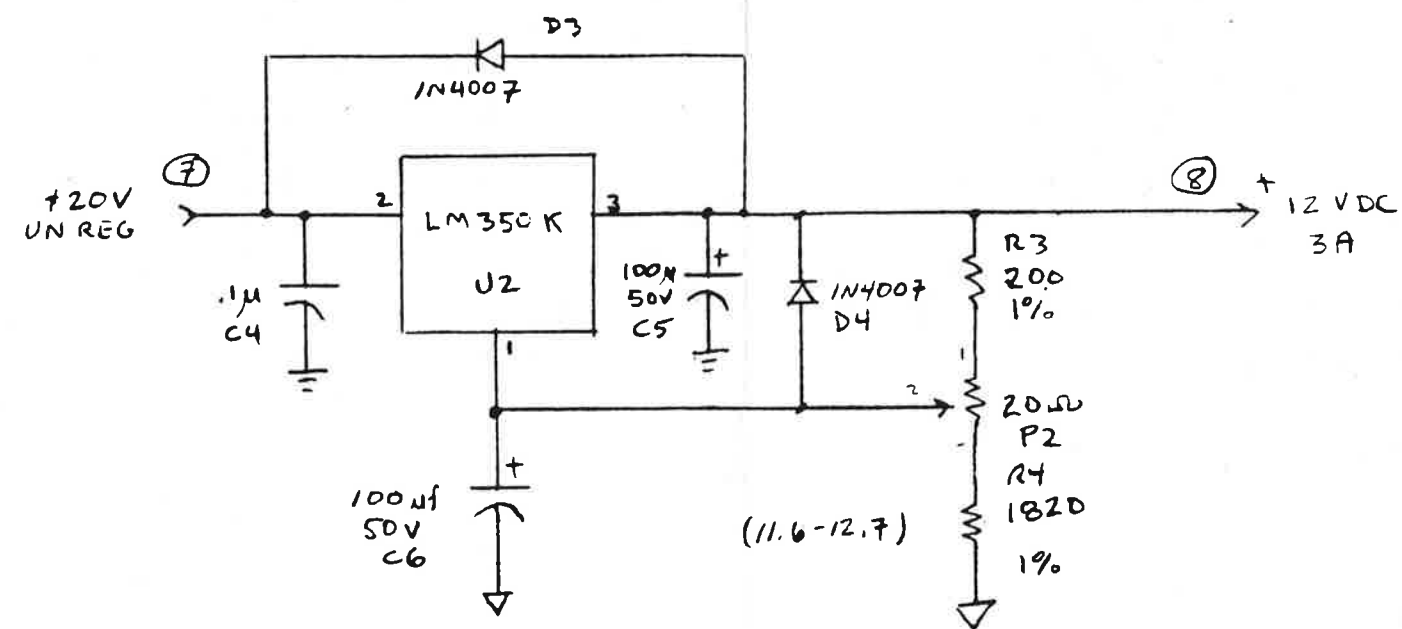
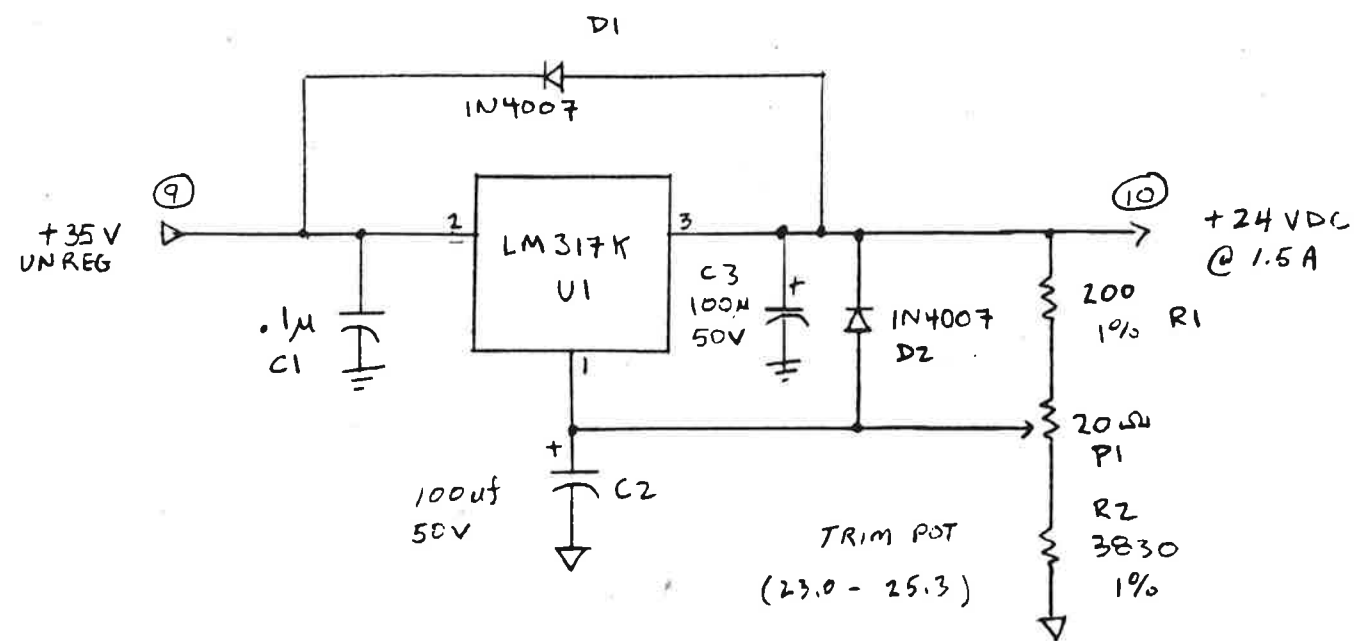
STANFORD RESEARCH SYSTEMS		VOLTAGE REGULATORS		
DRAWN 12-22-82	SIZE FSCM NO.	DWG. NO. SR275-2	REV. B	
ISSUED SRL	SCALE	SHEET 2 of 2		

BISHOP GRAPHICS, INC.
REORDER NO. 100



SR280 NIM BIN UNREGULATED
POWER SUPPLY. 8/83

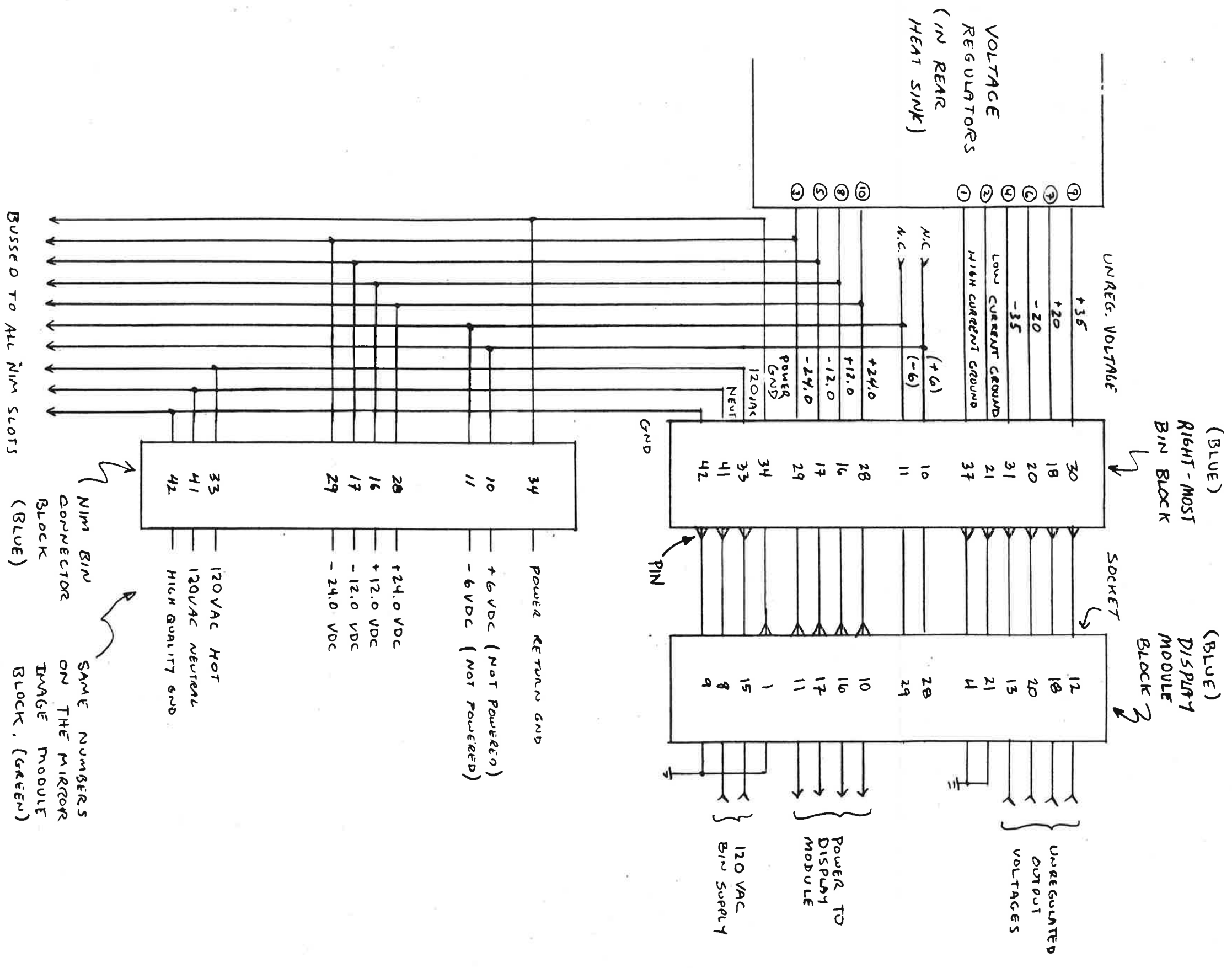




ALL 1% RESISTORS ARE RN55C

(N) PIN NUMBER ON IN-LINE CONNECTOR

SR280 REGULATOR SCHEMATIC REV-C



SR280 BIN WIRING DIAGRAM