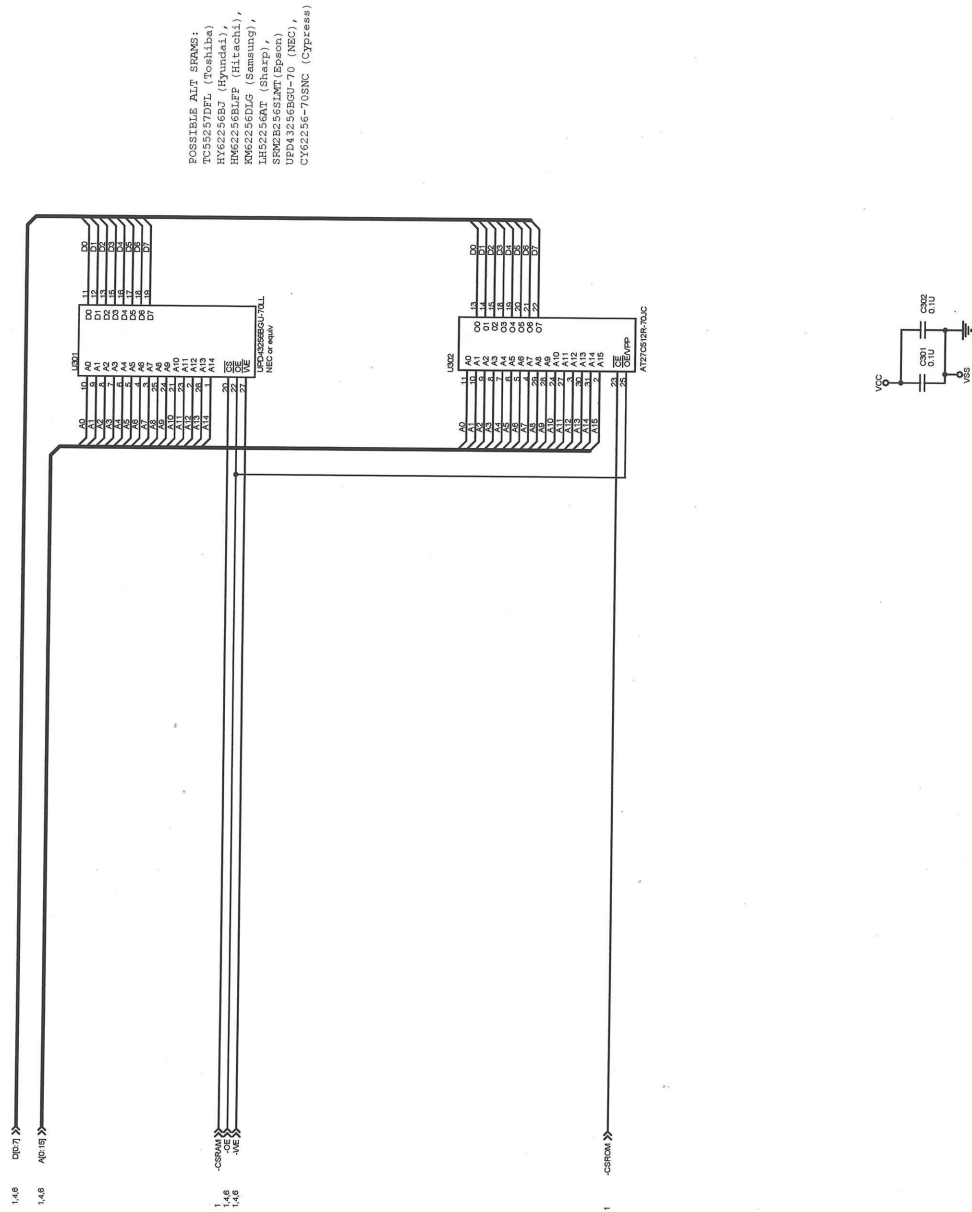


File	S:\MANUFACTURE\Microcontroller
Part	1200000101
Rev	1
Date	10/20/01 13:29:52

NOTE: BOTH SRAM AND EPROM MUST BE < 85NS ACCESS TIME.



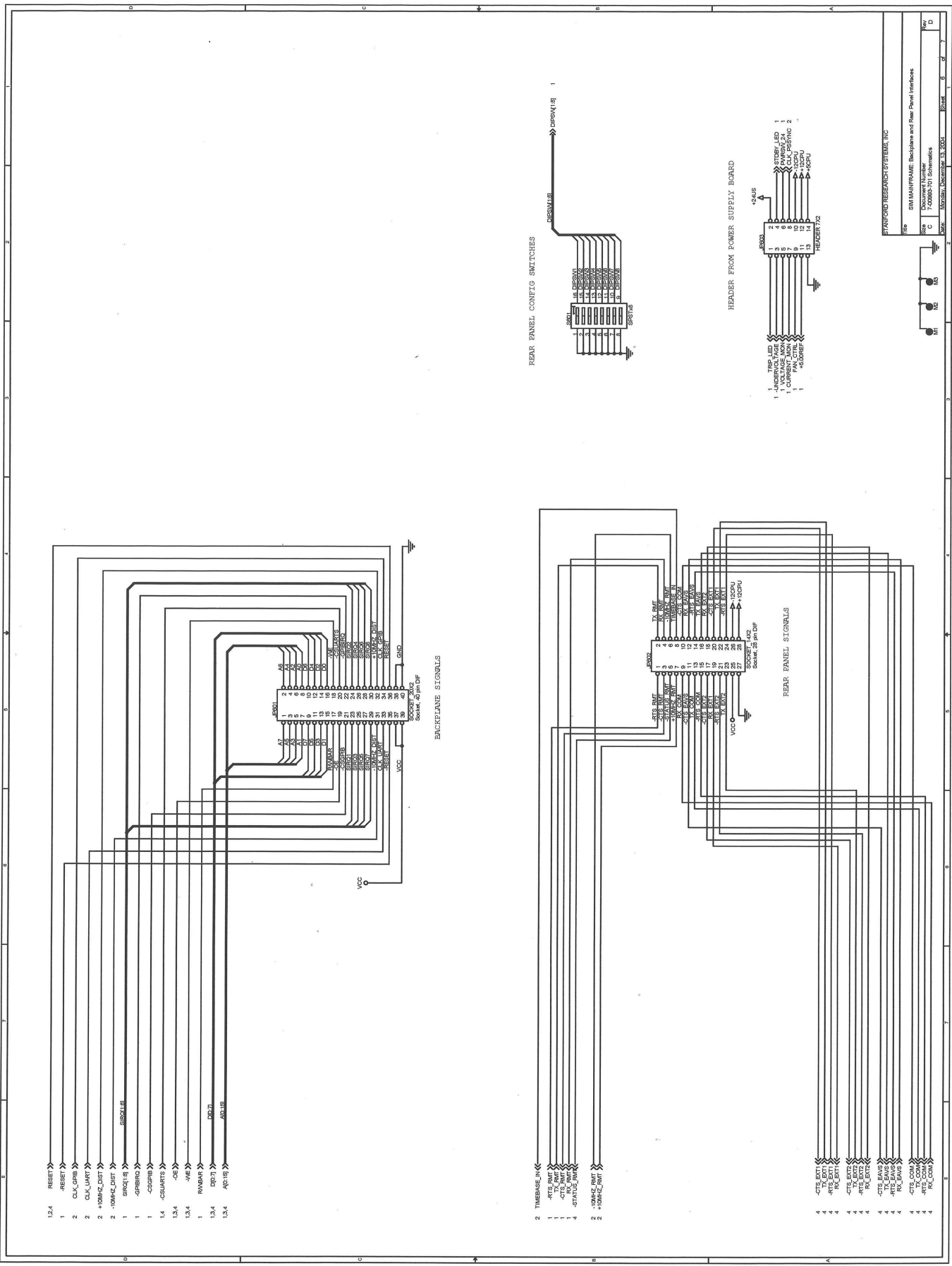
POSSIBLE ALU SRAMS:
 TC5927DFL (Toshiba)
 HM22256BU (Hyundai)
 HM22256BU (Hitachi)
 RM22256D/G (Samsung)
 IH52256AT (Sharp)
 SRN2B256JMT (Epson)
 UPL43256BU-70 (NEC)
 CY62256-70SNC (Cypress)

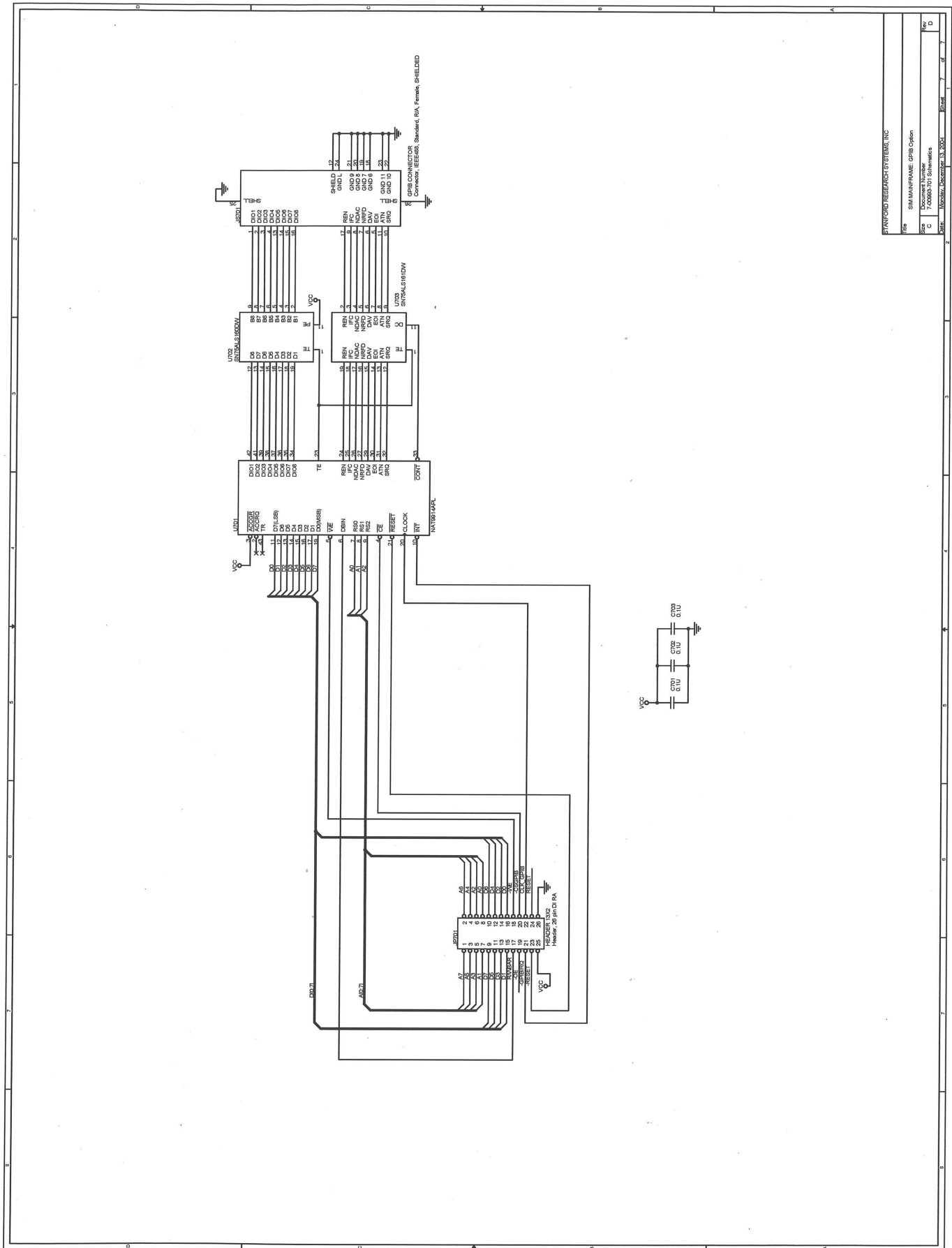
STANFORD RESEARCH SYSTEMS, INC.

Rev	0
Date	01/11/88
By	J. J. ...
Checked	...
Approved	...
Part No.	...
Sheet	3 of 7

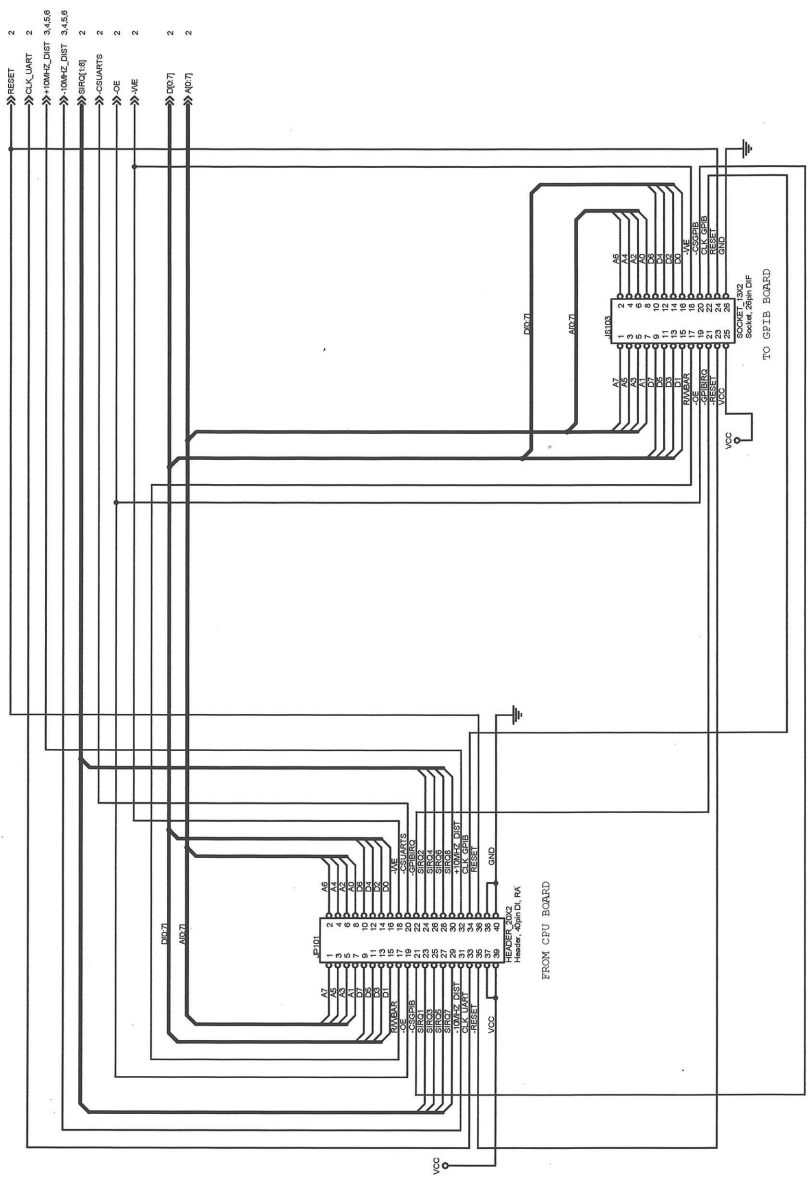
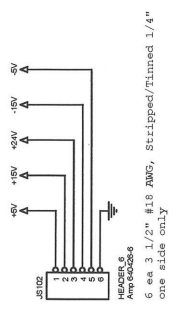
This page intentionally left blank

STANFORD RESEARCH SYSTEMS, INC.	
File	SIMMANFRAME (blank page)
Size	C
Document Number	7-00005701 Schematics
Part	Module Description: 0_0004
Page	5 of 7



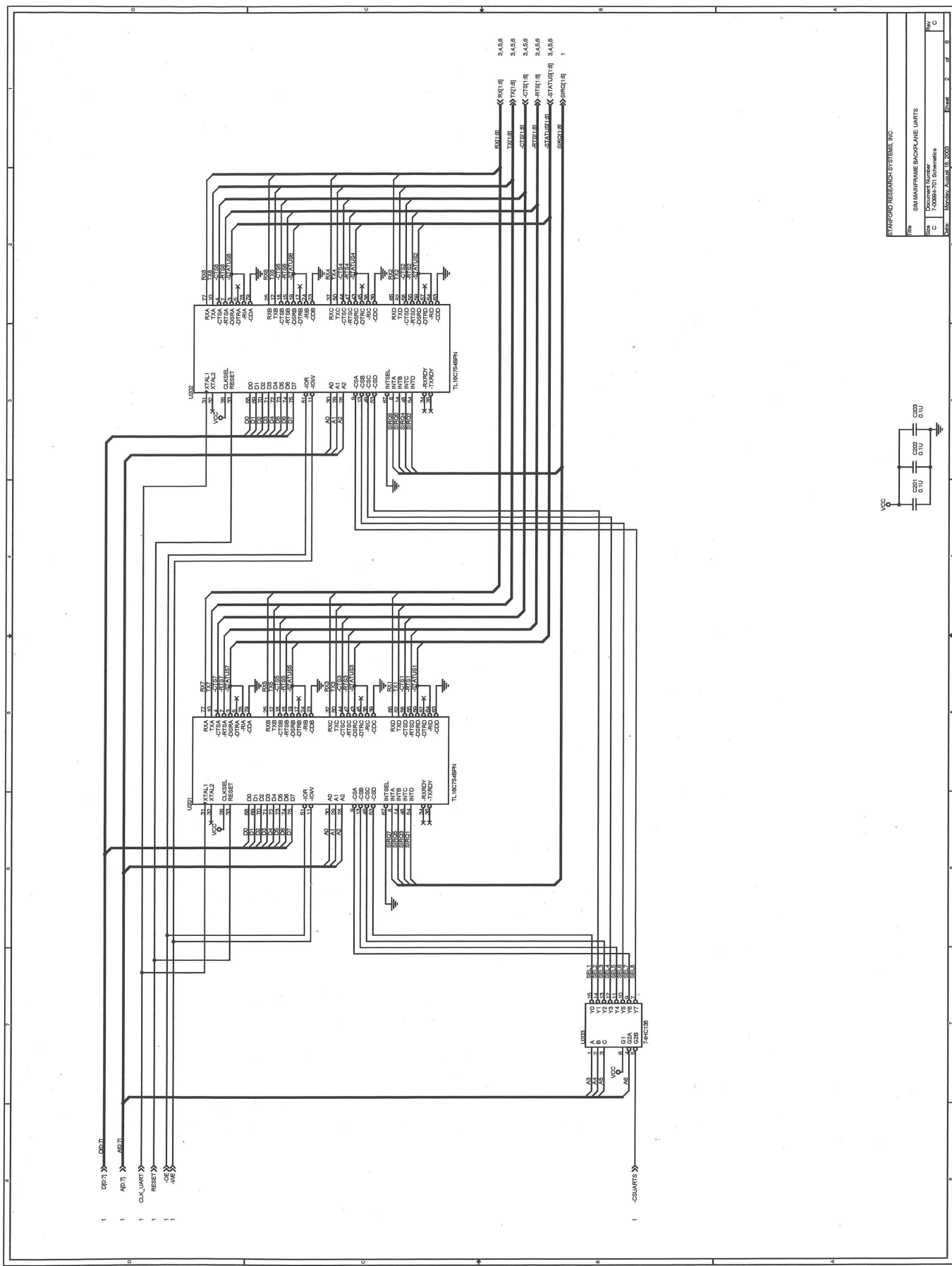


STANFORD RESEARCH SYSTEMS, INC.						
File	SIMMANFRAME.GPIB.Option					
Size	Document Name					
C	7-0090-701 Schematics					
Date	Monday, December 13, 2005	Sheet	7	of	8	1

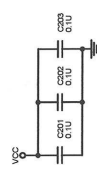


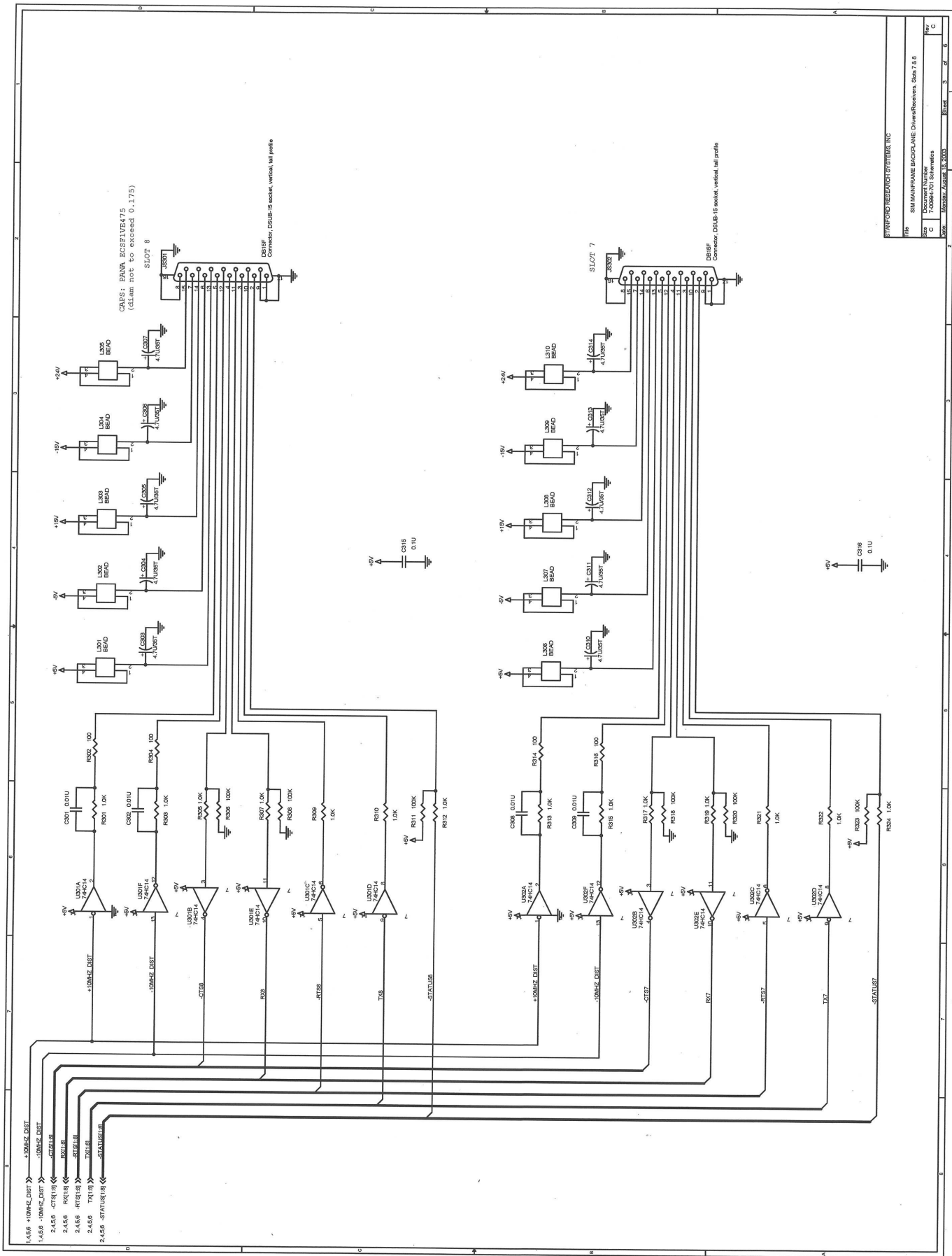
STANFORD RESEARCH SYSTEMS, INC

Rev	SIMMANFRAME BACKPLANE Interconnects
Doc	Document Number
C	7-00000-01 Schematics
Date	October, August 18, 2003
Sheet	8 of 8



STANFORD RESEARCH SYSTEMS, INC	
REV	SIM MAINFRAME BACKPLANE UNITS
DOC	Document Number
CD	Component Catalog
DATE	REVISED: JUNE 1978

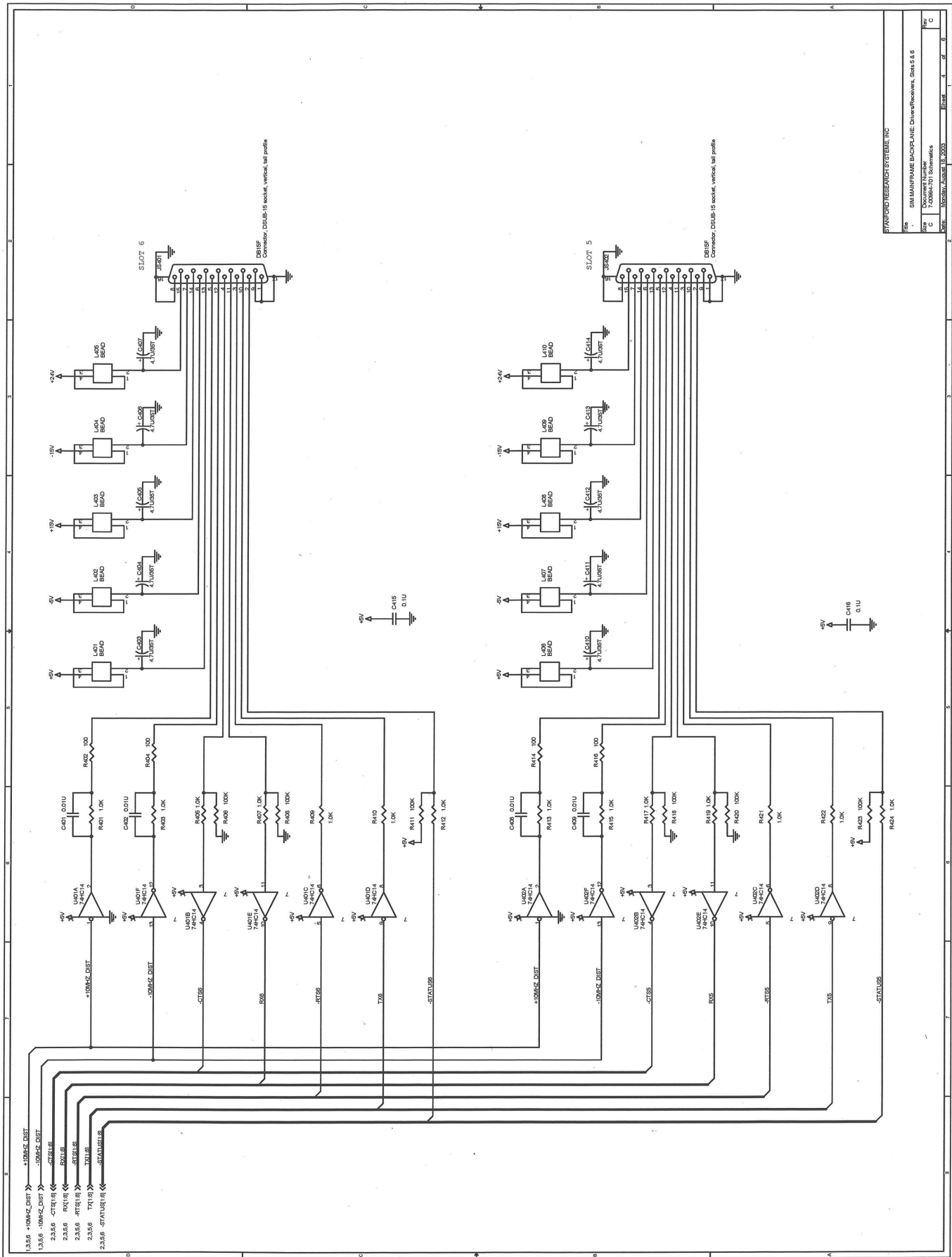




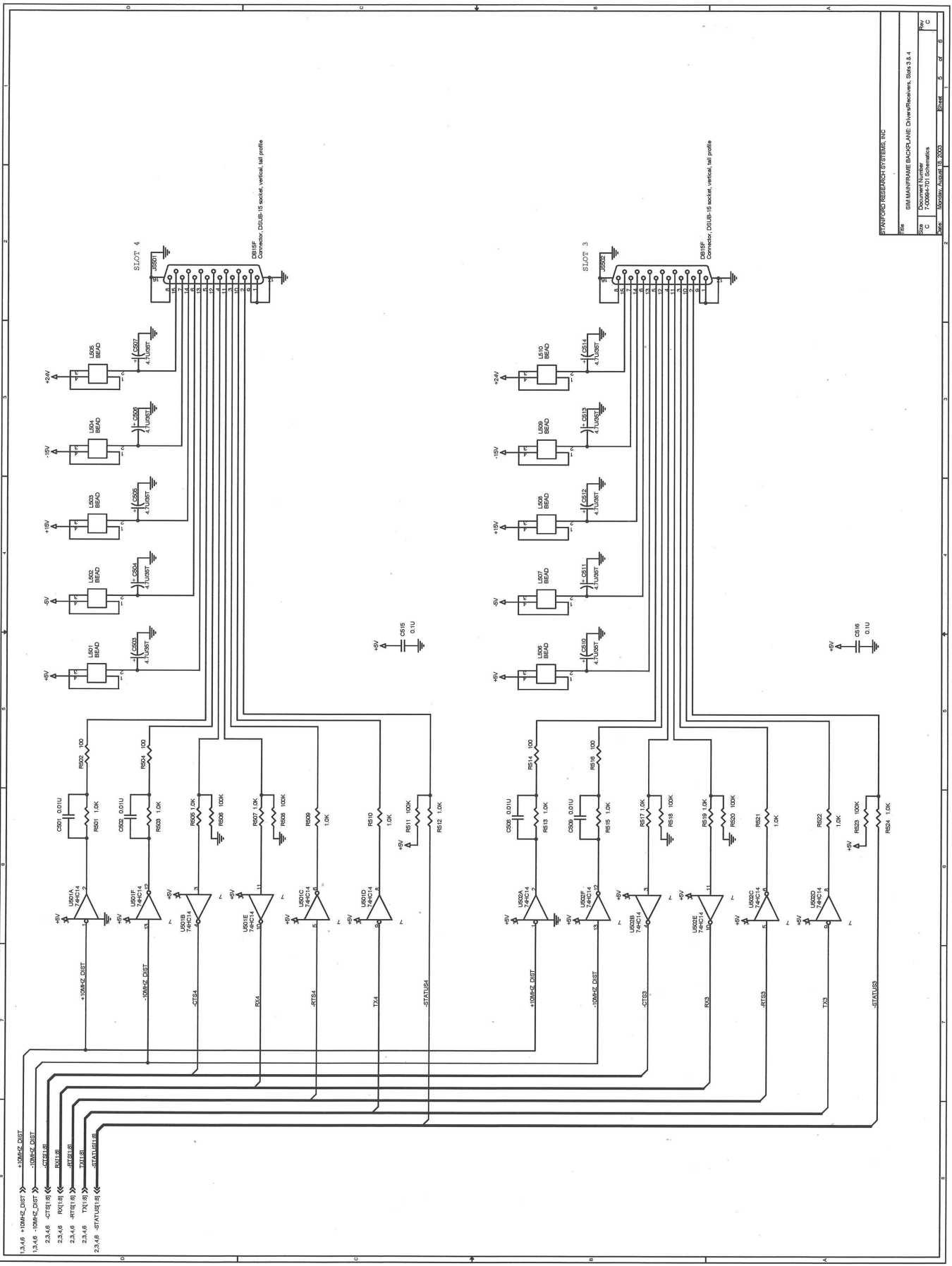
STANFORD RESEARCH SYSTEMS, INC.

Rev	7	00000-703	Schematics
Doc	7	00000-703	Schematics
Proj	7	00000-703	Schematics
Block	3	00	0

Title: SIMULANTIME BACKPLANE Driver/Receivers, Slots 7 & 8
 Date: Monday, August 18, 2003



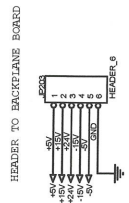
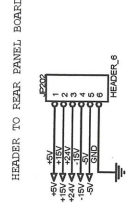
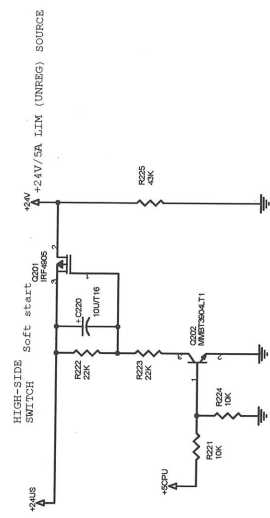
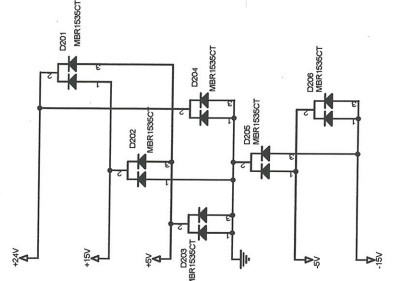
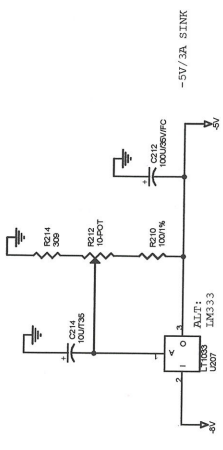
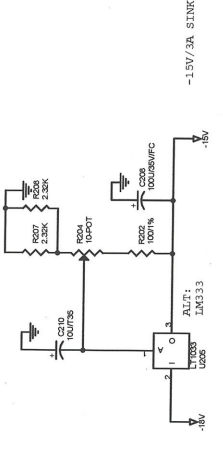
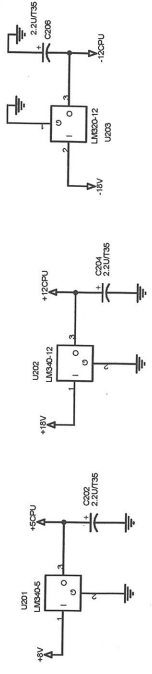
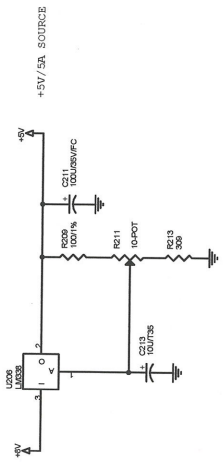
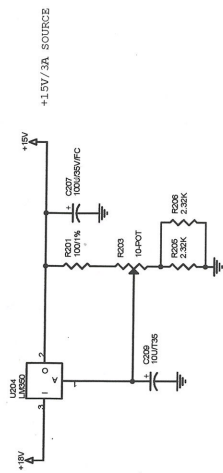
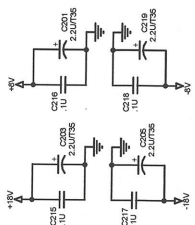
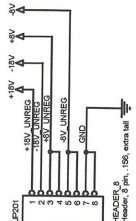
STANFORD RESEARCH SYSTEMS, INC.	
Rev	01 MAINFRAME BACKPLANE Driver/Receivers, Slots 5 & 6
Doc	Document Number
Q	Original/Full Comments
Rev	0
Sheet	1 of 8



STANFORD RESEARCH SYSTEMS, INC.
 File 68M MAINFRAME BACKPLANE Driver/Receiver, Sigs 3 & 4
 Size Document Number
 C 7-00084-701 Schematics
 Date Monday, August 15, 2005 Sheet 5 of 6

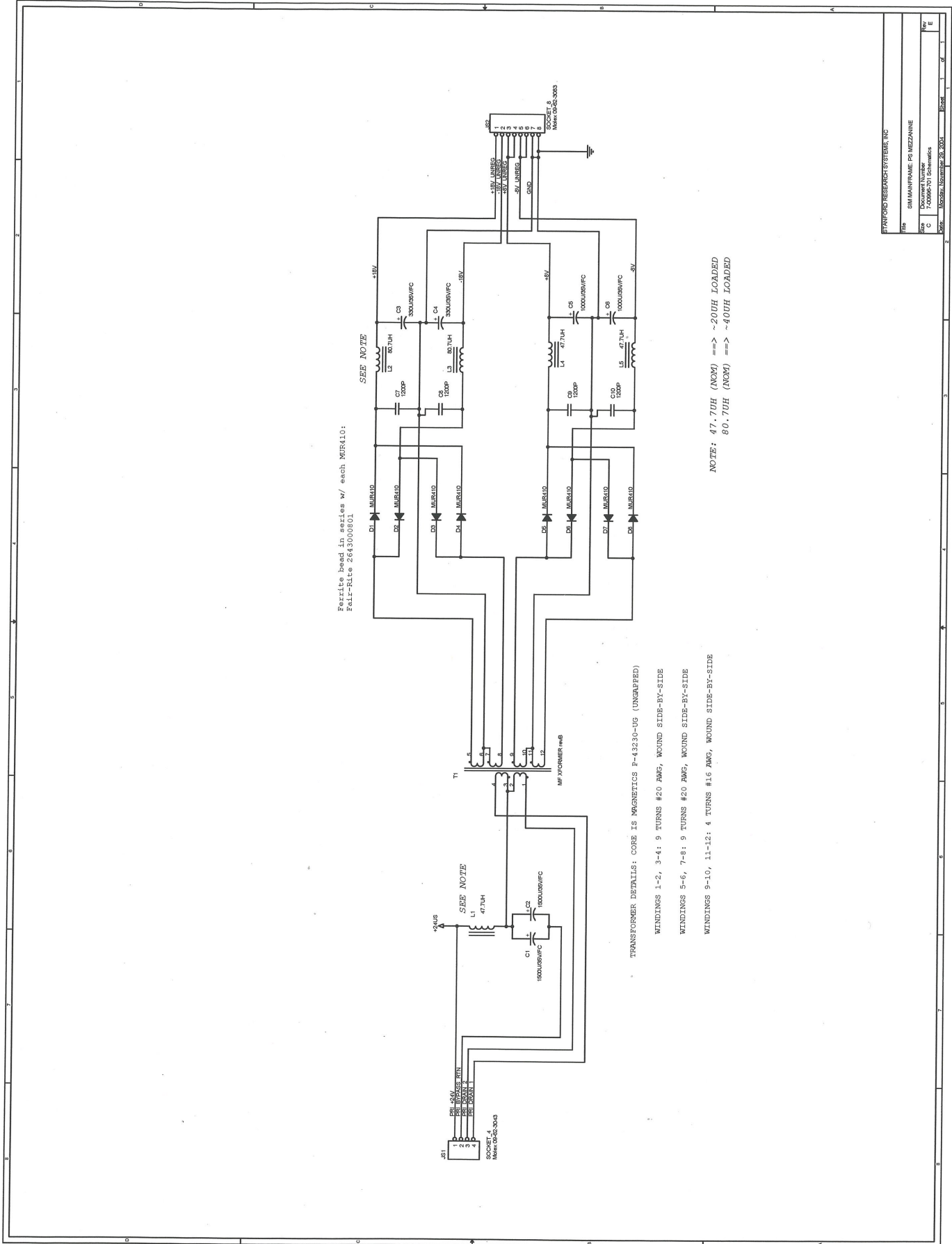
Use Part-# Site 2643013801 bead on each
pin of JP201 except GND pins (7,8)

From PS MEZZANINE BOARD

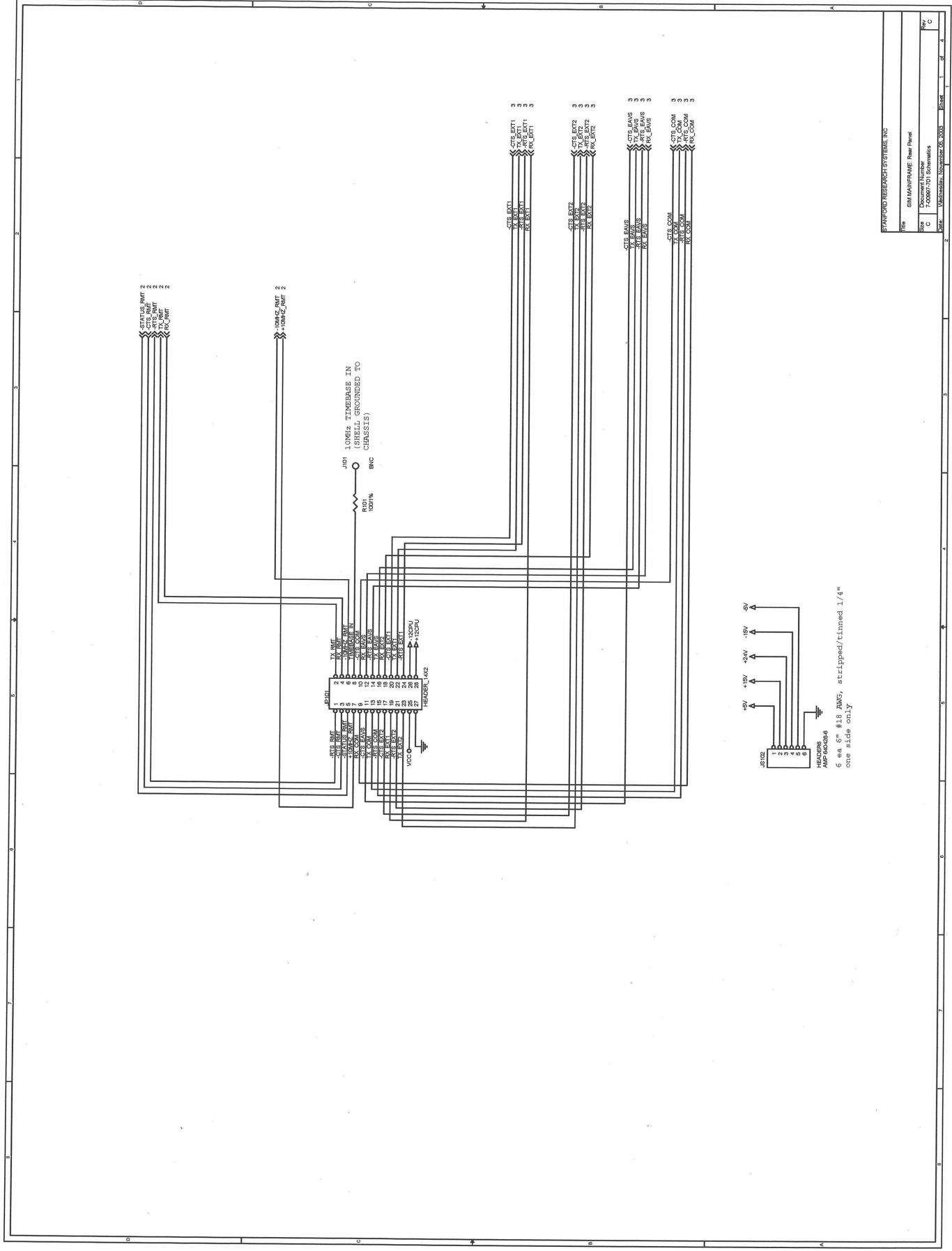


STANFORD RESEARCH SYSTEMS, INC

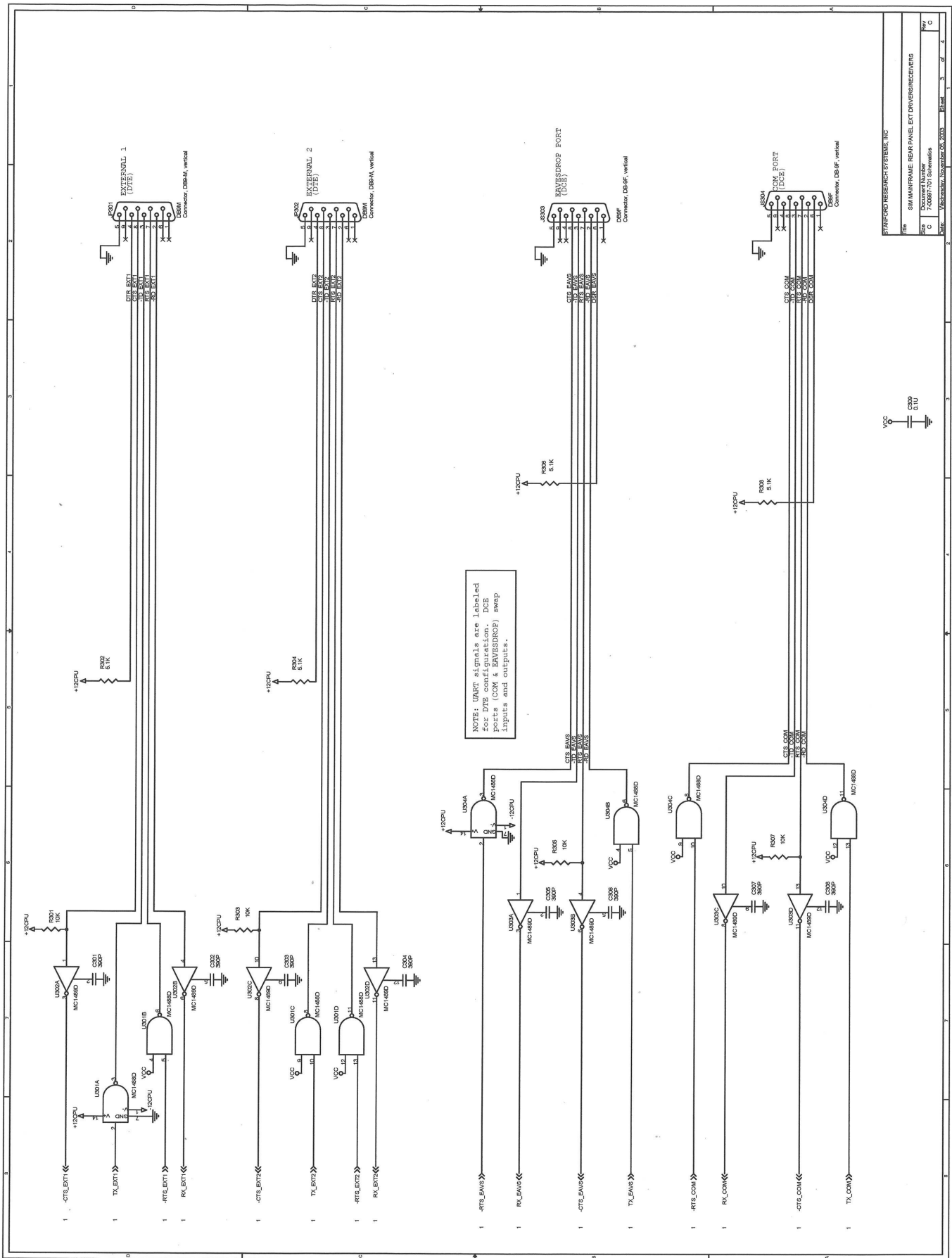
File	SHIMANFRAME PS BOARD - REGULATORS
Doc	Document Number
C	7-00065-701 Schematics
Rev	Revision
1	1
2	2
3	3
4	4
5	5
6	6
7	7
8	8
9	9
10	10
11	11
12	12
13	13
14	14
15	15
16	16
17	17
18	18
19	19
20	20
21	21
22	22
23	23
24	24
25	25
26	26
27	27
28	28
29	29
30	30
31	31
32	32
33	33
34	34
35	35
36	36
37	37
38	38
39	39
40	40
41	41
42	42
43	43
44	44
45	45
46	46
47	47
48	48
49	49
50	50

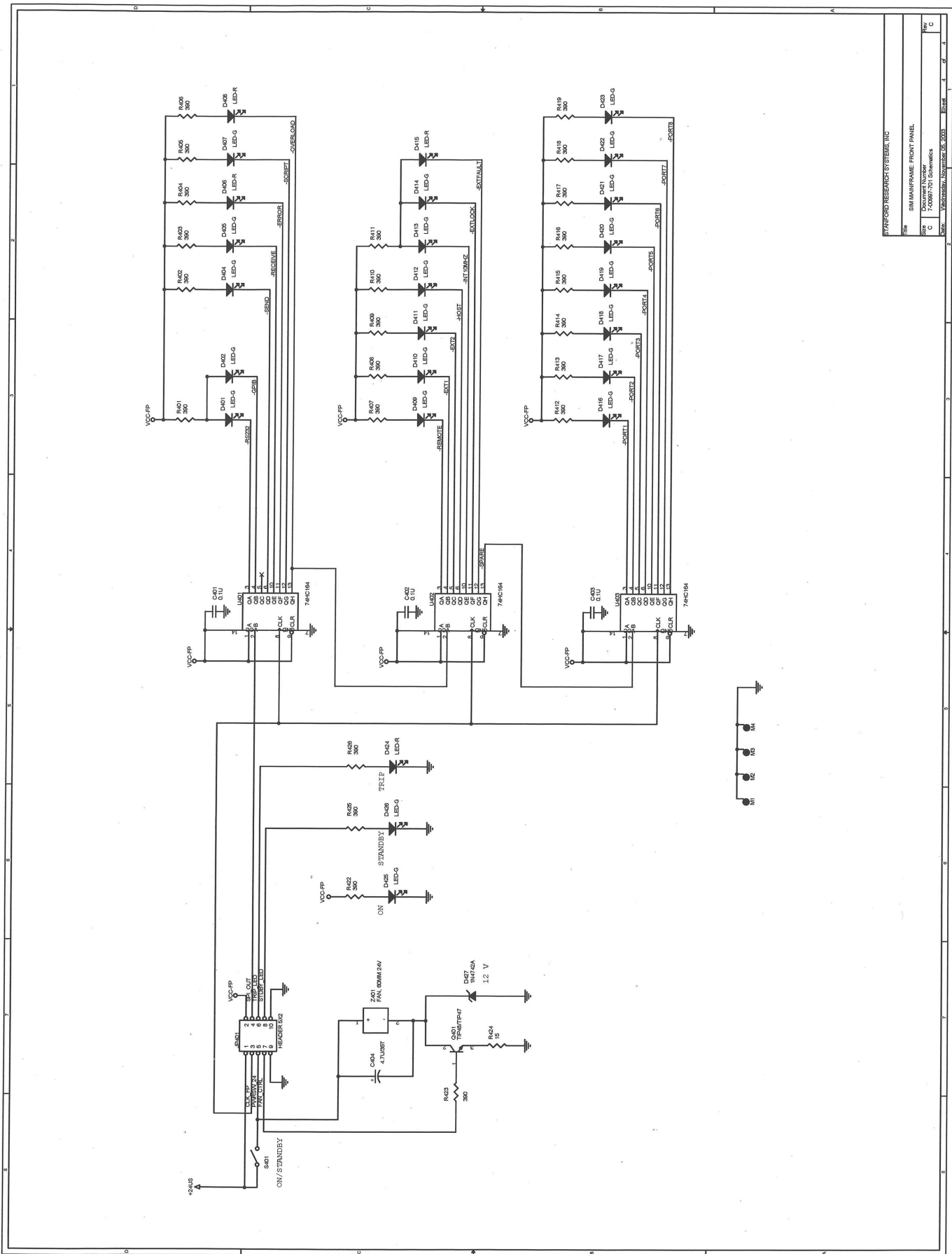


STANFORD RESEARCH SYSTEMS, INC.	
File	SIMMAINFRAME.P01MEZZANINE
Docu-ment Number	7-0096-701 Schematics
Size	C
Rev	E
Date	10/25/83, 10/26/83, 2/8/84



STANFORD RESEARCH SYSTEMS, INC.
 File: SRM/MANFRAME Rear Panel
 Size: 7,006/7/91 Schematics
 Rev: 0
 Date: 11/20/91





SIMPAC/SD RESEARCH SYSTEMS, INC.	
Rev	SIM MAINFRAME FRONT PANEL
Docu. Number	1-00007010-0
Docu. Title	1-00007010-0 Schematics
Rev	1
Docu. No.	1-00007010-0
Rev	1
Docu. No.	1-00007010-0