

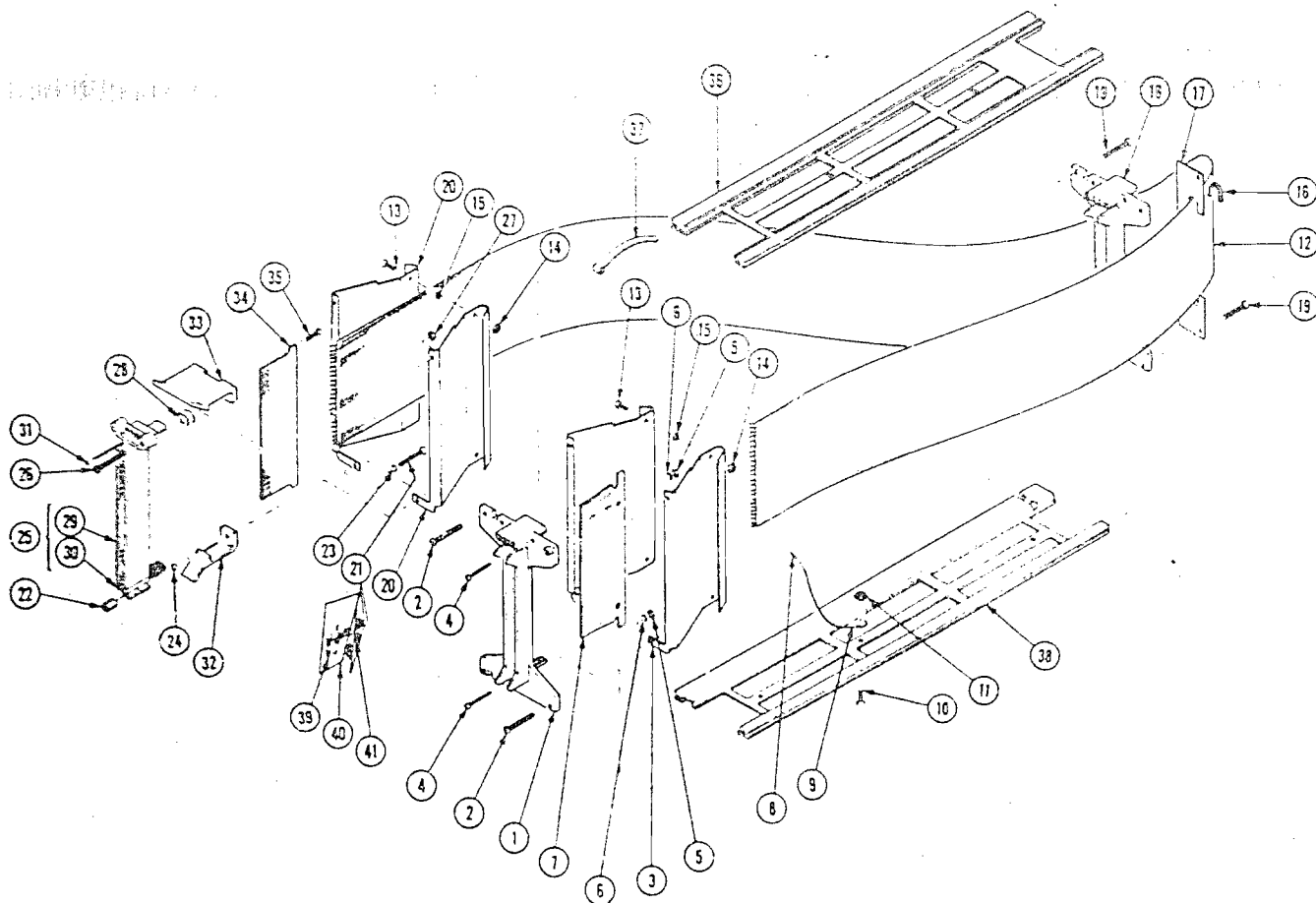
CALIBRATION FIXTURE
Part No. 067-0616-00

Extender latches were added to the flexible extender connector on the Calibration Fixture 067-0616-00. However, neither the extender latches nor the plug-in stop (guide pin) will work with all 7000 series plug-ins. If necessary, remove the latches and/or plug-in stop for use in your application by performing the following:

1. Loosen the two screws (index 13) securing the rear of the circuit board connector shield (index 20).
2. Remove the 4-40 X 0.375 inch screws (index 26), flat washers (index 28), and nuts (index 27) securing the larger upper extender latch (index 33) and remove the latch.
3. Remove the 2-56 X 0.875 inch screw (index 21), lockwasher (index 23), sleeve spacer (index 24), and hex post (index 22) securing the lower extender latch (index 32) and remove the latch.
4. Slide the connector shields (index 20) forward against the receptacle connector body (index 30).
5. Secure the connector shields to the upper connector body using the provided 2-56 X 0.5 inch screws, the two 2-56 X 0.188 inch hex nuts, and the two lockwashers provided as accessories.
6. Secure the connector shields to the lower connector body using the provided 2-56 X 0.5 inch screw, and the hex post (index 22) and lockwasher (index 23) removed previously.
7. Tighten the two screws loosened in step 1.
8. If necessary, remove the plug-in stop (index 31) by pulling straight out with a pair of pliers or drive it out from the rear with a punch. Use care to prevent cracking the connector body.

CAUTION

With the plug-in stop removed, it is possible to reverse the connector when attaching it to a plug-in. To prevent damage, always check for proper connection before applying power.



REPLACEABLE PARTS LIST

Fig. & Index No.	Tektronix Part No.	Serial/Model No. Eff	Dscont	Qty	1	2	3	4	5	Name & Description	Mfr Code	Mfr Part Number
1-1	067-0616-00			1						FIXTURE, CAL: PLUG-IN EXTENDER	80009	067-0616-00
	386-1402-01			1						PANEL, REAR: (ATTACHING PARTS)	80009	386-1402-01
-2	213-0192-00	B010100	B065499	4						SCR, TPG, THD FOR: 6-32 X 0.50 INCH, PNH STL	87308	OBD
	213-0793-00	B065500		4						SCREW, TPG, TF: 6-32 X 0.4375, TAPTITE, FIL	93907	OBD
-3	337-1377-00	B010100	B064379	2						SHIELD, ELEC: CKT BOARD CONN	80009	337-1377-00
	337-1377-01	B064380		2						SHIELD, ELEC: CKT BOARD CONN (ATTACHING PARTS)	80009	337-1377-01
-4	211-0159-00			3						SCREW, MACHINE: 2-56 X 0.375 INCH, PNH STL	87308	OBD
-5	210-0405-00			3						NUT, PLAIN, HEX.: 2-56 X 0.188 INCH, BRS	73743	12157-50
-6	210-0001-00			3						WASHER, LOCK: INTL, 0.092 ID X 0.18" OD, STL	78189	1202-00-00-0541C
	361-0326-00			1						SPACER, SLEEVE: 0.18 ID X 0.25 OD X 0.10" L	80009	361-0326-00
	-----			-						(SPACER REMOVED FROM NEWER INSTRUMENTS)		
-7	388-1760-00			1						CKT BOARD ASSY: EXTENDER	80009	388-1760-00
-8	175-0904-00	B051115		AR						WIRE, ELECTRICAL: STUD, 16 AWG, 150V RMS, BLACK	12703	OBD
-9	210-0201-00	B051115		1						TERMINAL, LUG: 0.12 ID, LOCKING, BRZ TIN PL (ATTACHING PARTS)	86928	OBD
-10	211-0101-00	B051115		1						SCREW, MACHINE: 4-40 X 0.25, 100 DEG, FLH STL	83385	OBD
-11	210-0586-00	B051115		1						NUT, PL, ASSEM WA: 4-40 X 0.25, STL	83385	OBD
-12	175-5348-00			1						CA ASSY, SP, ELEC: 56, 28 AWG STRD, 2, 22 AWG (ATTACHING PARTS)	80009	175-5348-00
-13	211-0008-00			4						SCREW, MACHINE: 4-40 X 0.250, PNH, STL, CD PL	83385	OBD
-14	210-0586-00			4						NUT, PL, ASSEM WA: 4-40 X 0.25, STL	83385	OBD
-15	210-0849-00			4						WSHR, SHOULDERED: 0.11 ID X 0.188" OD, FIBER	83330	2151

Scan by Zenith

Fig & Index No.	Tektronix Part No	Serial Eff	Model No. Dscont	Qty	1	2	3	4	5	Name & Description	Mfr Code	Mfr Part Number
-16	343-0533-00	B051115		1	.					RETAINER, CABLE: PLUG-IN EXTENDER, AL	80009	343-0533-00
-17	348-0171-00	B051115		2	.					GROMMET, PLASTIC: U-SHAPED	80009	348-0171-00
-18	386-1402-02			1	.					PANEL, REAR: (ATTACHING PARTS)	80009	386-1402-02
-19	213-0192-00	B010100	B065499	4	.					SCR, TPG, THD FOR: 6-32 X 0.50 INCH, PNH STL	87308	OBD
	213-0793-00	B065500		4	.					SCREW, TPG, TF: 6-32 X 0.4375, TAPTITE, FIL	93907	OBD
-20	337-1376-00			2	.					SHIELD, ELEC: CKT BOARD CONN (ATTACHING PARTS)	80009	337-1376-00
-21	211-0003-00	B065779		1	.					SCREW, MACHINE: 2-56 X 0.875 INCH, PNH, STL	83385	OBD
-22	129-0157-00	B065779		1	.					POST, ELEC-MECH: 0.23 INCH L X 0.25 INCH HEX	80009	129-0157-00
-23	210-0001-00	B065779		1	.					WASHER, LOCK: INTL, 0.092 ID X 0.18"OD, STL	78189	1202-00-00-0541C
-24	361-0219-00	B065779		1	.					SPACER, SLEEVE: 0.06 L X 0.093 ID, BRS NP	80009	361-0219-00
-25	131-0767-01			1	.					CONNECTOR, RCPT: (ATTACHING PARTS)	80009	131-0767-01
	211-0034-00	B010100	B065778	3	.					SCREW, MACHINE: 2-56 X 0.50 INCH, PNH	83385	OBD
-26	211-0017-00	B065779		2	.					SCREW, MACHINE: 4-40 X 0.375 INCH, PNH STL	83385	OBD
-27	210-0406-00	B065779		2	.					NUT, PLAIN, HEX.: 4-40 X 0.188 INCH, BRS	73743	12161-50
-28	210-0851-00	B065779		4	.					WASHER, FLAT: 0.119 ID X 0.375 INCH OD, STL	12327	OBD
-----	-----			-	.					CONNECTOR INCLUDES:		
-29	200-0950-00			2	.					COVER, ELEC CONN: PLASTIC	80009	200-0950-00
-30	204-0365-01			1	.					CONN BODY, RCPT: PLUG-IN CIRCUIT BOARD	80009	204-0365-01
	131-0726-04			70	.					CONTACT, ELEC:	80009	131-0726-04
-31	105-0224-00			1	.					STOP, PL-IN UNIT: ALUMINUM	80009	105-0224-00
-32	105-0127-02	B065779		1	.					LATCH, EXTENDER: MOLDED PLASTIC	80009	105-0127-02
-33	105-0127-00	B065779		1	.					LATCH, EXTENDER:	80009	105-0127-00
-34	388-1759-00			1	.					CKT BOARD ASSY: EXTENDER (ATTACHING PARTS)	80009	388-1759-00
-35	211-0098-00			2	.					SCR, CAP, SOC HD: 4-40 X 0.375 INCH, STL	000AH	OBD
-36	426-0505-04			1	.					FR SECT, PLUG-IN: TOP	80009	426-0505-04
-37	214-1061-00	B051115		1	.					SPRING, GROUND: FLAT	80009	214-1061-00
-38	426-0499-12			1	.					FR SECT, PLUG-IN: BOTTOM	80009	426-0499-12
STANDARD ACCESSORIES												
-39	211-0034-00			3	.					SCREW, MACHINE: 2-56 X 0.50 INCH, PNH	83385	OBD
-40	210-0001-00			2	.					WASHER, LOCK: INTL, 0.092 ID X 0.18"OD, STL	78189	1202-00-00-0541C
-41	210-0405-00			2	.					NUT, PLAIN, HEX.: 2-56 X 0.188 INCH, BRS	73743	12157-50
	062-1201-01			1	.					DATA SHEET: CALIBRATION FIXTURE	80009	062-1201-01

CROSS INDEX—MFR. CODE NUMBER TO MANUFACTURER

Mfr. Code	Manufacturer	Address	City, State, Zip
000AH	STANDARD PRESSED STEEL CO., UNBRAKO DIV.	8535 DICE ROAD	SANTA FE SPRINGS, CA 90670
12327	FREEWAY CORPORATION	9301 ALLEN DRIVE	CLEVELAND, OH 44125
12703	JUDD WIRE DIV. ELECTRONIZED CHEMICALS CORP.	250 TURNPIKE RD P.O. BOX 390	TURNERS FALLS, MA 01376
73743	FISCHER SPECIAL MFG. CO.	446 MORGAN ST.	CINCINNATI, OH 45206
78189	ILLINOIS TOOL WORKS, INC. SHAKEPROOF DIVISION	ST. CHARLES ROAD	ELGIN, IL 60120
80009	TEKTRONIX, INC.	P O BOX 500	BEAVERTON OR 97077
83330	SMITH, HERMAN H, INC.	812 SNEDIKER AVE.	BROOKLYN, NY 11207
83385	CENTRAL SCREW CO.	2530 CRESCENT DR.	BROADVIEW, IL 60153
86928	SEASTROM MFG. COMPANY, INC.	701 SONORA AVENUE	GLENDALE, CA 91201
87308	N. L. INDUSTRIES, INC., SOUTHERN SCREW DIV.	P. O. BOX 1360	STATESVILLE, NC 28677
93907	TEXTRON INC. CAMCAR DIV	600 18TH AVE	ROCKFORD, IL 61101