





Date: 7-6-79

Change Reference: M35698 REV.

Product: 7L18 EFF SN B020534 REV. 8-9-79

Manual Part No.: 061-1469-02

### DESCRIPTION

#### ELECTRICAL PARTS LIST AND SCHEMATIC CHANGE

CHANGE TO:

A2880	670-4493-01	CKT BOARD ASSY:MOTHER
M2896	149-0046-01	METER, T TOTAL:CIRCUIT BOARDMOUNT,DC
R2896	321-0436-00	RES.,FXD,FILM:340K OHM,1%,0.125W

M2896 and R2896 are located on the MOTHER circuit board assembly and shown on diagram 30 INTERCONNECT DIAGRAM;



Date: 7-3-79 Change Reference: M36223  
Product: 7L18 EFF SN B020665 Manual Part No.: 061-1469-02

DESCRIPTION

ELECTRICAL PARTS LIST CHANGES

CHANGE TO:

CR3148	152-0728-00	SEMICOND DEVICE:SILICON,PIN SWITCH, 5082-3188
CR3150	152-0728-00	SEMICOND DEVICE:SILICON,PIN SWITCH, 5082-3188
CR3152	152-0728-00	SEMICOND DEVICE:SILICON,PIN SWITCH, 5082-3188
CR3154	152-0728-00	SEMICOND DEVICE:SILICON,PIN SWITCH, 5082-3188
CR3156	152-0728-00	SEMICOND DEVICE:SILICON,PIN SWITCH, 5082-3188
CR3158	152-0728-00	SEMICOND DEVICE:SILICON,PIN SWITCH, 5082-3188
CR3170	152-0728-00	SEMICOND DEVICE:SILICON,PIN SWITCH, 5082-3188
CR3172	152-0728-00	SEMICOND DEVICE:SILICON,PIN SWITCH, 5082-3188
CR3174	152-0728-00	SEMICOND DEVICE:SILICON,PIN SWITCH, 5082-3188
CR3176	152-0728-00	SEMICOND DEVICE:SILICON,PIN SWITCH, 5082-3188
CR3178	152-0728-00	SEMICOND DEVICE:SILICON,PIN SWITCH, 5082-3188
CR3179	152-0728-00	SEMICOND DEVICE:SILICON,PIN SWITCH, 5082-3188

The above parts are located on the VR AMPLIFIER circuit board assembly and shown on diagram 6 VARIABLE RESOLUTION.



Product: 7L18061-1469-02

CHANGE	DESCRIPTION
M36593	EFF: SN B010440
ADD:	
CR1546	152-0141-02 SEMICOND DVC, DI:SW,SI,30V,50NA @ 30V
CR1548	152-0141-02 SEMICOND DVC, DI:SW,SI,30V,50NA @ 30V
Add a diode CR1546 from pin 4 to pin 3 of U1545, cathode to pin 4. Add a diode CR1548 from pin 11 to pin 8 of U1545, cathode to pin 11. Both CR1546 and CR1548 are added to the HORIZONTAL circuit board assembly. U1545 is shown on DIAGRAM <span style="border: 1px solid black; padding: 2px;">11</span> HORIZONTAL SWEEP.	
M36730	EFF: SN B020625
REMOVE:	
CR3140	152-0153-00 SEMICOND DVC, DI:SW,SI,10V,50MA
CR3142	152-0153-00 SEMICOND DVC, DI:SW,SI,10V,50MA
CR3144	152-0153-00 SEMICOND DVC, DI:SW,SI,10V,50MA
CR3146	152-0153-00 SEMICOND DVC, DI:SW,SI,10V,50MA
Remove CR3140, CR3142, CR3144 and CR3146 from the VR AMPLIFIER circuit board assembly and shown on DIAGRAM <span style="border: 1px solid black; padding: 2px;">6</span> VARIABLE RESOLUTION.	
PILOT CHANGE #40	
CHANGE TO:	
C3653	283-0176-00 CAP, FXD, CER DI:0.0022UF,20%,50V

Faint, illegible text at the top of the page, possibly a header or title.





Date: 3-12-80 Change Reference: M37111

Product: 7L18 SPECTRUM ANALYZER INTERIM SERVICE Manual Part No.: 061-1469-02

DESCRIPTION

EFF SN B020600

REPLACEABLE ELECTRICAL PARTS AND SCHEMATIC CHANGES

ADD:

R2835          317-0510-00          RES., FXD, CMPSN: 51 OHM, 5%, 0.125W

R2835 is added in series between C2833 and ground; located on the

COAX BAND RESONATOR circuit board assembly and shown on diagram 3

510 MHz IF AMPLIFIER.



DESCRIPTION


EFF SN B020595

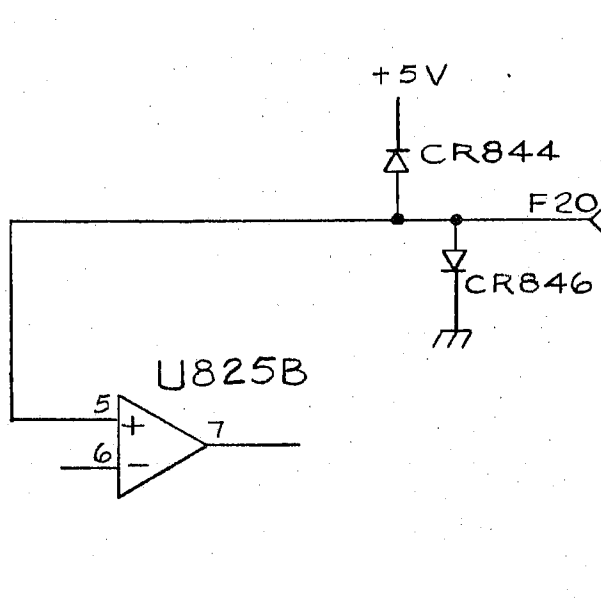
ELECTRICAL PARTS LIST AND SCHEMATIC CHANGES

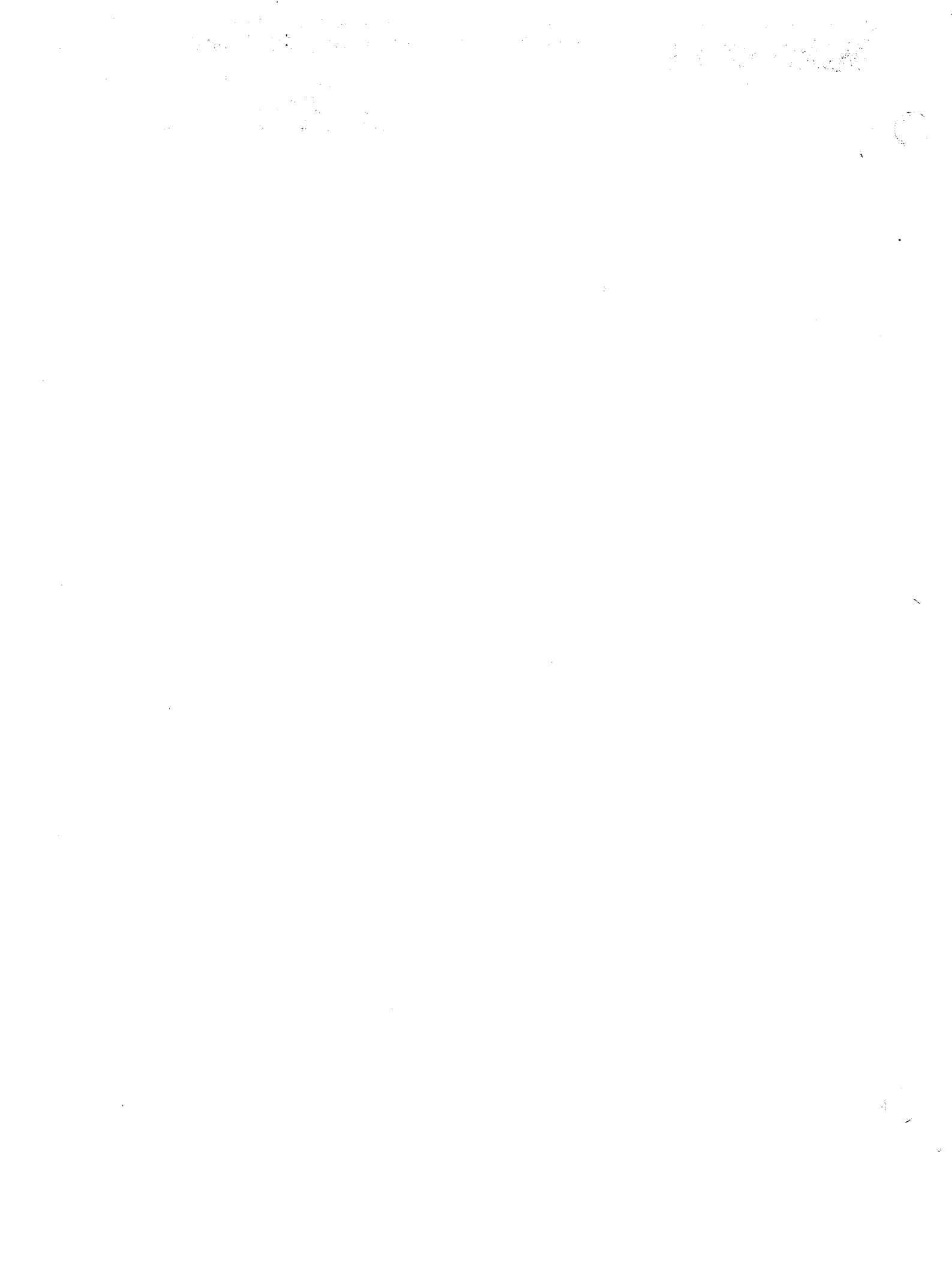
ADD:

CR844 152-0141-02 SEMICOND DEVICE:SILICON,30V,150MA

CR846 152-0141-02 SEMICOND DEVICE:SILICON,30V,150MA

DIAGRAM  VIDEO AMPLIFIER - Partial





Date: 1-7-80 Change Reference: M38597

Product: 7L18 Manual Part No.: 061-1469-01

DESCRIPTION

EFF SN B020625

ELECTRICAL PARTS LIST AND SCHEMATIC CHANGES

ADD:

R2870      315-0102-00      RES., FXD, CMPSN:1K OHM, 5%, 0.25W

DIAGRAM  INTERCONNECT DIAGRAM

R2870 is added in series between the B15 and Pin 5, P2870 line.



Date: 10-8-80

Change Reference: C4/1080

Product: 7L18 SPECTRUM ANALYZER INTERIM SERVICE

Manual Part No.: 061-1469-02

DESCRIPTION

REPLACEABLE ELECTRICAL PARTS CHANGES

ADD:

R5A/B

311-1878-00

RES.,VAR,WW:PNL, 2 X 2 K OHM, 1W, LINEAR

R5A/B are shown on diagram 28 FRONT PANEL FUNCTIONS.

