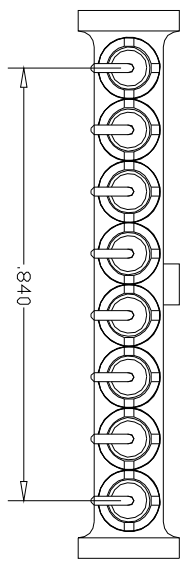
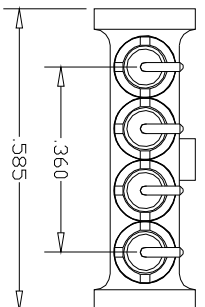
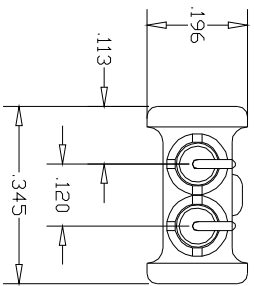
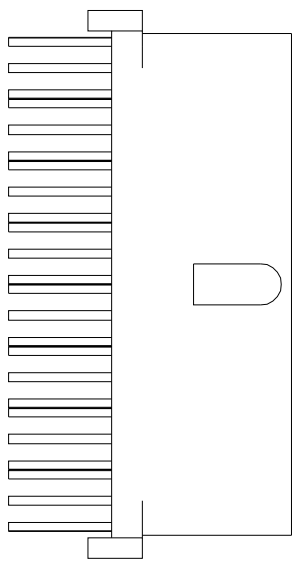
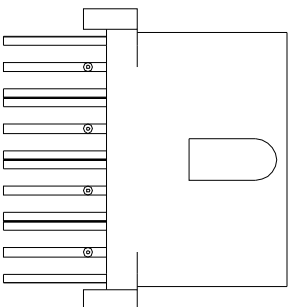
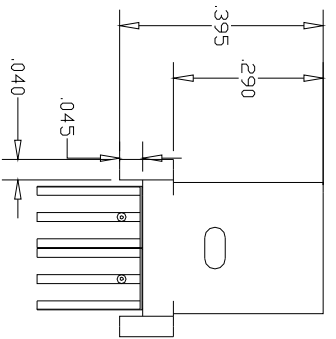
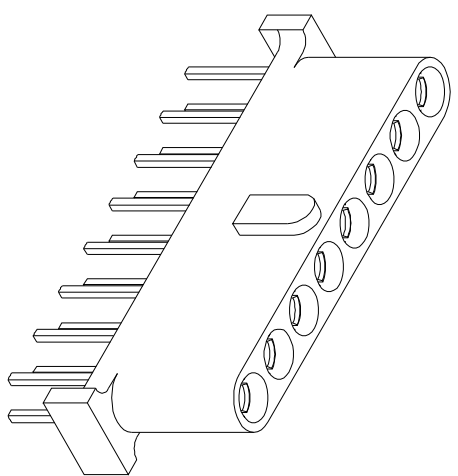
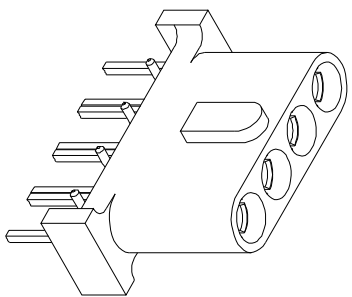
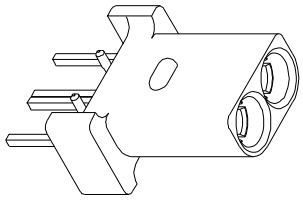


THE INFORMATION CONTAINED IN THIS DRAWING IS THE SOLE PROPERTY OF W.L. GORE & ASSOCIATES, INC. ANY REPRODUCTION IN PART OR WHOLE WITHOUT THE WRITTEN PERMISSION OF W.L. GORE & ASSOCIATES, INC. IS PROHIBITED.



REV.	DESCRIPTION	DATE
C	ADDED NOTE 3.	6/12/06
D	ADDED SHEET 2 FOOTPRINTS.	11/12/07

NOTES:
1. "X" REFERENCE NO. TABLE:

A	- 2 POSITION
C	- 4 POSITION
G	- 8 POSITION

2. "Y" REFERENCE TABLE

A	- SIGNAL AWAY FROM KEY
K	- SIGNAL TOWARDS KEY

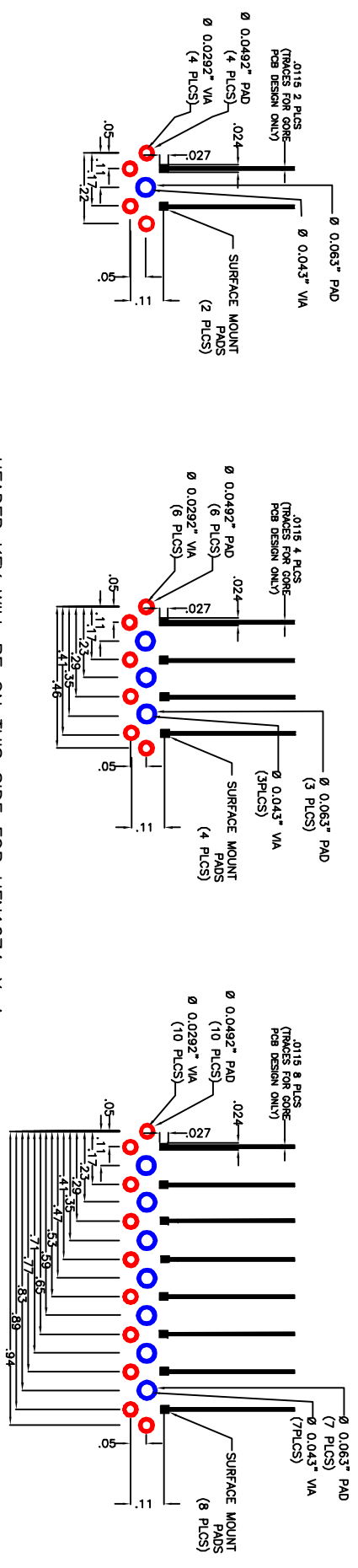
3. IF PRESENT, ANY ADDITIONAL DESIGNATION AFTER THE PART NUMBER AS SHOWN IN THE TITLE BLOCK <HFN1074-X-Y> IS DESCRIBED IN SPECIFICATION HF6891.

CHECKS DRAWING SECURED		CAD GENERATED DRAWING.		W.L. Gore & Associates, Inc.	
DATE	BY	DATE	BY	402 Viewe's Way	0120° PITCH UHD HEADER
12/19/2000	PAUL SCHEHM	12/19/2000	PAUL SCHEHM	Elkton, MD 21921	
APPROVALS		CHECKED		REV.	
DATE	BY	DATE	BY	1	D
12/19/2000	PAUL SCHEHM	04/01/2005	F BECKDUS	2	D
MATERIAL ASSEMBLY		FINISH		SHEET NO.	
N/A		N/A		20	
MFG ENG		MFG ENG		PART NO.	
SolidWorks file		SolidWorks file		HFN1074-X-Y	
DO NOT SCALE DRAWING		DO NOT SCALE DRAWING		SHEET 2	

THE INFORMATION CONTAINED IN THIS DRAWING IS THE SOLE PROPERTY OF W.L. GORE & ASSOCIATES, INC. ANY REPRODUCTION IN PART OR WHOLE WITHOUT THE WRITTEN PERMISSION OF W.L. GORE & ASSOCIATES, INC. IS PROHIBITED.

REV.	REVISIONS DESCRIPTION	DATE
SEE SHEET 1		

HEADER KEY WILL BE ON THIS SIDE FOR HFN1074-X-K



HEADER KEY WILL BE ON THIS SIDE FOR HFN1074-X-A

- NOTES:
- ALL VIAS ARE FINISHED PLATED DIMENSIONS
 - LAYOUTS SHOWN ARE RECOMMENDED FOOTPRINTS ONLY
 - SUBJECT TO REVISION WITHOUT NOTICE. CONTACT W.L. GORE & ASSOCIATES, INC. TO CONFIRM CURRENT DRAWING REVISION

UNLESS OTHERWISE SPECIFIED DIMENSIONS ARE IN INCHES TOLERANCES ARE: DECIMALS X .005 XX ±.005 XXX ±.010 XXXX ±.015 All unmarked radii = X	CAD GENERATED DRAWING. DO NOT MANUALLY UPDATE.	APPROVALS	DATE	W.L. Gore & Associates, Inc. 402 Vieve's Way Elkton, MD 21921
MATERIAL ASSEMBLY	CHECKED	RESP' ENG	F BECKOUS	04/01/2005
FINISH	N/A	MFG ENG		
DO NOT SCALE DRAWING	SolidWorks file	SIZE	DATE	REV
		B	HFN1074-X-Y	D
				SHEET 2 OF 2