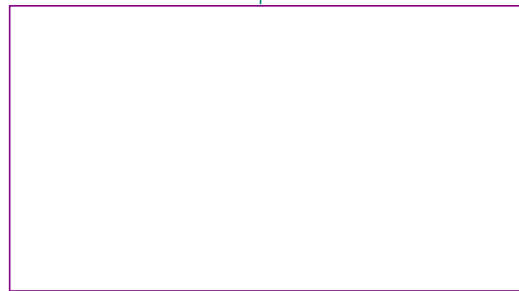


Sheet: TDS3000 connector, RTC and ESP32



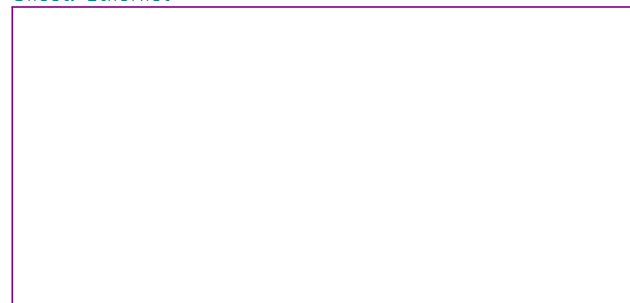
File: file60845A1D.sch

Sheet: RS232 and USB ports



File: file60846172.sch

Sheet: Ethernet



File: file5FA38E5B.sch

Sheet: /
File: TDS3K_plugin_with_RTC_and_Serial.sch

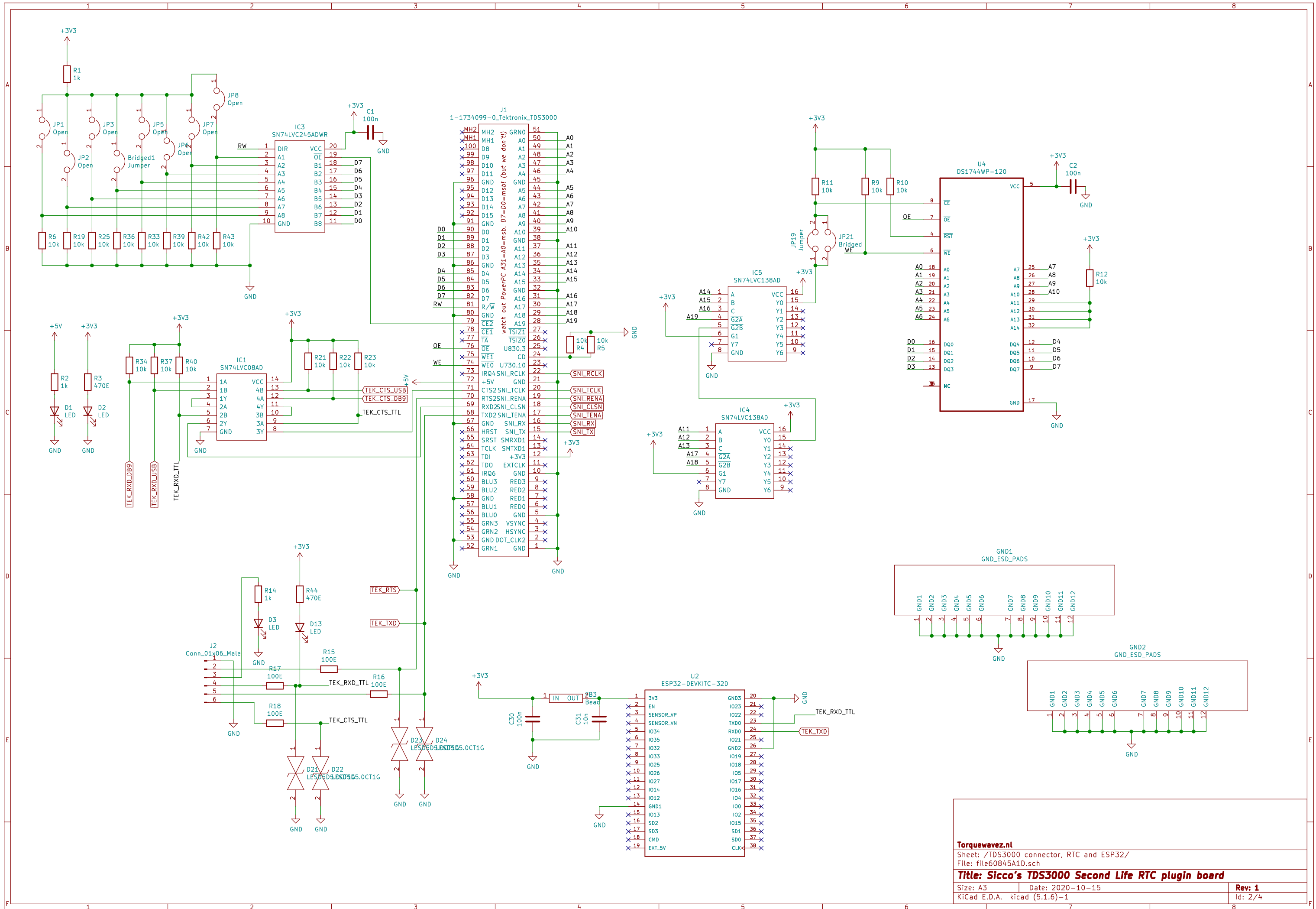
Title: Sicco's TDS3000 Second Life RTC plugin board

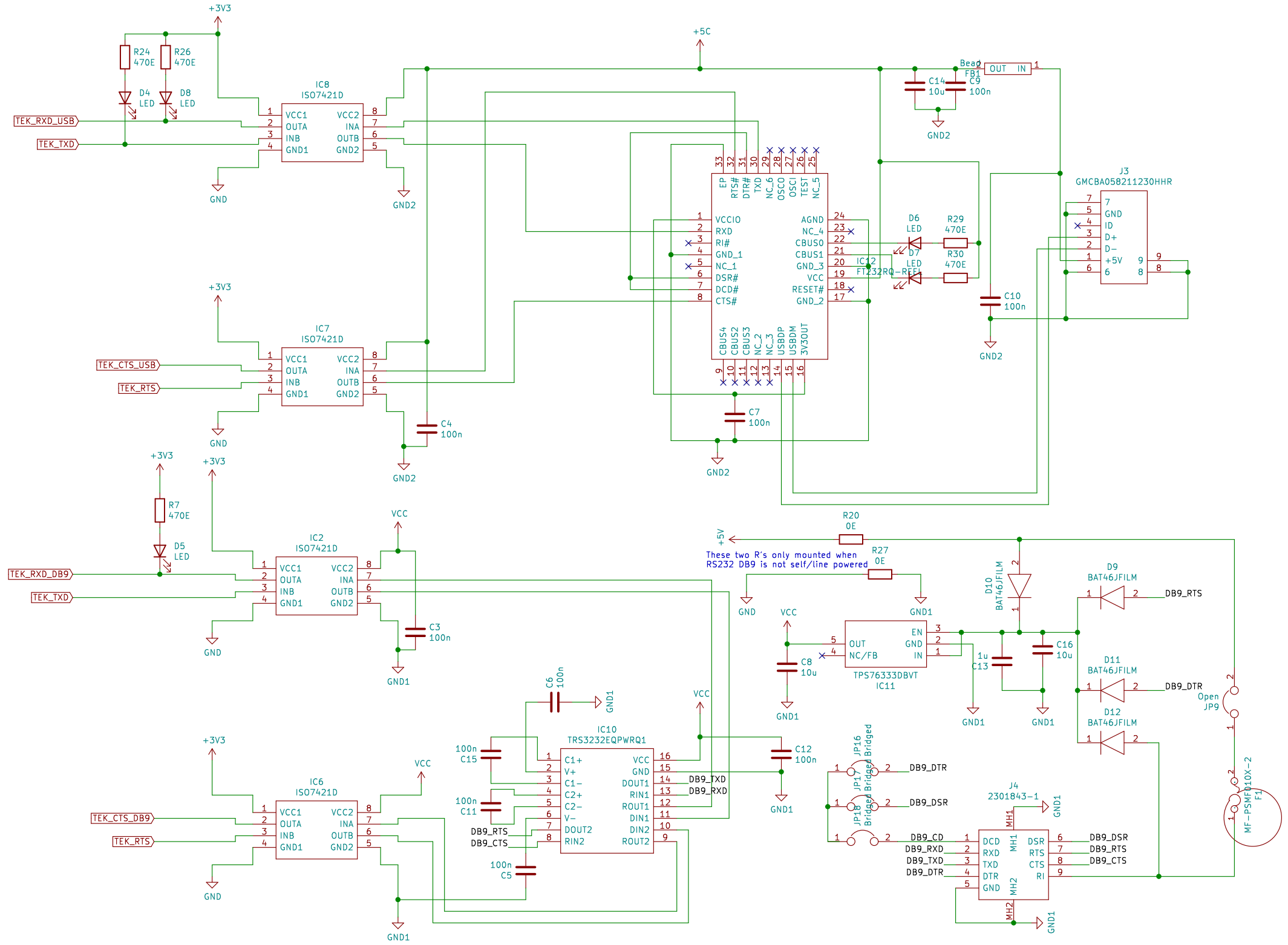
Size: A4 Date: 2020-10-15

Rev: 1

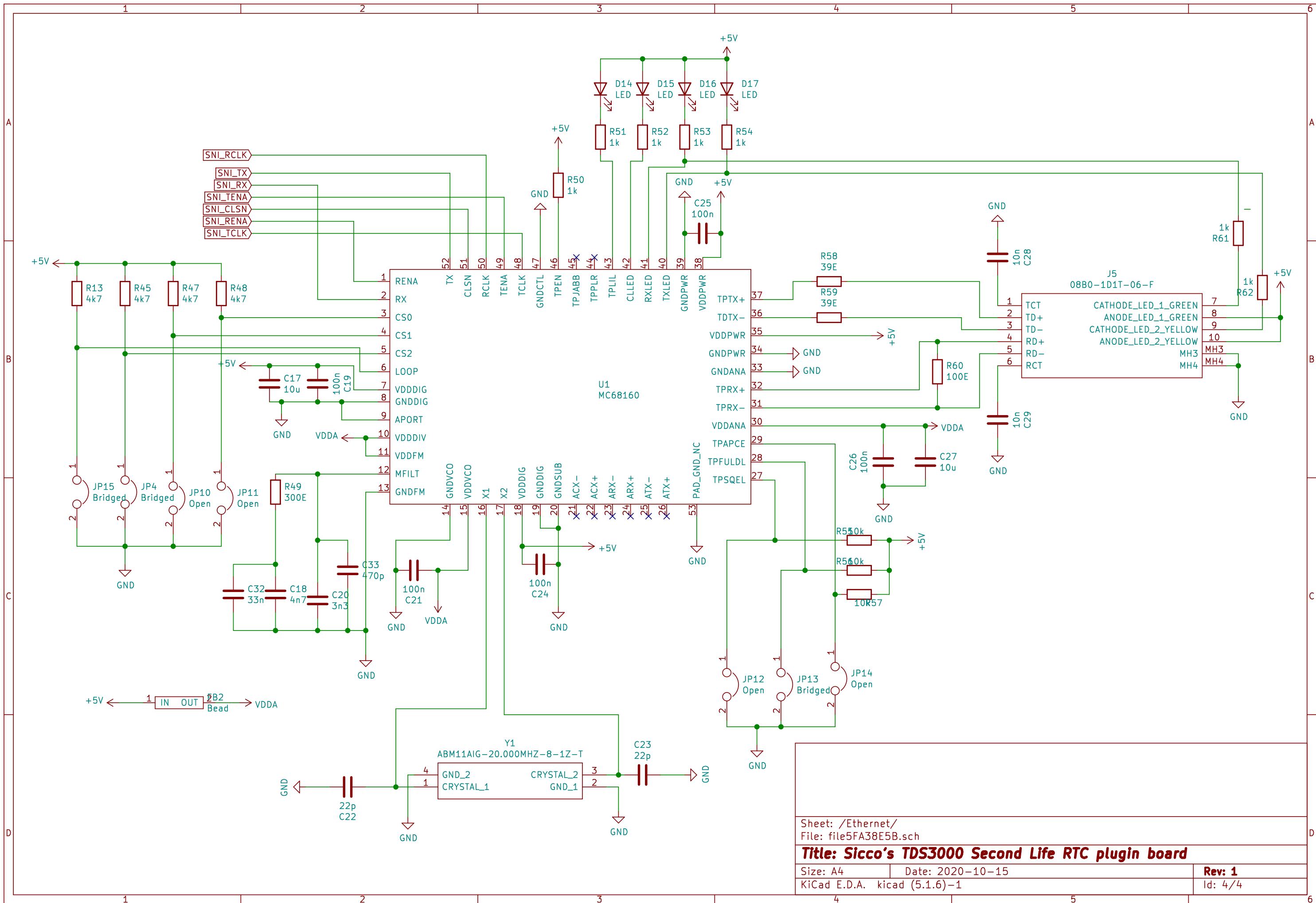
KiCad E.D.A. kicad (5.1.6)-1

Id: 1/4





Sheet: /RS232 and USB ports/
 File: file60846172.sch
Title: Sicco's TDS3000 Second Life RTC plugin board
 Size: A3 Date: 2020-10-15 Rev: 1
 KiCad E.D.A. kicad (5.1.6)-1 Id: 3/4



Sheet: /Ethernet/
 File: file5FA38E5B.sch
Title: Sicco's TDS3000 Second Life RTC plugin board
 Size: A4 Date: 2020-10-15 **Rev: 1**
 KiCad E.D.A. kicad (5.1.6)-1 Id: 4/4