

TDS Hard Copy

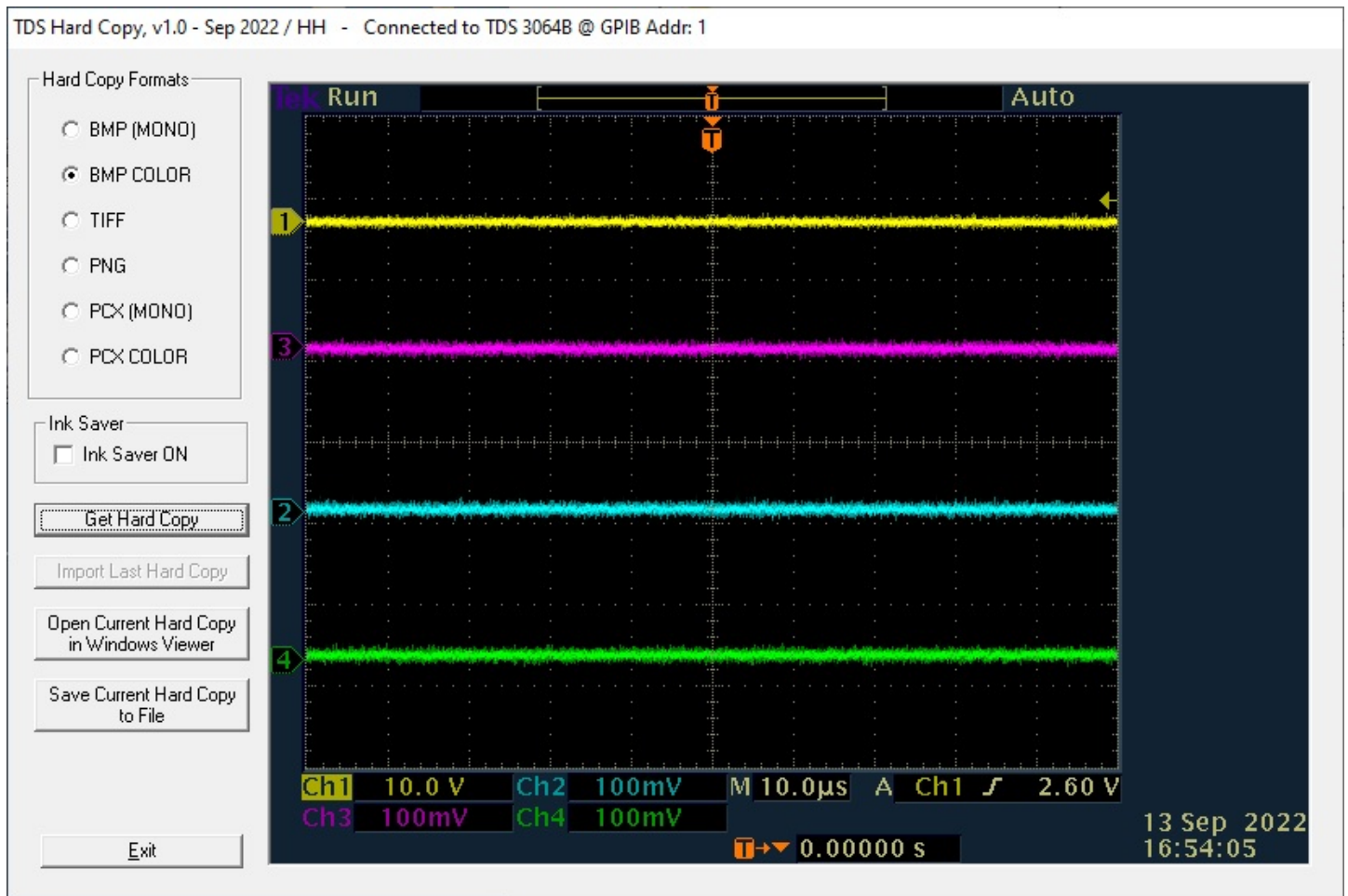
This program inputs a copy of the current screen from any older (non Windows) Tektronix TDS scopes. The program will automatically find any TDS on the bus as long as its address is higher than 0. If more than one TDS is present on the bus the one with lowest address will be selected or if the program is started using a command line switch i.e. TDS HC.exe /sel any TDS on the bus can be manually selected. Once the TDS has been identified the program configures itself accordingly.

Sep 14, 2022 - **New version 1.0**

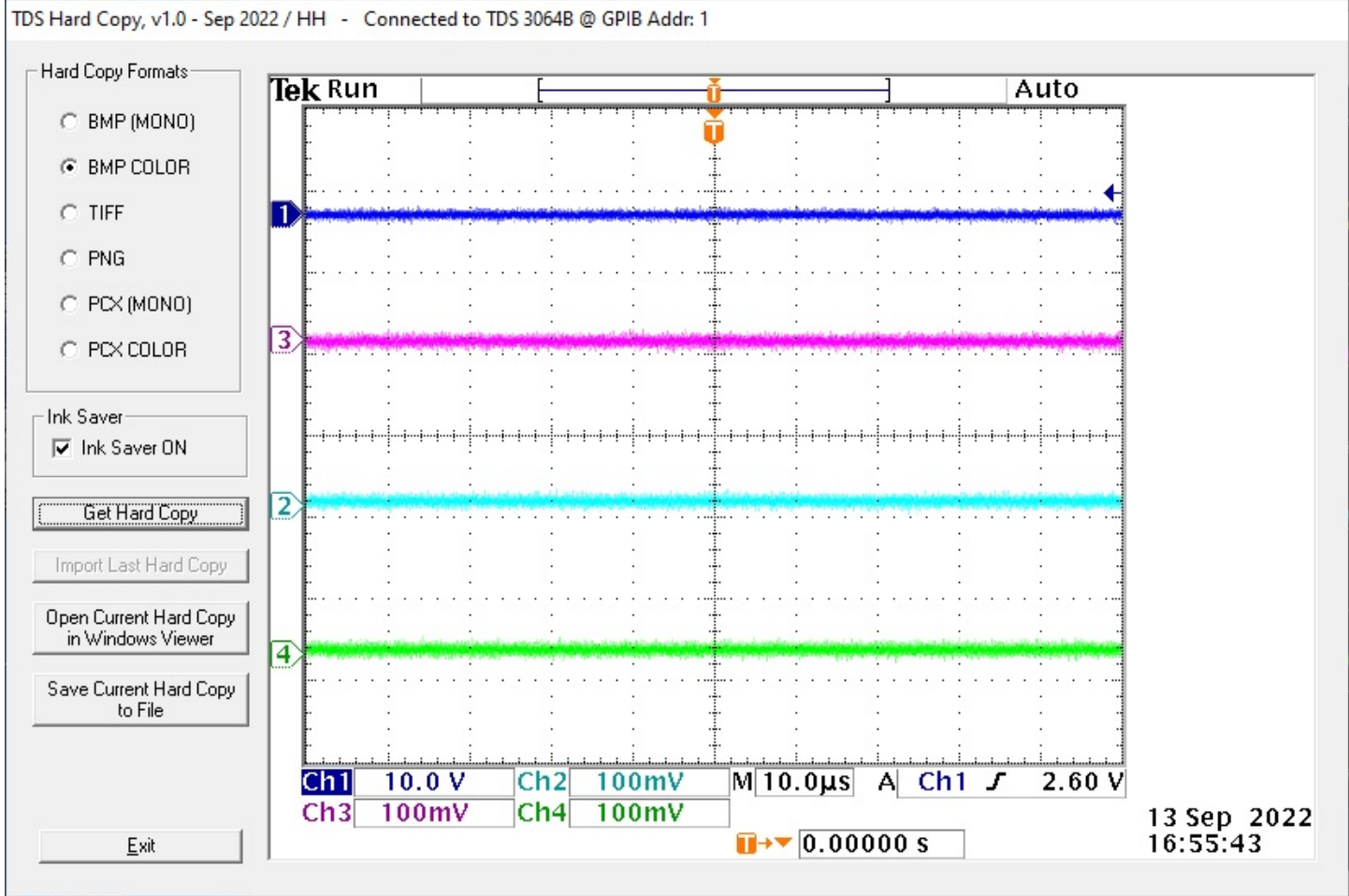
Version 1.0

Initial version.

Here's a screen shot of a color Hard Copy from a TDS 3064B:

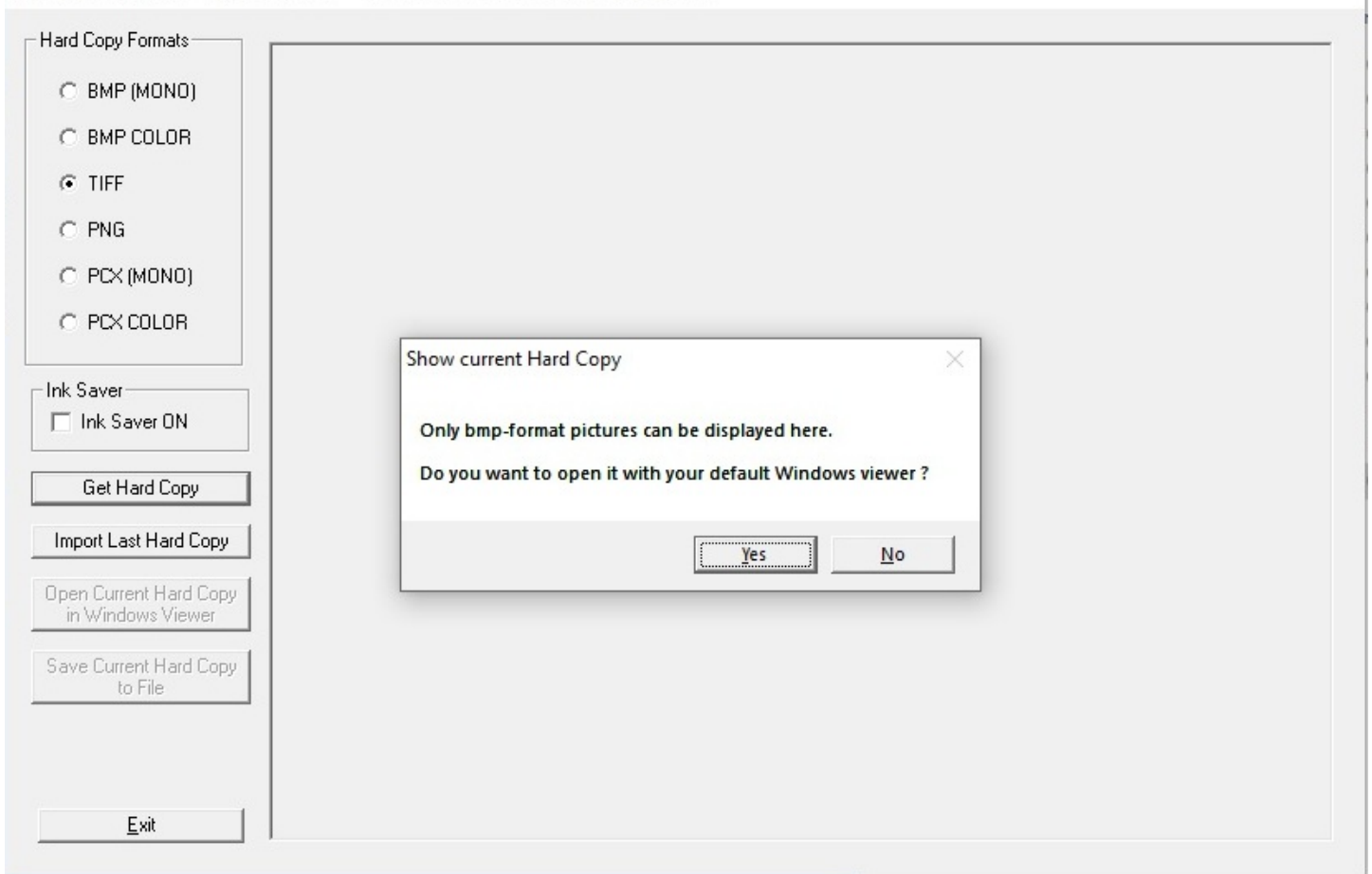


And the same with Ink Saver active:



And one using TIFF format:

TDS Hard Copy, v1.0 - Sep 2022 / HH - Connected to TDS 3064B @ GPIB Addr: 1



Unfortunately the picture box in VB6 can only show bmp-files so for any other file format the option of open the file in the default Windows picture viewer pops up instead of showing the file.

Hard Copy Formats: Select file format.

Buttons:

Get Hard Copy: Import a Hard Copy in the selected format.

Import Last Hard Copy: Import the Hard Copy file that was active when the program was last terminated.

Open Current Hard Copy in Windows Viewer: Opens the currently loaded or imported Hard Copy in the default Windows picture viewer.

Save Current Hard Copy to File: Saves the currently loaded or imported Hard Copy to selected folder and file.

I have not included any printing option since it could be done just as easy by first open the Hard Copy manually in the default Windows picture viewer and print from it. Most viewers also has the option to save the picture in a different format.

You must have a NI GPIB card with the proper drivers installed. [Find and download National Instruments GPIB card drivers here.](#)

It is expected to work on any PC/win OS (not 3.1) with a correctly installed and working NI card.

[Download TDS Hardcopy here](#)

[Email me with comments](#) /Håkan

[Home](#) / [Go back](#)