

General Purpose

Type	Drg No	I _p (mA)	I _{v,max} (mA)	C _{max} (pF)	V _p (mV)
1N2939		46 1.0 +/-10%		0.14	15 65 typ
1N2939A		46 1.0 +/-2.5%		0.14	10 60 +/-10
1N2940		46 1.0 +/-10%		0.22	10 65 typ
1N2940A		46 1.0 +/-2.5%		0.22	7 60 +/-10
1N2941		46 4.7 +/-10%		1.04	50 65 typ
1N2941A		46 4.7 +/-2.5%		1.04	30 60 +/-10
1N2969		46 2.2 +/-10%		0.48	25 65 typ
1N2969A		46 2.2 +/-2.5%		0.48	15 60 +/-10
1N3149		46 10.0 +/-10%		2.2	90 65 typ
1N3149A		46 10.0 +/-2.5%		2.2	50 60 +/-10
1N3150		46 22.0 +/-10%		4.8	150 65 typ

1N3712 (TD-1)	47	1.0 +/-10%	0.18		10 65 typ
1N3713 (TD-1A)	47	1.0 +/-2.5%	0.14		5 65 +/-7
1N3714 (TD-2)	47	2.2 +/-10%	0.48		25 65 typ
1N3715 (TD-2A)	47	2.2 +/-2.5%	0.31		10 65 +/-7
1N3716 (TD-3)	47	4.7 +/-10%	1.04		50 65 typ
1N3717 (TD-3A)	47	4.7 +/-2.5%	0.6		25 65 +/-7
1N3718 (TD-4)	47	10.0 +/-10%	2.2		90 65 typ
1N3719 (TD-4A)	47	10.0 +/-2.5%	1.4		50 65 +/-7
1N3720 (TD-5)	47	22.0 +/-10%	4.8		150 65 typ
1N3721 (TD-5A)	47	22.0 +/-2.5%	3.1		100 65 +/-7
TD-9	47	0.5 +/-10%	0.1		5 65 typ

High Speed (Drg no 48)

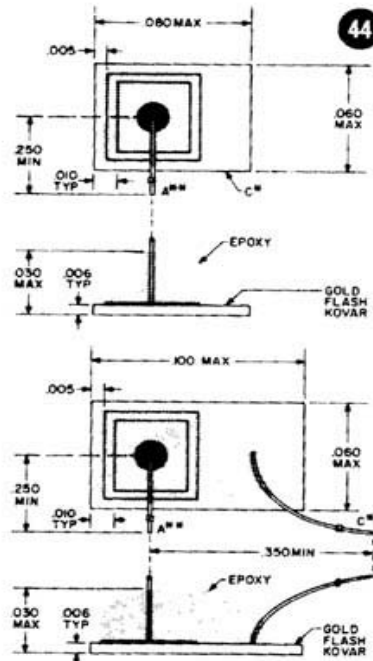
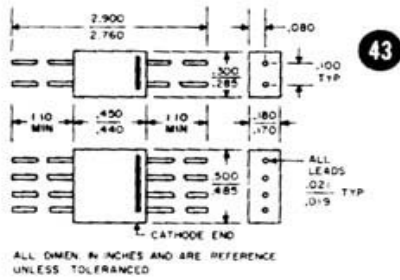
Type	I _p (mA)	I _{v,max} (mA)	C _{max} (pF)	V _p (mV)
TD-251	2.2 +/-10%	0.31		3 70 typ
TD-251A	2.2 +/-10%	0.31		1 110 max
TD-252	4.7 +/-10%	0.6		4 80 typ
TD-252A	4.7 +/-10%	0.6		1 120 max
TD-253	10.0 +/-10%	1.4		9 75 typ
TD-253A	10.0 +/-10%	1.4		5 80 typ
TD-253B	10.0 +/-10%	1.4		2 120 max
TD-254	22 +/-10%	3.8		18 90 typ
TD-254A	22 +/-10%	3.8		4 120 max
TD-255	50 +/-10%	8.5		25 110 typ
TD-255A	50 +/-10%	8.5		5 130 typ
TD-256	100 +/-10%	17.5		35 150 typ
TD-256A	100 +/-10%	17.5		6 180 typ

Microwave (Drg no 49)

Type	I _p (typ) mA	-R (ohms)	C(max) (pF)	Rs(max) (ohms)	fT0 (GHz)
TD-401	1.85	60-80	3.5	3	5
TD-402	1.85	60-80	1.8	4	10
TD-403	1.85	60-80	1	5	15
TD-404	1.85	60-80	0.75	5	20
TD-405	1.85	60-80	0.6	6	25
TD-406	1.85	60-80	0.48	6	30
TD-407	1.85	60-80	0.37	6	35
TD-408	1.85	60-80	0.3	6	40

Back Diodes

Type	Drg No	I _p (max) (mA)	C _{max} (pF)	VR1	VR2	
BD-1		50	1	20	440	440
BD-2		50	0.5	10	420	465
BD-402		49	0.5	3	420	465
BD-3		50	0.2	10	400	465
BD403		49	0.2	1	400	465
BD-4		50	0.1	10	380	465
BD-404		49	0.1	1	380	465
BD-5		50	0.05	10	350	465
BD-405		49	0.05	1	350	465
BD-6		50	0.02	10	330	465
BD-406		49	0.02	2	330	465
BD-7		50	0.01	10	300	465
1N4090		48	0.2	105	430	465



DIMENSIONS JEDEC OUTLINE

NOTE 1: Lead diameter is zone between .050 and 2.500 mils. Between 2.500 and 2.750 mils max. of .021 is held.
NOTE 2: Leads having max. diameter of .0191 measured in gaging zone shall be within .007 of 1.5 to a maximum width of .000 below the seating zone.
NOTE 3: Measured from the actual device.

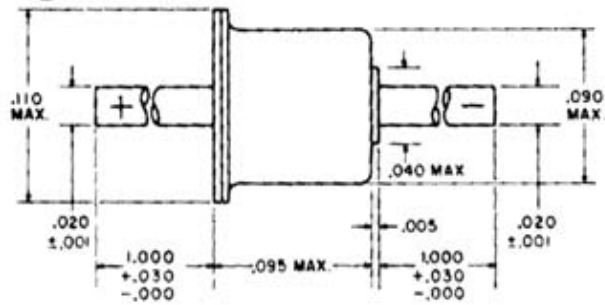
PINS 1 AND 2 ARE ELECTRODES CONNECTED INTERNALLY TO REDUCED INDUCTANCE. PIN 3 ELECTRODE CONNECTED TO HEADERS.

ALL DIMEN IN INCHES REFERENCE UNLESS T

DIMENSIONS WITHIN

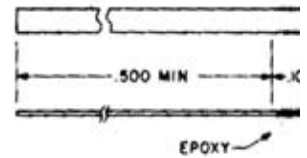
WHITE DOT INDICATES CATHODE-

47



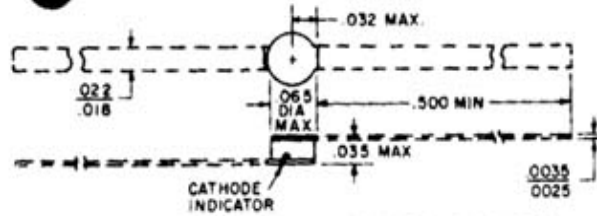
ALL DIMEN. IN INCHES AND ARE REFERENCE UNLESS TOLERANCED.

WHITE DOT INDICATES CATHODE-



ALL DIMENSIONS IN INCHES AND ARE REFERENCE UNLESS TOLERANCED

49



1. ALL DIMENSIONS ARE IN INCHES AND REFERENCE UNLESS TOLERANCED
2. UNIT WILL BE SUPPLIED WITH LEADS WHEN SPECIFIED. WHEN LEADS ARE SUPPLIED, THE DIMENSIONS ARE WITHIN JEDEC DO-20 OUTLINE

R_{smax} (ohms) -G (mhos x 10⁻³) fT₀ (GHz)

4 6.6 typ	2.2
4 6.6 typ	2.6
4 6.6 typ	2.2
4 6.6 typ	2.6
2 30 typ	2.6
2 30 typ	3.9
3 16 typ	2.5
3 16 typ	3.3
1.5 60 typ	2.6
1.5 60 typ	3.1
1 100 typ	2.2

General purpose switching, oscillator, amplifier and convertor circuits. Nominal series inductance, La is 4nH. TO18 package

4 8 typ	2.3
4 8.5 +/-1	3.2
3 18 typ	2.2
3 19 +/-3	3
2 40 typ	1.8
2 41 +/-5	3.4
1.5 80 typ	1.6
1.5 80 +/-10	2.8
1 180 typ	1.6
1 180 +/-30	2.6
6 4.0 typ	1.3

General purpose switching, oscillator, amplifier and convertor circuits. Miniature axial package with series inductance, La 0.5nH. MIL qualified units available for the "A" versions.

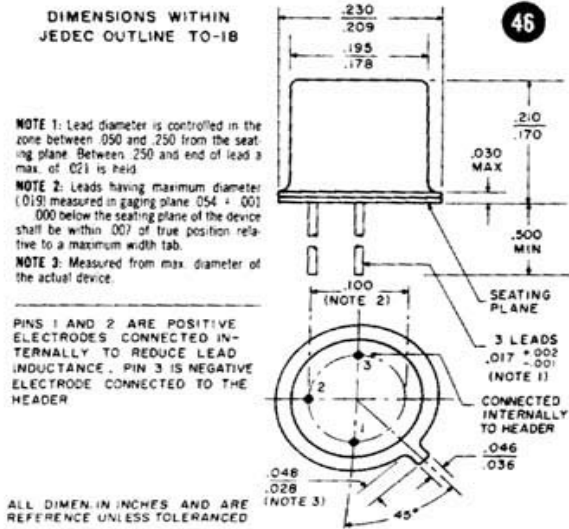
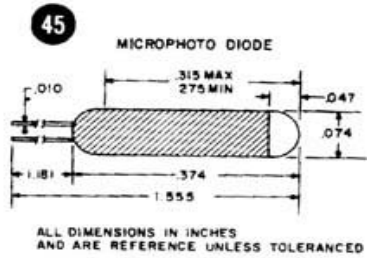
Vfs	Vf	Rs(typ) (ohms)	tr (ps)
420 min	500-650	5	430
420 min	500-650	7	160
435 min	500-650	3.5	320
435 min	500-650	4	74
450 min	500-650	1.7	350
450 min	500-650	2	190
450 min	500-650	2.5	68
520 typ	600 typ	1.8	185
460 min	550-650	2	64
530 typ	625 typ	1.4	100
480 min	640 typ	1.5	35
530 typ	650 typ	1.1	57
500 min	660 typ	1.2	22

Extremely high speed memory circuit pulse generators and threshold detector subminiature epoxy packages with a La of 1.5nH

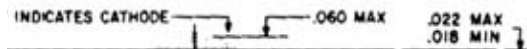
High performance microwave pill packages with series inductance La of 0.15nH, and package capacitance Cp of 0.25pF. Units can be stud-mounted on request

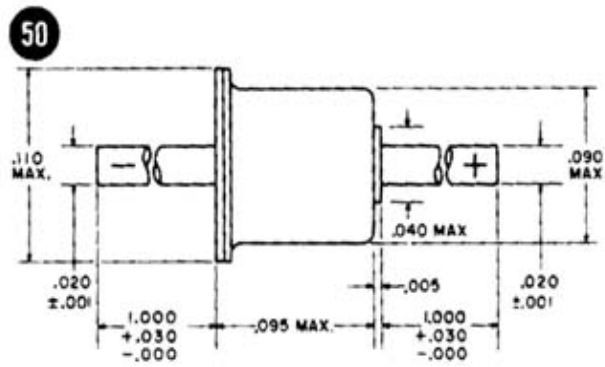
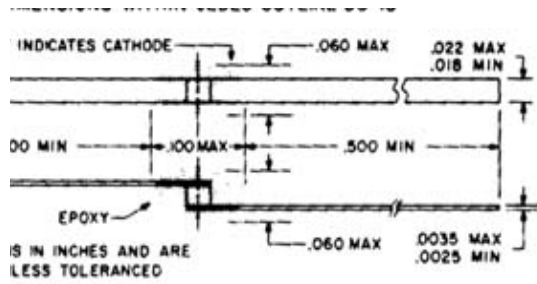
IP1	VF2	
	10	120
	5	130
	5	130
	2	170
	2	170
	1	170
	1	170
	0.5	160
	0.5	160
	0.2	160
	0.2	160
	0.1	160
2 (VF1=100+/- 20mV)		170

BD-1 through -7 are general purpose types for use in mixer, detectors and switching circuits housed in miniature axial package. BD-400 series are microwave versions featuring low capacitance and a pill package with a series inductance L_a of less than 0.1nH



DIMENSIONS WITHIN JEDEC OUTLINE DO-18





ALL DIMEN. IN INCHES AND ARE REFERENCE UNLESS TOLERANCED.

amplifier and convertor
a is 4nH. TO18 package

; amplifier and convertor
series inductance, La of
for the "A" versions.

speed memory circuits, logic circuits,
ors and threshold detectors. Housed in
epoxy packages with a series inductance

mixer,
axial
stating
ductance

