



Scan by Zenith

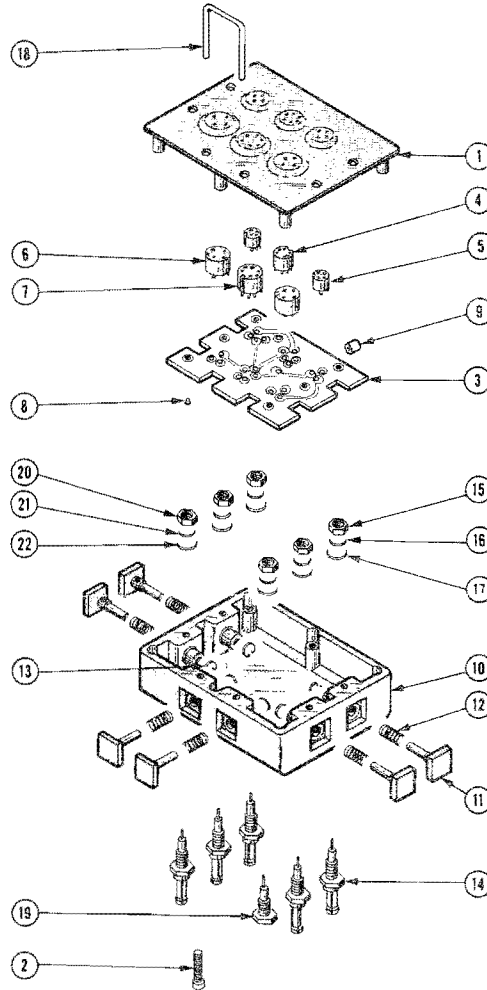
data sheet

TEKTRONIX®

committed to
technical excellence

CS PUBLICATION SUPPORT

TEST ADAPTER (Part No. 013-0098-02) (TRANSISTORS)



NO. 062-1774-00
DATE FEB. 1975 (R)

COPYRIGHT © 1974
TEKTRONIX INC.
ALL RIGHTS RESERVED

TEST ADAPTER

Fig. & Index No.	Tektronix Part No.	Serial/Model No. Eff	Dscont	Qty	1 2 3 4 5	Name & Description	Mfr Code	Mfr Part Number
	013-0098-02			1		ADAPTER,TEST:BIPOLAR TESTERS	80009	013-0098-02
	-----			-		. TEST ADAPTER INCLUDES:		
1	200-0931-06			1		. COV,TEST ADPTR: (ATTACHING PARTS)	80009	200-0931-06
2	213-0214-00			6		. SCREW,CAP SCH:2-56 X 0.375"HEX HD STL - - - * - - -	70278	OBD
3	670-0697-02			1		. CKT BD ASSY:BIPOLAR TESTER ADAPTER	80009	670-0697-02
4	136-0329-00			1		. . SOCKET,PLUG-IN:FOR DUAL TO-18	02660	MFG-64
5	136-0257-00			2		. . SOCKET,PLUG-IN:4 PIN,FOR TO-18	02660	631-026011-042
6	136-0434-00			2		. . SOCKET,PLUG-IN:4 PIN,FOR TO-5	02660	631-26012-042
7	136-0332-00			1		. . SOCKET,PLUG-IN:FOR TO-77	02660	631-26012-062
8	136-0333-00			6		. . CONTACT,ELEC:0.138 INCH LONG	00779	1-331677-4
9	276-0507-00			16		. . SHIELDING BEAD,:0.6UH	78488	57-0180-7D
10	202-0177-01			1		. HSG,TEST ADPTR:	80009	202-0177-01
11	366-1100-00			6		. PUSHBUTTON:MOLD PLSTC W SHAFT (ATTACHING PARTS FOR EACH)	80009	366-1100-00
12	214-1160-00			1		. SPRING,HLCRS:0.165 OD X 0.24" L	04811	OBD
13	354-0350-00			1		. RING,RETAINING:0.073" FREE ID X 0.015" STL - - - * - - -	97464	1000-9CD
14	134-0108-00			5		. PLUG,TIP:6-32 X 1.203" LONG STUD MTG. (ATTACHING PARTS FOR EACH)	80009	134-0108-00
15	210-0407-00			1		. NUT,PLAIN,HEX.:6-32 X 0.25 INCH,BRS	73743	OBD
16	210-0006-00			1		. WASHER,LOCK:INTL,0.146 ID X 0.283"OD,STL	78189	1206-00-00-0541C
17	210-0802-00			1		. WASHER,FLAT:0.15 ID X 0.312 INCH OD - - - * - - -	12327	OBD
18	131-1046-00			1		. CONTACT,ELEC:U SHAPE	80009	131-1046-00
19	134-0133-00			1		. PLUG,TIP:0.312 BRS ROD 0.578 INCH L (ATTACHING PARTS)	80009	134-0133-00
20	210-0407-00			1		. NUT,PLAIN,HEX.:6-32 X 0.25 INCH,BRS	73743	3038-0228-402
21	210-0006-00			1		. WASHER,LOCK:INTL,0.146 ID X 0.283"OD,STL	78189	1206-00-00-0541C
22	210-0802-00			1		. WASHER,FLAT:0.15 ID X 0.312 INCH OD - - - * - - -	12327	OBD

CROSS INDEX MFR. CODE NUMBER TO MANUFACTURER

MFR.CODE	MANUFACTURER	ADDRESS	CITY,STATE,ZIP
00779	AMP, INC.	P. O. BOX 3608	HARRISBURG, PA 17105
02660	BUNKER RAMO CORP., AMPHENOL CONNECTOR DIV.	2801 S. 25TH AVE.	BROADVIEW, IL 60153
04811	PRECISION COIL SPRING CO.	10107 ROSE ST.	EL MONTE, CA 91734
12327	FREEWAY CORP.	9301 ALLEN DR.	CLEVELAND, OH 44125
70278	ALLIED STEEL AND CONVEYORS, DIV. OF SPARTON CORP.	17333 HEALY	DETROIT, MI 48212
73743	FISCHER SPECIAL MFG. CO.	446 MORGAN ST.	CINCINNATI, OH 45206
78189	ILLINOIS TOOL WORKS, INC. SHAKEPROOF DIVISION	ST. CHARLES ROAD	ELGIN, IL 60120
78488	STACKPOLE CARBON CO.		ST. MARYS, PA 15857
80009	TEKTRONIX, INC.	P. O. BOX 500	BEAVERTON, OR 97077
97464	INDUSTRIAL RETAINING RING CO.	57 CORDIER ST.	IRVINGTON, NJ 07111

TEST ADAPTER, BLANK (Part No. 013-0104-00)

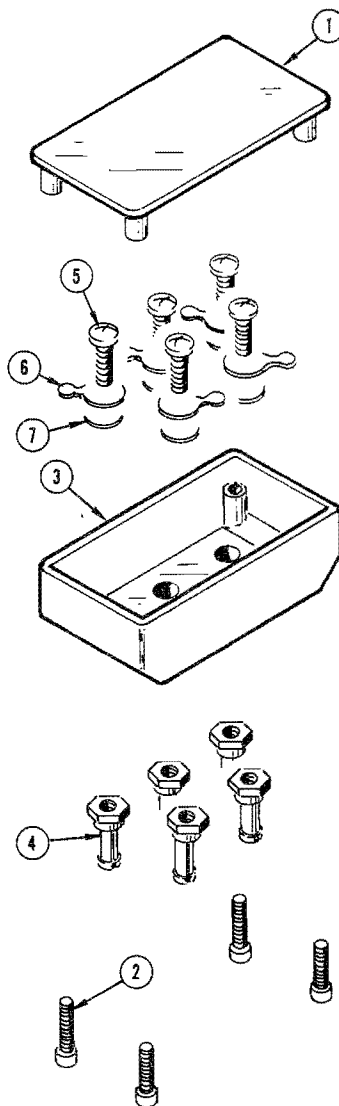
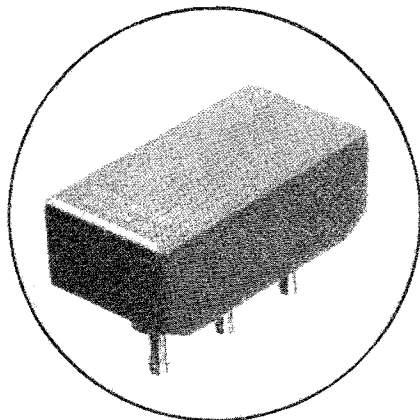


Fig. & Index No.	Tektronix Part No.	Serial/Model No. Eff Disc	Q † y	Description					
				1	2	3	4	5	
1	200-0978-00		1						COVER, test adapter
2	213-0214-00			4					SCREW, cap, socket head, 2-56
3	202-0176-00		1						BOX, test adapter
4	134-0107-00		5						PLUG, tip, internal threaded, 6-32

DATA SHEET

NO. 062-1072-00

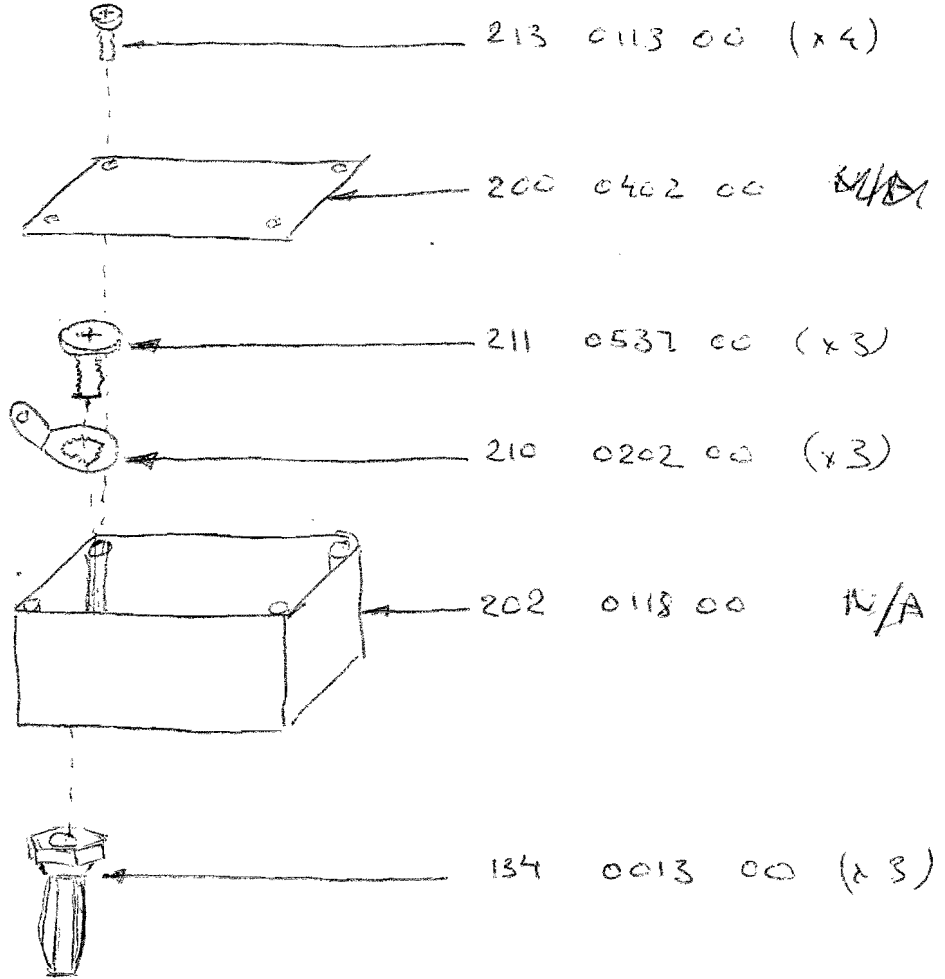
DATE JAN 1971 (R)

COPYRIGHT © 1969
 TEKTRONIX INC.
 ALL RIGHTS RESERVED

**TEST ADAPTER, BLANK
(Part No. 013-0104-00)**

Fig. & Index No.	Tektronix Part No.	Serial/Model No.		Q					Description	
		Eff	Disc	†	y	1	2	3		4
	- - - - -									- mounting hardware for each: (not included w/plug)
5	211-0504-00									1 SCREW, 6-32 x 1/4 inch, PHS
6	210-0202-00									1 LUG, solder, SE #6
7	210-0802-00									1 WASHER, flat, 0.150 ID x 5/16 inch OD

013 0073 00



TEST ADAPTER (Part No. 013-0128-00)

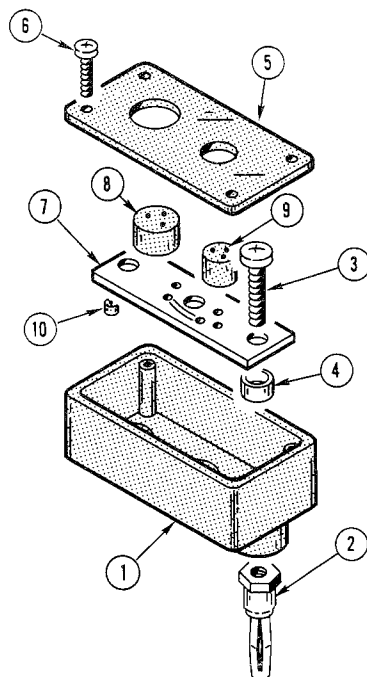


Fig. & Index No.	Tektronix Part No.	Serial/Model No. Eff Disc	Q † y	1 2 3 4 5					Description
					013-0128-00		1		
	- - - - -		-						test adapter includes:
1	202-0100-01		1						BOX, adapter
2	134-0013-00		3						PLUG, banana, female
	- - - - -		-						mounting hardware for each: (not included w/plug)
3	211-0513-00		1						SCREW, 6-32 x 0.625 inch, PHS
4	166-0031-00		1						TUBE, spacer, 0.25 inch long
	- - - - -		-						mounting hardware: (not included w/cover)
5	200-0402-01		1						COVER, adapter
6	213-0113-00		4						SCREW, tapping, 2-32 x 0.312 inch, PHS
	- - - - -		-						mounting hardware: (not included w/cover)
7	670-1936-00		1						CIRCUIT BOARD ASSEMBLY
	- - - - -		-						circuit board assembly:
	388-2489-00		1						CIRCUIT BOARD
8	136-0330-00		1						SOCKET, transistor, TO-5
9	136-0331-00		1						SOCKET, transistor, TO-18
10	276-0507-00		3						CORE, ferramic suppressor

DATA SHEET	
NO.	062-1426-00
DATE	DEC. 1971(R)
COPYRIGHT © 1971 TEKTRONIX INC. ALL RIGHTS RESERVED	

TEST ADAPTER (Part No. 013-0111-00)

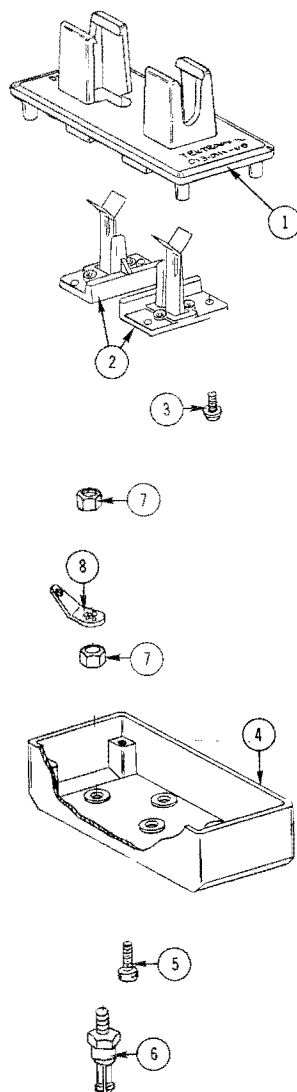


Fig. & Index No.	Tektronix Part No.	Serial/Model No. Eff Disc	Qty	Quantity					Description
				1	2	3	4	5	
	013-0111-00		1						TEST ADAPTER, axial lead diode
	- - - - -		-						test adapter includes:
1	200-1100-01		1						COVER, test adapter
2	352-0245-03		2						HOLDER, contact
	- - - - -		-						mounting hardware for each: (not included w/holder)
3	211-0180-00		2						SCREW, sems, 2-56 x 0.25 inch, PHS
4	202-0176-00		1						BOX, test adapter
	- - - - -		-						mounting hardware:
	- - - - -		-						(not included w/box)
5	213-0214-00		4						SCREW, 2-56 x 0.375 inch, CHS
	- - - - -		-						

DATA SHEET

NO. 062-1208-00

DATE AUGUST 1970

COPYRIGHT © 1970
TEKTRONIX INC.
ALL RIGHTS RESERVED

TEST ADAPTER
(Part No. 013-0111-00)

Fig. & Index No.	Tektronix Part No.	Serial/Model No.		Q	Description
		Eff	Disc	t y	
				1 2 3 4 5	
6	134-0128-00			4	PLUG, tip
	- - - - -			-	mounting hardware for each: (not included w/plug)
7	210-0407-00			2	NUT, hex., 6-32 x 0.25 inch
8	210-0202-00			1	LUG, solder, SE #6



Scan by Zenith

TEKTRONIX®

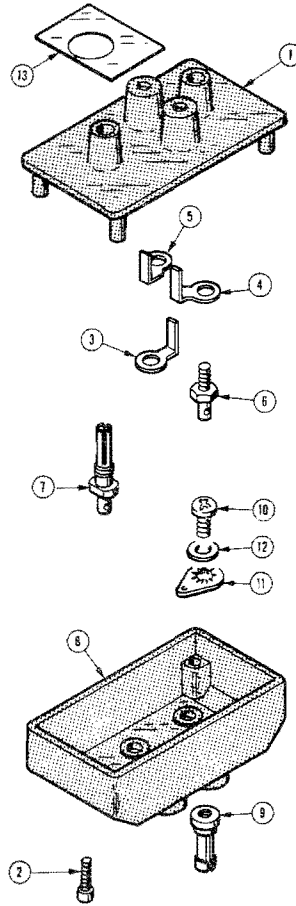
committed to
technical excellence

data sheet

CS PUBLICATION SUPPORT

TEST ADAPTER, TO-3 TRANSISTOR

Part No. 013-0100-01



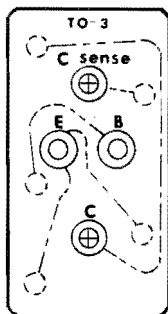
Index No.	Tektronix Part No.	Serial/Model No. Eff	No. Dscont	Qty	1	2	3	4	5	Name & Description	Mfr Code	Mfr Part Number
	013-0100-01			1						ADAPTER, TEST: TRANSISTOR, TO-3	80009	013-0100-01
-1	200-0930-02			1						. COV, TEST ADPTR: (ATTACHING PARTS)	80009	200-0930-02
-2	213-0214-00			4						. SCREW, CAP SCH: 2-56 X 0.375" HEX HD STL	70278	0BD
										- - - * - - -		
-3	131-0691-00			2						. CONTACT, ELEC: SINGLE	80009	131-0691-00
-4	131-0696-02			1						. CONTACT, ELEC: SINGLE OFFSET RIGHT	80009	131-0696-02
-5	131-0696-00			1						. CONTACT, ELEC: SINGLE, OFFSET LEFT	80009	131-0696-00
-6	131-0877-00			4						. TERMINAL, STUD: 4-40 X 0.188 INCH HEX	80009	131-0877-00
-7	134-0105-00			2						. PLUG, TIP: TO-3	80009	134-0105-00
-8	202-0176-00			1						. HSG, TEST ADPTR:	80009	202-0176-00

NO. 062-1068-01
DATE March 1977 (R)

COPYRIGHT © 1975
TEKTRONIX INC.
ALL RIGHTS RESERVED

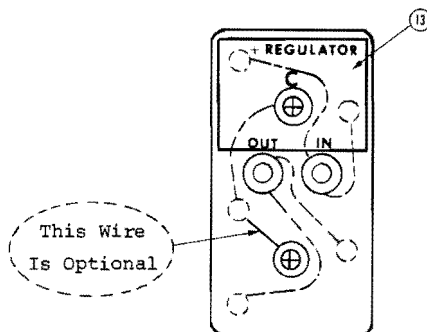
Index No.	Tektronix Part No.	Serial/Model No. Eff	Dscnt	Qty						Name & Description	Mfr	
					1	2	3	4	5		Code	Mfr Part Number
-9	134-0107-00			5						. PLUG,TIP:INTERNAL THREADED 6-32 (ATTACHING PARTS)	80009	134-0107-00
-10	211-0504-00			1						. SCREW,MACHINE:6-32 X 0.25 INCH,PNH STL	83385	OBD
-11	210-0202-00			1						. TERMINAL,LUG:SE #6	78189	2104-06-00-2520N
-12	210-0802-00			1						. WASHER,FLAT:0.15 ID X 0.312 INCH OD	12327	OBD
-13	334-2358-00			1						. MARKER,IDENT:INFO 0.002 X 0.750 X 1.000	80009	334-2358-00

Top View With Cover On



To-3
(STANDARD)

Top View With Cover On



+ REGULATOR

The adapter may be rewired per the above diagram to make +Regulator measurements. The optional label (item #13) should be placed on the cover of adapter to indicate the internal wiring change.

CROSS INDEX MFR. CODE NUMBER TO MANUFACTURER

MFR.CODE	MANUFACTURER	ADDRESS	CITY,STATE,ZIP
12327	FREEWAY CORP.	9301 ALLEN DRIVE	CLEVELAND, OH 44125
70278	ALLIED STEEL AND CONVEYORS, DIV. OF SPARTON CORP.	17333 HEALY	DETROIT, MI 48212
78189	ILLINOIS TOOL WORKS, INC. SHAKEPROOF DIVISION	ST. CHARLES ROAD	ELGIN, IL 60120
80009	TEKTRONIX, INC.	P.O. BOX 500	BEAVERTON, OR 97077
83385	CENTRAL SCREW CO.	2530 CRESCENT DR.	BROADVIEW, IL 60153

TEST ADAPTER, TO-66 TRANSISTOR (Part No. 013-0101-00)

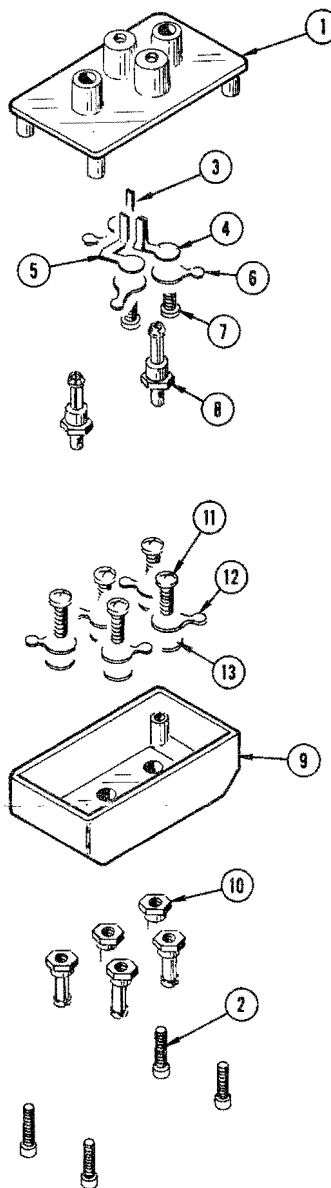
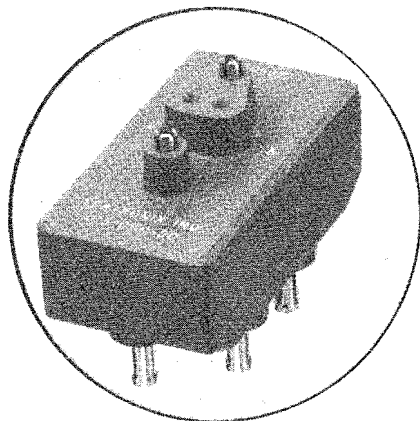


Fig. & Index No.	Tektronix Part No.	Serial/Model No.		Q † y	Description
		Eff	Disc		
					1 2 3 4 5
1	200-0929-01			1	COVER, test adapter
2	213-0214-00			-	mounting hardware: (not included w/cover)
3	131-0693-00			1	CONTACT, electrical, single, offset
4	131-0692-00			1	CONTACT, electrical, dual

DATA SHEET

NO. 062-1069-00

DATE DEC. 1971 (R)

COPYRIGHT © 1969
 TEKTRONIX INC.
 ALL RIGHTS RESERVED

**TEST ADAPTER, TO-66 TRANSISTOR
(Part No. 013-0101-00)**

Fig. & Index No.	Tektronix Part No.	Serial/Model No.		Q					Description		
		Eff	Disc	†	y	1	2	3		4	5
5	131-0694-00					1					CONTACT, electrical, single, offset
6	210-0201-00		7005			3					LUG, solder, SE #4
7	211-0007-00		7005			3					SCREW, 4-40 x 3/16 inch, PHS
	131-0877-00	7006				3					TERMINAL STUD, hex., 4-40 x 0.188 inch
8	134-0106-00					2					PLUG, tip, TO-66
9	202-0176-00					1					BOX, test adapter
10	134-0107-00					5					PLUG, tip, internal threaded 6-32
	- - - - -					-					mounting hardware for each: (not included w/plug)
11	211-0504-00					1					SCREW, 6-32 x 1/4 inch, PHS
12	210-0202-00					1					LUG, solder, SE #6
13	210-0802-00					1					WASHER, flat, 0.150 ID x 5/16 inch OD



Scan by Zenith

TEKTRONIX®

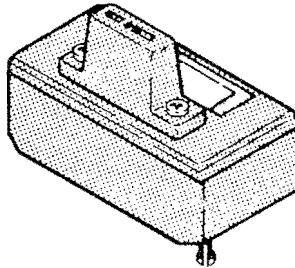
*committed to
technical excellence*

data sheet

CS PUBLICATION SUPPORT

TEST ADAPTER with KELVIN SENSING

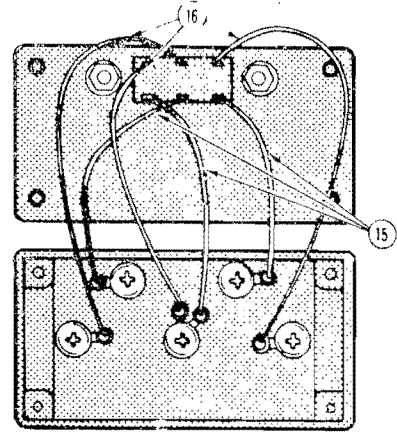
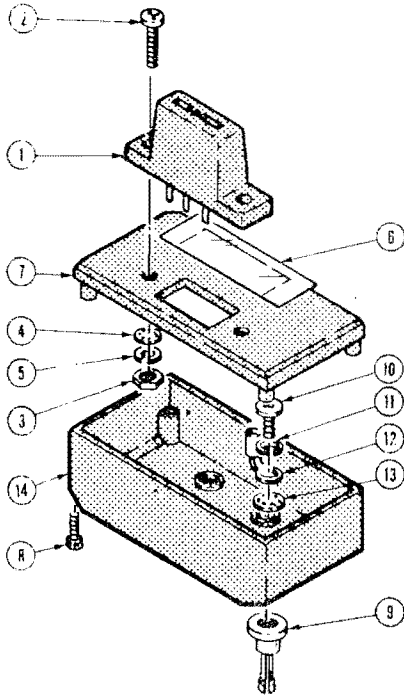
Part No. 013-0138-01



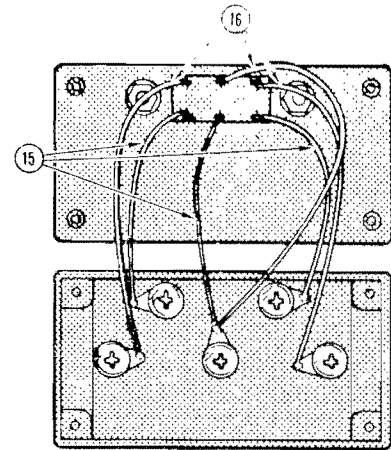
NO. 062-1531-01

DATE March 1977

COPYRIGHT © 1977
TEKTRONIX INC.
ALL RIGHTS RESERVED



B.C.E.
STANDARD WIRING



C.B.E.
CUSTOMER WIRING

REPLACEABLE PARTS LIST

Fig. & Index No.	Tektronix Part No.	Serial/Model No. Eff	Serial/Model No. Dscont	Qty	1	2	3	4	5	Name & Description	Mfr Code	Mfr Part Number
	013-0138-01			1						ADAPTER, TEST:W/KELVIN SENSING	80009	013-0138-01
-1	136-0677-01			1						. SKT, PL-IN ELEK:XSTR, 3 CONT,W/WIRE LEADS (ATTACHING PARTS)	80009	136-0677-01
-2	211-0513-00			2						. SCREW, MACHINE:6-32 X 0.625 INCH, PNH STL	83385	OBD
-3	210-0407-00			2						. NUT, PLAIN, HEX.:6-32 X 0.25 INCH, BRS	73743	3038-0228-402
-4	210-0802-00			2						. WASHER, FLAT:0.15 ID X 0.312 INCH OD	12327	OBD
-5	210-0055-00			2						. WASHER, LOCK:SPLIT, 0.145 ID X 0.253 OD, STL	83385	OBD
										- - - - * - - - -		
-6	334-2072-01			1						. MKR SET, IDENT:MARKED 013-0138-01	80009	334-2072-01
-7	200-0978-07			1						. COV, TEST ADPTR: (ATTACHING PARTS)	80009	200-0978-07
-8	213-0214-00			4						. SCREW, CAP SCH:2-56 X 0.375"HEX HD STL	70278	OBD
										- - - - * - - - -		
-9	134-0107-00			5						. PLUG, TIP: (ATTACHING PARTS FOR EACH)	80009	134-0107-00
-10	211-0507-00			1						. SCREW, MACHINE:6-32 X 0.312 INCH, PNH STL	83385	OBD
-11	210-0055-00			1						. WASHER, LOCK:SPLIT, 0.145 ID X 0.253 OD, STL	83385	OBD
-12	210-0287-00			1						. TERMINAL, LUG:CRIMP-ON, 22-16 AWG, W/RED INSUL	00779	34142
-13	210-0006-00			1						. WASHER, LOCK:INTL, 0.146 ID X 0.288 OD, STL	78189	1206-00-00-0541C
										- - - - * - - - -		

Fig. & Index No.	Tektronix Part No.	Serial/Model No. Eff Dscont	Qty	1	2	3	4	5	Name & Description	Mfr Code	Mfr Part Number
-14	202-0176-00		1						HSG, TEST ADPTR:	80009	202-0176-00
-15	-----		FT						WIRE, ELECTRICAL: 22 AWG STRD, 600V, 0.562 L		
-16	-----		FT						WIRE, ELECTRICAL: 18 AWG STRD, 300V, 0.562 L		
STANDARD ACCESSORIES											
	062-1531-01		1						DATA SHEET: 013-0138-01	80009	062-1531-01

CROSS INDEX—MFR. CODE NUMBER TO MANUFACTURER

Mfr. Code	Manufacturer	Address	City, State, Zip
00779	AMP, INC.	P O BOX 3608	HARRISBURG, PA 17105
12327	FREWAY CORPORATION	9301 ALLEN DRIVE	CLEVELAND, OH 44125
70278	ALLIED STEEL AND CONVEYORS, DIV. OF SPARTON CORP.	17333 HEALY	DETROIT, MI 48212
73743	FISCHER SPECIAL MFG. CO.	446 MORGAN ST.	CINCINNATI, OH 45206
78189	ILLINOIS TOOL WORKS, INC. SHAKEPROOF DIVISION	ST. CHARLES ROAD	ELGIN, IL 60120
80009	TEKTRONIX, INC.	P O BOX 500	BEAVERTON, OR 97077
83385	CENTRAL SCREW CO.	2530 CRESCENT DR.	BROADVIEW, IL 60153