

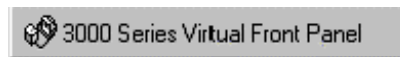
The 3000 Series Virtual Front Panel provides access to the functionality of the 3000 series calibrators via an on screen 'virtual' interface.

Installation

The 3000 Series Virtual Front Panel program is located on a dedicated CD. To install the program insert CD – if it does not autorun, select START -> RUN -> Setup.exe on the CD.

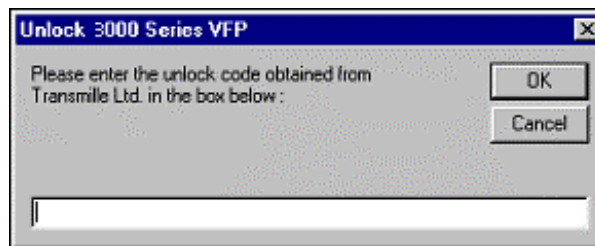
Starting the 3000 Series Virtual Front Panel

On installation of the program, a shortcut will have been created in the Start → Programs menu. Select the icon as shown below to run the program :



Unlocking the 3000 Series Virtual Front Panel

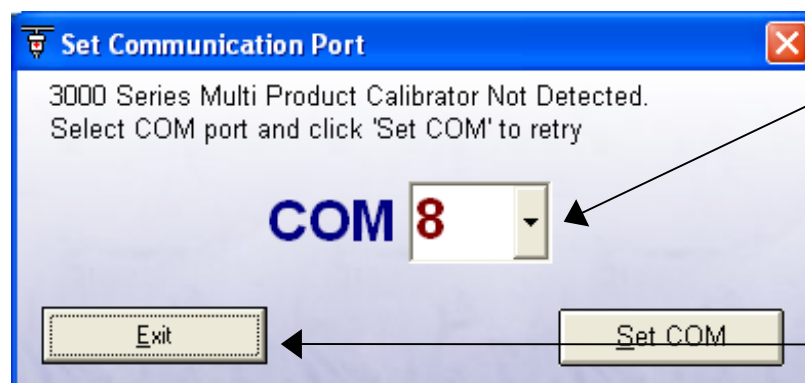
Before the program can be used, the unlock code obtained from Transmille Ltd. must be entered. If you do not have this code please contact Transmille Ltd. at the address shown at the end of this document. When the program is started the following dialogue box will be displayed :



Entering the correct unlock code will result in a message stating success. The unlock code will only need to be entered once, and once unlocked the program will run for an unlimited period.

Using the 3000 Series Virtual Front Panel

When the program starts for the first time, a window will appear asking for a comm. port to be selected :



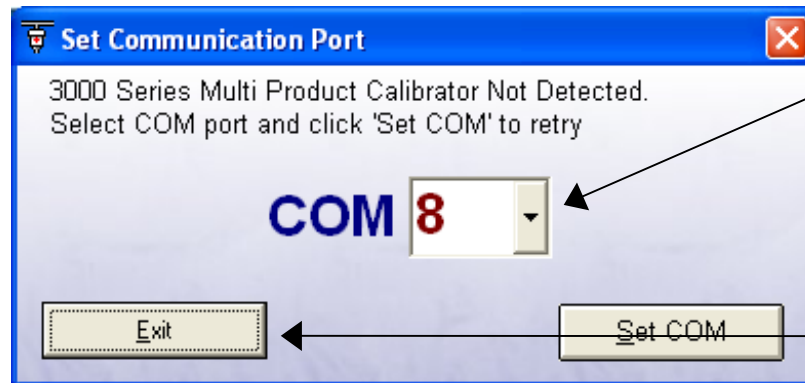
Click a COMM button to select a comm. port.

Click Exit to quit the program.

Tip : For *Desktop* P.C.'s Comm. 2 is suggested.
 For *Laptop* P.C.'s Comm. 1 is suggested.

Note : The user will be warned if a Comm. port which is currently in use or is invalid is chosen.

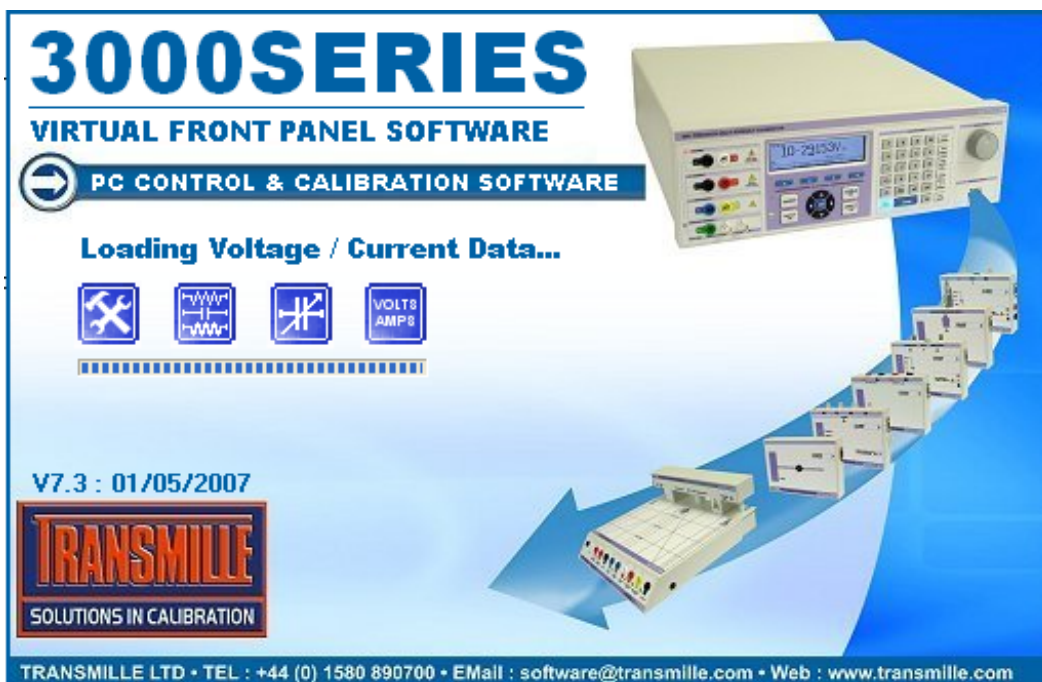
If the program is started without the calibrator connected to the computer, a screen similar to the above screen will be shown. This screen will show the currently selected comm. port highlighted in red. To try to communicate with the calibrator again, simply click on a comm. button :



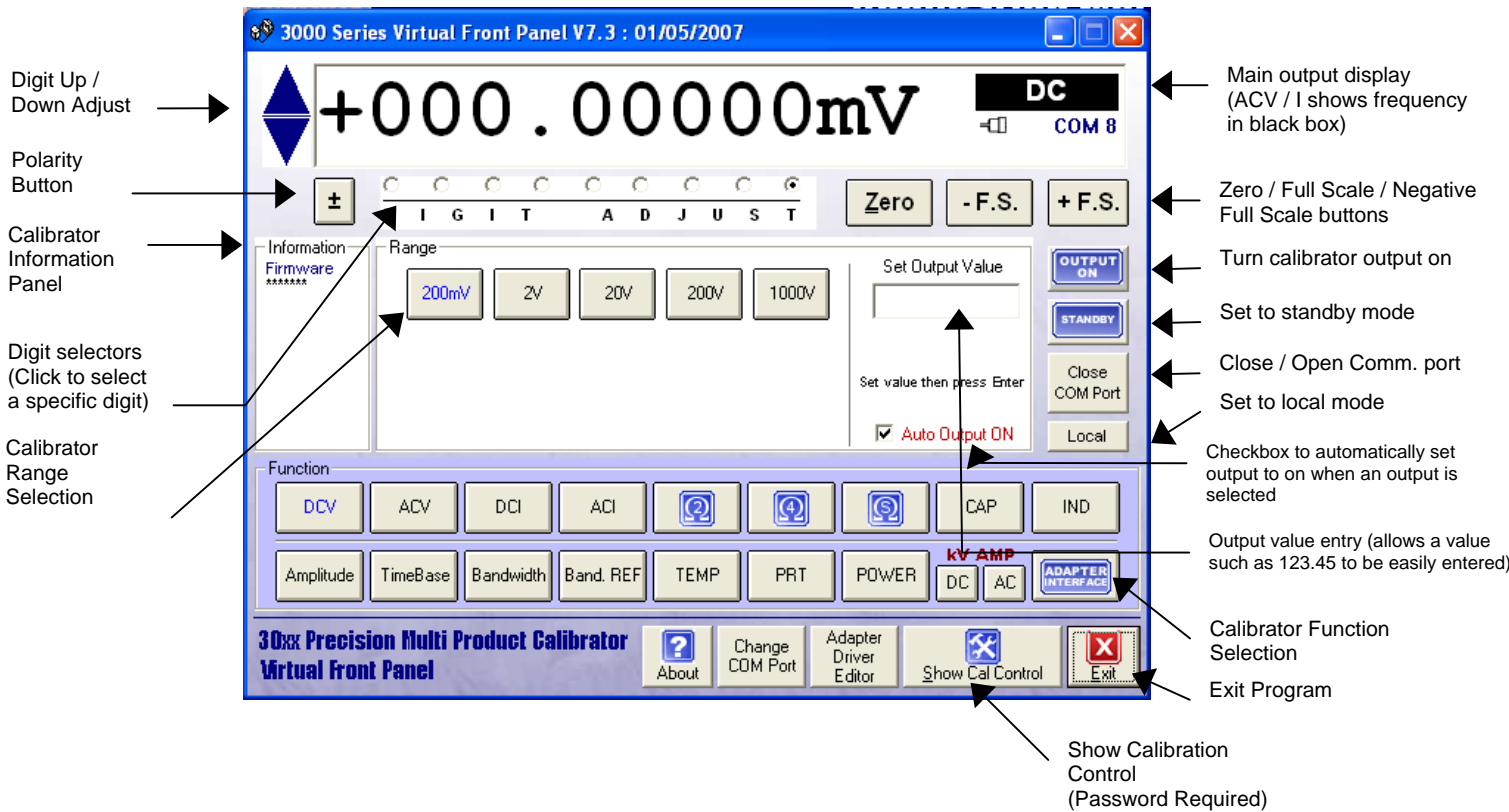
Click a COMM button to try to communicate with the calibrator again (The button highlighted in red is the currently selected comm. port)

Click Exit to quit the program.

Once a valid comm. port has been selected, the main screen will be shown with the following start-up sequence displayed :

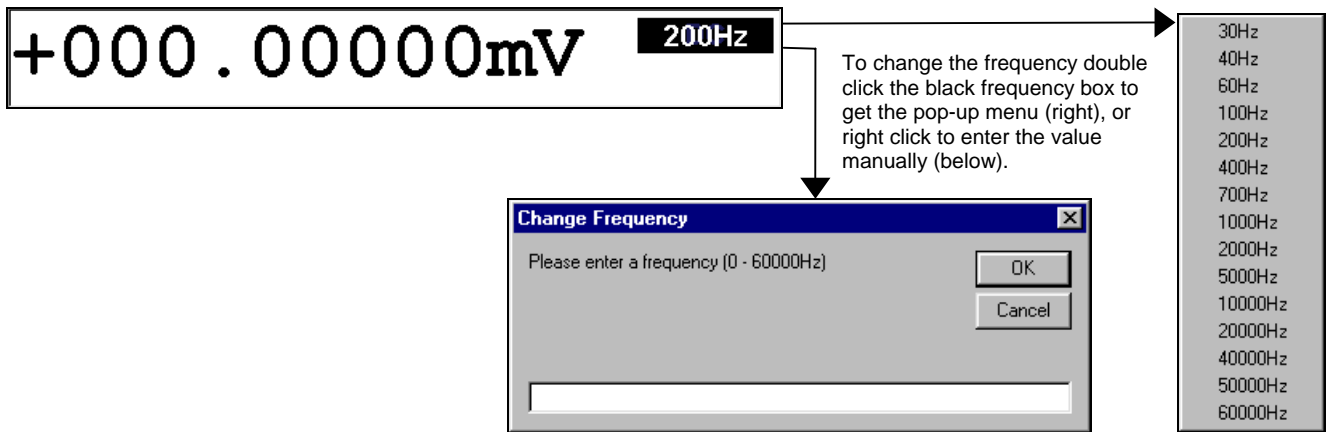


Following successful calibration factor download, the virtual front panel is now ready for use :



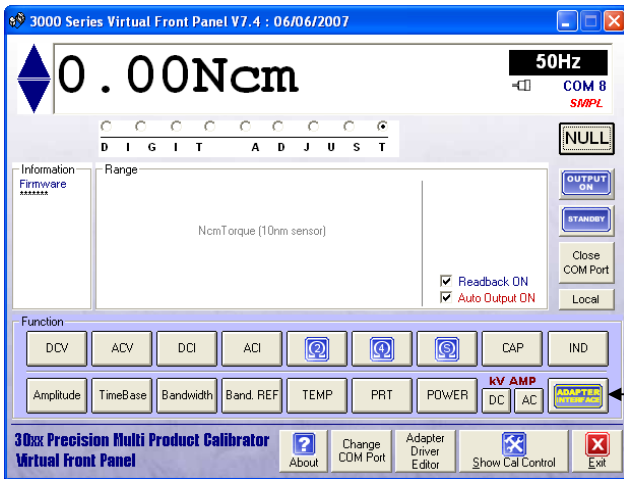
AC Frequency Selection

To allow AC frequency selection, two methods are available :



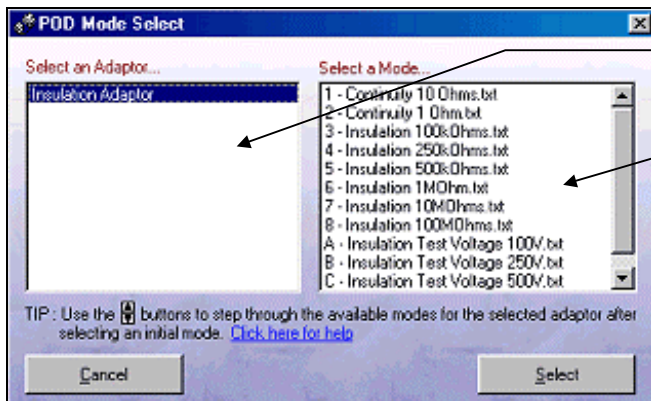
3000 Series Virtual Front Panel - Using the POD Mode

The POD mode of the 3000 Series Virtual Front Panel allows control of many different types of input/output adaptors. To select POD mode, click the POD function button :



Adapter Interface Select

Once POD mode is chosen, a selection screen will be displayed - this allows the type of adaptor to be selected, and a specific range/function to be used :

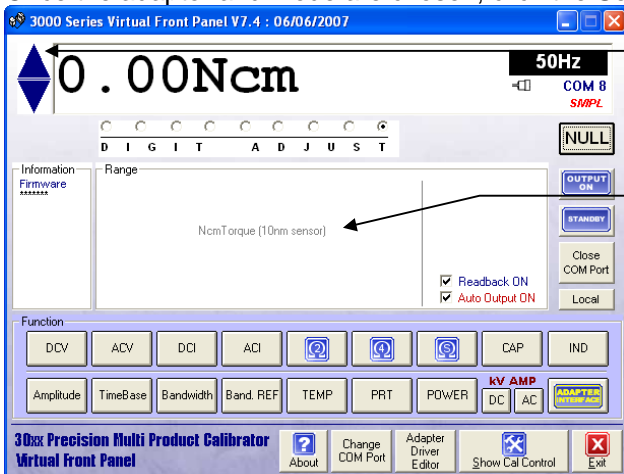


Adaptor selected using this list

Mode / Function selected using this list

To use an adaptor, select it from the left hand list (labelled Select an Adaptor...). When this is selected, all available ranges / functions will be displayed on the right hand list (labelled Select a Mode...).

Once the adaptor and mode are chosen, click the Select button (bottom right) and this mode will be selected.

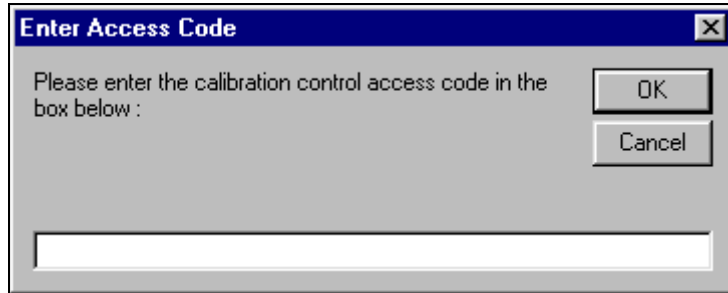


Use the up/down button to select other modes, or click Adapter Interface to reselect from main POD screen (as shown above)

POD mode indication

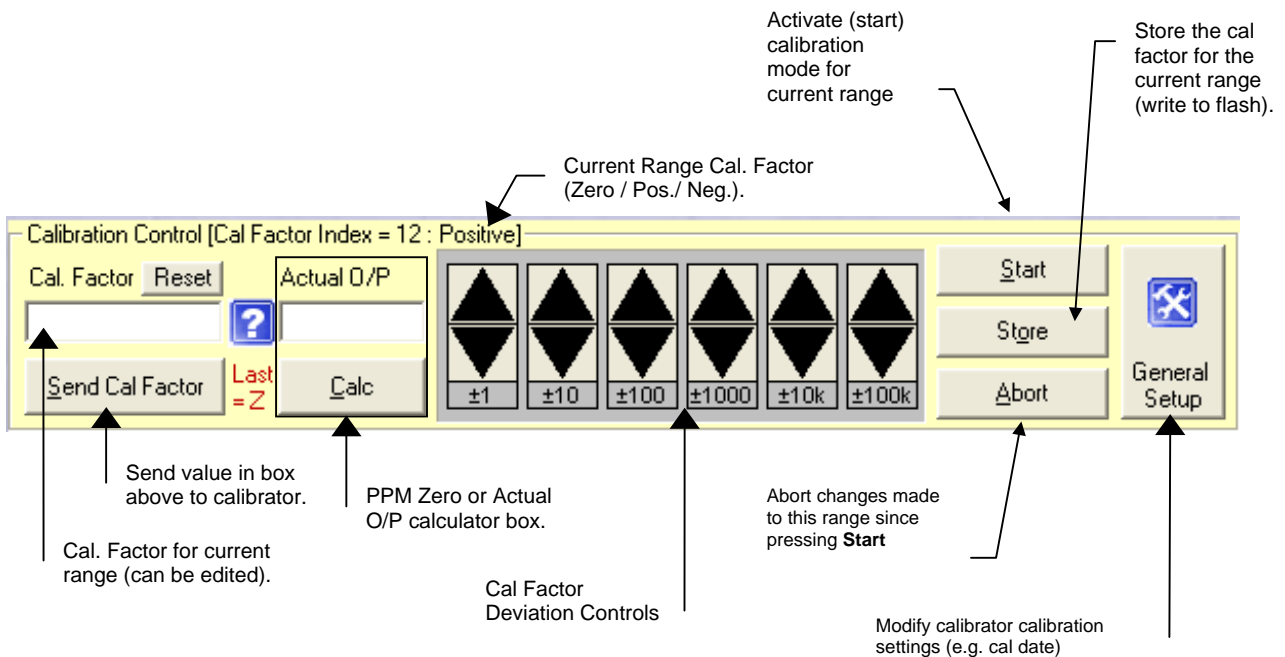
Calibration Control

To access the calibration controls, click on the 'Show Calibration control' button - password entry will be required :



Note : Once the password has been correctly entered, it will not be asked for again until the program is closed and restarted.

Following successful entry of the calibration control password, the calibration control panel will be displayed :



Storing Cal Factors Using the Flash RAM

The cal factors are stored in *Flash* RAM, so to be able to write the data to the Flash RAM it is necessary set it into 'write mode' This is done by simply clicking the Start button within the cal control (shown previously).

Once the cal factor has been changed, pressing the Store button will write the new cal factor back to the Flash RAM. If after clicking the start button and changing the cal factor you wish to discard the change, simply click the Abort button to default back to the previous cal factor.



Each time a different range is selected, the Start button will need to be clicked in order to set the Flash RAM into write mode and allow the cal factor to be stored back to the Flash RAM when the Store button is pressed (or the range is changed).



NOTE : If you forget to click the Start button before changing the cal factor for a range, when the Store button is clicked the calibrator will beep - indicating that the cal factor was NOT SUCCESSFULLY STORED.

To ensure changes to cal factors are stored, the *Virtual Front Panel* program will automatically store any cal factor changes when a range is changed (this will only occur if the user has pressed the Start button, changed the cal factor and then changed range - if the Start button is NOT pressed then the program will not try to save the cal factor back to the Flash RAM).

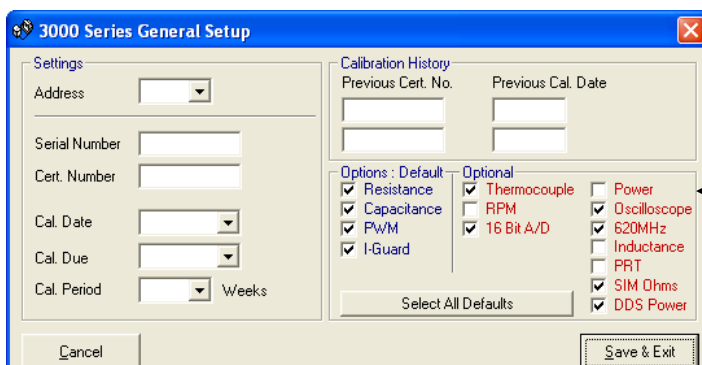
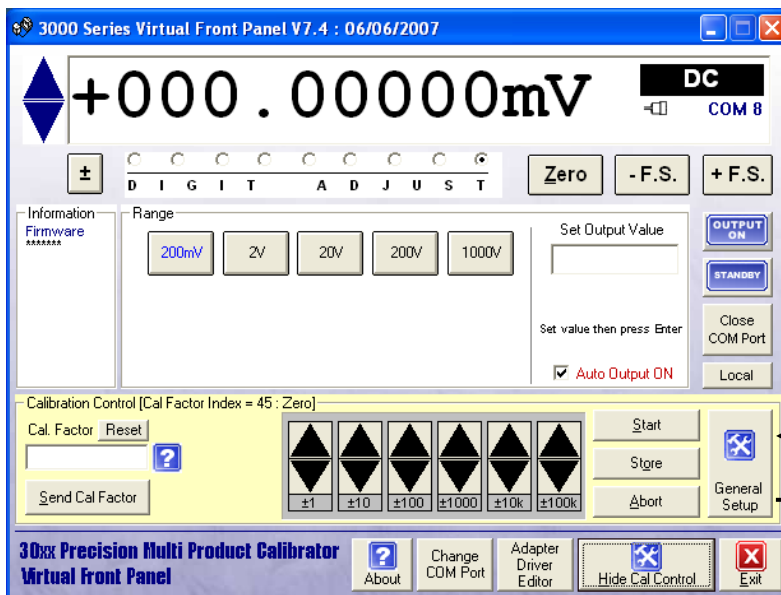
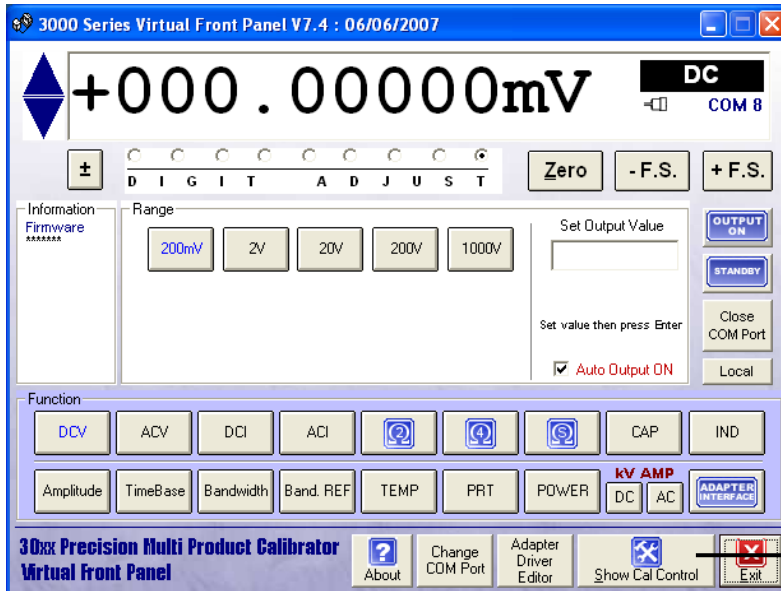
The Calibration Control Data

For each range of a function, the calibration factor will be displayed in the Calibration Value box shown previously. When a new range or function is selected, the calibration control panel will display the appropriate calibration factor.

Note : For OHMS, OHMS4, CAPS and IND there is only a positive calibration factor.

Calibrator Options & Settings

To set the installed options for the 3000 Series calibrator, select the general set-up function using the virtual front panel, shown below :



Once the options and setting screen is shown, the options installed can be selected and saved back to the calibrator. To apply these settings, press the **Save & Exit** button

Set options as required using checkboxes, then click **Save & Exit** to apply.

NOTE : To allow new options setting to be loaded by calibrator, please turn calibrator off, then on again after saving new option settings.

NOTE : All of the options require specific hardware to be installed in the calibrator. Selecting the option in the firmware will not allow this option to be used unless the hardware is fitted.