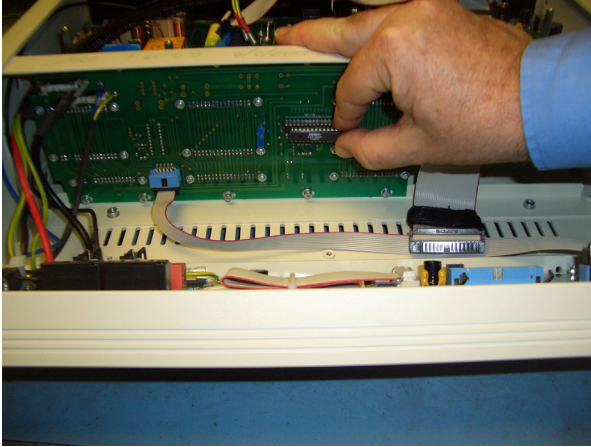


STEP 1

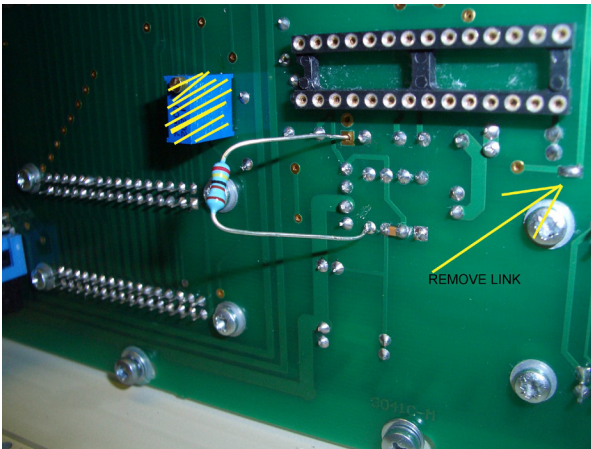
Install the **A/D IC ADS7825P**

PIN 1 : Left hand bottom corner



STEP 2

Remove solder link



STEP 3

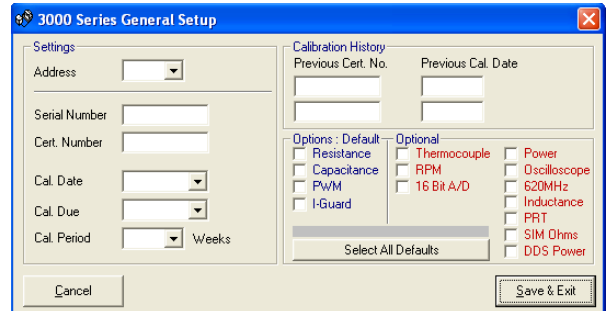
Fit 2k4 resistor to connector board as shown above

STEP 4

Enable 16 Bit A/D option using Virtual Front Panel

Select the SHOW CAL CONTROL button.

Select GENERAL SETUP button



STEP 5

Adjust zero and full scale using virtual front panel software .

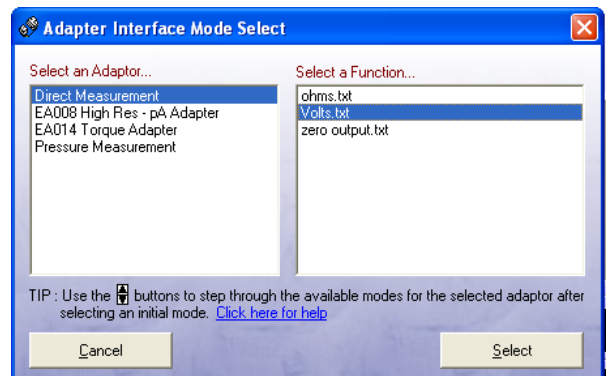
NOTE : Connect 0V and +5V to adapter interface input

GROUND = Pin 7

INPUT = Pin 8

Select **Adapter Interface** function on virtual front panel.

Select **Direct Measurement -> Volts.txt** from the Adapter Interface Mode Select screen.



Select the SHOW CAL CONTROL button.

Adjust ZERO and FULL SCALE points using the UP/DOWN buttons.