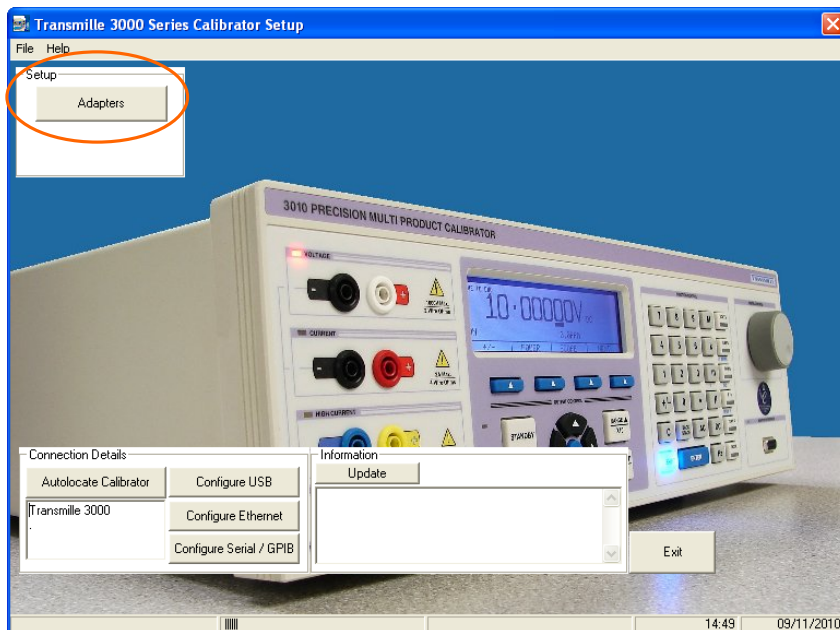


The Transmille 3000A series calibrator can be used with a series of Adapters to extend the capabilities of the unit.

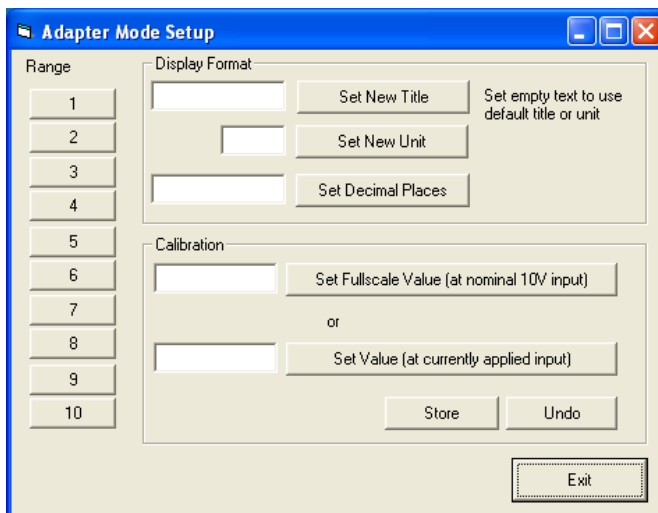
When ordered with adapters the 3000A calibrator will come pre-configured for use with the adapters, however many adapters can be purchased separately from the calibrator and configured with a previously purchased calibrator.

To configure the 3000A calibrator for use with adapters the 3000A Series Adapter Setup utility can be used.



To configure the adapter, first connect the adapter to the Adapter Interface connection on the front of the calibrator. If the adapter is fitted with a power LED this will light up to indicate correct connection.

Please select the “Adapters” option as shown above, a second menu will now appear.





Configuration

The 3000A can be configured for use with 10 adapters at any one time (if more adapters are required then a previous adapter must be removed).

Select an unused range from the list on the left of the screen.

A Title may be set to identify the adapter from the screen of the calibrator, as well as the units to be displayed and how many decimal places should be shown.

Please ensure that the “set” buttons next to each text box are clicked after entering the required title, units and decimal places as these buttons must be selected to send data to the calibrator.

Calibration

To calibrate the calibrator/adapter to read back the correct value from the adapter there are two options,

- 1) Set the expected readout (value displayed on the screen) at 10V input (i.e. for a pressure transducer that outputs 10V when 10Bar is applied, the value will be 10)

Or

- 2) Set value at currently applied input, for example, 10Bar is currently being applied to the adapter.

Please note that when using option 1 the recorded values from the certificate must be used, as the adapter may have an offset (i.e. an input of 9.98 bar outputs 10V from the adapter)

Multiple Units

To configure an adapter for use in two or more different units, for example Bar and Psi, a second “adapter” must be created with the second set of units, and the appropriate calibration performed (please see calibration section above)