

0.00° 0.25° 0.50° 0.75° 1.00° 1.25° 1.50° 1.75° 2.00°

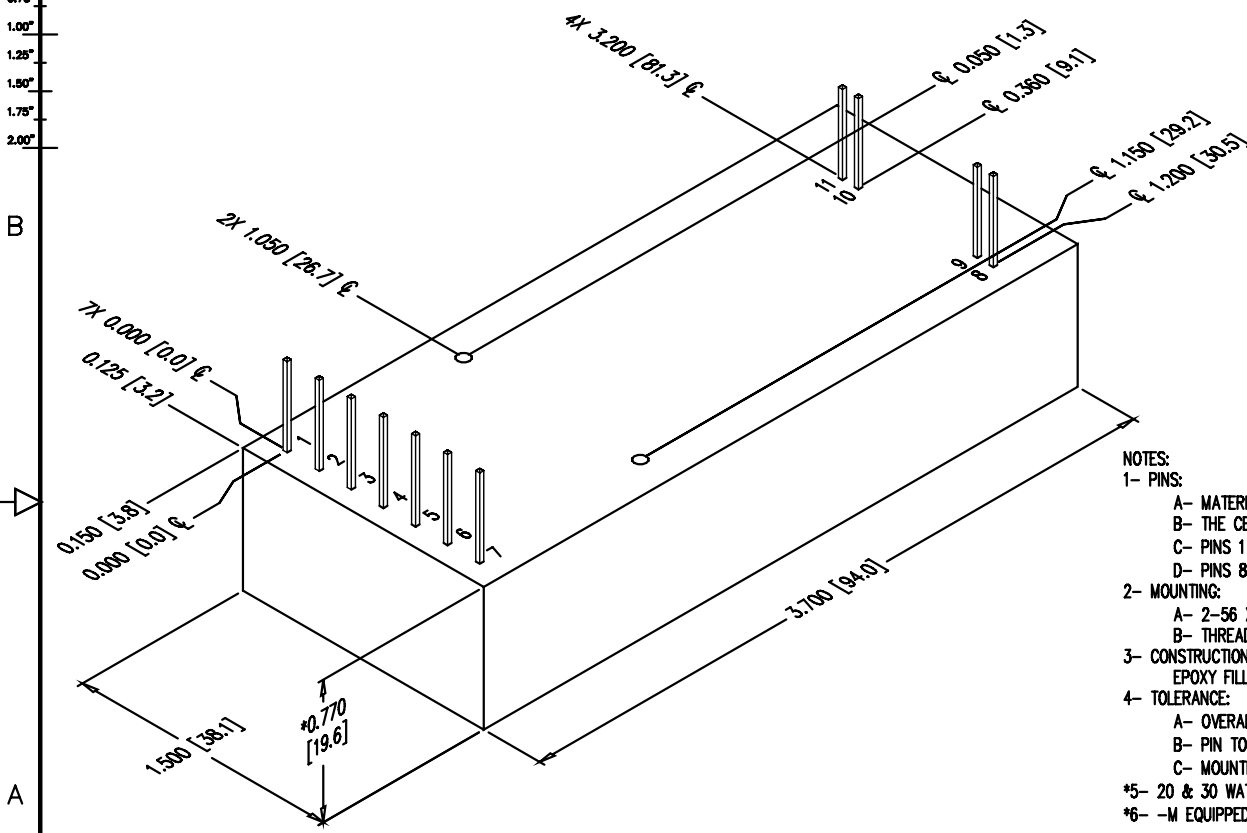
2

PROPRIETARY STATEMENT: ULTRAVOLT INC.
CONFIDENTIAL DRAWING

B PART NUMBER: OL-003 REV F SH 1

REVISIONS

LTR	DESCRIPTION	BY	DATE	APPD
A	NEW RELEASE	D.S.	2/4/99	J.M.
B	ADDED METRIC DIM AS PER ECO #1935	J.T.	2/17/00	J.M.
C	ADDED DWG NO. PER ECO #2137	D.S.	01/12/05	J.M.
D	REVISED PER ECO #2743	SRO	3/1/02	D.P.
E	REVISED PER ECO #UV3136	SG	11/25/03	SRO
F	REVISED PER ECO #UV3245	RG	10/10/05	S.O.



- NOTES:
- 1- PINS:
 - A- MATERIAL: GOLD PLATED 0.025 [0.64] SQ.
 - B- THE CENTER OF THE PINS AND MOUNTING HOLES ARE LOCATED FROM THE CENTER OF PIN 1.
 - C- PINS 1 THRU 7 SPACING 0.200 [5.08] ON CENTER, HEIGHT FROM COVER 0.470 [11.7] MIN.
 - D- PINS 8, 9 AND 10, 11 SPACING 0.100 [2.54] ON CENTER, HEIGHT FROM COVER 0.470 [11.7] MIN.
 - 2- MOUNTING:
 - A- 2-56 X 0.30 [7.62] DP UNC-2B THD 2 PLACES.
 - B- THREADED POST MAY NOT BE FLUSH TO COVER.
 - 3- CONSTRUCTION:
 - EPOXY FILLED DAP BOX CERTIFIED TO ASTM-D-5948.
 - 4- TOLERANCE:
 - A- OVERALL +/-0.050 [1.27]
 - B- PIN TO PIN +/-0.015 [0.38]
 - C- MOUNTING HOLE LOCATION +/- 0.025 [0.64]
 - *5- 20 & 30 WATT VERSIONS ARE AN ADDITIONAL 0.062 [1.57] IN HEIGHT.
 - *6- -M EQUIPPED UNITS ARE AN ADDITIONAL 0.030 [0.76] IN HEIGHT.

DASH NUMBER	NEXT ASSY	USED ON
APPLICATION		

UNLESS OTHERWISE SPECIFIED DIMENSION ARE IN INCHES		CUSTOMER	
TOLERANCES ARE:		DRAWN	S. Orban
2 PL DEC ± .02	FRACT ± 1/64	DATE	02/01/02
3 PL DEC ± .010	ANGLES ± 2°	CHKD	D. Parant
HOLE DIA	TOLERANCES	MFG	N/A
.0130 THRU .125	+ .004	MFG ENGR	N/A
.125 THRU .250	- .004	PROCESS	N/A
.250 THRU .500	+ .005	QA	N/A
.500 THRU .750	- .005	CHIEF ENG	N/A
.750 THRU 1.000	+ .010		
1.000 THRU 2.000	- .012		

ULTRAVOLT, INC.
1800 OCEAN AVE. FRNT, RONKONKOMA, N.Y. 11770
1-877-471-4444

OUTLINE
A & C SERIES

B	PART NUMBER:	REV
	OL-003	F

SCALE NONE DO NOT SCALE THIS DRAWING SHEET 1 OF 1