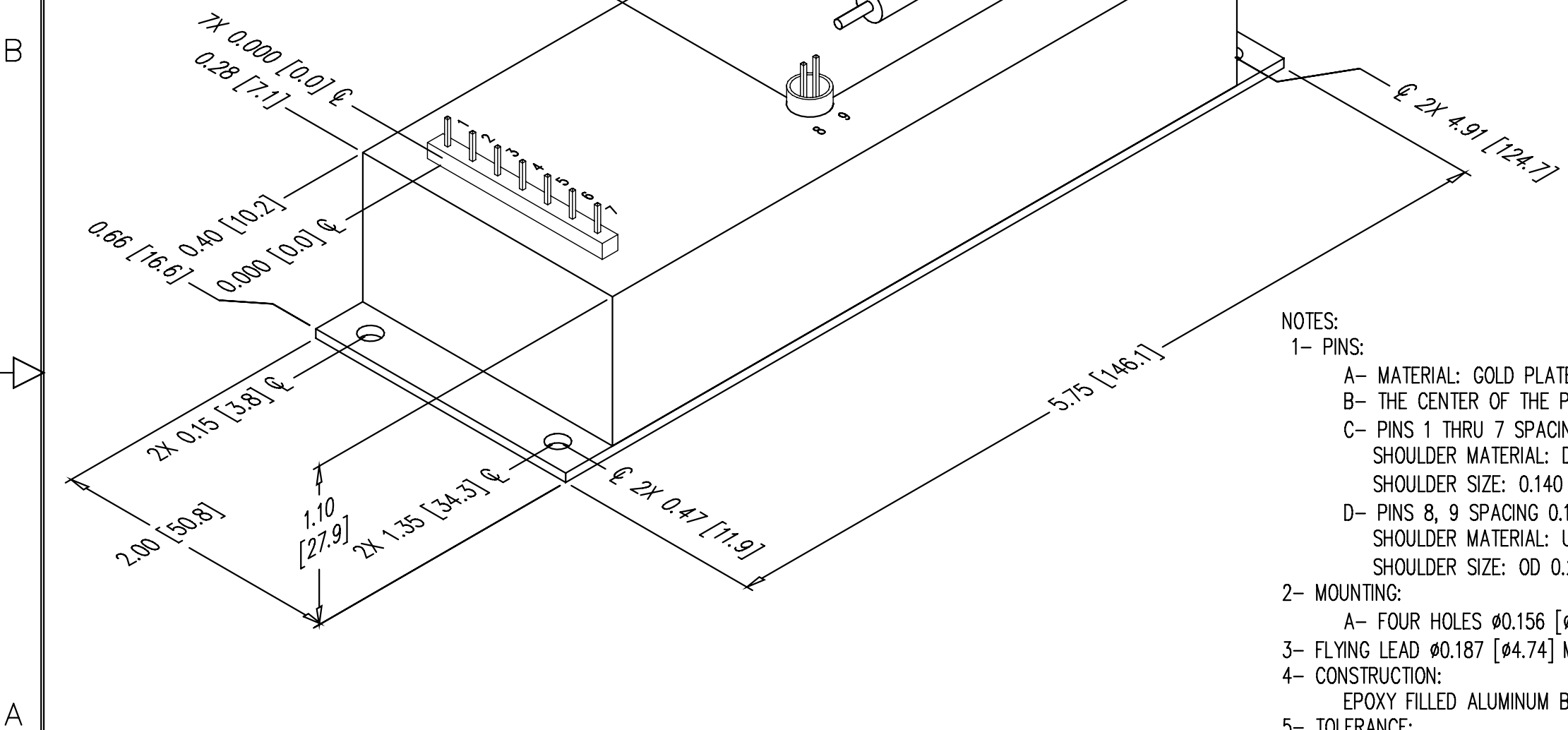


0.00" 0.25" 0.50" 0.75" 1.00" 1.25" 1.50" 1.75" 2.00"

PROPRIETARY STATEMENT: ULTRAVOLT INC.
CONFIDENTIAL DRAWING

REVISIONS				
LTR	DESCRIPTION	BY	DATE	APPD
A	NEW RELEASE	D.S.	98/01/08	J.M.
B	ADDED 7 PIN CONNECTOR BLOCK	D.S.	99/05/27	J.M.
C	ADDED P/N & METRIC DIMS	D.S.	01/11/28	J.M.
D	REVISED PER ECO #2743	SRO	3/1/02	D.P.
E	REVISED PER ECO #UV3135	SG	12/02/03	SRO
F	REVISED PER ECO #UV3247	RG	11/12/05	S.O.
G	REVISED PER ECO EC-00312-UV	SRO	8/18/08	DB



NOTES:

1- PINS:
 A- MATERIAL: GOLD PLATED 0.025 [0.64] SQ.
 B- THE CENTER OF THE PINS AND MOUNTING HOLES ARE LOCATED FROM THE CENTER OF PIN 1.
 C- PINS 1 THRU 7 SPACING 0.200 [5.08] ON CENTER, HEIGHT FROM COVER 0.350 [8.9] MIN. SHOULDER MATERIAL: DIALYL PHTHALATE. 94V0. SHOULDER SIZE: 0.140 [3.5] X 1.400 [35.56] X 0.060 [1.5] HEIGHT FROM COVER.
 D- PINS 8, 9 SPACING 0.100 [2.54] ON CENTER, HEIGHT FROM COVER 0.350 [8.9] MIN. SHOULDER MATERIAL: ULTEM. SHOULDER SIZE: OD 0.27 [6.86] X ID 0.23 [5.71] X 0.200 [5.0] MIN HEIGHT FROM COVER.

2- MOUNTING:
 A- FOUR HOLES ϕ 0.156 [ϕ 3.96] THROUGH A 0.062 [1.57] THK PLATE.

3- FLYING LEAD ϕ 0.187 [ϕ 4.74] MAX. APPROX. 18.00 [457.2] LONG.

4- CONSTRUCTION:
 EPOXY FILLED ALUMINUM BOX CHEM FILM PER MIL-C-5541 CLASS 1A.

5- TOLERANCE:
 A- OVERALL +/-0.050 [1.27]
 B- PIN TO PIN +/-0.015 [0.38]

DASH NUMBER	NEXT ASSY	USED ON
APPLICATION		

HOLE DIA	TOLERANCES
.0135 THRU .125	+ .004 - .004
.126 THRU .250	+ .005 - .005
.251 THRU .500	+ .006 - .006
.501 THRU .750	+ .008 - .008
.751 THRU 1.000	+ .010 - .010
1.001 THRU 2.000	+ .012 - .012

UNLESS OTHERWISE SPECIFIED DIMENSION ARE IN INCHES TOLERANCES ARE:		CUSTOMER	
2 PL DEC ± .02	FRACT ± 1/64	DRAWN	S. Orban
3 PL DEC ± .010	ANGLES ± 2°	DATE	02/04/02
		CHKD	D. Parant
		3/20/02	
		MFG	N/A
		MFG ENGR	N/A
		PROCESS	N/A
		QA	N/A
		CHIEF ENG	N/A
		CFN: OL-006_revG_15A_CAN.dwg	

ULTRAVOLT, INC.
 1800 OCEAN AVE. FRNT, RONKONKOMA, N.Y. 11779
 1-631-471-4444

OUTLINE
 15A SERIES
 METAL CASE

PART NUMBER: OL-006 REV G

SCALE NONE DO NOT SCALE THIS DRAWING SHEET 1 OF 1