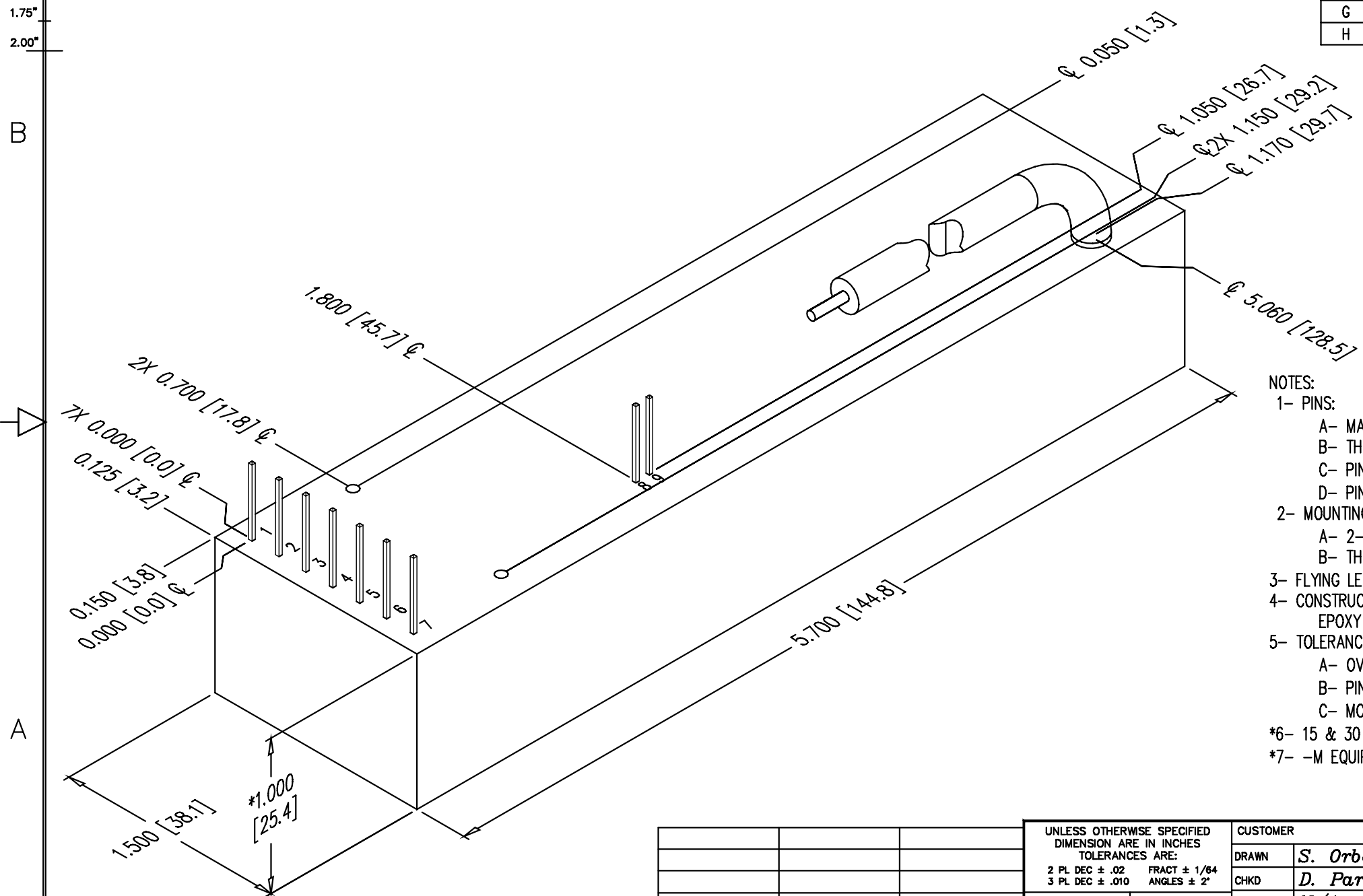


0.00" 0.25" 0.50" 0.75" 1.00" 1.25" 1.50" 1.75" 2.00"

PROPRIETARY STATEMENT: ULTRAVOLT INC.
CONFIDENTIAL DRAWING

B PART NUMBER: OL-016 REV H SH 1

REVISIONS				
LTR	DESCRIPTION	BY	DATE	APPD
A	NEW RELEASE	D.S.	12/15/97	J.M.
B	5.14 WAS 5.1.825 WAS .85	D.S.	12/22397	J.M.
C	ADDED TITLE TO PICTURE	D.S.	4/5/99	J.M.
D	ADDED METRIC DIM AS PER ECO #1935	J.T.	2/17/00	J.M.
E	REVISED PER ECO #2137	D.S.	01/12/18	J.M.
F	REVISED PER ECO #2743	SRO	3/1/02	D.P.
G	REVISED PER ECO #JV3135	SG	12/04/03	SRO
H	REVISED PER ECO #JV3245	RG	10/11/05	S.O.



NOTES:

1- PINS:
 A- MATERIAL: GOLD PLATED 0.025 [0.64] SQ.
 B- THE CENTER OF PINS AND MOUNTING HOLES ARE LOCATED FROM THE CENTER OF PIN 1.
 C- PINS 1 THRU 7 SPACING 0.200 [5.08] ON CENTER, HEIGHT FROM COVER 0.350 [8.9] MIN.
 D- PINS 8, 9 SPACING 0.100 [2.54] ON CENTER HEIGHT, FROM COVER 0.350 [8.9] MIN.

2- MOUNTING:
 A- 2-56 X 0.30 [7.62] DP UNC-2B THD 2 PLACES.
 B- THREADED POST MY NOT BE FLUSH TO COVER.

3- FLYING LEAD ϕ 0.187 [ϕ 4.8] MAX. APPROX. 18.00 [457.2] LONG.

4- CONSTRUCTION:
 EPOXY FILLED DAP BOX CERTIFIED TO ASTM-D-5948.

5- TOLERANCE:
 A- OVERALL +/-0.050 [1.27]
 B- PIN TO PIN +/-0.015 [0.38]
 C- MOUNTING HOLE LOCATION +/-0.025 [0.64]

*6- 15 & 30 WATT VERSIONS ARE AN ADDITIONAL 0.062 [1.57] IN HEIGHT.
 *7- -M EQUIPPED UNITS ARE AN ADDITIONAL 0.030 [0.76] IN HEIGHT.

UNLESS OTHERWISE SPECIFIED DIMENSION ARE IN INCHES TOLERANCES ARE:			CUSTOMER	
2 PL DEC ± .02	FRACT ± 1/64	DATE	S. Orban	
3 PL DEC ± .010	ANGLES ± 2°	02/04/02	D. Parant	
HOLE DIA	TOLERANCES	MFG	N/A	
.0135 THRU .125	+ .004 - .004	MFG ENGR	N/A	
.126 THRU .250	+ .005 - .005	PROCESS	N/A	
.251 THRU .500	+ .006 - .006	QA	N/A	
.501 THRU .750	+ .008 - .008	CHIEF ENG	N/A	
.751 THRU 1.000	+ .010 - .010	OFF: OL-016_revH_20A.dwg		
1.001 THRU 2.000	+ .012 - .012			
DASH NUMBER	NEXT ASSY	USED ON		
APPLICATION				

ULTRAVOLT, INC.
 1800 OCEAN AVE. FRNT, RONKONKOMA, N.Y. 11779
 1-831-471-4444

OUTLINE
 20A SERIES

PART NUMBER: OL-016 REV H

SCALE NONE DO NOT SCALE THIS DRAWING SHEET 1 OF 1