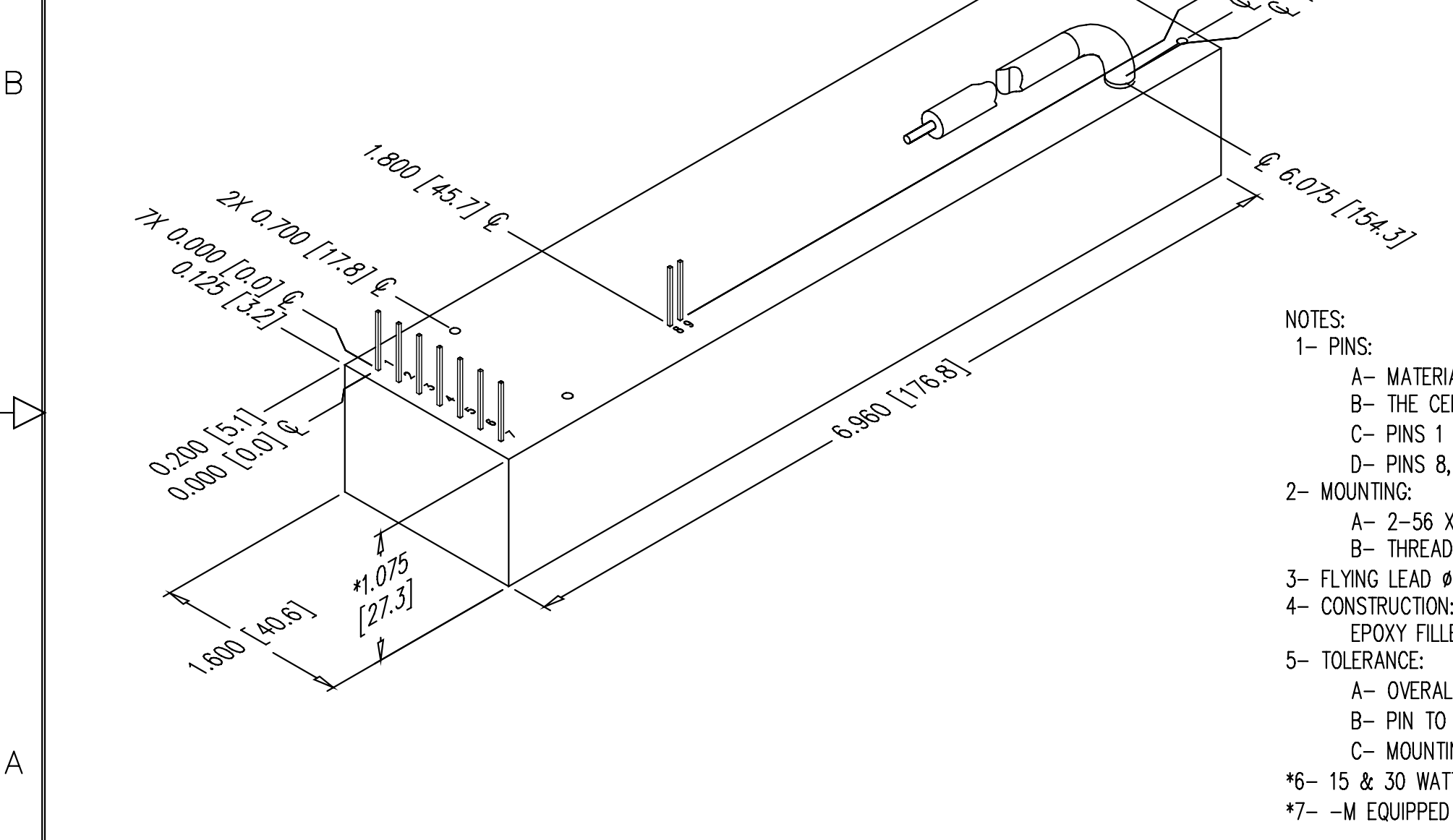


0.00" 0.25" 0.50" 0.75" 1.00" 1.25" 1.50" 1.75" 2.00"

PROPRIETARY STATEMENT: ULTRAVOLT INC.
CONFIDENTIAL DRAWING

B PART NUMBER: OL-017 REV K SH 1

| REVISIONS | | | | |
|-----------|--|------|----------|------|
| LTR | DESCRIPTION | BY | DATE | APPD |
| A | NEW RELEASE | D.S. | 2/4/99 | J.M. |
| B | 6.2 DIM WAS 6.1, ADDED FUTURE MTG HOLES AND CALLOUT TO 1.075 DIM | D.S. | 10/29/97 | J.M. |
| C | CHANGED #2-56 HOLES TO 4 PLACES AND CHANGED FROM .3 TO .25 MIN, REMOVED .06 DIM FOR -E, .825 DIM WAS .85 | D.S. | 12/23/97 | J.M. |
| D | ADDED TITLE TO PICTURE | D.S. | 4/5/99 | J.M. |
| E | ADDED METRIC DIM AS PER ECO #1935 | J.T. | 2/17/00 | J.M. |
| F | REVISED PER ECO #2137 | D.S. | 01/12/18 | J.M. |
| G | REVISED PER ECO #2743 | SRO | 3/1/02 | D.P. |
| H | REVISED PER ECO #UV3136 | SG | 11/25/03 | SRO |
| J | REVISED PER ECO #UV3245 | RG | 10/11/05 | S.O. |
| K | REVISED PER EC-01036-UV | A.S. | 07/26/10 | GM |



- NOTES:
- 1- PINS:
 - A- MATERIAL: GOLD PLATED 0.025 [0.64] SQ.
 - B- THE CENTER OF THE PINS AND MOUNTING HOLES ARE LOCATED FROM THE CENTER OF PIN 1.
 - C- PINS 1 THRU 7 SPACING 0.200 [5.08] ON CENTER, HEIGHT FROM COVER 0.370 [9.4] MIN
 - D- PINS 8, 9 SPACING 0.100 [2.54] ON CENTER, HEIGHT FROM COVER 0.370 [9.4] MIN
 - 2- MOUNTING:
 - A- 2-56 X 0.30 [7.62] DP UNC-2B THD 4 PLACES.
 - B- THREADED POST MAY NOT BE FLUSH TO COVER.
 - 3- FLYING LEAD ϕ 0.210 [5.33] MAX. APPROX. 18.00 [457.2] LONG
 - 4- CONSTRUCTION:
 - EPOXY FILLED DAP BOX CERTIFIED TO ASTM-D-5948
 - 5- TOLERANCE:
 - A- OVERALL +/-0.050 [1.27]
 - B- PIN TO PIN +/-0.015 [0.38]
 - C- MOUNTING HOLE LOCATION +/- 0.025 [0.64]
 - *6- 15 & 30 WATT VERSIONS ARE AN ADDITIONAL 0.062 [1.57] IN HEIGHT.
 - *7- -M EQUIPPED UNITS ARE AN ADDITIONAL 0.030 [0.76] IN HEIGHT.

| DASH NUMBER | NEXT ASSY | USED ON |
|-------------|-----------|---------|
| APPLICATION | | |

| HOLE DIA | TOLERANCES |
|------------------|------------------|
| .0135 THRU .125 | + .004 - .004 |
| .126 THRU .250 | + .005 - .005 |
| .251 THRU .500 | + .006 - .006 |
| .501 THRU .750 | + .008 - .008 |
| .751 THRU 1.000 | + .010 - .010 |
| 1.001 THRU 2.000 | + .012 - .012 |

| UNLESS OTHERWISE SPECIFIED DIMENSION ARE IN INCHES TOLERANCES ARE: | | CUSTOMER | |
|--|--------------|-----------|-------------------------|
| 2 PL DEC ± .02 | FRACT ± 1/64 | DRAWN | S. Orban |
| 3 PL DEC ± .010 | ANGLES ± 2' | DATE | 02/04/02 |
| | | CHKD | D. Parant |
| | | MFG | N/A |
| | | MFG ENGR | N/A |
| | | PROCESS | N/A |
| | | QA | N/A |
| | | CHIEF ENG | N/A |
| | | CFN: | OL-017_revK_25A-35A.dwg |

ULTRAVOLT, INC.
1800 OCEAN AVE. FRNT, RONKONKOMA, N.Y. 11779
1-631-471-4444

OUTLINE
25A SERIES

PART NUMBER: OL-017 REV K

SCALE NONE DO NOT SCALE THIS DRAWING SHEET 1 OF 1