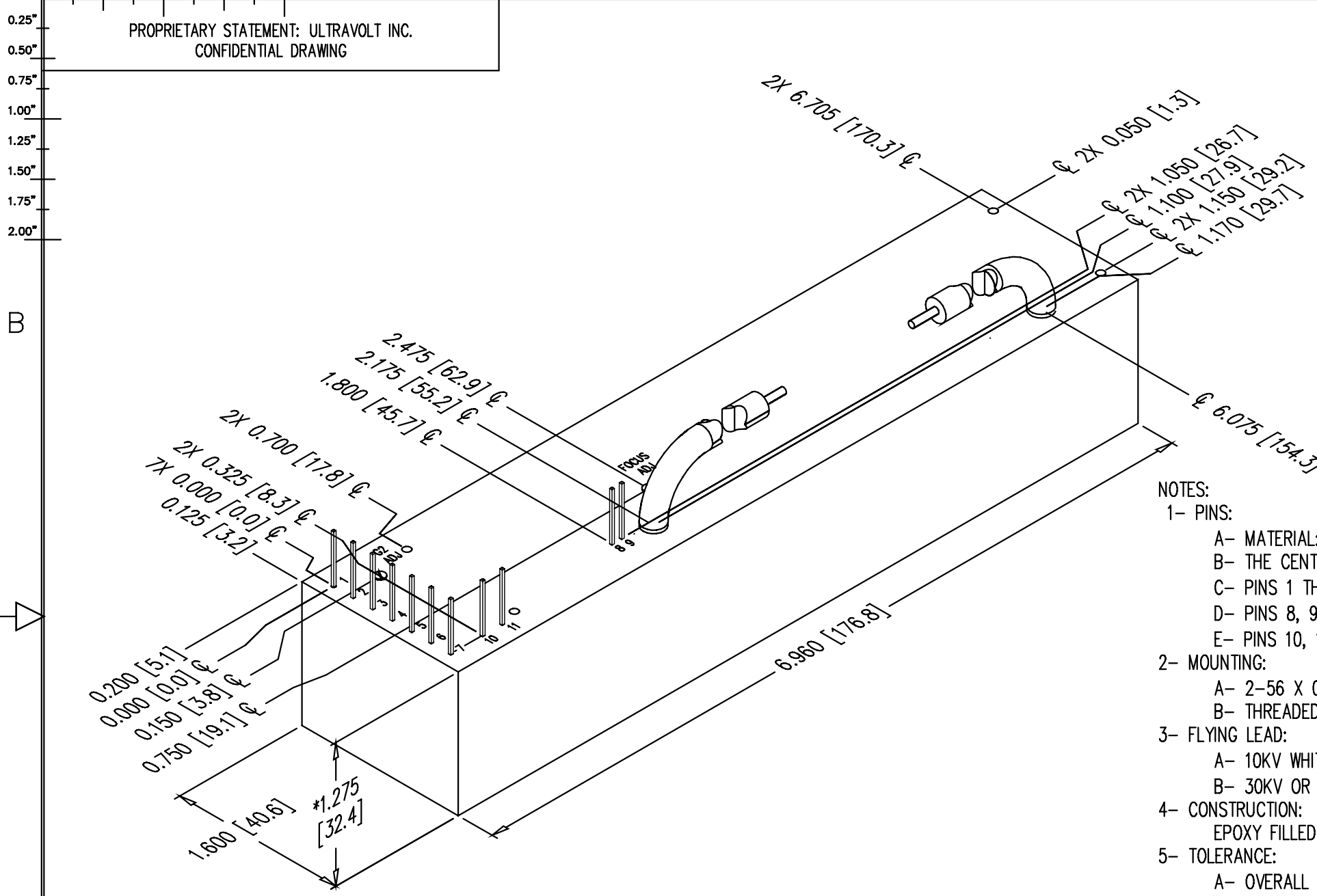


0.00" 0.25" 0.50" 0.75" 1.00" 1.25" 1.50" 1.75" 2.00"

PROPRIETARY STATEMENT: ULTRAVOLT INC.
CONFIDENTIAL DRAWING

B PART NUMBER: OL-026 REV J SH 1

REVISIONS				
LTR	DESCRIPTION	BY	DATE	APPD
A	NEW RELEASE	D.S.	97/05/29	J.M.
B	ADDED 2 MORE #2-56 HOLES, 6.20 DIM WAS 6.08, 2.025 WAS 2.05, 1.925 WAS 1.95, .35 WAS .36, .825 WAS .85, .125 WAS .15	D.S.	98/01/06	J.M.
C	REVISED CALLOUTS LOCATIONS	D.S.	98/11/19	J.M.
D	ADDED TITLE UNDER OUTLINE	D.S.	99/05/25	J.M.
E	ADDED METRIC DIMENSIONS	J.T.	99/8/16	J.M.
F	REVISED PER ECO #2743	SRO	3/1/02	D.P.
G	REVISED PER ECO #JV3135	SG	12/04/03	SRO
H	REVISED PER ECO #JV3146	SG	01/12/04	SRO
J	REVISED PER ECO #JV3245	RG	10/11/05	S.O.



NOTES:

- 1- PINS:
 - A- MATERIAL: GOLD PLATED 0.025 [0.64] SQ.
 - B- THE CENTER OF THE PINS AND MOUNTING HOLES ARE LOCATED FROM THE CENTER OF PIN 1.
 - C- PINS 1 THRU 7 SPACING 0.200 [5.08] ON CENTER, HEIGHT FROM COVER 0.280 [7.11] MIN.
 - D- PINS 8, 9 SPACING 0.100 [2.54] ON CENTER, HEIGHT FROM COVER 0.280 [7.11] MIN
 - E- PINS 10, 11 SPACING 0.200 [5.08] ON CENTER, HEIGHT FROM COVER 0.280 [7.11] MIN
- 2- MOUNTING:
 - A- 2-56 X 0.30 [7.62] DP UNC-2B THD 4 PLACES.
 - B- THREADED POST MAY NOT BE FLUSH TO COVER.
- 3- FLYING LEAD:
 - A- 10KV WHITE ϕ 0.187 [ϕ 4.8] MAX. APPROX. 18.00 [457.2] LONG.
 - B- 30KV OR 40KV RED ϕ 0.210 [ϕ 5.3] MAX. APPROX. 18.00 [457.2] LONG.
- 4- CONSTRUCTION:
 - EPOXY FILLED DAP BOX CERTIFIED TO ASTM-D-5948
- 5- TOLERANCE:
 - A- OVERALL +/-0.050 [1.27]
 - B- PIN TO PIN +/-0.015 [0.38]
 - C- MOUNTING HOLE LOCATION +/-0.025 [0.64]
- *6- 20 & 30 WATT VERSIONS ARE AN ADDITIONAL 0.062 [1.57] IN HEIGHT.
- *7- -M EQUIPPED UNITS ARE AN ADDITIONAL 0.030 [0.76] IN HEIGHT.

UNLESS OTHERWISE SPECIFIED DIMENSION ARE IN INCHES TOLERANCES ARE:			CUSTOMER	
2 PL DEC ± .02	FRACT ± 1/64	DATE	S. Orban	
3 PL DEC ± .010	ANGLES ± 2°	02/04/02	D. Parant	
HOLE DIA	TOLERANCES	MFG	N/A	
.0135 THRU .125	+ .004	MFG ENGR	N/A	
.126 THRU .250	+ .005	PROCESS	N/A	
.251 THRU .500	+ .008	QA	N/A	
.501 THRU .750	+ .008	CHIEF ENG	N/A	
.751 THRU 1.000	+ .010	OFF: OL-026_revJ_25A-35A_AUX.dwg		
1.001 THRU 2.000	+ .012			
	- .012			
DASH NUMBER	NEXT ASSY	USED ON		
APPLICATION				

ULTRAVOLT, INC.
1800 OCEAN AVE. FRNT, RONKONKOMA, N.Y. 11779
1-831-471-4444

OUTLINE
25A / 30A / 35A SERIES W / AUX

PART NUMBER: OL-026 REV J

SCALE NONE DO NOT SCALE THIS DRAWING SHEET 1 OF 1