

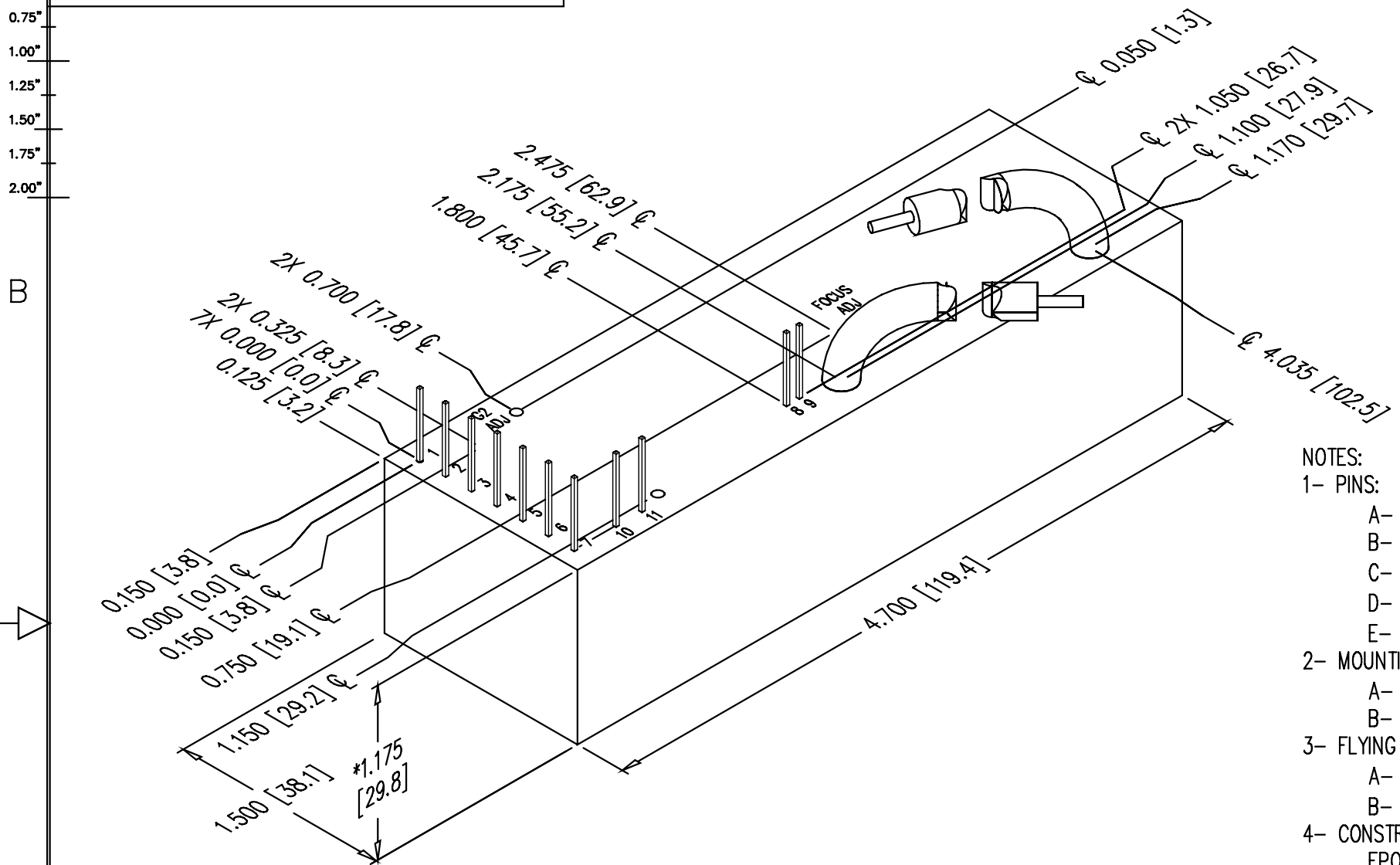
0.00" 0.25" 0.50" 0.75" 1.00" 1.25" 1.50" 1.75" 2.00"

2

PROPRIETARY STATEMENT: ULTRAVOLT INC.
CONFIDENTIAL DRAWING

B PART NUMBER: OL-027 REV J SH 1

REVISIONS				
LTR	DESCRIPTION	BY	DATE	APPD
A	NEW RELEASE	D.S.	97/05/03	J.M.
B	COTRRECTED PINS 10 & 11 DISTANCE	D.S.	97/06/03	J.M.
C	.18 DIM WAS .21, 4.14 WAS 4.10 2.025 WAS 2.05, 1.925 WAS 1.95, .30 WAS .32, .825 WAS .85, .125 WAS .15	D.S.	98/01/06	J.M.
D	REVISED CALLOUTS LOCATIONS	D.S.	98/11/19	J.M.
E	ADDED TITLE UNDER OUTLINE	D.S.	99/05/25	J.M.
F	ADDED METRIC DIMENSIONS	J.T.	99/8/16	J.M.
G	REVISED PER ECO #2743	SRO	3/1/02	D.P.
H	REVISED PER ECO #JV3135	SG	12/04/03	SRO
J	REVISED PER ECO #JV3245	RG	10/11/05	S.O.



NOTES:

- 1- PINS:
 - A- MATERIAL: GOLD PLATED 0.025 [0.64] SQ.
 - B- THE CENTER OF THE PINS AND MOUNTING HOLES ARE LOCATED FROM CENTER OF PIN 1.
 - C- PINS 1 THRU 7 SPACING 0.200 [5.08] ON CENTER, HEIGHT FROM COVER 0.280 [7.11] MIN
 - D- PINS 8, 9 SPACING 0.100 [2.54] ON CENTER, HEIGHT FROM COVER 0.280 [7.11] MIN.
 - E- PINS 10, 11 SPACING 0.200 [5.08] ON CENTER, HEIGHT FROM COVER 0.280 [7.11] MIN
- 2- MOUNTING:
 - A- 2-56 X 0.30 [7.62] DP UNC-2B THD 2 PLACES.
 - B- THREADED POST MAY NOT BE FLUSH TO COVER.
- 3- FLYING LEAD:
 - A- 10KV WHITE ϕ 0.187 [ϕ 4.8] MAX. APPROX. 18.00 [457.2] LONG.
 - B- 30KV OR 40KV RED ϕ 0.210 [ϕ 5.3] MAX. APPROX. 18.00 [457.2] LONG.
- 4- CONSTRUCTION:
 - EPOXY FILLED DAP BOX CERTIFIED TO ASTM-D-5948
- 5- TOLERANCE:
 - A- OVERALL +/-0.050 [1.27]
 - B- PIN TO PIN +/-0.015 [0.38]
 - C- MOUNTING HOLE LOCATION +/-0.025 [0.64]
- *6- 20 & 30 WATT VERSIONS ARE AN ADDITIONAL 0.062 [1.57] IN HEIGHT.
- *7- -M EQUIPPED UNITS ARE AN ADDITIONAL 0.030 [0.76] IN HEIGHT.

A

A

DASH NUMBER	NEXT ASSY	USED ON
APPLICATION		

UNLESS OTHERWISE SPECIFIED DIMENSION ARE IN INCHES TOLERANCES ARE:		CUSTOMER	
2 PL DEC ± .02	FRACT ± 1/64	DRAWN	S. Orban
3 PL DEC ± .010	ANGLES ± 2°	DATE	02/04/02
HOLE DIA	TOLERANCES	CHKD	D. Parant
.0135 THRU .125	+ .004	MFG	N/A
	- .004	MFG ENGR	N/A
.126 THRU .250	+ .005	PROCESS	N/A
	- .005	QA	N/A
.251 THRU .500	+ .008	CHIEF ENG	N/A
	- .008	QFN: OL-027_revJ_15A_AUX.dwg	
.501 THRU .750	+ .010		
	- .010		
.751 THRU 1.000	+ .012		
	- .012		

ULTRAVOLT, INC.
1800 OCEAN AVE. FRNT, RONKONKOMA, N.Y. 11779
1-831-471-4444

OUTLINE
15A SERIES W / AUX

PART NUMBER: OL-027 REV J

SCALE NONE DO NOT SCALE THIS DRAWING SHEET 1 OF 1

2

1