

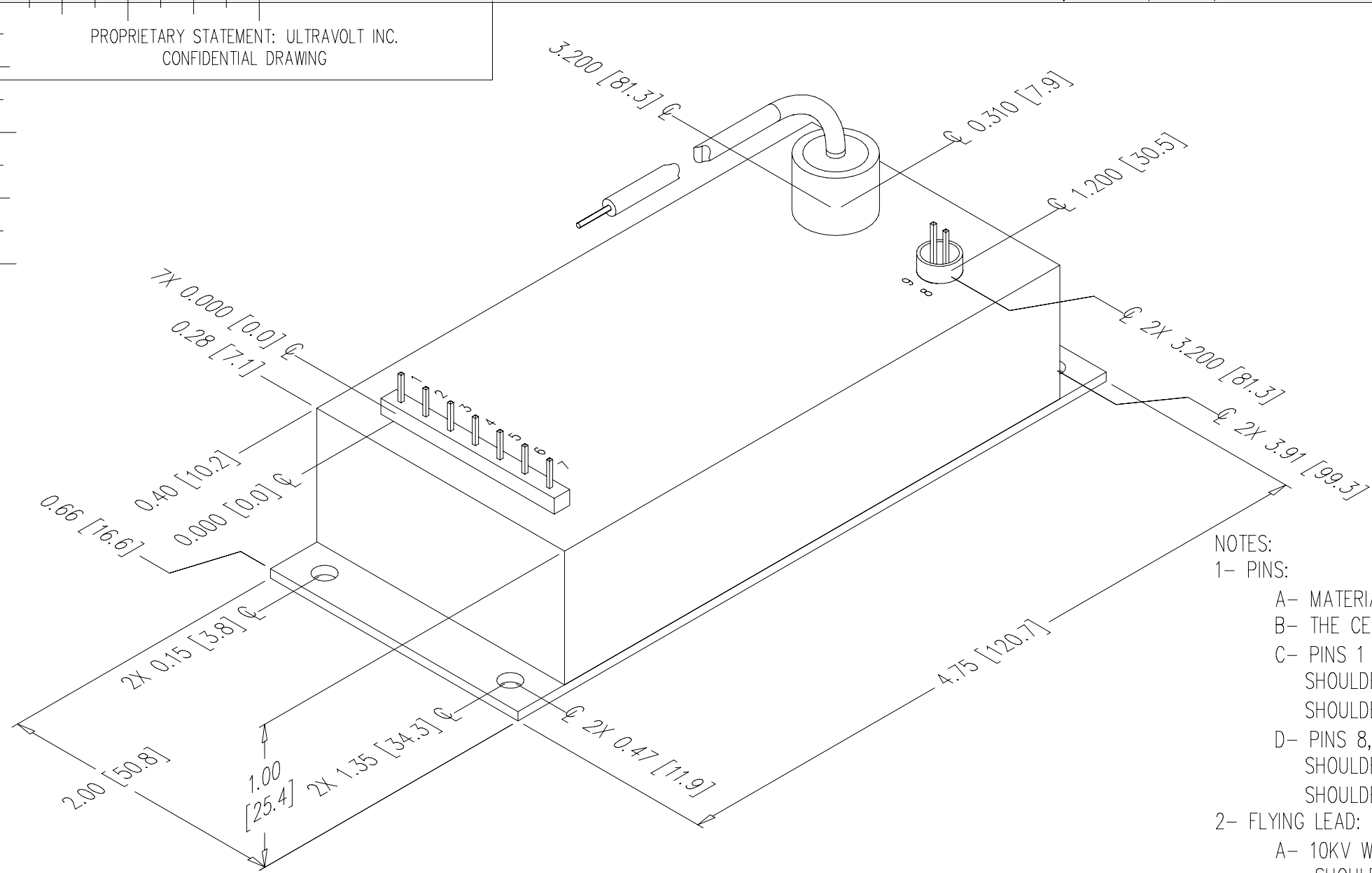
PROPRIETARY STATEMENT: ULTRAVOLT INC.
CONFIDENTIAL DRAWING

2

B	PART NUMBER:	OL-038	REV	A	SH	1
---	--------------	--------	-----	---	----	---

REVISIONS				
LTR	DESCRIPTION	BY	DATE	APPD
A	NEW RELEASE	SRO	9/29/04	J.M.

B



- NOTES:
- 1- PINS:
 - A- MATERIAL: GOLD PLATED 0.025 [0.64] SQ.
 - B- THE CENTER OF THE PINS AND MOUNTING HOLES ARE LOCATED FROM THE CENTER OF PIN 1.
 - C- PINS 1 THRU 7 SPACING 0.200 [5.08] ON CENTER, HEIGHT FROM COVER 0.280 [7.11] MIN. SHOULDER MATERIAL: DIALLYL PHTHALATE 94V0, SHOULDER SIZE: 0.125 [3.17] X 1.400 [35.56] X 0.110 [2.79] HEIGHT FROM COVER.
 - D- PINS 8, 9 SPACING 0.100 [2.54] ON CENTER, HEIGHT FROM COVER 0.280 [7.11] MIN. SHOULDER MATERIAL: TEFLON, SHOULDER SIZE: OD 0.27 [6.86] X ID 0.23 [5.71] X 0.220 [5.60] HEIGHT FROM COVER.
 - 2- FLYING LEAD:
 - A- 10KV WHITE ϕ 0.187 [ϕ 4.8] MAX. APPROX. 18.00 [457.2] LONG. SHOULDER MATERIAL: FR4, FILLED WITH EPOXY. SHOULDER SIZE: OD 0.50 [12.70] X ID 0.38 [9.52] X 0.40 [10.16] HEIGHT FROM COVER.
 - 3- MOUNTING:
 - A- FOUR HOLES ϕ 0.156 [ϕ 3.96] THROUGH A 0.062 [1.57] THK PLATE.
 - 4- CONSTRUCTION:
 - EPOXY FILLED ALUMINUM BOX CHEM FILM PER MIL-C-5541 CLASS 1A.
 - 5- TOLERANCE:
 - A- OVERALL +/-0.050 [1.27]
 - B- PIN TO PIN +/-0.015 [0.38]

A

A

DASH NUMBER	NEXT ASSY	USED ON
APPLICATION		

UNLESS OTHERWISE SPECIFIED DIMENSION ARE IN INCHES TOLERANCES ARE:		CUSTOMER	
2 PL DEC ± .02	FRACT ± 1/64	DRAWN	<i>S. Orban</i>
3 PL DEC ± .010	ANGLES ± 2°	CHKD	<i>G. McLaren</i>
HOLE DIA	TOLERANCES	MFG	<i>N/A</i>
.0135 THRU .125	+ .004 - .004	MFG ENGR	<i>D. Burkard</i>
.126 THRU .250	+ .005 - .005	PROCESS	<i>N/A</i>
.251 THRU .500	+ .006 - .006	QA	<i>Tony Chliek</i>
.501 THRU .750	+ .008 - .008	CHIEF ENG	<i>J. Morrison</i>
.751 THRU 1.000	+ .010 - .010	CFN: OL-038_revA_A-C-Z33_CAN.dwg	
1.001 THRU 2.000	+ .012 - .012		

ULTRAVOLT, INC.
1800 OCEAN AVE. FRNT, RONKONKOMA, N.Y. 11779
1-631-471-4444

OUTLINE A & C
Z33 OPTION SERIES
METAL CASE

PART NUMBER:	REV
OL-038	A

SCALE NONE DO NOT SCALE THIS DRAWING SHEET 1 OF 1

2

1