

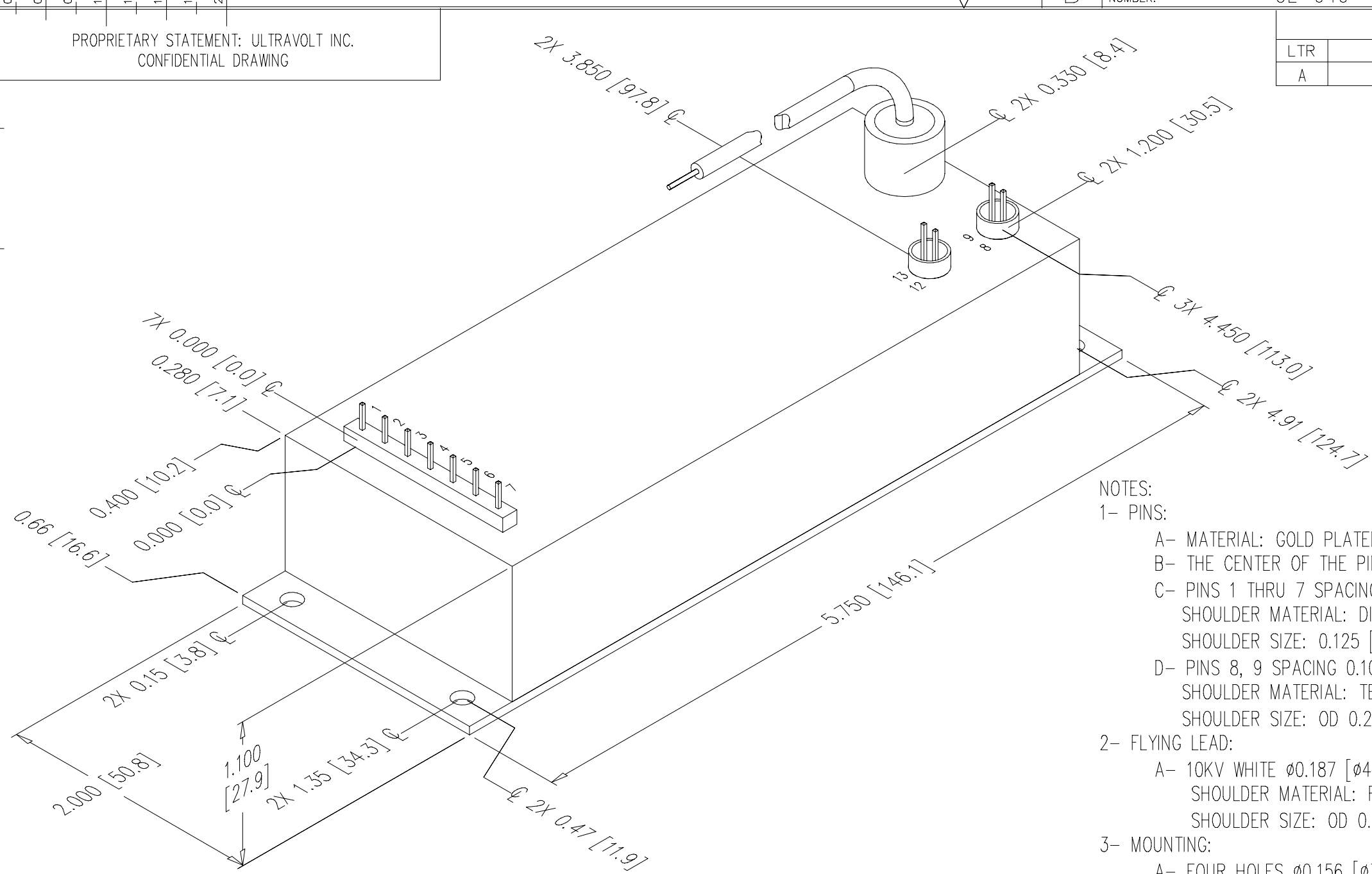
PROPRIETARY STATEMENT: ULTRAVOLT INC.
CONFIDENTIAL DRAWING

B	PART NUMBER:	OL-040	REV	A	SH	1
---	--------------	--------	-----	---	----	---

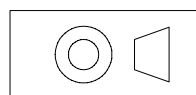
REVISIONS				
LTR	DESCRIPTION	BY	DATE	APPD
A	NEW RELEASE	SRO	9/29/04	

B

A



- NOTES:
- 1- PINS:
 - A- MATERIAL: GOLD PLATED 0.025 [0.64] SQ.
 - B- THE CENTER OF THE PINS AND MOUNTING HOLES ARE LOCATED FROM THE CENTER OF PIN 1.
 - C- PINS 1 THRU 7 SPACING 0.200 [5.08] ON CENTER, HEIGHT FROM COVER 0.280 [7.11] MIN. SHOULDER MATERIAL: DIALYL PHTHALATE 94V0, SHOULDER SIZE: 0.125 [3.17] X 1.400 [35.56] X 0.110 [2.79] HEIGHT FROM COVER.
 - D- PINS 8, 9 SPACING 0.100 [2.54] ON CENTER, HEIGHT FROM COVER 0.280 [7.11] MIN. SHOULDER MATERIAL: TEFLON, SHOULDER SIZE: OD 0.27 [6.86] X ID 0.23 [5.71] X 0.220 [5.60] HEIGHT FROM COVER.
 - 2- FLYING LEAD:
 - A- 10KV WHITE ϕ 0.187 [ϕ 4.8] MAX. APPROX. 18.00 [457.2] LONG. SHOULDER MATERIAL: FR4, FILLED WITH EPOXY. SHOULDER SIZE: OD 0.50 [12.70] X ID 0.38 [9.52] X 0.40 [10.16] HEIGHT FROM COVER.
 - 3- MOUNTING:
 - A- FOUR HOLES ϕ 0.156 [ϕ 3.96] THROUGH A 0.062 [1.57] THK PLATE.
 - 4- CONSTRUCTION:
 - EPOXY FILLED ALUMINUM BOX CHEM FILM PER MIL-C-5541 CLASS 1A.
 - 5- TOLERANCE:
 - A- OVERALL +/-0.050 [1.27]
 - B- PIN TO PIN +/-0.015 [0.38]



UNLESS OTHERWISE SPECIFIED DIMENSION ARE IN INCHES TOLERANCES ARE:			CUSTOMER		
			DRAWN	S. Orban	DATE
			CHKD	G. McLaren	10/12/04
			MFG	N/A	
			MFG ENGR	D. Burkard	10/13/04
			PROCESS	N/A	
			QA	Tony Chliek	10/13/04
			CHIEF ENG	J. Morrison	10/20/04
			CFN:	OL-040_revA_F-Z33_CAN.dwg	
HOLE DIA	TOLERANCES				
.0135 THRU .125	+.004 -.004				
.126 THRU .250	+.005 -.005				
.251 THRU .500	+.006 -.006				
.501 THRU .750	+.008 -.008				
.751 THRU 1.000	+.010 -.010				
1.001 THRU 2.000	+.012 -.012				
DASH NUMBER	NEXT ASSY	USED ON			
APPLICATION					

ULTRAVOLT, INC.
1800 OCEAN AVE. FRNT, RONKONKOMA, N.Y. 11779
1-631-471-4444

OUTLINE
F SERIES
METAL CASE

PART NUMBER: OL-040 REV A

SCALE NONE DO NOT SCALE THIS DRAWING SHEET 1 OF 1

2

2

1