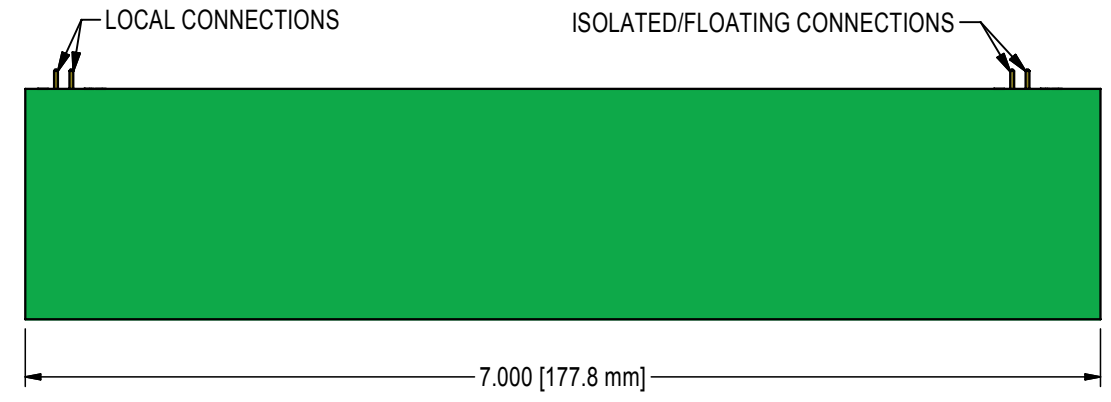
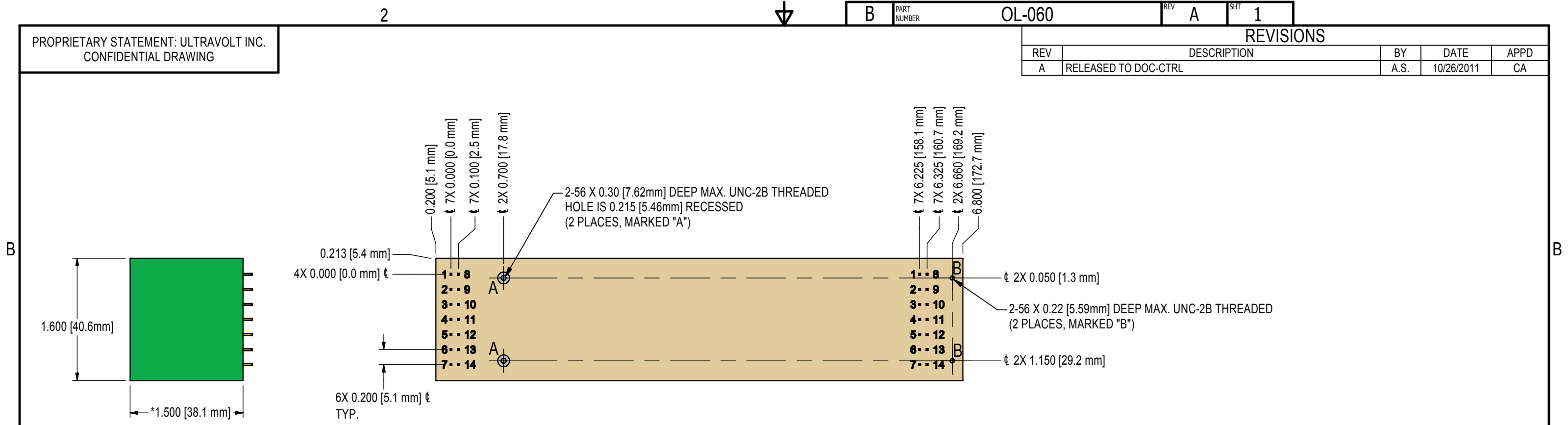


PROPRIETARY STATEMENT: ULTRAVOLT INC.
CONFIDENTIAL DRAWING

REVISIONS				
REV	DESCRIPTION	BY	DATE	APPD
A	RELEASED TO DOC-CTRL	A.S.	10/26/2011	CA



- NOTES:
- PINS:
 - MATERIAL: GOLD PLATED 0.025 [0.64mm] SQUARE.
 - THE CENTER OF THE PINS AND MOUNTING HOLES ARE LOCATED FROM CENTER OF PIN 1 ON THE LOCAL CONNECTOR.
 - PINS 1 THRU 14 SPACING 0.100 [2.54mm] X 0.200 [5.08mm] ON CENTER, HEIGHT FROM COVER 0.300 [7.62mm] MIN.
 - MOUNTING:
 - 2-56X 0.30 [7.62mm] DEEP UNC-2B THREADED, 2 PLACES, MARKED "A".
 - 2-56X 0.22 [5.59mm] DEEP UNC-2B THREADED, 2 PLACES, MARKED "B".
 - THREADED POSTS MIGHT BE RECESSED FROM COVER.
 - CONSTRUCTION:
 - ENCAPSULANT FILLED DAP BOX CERTIFIED TO ASTM-D-5948.
 - TOLERANCES:
 - OVERALL +/-0.050 [1.27mm].
 - PIN TO PIN +/-0.015 [0.38mm].
 - MOUNTING HOLES LOCATION +/- 0.030 [0.76mm].
 - 24 WATT VERSIONS ARE AN ADDITIONAL 0.073 [1.85mm] IN HEIGHT.
 - M EQUIPPED UNITS ARE AN ADDITIONAL 0.030 [0.76mm] IN HEIGHT.

UNLESS OTHERWISE SPECIFIED DIMENSION ARE IN INCHES [mm]			CUSTOMER		
TOLERANCES ARE:			DRAWN	Adrian Siu	DATE
2 PL DEC ± .02			3/17/2010		
3 PL DEC ± .010			CSD	Scott Willson	10/31/2011
HOLE DIA			MFG	N/A	
TOLERANCES			MFG ENGR	Lloys Hasluck	10/28/2011
.0135 THRU .125			MARKETING	Stefanie Turek	10/28/2011
.126 THRU .250			QA	Ralph Palotta	10/28/2011
.251 THRU .500			CHIEF ENG	Carlos Alicea	10/28/2011
.501 THRU .750			CFN: OL-060_revA_30EFL-IO-RB.idw		
.751 THRU 1.000					
1.001 THRU 2.000					
DASH NUMBER	NEXT ASSY	USED ON			
APPLICATION					

ULTRAVOLT, INC.
1800 OCEAN AVE. FRNT, RONKONKOMA, N.Y. 11779
1-631-471-4444

OUTLINE,
30EFL-IO-RB SERIES

PART NUMBER: **OL-060** REV **A**

SCALE NONE DO NOT SCALE THIS DRAWING SHEET 1 OF 2

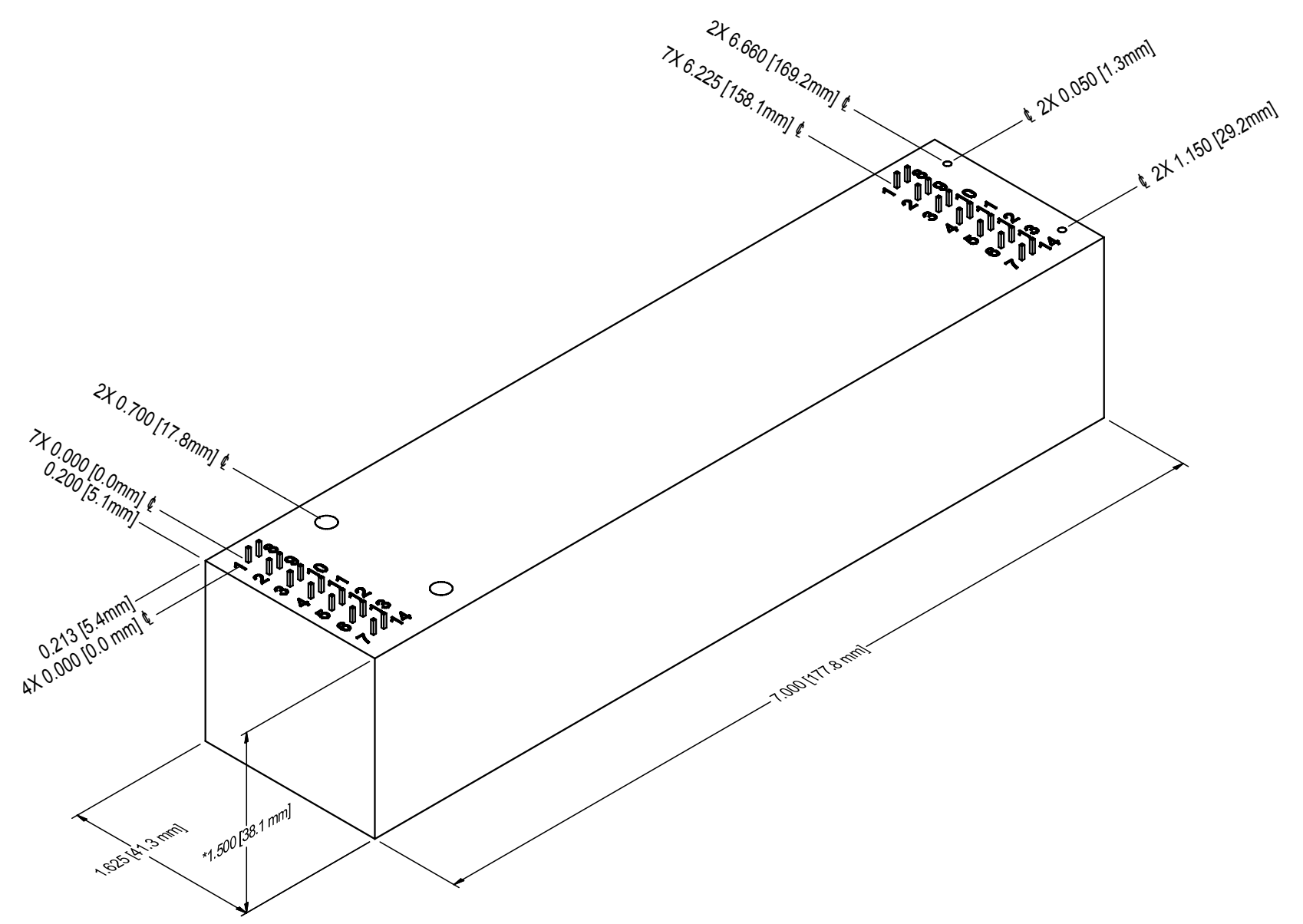


PROPRIETARY STATEMENT: ULTRAVOLT INC.
CONFIDENTIAL DRAWING

B



A



B



A

ULTRAVOLT, INC.			
1800 OCEAN AVE. FRNT, RONKONKOMA, N.Y. 11779 1-631-471-4444			
B	PART NUMBER: OL-060		REV A
SCALE	NONE	DO NOT SCALE THIS DRAWING	SHEET 2 OF 2

CFN: OL-060_revA_30EFL-IO-RB.idw

