

# SECTION 7

## PARTS AND SCHEMATICS

### 7.1 DRAWINGS

The following assembly drawings (with parts lists) and schematics are in the arrangement shown below.

### 7.2 ORDERING PARTS

When ordering spare parts, please specify part number, circuit reference, board, serial number of unit, and if applicable, the function performed.

### 7.3 ADDENDA

Under Wavetek's product improvement program, the latest electronic designs and circuits are incorporated into each Wavetek instrument as quickly as development and testing permit. Because of the time needed to compose and print instruction manuals, it is not always possible to include the most recent changes in the initial printing. Whenever this occurs, addendum pages are prepared to summarize the changes made and are inserted immediately inside the rear cover. If no such pages exist, the manual is correct as printed.

	Drawing No.
CHASSIS	
Schematic	0004-00-0054
Assembly Drawing	0102-00-0313
Parts List	1101-00-0054
MAIN BOARD	
Schematic	0103-00-0126
Assembly Drawing	0101-00-0126
Parts List	1100-00-0126
SWEEP BOARD	
Schematic	0103-00-0123
Assembly Drawing	0101-00-0123
Parts List	1100-00-0123

#### NOTE

*Wavetek considers the XCG board a factory repairable only item; therefore, XCG schematic, drawing and parts list are not included in this manual.*

8

7

6

5

4

THIS DOCUMENT CONTAINS PROPRIETARY INFORMATION AND DESIGN RIGHTS BELONGING TO WAVETEK AND MAY NOT BE REPRODUCED FOR ANY REASON EXCEPT CALIBRATION, OPERATION, AND MAINTENANCE WITHOUT WRITTEN AUTHORIZATION.

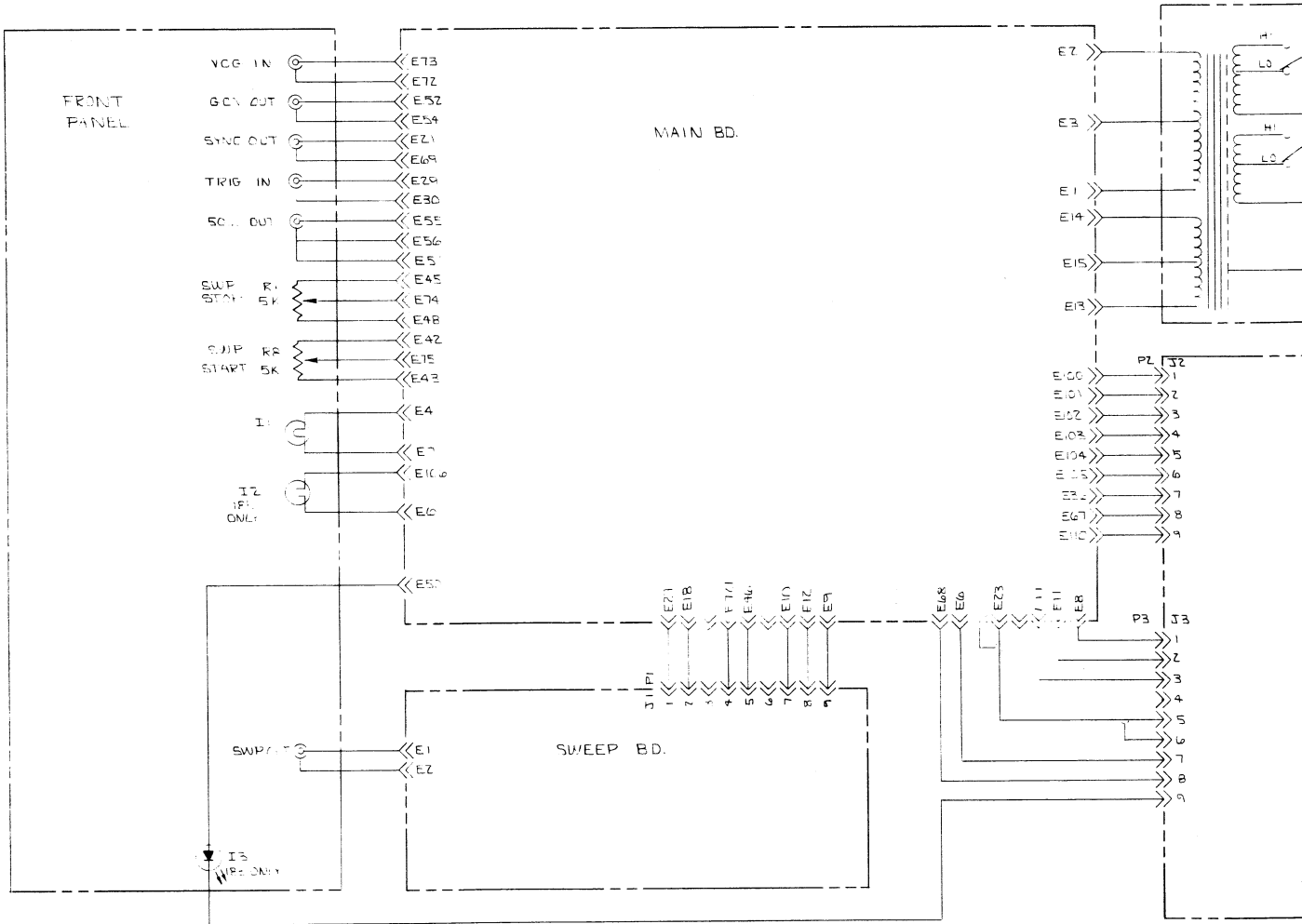
D

C

→

B

A



NOTE: UNLESS OTHERWISE SPECIFIED

8

7

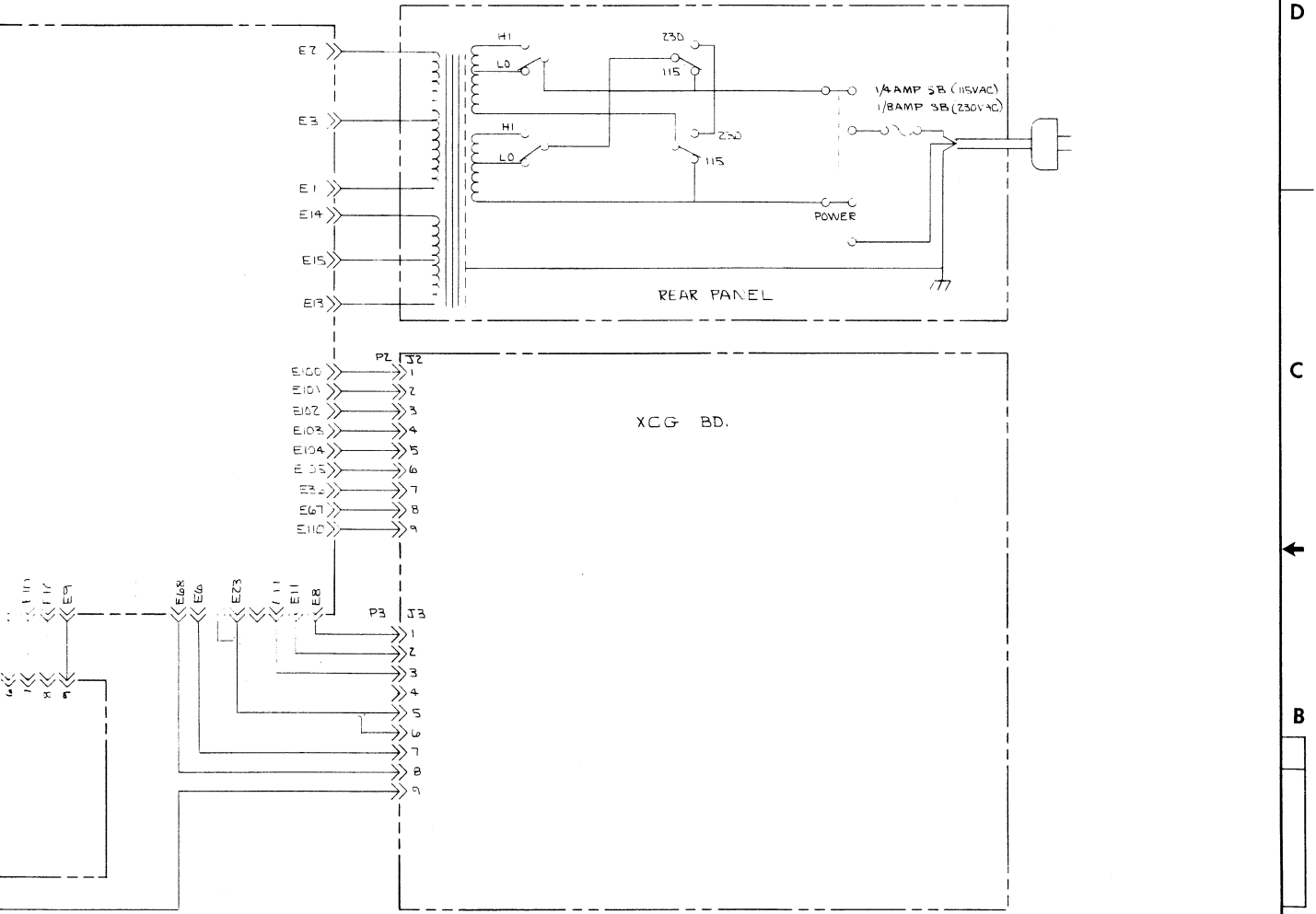
6

5

↑

4

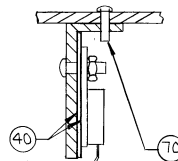
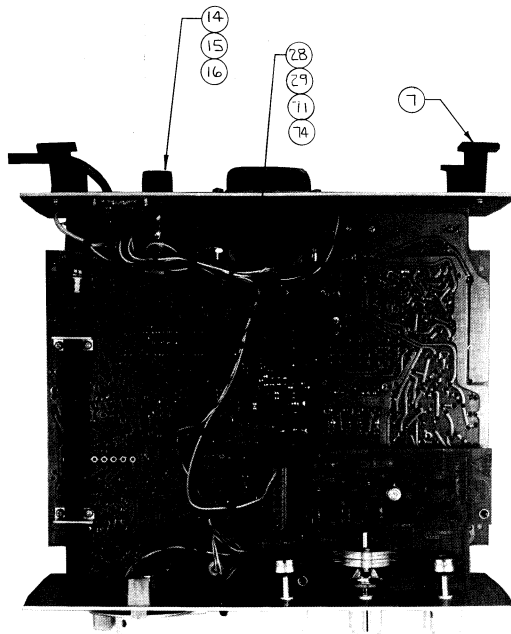
REV	ECN	BY	DATE	APP
A	REVISED PER ENG MARK-UP	BA	8-25	



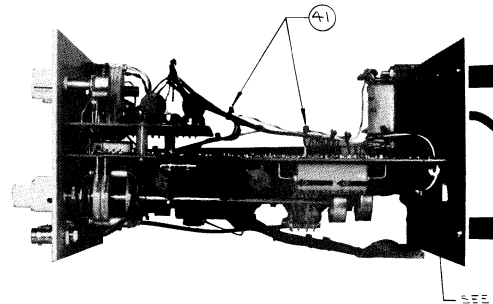
REMOVE ALL BURRS AND BREAK SHARP EDGES	DRAWN: BA	DATE: 7-25-75	<b>WAVETEK</b> SAN DIEGO • CALIFORNIA
	PROJENGR: <i>Mark To</i>	RELEASE APPROV: <i>BA</i>	
MATERIAL:	TOLERANCE UNLESS OTHERWISE SPECIFIED XXX - 010 ANGLES - 1 XX - 030		MODEL NO: 183 184 185
FINISH WAVETEK PROCESS	DO NOT SCALE DWG	SCALE: <i>1</i>	DWG NO: <i>0004-00-0054</i>
		CODE IDENT: 23338	REV: A
			SHEET 1 OF 1

THIS DOCUMENT CONTAINS PROPRIETARY INFORMATION AND DESIGN RIGHTS BELONGING TO WAVETEK AND MAY NOT BE REPRODUCED FOR ANY REASON EXCEPT CALIBRATION, OPERATION, AND MAINTENANCE WITHOUT WRITTEN AUTHORIZATION.

D

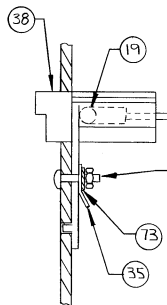


DETAIL 'A'

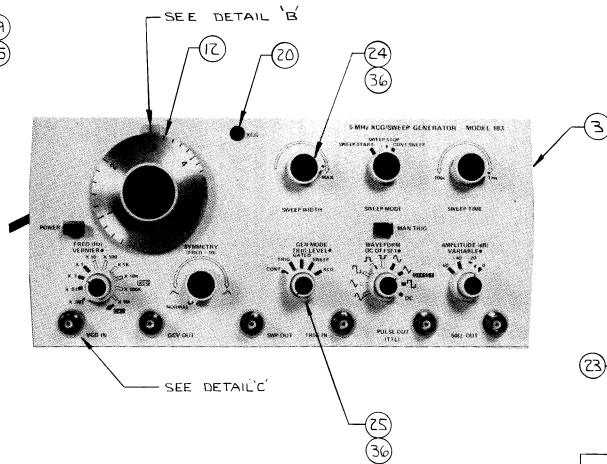


C

B

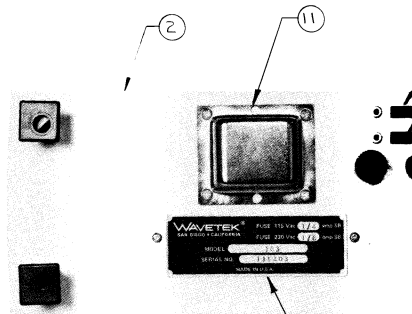


DETAIL 'B'

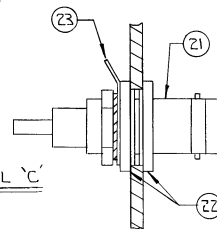


SEE DETAIL 'B'

SEE DETAIL 'C'



A



DETAIL 'C'

NOTE: UNLESS OTHERWISE SPECIFIED

5

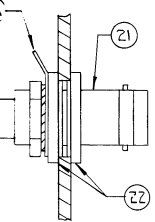
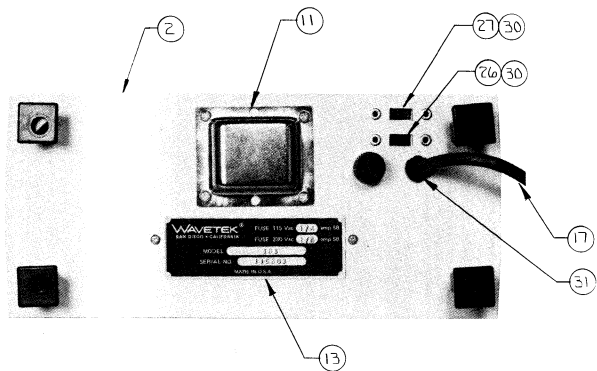
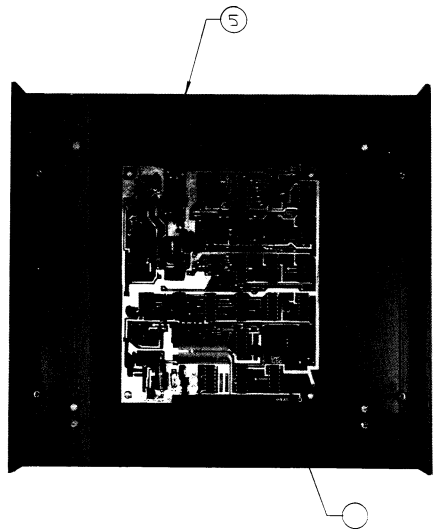
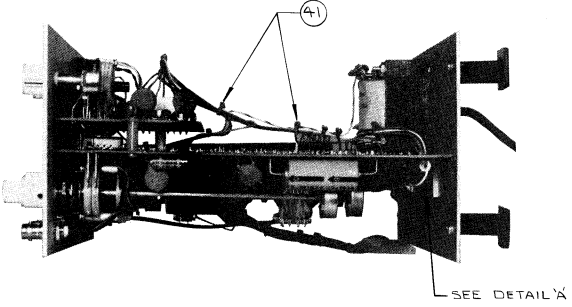
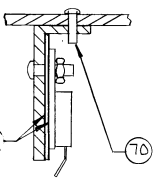
4

3

2

1

REV ECN BY DATE APP



REMOVE ALL BURRS AND BREAK SHARP EDGES		DRAWN BA	DATE 8-12-73	<b>WAVETEK</b> SAN DIEGO • CALIFORNIA	
MATERIAL	PROFENGR	RELEASE APPROV		TITLE CHASSIS ASSEMBLY	
FINISH WAVETEK PROCESS		TOLERANCE UNLESS OTHERWISE SPECIFIED XXX .010 ANGLES .1 XX .030		MODEL NO 184 183	
DO NOT SCALE DWG		SCALE		DWG NO 010J-00-0313	REV
				CODE 23338	SHEET / OF /

5

4

3

2

1

D

C

B

A

8

7

6

5

↓

4

THIS DOCUMENT CONTAINS PROPRIETARY INFORMATION AND DESIGN RIGHTS BELONGING TO WAVETEK AND MAY NOT BE REPRODUCED FOR ANY REASON EXCEPT CALIBRATION, OPERATION, AND MAINTENANCE WITHOUT WRITTEN AUTHORIZATION.

D

C

B

A

REFERENCE DESIGNATORS	PART
NONE	DIAL
NONE	TRNA
NONE	END
NONE	PLAT
NONE	INDL
NONE	CUVE
NONE	EXPA
NONE	POST
NONE	CUVE
NONE	PANE
NONE	PANE
NONE	FAV
NONE	FAV
NONE	CUVE
NONE	BNC
NONE	TECH
NONE	TECH
NONE	SULU
NONE	CUVE

**WAVETEK PARTS LIST** TITLE STU CHASSI

REFERENCE DESIGNATORS	PART
NONE	STU
NONE	CUVE
NONE	LAMP
NONE	FUSE
NONE	FUSE
NONE	DISP
NONE	STAN
NONE	STAN
NONE	MAIL
NONE	SPEE
NONE	WASP
NONE	STRE
NONE	LEG
NONE	SH A
NONE	SH I
NONE	SULU
NONE	PAP

**WAVETEK PARTS LIST** TITLE STU CHASSI

NOTE: UNLESS OTHERWISE SPECIFIED

8

7

6

5

↑

4

REFERENCE DESIGNATORS	PART DESCRIPTION	QWIG+FFGR+PART-NO	FFGR	WAVETEK NO.	QTY/PI
NONE	DIAL ASSY	1201-00-0025	KVTK	1201-00-0025	1
NONE	TRANSFORMER	5600-00-0022	KVTK	1204-00-0083	1
NONE	END BELL	110-333	KVTK	1400-00-0174	1
NONE	PLATE, NAME	139-305	KVTK	1400-00-2100	1
NONE	INDICATOR, DIAL	140-303	KVTK	1400-00-4970	1
NONE	COVER, TOP	180-300-1	KVTK	1400-00-5000	1
NONE	EXPANDER	180-301	KVTK	1400-00-5010	2
NONE	POST	180-302	KVTK	1400-00-5020	4
NONE	COVER, BOTTOM	180-300-2	KVTK	1400-00-5050	1
NONE	PANEL, REAR	182-301	KVTK	1400-00-5113	1
NONE	PANEL, FT	182-306	KVTK	1400-00-5120	1
NONE	TAG, SERIAL	180-310	KVTK	1400-00-5390	1
NONE	LOCK HOLDER	1400-00-5409	KVTK	1400-00-5409	1
NONE	BVC LOCK	KC-1946	KING	2100-01-0002	6
NONE	TERM, LOCK LUG	1414-0	SMITH	2100-04-0008	1
NONE	TERM, LOCK LUG	1414-0	SMITH	2100-04-0009	1
NONE	SOLDER LUG	1447	SMITH	2100-04-0012	6
NONE	LOCK	60546-B	APP	2100-05-0017	2

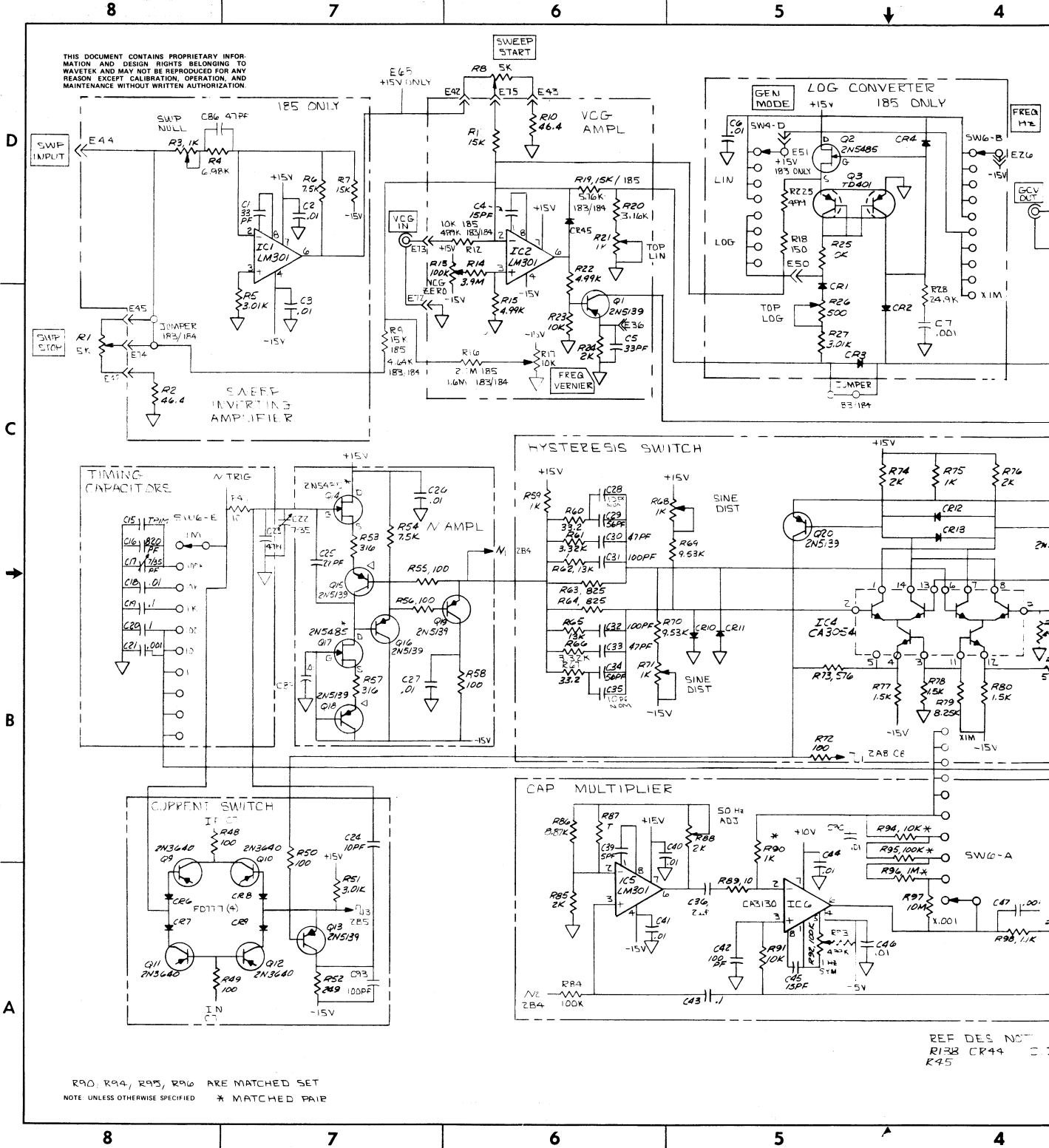
<b>WAVETEK PARTS LIST</b>	TITLE STD CHASSIS	ASSEMBLY NO. 1101-00-0054 PAGE: 1	REV
---------------------------	----------------------	---	-----

REFERENCE DESIGNATORS	PART DESCRIPTION	QWIG+FFGR+PART-NO	FFGR	WAVETEK NO.	QTY/PI
NONE	STD KNOB	PH-67-1-SH-M	HUGAN	2400-01-0008	4
NONE	COAX KNOB SET	ND-67-1-SH-M-H-Y	HUGAN	2400-01-0009	4
NONE	LAMP	CM7-7876	CHIN	2400-02-0013	1
NONE	FUSE, 125V, 1/4A, 50	315-250	LITFO	2400-05-0008	1
NONE	FUSE HULL	345001	LITFO	2400-05-0012	1
NONE	DUSHING NYLONER	4L2F	THORN	2800-01-0002	6
NONE	STANDOFF	1475-F03-F05-R32	UNJCP	2800-02-0010	4
NONE	STANDOFF	1495-F03-F05-440	UNJCP	2800-02-0011	4
NONE	RAIL ASSY W/FT	180-500	KVTK	2800-08-0010	1
NONE	SPEED-UP, SELF RETAIN	C/444-R52-0	TIH	2800-09-0005	6
NONE	MASPER, SHOULDER	266A	SMITH	2800-27-0004	12
NONE	STRAIN RELIEF BUSH	SH68-1	HFYCD	2800-37-0003	1
NONE	LEU	TIL-220	TI	4899-00-0006	1
NONE	SA ASSY SLIDE HJ-LU	SH622-FI-HK	GIL	5105-00-0001	1
NONE	SWITCH ASSY SLIDE	46250-LF	SKLEP	5105-00-0002	1
NONE	SOLDER GUARD	46250-LF-SG	SKLEP	5105-00-0001	2
NONE	PWR CORD	0-7785-00R-6Y	PACRO	6001-80-0004	1

<b>WAVETEK PARTS LIST</b>	TITLE STD CHASSIS	ASSEMBLY NO. 1101-00-0054 PAGE: 2	REV
---------------------------	----------------------	---	-----

REMOVE ALL BURRS AND BREAK SHARP EDGES	DRAWN	DATE	<b>WAVETEK</b> SAN DIEGO • CALIFORNIA		
MATERIAL	PROJENGR		TITLE <b>CHASSIS</b>		
	RELEASE APPROV				
FINISH WAVETEK PROCESS	TOLERANCE UNLESS OTHERWISE SPECIFIED XXX .010 ANGLES .1° XX .030		MODEL NO. <b>183</b>		
	DO NOT SCALE DWG				DWG NO. <b>1101-00-0054</b>
	SCALE				REV
	CODE IDENT	<b>23338</b>	SHEET	OF	

THIS DOCUMENT CONTAINS PROPRIETARY INFORMATION AND DESIGN RIGHTS BELONGING TO WAVETEK AND MAY NOT BE REPRODUCED FOR ANY REASON EXCEPT CALIBRATION, OPERATION, AND MAINTENANCE WITHOUT WRITTEN AUTHORIZATION.

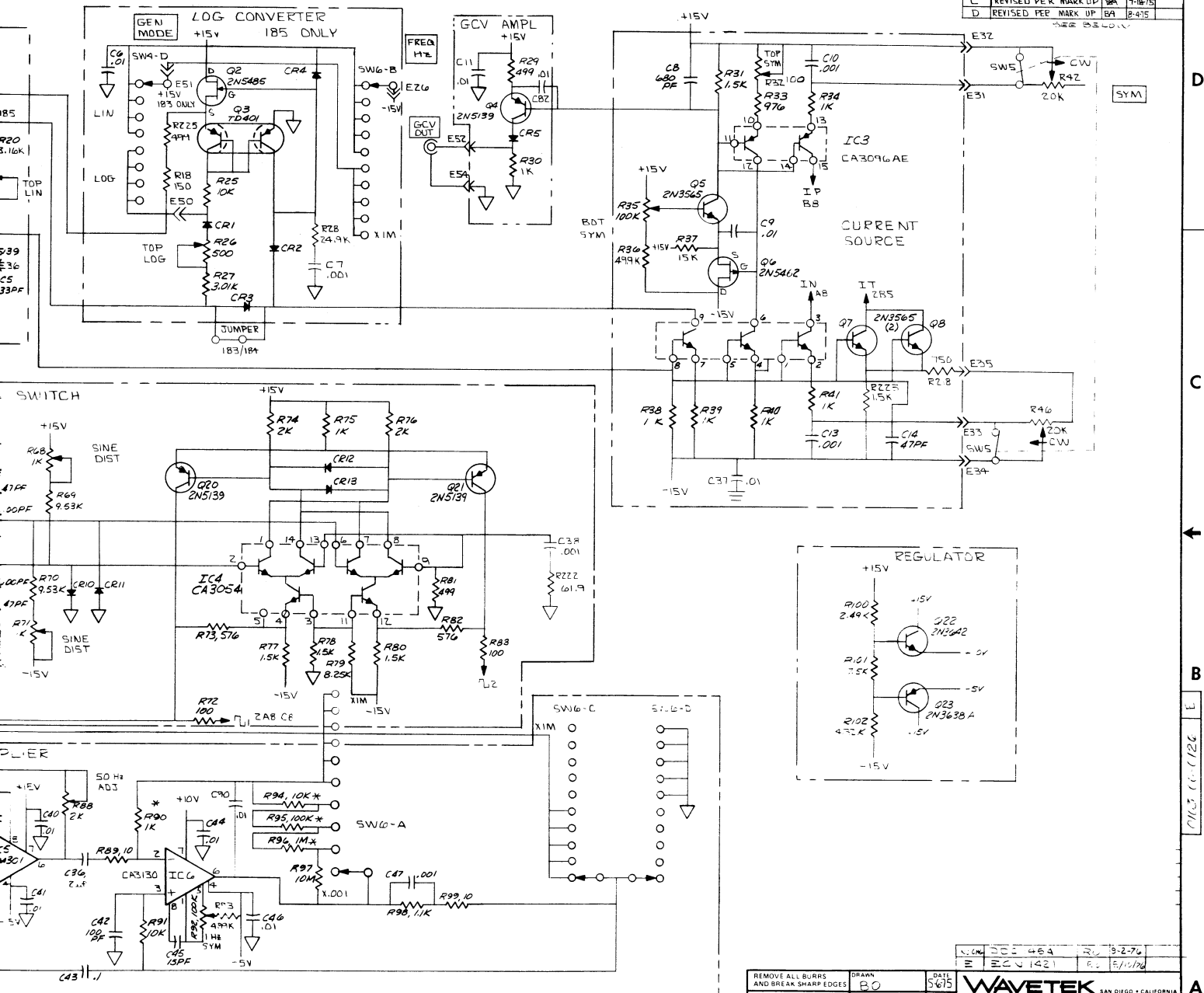


R90, R94, R95, R96 ARE MATCHED SET  
NOTE: UNLESS OTHERWISE SPECIFIED \* MATCHED PAIR

REF DES NOT  
R128 CR44  
R45



REV	ECN	BY	DATE	APP
A	REVISED PER MARK UP			
B	REVISED PER MARK UP	R.A.	6-20-75	
C	REVISED PER MARK UP	BA	7-18-75	
D	REVISED PER MARK UP	BA	8-4-75	



REF DES NOT USED      LAST REF USED  
 R138 CR44 C12      C94  
 R45                      R225  
                             Q53  
                             CR45  
                             IC 12

REMOVE ALL BURRS AND BREAK SHARP EDGES	DRAWN B.D.	DATE 5/6/75	WAVETEK SAN DIEGO • CALIFORNIA
MATERIAL	PRODUCED <i>[Signature]</i>	DATE 12/2/75	TITLE SCHEMATIC MAIN BOARD
FINISH WAVETEK PROCESS	RELEASE APPROV	TOLERANCE UNLESS OTHERWISE SPECIFIED XXX - 010 ANGLES - 1 XX - 030	MODEL NO 183 184 185
DO NOT SCALE DWG	SCALE	DO NOT SCALE DWG	DWG NO 0103-00-0206
		CODE IDENT 23338	REV E
			SHEET 1 OF 5

D  
C  
B  
A  
E  
1103-00-126

5

4

3

2

1

5

4

3

2

1

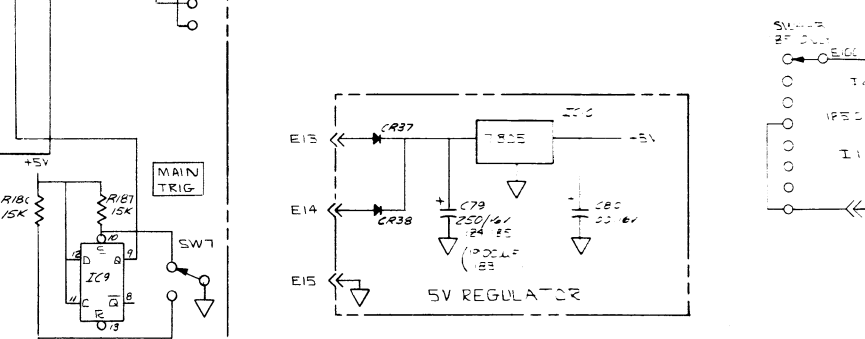
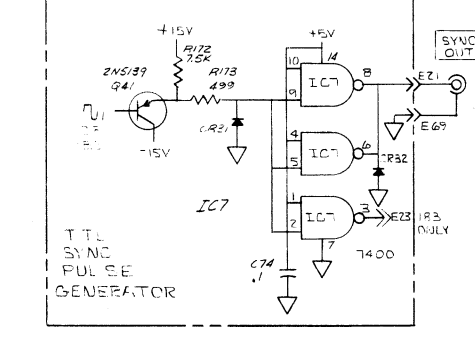
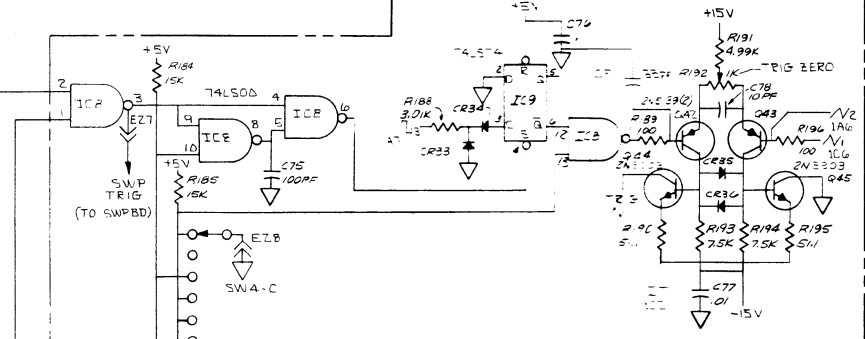
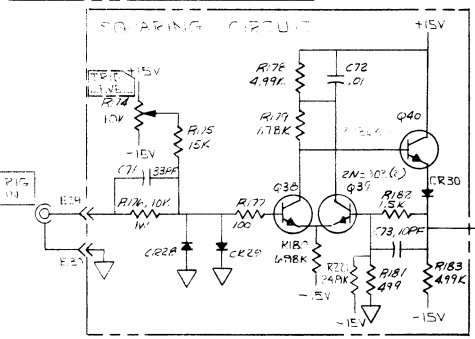
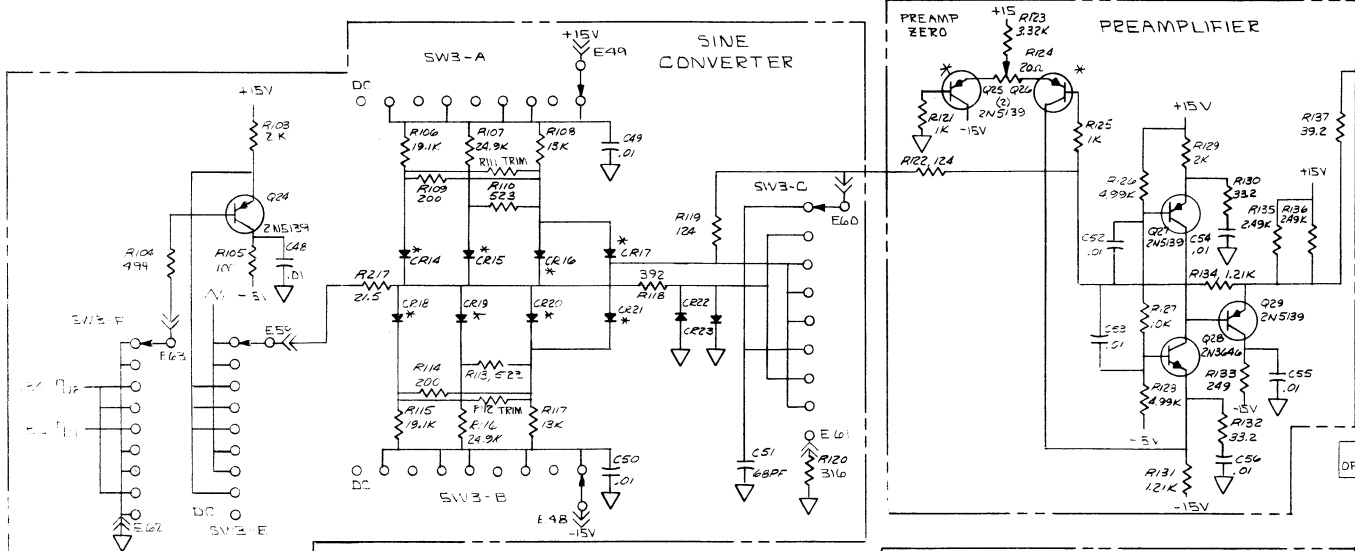
THIS DOCUMENT CONTAINS PROPRIETARY INFORMATION AND DESIGN RIGHTS BELONGING TO WAVETEK AND MAY NOT BE REPRODUCED FOR ANY REASON EXCEPT CALIBRATION, OPERATION, AND MAINTENANCE WITHOUT WRITTEN AUTHORIZATION.

D

C

B

A

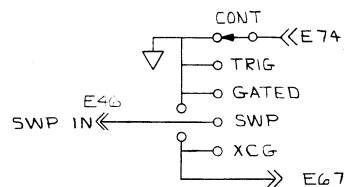
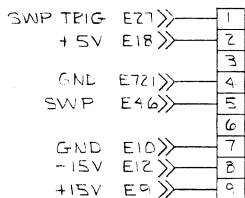


\* FD 777 MATCHED SET OF 8  
NOTE: UNLESS OTHERWISE SPECIFIED



THIS DOCUMENT CONTAINS PROPRIETARY INFORMATION AND DESIGN RIGHTS BELONGING TO WAVETEK AND MAY NOT BE REPRODUCED FOR ANY REASON EXCEPT CALIBRATION, OPERATION, AND MAINTENANCE WITHOUT WRITTEN AUTHORIZATION.

D



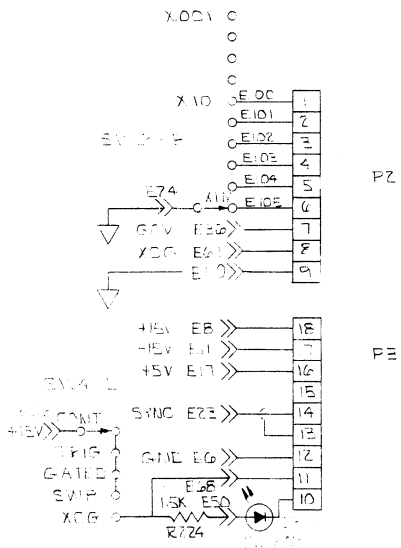
SW4 - A

C

P1 TO SWEEP BD  
ALL MODELS

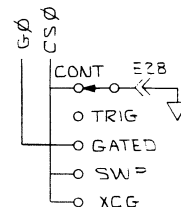
GEN MODE SWITCH  
MODEL 183

B



P2

P3

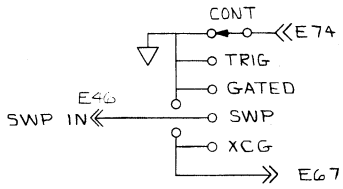


SW4 - C

A

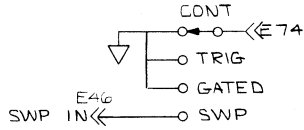
CONNECTORS TO XCG BD.  
183 ONLY

NOTE: UNLESS OTHERWISE SPECIFIED



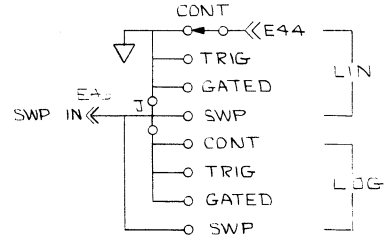
SW4 - A

GEN MODE SWITCH  
MODEL 183



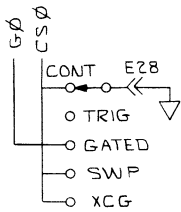
SW4 - A

GEN MODE SWITCH  
MODEL 184

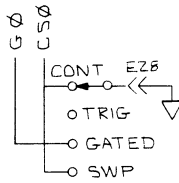


SW4 - A

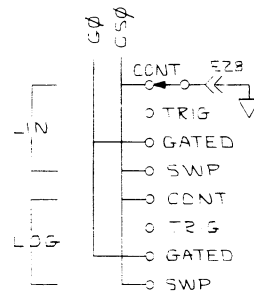
GEN MODE SWITCH  
MODEL 185



SW4 - C



SW4 - C



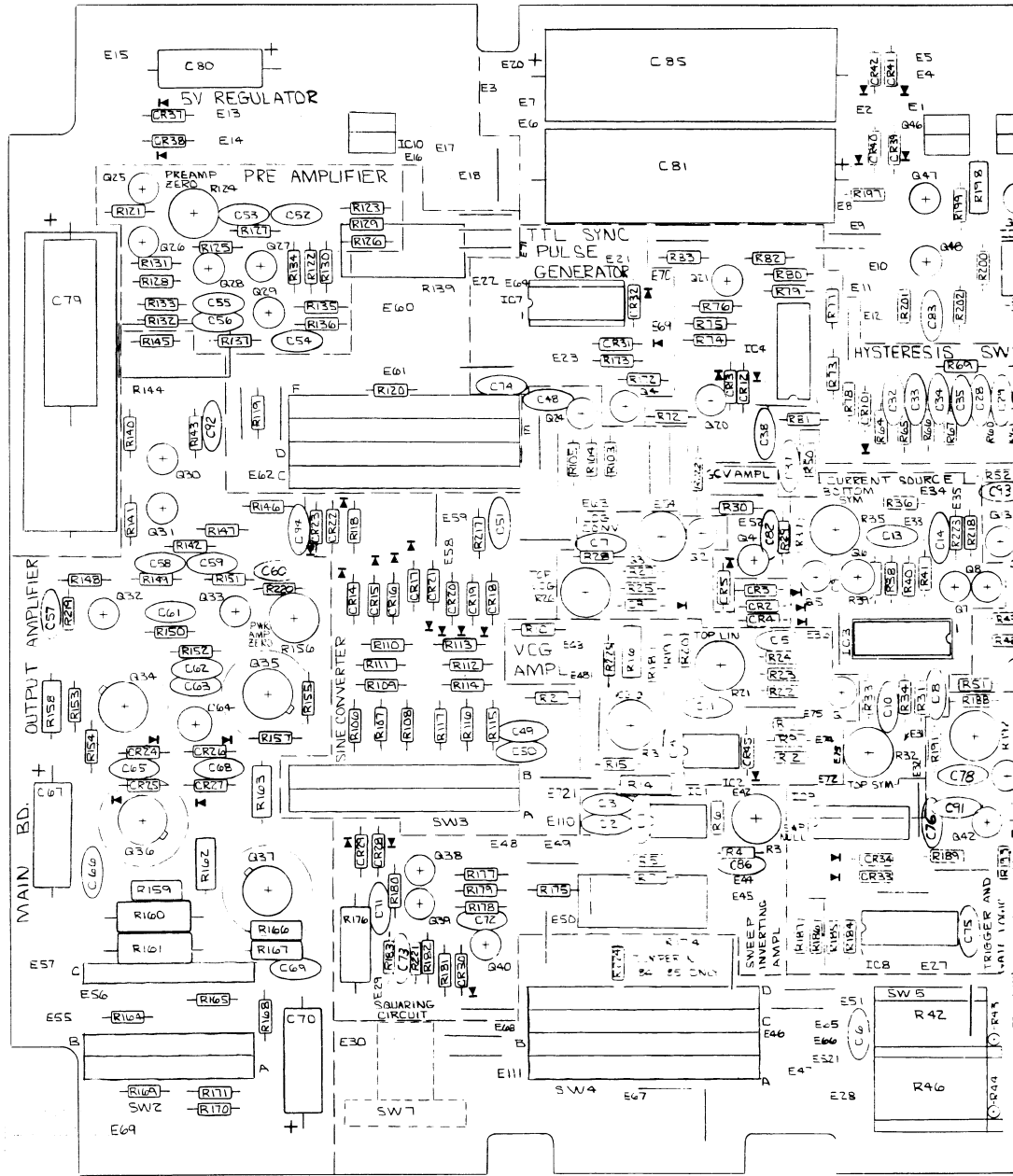
SW4 - C

REMOVE ALL BURRS AND BREAK SHARP EDGES	DRAWN [Signature]	DATE 5-6-75	<b>WAVETEK</b> SAN DIEGO • CALIFORNIA	
MATERIAL	PROJ ENGR [Signature]	RELEASE APPROV [Signature]	TITLE SCHEMATIC MAIN BOARD	
FINISH WAVETEK PROCESS	TOLERANCE UNLESS OTHERWISE SPECIFIED XXX - 010 ANGLES - 11 XX - 020		MODEL NO 183 184 185	DWG NO 00-0000
SCALE	DO NOT SCALE DWG	CODE IDENT 23338	SHEET 3	REV OF 3

D  
C  
B  
A

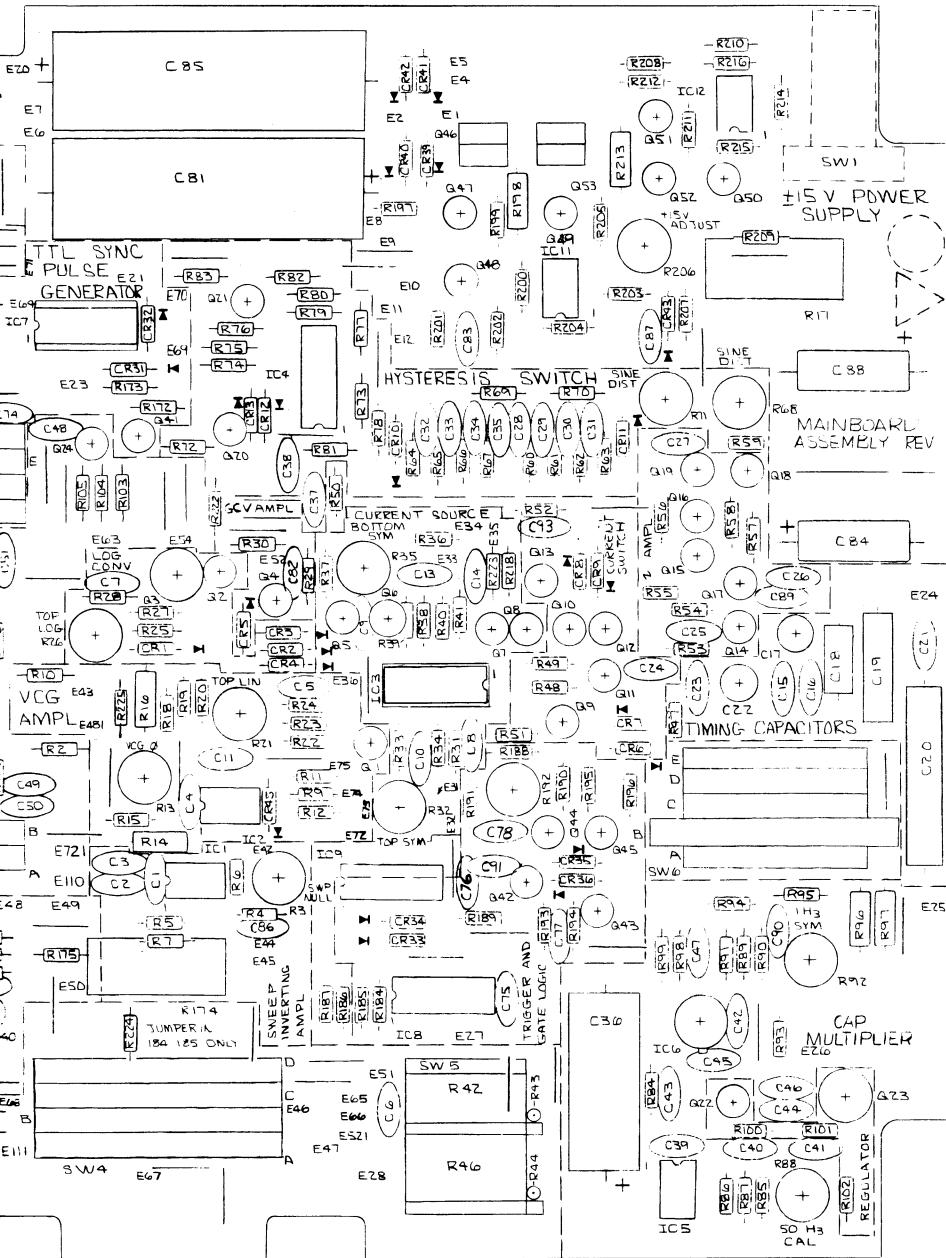
023-CC-124

E721 WAS E72  
 E481 " E48  
 E521 " E52  
 E111 WAS E9  
 E110 ADDED TO  
 HOLE UNDER E721



1. 9 PIN MOLEX TO CRYSTAL BD TO BE WIRED BACKWARDS SO THAT BROWN WIRE IS PIN 9 AND WHITE WIRE IS PIN 1.

REV	ECN	BY	DATE	APP
A	REVISED PER ENG. MARK-UP	BA	8-475	
B	ECN 1521	RO	2-83	



182-116C

DRAWN BA	DATE 7-475	WAVETEK	
PROJ ENGR		TITLE SILKSCREEN ASSEMBLY PRINT (MAIN BOARD)	
RELEASE APPROV		MODEL NO. 183 184 185	DWG NO. 0101-00-026
SCALE 2/1		REV B	23338 SHEET 1 OF 1

THIS DOCUMENT CONTAINS PROPRIETARY INFORMATION AND DESIGN RIGHTS BELONGING TO WAVETEK AND MAY NOT BE REPRODUCED FOR ANY REASON EXCEPT CALIBRATION, OPERATION, AND MAINTENANCE WITHOUT WRITTEN AUTHORIZATION.

D

REFERENCE DESIGNATORS	PART DESCRIPTION	UMIG-MFGN-PART-NO	MFG	WAVETEK NO.	QTY/P1
NONE	ASSY URGD MAIN	0101-00-0126	AVTK	0101-00-0126	1
NONE	SCHEMATIC MAIN	0103-00-0126	AVTK	0103-00-0126	1
NONE	U.C. URGD MAIN	0107-00-0126	AVTK	0107-00-0126	1
NONE	BRKT	155-305	AVTK	1400-00-1875	1
NONE	SPALLEK	144-508	AVTK	1400-00-2123	2
184	SPRING	147-383	AVTK	1400-00-3750	1
NONE	BRKT, HEAT SINK	182-508	AVTK	1400-00-5145	2
185	MOD, FUREK	182-509	AVTK	1400-00-5150	1
NONE	BRKT, PWRH MOD	182-510	AVTK	1400-00-5165	2
C59 C62 C65 C92	CAP, CER, 5PF, 1KV	00-050	LML	1500-00-5011	4
C24 C28 C55 C75 C78	CAP, CER, 10PF, 1KV	00-100	LML	1500-01-0011	5
C51 C52 C62 C75 C95	CAP, CER, 100PF, 1KV	00-101	LML	1500-01-0111	5
C10 C13 C21 C56 C47	CAP, CER, 001MF, 1KV	00-102	LML	1500-01-0211	5
C11 C26 C27 C37 C40	CAP, CER, 01MF, 50V	CK-105	LML	1500-01-0310	30
C41 C44 C46 C48 C49					
C50 C52 C53 C54 C55					
C56 C58 C59 C61 C63					
C66 C72 C77 C82 C83					
C87 C89 C9 C90 C94					
C45 C57 C60 C66 C69	CAP, CER, 1MF, 20V	00-0104	AVTU	1500-01-0415	7
C74 C76					

WAVETEK PARTS LIST

TITLE MAIN

ASSEMBLY NO. 1100-00-0126 PAGE: 1

REV 0

C

REFERENCE DESIGNATORS	PART DESCRIPTION	UMIG-MFGN-PART-NO	MFG	WAVETEK NO.	QTY/P1
C18	CAP, POLY, 01MF, 100V PART OF 1500-00-0008 UTY1011	180-501-101	AVTK		1
C19	CAP, POLY, 01MF, 100V PART OF 1500-00-0008 UTY1011				1
C20	CAP, POLY, 01MF, 100V PART OF 1500-00-0008 UTY1011				1
NONE	MAIN	182-110	AVTK		1
NONE	COUN, 9PIN	09-50-7091	MULEX		21
NONE	SKT, IC, 14PIN	14-01P	CINCH		2
NONE	SKT, IC, 16PIN	16-01P	CINCH		2
NONE	SOLDER LUG	1497	SMITH		2
NONE	PIN	08-50-0105	MULEX		21
NONE	HEAT SINK	NF-207	KANE		2
NONE	TRANSIPAD	10125N	METMS		2
NONE	TRANSIPAD	10160	METMS		2
M156 M52	POT, TRIM, 10K	91AR100	DELTA		2

WAVETEK PARTS LIST

TITLE MAIN

ASSEMBLY NO. 1100-00-0126 PAGE: 5

B

REFERENCE DESIGNATORS	PART DESCRIPTION	UMIG-MFGN-PART-NO	MFG	WAVETEK NO.	QTY/P1
C4 C45	CAP, CER, 15PF, 1KV	00-150	LML	1500-01-5011	2
C25	CAP, CER, 22PF, 1KV	00-220	LML	1500-02-2011	1
C5 C71 C91	CAP, CER, 33PF, 1KV	00-330	LML	1500-03-3011	3
C14 C23 C50	CAP, CER, 4PF, 1KV	00-470	LML	1500-04-7011	3
C29 C54	CAP, CER, 56PF, 1KV	00-560	LML	1500-05-6001	2
C51	CAP, CER, 68PF, 1KV	00-680	LML	1500-06-8001	1
C8	CAP, CER, 80PF, 1KV	00-801	LML	1500-08-0111	1
C55	CAP, MICR, 47PF, 500V	0-15-470J	AKCO	1500-14-7000	1
C15	CAP, MICR, 82PF, 500V	0-15-820J	AKCO	1500-18-2000	1
C10	CAP, MICR, 20PF, 500V	0-15-201F	AKCO	1500-18-2101	1
C67 C70 C80 C64 C88	CAP, ELECT, 100MF, 10V	500010709160L7	SPHAG	1500-31-0101	5
C81 C85	CAP, ELECT, 100MF, 35V	59010800350L6	SPHAG	1500-31-0212	2
C79	CAP, ELECT, 100MF, 15V	59019800150L4	SPHAG	1500-31-9201	1
C36	CAP, ALUM, 2MF, 200V	2MFA205A	AMRAD	1500-42-0504	1
C64	VAR, 1.5-13PF, 250V	75-TH1KU-02 3.5/13PF	THIKO	1500-51-3000	1
C17 C22	VAR, 1-35PF, 250V	75-TH1KU-02 7/35 PF	THIKO	1500-53-5000	2

WAVETEK PARTS LIST

TITLE MAIN

ASSEMBLY NO. 1100-00-0126 PAGE: 2

REV 0

A

REFERENCE DESIGNATORS	PART DESCRIPTION	UMIG-MFGN-PART-NO	MFG	WAVETEK NO.	QTY/P1
M144	POT, CONT, 1K	180-401	AVTK		2
M192 M206 M21 M68 M71	POT, TRIM, 1K	91AK1K	DELTA		2
M174	POT, CONT, 1K	134-M1A	AVTK		2
M159 M17	POT, CONT, 1K	182-401	AVTK		2
M13 M35 M42	POT, TRIM, 1K	91AK100K	DELTA		2
M124	POT, TRIM, 2K	91AK20	DELTA		2
M88	POT, TRIM, 2K	91AK2K	DELTA		2
M58	POT, SWITCH, 2K	142-M1B	AVTK		2
M158 M165	RES, C, 1/2W, 51.10	KC206F-100	STKPL		2
M198 M215	RES, C, 1/2W, 51.10	KC206F-3K9	STKPL		2
M159 M162	RES, C, 1/2W, 51.10	KC206F-8M2	STKPL		2
M97	RES, C, 1/2W, 51.10	KC206F-106	STKPL		2
M16	RES, C, 1/2W, 51.10	KC206F-165	STKPL		2
E7	RES, C, 1/2W, 51.10	KC206F-221	STKPL		2
M14	RES, C, 1/2W, 51.10	KC206F-395	STKPL		2
M176	RES, C, 1W, 1/4, 10K	KC326F-103	STKPL		2
M105 M177 M189 M196	RES, MP, 1/2W, 1/4, 100	MN550-1000F	TKA		2
M219 M220 M48 M49 M50					
M55 M56 M58 M72 M83					

WAVETEK PARTS LIST

TITLE MAIN

ASSEMBLY NO. 1100-00-0126 PAGE: 4

NOTE: UNLESS OTHERWISE SPECIFIED



5

4

3

2

1

REV ECN BY DATE APP

REFERENCE DESIGNATORS	PART DESCRIPTION	UNIG*MFGR*PART-NO	MFGR	WAVETEK NO.	QTY/P1
	CAP,SET,POLYC CONSIST:1509-44-0005 TRMU:0007	180-501-101	WVTK	1509-00-0008	1
C18	CAP,POLYC,1MF,100V PART OF 1509-00-0008 GTY:011				
C19	CAP,POLYC,1MF,100V PART OF 1509-00-0008 GTY:011				
C20	CAP,POLYC,1MF,100V PART OF 1509-00-0008 GTY:011				
Y04E	MAIN	182-110	WVTK	1700-00-0126	1
Y09E	CUNN,WPIN	09-50-709J	MULEX	2100-02-0051	5
Y09E	SKT,IC,16PIN	14-01P	CINCH	2100-03-0011	1
Y09E	SKT,IC,16PIN	16-01P	CINCH	2100-03-0022	1
Y09E	SOLDER LUG	1497	SMITH	2100-04-0012	2
Y09E	PIN	08-50-0105	MULEX	2100-05-0029	27
Y09E	NEAT SINK	NF-207	AAKE	2000-11-0001	4
Y09E	TRANSIPAD	10123N	METMS	2000-11-0003	1
Y09E	TRANSIPAD	10160	METMS	2000-11-0004	4
Y156 H32	POT,TKIM,100	91A1100	BECK	4000-01-0103	2

**WAVETEK PARTS LIST**  
TITLE MAIN  
ASSEMBLY NO. 1100-00-0126  
PAGE: 5  
REV B

REFERENCE DESIGNATORS	PART DESCRIPTION	UNIG*MFGR*PART-NO	MFGR	WAVETEK NO.	QTY/P1
R121 R125 R140 R142 R50 R54 R58 R59 R60 R41 R59 R75	RES,PF,1/8W,1K,1K	KN550-1001F	TKK	4701-03-1001	12
R127 R202 R210 R23 R41	RES,PF,1/8W,1K,10K	KN550-1002F	TKK	4701-03-1002	5
R84	RES,PF,1/8W,1K,100K	KN550-1003F	TKK	4701-03-1003	1
R47 R89 R99	RES,PF,1/8W,1K,10	KN550-1004F	TKK	4701-03-1004	3
98	RES,PF,1/8W,1K,1.1K	KN550-1101F	TKK	4701-03-1101	1
R131 R134	RES,PF,1/8W,1K,1.21K	KN550-1211F	TKK	4701-03-1211	2
R119 R122	RES,PF,1/8W,1K,124	KN550-1240F	TKK	4701-03-1240	4
R108 R117 R62 R65	RES,PF,1/8W,1K,13K	KN550-1302F	TKK	4701-03-1302	4
R155	RES,PF,1/8W,1K,150	KN550-1500F	TKK	4701-03-1500	1
R182 R223 R224 R31 R77 R78 R80	RES,PF,1/8W,1K,1.5K	KN550-1501F	TKK	4701-03-1501	7
R11 R175 R184 R185 R186 R187 R37	RES,PF,1/8W,1K,15K	KN550-1502F	TKK	4701-03-1502	7
R154 R157	RES,PF,1/8W,1K,15	KN550-1504F	TKK	4701-03-1504	2
R179	RES,PF,1/8W,1K,1.70K	KN550-1701F	TKK	4701-03-1701	1
R106 R115	RES,PF,1/8W,1K,19.1K	KN550-1912F	TKK	4701-03-1912	2
R109 R114	RES,PF,1/8W,1K,200	KN550-2000F	TKK	4701-03-2000	2

**WAVETEK PARTS LIST**  
TITLE MAIN  
ASSEMBLY NO. 1100-00-0126  
PAGE: 5  
REV B

REFERENCE DESIGNATORS	PART DESCRIPTION	UNIG*MFGR*PART-NO	MFGR	WAVETEK NO.	QTY/P1
R144	POT,LUNT,1K	180-401	WVTK	4000-01-0207	1
R192 R206 R21 R68 R71	POT,TKIM,1K	91A11N	BECK	4000-01-0209	5
R174	POT,LUNT,10K	134-11A	WVTK	4000-01-0306	1
R159 R17	POT,LUNT,10K	182-401	WVTK	4000-01-0312	2
R15 H35 H42	POT,TRIM,100K	91A1100K	BECK	4000-01-0402	5
R124	POT,TKIM,20	91A120	BECK	4000-02-0000	1
R85	POT,TRIM,2K	91A12K	BECK	4000-02-0201	1
R50	POT,SWITCH,20K	142-11B	WVTK	4002-02-0300	1
R139 R163	RES,C,1/2W,5K,10	KC20GF-100	STKPL	4700-25-0100	2
R148 R213	RES,C,1/2W,5K,3.9	KC20GF-3R9	STKPL	4700-25-0399	2
R139 R162	RES,C,1/2W,5K,4.2	KC20GF-8R2	STKPL	4700-25-0829	2
R47	RES,C,1/2W,5K,10M	KC20GF-106	STKPL	4700-25-1005	1
R16	RES,C,1/2W,5K,1.6M	KC20GF-165	STKPL	4700-25-1604	1
R7	RES,C,1/2W,5K,220	KC20GF-221	STKPL	4700-25-2200	1
R14	RES,C,1/2W,5K,3.9M	KC20GF-395	STKPL	4700-25-3904	1
R170	RES,C,1W,10K,10K	KC32GF-103	STKPL	4700-35-1002	1
R103 R177 R189 R196 R219 R220 R48 R49 R50 R55 R56 R58 R72 R83	RES,PF,1/8W,1K,100	KN550-1000F	TKK	4701-03-1000	14

**WAVETEK PARTS LIST**  
TITLE MAIN  
ASSEMBLY NO. 1100-00-0126  
PAGE: 4  
REV B

REFERENCE DESIGNATORS	PART DESCRIPTION	UNIG*MFGR*PART-NO	MFGR	WAVETEK NO.	QTY/P1
R103 R129 R181 R184 R151 R24 R74 R76 R85	RES,PF,1/8W,1K,2K	KN550-2001F	TKK	4701-03-2001	9
R217	RES,PF,1/8W,1K,21.5	KN550-2105F	TKK	4701-03-2159	1
R133 R147 R153 R160 R52	RES,PF,1/8W,1K,24K	KN550-2400F	TKK	4701-03-2490	5
R100 R135 R136 R200 R204 R211	RES,PF,1/8W,1K,2.49K	KN550-2491F	TKK	4701-03-2491	6
R107 R116 R149 R21	RES,PF,1/8W,1K,24.9K	KN550-2492F	TKK	4701-03-2492	4
R188 R51	RES,PF,1/8W,1K,3.01K	KN550-3011F	TKK	4701-03-3011	2
R120 R53 R57	RES,PF,1/8W,1K,310	KN550-3160F	TKK	4701-03-3160	3
R20	RES,PF,1/8W,1K,3.10K	KN550-3161F	TKK	4701-03-3161	1
R123 R152 R61 R66	RES,PF,1/8W,1K,3.32K	KN550-3321F	TKK	4701-03-3321	4
R130 R132 R40 R67	RES,PF,1/8W,1K,33.2	KN550-3322F	TKK	4701-03-3324	4
R118	RES,PF,1/8W,1K,392	KN550-3920F	TKK	4701-03-3920	1
R137	RES,PF,1/8W,1K,39.2	KN550-3921F	TKK	4701-03-3924	1
R67	RES,PF,1/8W,1K,40.2K	KN550-4022F	TKK	4701-03-4022	1
R102	RES,PF,1/8W,1K,4.32K	KN550-4321F	TKK	4701-03-4321	1
R140 R4	RES,PF,1/8W,1K,4.64K	KN550-4641F	TKK	4701-03-4641	2
R10 R145	RES,PF,1/8W,1K,46.4	KN550-4642F	TKK	4701-03-4644	2

**WAVETEK PARTS LIST**  
TITLE MAIN  
ASSEMBLY NO. 1100-00-0126  
PAGE: 0  
REV B

REMOVE ALL BURRS AND BREAK SHARP EDGES	DRAWN	DATE	<b>WAVETEK</b> SAN DIEGO • CALIFORNIA
MATERIAL	PROJ ENGR	TITLE	
FINISH WAVETEK PROCESS	RELEASE APPROV	MAIN BOARD	
	TOLERANCE UNLESS OTHERWISE SPECIFIED XX .010 ANGLES .1		
	DO NOT SCALE DWG		
SCALE	MODEL NO.	DWG NO.	REV
	183	1100-00-0126	B
CODE IDENT	23338	SHEET 1 OF 2	

5

4

3

2

1



THIS DOCUMENT CONTAINS PROPRIETARY INFORMATION AND DESIGN RIGHTS BELONGING TO WAVETEK AND MAY NOT BE REPRODUCED FOR ANY REASON EXCEPT CALIBRATION, OPERATION AND MAINTENANCE WITHOUT WRITTEN AUTHORIZATION.

D

REFERENCE DESIGNATORS	PART DESCRIPTION	ORIG=MFG=PART-NO	MFG	WAVETEK NO.	QTY/P1
M104 M171 M173 M181 M194 M201 M209 M212 M24 M81	RES,MF,1/8W,1X,499	MN550-4990F	TRK	4701-03-4990	16
M12 M12a M12b M15 M170 M178 M183 M191 M197 M203 M208 M214 M22 M93	RES,MF,1/8W,1X,4,49K	MN550-4991F	TRK	4701-03-4991	14
M36	RES,MF,1/8W,1X,49,99K	MN550-4992F	TRK	4701-03-4992	1
M190 M195	RES,MF,1/8W,1X,51,1	MN550-51M1F	TRK	4701-03-5111	2
M110 M113	RES,MF,1/8W,1X,523	MN550-5230F	TRK	4701-03-5230	2
M104	RES,MF,1/8W,1X,56,2	MN550-56M2F	TRK	4701-03-5622	1
M73 M82	RES,MF,1/8W,1X,576	MN550-5760F	TRK	4701-03-5760	2
M19	RES,MF,1/8W,1X,5,76K	MN550-5761F	TRK	4701-03-5761	1
M207	RES,MF,1/8W,1X,6,19K	MN550-6191F	TRK	4701-03-6191	1
M169 M222	RES,MF,1/8W,1X,6,19K	MN550-6192F	TRK	4701-03-6192	2
M180	RES,MF,1/8W,1X,6,98K	MN550-6981F	TRK	4701-03-6981	1
M218	RES,MF,1/8W,1X,7,50K	MN550-7500F	TRK	4701-03-7500	1
M101 M150 M172 M193 M194 M54	RES,MF,1/8W,1X,7,5K	MN550-7501F	TRK	4701-03-7501	6
M143 M03 M04	RES,MF,1/8W,1X,8,25K	MN550-8250F	TRK	4701-03-8250	3
M205 M74	RES,MF,1/8W,1X,8,25K	MN550-8251F	TRK	4701-03-8251	2

C

<b>WAVETEK PARTS LIST</b>	TITLE MAIN	ASSEMBLY NO. 1100-00-0126	REV B
		PAGE: 7	

REFERENCE DESIGNATORS	PART DESCRIPTION	ORIG=MFG=PART-NO	MFG	WAVETEK NO.	QTY/P1
CR43	RES,MF,SET, MATCHED CONSIST:14799-00-0008 THRU10011				4789-00-0036
CR37 CR38 CR39 CR40 CR41 CR42	DIODE	1N4581	FILCO	4801-01-4581	1
CR6 CR7 CR8 CR9	DIODE	5UE-1	SELEC	4801-02-0001	6
CR10 CR11 CR12 CR13 CR22 CR23 CR24 CR25 CR26 CR27 CR28 CR29 CR30 CR31 CR32 CR33 CR34 CR35 CR36 CR45	DIODE	FD-777	FAIR	4801-02-0777	4
CR14 CR15 CR16 CR17 CR18 CR19 CR20 CR21	DIODE,SET,R-FU=777	FD-8888	FAIR	4801-02-8888	21
U33 U36	TRANS	162-500-98	AVIX	4898-00-0010	1
U34 U37	TRANS	071614807-02-0777			
U5 U7 U8	TRANS	2422194	FAIR	4801-02-2194	2
U23	TRANS	2N2505A	FAIR	4801-02-2505	2
U25	TRANS	2N3565	FAIR	4801-03-3565	5
U26	TRANS	2N3638A	FAIR	4801-03-3638	1
U10 U11 U12 U33 U9	TRANS	2N3642	FAIR	4801-03-3642	5
U22 U47 U48 U49	TRANS	2N3642	FAIR	4801-03-3642	4
U29 U32 U40	TRANS	2N3646	FAIR	4801-03-3646	5

<b>WAVETEK PARTS LIST</b>	TITLE MAIN	ASSEMBLY NO. 1100-00-0126	REV C
		PAGE: 4	

B

REFERENCE DESIGNATORS	PART DESCRIPTION	ORIG=MFG=PART-NO	MFG	WAVETEK NO.	QTY/P1
M86	RES,MF,1/8W,1X,8,87K	MN550-8871F	TRK	4701-03-8871	1
M105	RES,MF,1/8W,1X,909	MN550-9090F	TRK	4701-03-9090	1
M69 M70	RES,MF,1/8W,1X,9,53K	MN550-9531F	TRK	4701-03-9531	2
M53	RES,MF,1/8W,1X,976	MN550-9760F	TRK	4701-03-9760	1
M106 M107	RES,MF,1/4W,1X,124	MN600-1240F	TRK	4701-13-1240	2
M100 M101	RES,MF,1/2W,1X,100	MN650-1000F	TRK	4701-25-1000	2
M215 M216	RES,SET,2=10K,1/8W	102-501-044	AVIX	4789-00-0019	1
	QTY:214701-03-1002				
M90	RES,MF,SET, MATCHED CONSIST:14799-00-0008 THRU10011	104-501-094	AVIX	4789-00-0036	1
M94	RES,MF,1/8W,1X,10K				
	PART OF 4789-00-0036				
	QTY:0114701-03-1002				
M95	RES,MF,1/8W,1X,100K				
	PART OF 4789-00-0036				
	QTY:0114701-03-1003				
M96	RES,MF,1/4W,1X,1K				
	PART OF 4789-00-0036				
	QTY:0114701-13-1004				

A

<b>WAVETEK PARTS LIST</b>	TITLE MAIN	ASSEMBLY NO. 1100-00-0126	REV D
		PAGE: 8	

REFERENCE DESIGNATORS	PART DESCRIPTION	ORIG=MFG=PART-NO	MFG	WAVETEK NO.	QTY/P1
U38 U39 U40 U43	TRANS	2N5903	FAIR	4801-03-4930	4
U50 U51 U52	TRANS	2N4240	FAIR	4801-04-2480	3
U1 U15 U16 U19 U20 U21 U24 U27 U29 U4	TRANS	2N5139	FAIR	4801-03-1390	13
U6	TRANS	2N5462	NSC	4801-03-4820	1
U46	TRANS	11P-24	TI	4802-00-0290	1
U53	TRANS	11P-30	TI	4802-00-0005	1
U13 U18 U25 U26 U30 U31	TRANS,MF,2N5139	104-501-088	AVIX	4898-00-0005	3
	QTY:214901-03-1390				
U14 U17	TRANS,MF,2N5139	102-501-053	AVIX	4898-00-0004	1
	QTY:0114701-03-251				
M98E	SWITCH- ASST	513-00-0020	AVIX	5102-00-0005	1
M97	SWITCH- ASST	513-00-0021	AVIX	5103-00-0021	1
M92	SWITCH	131-442	AVIX	5104-01-0063	1
M94	SWITCH	131-443	AVIX	5104-01-0064	1
M90E	SWITCH	131-125	AVIX	5104-02-0001	1
M90D	SWITCH	133-3A1-1	AVIX	5104-02-0008	1
M91A M91B M91C M90A M90E M90F	SWITCH	102-5A1-1	AVIX	5104-02-0013	6

<b>WAVETEK PARTS LIST</b>	TITLE MAIN	ASSEMBLY NO. 1100-00-0126	REV E
		PAGE: 11	

NOTE: UNLESS OTHERWISE SPECIFIED



PART DESCRIPTION	QWIG=MPGN=PART-NO	MPGN	WAVETEK NO.	QTY/PI
MES, M/SEL, M1CMBU CUBOIST14/99-00-0008 TKMU10011			4789-00-0036	
DIODE	1W8581	MICMBU	4801-01-4581	1
DIODE	SC2-1	SEM1C	4801-02-0001	6
DIODE	FD-777	FA1W	4807-02-0777	4
DIODE	FD-8888	FA1W	4807-02-8888	21
DIODE, SEL, M-FU-777 UTY: 8:4807-02-0777	182-500-78	AV1A	4898-00-0010	1
TRANS	2N219A	FA1W	4901-02-219A	2
TRANS	2N2905A	FA1W	4901-02-2905	2
TRANS	2N3505	FA1W	4901-03-3505	5
TRANS	2N3638A	FA1W	4901-03-3638	1
TRANS	2N3840	FA1W	4901-03-3840	5
TRANS	2N3842	FA1W	4901-03-3842	4
TRANS	2N3846	FA1W	4901-03-3846	5
TITLE MAIN	ASSEMBLY NO. 1100-00-0126 PAGE: 4		REV B	

REFERENCE DESIGNATIONS	PART DESCRIPTION	QWIG=MPGN=PART-NO	MPGN	WAVETEK NO.	QTY/PI
SW3A SW3B SW3C SW3D SW3E SW3F SW3G SW3H SW3C SW4D	WAFER	147-400	AV1K	5104-02-0015	10
SW3 SW6	DEFIN1 MID FRUM: 5104-01-0007	1R2-303	AV1K	5104-99-0022	2
IC2 IC5	IC	LM 301AN	NSC	7000-03-0100	2
IC11 IC12	IC	MA-741	FA1K	7000-07-4100	2
IC4	IC	CA-3054	KCA	7000-50-5400	1
IC5	IC	CA-30964T	KCA	7000-50-9600	1
IC6	IC	CA-5130	KCA	7000-51-3000	1
IC7	IC	7400	TI	8000-74-0000	1
IC8	IC	74LS00	TI	8000-74-0010	1
IC9	IL	74LS74	TI	8000-74-7410	1
IC10	VOLTAGE REGULATION	780533V	FA1W	8000-78-0500	1
TITLE MAIN	ASSEMBLY NO. 1100-00-0126 PAGE: 11		REV B		

PART DESCRIPTION	QWIG=MPGN=PART-NO	MPGN	WAVETEK NO.	QTY/PI
TRANS	2N3503	FA1W	4901-03-3503	4
TRANS	2N4240	FA1W	4901-04-2400	5
TRANS	2N5134	FA1W	4901-05-1340	13
TRANS	2N5402	NSC	4901-05-4020	1
TRANS	11P-24	TI	4902-00-0240	1
TRANS	11P-30	TI	4902-00-0300	1
TRANS, M/PM, 2N5134 UTY: 2:4901-05-1340	164-501-88	AV1A	4992-00-0005	5
TRANS, M/PM, 2N5485 UTY: 2:4901-05-4850	142-501-53	AV1A	4992-00-0004	1
SWITCH ASSY PB	5103-00-0020	AV1A	5102-00-0005	1
SWITCH ASSY PB	5103-00-0021	AV1A	5103-00-0021	1
DEFEN1	5104-02	AV1A	5104-01-0003	1
DEFEN1	5104-03	AV1A	5104-01-0004	1
WAFER	1-105	CTS	5104-02-0001	1
WAFER	153-SM1-1	AV1A	5104-02-0008	1
WAFER	142-SM1-1	AV1A	5104-02-0013	6
TITLE MAIN	ASSEMBLY NO. 1100-00-0126 PAGE: 10		REV H	

REMOVE ALL BURRS AND BREAK SHARP EDGES	DRAWN	DATE	<b>WAVETEK</b> SAN DIEGO • CALIFORNIA	
MATERIAL	PROJ ENGR		TITLE MAIN BOARD	
FINISH WAVETEK PROCESS	RELEASE APPROV		TOLERANCE UNLESS OTHERWISE SPECIFIED XX . 010 ANGLES . 1 DO NOT SCALE DWG	
	SCALE		MODEL NO. 183	DWG NO. 1100-00-0126
			REV B	
	CODE IDENT	23338	SHEET 2 OF 2	

23338		183-184		0103-00-0123	
SHEET		DWG NO.		REV	
23338		183-184		0103-00-0123	
SHEET		DWG NO.		REV	
WAVETEK SWEPT BOARD SCHEMATIC					
WAVETEK SAN DIEGO • CALIFORNIA					
DATE		PROJ ENGR		TITLE	
9-17-75		M. J. P.		SWEPT BOARD	
DRAWN		RELEASE APPROV		MATERIAL	
BR		M. J. P.		WAVETEK	
REMOVE ALL BURNS AND BREAK SHARP EDGES		FINISH WAVETEK PROCESS		SCALE	
DO NOT SCALE DWG		TOLERANCE UNLESS OTHERWISE SPECIFIED		DO NOT SCALE DWG	
XXX - 90° ANGLES - 1:1		XXX - 90°		XXX - 90°	

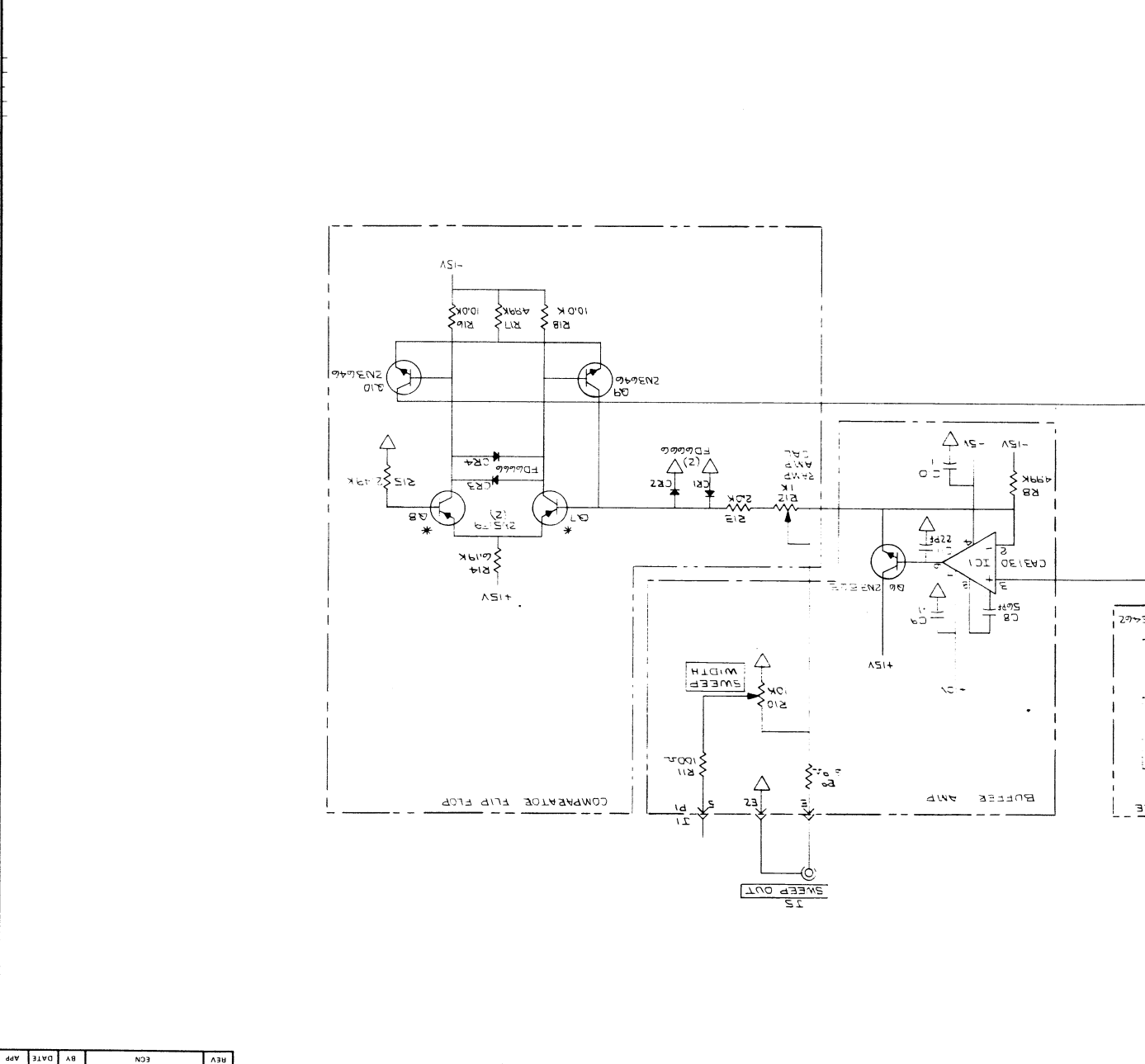
LAST DES USED  
R18  
CR4  
Q10  
IC1  
SW1

0103-00-0123

B

C

D



REV	ECN	BY	DATE	APP

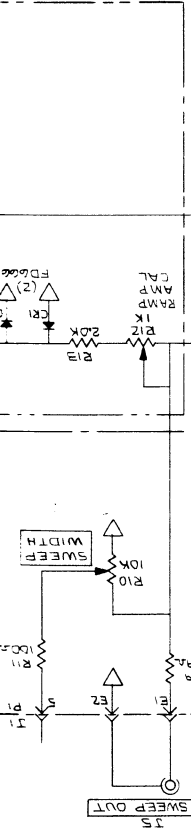
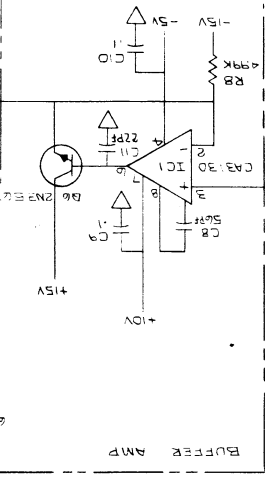
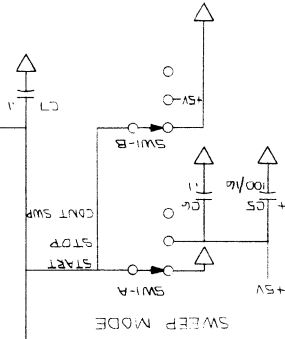
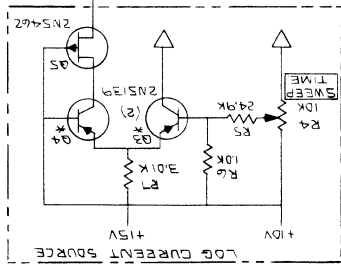
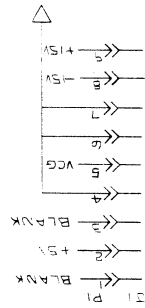
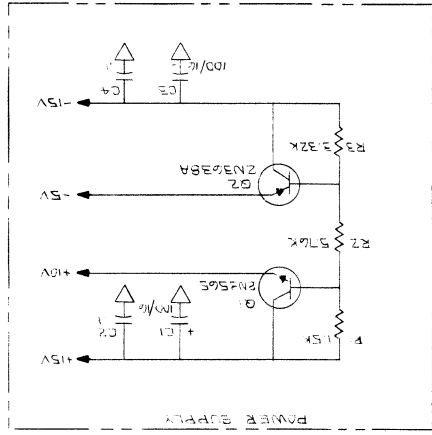
1

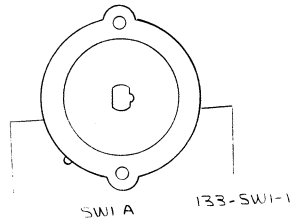
2

3

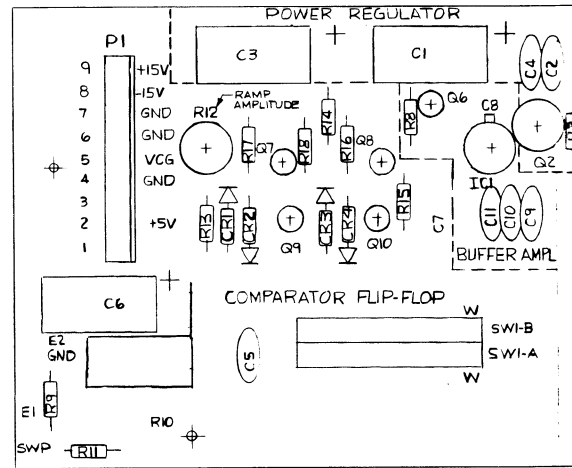
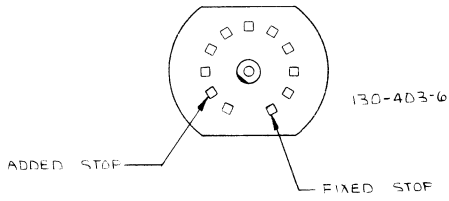
4

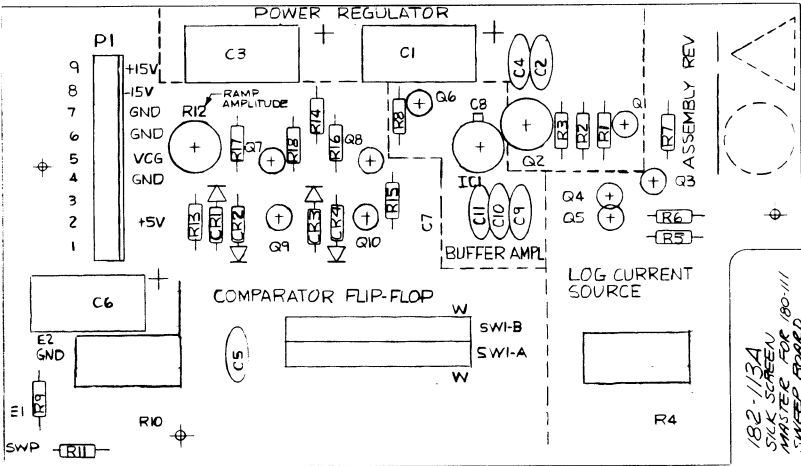
5





DETENT SHOWN FROM FRONT  
IN FULL COUNTER-CLOCKWISE  
POSITION





DRAWN BA	DATE 6/74	WAVETEK SANDIEGO-CALIF.	
ENGR		TITLE SILKSCREEN ASSEMBLY PRINT (SWEEP P.D.)	
RELEASE	APPROV		
TOLERANCE			
SCALE	MODEL NO. 183-184	DWG NO. 0101-00-0123	REV A
	23338	SHEET 1 OF 1	



THIS DOCUMENT CONTAINS PROPRIETARY INFORMATION AND DESIGN RIGHTS BELONGING TO WAVETEK AND MAY NOT BE REPRODUCED FOR ANY REASON EXCEPT CALIBRATION, OPERATION, AND MAINTENANCE WITHOUT WRITTEN AUTHORIZATION.

D

REFERENCE DESIGNATIONS	PART
C11 C2 C4 C5 C4	Cap
L11	Ind
L2	Cap
C1 C3 C6	Cap
C7	Cap
R10E	RES
R10F	RES
R10G	RES
R10H	RES
R10I	RES
R10J	RES
R10K	RES
R10L	RES
R10M	RES
R10N	RES
R10O	RES
R10P	RES
R10Q	RES
R10R	RES
R10S	RES
R10T	RES
R10U	RES
R10V	RES
R10W	RES
R10X	RES
R10Y	RES
R10Z	RES
<b>WAVETEK PARTS LIST</b>	
TITLE SHEET	

C



REFERENCE DESIGNATIONS	PART
R5	RES
R7	RES
R3	RES
R17 R8	RES
R6	RES
R4	RES
R14	RES
LW1 LW2 LW3 LW4	Ind
Z1 Z6	Diode
R2	RES
R10 A9	RES
R5	RES
R3 R4 R7 R8	RES
R10E	RES
R10A R10B	RES
R10C	RES
R10D	RES
R10F	RES
R10G	RES
R10H	RES
R10I	RES
R10J	RES
R10K	RES
R10L	RES
R10M	RES
R10N	RES
R10O	RES
R10P	RES
R10Q	RES
R10R	RES
R10S	RES
R10T	RES
R10U	RES
R10V	RES
R10W	RES
R10X	RES
R10Y	RES
R10Z	RES
<b>WAVETEK PARTS LIST</b>	
TITLE SHEET	

B

A

NOTE: UNLESS OTHERWISE SPECIFIED





REFERENCE DESIGNATIONS	PART DESCRIPTION	QTY/FIG#PART#SU	FIG#	WAVETEK NO.	QTY/PI
C10 C2 C4 C5 C9	CAP, ELEC, 1MF, 20V	0K20=100	APCO	1500-01-1015	5
C11	CAP, ELEC, 22PF, 16V	00=220	CML	1500-02-2011	1
C6	CAP, ELEC, 50PF, 16V	00=500	CML	1500-05-0051	1
C1 C3 C6	CAP, ELECT, 100PF, 16V	500=10700100L7	SPWAG	1500-51-0101	5
C7	CAP, FULTE, 1MF, 100V	225=10491005	SPWAG	1500-01-0000	1
W09E	SWEEP	100=111	AVIX	1700-00-0123	1
W09E	COIL, WPLN	00=01=1491	TOULR	2100-02-0050	1
W09E	FIN, PALE	011=200	APF	2100-05-0020	2
W09E	STANDOFF	1531=500	USELU	2000-02-0000	5
W09E	TRNS, STPAD	101=50	FLINS	2000-11-0005	1
W10	FOUR, 1K, 1K	91=100	FLCA	0600-01-0000	1
W10 W4	FOUR, 10K, 10K	00=1500	CIS	0600-01-0305	2
W11	RES, 1/2W, 14, 100	00550=10000	TRK	4701-05-1000	1
W6	RES, 1/2W, 14, 1K	00550=10000	TRK	4701-05-1001	1
W10 W10	RES, 1/2W, 14, 10K	00550=10000	TRK	4701-05-1002	2
W1	RES, 1/2W, 14, 1.5K	00550=15000	TRK	4701-05-1501	1
W13	RES, 1/2W, 14, 2K	00550=20000	TRK	4701-05-2001	1
W13	RES, 1/2W, 14, 2.49K	00550=24900	TRK	4701-05-2491	1

WAVETEK PARTS LIST TITLE SWEEP ASSEMBLY NO. 1100-00-0123 REV PAGE: 1

REFERENCE DESIGNATIONS	PART DESCRIPTION	QTY/FIG#PART#SU	FIG#	WAVETEK NO.	QTY/PI
W5	RES, 1/2W, 14, 24.9K	00550=24900	TRK	4701-05-2492	1
W7	RES, 1/2W, 14, 3.01K	00550=30100	TRK	4701-05-3011	1
W3	RES, 1/2W, 14, 3.30K	00550=33000	TRK	4701-05-3301	1
W17 W8	RES, 1/2W, 14, 4.49K	00550=44900	TRK	4701-05-4491	2
W2	RES, 1/2W, 14, 5.10K	00550=51000	TRK	4701-05-5101	1
W4	RES, 1/2W, 14, 6.19K	00550=61900	TRK	4701-05-6190	1
W14	RES, 1/2W, 14, 6.19K	00550=61900	TRK	4701-05-6191	1
W11 W2 W3 W4	SOCKET	FO=8000	FAJW	4007-02-0000	0
W1 W6	TRNS	205000	FAJK	4901-05-5050	2
W2	TRNS	205000	FAJK	4901-05-5051	1
W10 W7	TRNS	205000	FAJW	4901-05-0000	2
W5	TRNS	205000	MSC	4901-05-0020	1
W3 W4 W7 W8	TRNS, 2/2W, 2K515K, 1/2W, 100V, 0.5W, 150V	100=501=00	AVIX	4990-00-0005	2
W09E	WELT	130=005	AVIX	5100-01-0004	1
DATA SAID	PAPER	155=001=1	AVIX	5100-02-0000	2
W09E	SWITCH STOP	212=55=000	CIS	5100-07-0000	1
IC1	IC	CA=5150	FLCA	7000-51-5000	1

WAVETEK PARTS LIST TITLE SWEEP ASSEMBLY NO. 1100-00-0123 REV PAGE: 2

REMOVE ALL BURRS AND BREAK SHARP EDGES	DRAWN	DATE	WAVETEK SAN DIEGO • CALIFORNIA
MATERIAL	PROF ENGR		
	RELEASE APPROV		TITLE
			SWEEP BOARD
FINISH WAVETEK PROCESS	TOLERANCE UNLESS OTHERWISE SPECIFIED XXX ± 010 XX ± 030	MODEL NO.	DWG NO.
	DO NOT SCALE DWG	153	1100-00-0123
	SCALE	CODE IDENT	REV
		23338	1 OF 1