
**Operation
Guide**

**WX1000
DAQWORX
Installation & Operation
Guide**

vigilantplant.[®]

Contents

Software License Agreement	4
Checking the Contents of the Package.....	8
CD Handling Guidelines.....	9
Overview of DAQWORX Installation.....	10

Installation Guide

Installing the Software.....	11
Upgrading the Software	16
Modifying, Repairing, or Deleting Software.....	19
Viewing the User's Manual.....	23
List of User's Manuals.....	23
Opening a User's Manual	23
Overview of DAQWORX	25

Operation Guide

Introduction to Functions.....	26
DAQLOGGER.....	26
AddMulti.....	26
GateWT	26
GateCONTROL.....	26
GateMX/MW	26
Flow Chart of Connections and Operation.....	27
Setting Up the Temperature Controller.....	29
Setting Up GateCONTROL.....	30
Setting Up the WT1600.....	33
Setting Up the Ethernet Interface (TCP/IP)	33
Setting the User Name and the Password on WT1600	35
Setting Up GateWT	36
Setting Up the MX100	39
Executing GateMX/MW.....	43
Acquiring Data from the Temperature Controller, WT1600, MX100 or Recorder on DAQLOGGER.....	45
Logging and Saving Data Using AddMulti.....	52
Removing the Firewall.....	58

Appendix

If two or more applications have the same name on the list of your "Apps".....	60
--	----

Product Registration

Thank you for purchasing Yokogawa products.

Yokogawa provides registered users with a variety of information and services. Please allow us to serve you best by completing the product registration form accessible from our Web site.

<http://www.yokogawa.com/ns/reg/>

Software License Agreement

IMPORTANT - PLEASE READ CAREFULLY BEFORE INSTALLING OR USING:

THANK YOU VERY MUCH FOR SELECTING SOFTWARE OF YOKOGAWA ELECTRIC CORPORATION ("YOKOGAWA"). BY INSTALLING OR OTHERWISE USING THE SOFTWARE PRODUCT, YOU AGREE TO BE BOUND BY THE TERMS AND CONDITIONS OF THIS AGREEMENT. IF YOU DO NOT AGREE, DO NOT INSTALL NOR USE THE SOFTWARE PRODUCT AND PROMPTLY RETURN IT TO THE PLACE OF PURCHASE FOR A REFUND, IF APPLICABLE.

Software License Agreement

1. Scope

This Agreement applies to the following software products and associated documentation of Yokogawa (collectively, "Software Product"). Unless otherwise provided by Yokogawa, this Agreement applies to the updates and upgrades of the Software Product which may be provided by Yokogawa.

Software Product: DAQWORX (It is limited to each software that you bought).

2. Grant of License

2.1 Subject to the terms and conditions of this Agreement, Yokogawa hereby grants to you a non-exclusive and non-transferable right to use the Software Product on a single or, the following specified number of, computer(s) and solely for your internal operation use, in consideration of full payment by you to Yokogawa of the license fee separately agreed upon.

Granted number of License: 1 (one)

2.2 Unless otherwise agreed or provided by Yokogawa in writing, the following acts are prohibited:

- a) to reproduce the Software Product, except for one archival copy for backup purpose, which shall be maintained with due care subject to this Agreement;
- b) to sell, lease, distribute, transfer, pledge, sublicense, make available via the network or otherwise convey the Software Product or the license granted herein to any other person or entity;
- c) to use the Software Product on any unauthorized computer via the network;
- d) to cause, permit or attempt to dump, disassemble, decompile, reverse-engineer, or otherwise translate or reproduce the Software Product into source code or other human readable format, or to revise or translate the Software Product into other language and change it to other formats than that in which Yokogawa provided;
- e) to cause, permit or attempt to remove any copy protection used or provided in the Software Product; or
- f) to remove any copyright notice, trademark notice, logo or other proprietary notices or identification shown in the Software Product.

2.3 Any and all technology, algorithms, know-how and process contained in the Software Product are the property or trade secret of Yokogawa or licensors to Yokogawa. Ownership of and all the rights in the Software Product shall be retained by Yokogawa or the licensors and none of the rights will be transferred to you hereunder.

2.4 You agree to maintain the aforementioned property and trade secret of Yokogawa or licensors and key codes in strict confidence, not to disclose it to any party other than your employees, officers, directors or similar staff who have a legitimate need to know to use the Software Product and agreed in writing to abide by the obligations hereunder.

2.5 Upon expiration or termination of this Agreement, the Software Product and its copies, including extracts, shall be returned to Yokogawa and any copies retained in your computer or media shall be deleted irretrievably. If you dispose of media in which the Software Product or its copy is stored, the contents shall be irretrievably deleted.

2.6 The Software Product may contain software which Yokogawa is granted a right to sublicense or distribute by third party suppliers, including affiliates of Yokogawa ("Third Party Software"). If suppliers of the Third Party Software ("Supplier") provide special terms and conditions for the Third Party Software which differ from this Agreement, the special terms and conditions separately provided by Yokogawa shall prevail over this Agreement. Some software may be licensed to you directly by Supplier.

2.7 The Software Product may contain open source software ("OSS"), for which the special terms and conditions separately provided by Yokogawa shall take precedence over this Agreement.

3. Restrictions on Application

3.1 Unless otherwise agreed in writing between you and Yokogawa, the Software Product is not intended, designed, produced or licensed for use in relation to aircraft operation or control, ship navigation or marine equipment control, or ground facility or device for support of the aforesaid operation or control, or for use in relation to rail facility, nuclear related facility, radiation-related equipment, or medical equipment or facility, or under any other circumstances which may require high safety standards.

3.2 If the Software Product is used for the abovementioned purposes, neither Yokogawa nor Supplier assumes liability for any claim or damage arising from the said use and you shall indemnify and hold Yokogawa, Supplier, their affiliates, subcontractors, officers, directors, employees and agents harmless from any liability or damage whatsoever, including any court costs and attorney's fees, arising out of or related to the said use.

4. Limited Warranty

- 4.1 The Software Product shall be provided to you on an "as is" basis at the time of delivery and except for physical damage to the recording medium containing the Software Product, Yokogawa and Supplier shall disclaim all of the warranties whatsoever, express or implied, and all liabilities therefrom. If any physical defect is found on the recording medium not later than twelve (12) months from delivery, Yokogawa shall replace such defective medium free of charge, provided that the defective medium shall be returned to the service office designated by Yokogawa at your expense within the said twelve (12) months. THIS LIMITED WARRANTY PROVIDED IN THIS CLAUSE IS IN LIEU OF ALL OTHER WARRANTIES OF ANY KIND WHATSOEVER AND YOKOGAWA HEREBY DISCLAIMS ALL OTHER WARRANTIES RELATING TO THE SOFTWARE PRODUCT, WHETHER EXPRESSED OR IMPLIED, INCLUDING WITHOUT LIMITATION, ANY IMPLIED WARRANTIES OF MERCHANTABILITY, FITNESS FOR ANY PARTICULAR PURPOSE, NON-INFRINGEMENT, QUALITY, FUNCTIONALITY, APPROPRIATENESS, ACCURACY, RELIABILITY AND RECENCY. IN NO EVENT SHALL YOKOGAWA WARRANT THAT THERE IS NO INCONSISTENCY OR INTERFERENCE BETWEEN THE SOFTWARE PRODUCT AND OTHER SOFTWARE NOR SHALL BE LIABLE THEREFOR. The warranty provisions of the applicable law are expressly excluded to the extent permitted.
- 4.2 At the sole discretion of Yokogawa, Yokogawa may upgrade the Software Product to the new version number ("Upgrade") and make it available to you at your expense or free of charge as Yokogawa deems fit. In no event shall Yokogawa be obliged to upgrade the Software Product or make the Upgrade available to you.
- 4.3 Certain maintenance service may be available for some types of Software Product at Yokogawa's current list price. Scope and terms and conditions of the maintenance service shall be subject to those separately provided by Yokogawa. Unless otherwise provided in Yokogawa catalogues or General Specifications, maintenance services will be available only for the latest version and the immediately preceding version. In no event will service for the immediately preceding version be available for more than 5 years after the latest version has been released. In addition, no service will be provided by Yokogawa for the Software Product which has been discontinued for more than 5 years. Notwithstanding the foregoing, maintenance service may not be available for non-standard Software Product. Further, in no event shall Yokogawa provide any service for the Software Product which has been modified or changed by any person other than Yokogawa.

5. Infringement

- 5.1 If you are warned or receive a claim by a third party that the Software Product in its original form infringes any third party's patent (which is issued at the time of delivery of the Software Product), trade mark, copyright or other intellectual property rights ("Claim"), you shall promptly notify Yokogawa thereof in writing.
- 5.2 If the infringement is attributable to Yokogawa, Yokogawa will defend you from the Claim at Yokogawa's expense and indemnify you from the damages finally granted by the court or otherwise agreed by Yokogawa out of court. The foregoing obligation and indemnity of Yokogawa shall be subject to that i) you promptly notify Yokogawa of the Claim in writing as provided above, ii) you grant to Yokogawa and its designees the full authority to control the defense and settlement of such Claim and iii) you give every and all necessary information and assistance to Yokogawa upon Yokogawa's request.
- 5.3 If Yokogawa believes that a Claim may be made or threatened, Yokogawa may, at its option and its expense, either a) procure for you the right to continue using the Software Product, b) replace the Software Product with other software product to prevent infringement, c) modify the Software Product, in whole or in part, so that it become non-infringing, or d) if Yokogawa believes that a) through c) are not practicable, terminate this Agreement and refund you the paid-up amount of the book value of the Software Product as depreciated.
- 5.4 Notwithstanding the foregoing, Yokogawa shall have no obligation nor liability for, and you shall defend and indemnify Yokogawa and its suppliers from, the Claim, if the infringement is arising from a) modification of the Software Product made by a person other than Yokogawa, b) combination of the Software Product with hardware or software not furnished by Yokogawa, c) design or instruction provided by or on behalf of you, d) not complying with Yokogawa's suggestion, or e) any other causes not attributable to Yokogawa.
- 5.5 This section states the entire liability of Yokogawa and its suppliers and the sole remedy of you with respect to any claim of infringement of a third party's intellectual property rights. Notwithstanding anything to the contrary stated herein, with respect to the claims arising from or related to the Third Party Software or OSS, the special terms and conditions separately provided for such Third Party Software or OSS shall prevail.

6. Limitation of Liability

- 6.1 EXCEPT TO THE EXTENT THAT LIABILITY MAY NOT LAWFULLY BE EXCLUDED IN CONTRACT, YOKOGAWA AND SUPPLIERS SHALL NOT BE LIABLE TO ANY PERSON OR LEGAL ENTITY FOR LOSS OR DAMAGE, WHETHER DIRECT, INDIRECT, SPECIAL, INCIDENTAL, CONSEQUENTIAL OR EXEMPLARY DAMAGES, OR OTHER SIMILAR DAMAGES OF ANY KIND, INCLUDING WITHOUT LIMITATION, DAMAGES FOR LOSS OF BUSINESS PROFITS, BUSINESS INTERRUPTION, LOSS OR DESTRUCTION OF DATA, LOSS OF AVAILABILITY AND THE LIKE, ARISING OUT OF THE USE OR INABILITY TO USE OF THE SOFTWARE PRODUCT, OR ARISING OUT OF ITS GENERATED APPLICATIONS OR DATA, EVEN IF ADVISED OF THE POSSIBILITY OF SUCH DAMAGES, WHETHER BASED IN WARRANTY (EXPRESS OR IMPLIED), CONTRACT, STRICT LIABILITY, TORT (INCLUDING NEGLIGENCE), OR ANY OTHER LEGAL OR EQUITABLE GROUNDS. IN NO EVENT YOKOGAWA AND SUPPLIER'S AGGREGATE LIABILITY FOR ANY CAUSE OF ACTION WHATSOEVER (INCLUDING LIABILITY UNDER CLAUSE 5) SHALL EXCEED THE DEPRECIATED VALUE OF THE LICENSE FEE PAID TO YOKOGAWA FOR THE USE OF THE CONCERNED PART OF THE SOFTWARE PRODUCT. If the Software Product delivered by Yokogawa is altered, modified or combined with other software or is otherwise made different from Yokogawa catalogues, General Specifications, basic specifications, functional specifications or manuals without Yokogawa's prior written consent, Yokogawa shall be exempted from its obligations and liabilities under this Agreement or law.
- 6.2 Any claim against Yokogawa based on any cause of action under or in relation to this Agreement must be given in writing to Yokogawa within three (3) months after the cause of action accrues.

7. Export Control

You agree not to export or provide to any other countries, whether directly or indirectly, the Software Product, in whole or in part, without prior written consent of Yokogawa. If Yokogawa agrees such exportation or provision, you shall comply with the export control and related laws, regulations and orders of Japan, the United States of America, and any other applicable countries and obtain export/import permit and take all necessary procedures under your own responsibility and at your own expense.

8. Audit; Withholding

- 8.1 Yokogawa shall have the right to access and audit your facilities and any of your records, including data stored on computers, in relation to the use of the Software Product as may be reasonably necessary in Yokogawa's opinion to verify that the requirements of this Agreement are being met.
- 8.2 Even after license being granted under this Agreement, should there be any change in circumstances or environment of use which was not foreseen at the time of delivery and, in Yokogawa's reasonable opinion, is not appropriate for using the Software Product, or if Yokogawa otherwise reasonably believes it is too inappropriate for you to continue using the Software Product, Yokogawa may suspend or withhold the license provided hereunder.

9. Assignment

If you transfer or assign the Software Product to a third party, you shall expressly present this Agreement to the assignee to ensure that the assignee comply with this Agreement, transfer all copies and whole part of the Software Product to the assignee and shall delete any and all copy of the Software Product in your possession irretrievably. This Agreement shall inure to the benefit of and shall be binding on the assignees and successors of the parties.

10. Termination

Yokogawa shall have the right to terminate this Agreement with immediate effect upon notice to you, if you breach any of the terms and conditions hereof. Upon termination of this Agreement, you shall promptly cease using the Software Product and, in accordance with sub-clause 2.5, return or irretrievably delete all copies of the Software Product, certifying the same in writing. In this case the license fee paid by you for the Software Product shall not be refunded. Clauses 2.4 and 2.5, 3, 5, 6 and 11 shall survive any termination of this Agreement.

11. Governing Law; Disputes

This Agreement shall be governed by and construed in accordance with the laws of Japan.

Any dispute, controversies, or differences which may arise between the parties hereto, out of, in relation to or in connection with this Agreement ("Dispute") shall be resolved amicably through negotiation between the parties based on mutual trust. Should the parties fail to settle the Dispute within ninety (90) days after the notice is given from either party to the other, the Dispute shall be addressed in the following manner:

- (i) If you are a Japanese individual or entity, the Dispute shall be brought exclusively in the Tokyo District Court (The Main Court) in Japan.
- (ii) If you are not a Japanese individual or entity, the Dispute shall be finally settled by arbitration in Tokyo, Japan in accordance with the Commercial Arbitration Rules of the Japan Commercial Arbitration Association. All proceedings in arbitration shall be conducted in the English language, unless otherwise agreed. The award of arbitration shall be final and binding upon both parties, however, each party may make an application to any court having jurisdiction for judgment to be entered on the award and/or for enforcement of the award.

12. Miscellaneous

- 12.1 This Agreement supersedes all prior oral and written understandings, representations and discussions between the parties concerning the subject matter hereof to the extent such understandings, representations and discussions should be discrepant or inconsistent with this Agreement.
- 12.2 If any part of this Agreement is found void or unenforceable, it shall not affect the validity of the balance of the Agreement, which shall remain valid and enforceable according to its terms and conditions. The parties hereby agree to attempt to substitute for such invalid or unenforceable provision a valid or enforceable provision that achieves to the greatest extent possible the economic, legal and commercial objectives of the invalid or unenforceable provision.
- 12.3 Failure by either party to insist on performance of this Agreement or to exercise a right when entitled does not prevent such party from doing so at a later time, either in relation to that default or any subsequent one.

End of document

Thank you for purchasing DAQWORX. This guide covers the following topics.

- Installing and uninstalling DAQWORX.
- Examples of how to use DAQLOGGER to easily acquire data from Yokogawa Green series temperature controllers, the WT1600, and the MX100.

To ensure correct use, please read this manual thoroughly before beginning operation. After reading the manual, keep it in a convenient location for quick reference in the event a question arises. See the user's manuals for the individual DAQWORX software components for the functions and operating procedures of those products. After reading this manual, keep it in a convenient location for quick reference in the event a question arises.

Note

- The contents of this manual are subject to change without prior notice as a result of improvements in the software's performance and functions. Display contents illustrated in this manual may differ slightly from what actually appears on your screen.
- Every effort has been made in the preparation of this manual to ensure the accuracy of its contents. However, should you have any questions or find any errors, please contact your nearest Yokogawa representative.
- Copying or reproducing all or any part of the contents of this manual without the permission of Yokogawa Electric Corporation is strictly prohibited.
- Use of this product (software and this manual) on more than one computer at the same time is prohibited. Use by more than one user is also prohibited.
- Transfer or lending of this product to any third party is prohibited.
- Yokogawa Electric Corporation provides no guarantees other than for physical deficiencies found on the original disk or this manual upon opening the product package.
- Yokogawa Electric Corporation shall not be held responsible by any party for any losses or damage, direct or indirect, caused by the use of the product.
- A warranty card is included in the package.
- Please read it carefully, and do not lose it as a new one cannot be issued.
- **License numbers will not be reissued. Please keep your license numbers in a safe place.**
- Yokogawa holds the copyright to the software that is on the CD-ROM.

Trademarks

- DAQWORX, DAQLOGGER, and DAQEXPLORER are registered trademarks or trademarks of Yokogawa Electric Corporation.
- Microsoft and Windows are registered trademarks or trademarks of Microsoft Corporation in the United States and/or other countries.
- Adobe and Acrobat are registered trademarks or trademarks of Adobe Systems Incorporated.
- Company and product names that appear in this manual are registered trademarks or trademarks of their respective holders.
- The company and product names used in this manual are not accompanied by the registered trademark or trademark symbols (® and ™).

Revisions

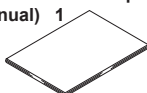
- | | | | |
|---------------|----------------|----------------|--------------|
| • 1st Edition | 2003 July | • 8th Edition | 2008 March |
| • 2nd Edition | 2003 December | • 9th Edition | 2009 January |
| • 3rd Edition | 2004 September | • 10th Edition | 2009 June |
| • 4th Edition | 2005 February | • 11th Edition | 2011 January |
| • 5th Edition | 2006 March | • 12th Edition | 2011 October |
| • 6th Edition | 2006 July | • 13th Edition | 2014 June |
| • 7th Edition | 2007 June | | |

Checking the Contents of the Package

Unpack the box and check the contents before operating the instrument. If some items are missing or otherwise inconsistent with the contents description, please contact your dealer or nearest Yokogawa representative.

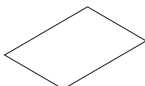
Package Contents

**WX1000 DAQWORX
Installation and Operation Guide (this manual)**
(Not included with the /NCD option or if specifying no
instruction manual) 1



IM WX1000-01

License sheet 1



DAQWORX installation CD
(Not included with the /NCD option) 1



Product number: B9991WD

DAQWORX user's manual CD
(Not included with the /NCD option) 1



Product number: B9991WE

Storing the CDs

Please store your original CDs carefully. Install the products on your hard disk, and run the products from your hard disk during actual use.

CD Handling Guidelines

Make sure to take the following precautions.

CAUTION

- Do not store the product near large amounts of refuse or dust.
 - Do not touch the surface of the CD with no printed characters.
Dirt or sweat from fingertips can damage the CD. Do not write anything on the CD.
 - Pencil lead or residue from erasers can damage the CD.
 - Do not bend or scratch the CD.
Doing so can cause it to become unreadable.
 - Never place anything on top of the CD.
Doing so can cause deformities that can render the CD useless.
 - Do not drop the CD from high locations as doing so can cause damage or deformities.
 - Do not place the CD in direct sunlight or near heat sources.
 - Never allow solvents such as alcohol, benzene, or Freon to come into contact with the CD.
 - Take care when placing the CD into the CD-ROM drive.
 - While the CD is being accessed, do not remove the CD from the CD-ROM drive, cut the power to the PC, or reset the computer.
 - Store the CD in its original jewel case.
Do not leave the CD in the CD-ROM drive after use. It can become deformed or damaged unless it is kept in its case.
-

Overview of DAQWORX Installation

The DAQWORX installer lets you do the following:

- Install the software
- Add or delete software
- Modify or repair a previous software installation
- Install software upgrades

It is recommended that you uninstall any previously installed DAQWORX components before reinstalling. During installation, only the applications that you specify are installed in the DAQWORX folder.

The DAQWORX folder can be installed in any location, but changing the structure of the DAQWORX subdirectories may cause problems when adding, upgrading, or deleting components.

When using Windows Vista and Windows 7, and Windows 8, the software will not function normally if installed in a subfolder of the Program Files folder. Also, when using Windows XP or Windows 2000, please do not upgrade to Windows Vista Windows 7, and Windows 8 if the DAQWORX software is installed in a subfolder of the Program Files folder.

Your license numbers are recorded on the license sheet. Refer the numbers you purchased when adding or changing software. Please keep your license numbers in a safe place.

Note

Following message is shown when installer used in previous installation doesn't support OS language.

“The language between OS and installer is different. If you continue installation, language used in software is not changed. If you want to adapt these language, please uninstall software and install this software again.”

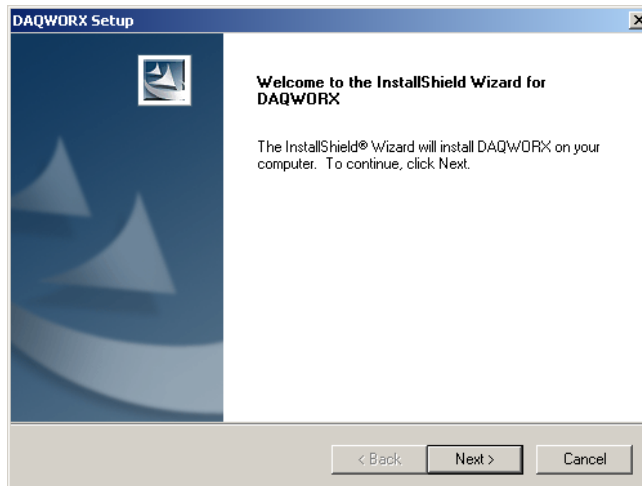
In order to adapt language of software to OS, please uninstall any previously installed DAQWORX components and install again, otherwise language of software is not changed.

Installing the Software

One or more license numbers is required during installation. Please have your license numbers ready before beginning. Your license numbers are recorded on the license sheet.

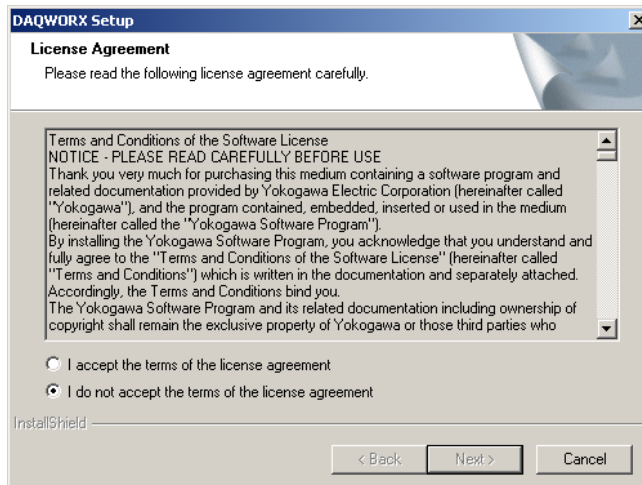
1. Place the DAQWORX installation CD in the CD-ROM drive.

The installer starts. However it will not start if your CD-ROM'S Autoplay function is turned OFF. In that case, double-click the CD-ROM icon under My Computer, then double-click the Setup.exe program.



2. Click Next.

The License Agreement dialog box is displayed.



3. After reading the entire contents of the license agreement, click I accept the terms of the license agreement or I do not accept the terms of the license agreement.

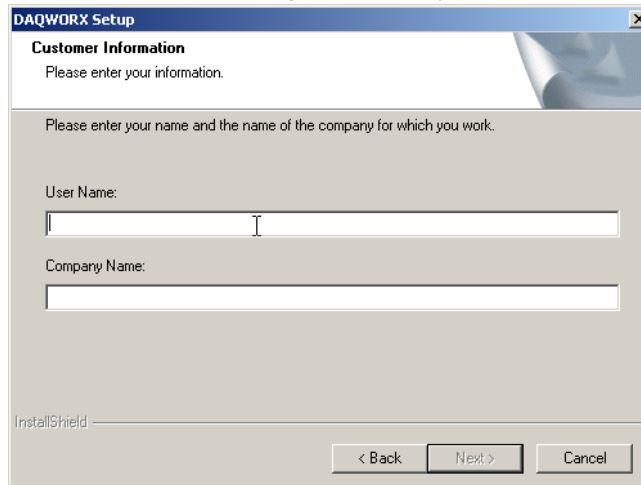
If You Click “I do not accept the terms of the license agreement”

4. Click Cancel to end the installation. You may not install the software.

If You Click “I accept the terms of the license agreement”

4. Click Next.

The user information dialog box is displayed.



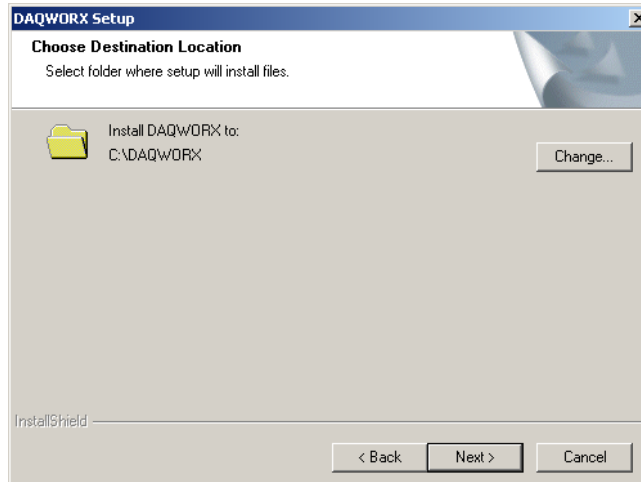
5. Enter the user name and company name.

Note

The user name and company name entered here can be confirmed along with the version information when choosing **Help > About** in any DAQWORX software application.

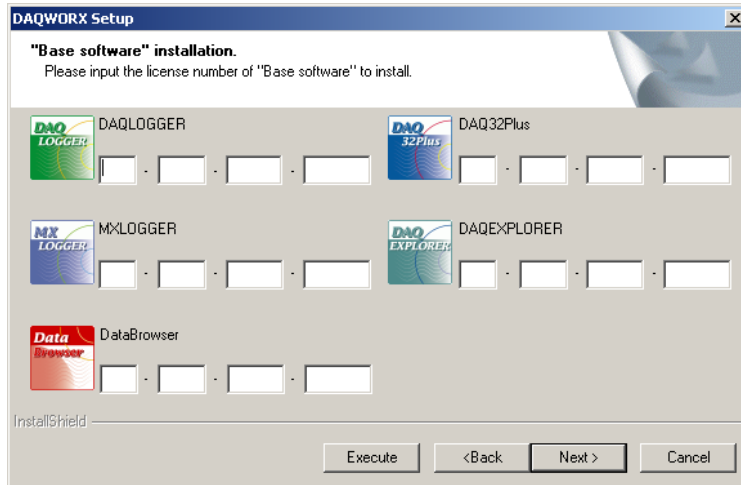
6. Click Next.

The Choose Destination Location window is displayed.



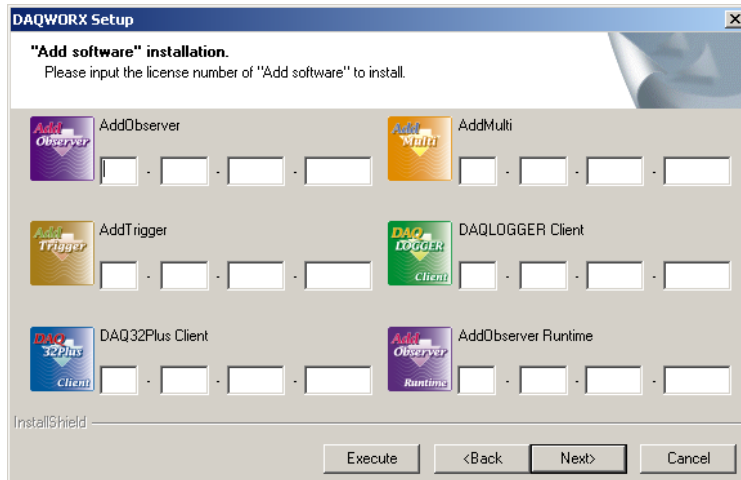
7. Confirm that you accept the default installation destination. To change the installation destination, click Browse and select a new destination using the browser. When using Windows Vista, please do not install the software in a subfolder of the Program Files folder. If installed within the Program Files folder, the software will not function normally.
8. Click Next.

The Base software installation screen is displayed.



9. Enter the license numbers for the applications you wish to install.
10. Click Next.

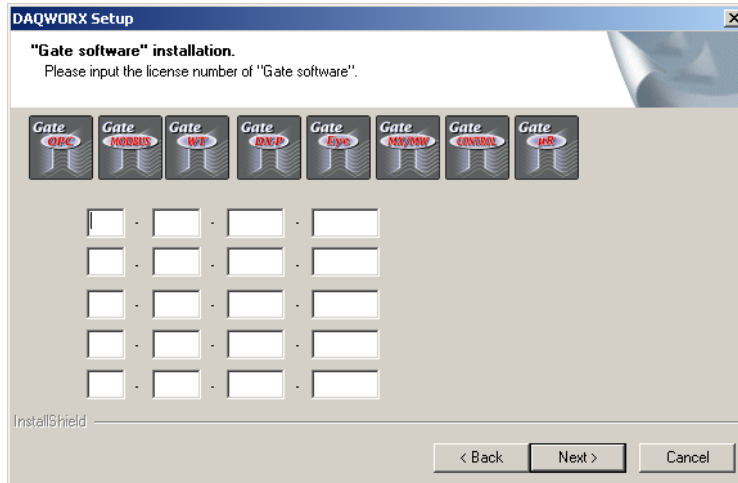
The Add software installation screen is displayed.



11. Enter the license numbers for the applications you wish to install. If you are not installing any Add software, leave the boxes blank and continue on to the next step.

12. Click Next.

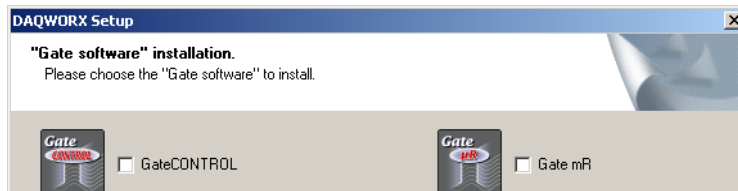
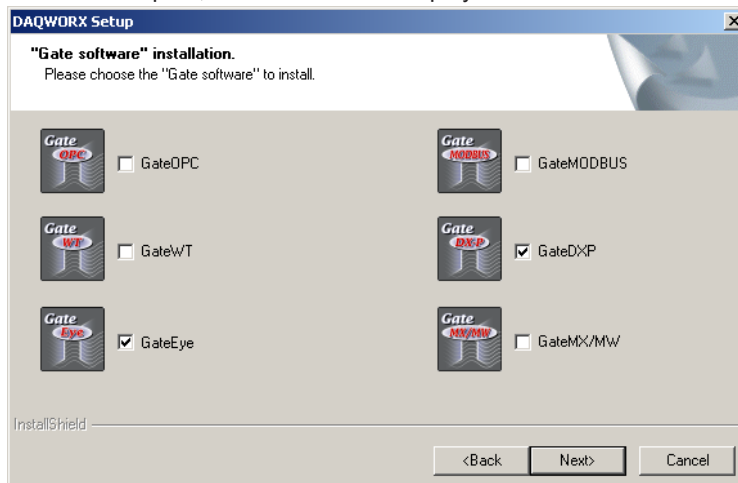
The license number entry screen for Gate software is displayed.



13. Enter license numbers for only the number of applications you wish to use. If you are not installing any Gate software, leave the boxes blank and continue on to the next step.

14. Click Next.

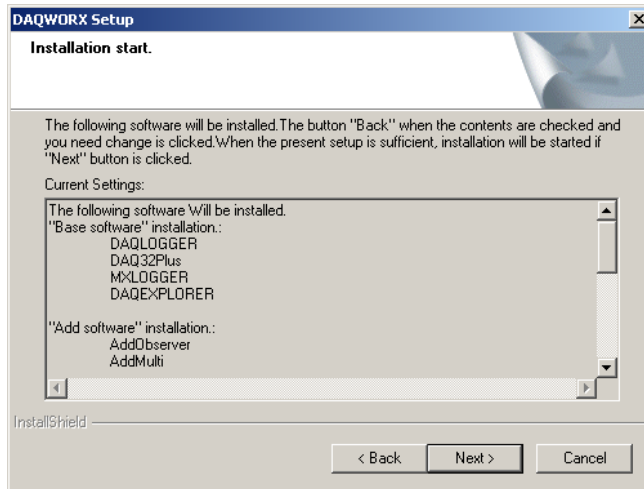
The Gate software selection screen is displayed. If no license numbers were entered in step 13, this screen is not displayed.



15. Select the check boxes of the Gate software applications you wish to install.

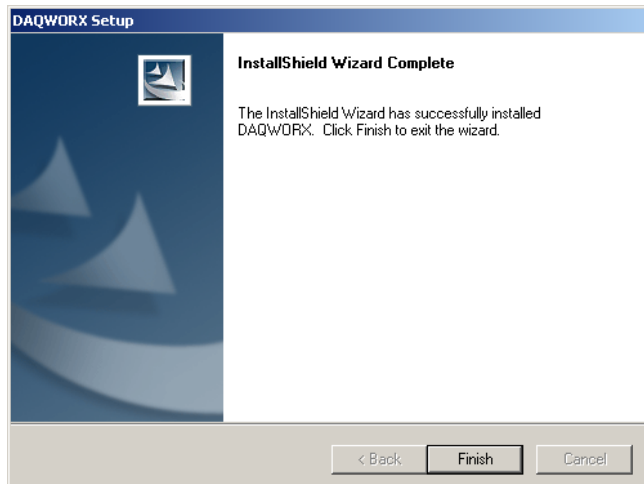
16. Click Next.

The installation confirmation screen appears.

**17.** Click Next.

The installation begins.

When installation is complete, the Finish dialog box appears.

**18.** Click Finish.

The dialog box closes.

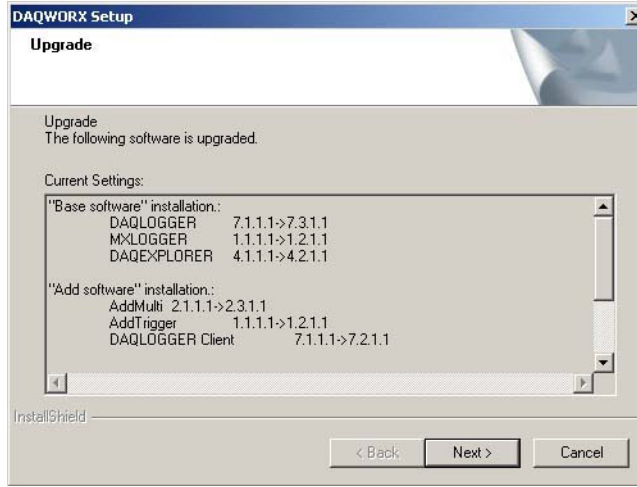
Upgrading the Software

To upgrade the software, you must have a separate license number for the upgrade version as well as the license number for the older version.

1. Carry out steps 1 to 7 in “Installing the Software” (page 11–13).

If an earlier version of DAQWORX is installed, the windows below is displayed.

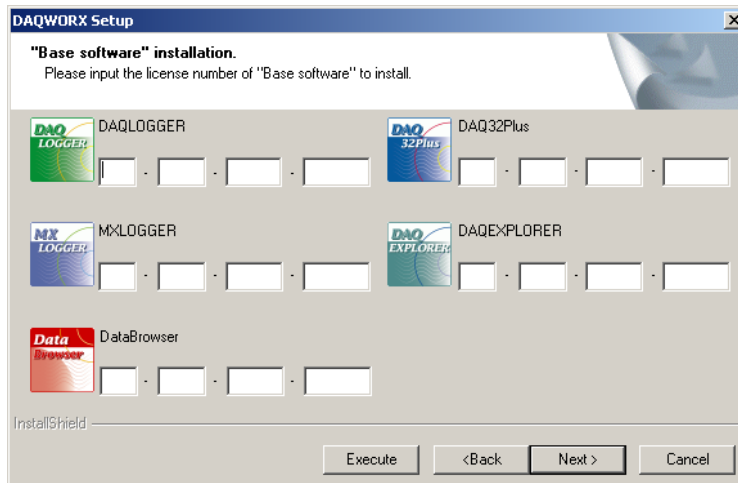
If an earlier version of the software is not installed, continue on to step 3.



2. Click Next.

Any free upgrades that are available will be automatically installed.

3. Enter the upgrade license number.



- Click Next.

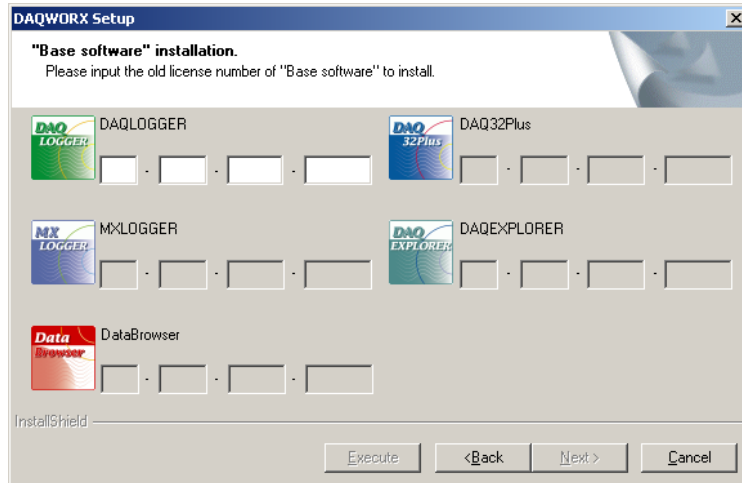
When a License Number for a Previous Version Exists

The license number entry screen for Add software is displayed.

Go to step 5.

When a License Number for a Previous Version Does Not Exist

A screen such as the one below is displayed.

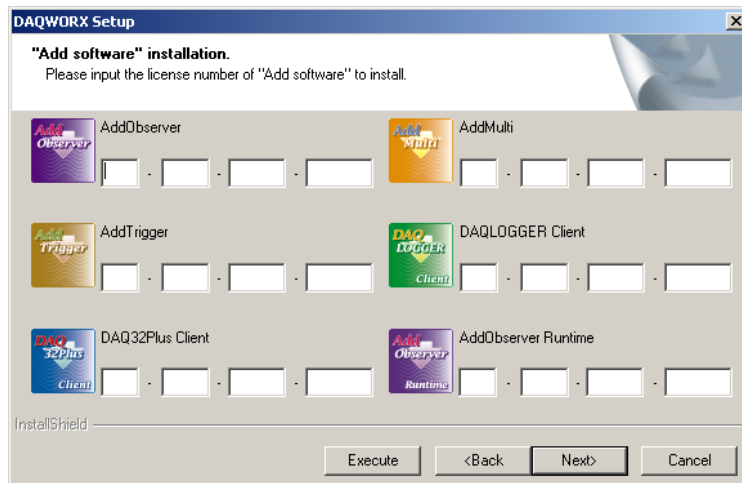


- Enter the old license number.

If the old license number is a 3-numeric block combination, enter the old license number in the box leaving the second block blank.

- Click Next.

The Add software installation screen is displayed.



- Enter the upgrade license number.

8. Click Next.

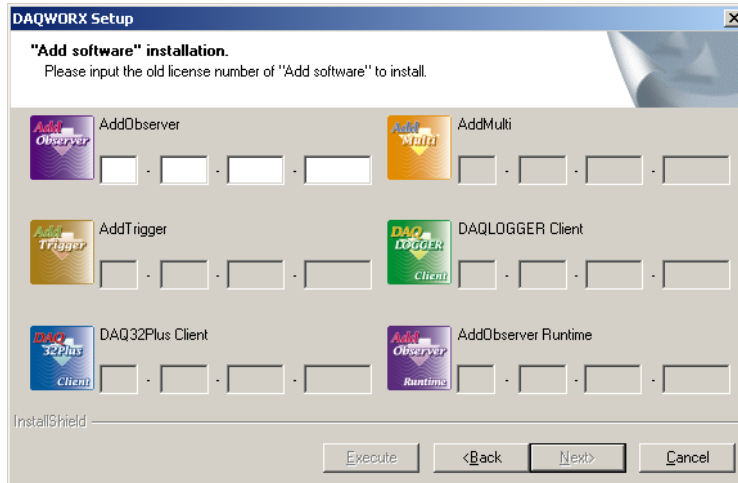
When a License Number for a Previous Version Exists

The installation screen for Gate software is displayed.

Go to step 10.

When a License Number for a Previous Version Does Not Exist

A screen such as the one below is displayed.

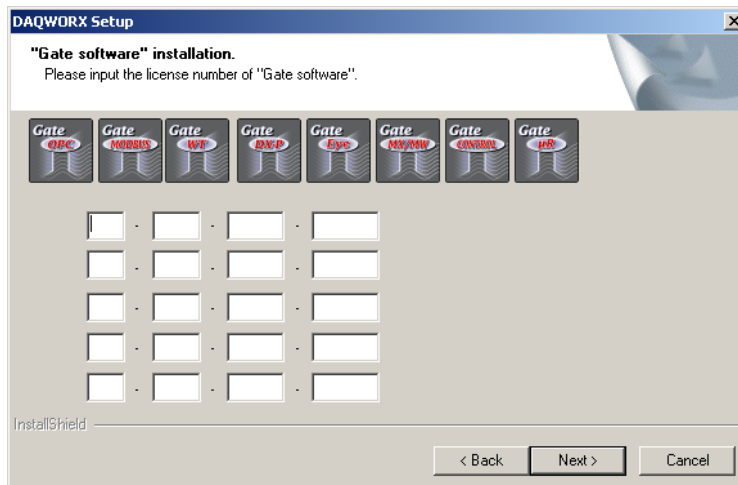


9. Enter the old license number.

If the old license number is a 3-numeric block combination, enter the old license number in the box leaving the second block blank.

10. Click Next.

The installation screen for Gate software is displayed.



11. Perform steps 16 through 18 under "Installing the Software" on pages 15.

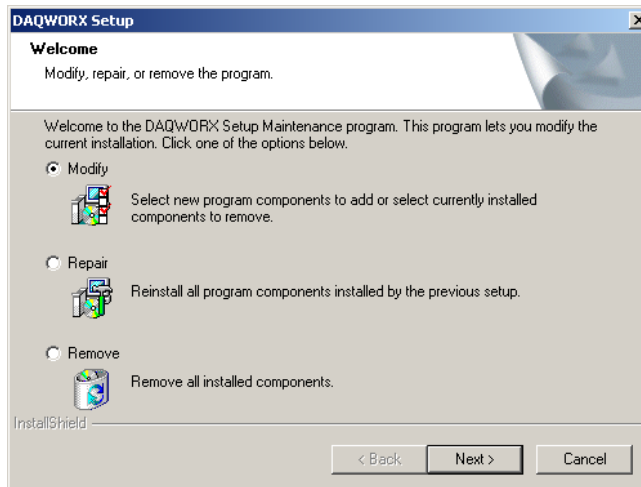
Modifying, Repairing, or Deleting Software

To modify, repair, or delete software, enter maintenance mode by performing the following procedure.

- Rerun the DAQWORX installation CD.
- Select Change or Delete under Add/Remove Programs.

1. The program enters maintenance mode.

The Welcome dialog box opens.



2. Select Modify, Repair, or Delete.

Modify: Select when adding software that was not purchased originally, deleting individual software applications that you no longer need, or performing a free/fee-based upgrade.

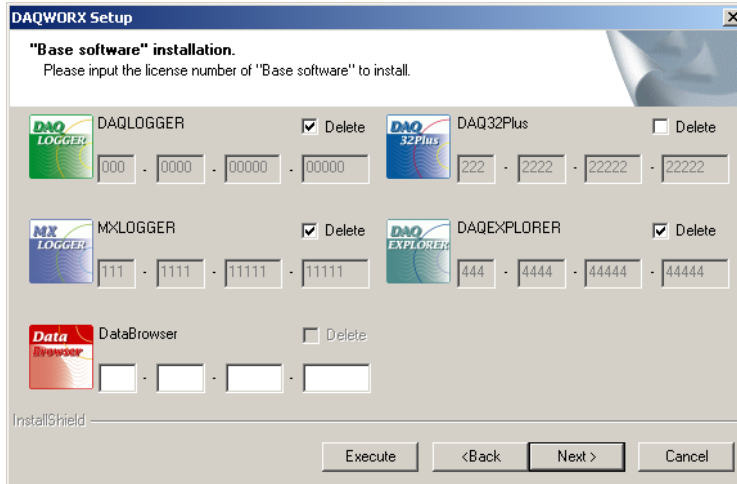
Repair: Select to use a program on the CD to overwrite executable files CD that may have become corrupt or deleted from the hard disk accidentally after installation.

Delete: Select to uninstall DAQWORX.

3. Click Next.
The Base software dialog box opens.

Note

The license numbers of the installed applications are displayed.



4. Enter the license numbers of applications to be added or upgraded, and select the check boxes of any applications that you wish to delete.
Delete: Uninstall applications that have been previously installed.
5. Click Next.

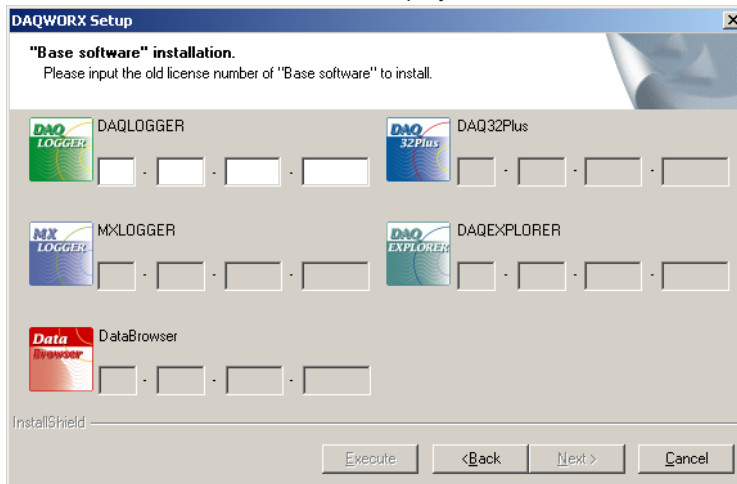
When Entering Upgrade License Numbers

- **When a License Number for a Previous Version Exists**

The license number entry dialog box for Add software is displayed.
Go to step 8.

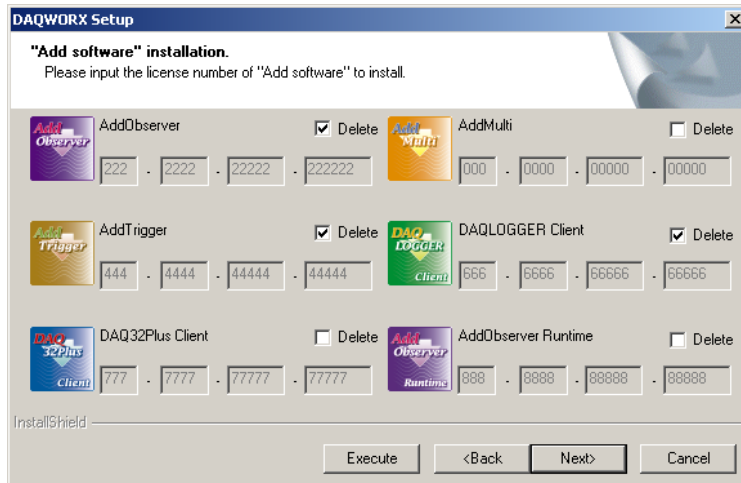
- **When a License Number for a Previous Version Does Not Exist**

A screen such as the one below is displayed.



6. Enter the old license number.
7. Click Next.

The license number entry dialog box for Add software is displayed.



Note

The license numbers of the installed applications are displayed.

8. Enter the license numbers of applications to be added or upgraded, and select the check boxes of any applications that you wish to delete.

When Entering Upgrade License Numbers

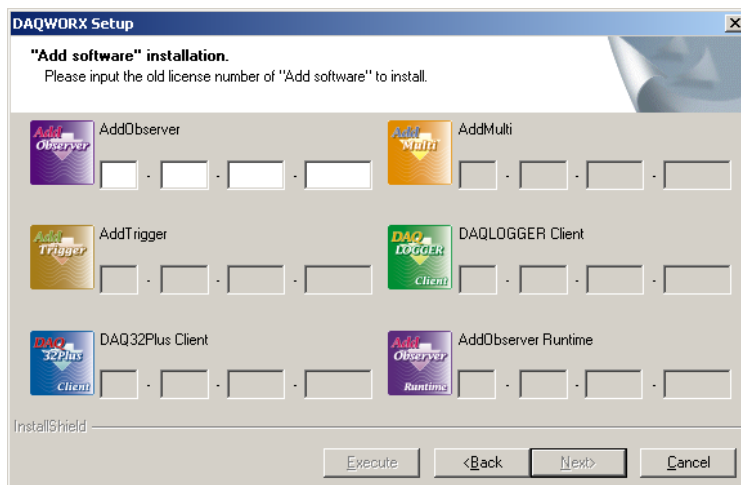
- **When a License Number for a Previous Version Exists**

The license number entry dialog box for Gate software is displayed.

Go to step 11.

When a License Number for a Previous Version Does Not Exist

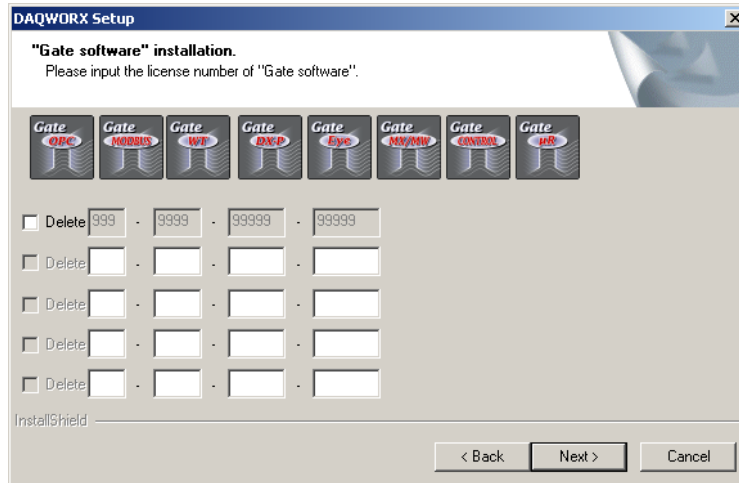
A screen such as the one below is displayed.



9. Enter the old license number.

10. Click Next.

The license number entry dialog box for Gate software is displayed.



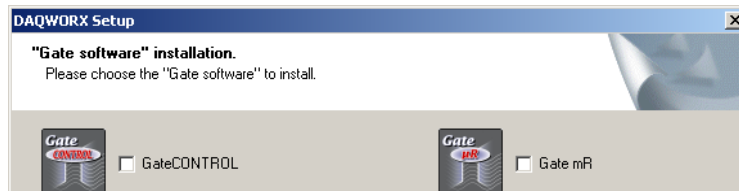
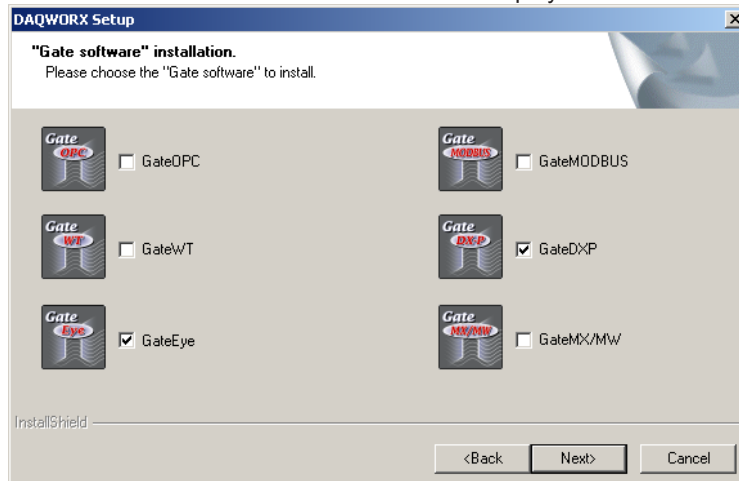
11. If you have new license numbers to add, enter them in the boxes. If you wish to delete licenses, select the appropriate Delete check boxes.

Note

The license numbers of the installed applications are displayed and can be edited.

12. Click Next.

The Gate software addition check boxes are displayed.



13. Select the Gate software applications you wish to add.
14. Perform steps 13 through 18 under "Installing the Software" on page 14 and 15.

Viewing the User's Manual

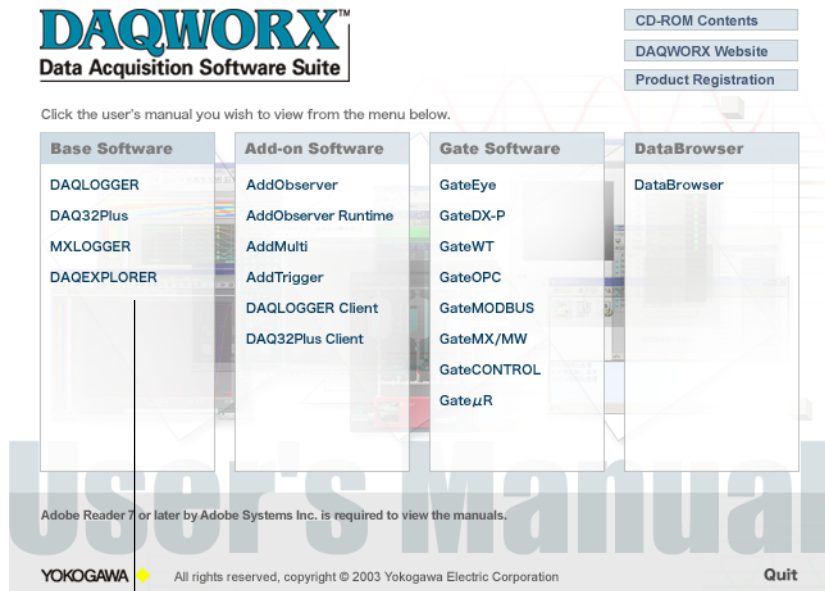
List of User's Manuals

The DAQWORX user's manual CD contains the following manuals in PDF format. Please read the appropriate manuals for the applications you plan to use.

Base Software	Add-on software	Gate Software
DAQLOGGER	AddObserver	GateEye
DAQ32Plus	AddMulti	GateWT
MXLOGGER	AddTrigger	GateDX-P
DAQEXPLORER	DAQLOGGER Client	GateOPC
	DAQ32Plus Client	GateMODBUS
	AddObserver Runtime	GateMX/MW
		GateCONTROL
		Gate μR
DataBrowser (file searching and waveform comparison software)		

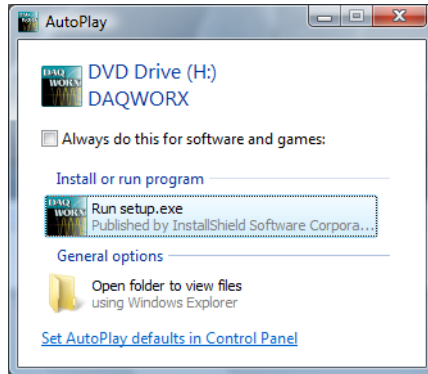
Opening a User's Manual

1. Insert the DAQWORX User's Manual CD into the CD-ROM drive. If using Windows Vista, Windows 7, or Windows 8, the user's manual selection screen opens. However, if the auto-play feature of the CD-ROM drive is turned OFF, the user's manual selection screen will not open automatically. In this case, double-click the CD-ROM icon under My Computer.



If you move the mouse cursor to the product name and click, the user's manual is displayed.

When using Windows Vista, the following screen appears. Click **Run startup.exe**. The user's manual selection screen opens.



2. Double-click the name of the manual you wish to use. The selected user's manual is displayed.

Note

To display a user's manual, Adobe Reader 7.0 or later must be installed on your PC.

3. Click OK.
The dialog box closes.

Overview of DAQWORX

DAQWORX allows users to assemble a data acquisition system using Yokogawa recorders, data loggers, the temperature controllers, measuring instruments without the need for programming. For adding functionality, DAQWORX offers an integrated data acquisition software system, allowing customers to connect high added-value software to their existing data acquisition systems to easily expand the range of supported applications.

DAQWORX consists of three software component groups plus the DataBrowser software program. Users can construct data acquisitions systems that are ideal for their specific application by combining various software packages from the lineup of each of the components.

1. Data Acquisition Component Group: Base Software

The “Base” software components require neither technical expertise nor programming, enabling easy setup of various kinds of data acquisition hardware, a rapid system setup time, and easy settings for analysis of data.

2. High Added-Value Component Group: Add-on Software

“Add” components can be added to Base components to construct a high added-value data acquisition system. Add software includes applications for customized and network-based remote monitoring, data acquisition and saving by group, and monitoring of measured data for triggered data acquisition.

3. Interface Component Group: Gate Software

“Gate” applications let you easily connect not only to data loggers, but also power measuring instruments, industrial instrumentation, data via OPC servers, and images from network cameras—all without programming.

4. DataBrowser Software

DataBrowser performs searches of data files saved by data acquisition units such as DAQSTATION and data acquisition software programs such as DAQLOGGER, DAQEXPLORER, and MXLOGGER, allowing you to display and compare any found waveforms on a single screen.

The next section describes how common components from each group are typically connected.

Introduction to Functions

The following sections provide a brief explanation of how GateMODBUS can be used to acquire data from the UT351 temperature controller on DAQLOGGER, how GateWT can be used to acquire measured data from Yokogawa's WT1600 on DAQLOGGER, how GateMX/MW can be used to acquire measured data from Yokogawa's MX100 Data Acquisition Unit, how measured data from Yokogawa recorders can be acquired on DAQLOGGER, and how AddMulti software can be used to acquire and save data on DAQLOGGER on a group-by-group basis.

DAQLOGGER

DAQLOGGER acquires measured or calculated data from recorders connected to other recorders or PCs. Also, Gate software* (GateWT, GateMODBUS, GateMX/MW etc.) can be connected allowing data acquisition from measuring instruments including digital power meters (such as the WT1600), Modbus devices (such as Yokogawa's UT351/UT551 temperature controllers), and data acquisition units (such as the MX100).

* The devices that can be connected differ depending on the Gate software installed.

AddMulti

AddMulti is a software program that allows you to connect data acquisition software such as DAQLOGGER and simultaneously perform acquisitions under different logging conditions. This function is called multilogging. For example, data acquired from the WT1600 Digital Power Meter, data from a Modbus device (the UT351 temperature controller), and data from recorders can be divided into several groups on DAQLOGGER, then each group can be logged and saved to a designated folder at a specified timing. You can also mix data from the WT1600, Modbus device (UT351), and recorders in a single group.

GateWT

GateWT is a software program that acquires data from WT series instruments and transfers it to DAQLOGGER.

GateCONTROL

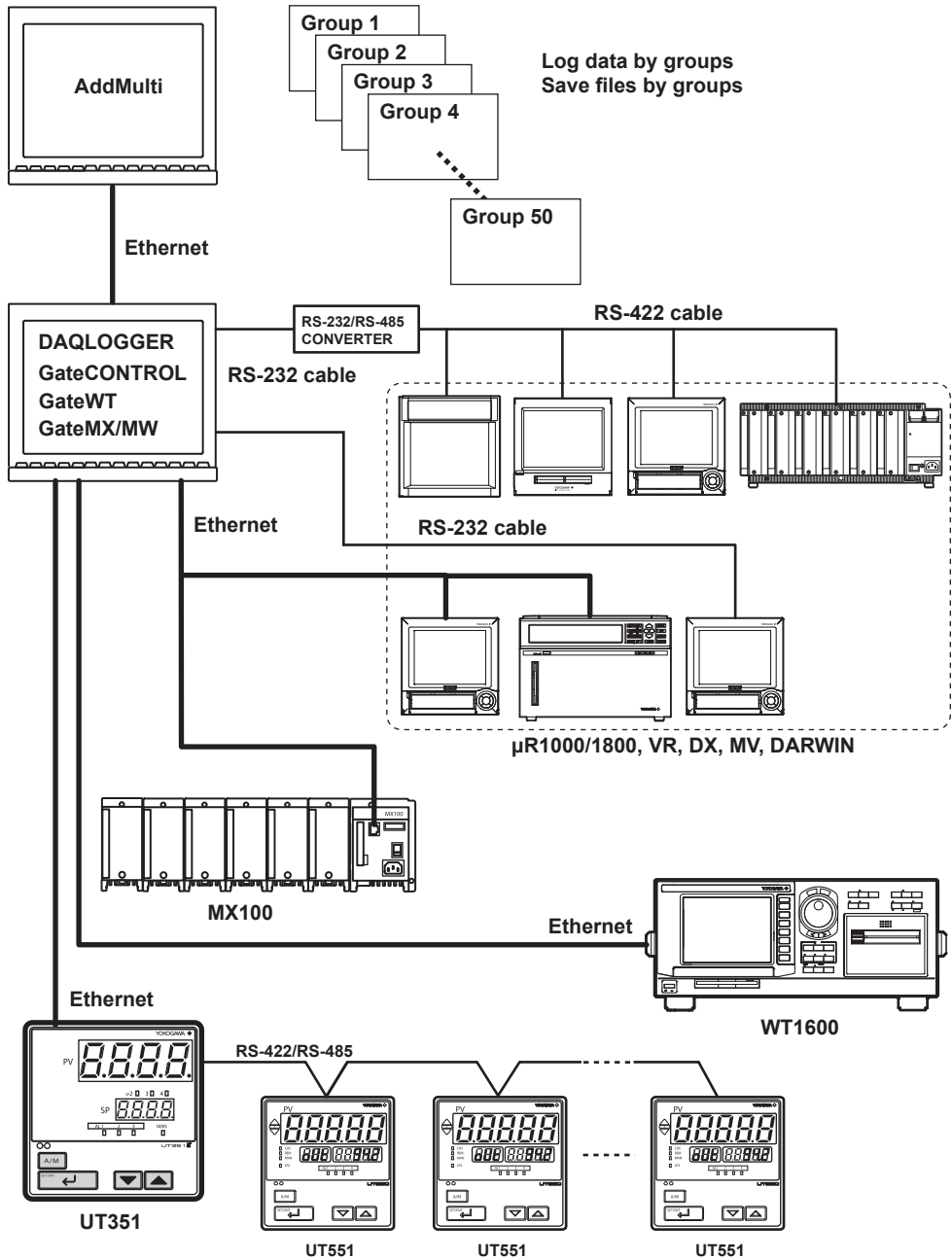
GateCONTROL is a software program that acquires data from temperature controllers and signal converters that support data output via the Modbus/RTU and Modbus/TCP protocols, and transfers the data to DAQLOGGER.

GateMX/MW

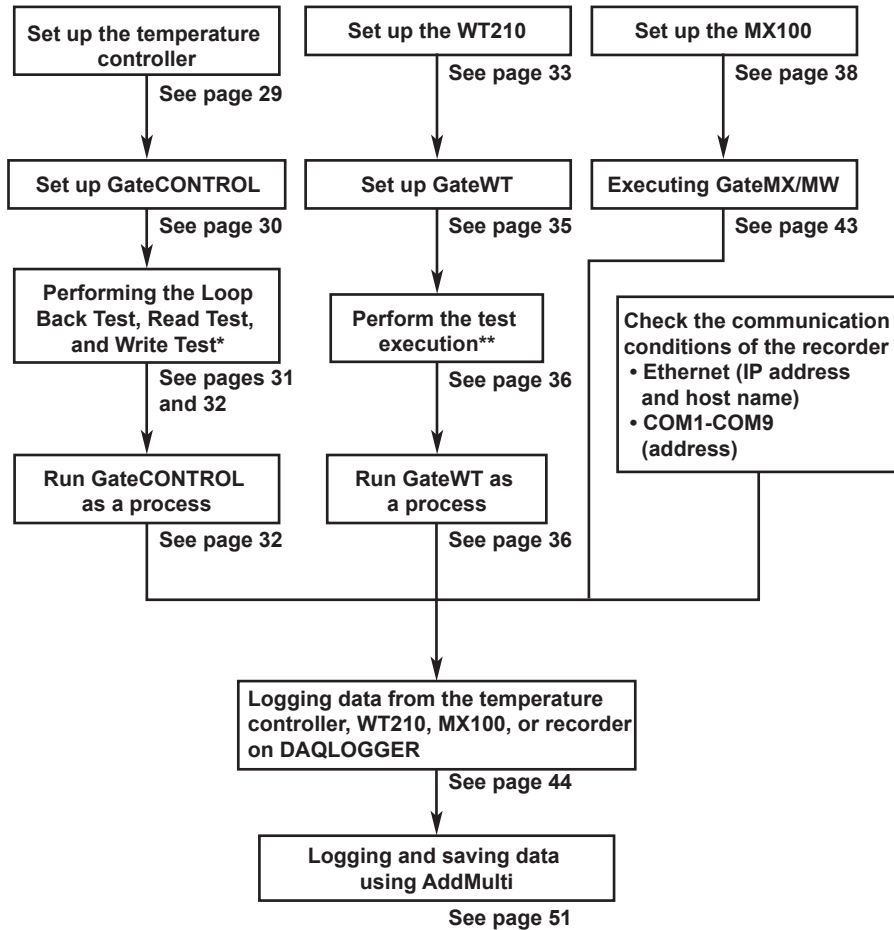
GateMX/MW is a software program that monitors measured data from MX100 data acquisition units and transfers it to DAQLOGGER or remote monitors.

Flow Chart of Connections and Operation

The following is an example configuration for DAQWORX.



The flow of procedures described in this operation guide is shown below. This flow assumes that all connections have been made.



*** GateCONTROL Loop Back Test, Read Test, and Write Test**

GateCONTROL allows you to perform loop back tests on any temperature controllers connected to it.

If the loop back test results in anything other than OK, it may indicate a problem in the wiring of the communication cable, or a mismatched baud rate, parity, or Modbus address.

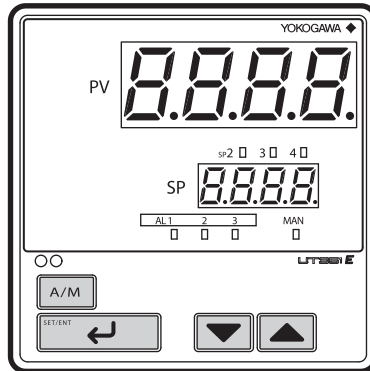
Also, by performing a test acquisition you can determine whether the data set for each tag is correct.

**** GateWT Test Execution**

During GateWT's test acquisition, data is read from WT output channels assigned to each tag and displayed as digital values. This allows you to determine whether the communication settings for each tag are correct.

Setting Up the Temperature Controller

Connect the Yokogawa's UT351 temperature controller.
Enter settings on the UT350E as follows:



1. Hold down **SET/ENT** for three seconds or more to display **oPPA**.
2. Use **▲** or **▼** to display **StUP**.
3. Press **SET/ENT** once to display **PUD**.
4. Press **SET/ENT** once to display **FUnC**.
5. Press **SET/ENT** repeatedly (about twenty times) to display **IP1**.
6. Use **▲** or **▼** to enter the IP address.
7. Press **SET/ENT** to save the settings.
8. Repeat steps 6 and 7 to enter IP addresses 2–4, subnet masks 1–4, and default gateways 1–4.

IP1	IP address 1
IP2	IP address 2
IP3	IP address 3
IP4	IP address 4
Sn1	Subnet mask 1
Sn2	Subnet mask 2
Sn3	Subnet mask 3
Sn4	Subnet mask 4
DG1	Default gateway 1
DG2	Default gateway 2
DG3	Default gateway 3
DG4	Default gateway 4

Setting the IP address, Subnet mask, and Default gateway

	0 to 255	0 to 255	0 to 255	0 to 255
IP address	IP1	IP2	IP3	IP4
Subnet mask	SM1	SM2	SM3	SM4
Default gateway	DG1	DG2	DG3	DG4

9. Press **SET/ENT** to display **ESU** (Ethernet setting switch).
10. Use **▲** or **▼** to enter 1.
After setting **ESU** to 1, it automatically reverts to 0.
11. Hold down **SET/ENT** for three seconds or more for numerical display.

Setting Up GateCONTROL

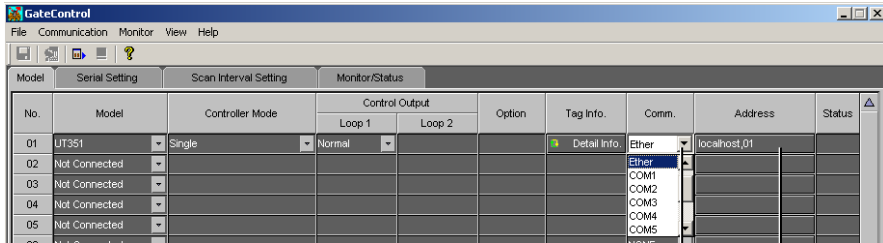
Setting Up GateCONTROL

1. Enter the communication method and address settings as follows:

Communication method : Ether

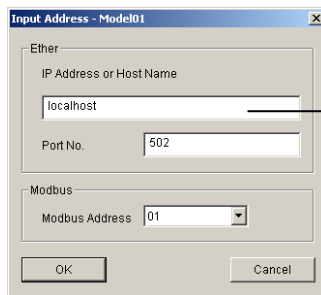
Host name : IP address set on the temperature controller

Modbus address : Unknown



Click and select Ethernet from the menu

Click to display the Input Address dialog box

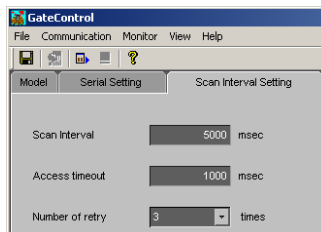


Enter the IP address set on the temperature controller

Click to display the Input Address dialog box

Enter the IP address set on the temperature controller

2. Enter settings in the Acquisition Settings tab. Enter the scan interval from the UT351, the timeout time, and number of retries.



3. Select number 01 in the Model Settings page.

4. Click the automatic model determination button.

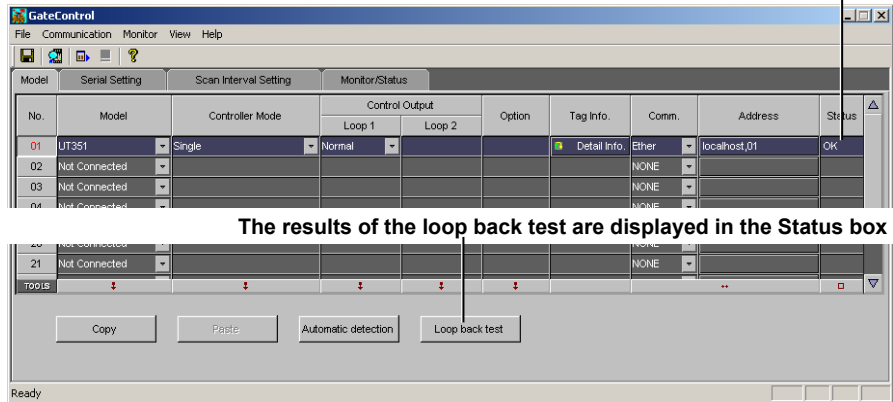
The UT351's control mode, control output, and option functions are displayed.

Performing the Loop Back Test

- Click the Loop Back Test button in the Model Settings page.

The results of the loop back test are displayed in the Status box.

Loop back test result

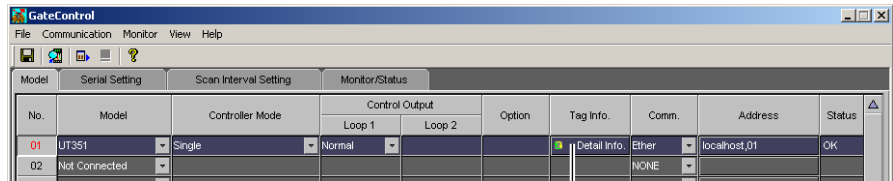


The results of the loop back test are displayed in the Status box

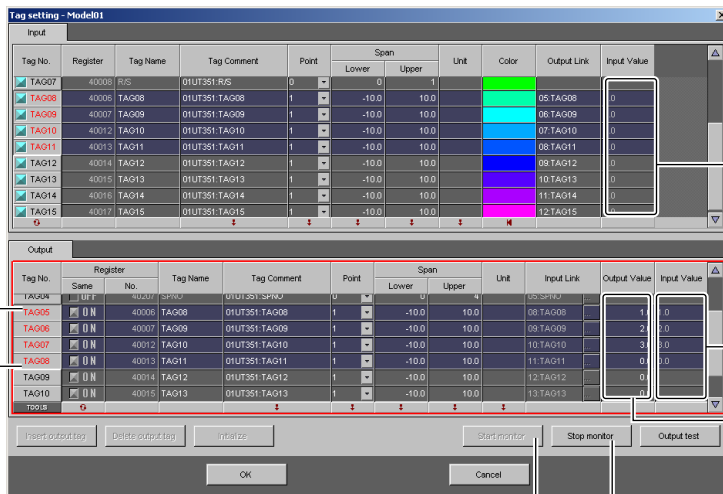
Performing a Read Test

- Click the Detail Settings button in the Model Settings tab page of the model on which you wish to perform the read test.

The Tag Setting dialog box opens.



Click to display the Tag Settings dialog box



Monitor execution results

Output test results

Specifies the output values during the output test

Drag to select the tag on which to perform the output test

Monitor start button

Monitor Stop and Output Test Buttons

- Click the Start monitor button.

The value of each tag from the instrument is loaded, and displayed in the loaded value column of the input tab sheet.

To quit monitor execution, proceed to step 11.

Performing a Write Test

- Specify the Output Values of the tags on which you wish to perform the output test in the output tab page.
- Select the tags on which to perform the output test
- Click the Output Test button during the Read Test.

The output values are written to registers, then the values are acquired from the write registers and the loaded results are displayed in the loaded value column in the output tab page.

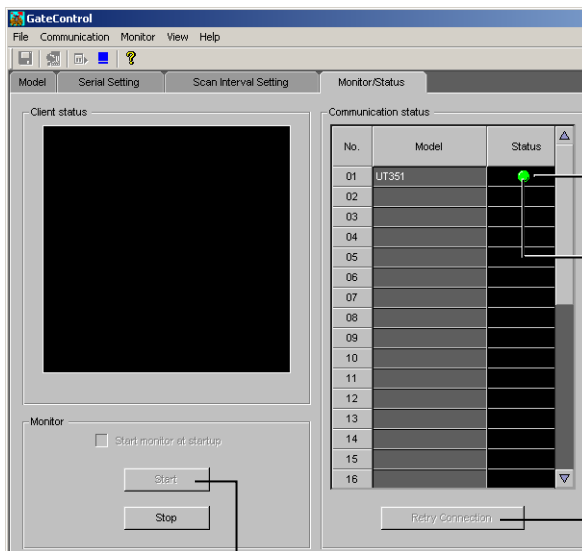
Stopping the Read Test

- Click the Stop monitor button.

The Monitor Test/Read Test is concluded.

Launching GateCONTROL

- Click the Start button in the Acquisition/Status tab.



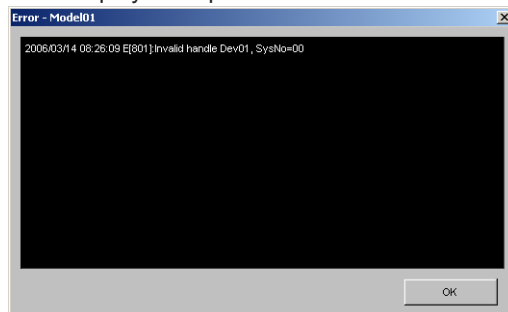
Click to display the Error dialog box

The practice status is displayed using colors
 Green: Normal (comm. open)
 Red: Error (comm. stopped)
 Yellow: Data lost, etc. (comm. open)
 No display: Stopped

Reconnect button
 Click here to reopen communications with the selected instruments

Start button

Error display example



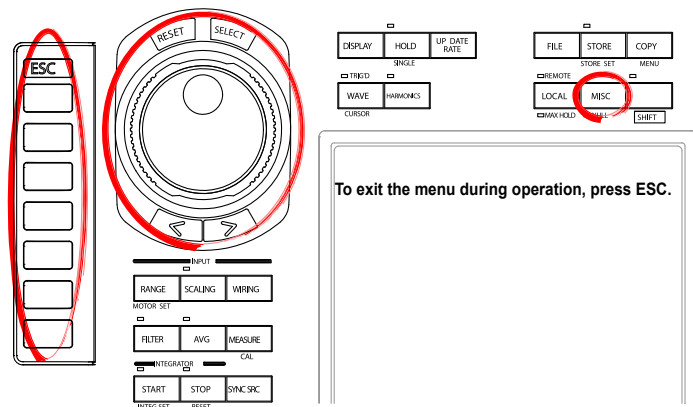
Setting Up the WT1600

Setting Up the Ethernet Interface (TCP/IP)

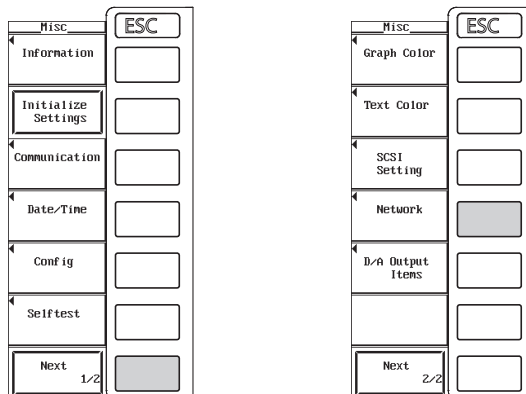
With DHCP, the IP address, subnet mask, default gateway, and DNS are automatically configured.

Note

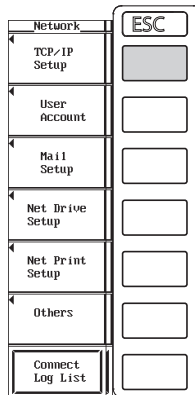
- The IP address, subnet mask, default gateway, and DNS can be automatically specified by using DHCP.
- To use DHCP, the network must have a DHCP server.
- Consult your network administrator to see if DHCP can be used.
- If you use DHCP, a different IP address may be assigned every time the WT1600 is powered up. You must be careful when using the FTP server function of the WT1600.



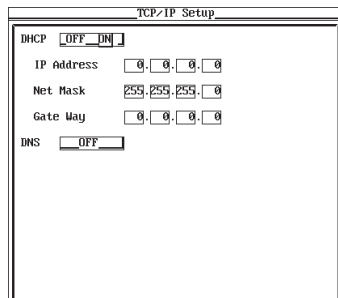
1. Press **MISC** to display the Misc menu.
2. Press the **Next 1/2** soft key to display the **Next 2/2** menu.
3. Press the **Network** soft key to display the **Network** menu.



4. Press the **TCP/IP Setup** soft key to display the TCP/IP Setup dialog box.



5. Turn the **jog shuttle** to select **DHCP**.
6. Press **SELECT** to select ON.
7. Turn the **jog shuttle** to select **DNS**.
8. Press **SELECT** to display the **DNS** selection box.
9. Turn the **jog shuttle** to select **OFF**.



Note

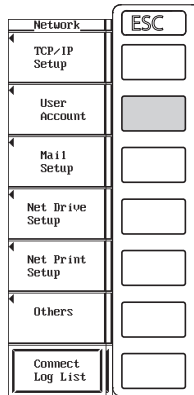
If you changed settings related to the Ethernet network, the WT1600 must be power cycled.

Setting the User Name and the Password on WT1600

Entering the User Name and Password of the WT1600

Set the user name and password of the WT1600 on GateWT also.

1. The procedure is the same as steps 1 through 3 of “*Setting Up the Ethernet Interface (TCP/IP).*”
2. Press the **User Account** soft key to display the **User Account** dialog box.



Setting the User Name

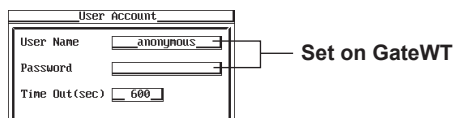
3. Turn the **jog shuttle** to select **User Name**.
4. Press **SELECT** to display the keyboard.
5. Use the keyboard to enter the user name.

When not restricting the access, specify anonymous. If you specify anonymous, you do not have to set the password.

Setting the Password

(If you set user name to anonymous in step 5, you do not have to set the password.)

6. Turn the **jog shuttle** to select Password.
7. Press **SELECT** to display the keyboard.
8. Use the keyboard to enter the password.

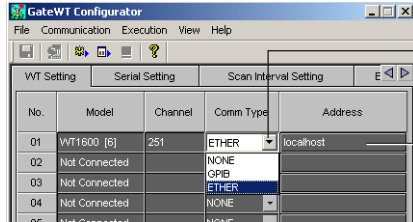


Setting Up GateWT

1. Enter the following settings on the WT Setting tab.

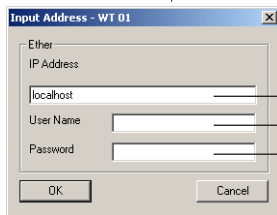
Communication type : ETHER

Address : The IP address, user name, and password set on the WT1600.



Click to display a list, then make a selection

Click to display the Input Address dialog box



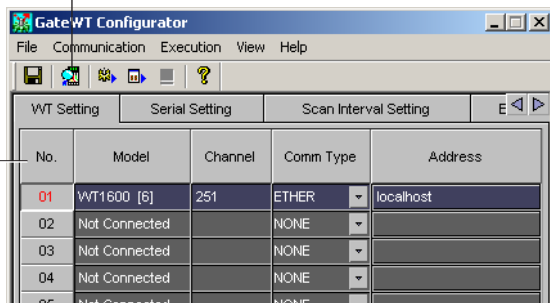
Enter the IP address of the WT1600

Enter the user name for the WT1600

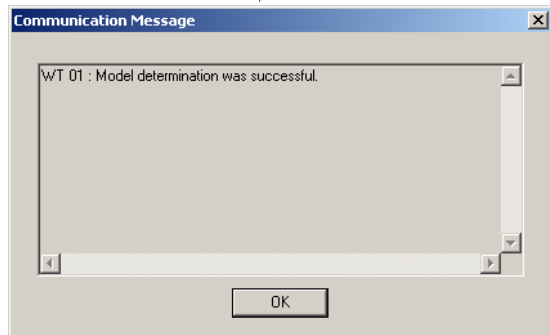
Enter the password for the WT1600

2. Select number 01 (causing the number to turn red) then click the Automatic Model Determination button.

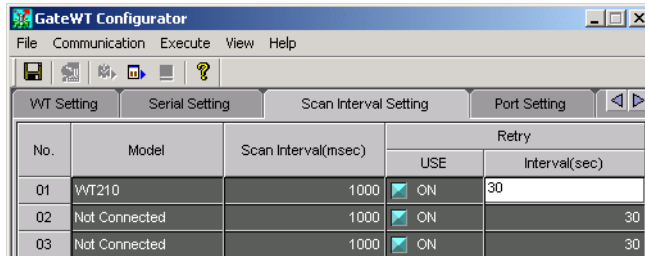
Automatic model determination button



Items selected here appear in red

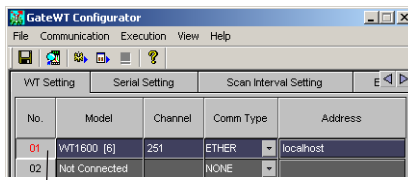


- Enter the following settings on the Scan Interval Setting tab.
 Scan interval : 1000 msec
 Retries : ON
 Retry interval : 30 sec

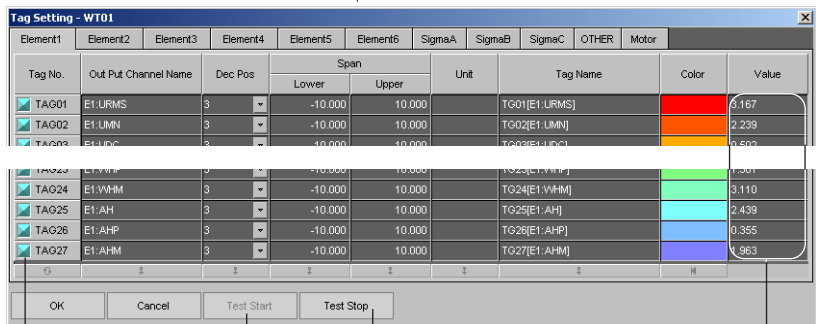


Performing the Test Execution

- Double-click number 01 on the WT Settings tab to display the Tag Setting dialog box.
- Click the Test Execute button. The test result appears in the Value column.



Double-click



Click to start the test execution
 Click to stop the test execution
 Test execution results

Turn ON the tags to execute as a process or service

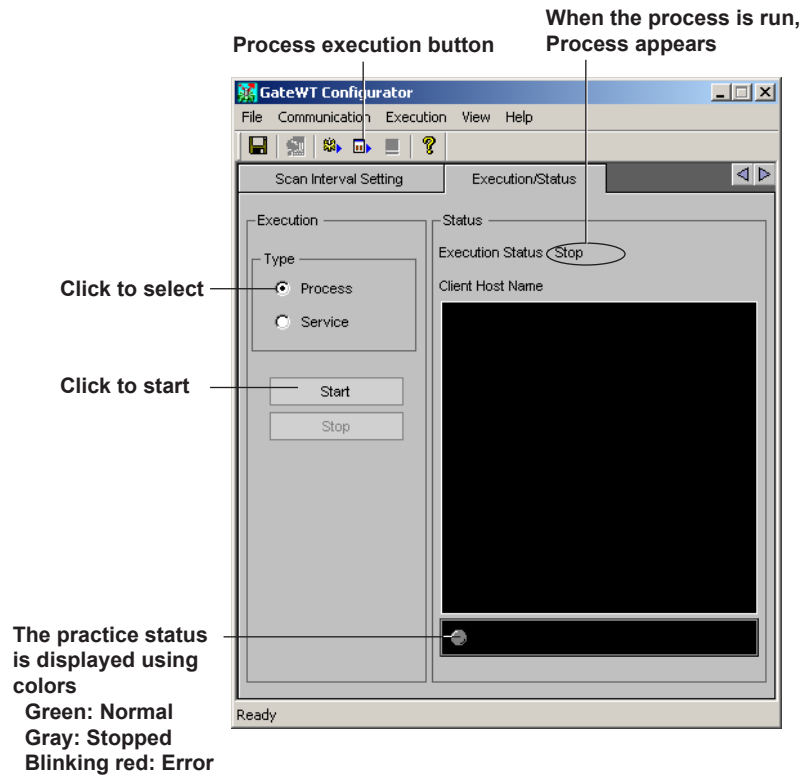
Running as a Process

- After clicking the Test Execute button, click the tag numbers for execution as a process or service to turn them ON (displayed in blue), then click the OK button.

7. Click the Process execution button or perform the following operation in the Execution/Status tab.

Execution Type : select Process

Click the Start button

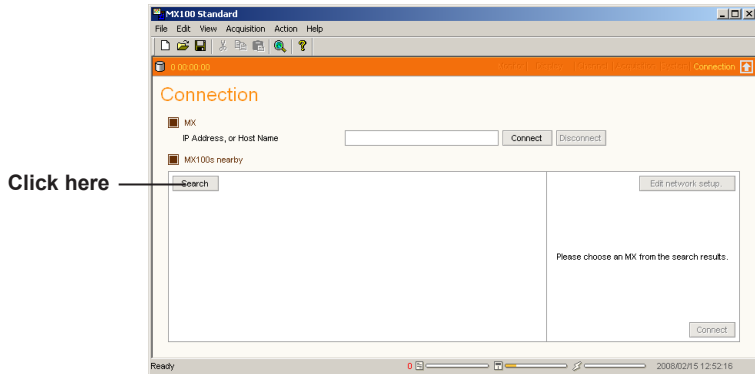


Setting Up the MX100

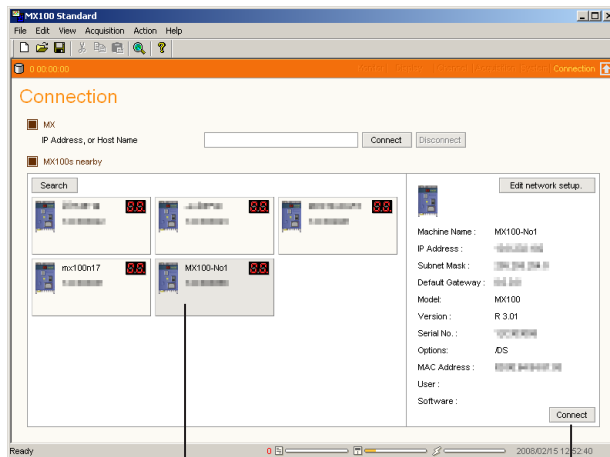
We assume that the CF card is installed in the MX100.

Connecting the MX100 Standard Software and the MX100

1. Click the Search button on the Connection screen of the MX100 Standard Software. An icon indicating the MX100 is displayed.



2. Select the MX100 icon and then click the Connect button in the box containing the Edit Network setup button. The Monitor screen opens.



Select the MX100

After selecting the MX100,
click here

Configuring the System

3. Click System. Then, configure and confirm the system on the System screen.

Unit Setup

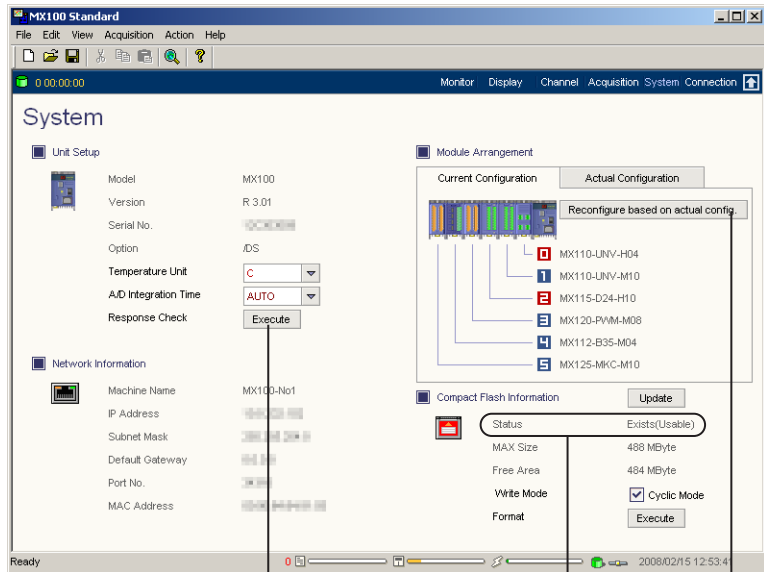
Response check: Click the Check button and confirm that the MX100's 7-segment LED displays --CALL--.

Module Arrangement

Click Receive current configuration on the Actual Configuration tab.

Compact Flash information

Status: Check that it is Exists(Usable)

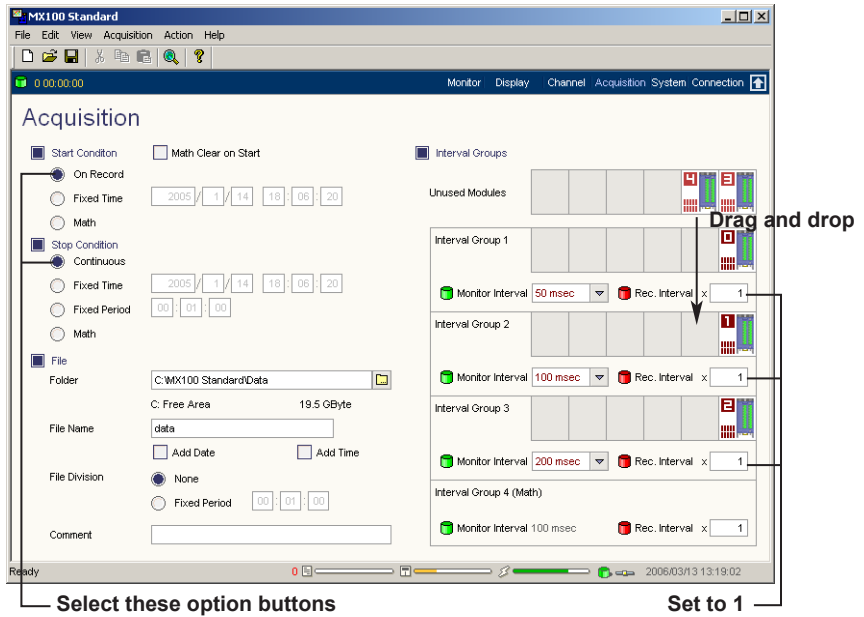


Click here

Check the CF card status
Click here to reconfigure the system

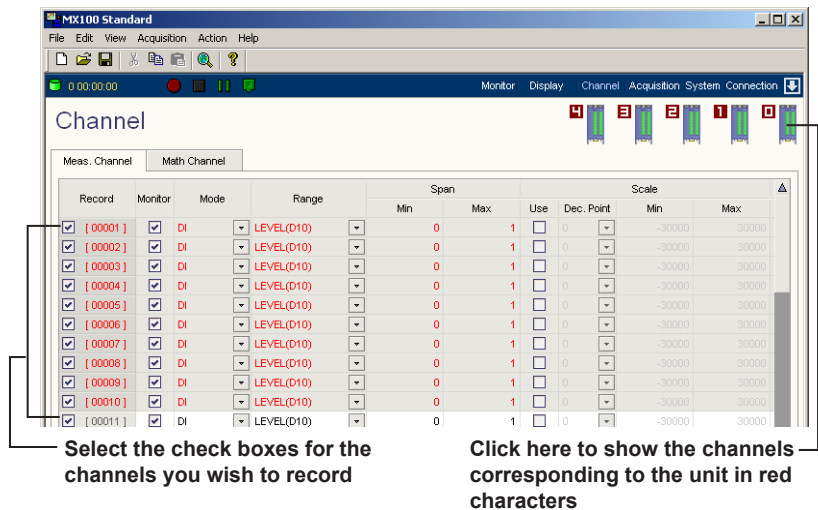
Setting the Acquisition Conditions

- Click Acquisition and enter settings as follows:
 Start Condition: On Record
 Stop Condition: Continuous
 Drag and drop the input module icons to appropriate interval groups.
 Monitor interval of interval groups : 50 msec, 100 msec, and 200 msec
 Record interval of interval groups : 1

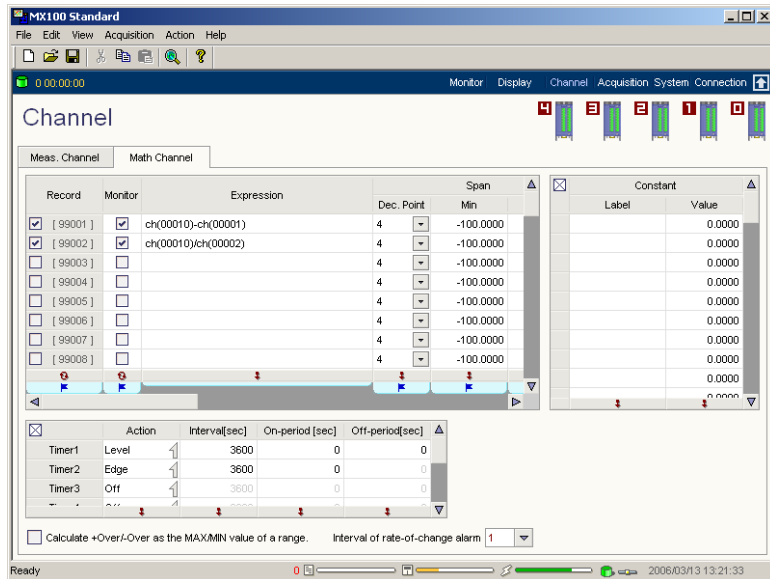


Setting the Channels

- Click Channel. Then, select the check boxes for the channels you wish to record on the Meas. Channel tab.

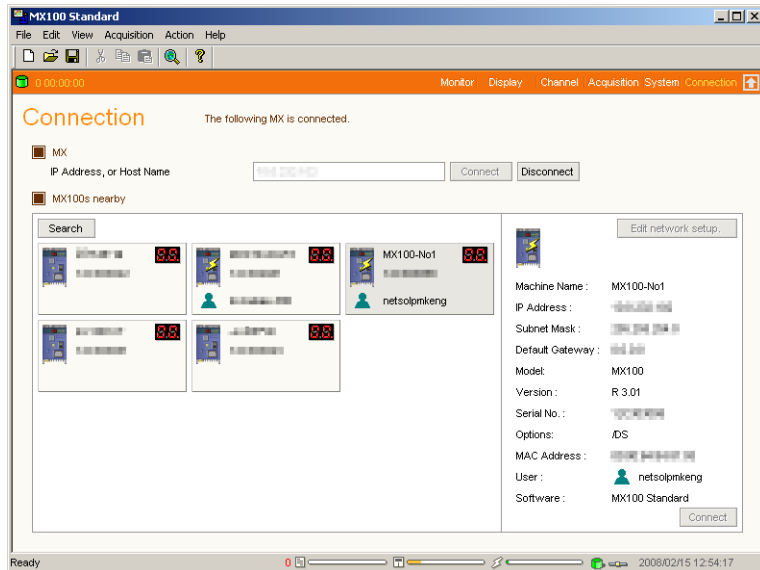


6. For the selected channels, set the mode, range, span, scale, difference input, RRJC, unit, tag number, tag comment, filter, burnout, RJC, alarm, etc.
7. Click the Math Channel tab and set the expression, unit, tag number, tag comment, alarm, timer, etc.



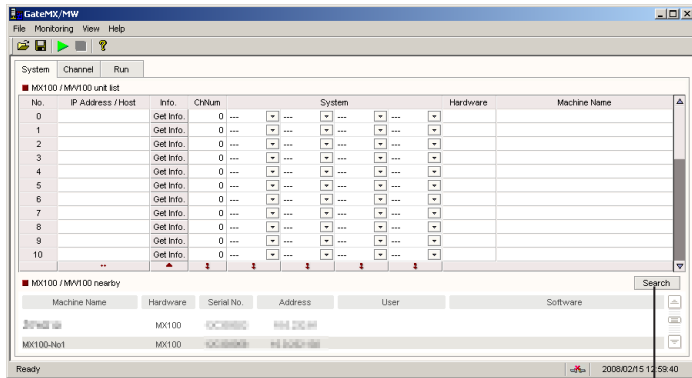
Disconnecting the MX100 Standard Software from the MX100

8. Click Connection. Click the Disconnect button on the Connection screen. The connection will be dropped.



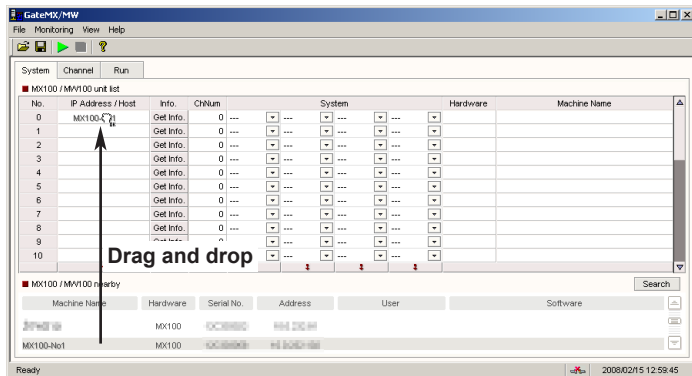
Executing GateMX/MW

1. On the System tab, click the Search button. MX100 information such as the machine name, serial number, and address is displayed under MX100/MW100 nearby.



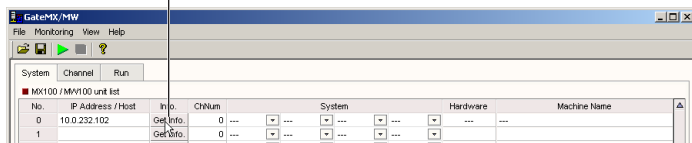
Click here

2. Drag the machine name from MX100 nearby onto the IP Address/Host box of No. 0 under MX100 unit list.

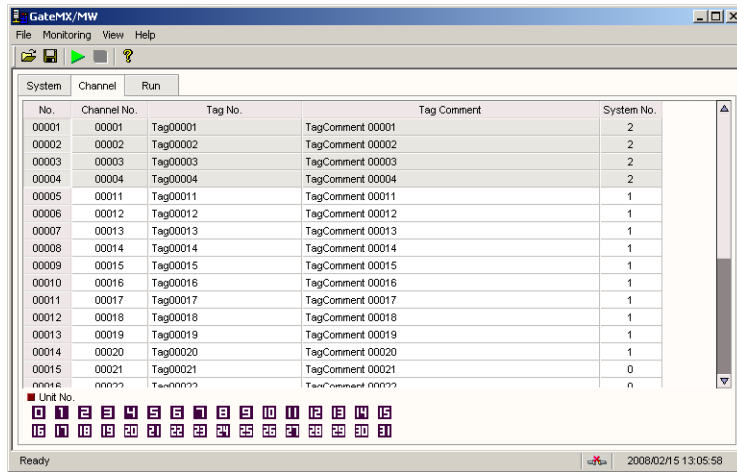


3. Click the Get Info. button. The machine name is displayed.

Click here

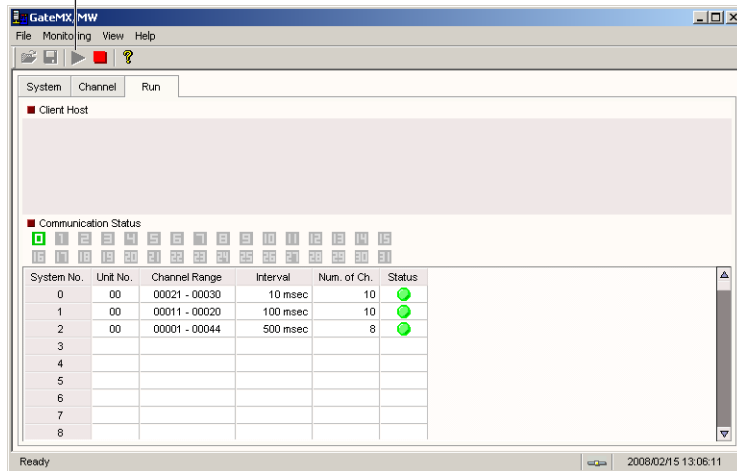


- Click the number under Unit No. on the Channel tab to check the channel settings. The channel information corresponding to the unit number is highlighted.



- Click the Start Monitoring button or choose Start Monitoring from the Monitoring menu. The communication status is displayed on the Run tab.

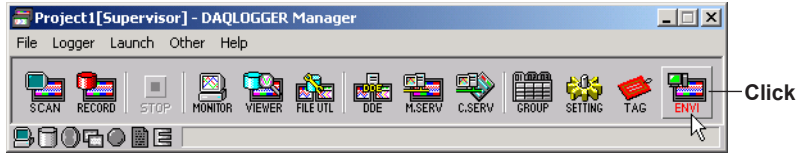
Start monitoring button



Acquiring Data from the Temperature Controller, WT1600, MX100 or Recorder on DAQLOGGER

From DAQLOGGER, you can acquire data from the temperature controller, WT1600, MX100, or recorder via GateCONTROL, GateWT, and GateMX/MW.

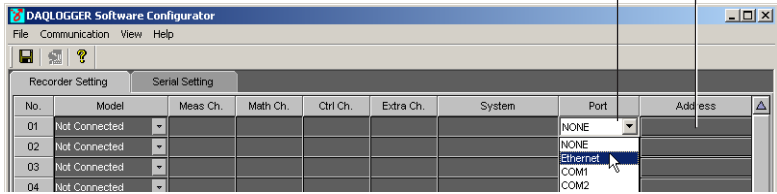
1. Start the Configurator.



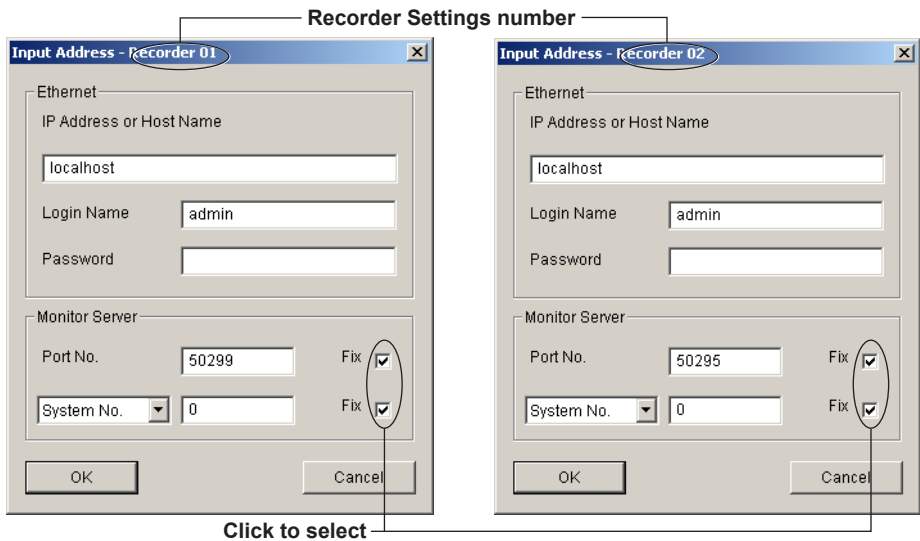
Assigning GateCONTROL

2. Enter the following settings for number 01 on the Recorder Setting tab.
Port : Ethernet
Click the Address box.

Click to display the Input Address dialog box
Click to display a list, then make a selection



3. Enter the following settings in the Input Address dialog box.
Port number: 50299 (the number set on GateCONTROL)
System number: 0

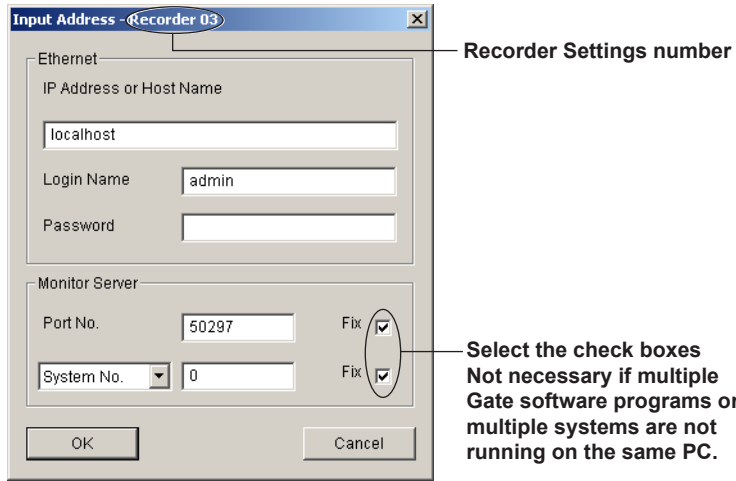


Assigning GateWT

- Repeat steps 2 to 3 to enter the following settings for number 02.
 Port : Ethernet
 Port number : 50295 (the number set on GateWT)
 System number : 0 (GateWT connected to number 01)

Assigning GateMX/MW

- Repeat steps 2 to 3 to enter the following settings for number 03.
 Port : Ethernet
 Port number : 50297 (the number set on GateMX/MW)
 No system number (acquire the data from all the channels of the MX100 connected to GateMX/MW)

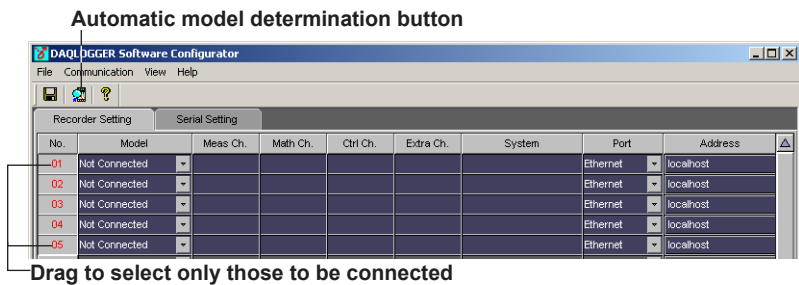


Assigning Recorders

- Assign the recorders to be connected starting from number 03. Match the port and address settings with those on the recorder.

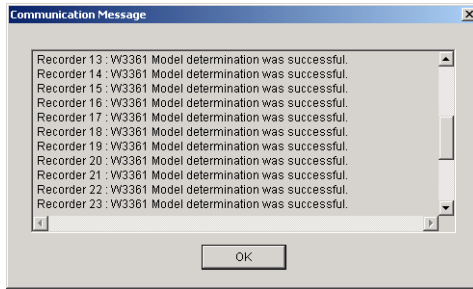
Automatic Model Determination

- On the recorder settings tab, drag to select the number of software applications and recorders to be connected, starting from number 01.

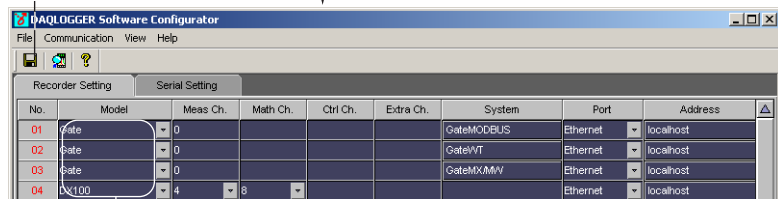


8. Click the Automatic model Determination button.

The Communication Message dialog box is displayed. Confirm that the models were determined successfully.



Save button

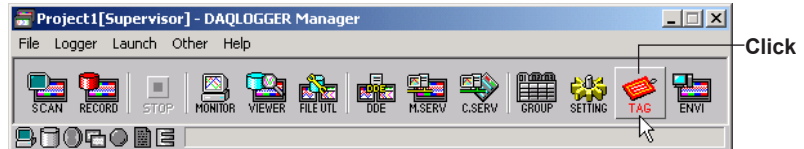


The model name is displayed

9. Click the Save button, then close the configurator.

Entering Tag Settings

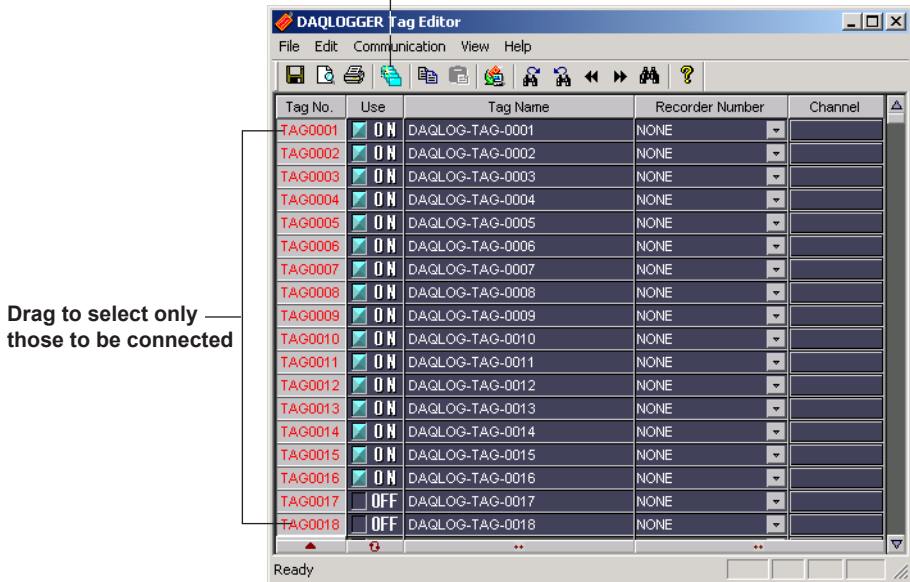
10. Start the tag setting software.



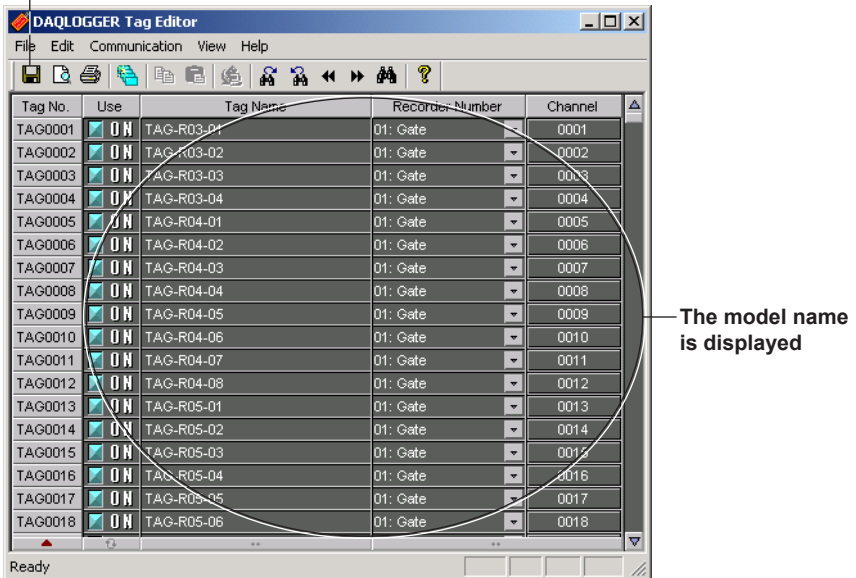
11. Drag to select tag numbers.

12. Click the Auto Assign button.

Automatic model determination button



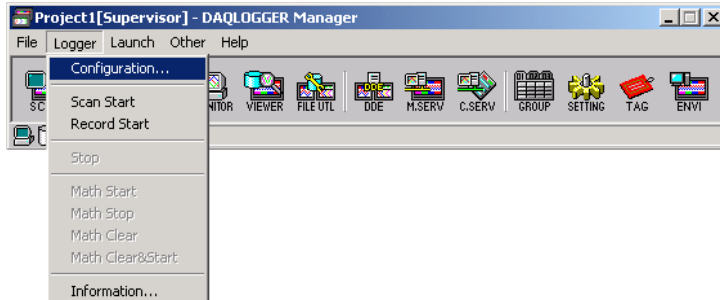
Save button



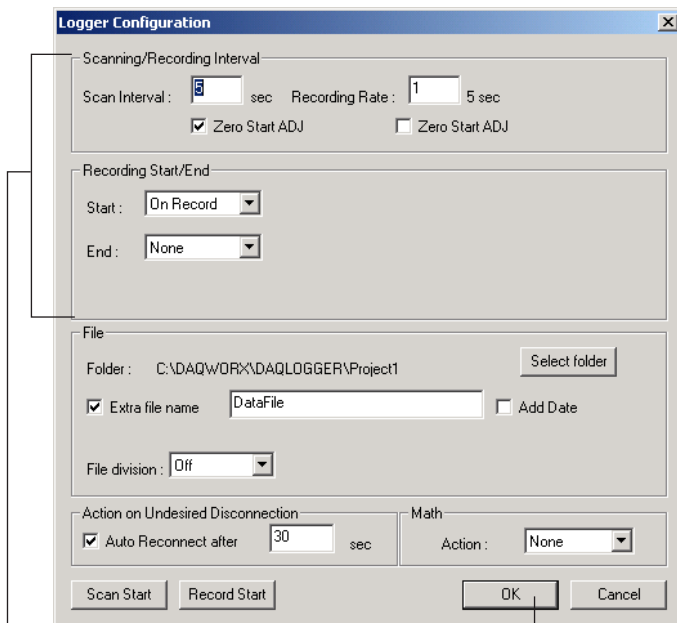
13. Click the Save button, then close the tag setting software.

Setting Logging Conditions

14. Choose **Logger > Configuration** from the menu bar in the manager window.



15. Set data logging conditions from GateCONTROL, GateWT, and GateMX/MW, then click OK.

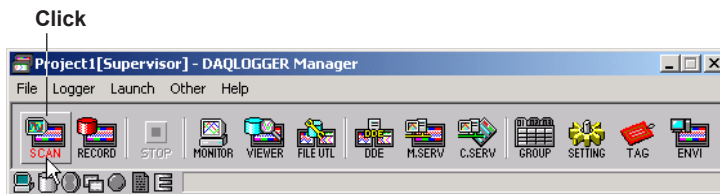


Data logging conditions

Save settings then close the dialog box

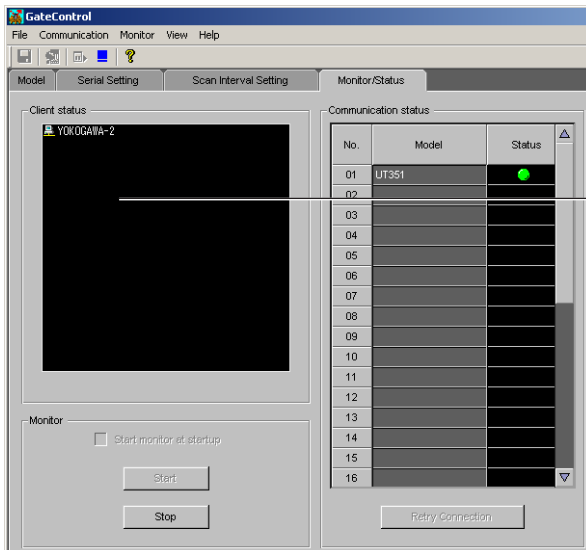
Start Data Logging

16. Click the SCAN button.

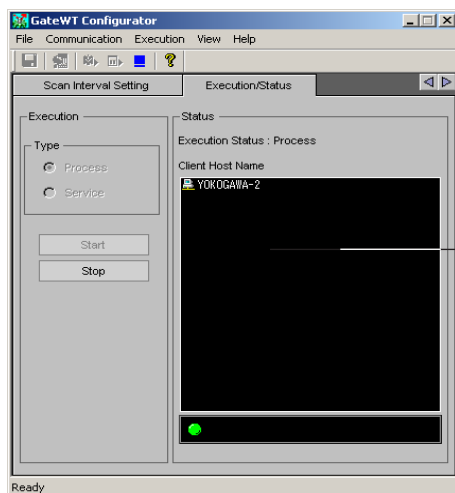


Data is logged from GateCONTROL, GateWT, GateMX/MW, and recorders.

The host name of the PC on which DAQLOGGER is being installed is displayed in GateCONTROL's Monitor/Status tab or GateWT's Execution/Status tab.

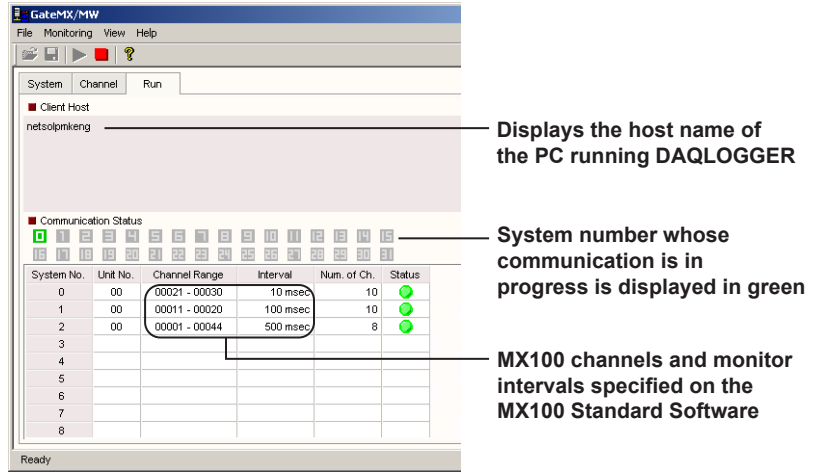


The host name of the PC driven by DAQLOGGER is displayed



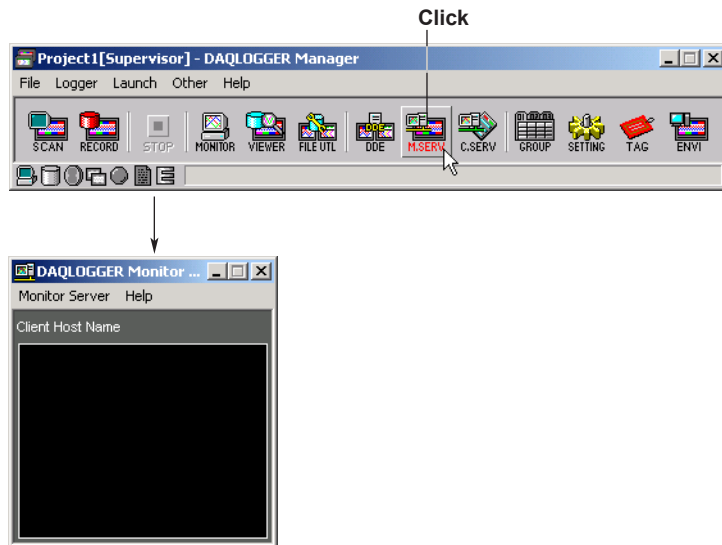
The host name of the PC driven by DAQLOGGER is displayed

The host name of the PC that has DAQLOGGER installed is displayed on the Run tab of GateMX/MW.



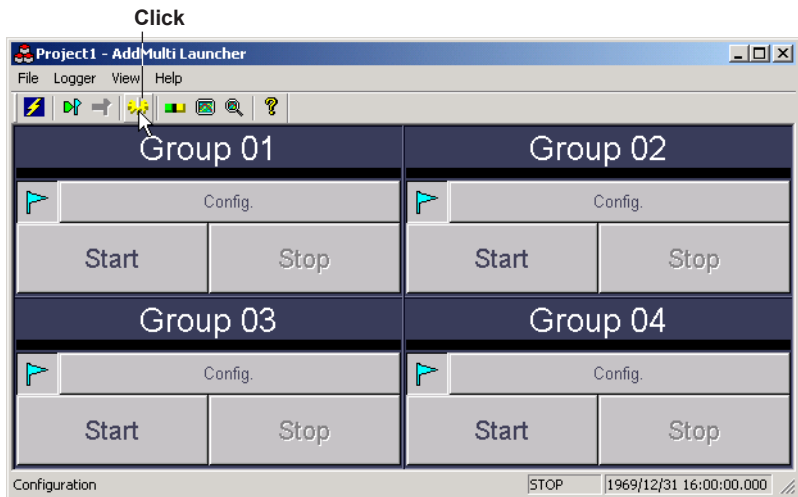
Starting the Monitor Server

17. Click the monitor server icon.

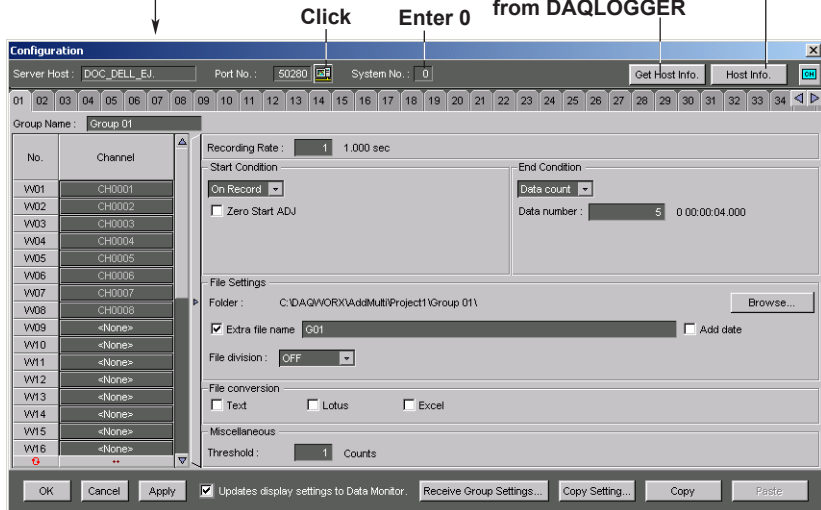


Logging and Saving Data Using AddMulti

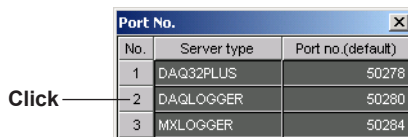
1. Click the Configuration button.



Get Host Info/Recording Config button
When you click the Get Host Info button, information obtained from DAQLOGGER is displayed, and the information changes to the Recording Config button



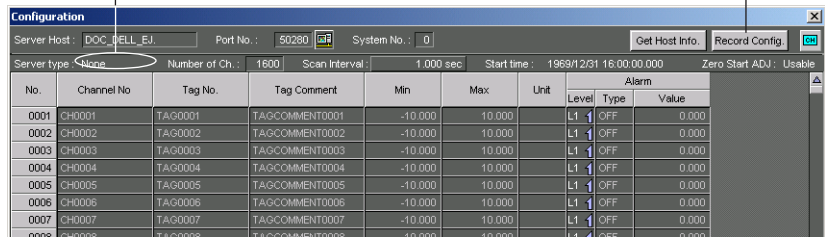
2. Click the port number selection button, then select No. 2 (DAQLOGGER's port number).



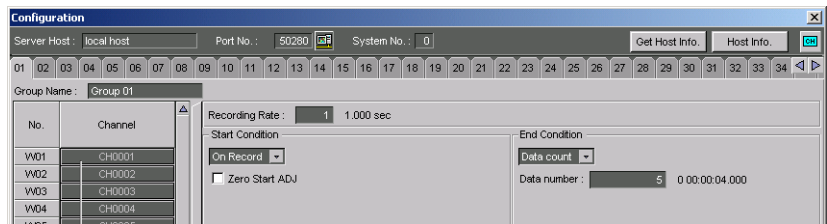
3. Enter a system number of 0.
4. Click Get Host Info.
Information is obtained from DAQLOGGER.
5. Click the Host Info button to check the settings of the connected DAQLOGGERS.

When you click, the acquisition setting screen switches, and the button changes to the Recording Config button

Connected server types are displayed



6. Click the Recording Config button on the 01 tab to set the acquisition conditions.

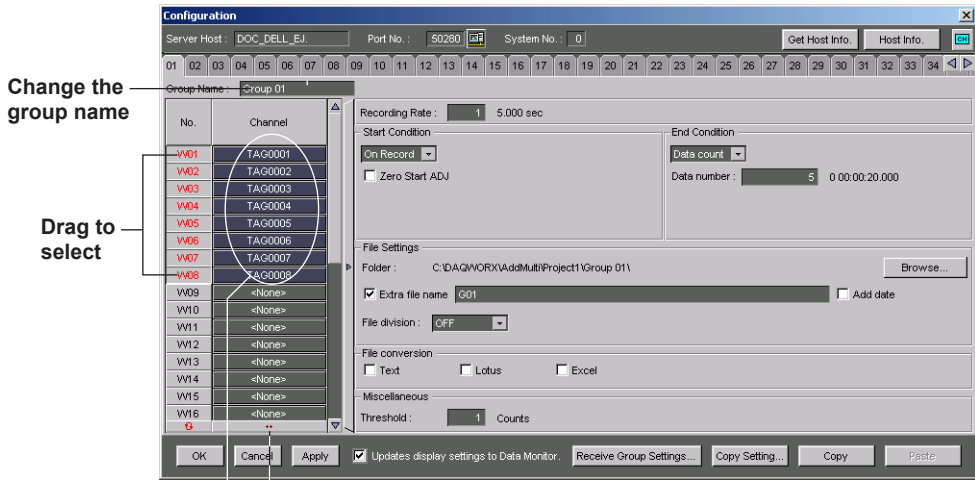


Click
Click to select



Acquisition channel : use the increment button to set W01-W10 to TAG0001-TAG0010.

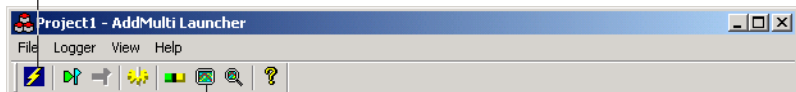
Group name : Evaluation test 1



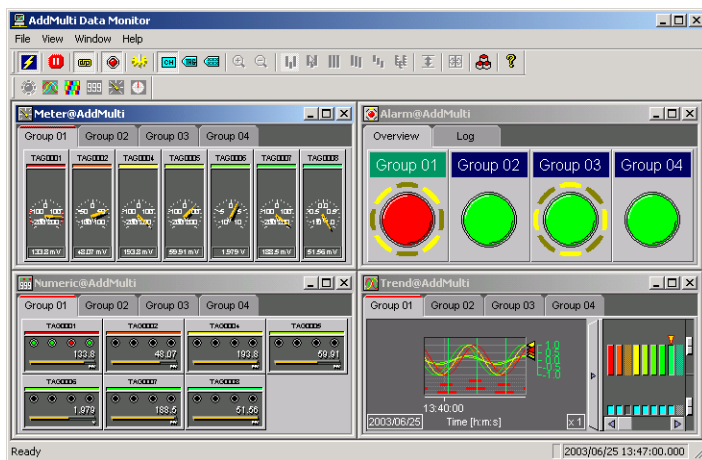
Increment button
 Acquisition channel numbers are filled from the first cell in the selection to the last, each channel being assigned a number +1 higher than the last.

7. Set groups 02, 03, and 04 in the same manner.
 Click OK to save the settings.
8. Click the SCAN button. Data is acquired from DAQLOGGER.
9. Start the monitor software. The specified group data is displayed in the monitor.

Click to start the scan



Click to display the monitor

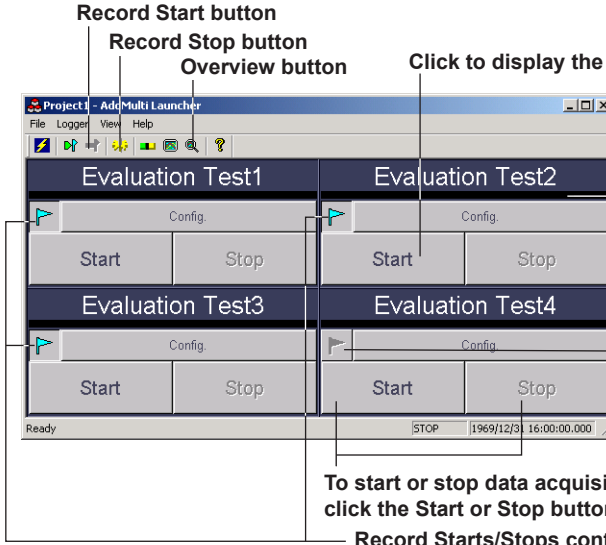


10. Select several groups and start data acquisition on all of them.

Click the desired groups , then click the Record Start button.

To stop, click the Record Stop button.

To start or stop data acquisition on only one group, click the Start or Stop button for that group.



Record Start button
Record Stop button
Overview button
Click to display the Config dialog box

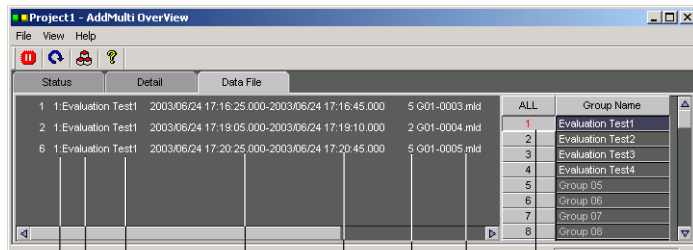
The recording status is displayed using colors
Green: Recording
Yellow: Scanning
Red: Error

Clicking once changes the displayed color to blue, clicking once again changes it to gray

To start or stop data acquisition for individual groups, click the Start or Stop button for the group

Record Starts/Stops controls all groups displayed in blue

Click the Overview button to display the acquisition status by group.



Status	Detail	Data File
1	1: Evaluation Test1	2003/06/24 17:16:25.000-2003/06/24 17:16:45.000
2	1: Evaluation Test1	2003/06/24 17:19:05.000-2003/06/24 17:19:10.000
6	1: Evaluation Test1	2003/06/24 17:20:25.000-2003/06/24 17:20:45.000

File number Group name Time of top data Time of end data Data count File name

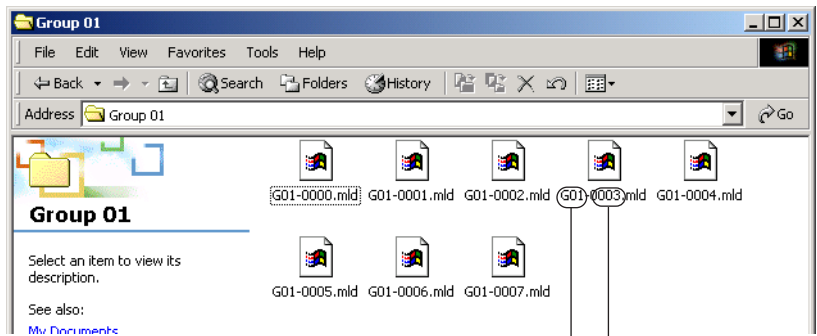
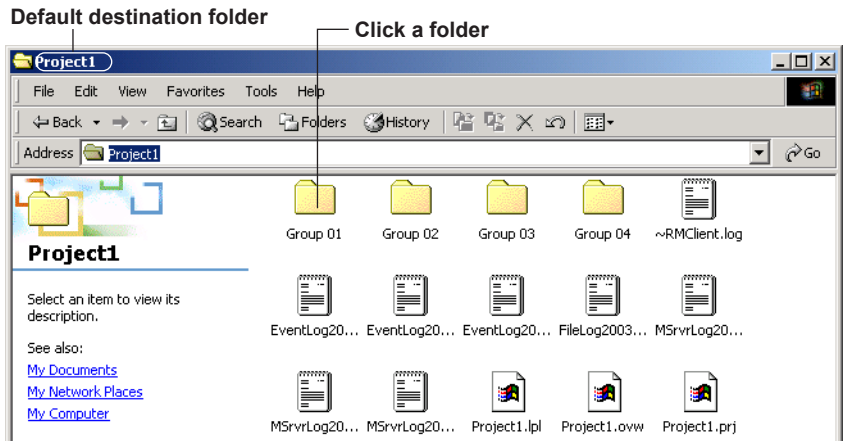
The data file list for the group selected here is displayed

Group	Condition	Interval[sec]	Start Time
01:Evaluation Test1	Recording	5,000	2003/06/24 17:32:58
02:Evaluation Test2	Scanning	5,000	2003/06/24 17:40:42.000[Sche
03:Evaluation Test3	Recording	5,000	2003/06/24 17:32:58
04:Evaluation Test4	Stop	5,000	Waiting for Con
05:Group 05			
06:Group 06			
07:Group 07			
08:Group 08			
09:Group 09			
10:Group 10			

The recording status is displayed using colors
Status displayed in red when an error occurs

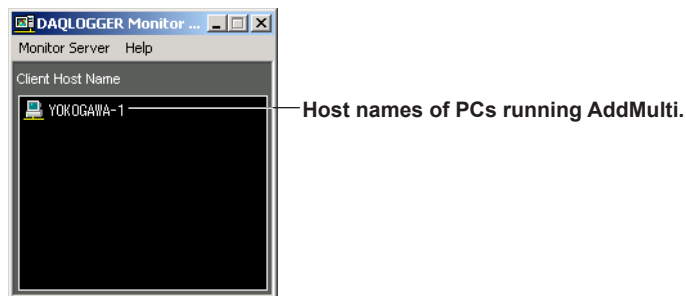
Evaluation Test1 Recording	Evaluation Test2 Scanning
Evaluation Test3 Recording	Evaluation Test4 Stop

Data is stored by group in the specified folder.



When scanning is started on AddMulti, the DQLOGGER monitor server screen displays the host name of the PCs on which AddMulti is installed.

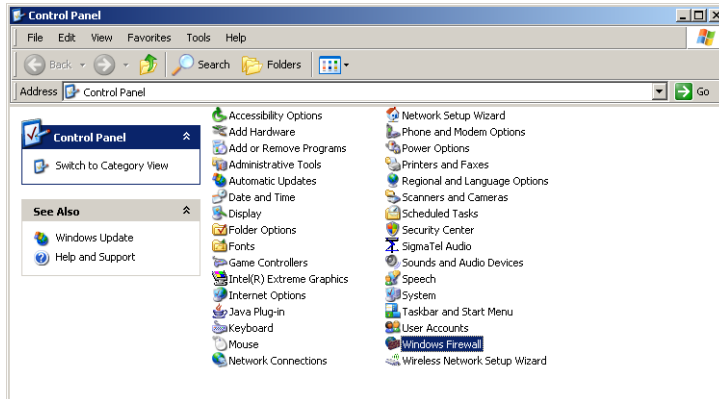
DAQLOGGER monitor server screen



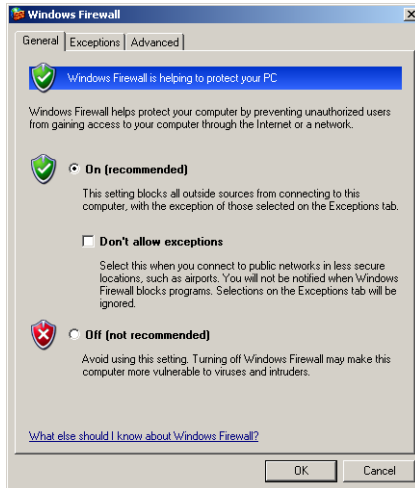
Removing the Firewall

The following is an example of how to add the DAQ32Plus Launcher as a firewall exception.

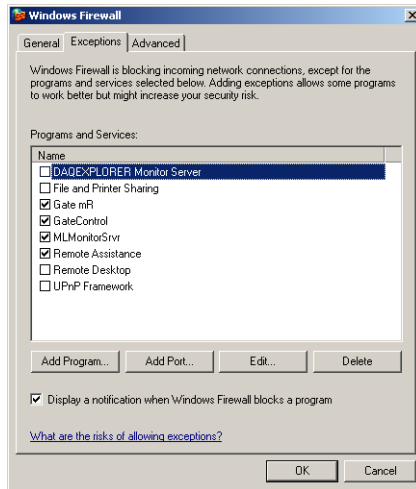
1. From the Start menu, choose Control Panel.
The control panel window appears.
2. Double-click Windows Firewall.



The Windows Firewall dialog box opens.

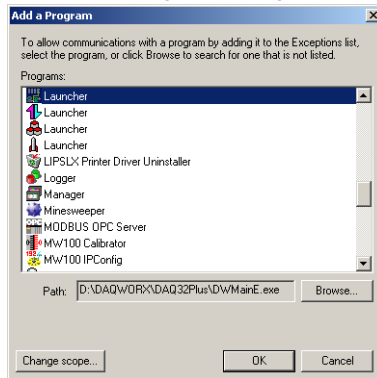


3. If the Off option button is selected, click Cancel to close the dialog box.
If the On option button is selected, clear the Don't allow exceptions check box and click the Exceptions tab.

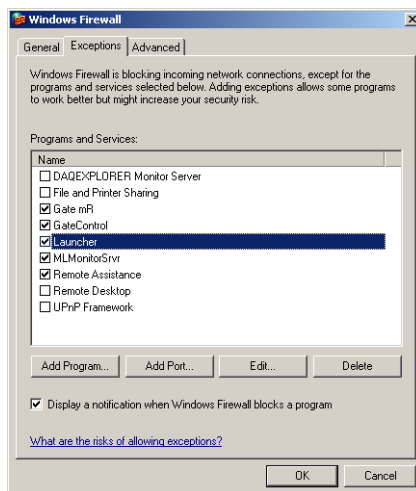


4. Click Add Program.

The Add a Program dialog box opens.



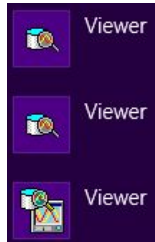
5. Select Launcher for DAQ32Plus and click OK.



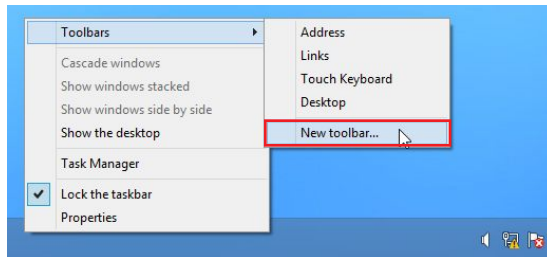
6. Click the Exceptions tab, check that Launcher for DAQ32Plus has been added, select the Launcher for DAQ32Plus check box, and click OK.

If two or more applications have the same name on the list of your “Apps”

If you installed multiple software of DAQWORX on your Windows 8, many applications which have the same icon will appear. In such case, add a new toolbar to the taskbar by the following procedure.

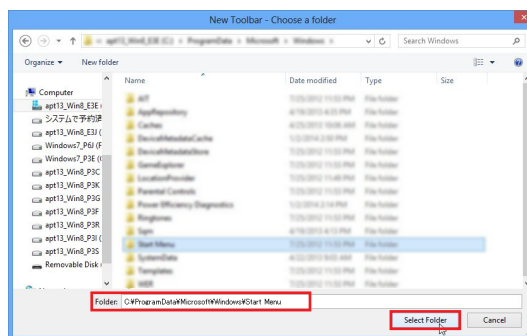


1. Right-click an empty area on the taskbar. Point to **Toolbars**, then click **New toolbar**.



2. On the **New Toolbar-Choose a Folder** dialog box, enter the path “C:\ProgramData\Microsoft\Windows\Start Menu” to the Text box of Folder. Click **Select Folder**.

Start Menu appears on the Taskbar.



If two or more applications have the same name on the list of your “Apps”

3. Applications are indicated by the folder's name followed by double arrows next to the Start Menu.

