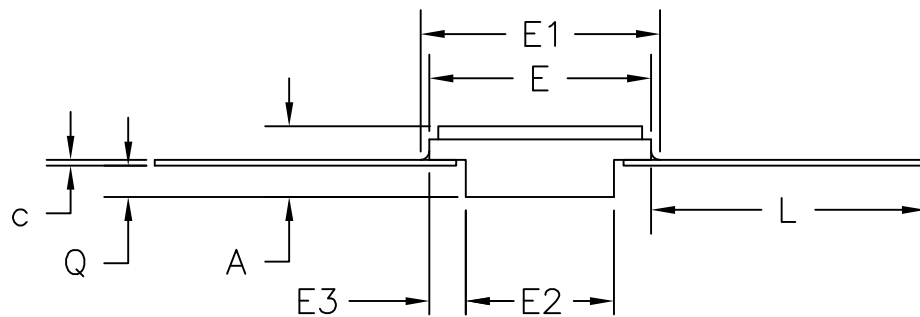


TOP VIEW

DIM	INCHES		MILLIMETERS	
	MIN	MAX	MIN	MAX
A	0.045	0.115	1.14	2.92
b	0.015	0.022	0.38	0.56
c	0.004	0.009	0.10	0.23
D	---	0.290	---	7.37
E	0.240	0.260	6.10	6.60
E1	---	0.280	---	7.11
E2	0.125	---	3.18	---
E3	0.030	---	0.76	---
e	0.050	BSC	1.27	BSC
k	N/A	N/A	N/A	N/A
L	0.250	0.370	6.35	9.40
Q	0.026	0.045	0.66	1.14
s1	0.005	---	0.13	---



SIDE VIEW

NOTES:

1. ALL DIMENSIONS ARE IN INCHES UNLESS OTHERWISE SPECIFIED.
2. MATERIAL MUST COMPLY WITH BANNED AND RESTRICTED SUBSTANCES SPEC #10-0131.
3. ALL DIMENSIONS APPLY BOTH TO LEAD FREE (+) & LEADED (-) PKG.CODES.
4. MEETS 1835 F4A CONFIG. B
5. PACKAGE CODE: F10-3



TITLE:
PACKAGE OUTLINE, 10L FLATPACK

APPROVAL	DOCUMENT CONTROL NO. 21-0010	REV. E	1/1
----------	---------------------------------	-----------	-----

-DRAWING NOT TO SCALE-