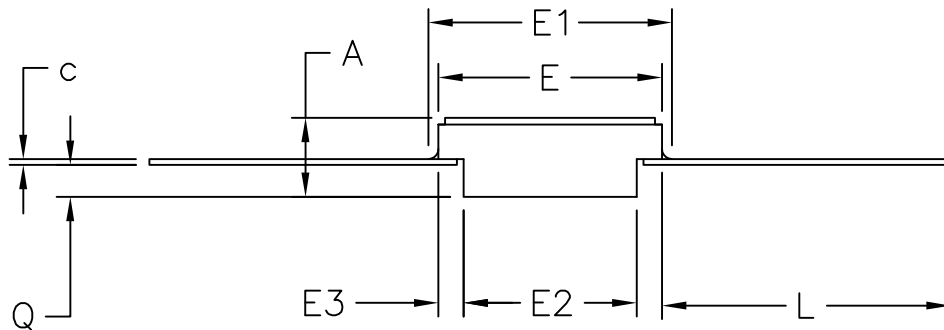


TOP VIEW

| DIM | INCHES |       | MILLIMETERS |      |
|-----|--------|-------|-------------|------|
|     | MIN    | MAX   | MIN         | MAX  |
| A   | 0.045  | 0.115 | 1.14        | 2.92 |
| b   | 0.015  | 0.022 | 0.38        | 0.56 |
| c   | 0.004  | 0.009 | 0.10        | 0.23 |
| D   | ---    | 0.390 | ---         | 9.91 |
| E   | 0.235  | 0.260 | 5.97        | 6.60 |
| E1  | ---    | 0.290 | ---         | 7.37 |
| E2  | 0.125  | ---   | 3.18        | ---  |
| E3  | 0.030  | ---   | 0.76        | ---  |
| e   | 0.050  | BSC   | 1.27        | BSC  |
| k   | ---    | ---   | ---         | ---  |
| L   | 0.270  | 0.370 | 6.86        | 9.40 |
| Q   | 0.026  | 0.045 | 0.66        | 1.14 |
| s1  | 0.005  | ---   | 0.13        | ---  |



SIDE VIEW

NOTES:

1. ALL DIMENSIONS ARE IN INCHES UNLESS OTHERWISE SPECIFIED.
2. MATERIAL MUST COMPLY WITH BANNED AND RESTRICTED SUBSTANCES SPEC #10-0131.
3. ALL DIMENSIONS APPLY BOTH TO LEAD FREE (+) & LEADED (-) PKG.CODES.
4. MEETS MIL STD 1835 F-2A CONFIGURATION B
5. PACKAGE CODE: F14-2



TITLE:  
PACKAGE OUTLINE, 14L FLATPACK

|          |                                 |           |     |
|----------|---------------------------------|-----------|-----|
| APPROVAL | DOCUMENT CONTROL NO.<br>21-0011 | REV.<br>B | 1/1 |
|----------|---------------------------------|-----------|-----|

-DRAWING NOT TO SCALE-