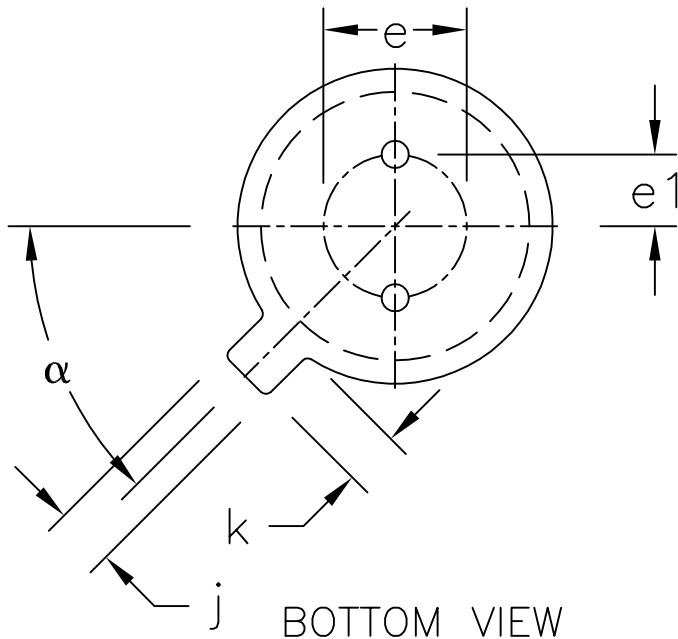


SIDE VIEW



BOTTOM VIEW

SYMBOL	INCHES		MILLIMETERS	
	MIN	MAX	MIN	MAX
A	.115	.150	2.92	3.81
$f_b$	---	.021	---	.533
$f_{b2}$	.016	.019	.406	.483
$f_D$	.209	.230	5.31	5.84
$f_{D1}$	.178	.195	4.52	4.95
e	.100 T.P.		2.54 T.P.	
$e1$	.050 T.P.		1.27 T.P.	
F	---	.030	---	.762
j	.036	.046	.914	1.17
k	.028	.048	.711	1.22
L	.500	---	12.70	---
L1	---	.050	---	1.27
L2	.250	---	6.35	---
$\alpha$	45° T.P.		45° T.P.	

NOTES:

1. ALL DIMENSIONS ARE IN INCHES UNLESS OTHERWISE SPECIFIED.
2. MATERIAL MUST COMPLY WITH BANNED AND RESTRICTED SUBSTANCES SPEC #10-0131.
3. ALL DIMENSIONS APPLY BOTH TO LEAD FREE (+) & LEADED (-) PKG. CODES.
4. DIMENSIONS ARE COMPLIANT TO JEDEC, TO-52
5. PACKAGE CODE: G52-2  
T52-2



TITLE:

PACKAGE OUTLINE, 2L TO-52

APPROVAL

DOCUMENT CONTROL NO.

REV.

21-0020

B

1/1

-DRAWING NOT TO SCALE-