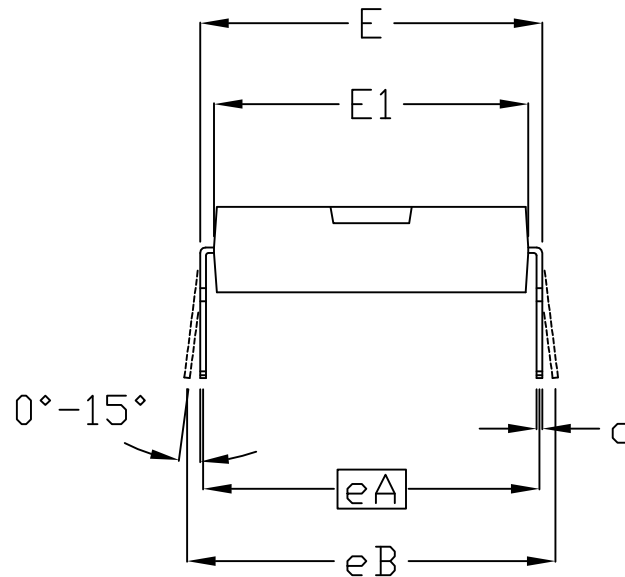
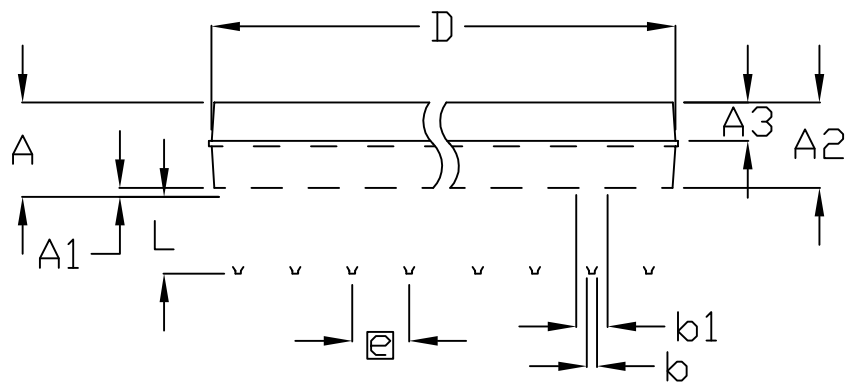


TOP VIEW



END VIEW

DIM	INCHES		MILLIMETERS	
	MIN	MAX	MIN	MAX
A	-	0.200	-	5.08
A1	0.015	-	0.39	-
A2	0.125	0.175	3.18	4.45
A3	0.055	0.080	1.40	2.03
b	0.016	0.020	0.41	0.51
b1	0.045	0.065	1.14	1.65
c	0.008	0.012	0.21	0.30
D1	0.025	0.055	0.63	1.40
E	0.600	0.625	15.24	15.87
E1	0.525	0.575	13.34	14.61
e	0.100 BSC		2.54 BSC	
eA	0.600 BSC		15.24 BSC	
eB	-	0.700	-	17.78
L	0.120	0.150	3.05	3.81



SIDE VIEW

VARIATIONS:

DIM	INCHES		MILLIMETERS		N	MS011	PKG CODE
	MIN	MAX	MIN	MAX			
D	1.230	1.270	31.24	32.26	24	AA	P24-3, P24-4, P24-6, P24-7, P24M-1, P24M-2
D	1.430	1.470	36.32	37.34	28	AB	P28-1, P28-2, P28-3, P28-5, P28-7, P28M-1, P28M-8
D	2.025	2.075	51.44	52.71	40	AC	P40-1, P40-2, P40-4, P40M-1, P40M-2, P40R-1

NOTES:

1. DIMENSIONS ARE IN MILLIMETERS UNLESS OTHERWISE SPECIFIED.
2. D&E DO NOT INCLUDE MOLD FLASH.
3. MOLD FLASH OR PROTRUSIONS NOT TO EXCEED 0.15mm (.006").
4. MEETS JEDEC MS011.
5. N = NUMBER OF PINS
6. MATERIAL MUST COMPLY WITH BANNED AND RESTRICTED SUBSTANCES SPEC # 10-0131.
7. ALL DIMENSIONS APPLY TO BOTH LEADED (-) AND PbfREE (+) PKG. CODES.

-DRAWING NOT TO SCALE-



TITLE:
PACKAGE OUTLINE,
PDIP .600"

APPROVAL	DOCUMENT CONTROL NO. 21-0044	REV. D	1/1
----------	---------------------------------	-----------	-----