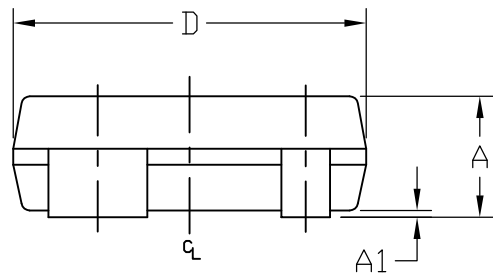
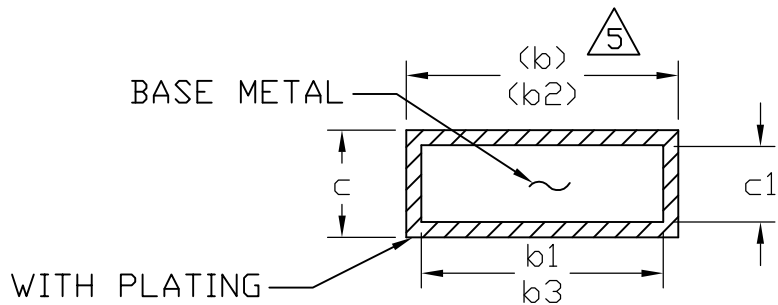


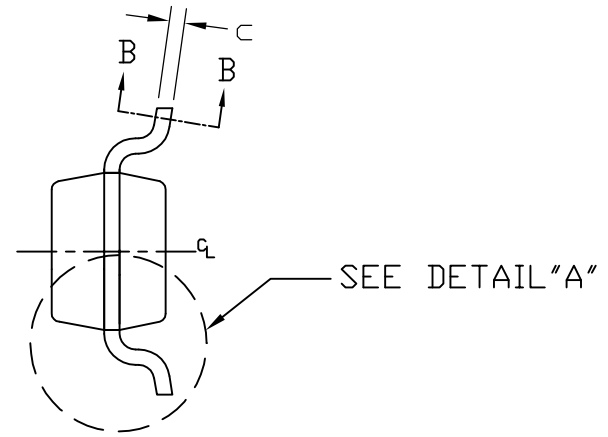
TOP VIEW



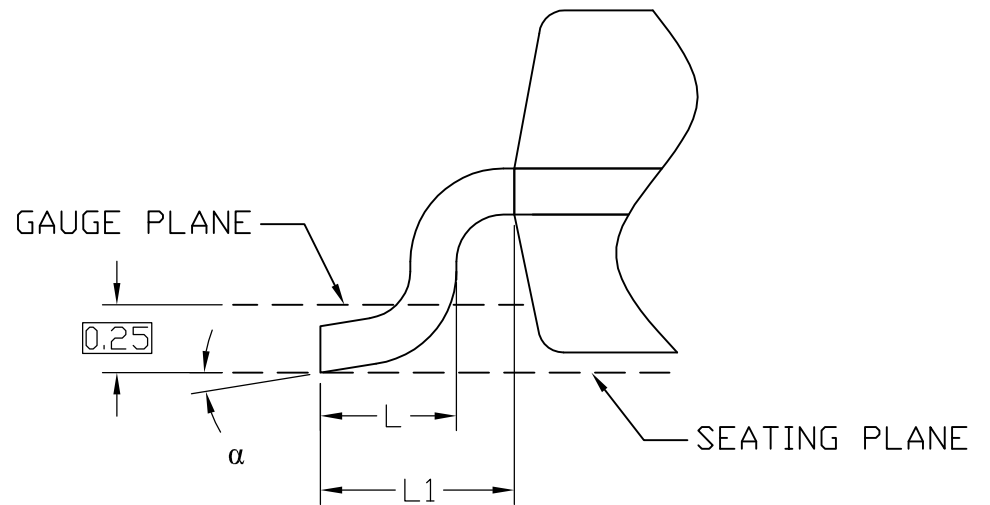
SIDE VIEW



SECTION "B-B"



END VIEW



DETAIL "A"



TITLE:  
PACKAGE OUTLINE,  
4L SOT23

APPROVAL	DOCUMENT CONTROL NO. 21-0052	REV. G	1/2
----------	---------------------------------	-----------	-----

-DRAWING NOT TO SCALE-

NOTES:

1. ALL DIMENSIONS ARE IN MILLIMETERS UNLESS OTHERWISE SPECIFIED.
2. D AND E DO NOT INCLUDE MOLD FLASH.
3. MOLD FLASH OR PROTRUSION SHALL NOT EXCEED 0.15mm (.006").
4. MEETS JEDEC T0253.
5. THESE DIMENSIONS APPLY TO THE FLAT SECTION OF THE LEAD BETWEEN 0.08mm AND 0.15mm FROM THE LEAD TIP.
6. MATERIAL MUST COMPLY WITH BANNED AND RESTRICTED SUBSTANCES SPEC # 10-0131.
7. ALL DIMENSIONS APPLY TO BOTH LEADED (-) AND LEAD FREE (+) PACKAGE CODES.
8. PKG CODES: U4-1, U4-2

DIM	INCHES			MILLIMETERS		
	MIN	NOM	MAX	MIN	NOM	MAX
A	0.031	0.0394	0.048	0.80	1.000	1.22
A1	0.000	0.0022	0.006	0.01	0.056	0.15
b	0.014	0.0157	0.020	0.35	0.400	0.50
b1	0.012	-	0.018	0.30	-	0.45
b2	0.030	0.0323	0.035	0.76	0.820	0.89
b3	0.012	-	0.033	0.76	-	0.84
c	0.003	0.0051	0.008	0.08	0.130	0.20
c1	0.003	-	0.006	0.08	-	0.16
D	0.110	0.1150	0.120	2.80	2.920	3.04
E	0.083	0.0933	0.104	2.10	2.370	2.64
E1	0.047	0.0512	0.055	1.20	1.300	1.40
e	0.076 BSC.			1.92 BSC.		
e1	0.008 BSC.			0.20 BSC.		
L	0.016	-	0.024	0.40	-	0.60
L1	0.021 REF.			0.54 REF.		
S	0.018	0.0207	0.024	0.45	0.525	0.60
α	0°	2°	8°	0°	2°	8°



TITLE:  
PACKAGE OUTLINE,  
4L SOT23

APPROVAL	DOCUMENT CONTROL NO. 21-0052	REV. G	2/2
----------	---------------------------------	-----------	-----

-DRAWING NOT TO SCALE-