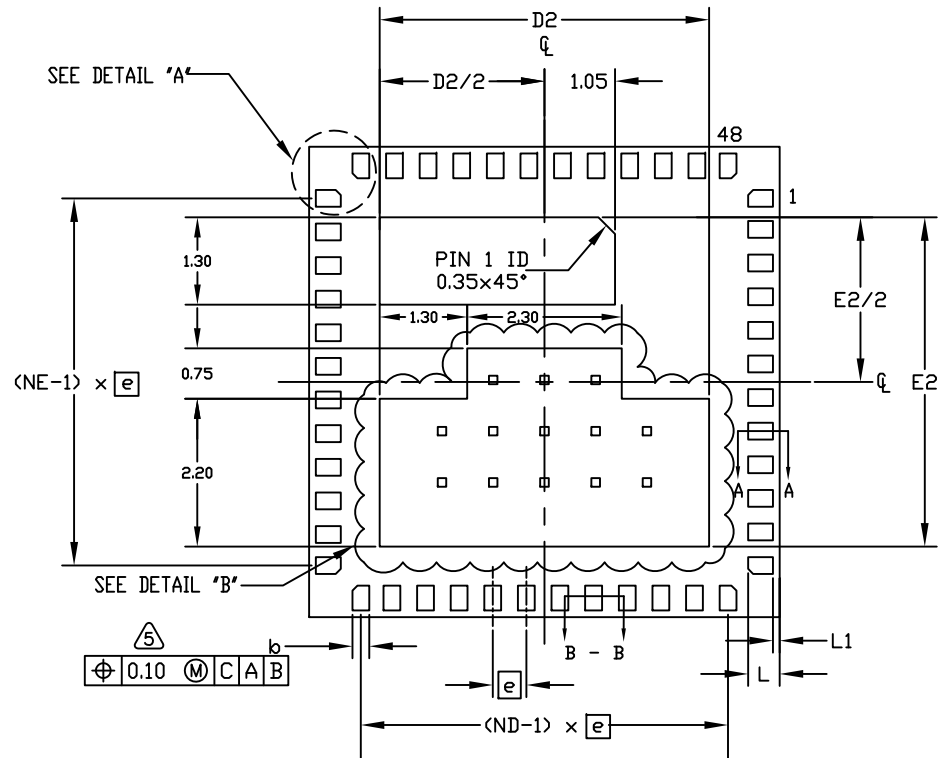
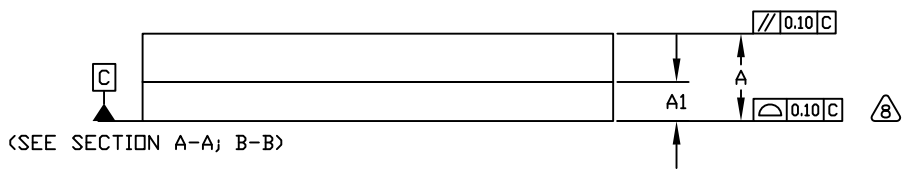


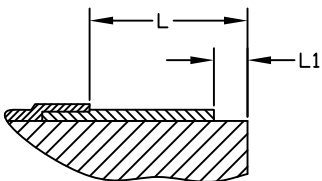
TOP VIEW



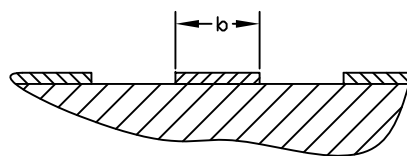
BOTTOM VIEW



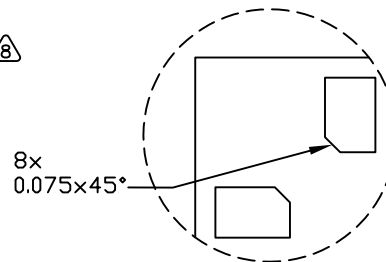
SIDE VIEW



SECTION A-A
SCALE: NONE



SECTION B-B
SCALE: NONE



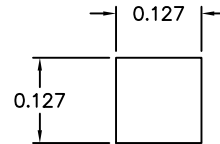
DETAIL A
SCALE: NONE

MAXIM			
TITLE: PACKAGE OUTLINES, 48L LGA 7x7x1.4mm			
APPROVAL	DOCUMENT CONTROL NO.	REV.	1/2
	21-0157	C	

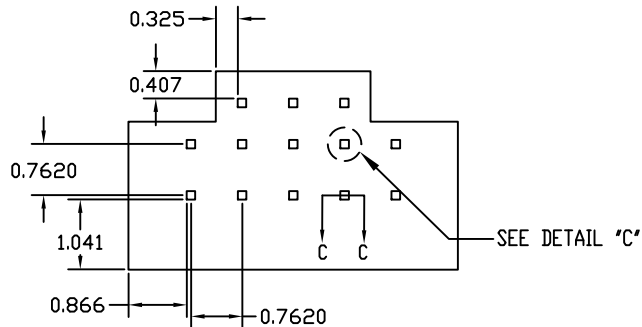
NOTES:

1. ALL DIMENSIONS ARE IN MILLIMETERS. ANGLES ARE IN DEGREES.
2. DIMENSIONING & TOLERANCING CONFORM TO ASME Y14.5M-1994.
3. "N" IS THE TOTAL NUMBER OF TERMINALS.
4. THE TERMINAL #1 IDENTIFIER AND TERMINAL NUMBERING CONVENTION SHALL CONFORM TO JESD 95-1 SPP-012. DETAILS OF TERMINAL #1 IDENTIFIER ARE OPTIONAL, BUT MUST BE LOCATED WITHIN THE ZONE INDICATED. THE TERMINAL #1 IDENTIFIER MAY BE EITHER A MOLD OR MARKED FEATURE.
5. DIMENSION b APPLIES TO METALLIZED TERMINAL AND IS MEASURED BETWEEN 0.25 mm AND 0.30 mm FROM TERMINAL TIP.
6. ND AND NE REFER TO THE NUMBER OF TERMINALS ON EACH "D" AND "E" SIDE RESPECTIVELY.
7. DEPOPULATION IS POSSIBLE IN A SYMMETRICAL FASHION.
8. COPLANARITY APPLIES TO THE EXPOSED HEAT SINK SLUG AS WELL AS THE TERMINALS.
9. WARPAGE SHALL NOT EXCEED 0.10 mm.
10. MATERIAL MUST COMPLY WITH BANNED AND RESTRICTED SUBSTANCES SPEC # 10-0131.
11. ALL DIMENSIONS APPLY BOTH TO LEAD FREE (+) & LEADED (-) PKG. CODES.
12. PACKAGE CODE: L4877A-1; L4877A-3

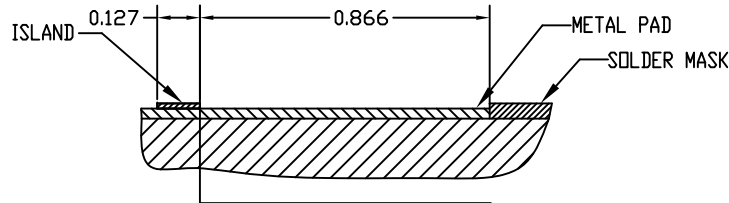
SYMBOLS	COMMON DIMENSIONS		
	MIN.	NOM.	MAX.
A	1.20	1.30	1.40
A1	-	0.58	-
D	6.90	7.00	7.10
D2	4.70	4.90	5.10
E	6.90	7.00	7.10
E2	4.70	4.90	5.10
L	0.42	0.47	0.52
L1	-	-	0.10
b	0.20	0.25	0.30
e	-	0.50	-
N	48		
ND	12		
NE	12		



DETAIL C
SCALE: NONE



DETAIL B



SECTION C-C
SCALE: NONE

MAXIM			
TITLE: PACKAGE OUTLINES, 48L LGA 7x7x1.4mm			
APPROVAL	DOCUMENT CONTROL NO. 21-0157	REV. C	2/2