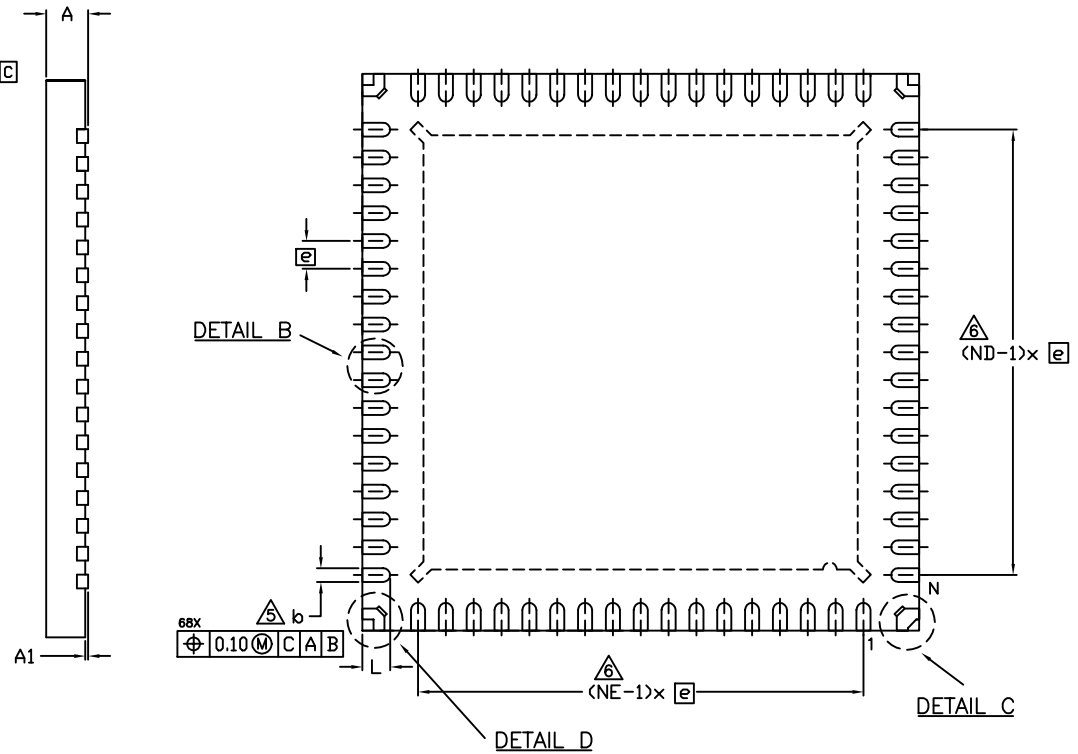
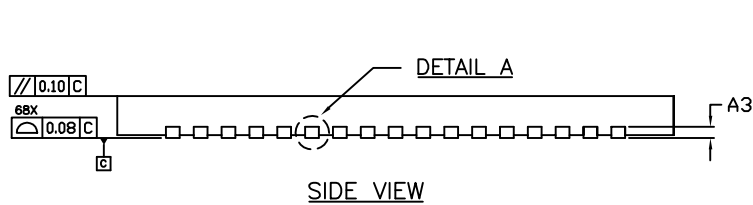


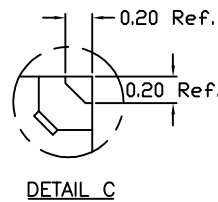
TOP VIEW



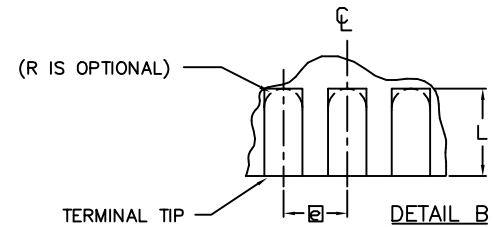
BOTTOM VIEW



SIDE VIEW

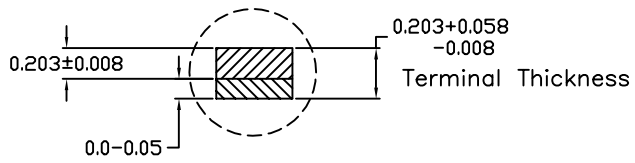


DETAIL C

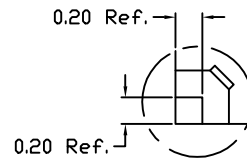


TERMINAL TIP

DETAIL B



DETAIL A



DETAIL D

-DRAWING NOT TO SCALE-

MAXIM

TITLE:
PKG. OUTLINE, 68L TQFN, 10x10x0.8mm,
INVERTED DIE PAD, NiPd OPTION

APPROVAL	DOCUMENT CONTROL NO. 21-0192	REV. C	1/2
----------	---------------------------------	-----------	-----

PKG	68L 10x10			NOTE
	REF.	MIN.	NOM.	
A	0.70	0.75	0.80	
A1	0	-	0.05	
A3	0.20 REF.			
b	0.20	0.25	0.30	
D	9.90	10.00	10.10	
E	9.90	10.00	10.10	
e	0.50 BSC.			
L	0.40	0.50	0.60	
N	68			
ND	17			
NE	17			

EXPOSED PAD VARIATION						
PKG CODE	D2			E2		
	MIN.	NOM.	MAX.	MIN.	NOM.	MAX.
T6800RN-6	7.70	7.80	7.90	7.70	7.80	7.90

NOTES:

1. DIMENSIONING & TOLERANCING CONFORM TO ASME Y14.5M-1994.
2. ALL DIMENSIONS ARE IN MILLIMETERS. ANGLES ARE IN DEGREES.
3. N IS THE TOTAL NUMBER OF TERMINALS.
4. THE TERMINAL #1 IDENTIFIER AND TERMINAL NUMBERING CONVENTION SHALL CONFORM TO JESD 95-1 SPP-012. DETAILS OF TERMINAL #1 IDENTIFIER ARE OPTIONAL, BUT MUST BE LOCATED WITHIN THE ZONE INDICATED. THE TERMINAL #1 IDENTIFIER MAY BE EITHER A MOLD OR MARKED FEATURE.
5. DIMENSION b APPLIES TO METALLIZED TERMINAL AND IS MEASURED BETWEEN 0.25mm AND 0.30mm FROM TERMINAL TIP.
6. ND AND NE REFER TO THE NUMBER OF TERMINALS ON EACH D AND E SIDE RESPECTIVELY.
7. WARPAGE SHALL NOT EXCEED 0.10mm.
8. DRAWING CONFORMS TO JEDEC MO-220.
9. MARKING IS FOR PACKAGE ORIENTATION REFERENCE ONLY.
10. ALL DIMENSIONS APPLY TO BOTH LEADED (-) AND PbfREE (+) PARTS.

-DRAWING NOT TO SCALE-

			
TITLE: PKG. OUTLINE, 68L TQFN, 10x10x0.8mm, INVERTED DIE PAD, NiPd OPTION			
APPROVAL	DOCUMENT CONTROL NO.	REV.	2/2
	21-0192	C	