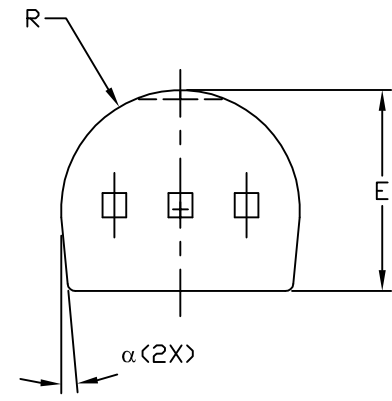
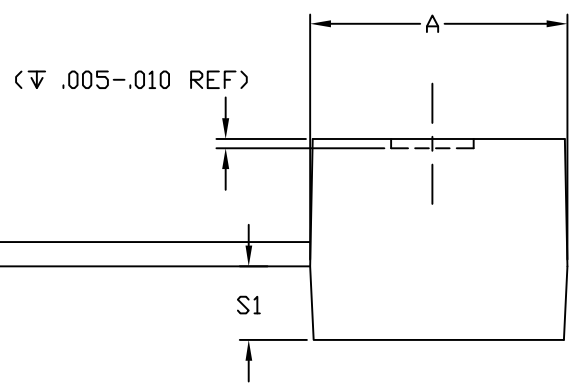



SYMBOL	INCHES		MILLIMETERS	
	MIN	MAX	MIN	MAX
A	.170	.195	4.32	4.95
b	.014	.020	0.36	0.51
E	.130	.155	3.30	3.94
e	.096	.116	2.44	2.94
g	.055	.065	1.40	1.65
L	.495	.610	12.57	15.36
R	.085	.095	2.16	2.41
S1	.045	.060	1.14	1.52
W	.016	.022	0.41	0.56
D	.175	.195	4.45	4.95
H	.015	.030	0.38	0.76
J	.020	.175	0.51	4.45
α	4°	6°	4°	6°
PKG CODE	Q3-4			



NOTES:

1. ALL DIMENSIONS ARE IN INCHES UNLESS OTHERWISE SPECIFIED.
2. MATERIAL MUST COMPLY WITH BANNED AND RESTRICTED SUBSTANCES SPEC # 10-0131.
3. PACKAGE OUTLINE EXCLUSIVE OF ANY MOLD FLASHES DIMENSION.
4. PACKAGE OUTLINE EXCLUSIVE OF BURR DIMENSION.
5. MEETS JEDEC T0-226 AA.
6. ALL DIMENSIONS APPLY TO BOTH LEADED (-) AND PbfFREE (+) PKG. CODES.

-DRAWING NOT TO SCALE-


maxim integrated™

TITLE:
PACKAGE OUTLINE,
3-PIN FORMED LEADS T0-92

APPROVAL	DOCUMENT CONTROL NO. 21-0250	REV. C	1/1
----------	---------------------------------	-----------	-----