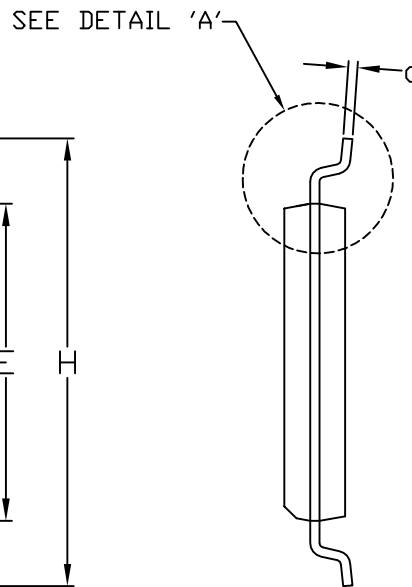
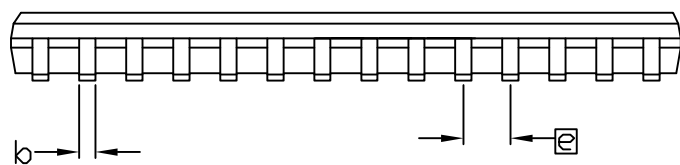


TOP VIEW

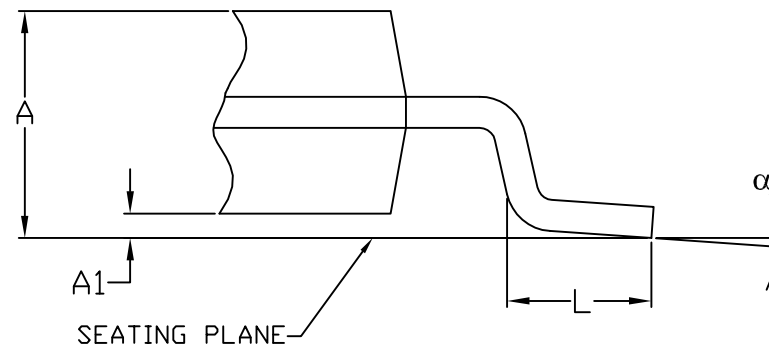


END VIEW

SYM	INCHES		MILLIMETERS	
	MIN	MAX	MIN	MAX
A	.100	.120	2.55	3.05
A1	.002	.014	0.05	0.35
c	.006	.013	0.14	0.32
$\alpha$	0°	8°	0°	8°
L	.016	.050	0.40	1.27
e	.050 BSC		1.27 BSC	
b	.014	.020	0.35	0.50
N	28			
D	.697	.728	17.70	18.50
E	.324	.350	8.23	8.90
H	.453	.500	11.50	12.70
PKG CODE	F28-1, F28-2			



SIDE VIEW



DETAIL A

NOTES:

1. ALL DIMENSIONS ARE IN MILLIMETERS UNLESS OTHERWISE SPECIFIED.
2. MATERIAL MUST COMPLY WITH BANNED AND RESTRICTED SUBSTANCES SPEC # 10-0131.
3. DIMENSIONS "D" AND "E" ARE MEASURED AT MOLD PARTING LINE AND DO NOT INCLUDE MOLD FLASH.
4. ALL DIMENSIONS APPLY TO BOTH LEADED (-) AND PbFREE (+) PKG. CODES.

-DRAWING NOT TO SCALE-



TITLE:  
PACKAGE OUTLINE,  
28L SOIC .330 INCH

APPROVAL	DOCUMENT CONTROL NO. 21-0251	REV. C	1/1
----------	---------------------------------	-----------	-----